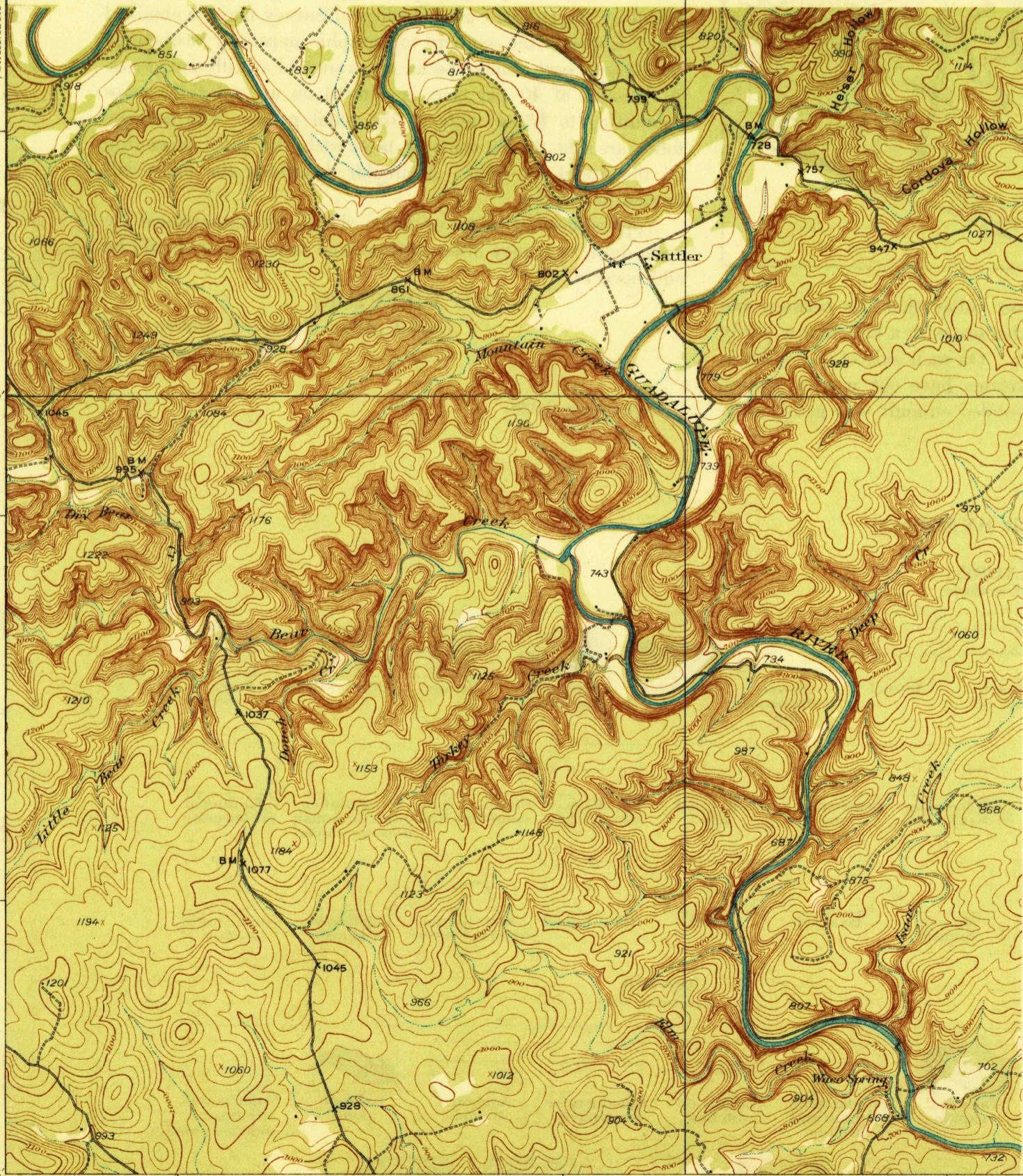


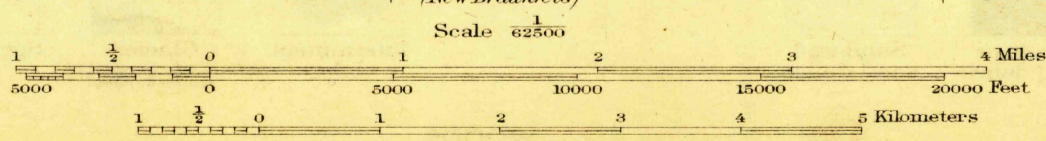
U. S. G. S.
FILE COPY
Inspection and Editing.

PRELIMINARY EDITION
UNSURVEYED AREA



Topography by B. A. Jenkins
Culture and drainage in part compiled from
aerial photographs taken by Air Corps, U.S. Army
Control by U.S. Geological Survey and U.S. Coast
and Geodetic Survey
Surveyed in 1925

APPROXIMATE MEAN
MAGNETIC NORTH
DECLINATION, 1925



Contour interval 20 feet
Datum is mean sea level

U. S. G. S.
FILE COPY
Inspection and Editing.

Polyconic projection, North American datum
5000 yard grid based upon U.S. zone system, D

USGS
Historical File
Topographic Division

JAN 14 1930 (1970)

HUNTER, TEX.

Edition of 1929

2509:3724/39