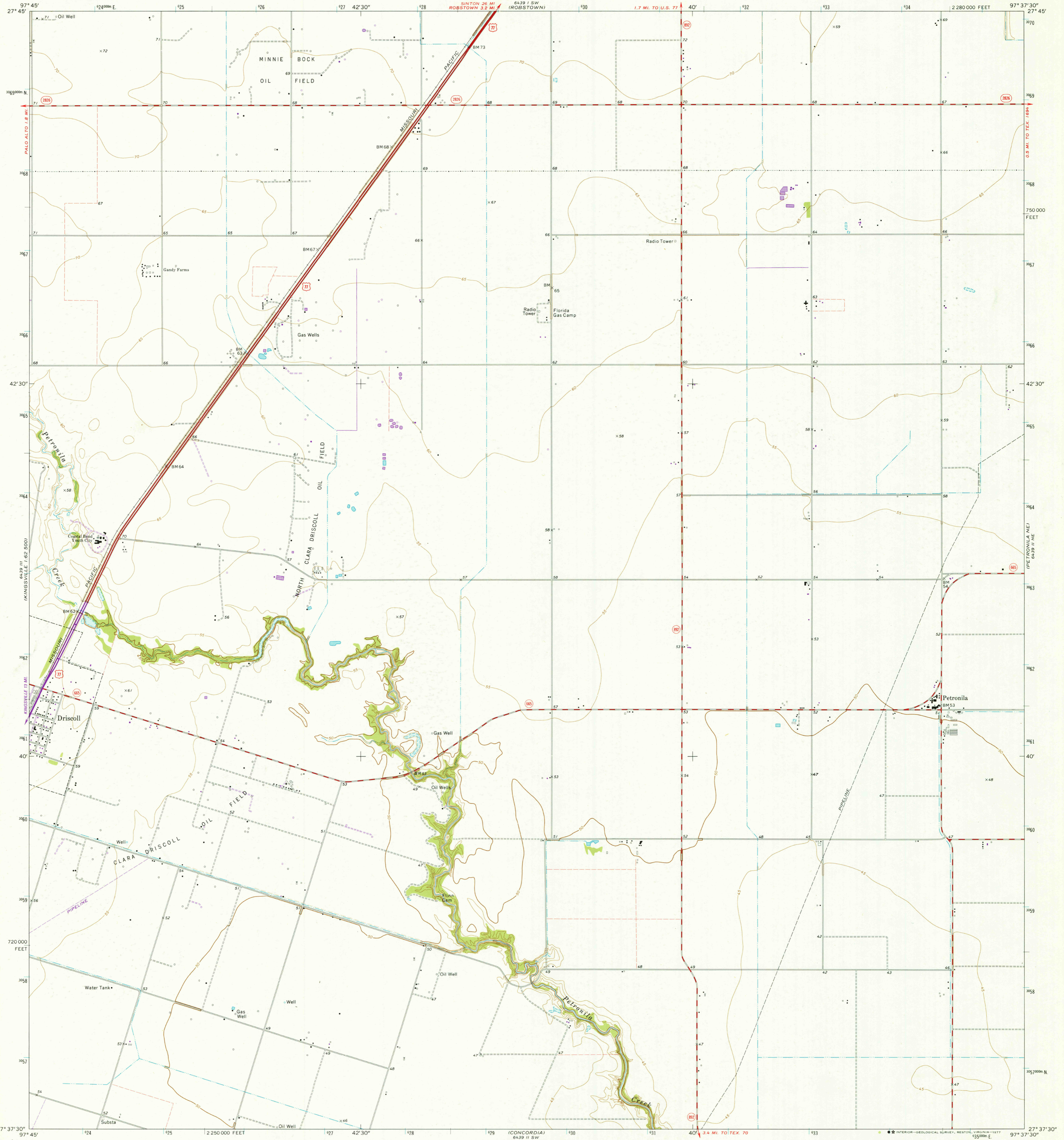


6439 II SW
1:24,000
1:50,000

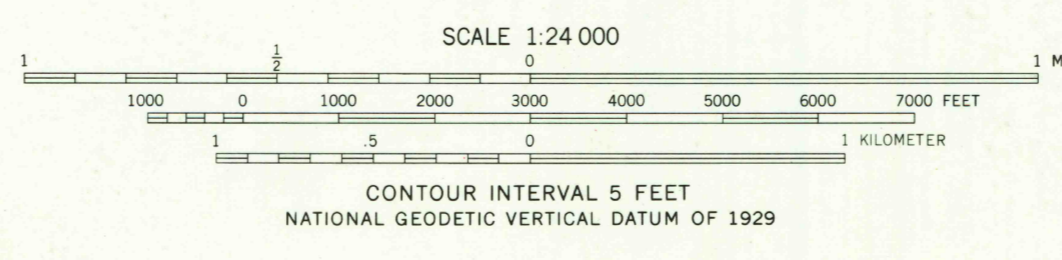
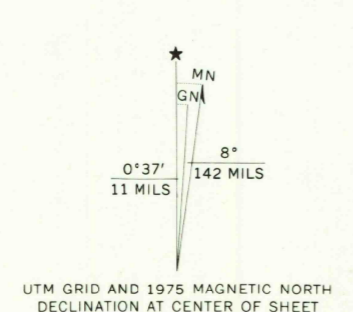
UNITED STATES
DEPARTMENT OF THE INTERIOR
GEOLOGICAL SURVEY

DRISCOLL EAST QUADRANGLE
TEXAS—NUECES CO.
7.5 MINUTE SERIES (TOPOGRAPHIC)
NW 4 PETRONILA 15' QUADRANGLE

6439 SE
1:50,000
(ANNAVILLE)



Mapped, edited, and published by the Geological Survey
Control by USGS and NOS/NOAA
Topography by photogrammetric methods from aerial
photographs taken 1968. Field checked 1969.
Polyconic projection. 1927 North American datum
10,000-foot grid based on Texas coordinate system,
south zone
1000-meter Universal Transverse Mercator grid ticks,
zone 14, shown in blue
Fine red dashed lines indicate selected fence lines
Revisions shown in purple compiled from aerial photographs
taken 1975. This information not field checked



ROAD CLASSIFICATION

Primary highway, all weather, hard surface	Light duty road, all weather, improved surface
Secondary highway, all weather, hard surface	Unimproved road, fair or dry weather
U. S. Route	State Route



THIS MAP COMPLIES WITH NATIONAL MAP ACCURACY STANDARDS
FOR SALE BY U. S. GEOLOGICAL SURVEY, DENVER, COLORADO 80225, OR RESTON, VIRGINIA 22092
A FOLDER DESCRIBING TOPOGRAPHIC MAPS AND SYMBOLS IS AVAILABLE ON REQUEST

USGS
Historical File
Topographic Division

DRISCOLL EAST, TEX.
NW 4 PETRONILA 15' QUADRANGLE
N2737.5-W9737.5/7.5
1969
PHOTOREVISED 1975
AMS 6439 II NW—SERIES V882

LAUREL RANCH
6439 SE
1:50,000
(ANNAVILLE)

OCT 21 1977
2970