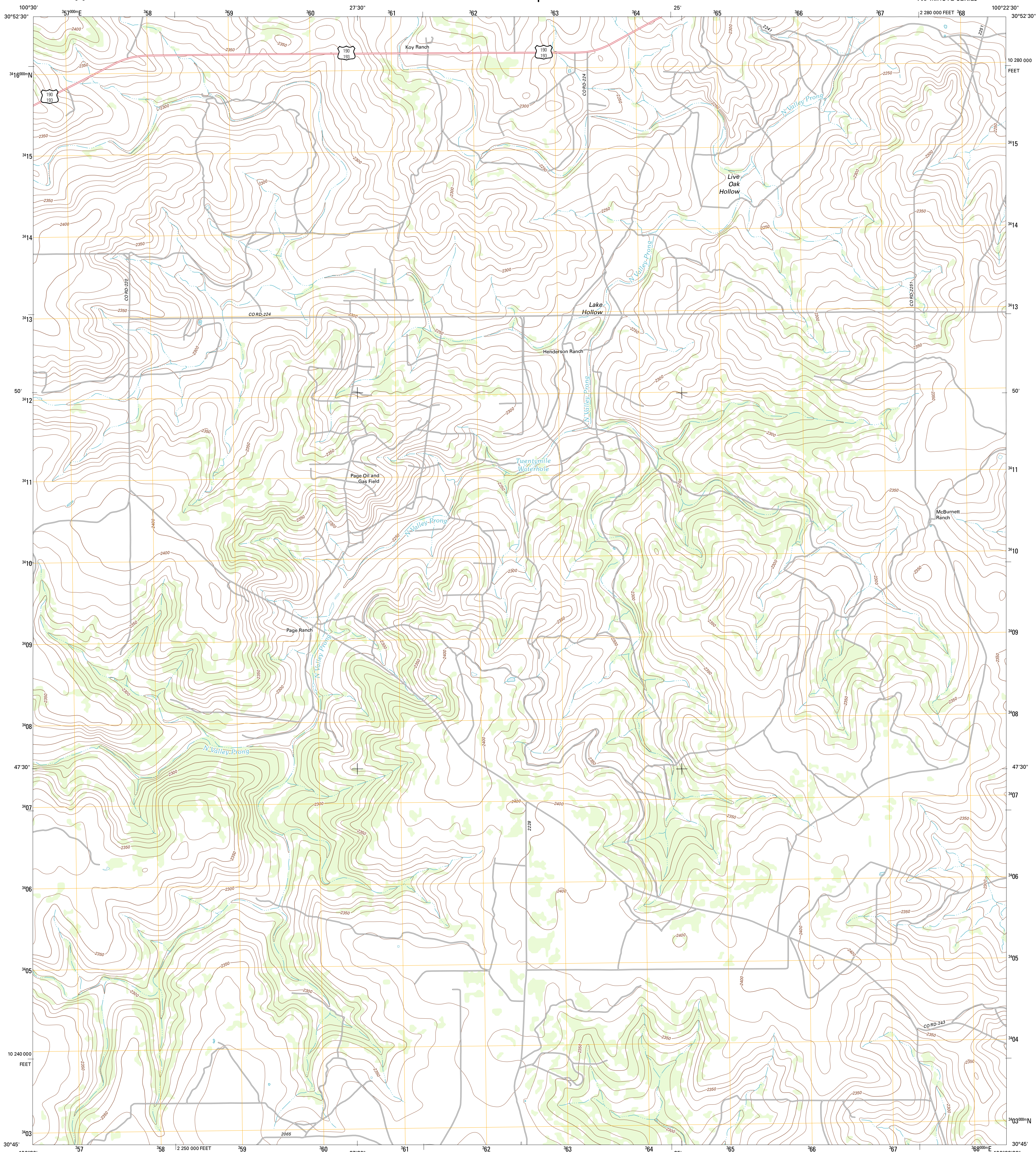




U.S. DEPARTMENT OF THE INTERIOR  
U. S. GEOLOGICAL SURVEY

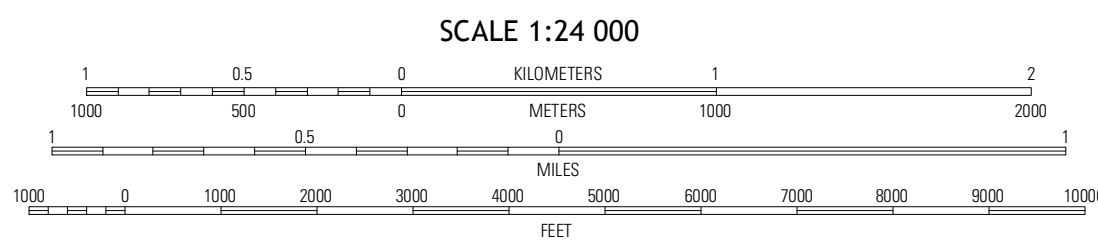
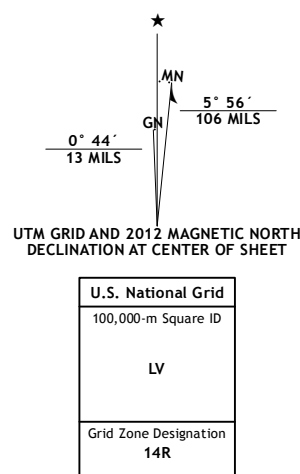


ADAMS SW QUADRANGLE  
TEXAS-SCHLEICHER CO.  
7.5-MINUTE SERIES



Produced by the United States Geological Survey  
North American Datum of 1983 (NAD83)  
World Geodetic System of 1984 (WGS84), Projection and  
1 000-meter grid: Universal Transverse Mercator, Zone 14R  
10 000-foot ticks: Texas Coordinate System of 1983 (central zone)

Imagery.....NAIP, May 2010 - August 2010  
Roads.....©2006-2012 TomTom  
Names.....©2012  
Hydrography.....National Hydrography Dataset, 2010  
Contours.....National Elevation Dataset, 2006  
Boundaries.....Census, IBWC, IBC, USGS, 1972 - 2012

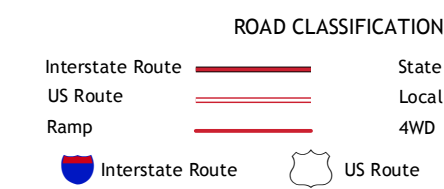


SCALE 1:24 000  
CONTOUR INTERVAL 10 FEET  
NORTH AMERICAN VERTICAL DATUM OF 1988  
This map was produced to conform with the  
National Geospatial Program US Topo Product Standard, 2011.  
A metadata file associated with this product is draft version 0.6.7



QUADRANGLE LOCATION

|             |                 |              |
|-------------|-----------------|--------------|
| Eldorado NE | Adams NW        | Adams        |
| Eldorado    | Adams SW        | Adams SE     |
| Sonora NE   | Buffalo Well NW | Buffalo Well |



ADAMS SW, TX  
2012

ADJOINING 7.5 QUADRANGLES