

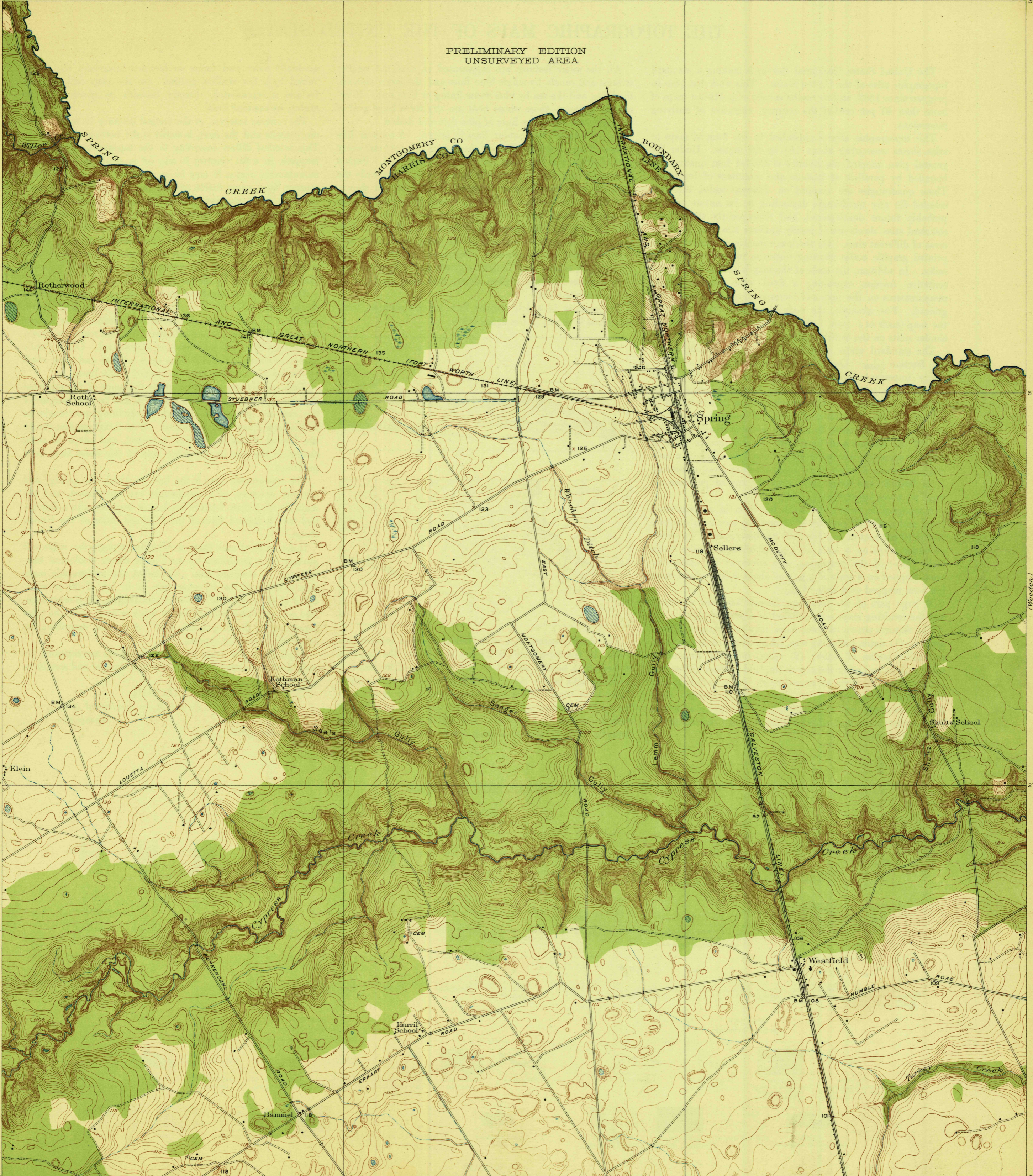
TOPOGRAPHY

DEPARTMENT OF THE INTERIOR
JOHN BARTON PAYNE, SECRETARY
U.S. GEOLOGICAL SURVEY
GEORGE OTIS SMITH, DIRECTOR

HARRIS COUNTY, TEXAS
W.H. WARD, COUNTY JUDGE
W.H. LLOYD, J.A. SMITH, W.H. KISER, D. BARKER,
COUNTY COMMISSIONERS

TEXAS
(HARRIS COUNTY)
SPRING QUADRANGLE

PRELIMINARY EDITION
UNSURVEYED AREA

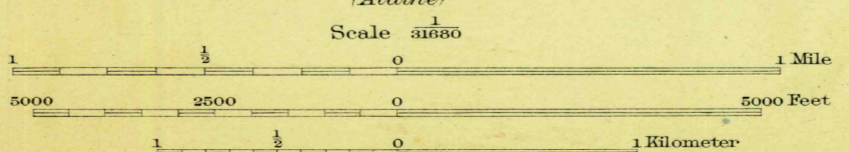


30°07'30" (Shawnee)
30°00' (Louetta)
30°00' (Humble)

95°22'30" (Humble)

W. H. Herron, Acting Chief Geographer,
C. H. Birdseye, Topographic Engineer in charge,
Topography by H. W. Peabody and J. B. Leavitt,
Control by E. L. McNair, D. S. Birkett, and R. R. Monbeck,
Surveyed in 1916.

H.W.P.
J.B.L.



Contour interval 1 foot.
Datum is mean sea level.

APPROXIMATE MEAN
DECLINATION, 1916

Edition of 1920.

SPRING