



Advance sheet
Subject to correction

DEPARTMENT OF THE INTERIOR
U. S. GEOLOGICAL SURVEY

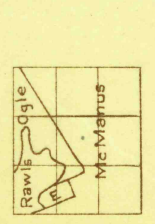
487-S-IV-W/2-NW/4
STATE OF TEXAS
BOARD OF WATER ENGINEERS
JOHN A. NORRIS, CHAIRMAN
C. S. CLARK, A. H. DUNLAP

TEXAS
CLEBURNE 3-b QUADRANGLE

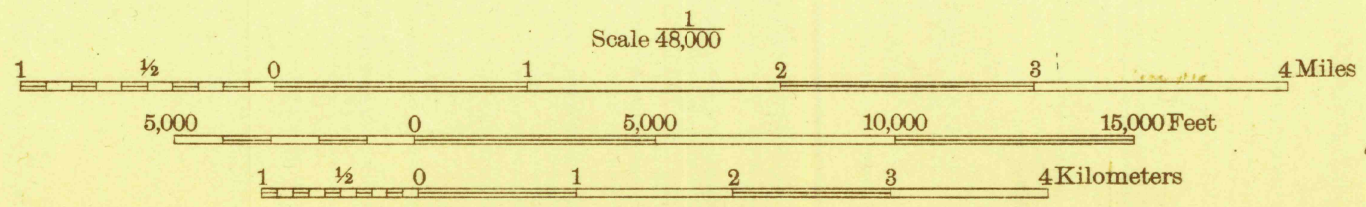


Topography by A. J. Ogle, J. M. Rawls, V. D. McManus,
and Elmer Elshire
Surveyed in 1923-1924

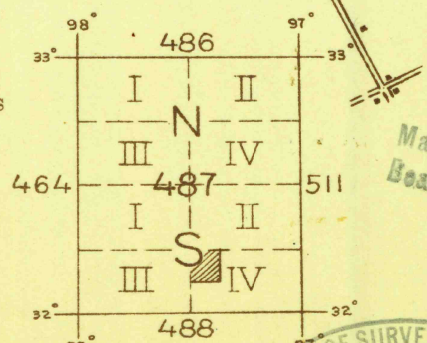
Polyconic projection. North American datum
5000 yard grid based upon U. S. zone system. D



TRUE NORTH
MAGNETIC NORTH
APPROXIMATE MEAN
DECLINATION, 1925



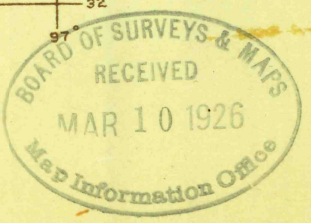
Contour interval 20 feet
10 foot contours in dashed lines
Datum is mean sea level



Map Information Office
Board of Surveys & Maps

CLEBURNE 3-b, TEX.

RETURN TO:
USGS NHD HISTORICAL MAP ARCHIVES



(PUB AS PMT OF BLUM 15' PARTIAL)