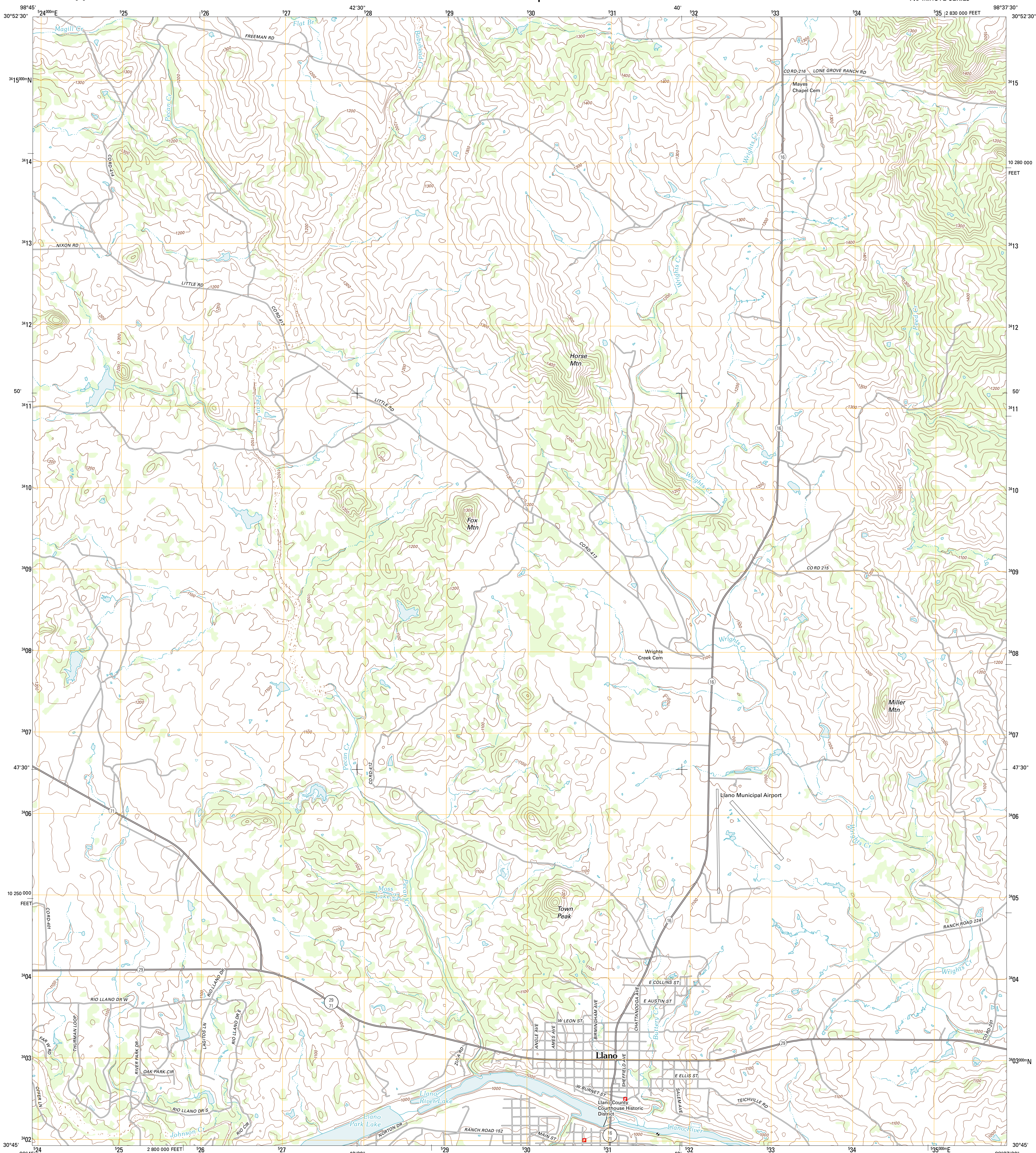




U.S. DEPARTMENT OF THE INTERIOR  
U. S. GEOLOGICAL SURVEY

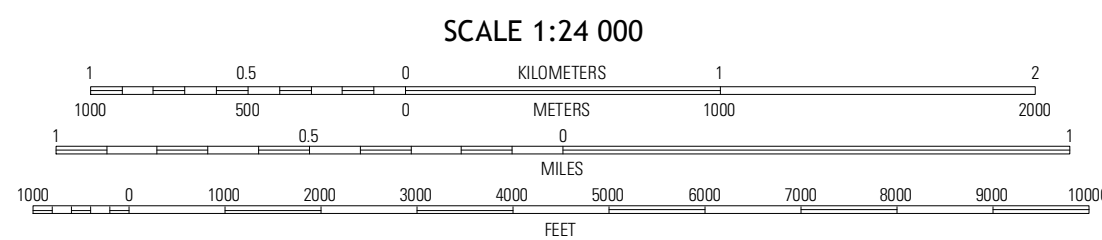
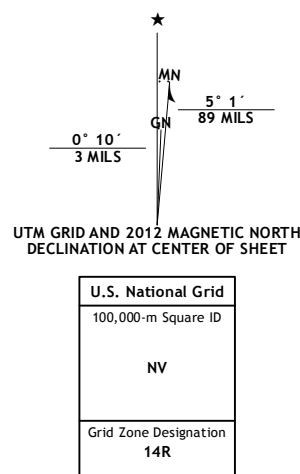


LLANO NORTH QUADRANGLE  
TEXAS-LLANO CO.  
7.5-MINUTE SERIES



Produced by the United States Geological Survey  
North American Datum of 1983 (NAD83)  
World Geodetic System of 1984 (WGS84). Projection and  
1 000-meter grid: Universal Transverse Mercator, Zone 14R  
10 000-foot ticks: Texas Coordinate System of 1983 (central  
zone)

Imagery.....NAIP, May 2010 - July 2010  
Roads.....©2006-2012 TomTom  
Names.....GNS, 2012  
Hydrography.....National Hydrography Dataset, 2010  
Contours.....National Elevation Dataset, 2010  
Boundaries.....Census, IBW, BC, USGS, 1972 - 2012



CONTOUR INTERVAL 20 FEET  
NORTH AMERICAN VERTICAL DATUM OF 1988

This map was produced to conform with the  
National Geospatial Program US Topo Product Standard, 2011.  
A metadata file associated with this product is draft version 0.6.7



QUADRANGLE LOCATION

Magill Mountain	Cherokee	Indian Hills
Valley Spring	Llano North	Lone Grove
Scotts Crossing	Llano South	Cap Mountain

ROAD CLASSIFICATION

Interstate Route	State Route
US Route	Local Road
Ramp	4WD
Interstate Route	US Route
	State Route

LLANO NORTH, TX  
2012

ADJOINING 7.5 QUADRANGLES