

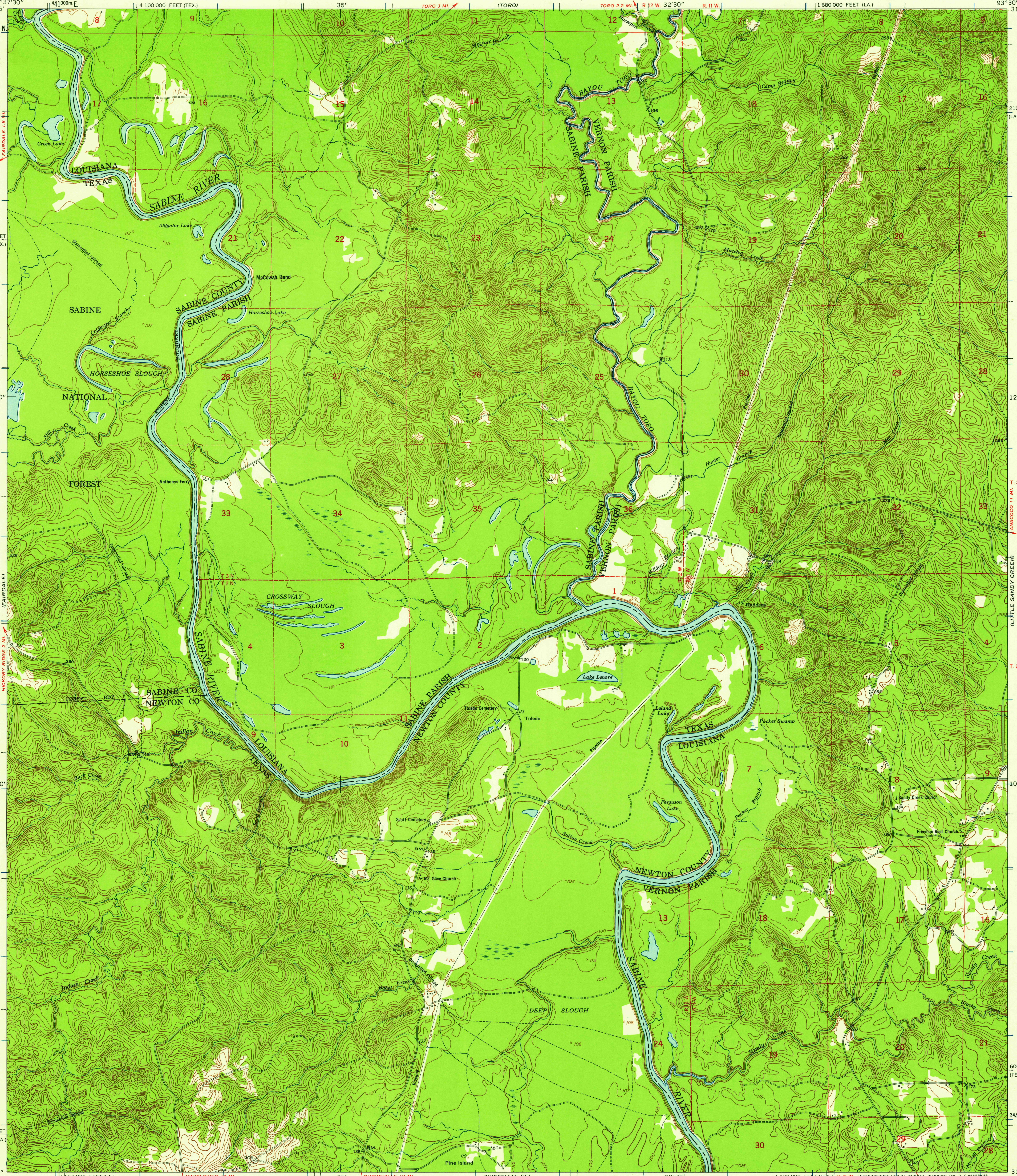
COLUMBUS
31°15'
3457000m N
12°30'
10'
170000 FEET (LA.)
31°07'30"
93°37'30"

UNITED STATES
DEPARTMENT OF THE INTERIOR
GEOLOGICAL SURVEY

UNITED STATES
DEPARTMENT OF THE ARMY
CORPS OF ENGINEERS

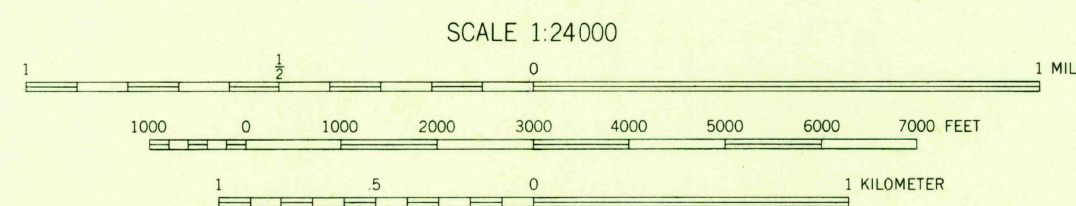
HADDENS QUADRANGLE
LOUISIANA-TEXAS
7.5 MINUTE SERIES (TOPOGRAPHIC)
NE/4 WIERGATE 15' QUADRANGLE

31°15'
210000 FEET (LA.)
12°30'
T.3 N.
T.2 N.
40'
600000 FEET (TEX.)
3444000m N
31°07'30"
93°30'



Mapped by the Army Map Service
Published for civil use by the Geological Survey
Control by USGS, USC&GS, USCE, and Louisiana Geodetic Survey
Topography from aerial photographs by photogrammetric methods
Aerial photographs taken 1951. Field check 1954
Polyconic projection. 1927 North American datum
10,000-foot grids based on Louisiana coordinate system,
north zone and Texas coordinate system, central zone
1000-meter Universal Transverse Mercator grid ticks,
zone 15, shown in blue
Dashed land lines indicate approximate locations
Unchecked elevations are shown in brown

TRUE NORTH
MAGNETIC NORTH
APPROXIMATE MEAN
DECLINATION, 1954



CONTOUR INTERVAL 10 FEET
DASHED LINES REPRESENT 5-FOOT CONTOURS
DATUM IS MEAN SEA LEVEL

THIS MAP COMPLIES WITH NATIONAL MAP ACCURACY STANDARDS
FOR SALE BY U. S. GEOLOGICAL SURVEY, DENVER 2 COLORADO OR WASHINGTON 25, D. C.
AND BY THE STATE OF LOUISIANA, DEPARTMENT OF PUBLIC WORKS, BATON ROUGE 4, LOUISIANA
A FOLDER DESCRIBING TOPOGRAPHIC MAPS AND SYMBOLS IS AVAILABLE ON REQUEST

USGS
Historical File
Topographic Division



U.S.G.S.
FILE COPY
TOPOGRAPHIC DIVISION

ROAD CLASSIFICATION
Light-duty ————— Unimproved dirt - - - - -

HADDENS, LA.-TEX.
NE/4 WIERGATE 15' QUADRANGLE
N3107.5-W9330/7.5

1954

NOV 18 1958
2415