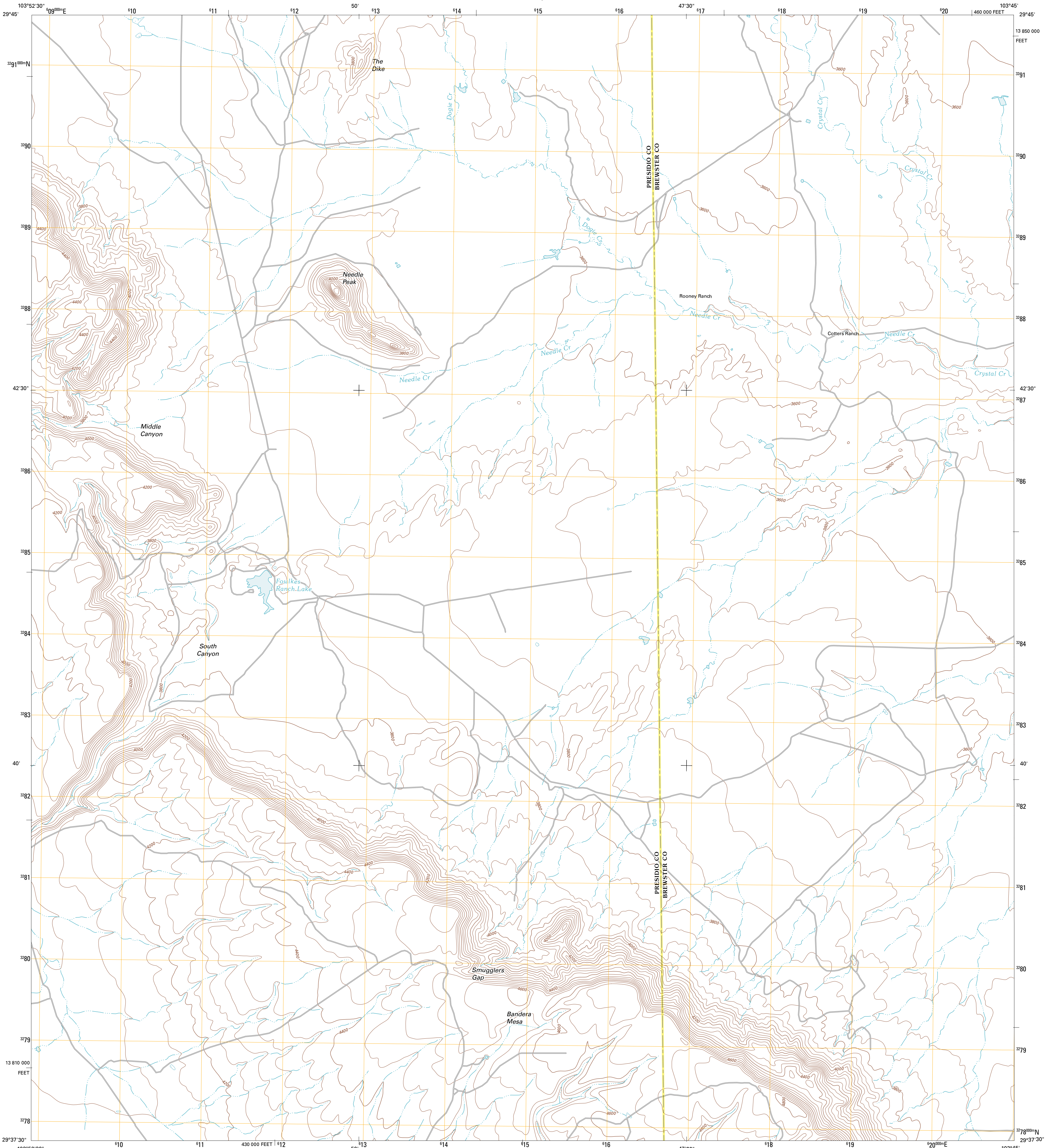




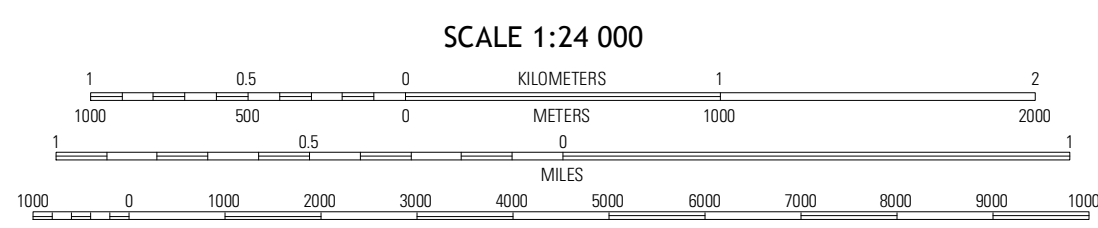
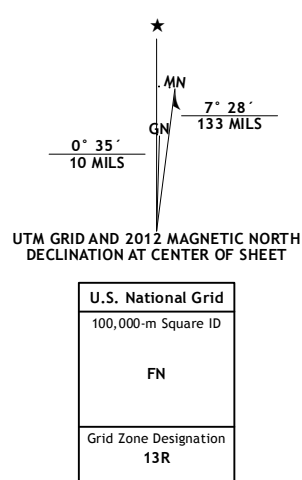
U.S. DEPARTMENT OF THE INTERIOR  
U. S. GEOLOGICAL SURVEY



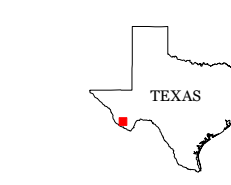
BANDERA MESA NORTH QUADRANGLE  
TEXAS  
7.5-MINUTE SERIES



Produced by the United States Geological Survey  
North American Datum of 1983 (NAD83)  
World Geodetic System of 1984 (WGS84). Projection and  
1 000-meter grid: Universal Transverse Mercator, Zone 13R  
10 000-foot ticks: Texas Coordinate System of 1983 (south  
central zone)

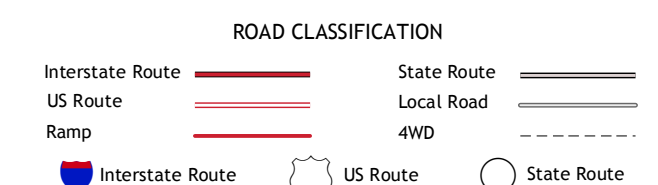


SCALE 1:24 000  
CONTOUR INTERVAL 40 FEET  
NORTH AMERICAN VERTICAL DATUM OF 1988  
This map was produced to conform with the  
National Geospatial Program US Topo Product Standard, 2011.  
A metadata file associated with this product is draft version 0.6.7



QUADRANGLE LOCATION

Puerto Potrillo	McKinney Mountain	Straddling Mountain
Horseshoe Mountains	<b>Bandera Mesa North</b>	Long Hills
La Mota Mountain	Bandera Mesa South	Agua Fria Mountain



BANDERA MESA NORTH, TX  
2012

ADJOINING 7.5 QUADRANGLES