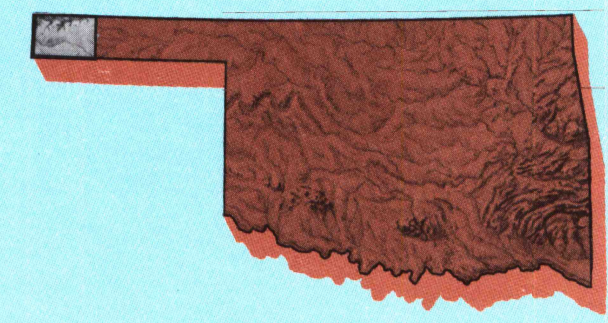


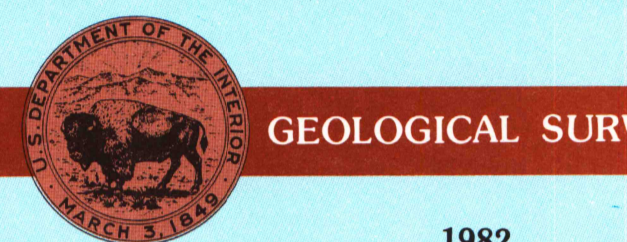
# Boise City

OKLAHOMA-COLORADO  
TEXAS-KANSAS  
1:100 000-scale metric  
topographic map



### 30 X 60 MINUTE QUADRANGLE SHOWING

- Contours and elevations in meters
- Highways, roads and other manmade structures
- Water features
- Woodland areas
- Geographic names



### Produced by the United States Geological Survey

Compiled from USGS 1:24 000-scale topographic maps dated 1968-1971. Planimetry revised from aerial photographs taken 1979 and other source data. Revised information not field checked. Map edited 1982.

Projection and 10 000-meter grid, zone 13. Universal Transverse Mercator. 25 000-foot grid ticks based on Oklahoma coordinate system, north zone, Colorado coordinate system, south zone, Texas coordinate system, north zone, and Kansas coordinate system, south zone.

1927 North American Datum  
To place on the projected North American Datum 1983 move the projection lines 1 meter north and 42 meters east.

There may be private inholdings within the boundaries of the National or State Reservations shown on this map. There are numerous gas, oil, and water wells on this map.

CONTOUR INTERVAL 10 METERS  
NATIONAL GEODETIC VERTICAL DATUM OF 1929  
ELEVATIONS SHOWN TO THE NEAREST METER

THIS MAP COMPLIES WITH NATIONAL MAP ACCURACY STANDARDS

CONVERSION TABLE		DECLINATION DIAGRAM		ADJOINING MAPS	
Meters	Feet	1°	2°	1	2
1	3.2808				
2	6.5616				
3	9.8424				
4	13.1232				
5	16.4040				
6	19.6848				
7	22.9656				
8	26.2464				
9	29.5272				
10	32.8080				

To convert meters to feet multiply by 3.2808  
To convert feet to meters multiply by 0.3048

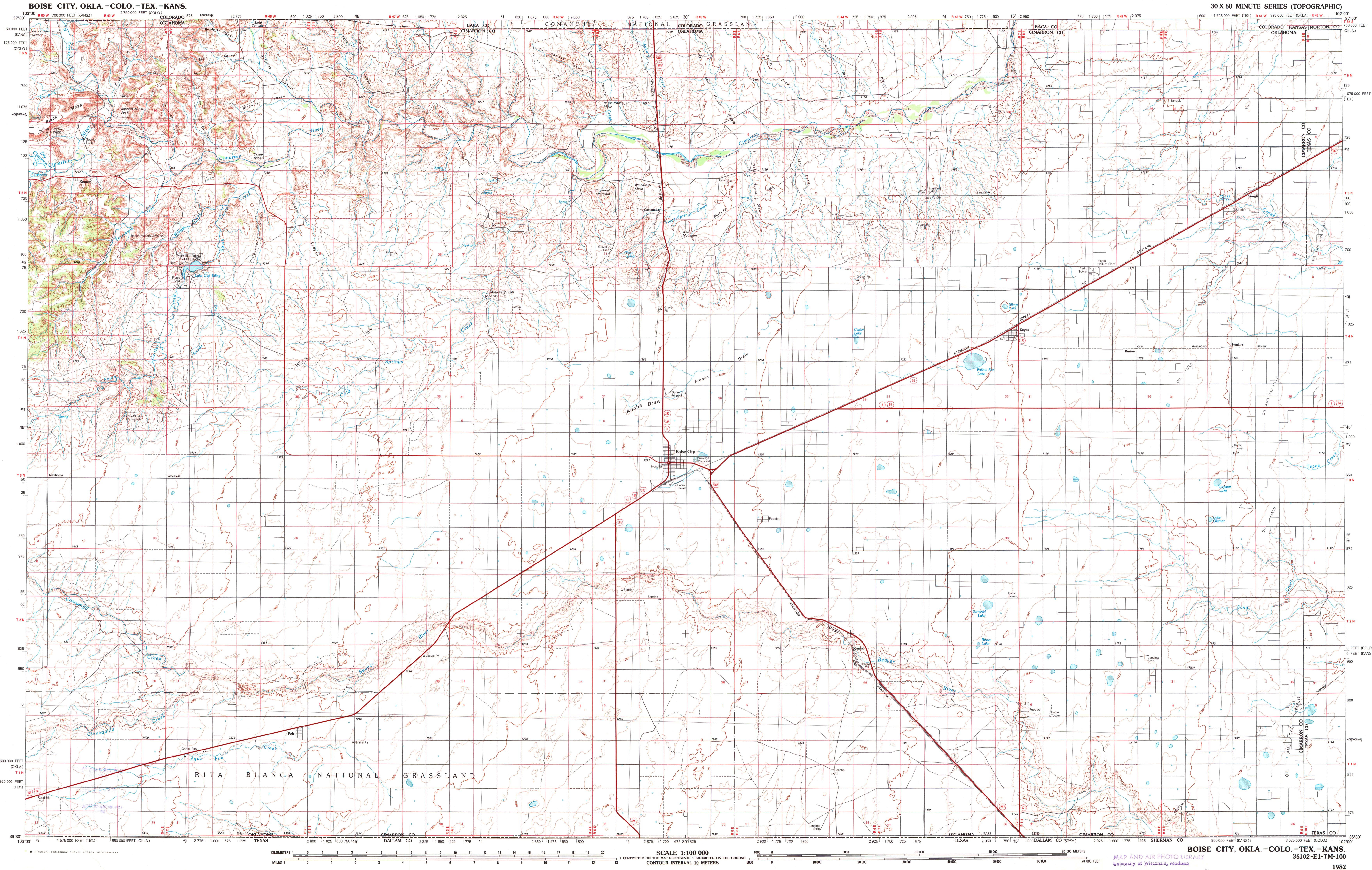
UTM grid convergence (RM) and 1983 magnetic declination (MM) at center of map. Diagram is approximate.

FOR SALE BY U. S. GEOLOGICAL SURVEY, DENVER, COLORADO 80225  
OR RESTON, VIRGINIA 22092

### Topographic Map Symbols

- Primary highway, hard surface
- Secondary highway, hard surface
- Light duty road, principal street, hard or improved surface
- Other road or street, trail
- Roads marker: interstate, U.S., State
- Railroad, standard gauge, narrow gauge
- Bridge, overpass, underpass
- Tunnel: road, railroad
- Built up area, locality, elevation
- Airport: landing field, landing strip
- National boundary
- State boundary
- County boundary
- National or State reservation boundary
- Land grant boundary
- U.S. public lands survey: range, township, section
- Range, township, section line, protracted
- Power transmission line, pipeline
- Dam, dam with lock
- Cemetery, building
- Windmill, water well, spring
- Mineral shaft, salt or cave, mine, quarry, gravel pit
- Campground, picnic area, U.S. location monument
- Rubble, cliff dwelling
- Distorted surface: strip mine, lava, sand
- Contour: index, intermediate, supplementary
- Barometric contour: index, intermediate
- Stream, lake, perennial, intermittent
- Rapid, large and small; falls, large and small
- Area to be submerged; marsh, swamp
- Land subject to controlled inundation; woodland
- Salt; mangrove
- Orchard; vineyard

A pamphlet describing topographic maps is available on request



MAP AND AIR PHOTO LIBRARY  
UNIVERSITY OF WISCONSIN, MADISON

SET  
8006-918