

TOPOGRAPHY

HARRIS COUNTY, TEXAS

W. H. WARD, COUNTY JUDGE

W. H. LLOYD, J. A. SMITH, W. H. KISER, D. BARKER
COUNTY COMMISSIONERS

Advance sheet.
Subject to correction.

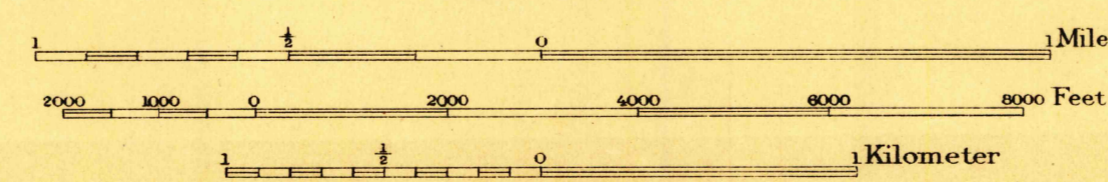
TEXAS
(HARRIS COUNTY)
BURNETT BAY QUADRANGLE

DEPARTMENT OF THE INTERIOR
FRANKLIN K. LANE, SECRETARY
U. S. GEOLOGICAL SURVEY
GEORGE OTIS SMITH, DIRECTOR



W. H. Herron, Acting Chief Geographer
C. H. Birdseye Topographic Engineer in charge
Topography by S. T. Penick and T. P. Pendleton
Control by Corps of Engineers U. S. Army
E. L. McNair D. S. Birkett and R. R. Monbeck
Surveyed in 1916

Penick
Penick



Contour interval 1-foot
Datum is mean sea level

DECIMAL POINT IS LOCATION OF ELEVATION
BURNETT BAY
TEX.
USGS
Historical File
Topographic Division

APPROXIMATE MEAN DECLINATION 1915