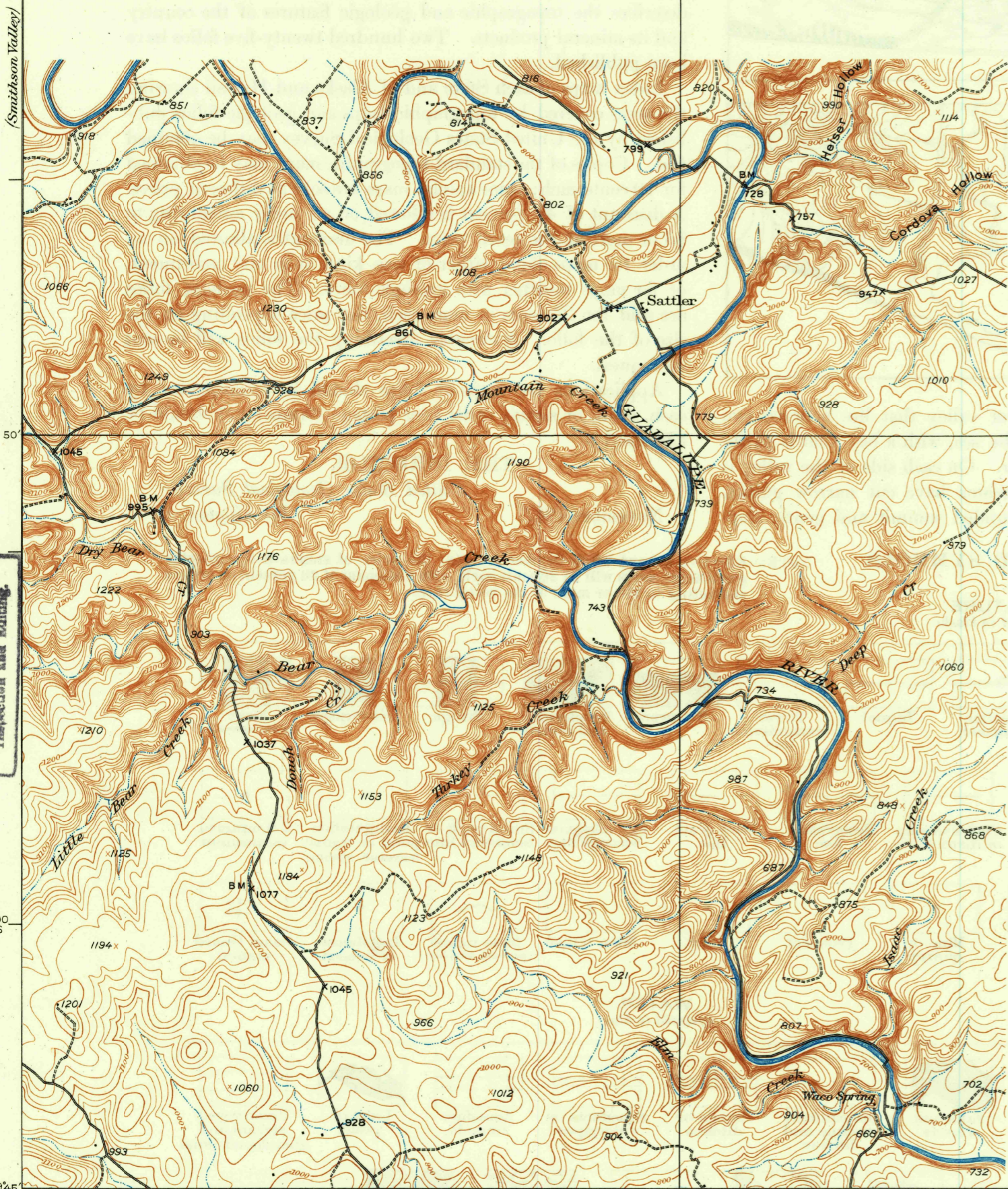


(Anstey)  
225000

U. S. G. S.  
FILE COPY  
Inspection and Editing.

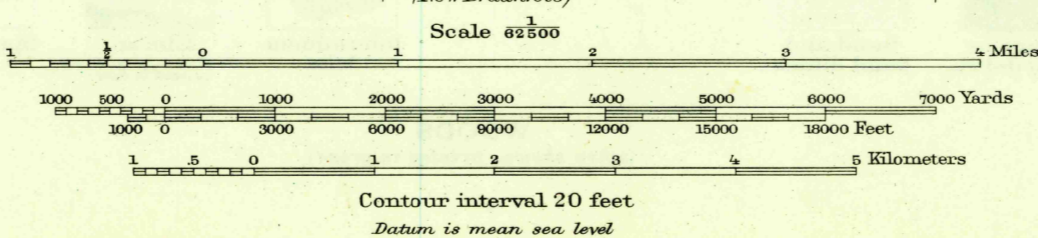


UNSURVEYED AREA

U. S. G. S.  
FILE COPY  
Inspection and Editing.

Topography by B.A. Jenkins  
Culture and drainage in part compiled from  
aerial photographs taken by Air Corps, U.S. Army  
Control by U.S. Geological Survey and U.S. Coast  
and Geodetic Survey  
Surveyed in 1925

93°  
TRUE NORTH  
MAGNETIC NORTH  
APPROXIMATE MEAN  
DECLINATION, 1925



USGS  
Historical File  
Topographic Division

U. S. G. S.  
FILE COPY  
Inspection and Editing.

Polyconic projection, North American datum  
5000 yard grid based upon U.S. zone system, D

HUNTER, TEX.  
Edition of 1929  
reprinted 1949  
N2945-W9800/15