

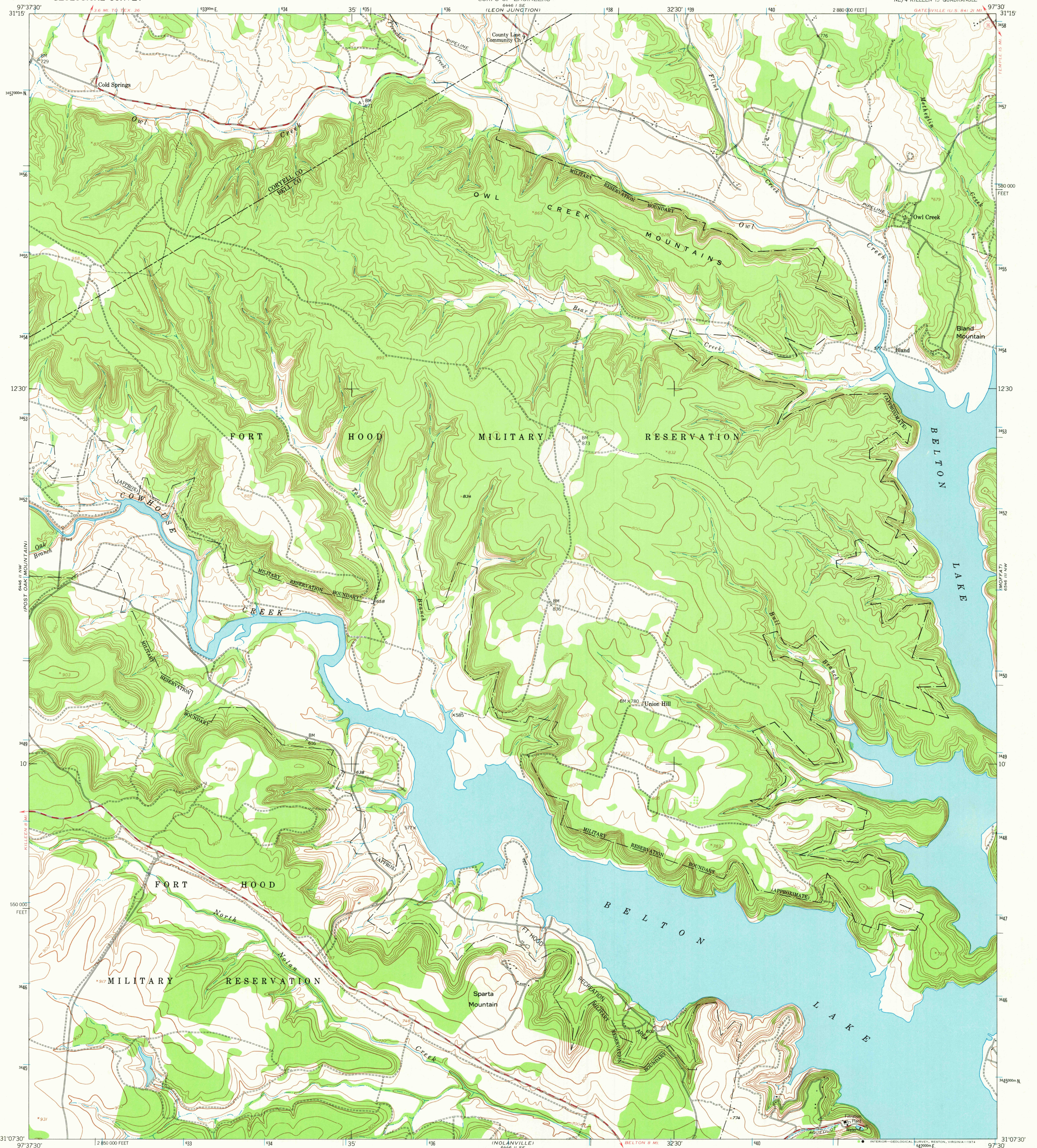
6446 1/4 SW
NORTH FORT HOOD

UNITED STATES
DEPARTMENT OF THE INTERIOR
GEOLOGICAL SURVEY

UNITED STATES
DEPARTMENT OF THE ARMY
CORPS OF ENGINEERS

BLAND QUADRANGLE
TEXAS
7.5 MINUTE SERIES (TOPOGRAPHIC)
NE/4 KILLEEN 15 QUADRANGLE

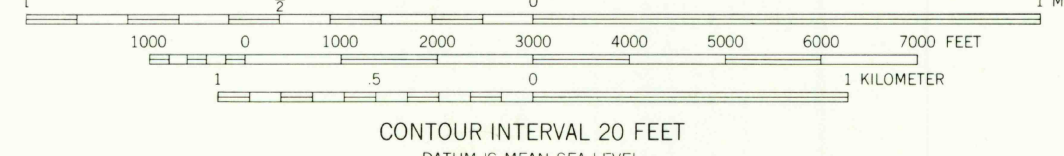
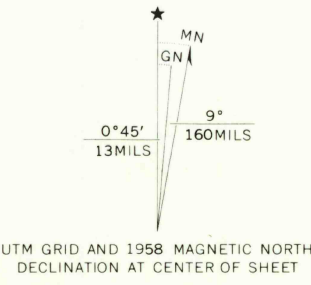
6446 1/4 SW
EAGLE SPRINGS



Mapped by the Army Map Service
Published for civil use by the Geological Survey
Control by USGS, USC&GS, and USCE

Topography from aerial photographs by photogrammetric methods
Aerial photographs taken 1947. Planimetric detail revised from
aerial photographs taken 1955-1956. Field check 1958

Polyconic projection. 1927 North American datum
10,000-foot grid based on Texas coordinate system,
central zone.
1000-meter Universal Transverse Mercator grid ticks,
zone 14, shown in blue



CONTOUR INTERVAL 20 FEET
DATUM IS MEAN SEA LEVEL



USGS
Historical File
Topographic Division

ROAD CLASSIFICATION
Heavy-duty ——— Light-duty ———
Medium-duty ——— Unimproved dirt - - - - -
State Route ○

BLAND, TEX.
NE/4 KILLEEN 15 QUADRANGLE
N3107.5-W9730/7.5

MAR 07 1974

1958
AMS 6446 1/4 NE-SERIES V882

THIS MAP COMPLIES WITH NATIONAL MAP ACCURACY STANDARDS
FOR SALE BY U.S. GEOLOGICAL SURVEY, DENVER, COLORADO 80225, OR RESTON, VIRGINIA 22092
A FOLDER DESCRIBING TOPOGRAPHIC MAPS AND SYMBOLS IS AVAILABLE ON REQUEST