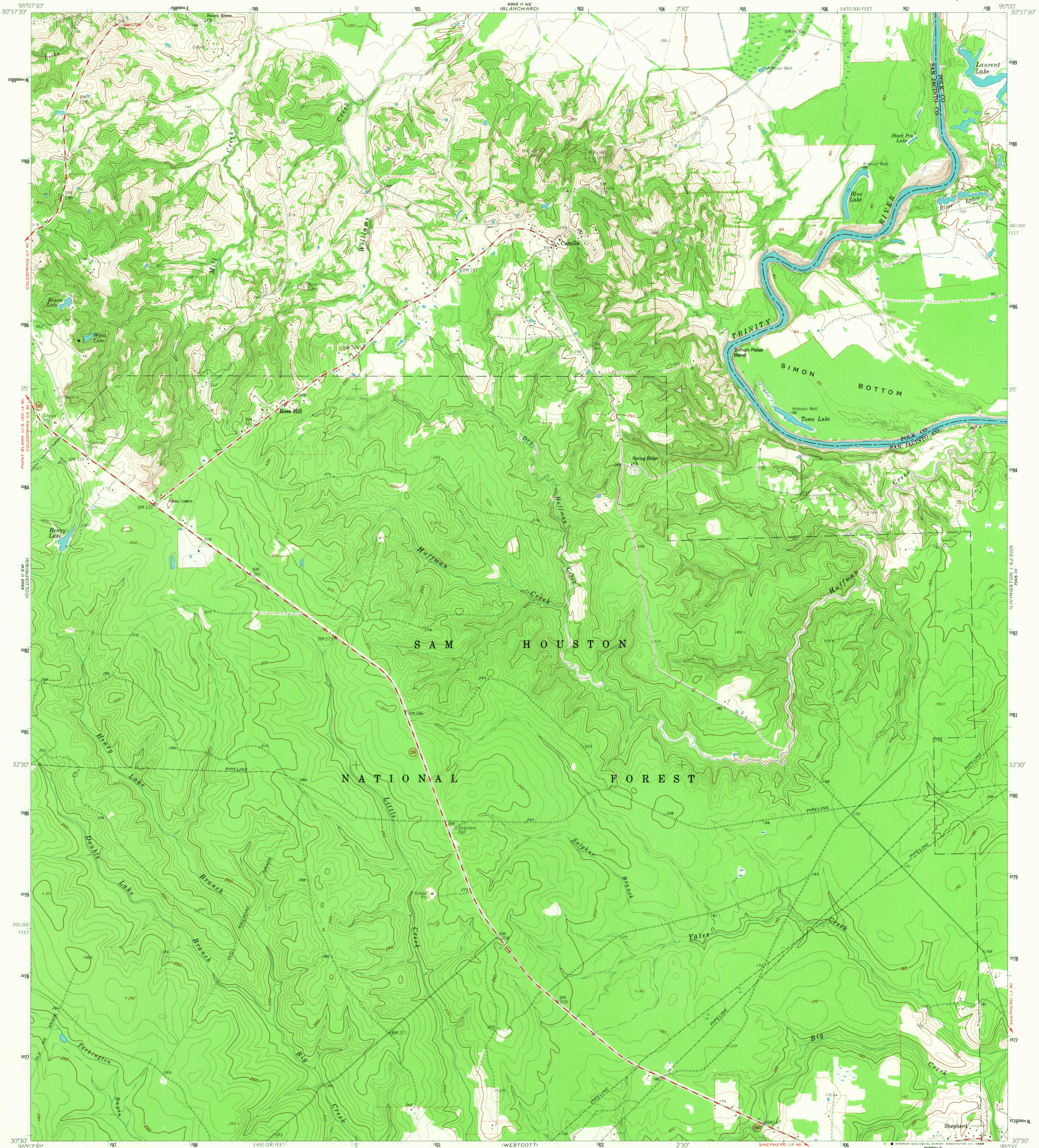
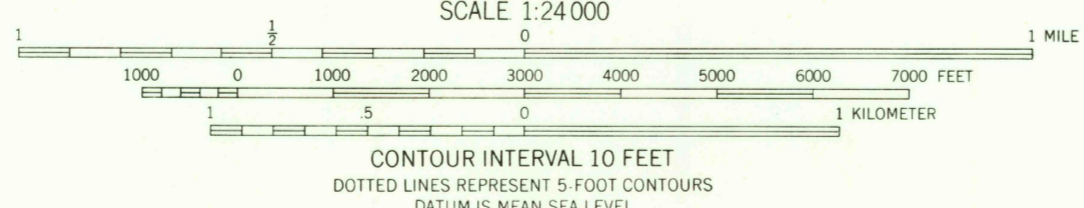
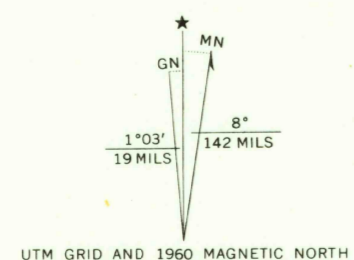


7.5 MINUTE SERIES (TOPOGRAPHIC)
TOMAS BLVD
1:62,500



Mapped, edited, and published by the Geological Survey
Control by USGS and USC&GS
Topography from aerial photographs by photogrammetric methods
Aerial photographs taken 1958. Field check 1960
Polyconic projection. 1927 North American datum
10,000-foot grid based on Texas coordinate system,
central zone
1000 meter Universal Transverse Mercator grid ticks,
zone 15, shown in blue
Fine red dashed lines indicate selected fence and field lines
where generally visible on aerial photographs
This information is unchecked



CONTOUR INTERVAL 10 FEET
DOTTED LINES REPRESENT 5 FOOT CONTOURS
DATUM IS MEAN SEA LEVEL



ROAD CLASSIFICATION

Medium-duty	Light-duty
Unimproved dirt	State Route

THIS MAP COMPLIES WITH NATIONAL MAP ACCURACY STANDARDS
FOR SALE BY U. S. GEOLOGICAL SURVEY, DENVER, COLORADO 80225, OR WASHINGTON, D. C. 20242
A FOLDER DESCRIBING TOPOGRAPHIC MAPS AND SYMBOLS IS AVAILABLE ON REQUEST

U.S.G.S.
7.5 MINUTE COPY
TOPOGRAPHIC DIVISION

CAMILLA, TEX.
N3030-W9500/7.5
1960

3255
SEP 20 1968

AMS 6945 II SE—SERIES V8R2