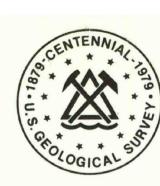


6548 II SE
172 AC

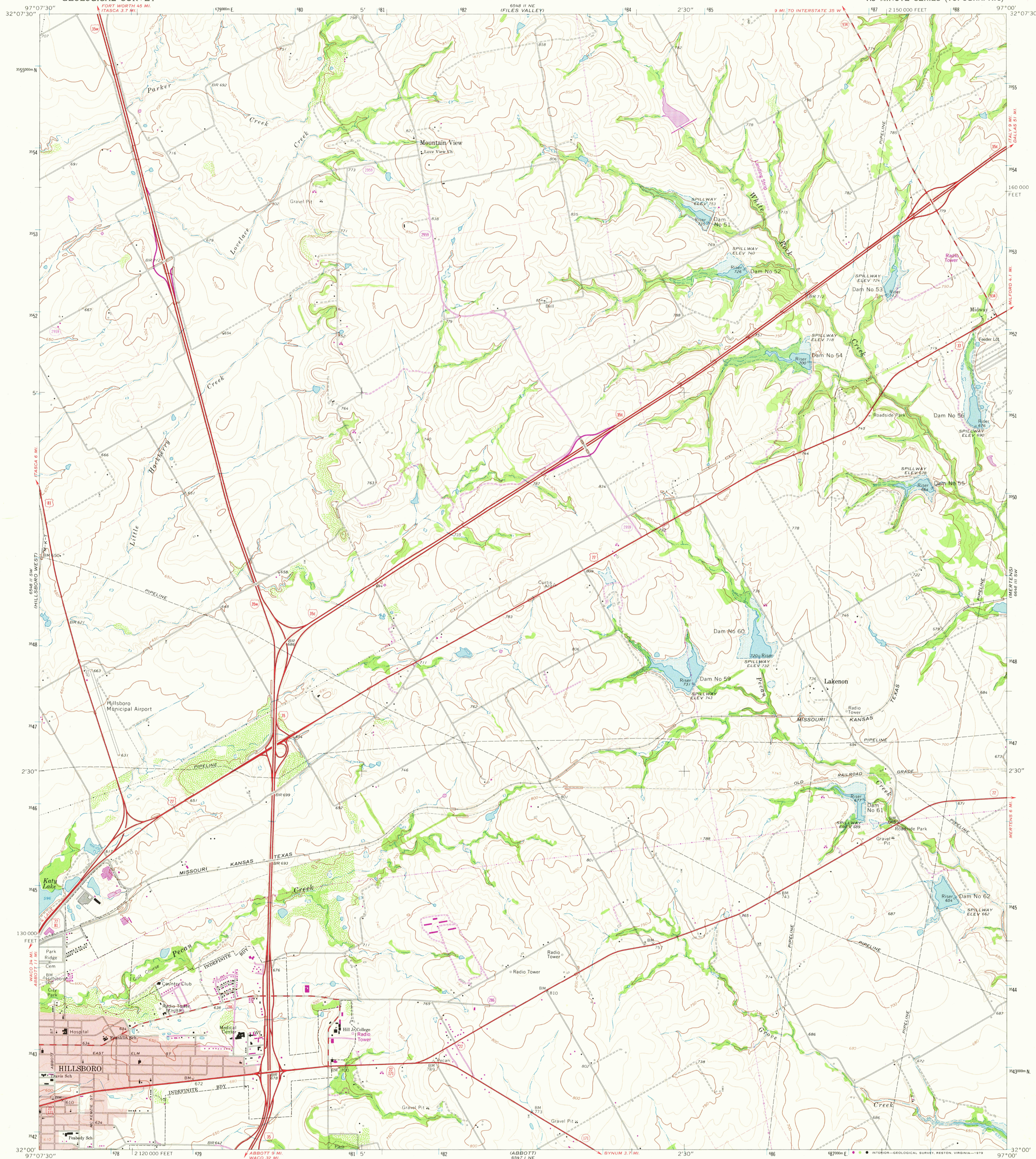
UNITED STATES
DEPARTMENT OF THE INTERIOR
GEOLOGICAL SURVEY



STATE OF TEXAS
TEXAS WATER DEVELOPMENT BOARD

HILLSBORO EAST QUADRANGLE
TEXAS—HILL CO.
7.5 MINUTE SERIES (TOPOGRAPHIC)

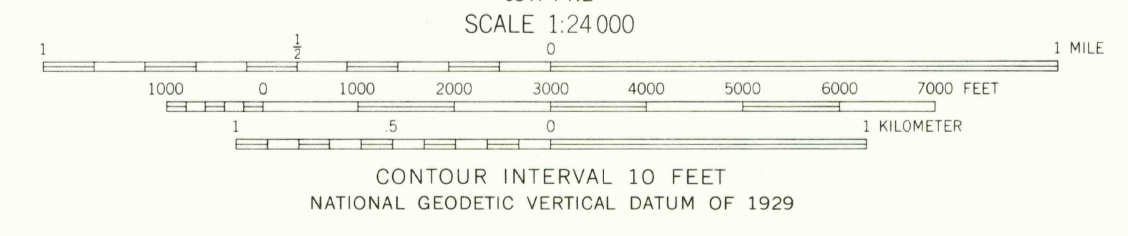
6548 II SW
171 AC



6548 II SW
171 AC

Mapped, edited, and published by the Geological Survey
Control by USGS and USC&GS
Topography by photogrammetric methods from aerial
photographs taken 1965. Field checked 1966
Polyconic projection. 1927 North American datum
10,000-foot grid based on Texas coordinate system,
north central zone
1000-meter Universal Transverse Mercator grid ticks,
zone 14, shown in blue
Red tint indicates areas in which only landmark buildings are shown
Fine red dashed lines indicate selected fence lines
Areas covered by dashed light-blue pattern are subject
to controlled inundation

Revisions shown in purple and woodland compiled from
aerial photographs taken 1976 and other source data.
This information not field checked. Map edited 1978



ROAD CLASSIFICATION
Heavy-duty ——— Light-duty ———
Medium-duty ——— Unimproved dirt ———
○ Interstate Route ○ U.S. Route ○ State Route
APR 1 1 1978

HILLSBORO EAST, TEX.
N3200—W9700/7.5
1966
PHOTOREVISED 1978
AMS 6548 II SE—SERIES V882

THIS MAP COMPLIES WITH NATIONAL MAP ACCURACY STANDARDS
FOR SALE BY U. S. GEOLOGICAL SURVEY, DENVER, COLORADO 80225, OR RESTON, VIRGINIA 22092
A FOLDER DESCRIBING TOPOGRAPHIC MAPS AND SYMBOLS IS AVAILABLE ON REQUEST

3297-111

2450