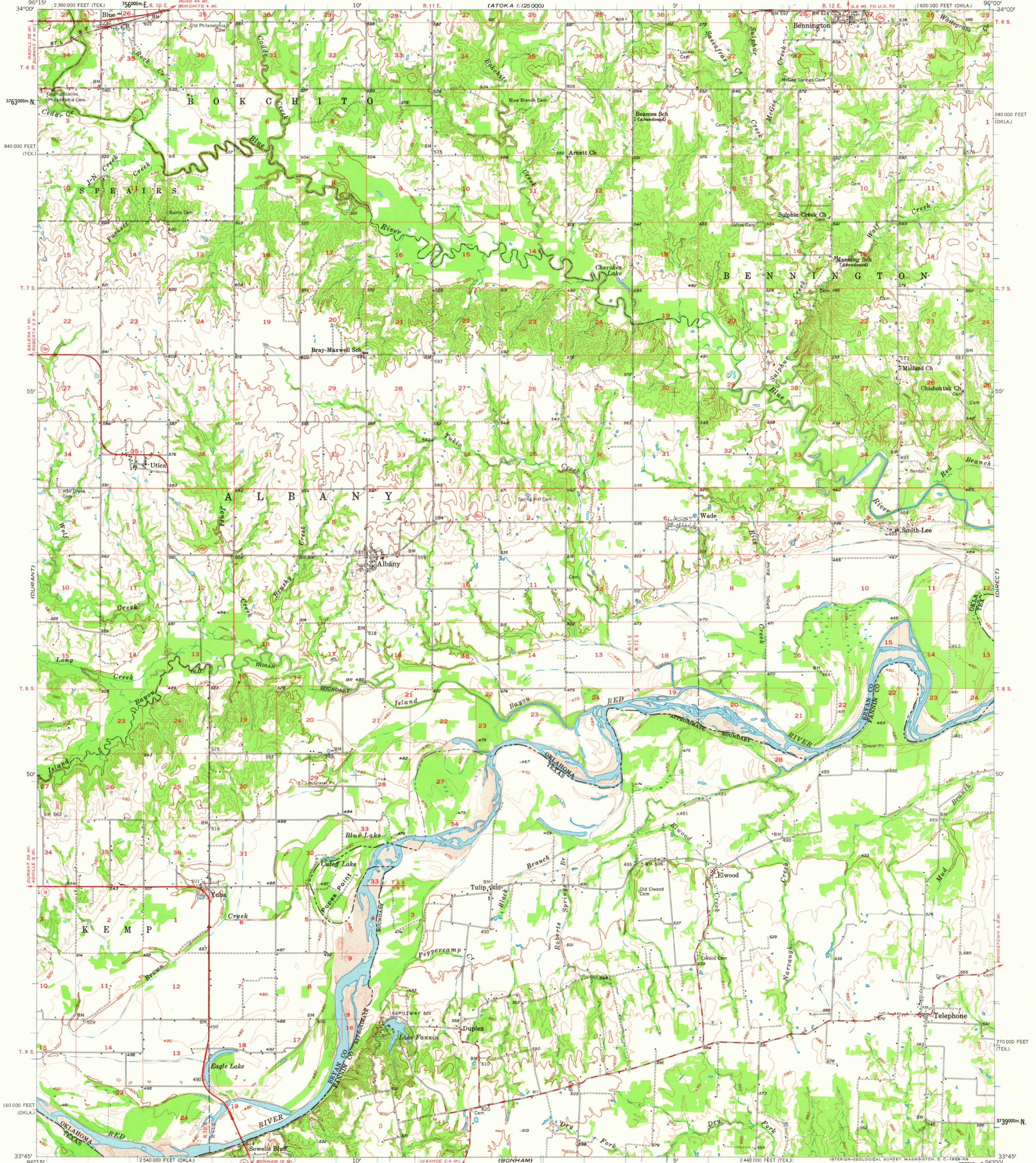


(ATOKA 1:125000)

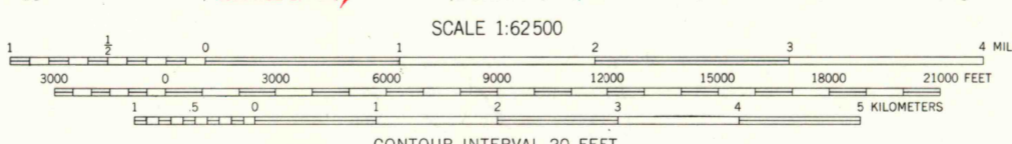
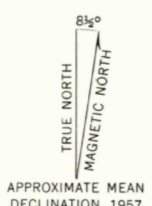
(ANTLERS 1:125000)

UNITED STATES  
DEPARTMENT OF THE INTERIOR  
GEOLOGICAL SURVEY

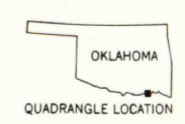
WADE QUADRANGLE  
OKLAHOMA—TEXAS  
15 MINUTE SERIES (TOPOGRAPHIC)



Mapped, edited, and published by the Geological Survey  
Control by USGS, USC&GS, USCE, and Oklahoma Geodetic Survey  
Topography from aerial photographs by photogrammetric methods  
and by planetable surveys 1957. Aerial photographs taken 1955  
Polyconic projection. 1927 North American datum  
10,000-foot grids based on Oklahoma coordinate system, south zone  
and Texas coordinate system, north central zone  
1000-meter Universal Transverse Mercator grid ticks,  
zone 14, shown in blue



CONTOUR INTERVAL 20 FEET  
DOTTED LINES REPRESENT LOGROT CONTOURS  
DATUM IS MEAN SEA LEVEL



ROAD CLASSIFICATION

Heavy-duty	Light-duty
Medium-duty	Unimproved dirt
U. S. Route	State Route

THIS MAP COMPLIES WITH NATIONAL MAP ACCURACY STANDARDS  
FOR SALE BY U. S. GEOLOGICAL SURVEY, DENVER 2, COLORADO OR WASHINGTON 25, D. C.  
A FOLDER DESCRIBING TOPOGRAPHIC MAPS AND SYMBOLS IS AVAILABLE ON REQUEST

WADE, OKLA.—TEX.  
N 3345—W 9600/15

1957

RETURN TO:  
NHD HISTORICAL MAP ARCHIVES  
USGS NATIONAL CENTER, MS-522  
RESTON, VA 22092