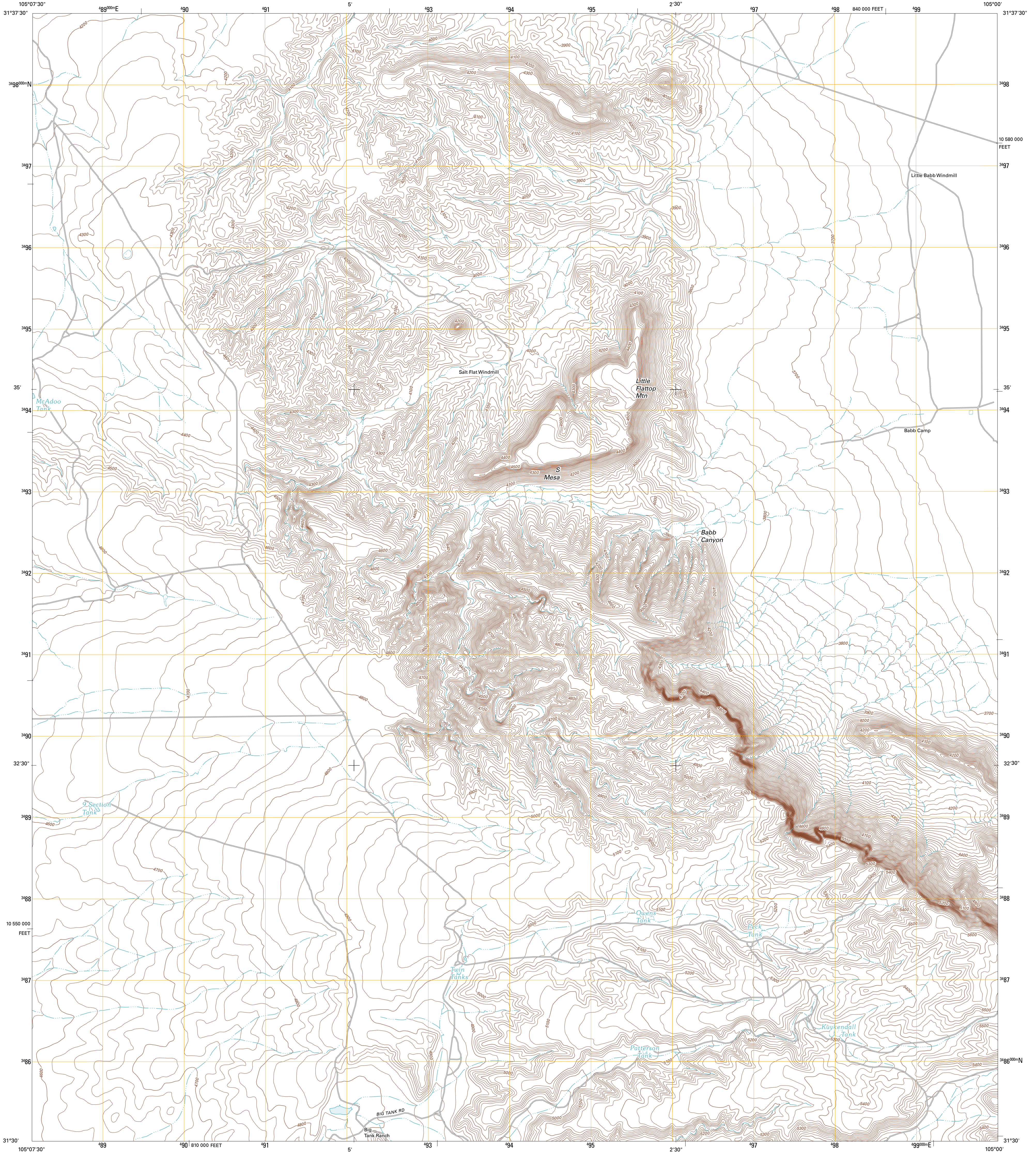




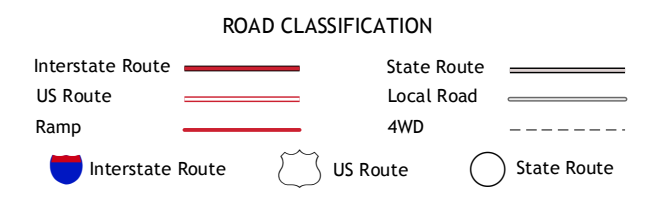
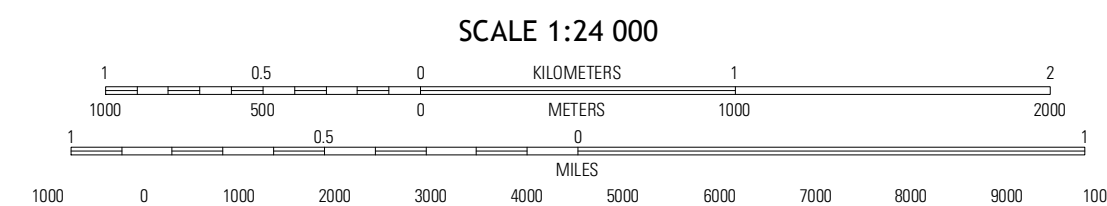
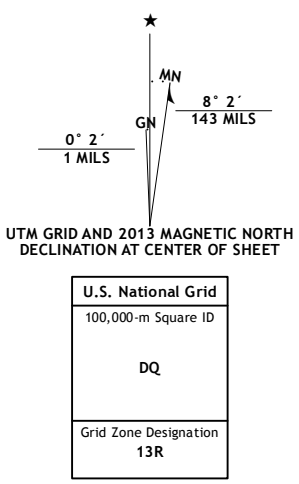
U.S. DEPARTMENT OF THE INTERIOR  
U. S. GEOLOGICAL SURVEY



BABB CANYON QUADRANGLE  
TEXAS-HUDSPETH CO.  
7.5-MINUTE SERIES



Produced by the United States Geological Survey  
North American Datum of 1983 (NAD83)  
World Geodetic System of 1984 (WGS84) Projection and  
1 000-meter grid: Universal Transverse Mercator, Zone 13R  
10 000-foot ticks: Texas Coordinate System of 1983 (central zone)



QUADRANGLE LOCATION

Black Mountain NW	Salt Flat	Bitter Well Mountain NW
Black Mountain	Babb Canyon	Bitter Well Mountain SW
Norton Mesa	Sneed Mountain NE	Apache Peak

ADJOINING 7.5 QUADRANGLES

CONTOUR INTERVAL 20 FEET  
NORTH AMERICAN VERTICAL DATUM OF 1988

This map was produced to conform with the National Geospatial Program US Topo Product Standard, 2011. A metadata file associated with this product is draft version 0.6.7

BABB CANYON, TX  
2013