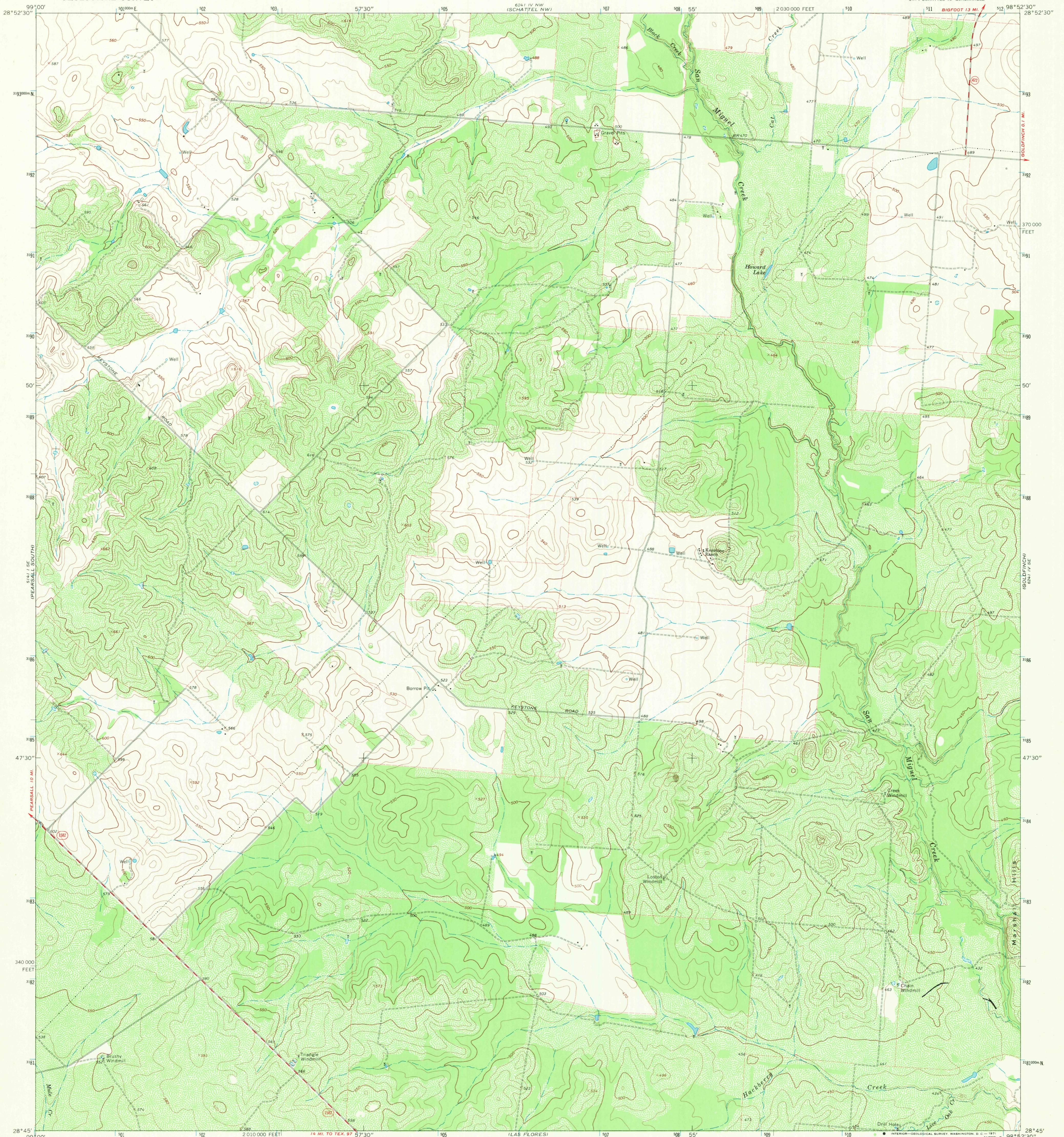
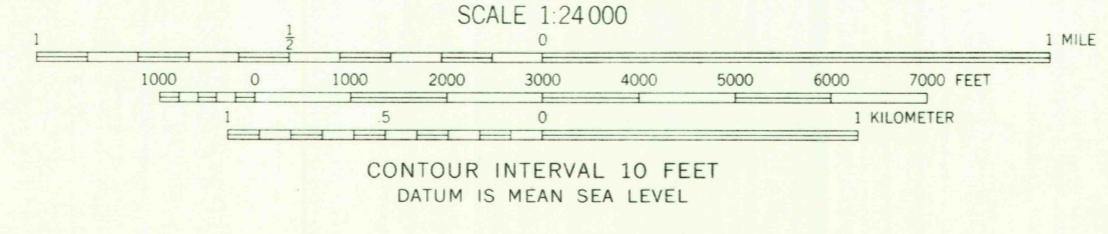
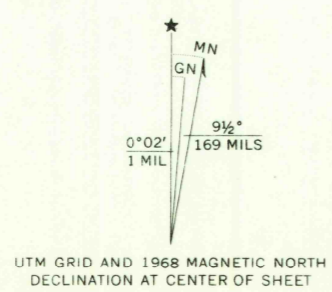


UNITED STATES
DEPARTMENT OF THE INTERIOR
GEOLOGICAL SURVEY

KEYSTONE RANCH QUADRANGLE
TEXAS—FRIO CO.
7.5 MINUTE SERIES (TOPOGRAPHIC)
SW 4 SCHATTEL 15' QUADRANGLE



Mapped, edited, and published by the Geological Survey
Control by USGS and USC&GS
Topography by photogrammetric methods from aerial
photographs taken 1967. Field checked 1968
Polyconic projection. 1927 North American datum
10,000-foot grid based on Texas coordinate system,
south central zone
1000-meter Universal Transverse Mercator grid ticks,
zone 14, shown in blue
Fine red dashed lines indicate selected fence lines



ROAD CLASSIFICATION
Secondary highway, all weather, Light duty road, all weather,
hard surface ——— improved surface
Unimproved road, fair or dry
weather ———
○ State Route

THIS MAP COMPLIES WITH NATIONAL MAP ACCURACY STANDARDS
FOR SALE BY U. S. GEOLOGICAL SURVEY, DENVER, COLORADO 80225, OR WASHINGTON, D. C. 20242
A FOLDER DESCRIBING TOPOGRAPHIC MAPS AND SYMBOLS IS AVAILABLE ON REQUEST

KEYSTONE RANCH, TEX. AUG 13 1971
SW 4 SCHATTEL 15' QUADRANGLE
N2845-W9852.5/7.5

1968
AMS 6241 IV SW—SERIES V882
USGS
HISTORICAL FILE
TOPOGRAPHIC DIVISION

3240