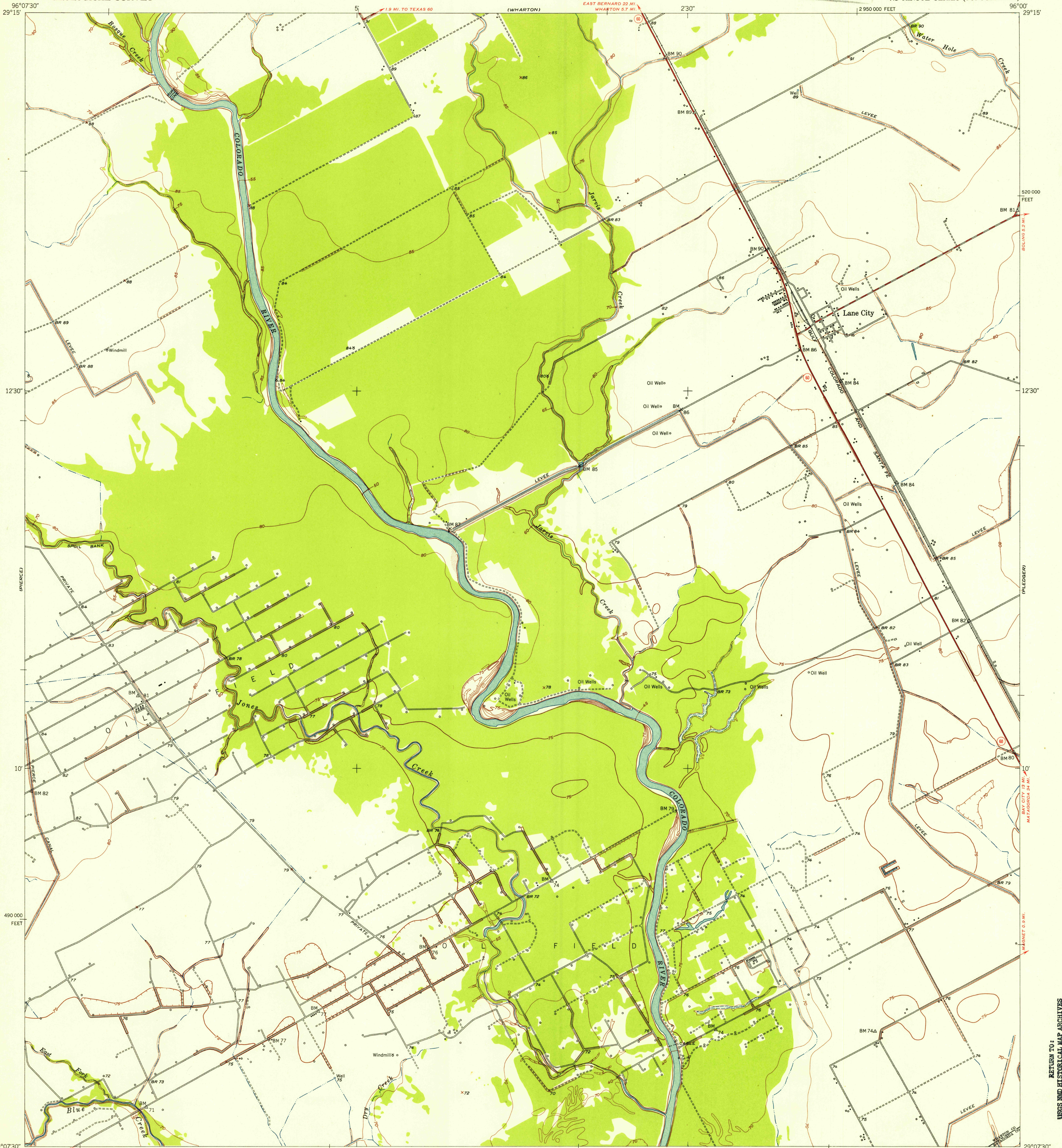
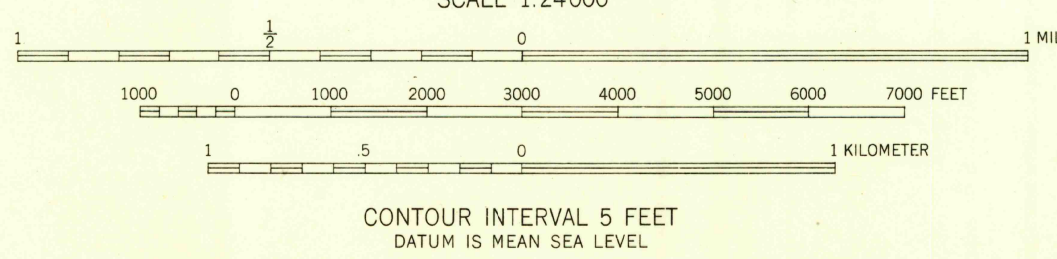


U.S.G.S.
FILE COPY
Inspection and Editing



Mapped, edited, and published by the Geological Survey
Control by USGS, USC&GS, and Texas Reclamation Department
Culture and drainage in part compiled from aerial photographs
taken 1946-1947. Topography by plane-table surveys 1951-1952
and in part by the Texas Reclamation Department
Polycyclic projection. 1927 North American datum
10,000-foot grid based on Texas coordinate system;
south central zone

TRUE NORTH
MAGNETIC NORTH
APPROXIMATE MEAN
DECLINATION, 1952



ROAD CLASSIFICATION

Heavy-duty	LANE & LANE	Light-duty
Medium-duty	LANE & LANE	Unimproved dirt
U. S. Route		State Route

THIS MAP COMPLIES WITH NATIONAL MAP ACCURACY STANDARDS
FOR SALE BY U. S. GEOLOGICAL SURVEY, FEDERAL CENTER, DENVER, COLORADO OR WASHINGTON 25, D. C.
A FOLDER DESCRIBING TOPOGRAPHIC MAPS AND SYMBOLS IS AVAILABLE ON REQUEST

U.S.G.S.
FILE COPY
Inspection and Editing

LANE CITY, TEX.
N2907.5-W9600/7.5
1952

RETURN TO:
USGS AND HISTORICAL MAP ARCHIVES

JAN 26 1954