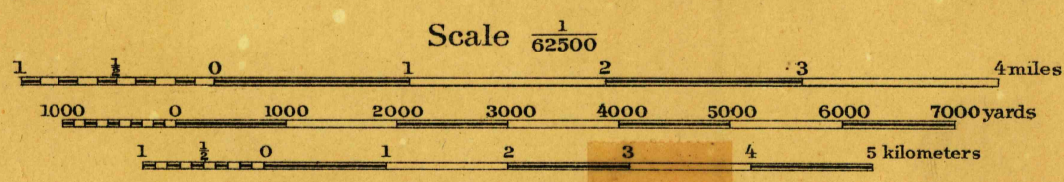




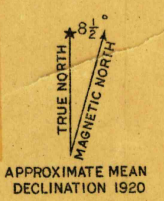
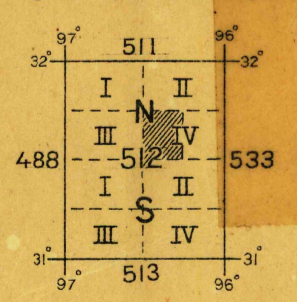
Prepared under the direction of Col. W. P. Stokely,  
Corps of Engineers, U.S.A. Department Engineer,  
Southern Department, 1919.  
Compiled from Railroad Alignments and Profiles  
and County Road Maps.  
Completed under the direction of Major W. G. Caples,  
Corps of Engineers, July and August, 1919.



Contour Interval 20 feet  
Datum is mean sea level

NOTE: OFFICERS USING THIS MAP WILL MARK HEREON CORRECTIONS AND ADDITIONS WHICH COME  
TO THEIR ATTENTION AND MAIL DIRECT TO "THE CHIEF OF ENGINEERS, WASHINGTON, D.C."

Engineer Reproduction Plant, U. S. Army, Washington Barracks, D.C.



U.S. Board on  
Geographical Names