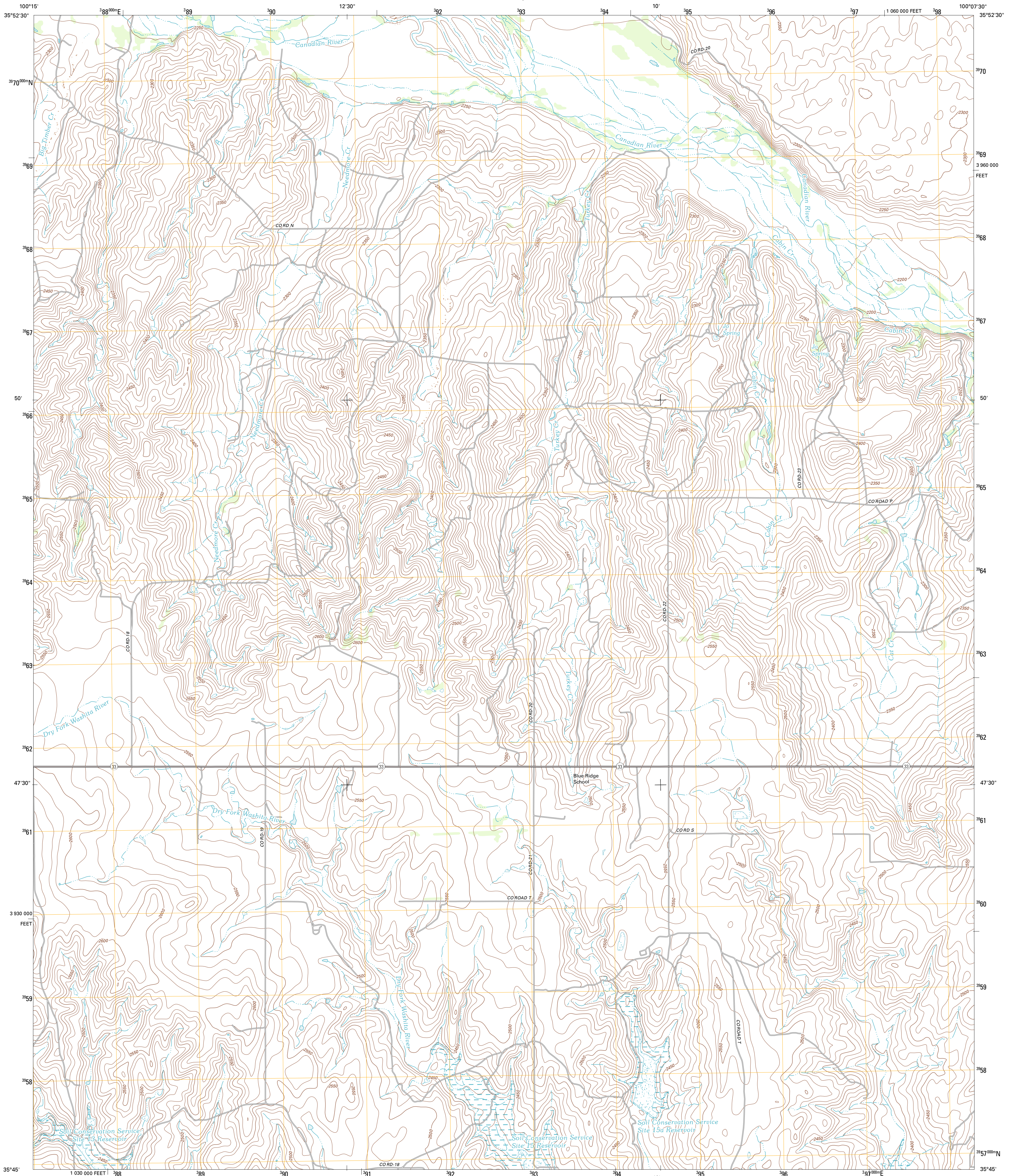




U.S. DEPARTMENT OF THE INTERIOR  
U. S. GEOLOGICAL SURVEY

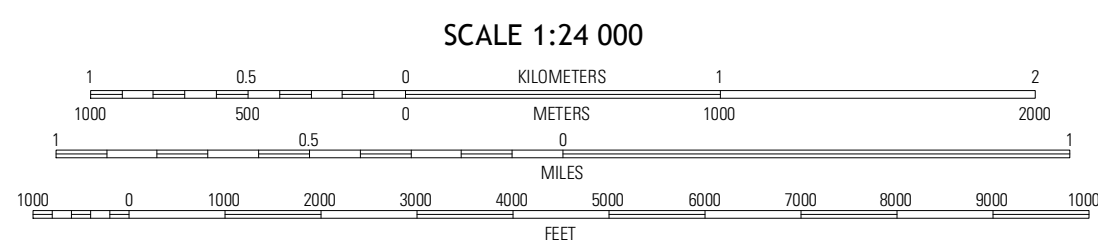
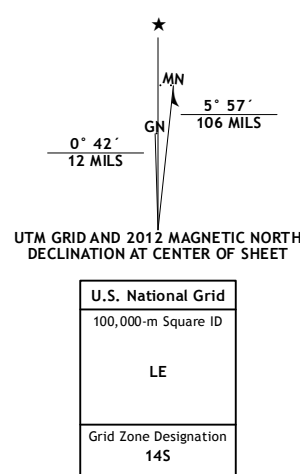


BLUE RIDGE SCHOOL QUADRANGLE  
TEXAS-HEMPHILL CO.  
7.5-MINUTE SERIES



Produced by the United States Geological Survey  
North American Datum of 1983 (NAD83)  
World Geodetic System of 1984 (WGS84). Projection and  
1000-meter grid: Universal Transverse Mercator, Zone 14S  
10 000-foot ticks: Texas Coordinate System of 1983 (north zone)

Imagery.....NAIP, August 2010  
Roads.....©2006-2012 TomTom  
Names.....GNS, 2012  
Hydrography.....National Hydrography Dataset, 2010  
Contours.....National Elevation Dataset, 2002  
Boundaries.....Census, IBWC, IBC, USGS, 1972 - 2012

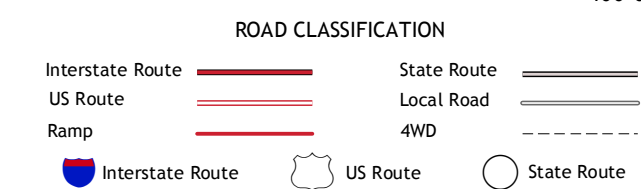


CONTOUR INTERVAL 10 FEET  
NORTH AMERICAN VERTICAL DATUM OF 1988  
This map was produced to conform with the  
National Geospatial Program US Topo Product Standard, 2011.  
A metadata file associated with this product is draft version 0.6.7



QUADRANGLE LOCATION

Canadian East	Lake Marvin	Dreyfoos
Canadian SE	Blue Ridge School	Gem
Dads Creek	Lake June	Hackberry Creek



ADJOINING 7.5 QUADRANGLES

BLUE RIDGE SCHOOL, TX  
2012