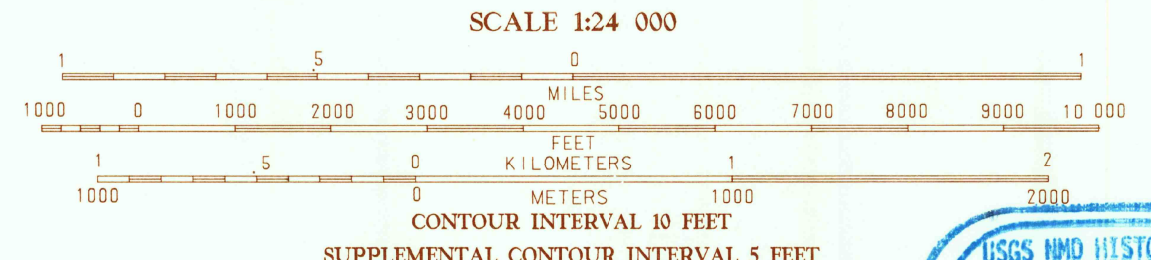


PRODUCED BY THE UNITED STATES GEOLOGICAL SURVEY
CONTROL BY THE UNITED STATES GEOLOGICAL SURVEY
COMPILED FROM AERIAL PHOTOGRAPHS TAKEN 1976
FIELD CHECKED 1978 MAP EDITED 1984
PROJECTION LAMBERT CONFORMAL CONIC
GRID METERS UNIVERSAL TRANSVERSE MERCATOR ZONE 14
UTM GRID STATE GRID TICKS TEXAS, NORTH CENTRAL ZONE
1000-FOOT STATE GRID TICKS 8" EAST
1984 MAGNETIC NORTH DECLINATION 8° EAST
VERTICAL DATUM NATIONAL GEODETIC VERTICAL DATUM OF 1929
HORIZONTAL DATUM 1927 NORTH AMERICAN DATUM
The difference between 1927 North American Datum and North
American Datum of 1983 (NAD 83) for 7.5 minute intersections
is given in USGS Bulletin 1875. The NAD 83 is shown by
dashed corner ticks
There may be private inholdings within the boundaries of the
National or State reservations shown on this map
All marginal data and lettering generated and positioned by
automated type placement procedures

PROVISIONAL MAP
Produced from original
manuscript drawings. Infor-
mation shown as of date of
field check. 3



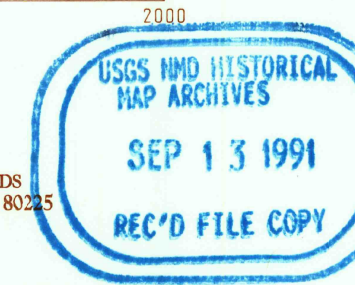
ROAD LEGEND

Improved Road	Unimproved Road	Trail
Interstate Route	U.S. Route	State Route

QUADRANGLE LOCATION

1	2	3	1 Luskon Wan
4	5	6	2 Luskon Wan
6	7	8	3 Collins Creek SW
			4 Nigam
			5 Annap
			6 Hamby
			7 Hamby
			8 Luper Creek

ADJOINING 7.5' QUADRANGLE NAMES
3299-314



THIS MAP COMPLIES WITH NATIONAL MAP ACCURACY STANDARDS
FOR SALE BY U.S. GEOLOGICAL SURVEY, DENVER, COLORADO 80225
OR RESTON, VIRGINIA 22092

SMOKY DRAW, TEXAS
PROVISIONAL EDITION 1984

32999-F5-TF-024