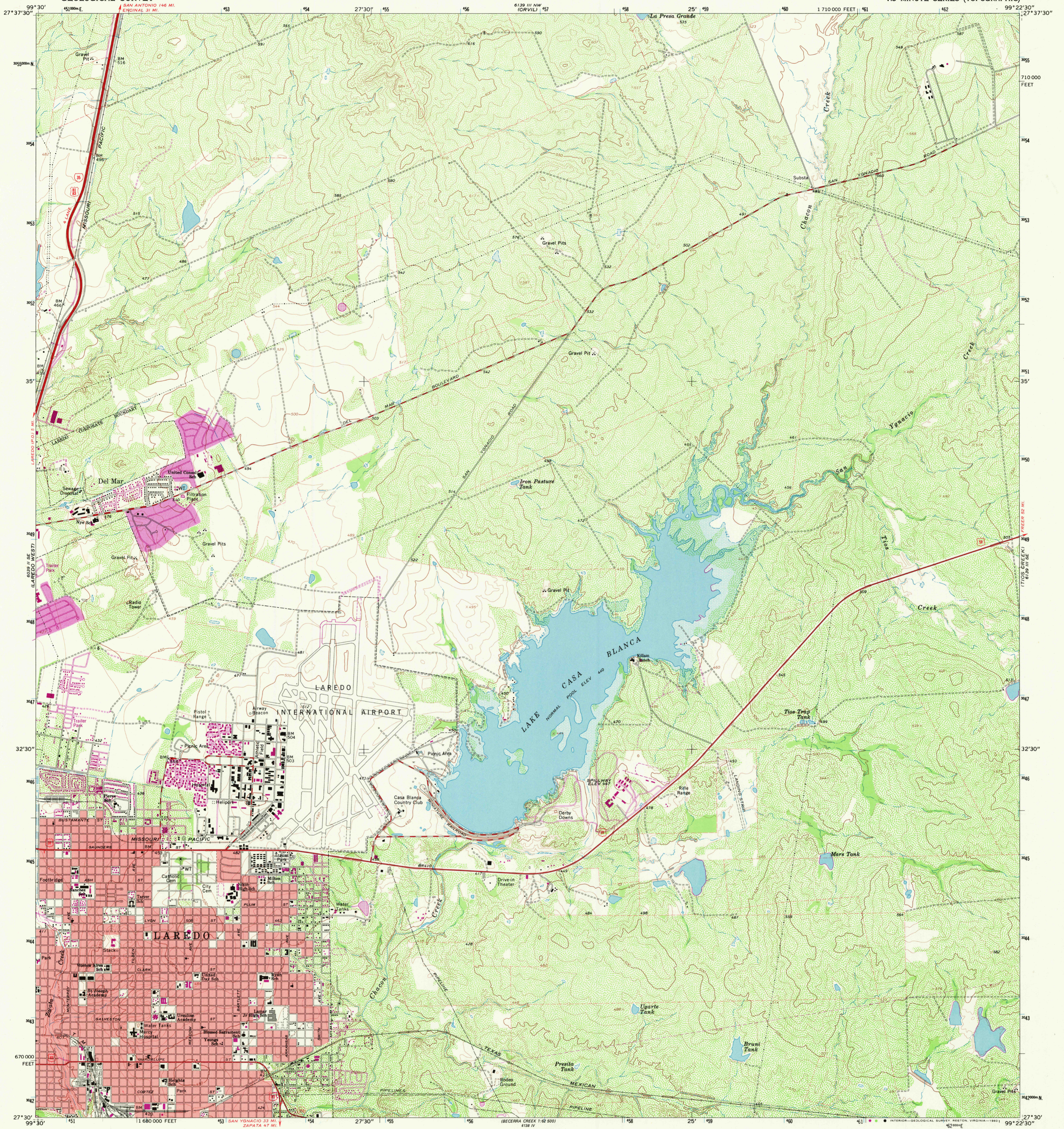
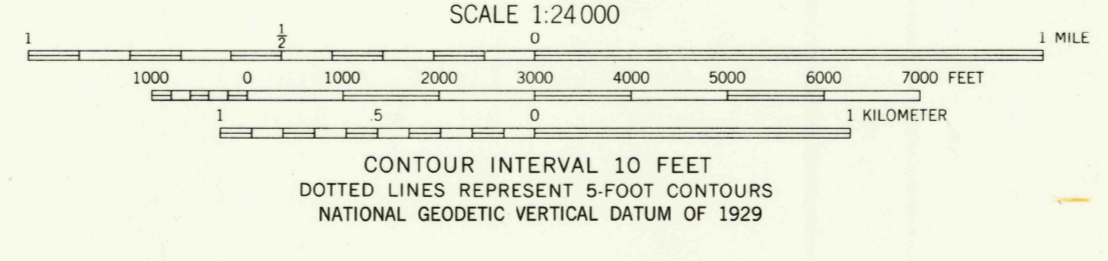
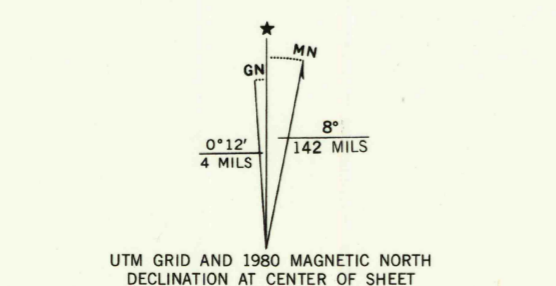


UNITED STATES
DEPARTMENT OF THE INTERIOR
GEOLOGICAL SURVEY

LAREDO EAST QUADRANGLE
TEXAS—WEBB CO.
7.5 MINUTE SERIES (TOPOGRAPHIC)



Mapped, edited, and published by the Geological Survey
Control by USGS and NOS/NOAA
Topography by photogrammetric methods from aerial
photographs taken 1964. Field checked 1965
Polyconic projection. 10,000-foot grid based on
Texas coordinate system, south zone
1000-meter Universal Transverse Mercator grid ticks,
zone 14, shown in blue. 1927 North American Datum
To place on the predicted North American Datum 1983
move the projection lines 27 meters south and
32 meters east as shown by dashed corner ticks
Red tint indicates area in which only landmark buildings are shown
Fine red dashed lines indicate selected fence lines
Areas covered by dashed light-blue pattern are subject
to controlled inundation



ROAD CLASSIFICATION

Heavy-duty	Light-duty
Medium-duty	Unimproved dirt
Interstate Route	U.S. Route
	State Route

USGS
Historical
Topographic
Division

DEC 1 1980

LAREDO EAST, TEX.
N2730—W9922.5/7.5
1965
PHOTOREVISED 1980
DMAI 6139 III SW—SERIES V882

2050

THIS MAP COMPLIES WITH NATIONAL MAP ACCURACY STANDARDS
FOR SALE BY U.S. GEOLOGICAL SURVEY, DENVER, COLORADO 80225, OR RESTON, VIRGINIA 22092
A FOLDER DESCRIBING TOPOGRAPHIC MAPS AND SYMBOLS IS AVAILABLE ON REQUEST

2799-422