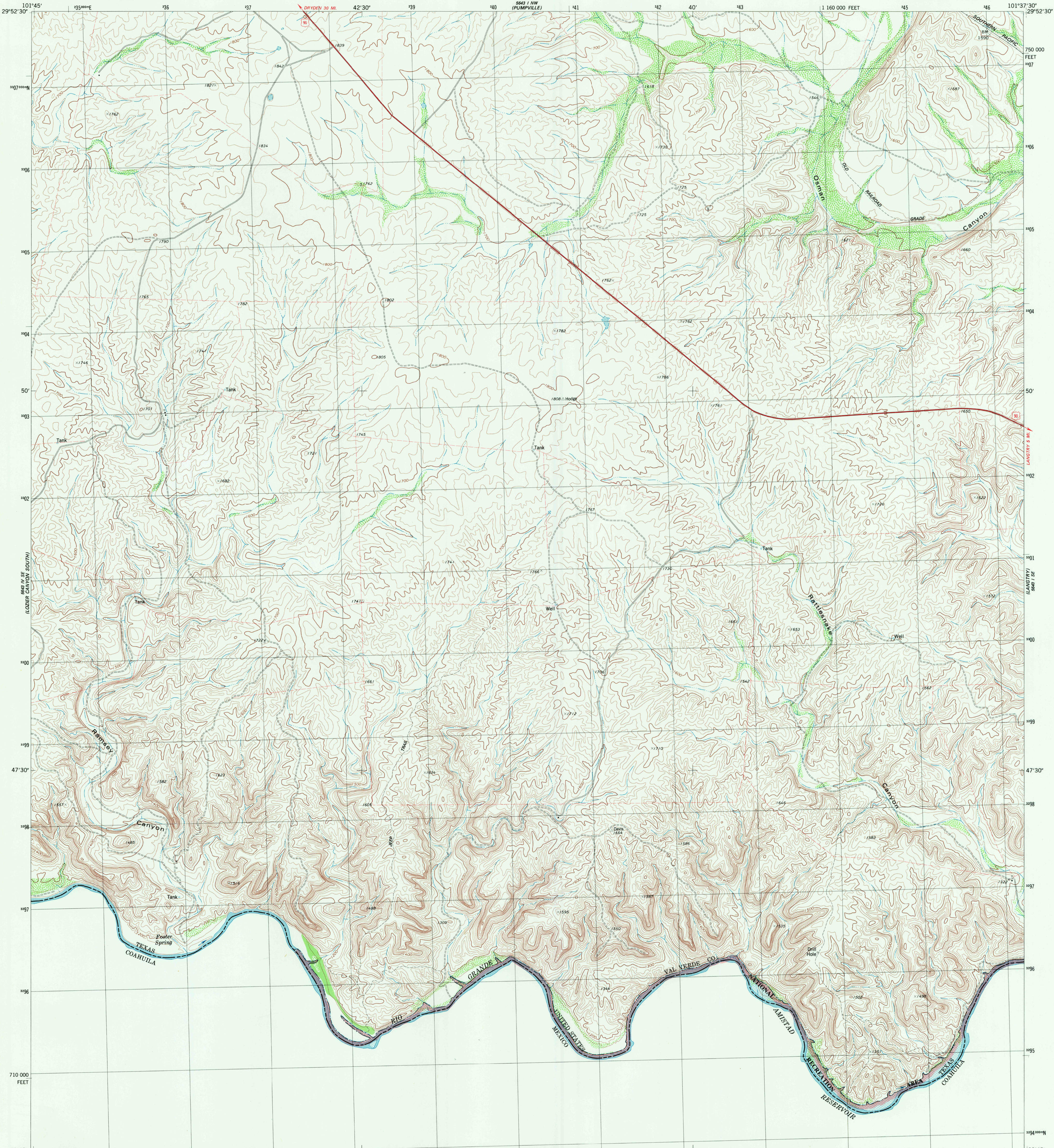
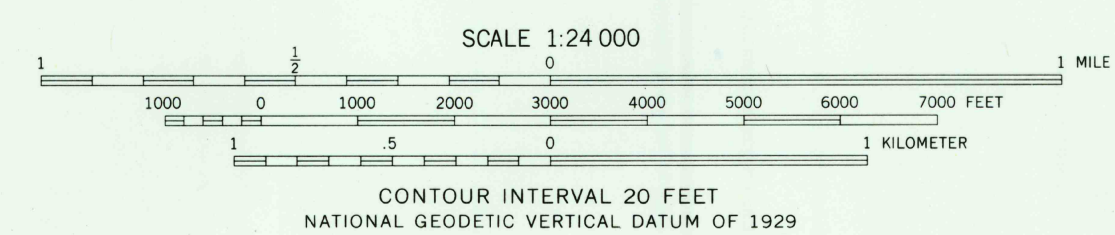
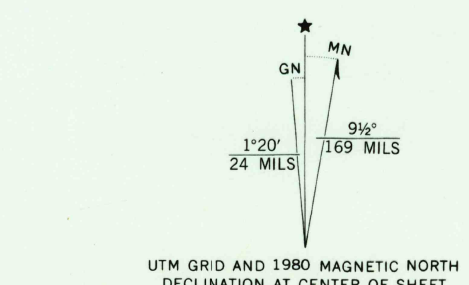


UNITED STATES
DEPARTMENT OF THE INTERIOR
GEOLOGICAL SURVEY

RAMSEY CANYON QUADRANGLE
TEXAS-VAL VERDE CO.
7.5 MINUTE SERIES (TOPOGRAPHIC)
SW/4 LANOTRY 15' QUADRANGLE



Mapped, edited, and published by the Geological Survey
Control by USGS, NOS/NOAA and International Boundary
and Water Commission
Topography by photogrammetric methods from aerial photographs
taken 1974. Field checked 1976. Map edited 1980
Projection and 10,000-foot grid ticks: Texas
coordinate system, south central zone (Lambert conformal conic)
1000-meter Universal Transverse Mercator grid, zone 14
1927 North American datum
To place on the predicted North American Datum 1983
move the projection lines 18 meters south and
38 meters east as shown by dashed corner ticks
Areas covered by light-blue pattern are subject
to controlled inundation to 1144 feet
Fine red dashed lines indicate selected fence lines



THIS MAP COMPLIES WITH NATIONAL MAP ACCURACY STANDARDS
FOR SALE BY U. S. GEOLOGICAL SURVEY, DENVER, COLORADO 80225, OR RESTON, VIRGINIA 22092
A FOLDER DESCRIBING TOPOGRAPHIC MAPS AND SYMBOLS IS AVAILABLE ON REQUEST



2901-342

ROAD CLASSIFICATION

| | |
|---------------------------------|---|
| Primary highway, hard surface | Light-duty road, hard or improved surface |
| Secondary highway, hard surface | Unimproved road |
| Interstate Route | U. S. Route |
| | State Route |

USGS
Historical File
Topographic Division

RAMSEY CANYON, TEX.
SW/4 LANOTRY 15' QUADRANGLE
N2945-W10137.5/7.5

1980
DMA 5643 1 SW-SERIES V882

OCT 29 1980

1730