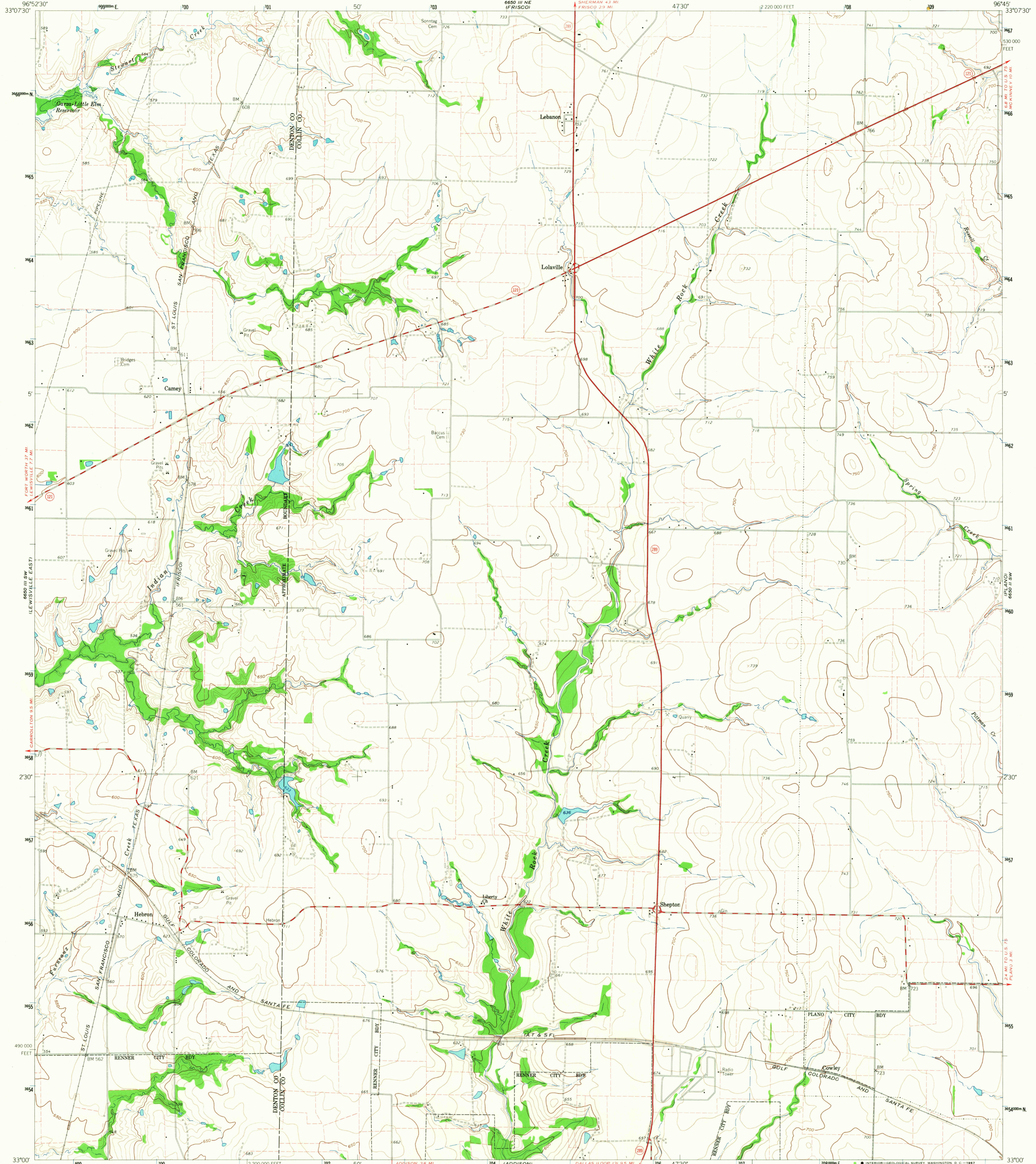


6660 III NW
LITTLE E.M.W.

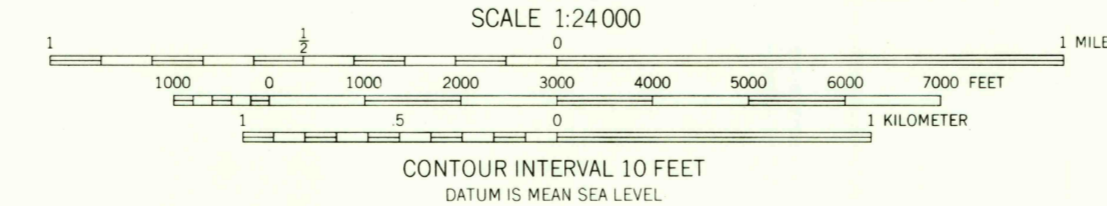
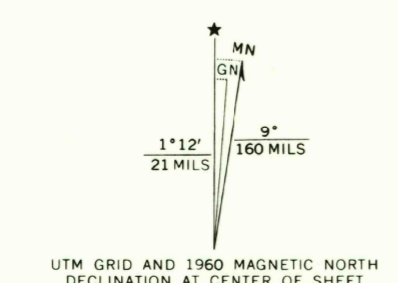
UNITED STATES
DEPARTMENT OF THE INTERIOR
GEOLOGICAL SURVEY

HEBRON QUADRANGLE
TEXAS
7.5 MINUTE SERIES (TOPOGRAPHIC)
SE/4 FRISCO 15' QUADRANGLE

6660 I NW
MC PINNEY WEST I



Mapped, edited, and published by the Geological Survey
Control by USGS and USCGS
Topography from aerial photographs by photogrammetric methods
Aerial photographs taken 1957 Field check 1960
Polyconic projection, 1927 North American datum
10,000-foot grid based on Texas coordinate system,
north central zone
1000 meter Universal Transverse Mercator grid ticks,
zone 14, shown in blue
Fine red dashed lines indicate selected fence and field lines
where generally visible on aerial photographs
This information is uncheckered
Area covered by dashed light-blue pattern
is subject to controlled inundation to 532 feet



USGS
Historical Files
Topographic Division

ROAD CLASSIFICATION	
Heavy-duty	Light-duty
Medium-duty	Unimproved dirt
State Route	



THIS MAP COMPLIES WITH NATIONAL MAP ACCURACY STANDARDS
FOR SALE BY U. S. GEOLOGICAL SURVEY, DENVER, COLORADO 80225, OR WASHINGTON, D. C. 20242
A FOLDER DESCRIBING TOPOGRAPHIC MAPS AND SYMBOLS IS AVAILABLE ON REQUEST

U.S.G.S.
FILE COPY
TOPOGRAPHIC DIVISION

HEBRON, TEX.
SE/4 FRISCO 15' QUADRANGLE
N3300-W9645/7.5
1960
AMS 6650 III SE-SERIES V882

4190
OCT 4 1967