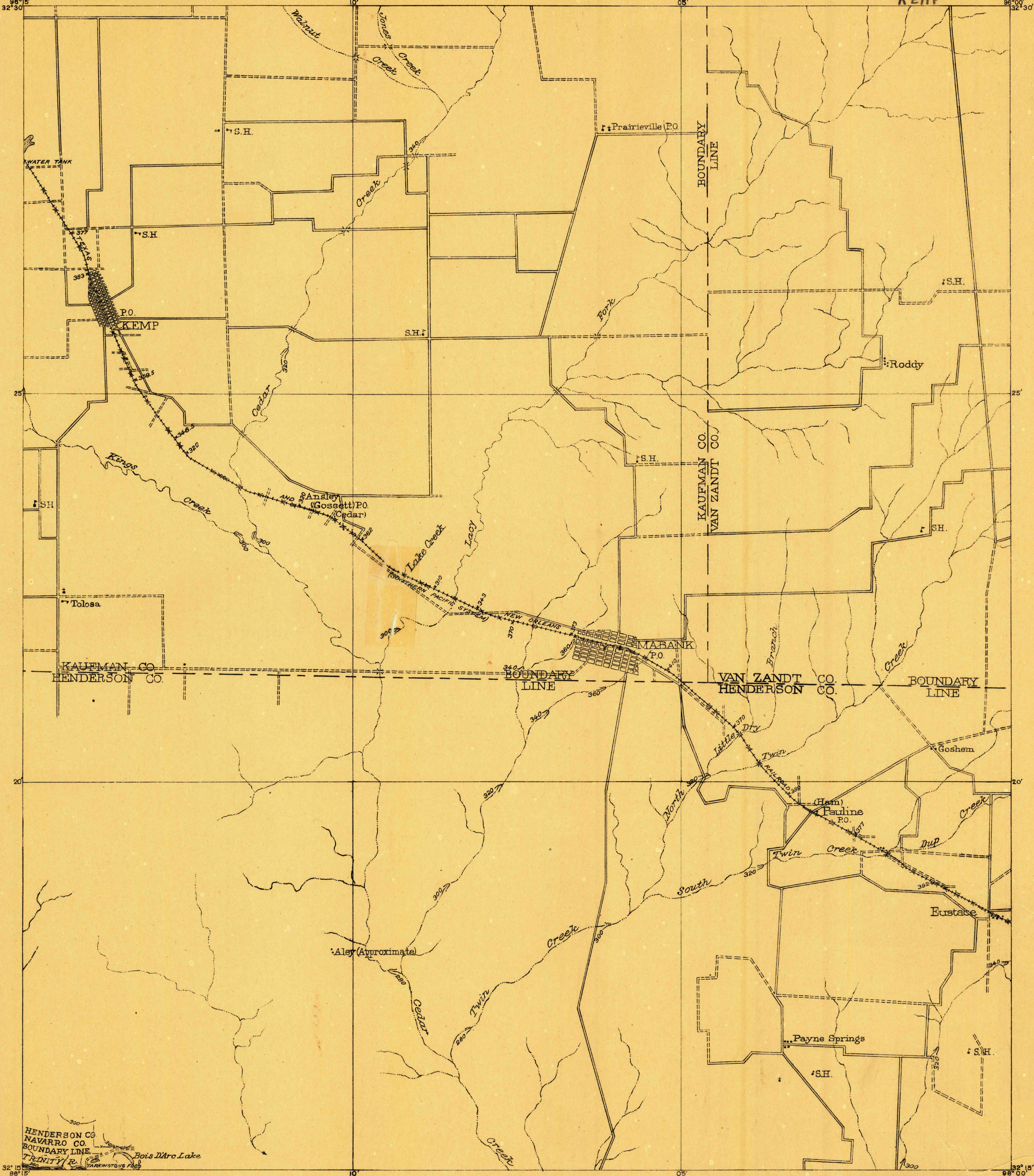


(511-S-II-E/2)

ADVANCE SHEET 511-S-II-E/2

CORPS OF ENGINEERS, U. S. ARMY
PROGRESSIVE MILITARY MAP

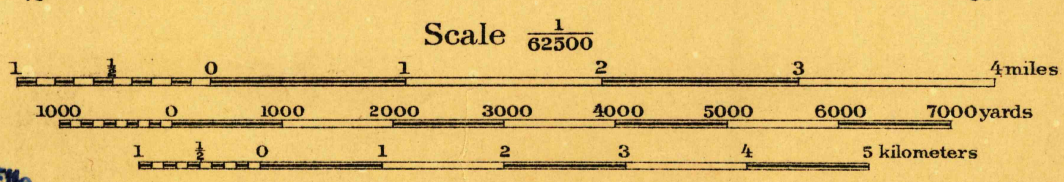
TEXAS
KEMP



HENDERSON CO.
NAVARRO CO.
BOUNDARY LINE
TRINITY R.
Bois D'Arc Lake
MAYNARD'S 1882

Prepared under the direction of Col. W. P. Stoker,
Corps of Engineers, U.S.A., Department Engineer,
Southern Department, 1919.
Compiled from Railroad Alignments and Profiles,
County Road Maps, and Trinity River Survey.
U. S. E. D. 1912-1915.
Completed under the direction of Major W. G. Caples,
Corps of Engineers, July and August, 1919.

USGS
Historical File
Topographic Division

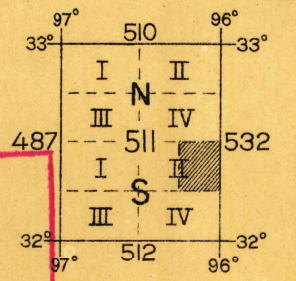


Contour Interval 90 feet
Datum is mean sea level

NOTE: OFFICERS USING THIS MAP WILL MARK HEREON CORRECTIONS AND ADDITIONS WHICH COME TO THEIR ATTENTION AND MAIL DIRECT TO THE CHIEF OF ENGINEERS, WASHINGTON, D.C.

U. S. Dept. of Interior
Div. of Geography
Historical File
Topographic Division

Engineer Reproduction Plant, U. S. Army, Washington Barracks, D.C.
1920



TRUE NORTH
MAGNETIC NORTH
APPROXIMATE MEAN DECLINATION 1920

USGS Library
Reston, VA.
Topo Archive