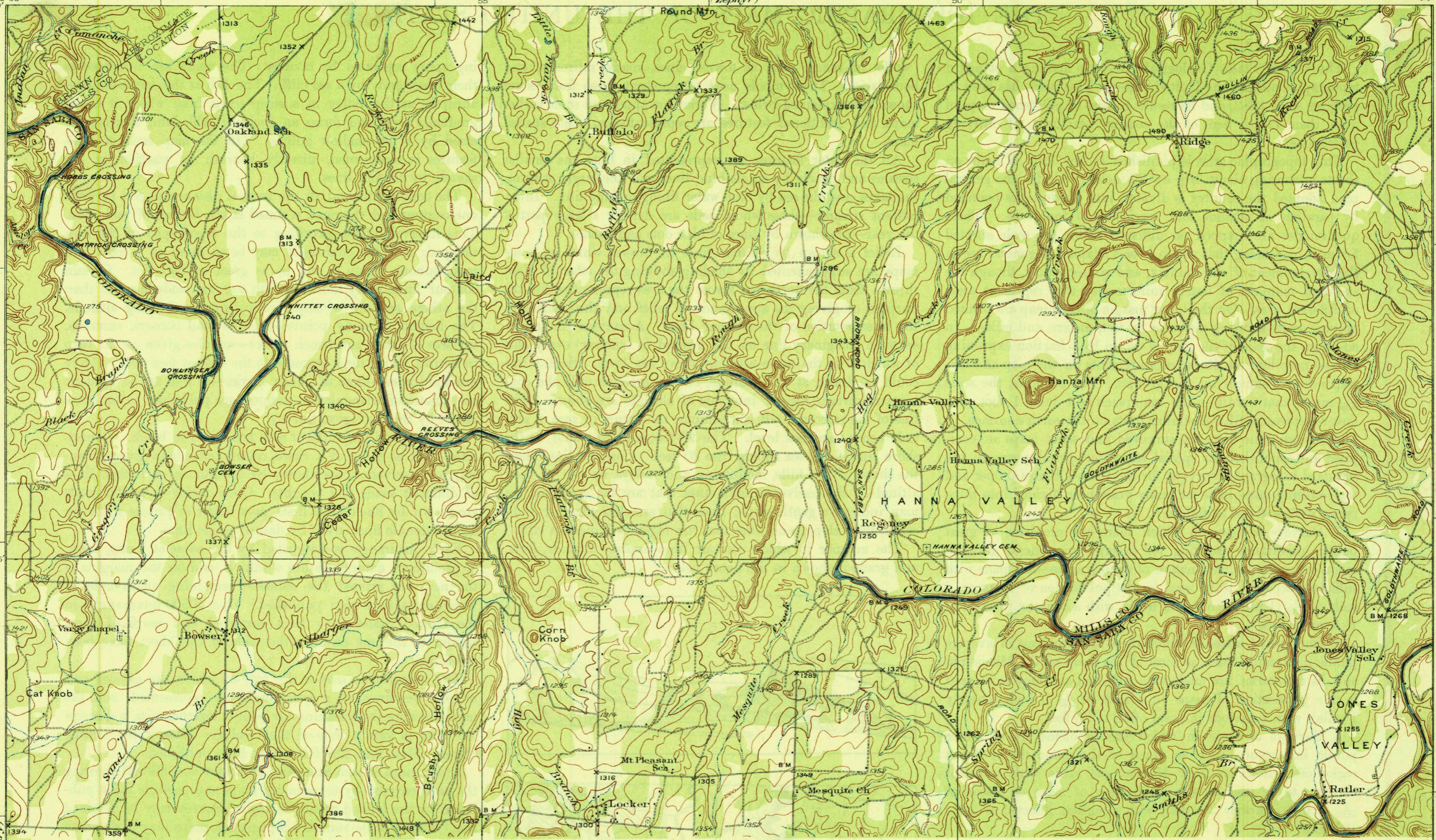


U. S. G. P.
FILE COPY
Inspection and Editing.

DEPARTMENT OF THE INTERIOR
U.S. GEOLOGICAL SURVEY

STATE OF TEXAS
BOARD OF WATER ENGINEERS
JOHN A. NORRIS, CHAIRMAN
C. S. CLARK, A. H. DUNLAP
(Zephyr)

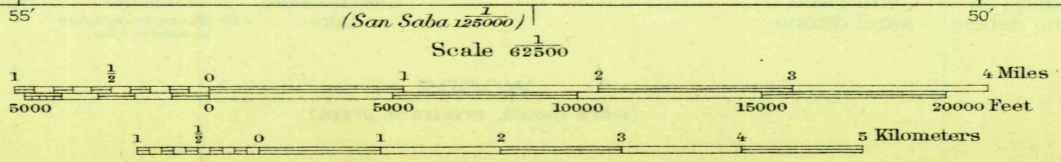
TEXAS
RICHLAND SPRINGS QUADRANGLE



THIS AREA IS SHOWN ON THE MAP OF SAN SABA
QUADRANGLE, SURVEYED IN 1885, SCALE 1:125,000

U. S. G. P.
FILE COPY
Inspection and Editing.

Topography by W.F. Chenault, G.S. Druhot,
and A.W. Plushnick
Culture and drainage in part compiled from
aerial photographs taken by Air Corps, U.S. Army
Control by U.S. Geological Survey
Surveyed in 1925



Contour interval 20 feet
Datum is mean sea level

Polyconic projection, North American datum
5000 yard grid based upon U.S. zone system, D

DEC 31 1930 (1960)

RICHLAND SPRINGS, TEX.
Edition of 1930

1960