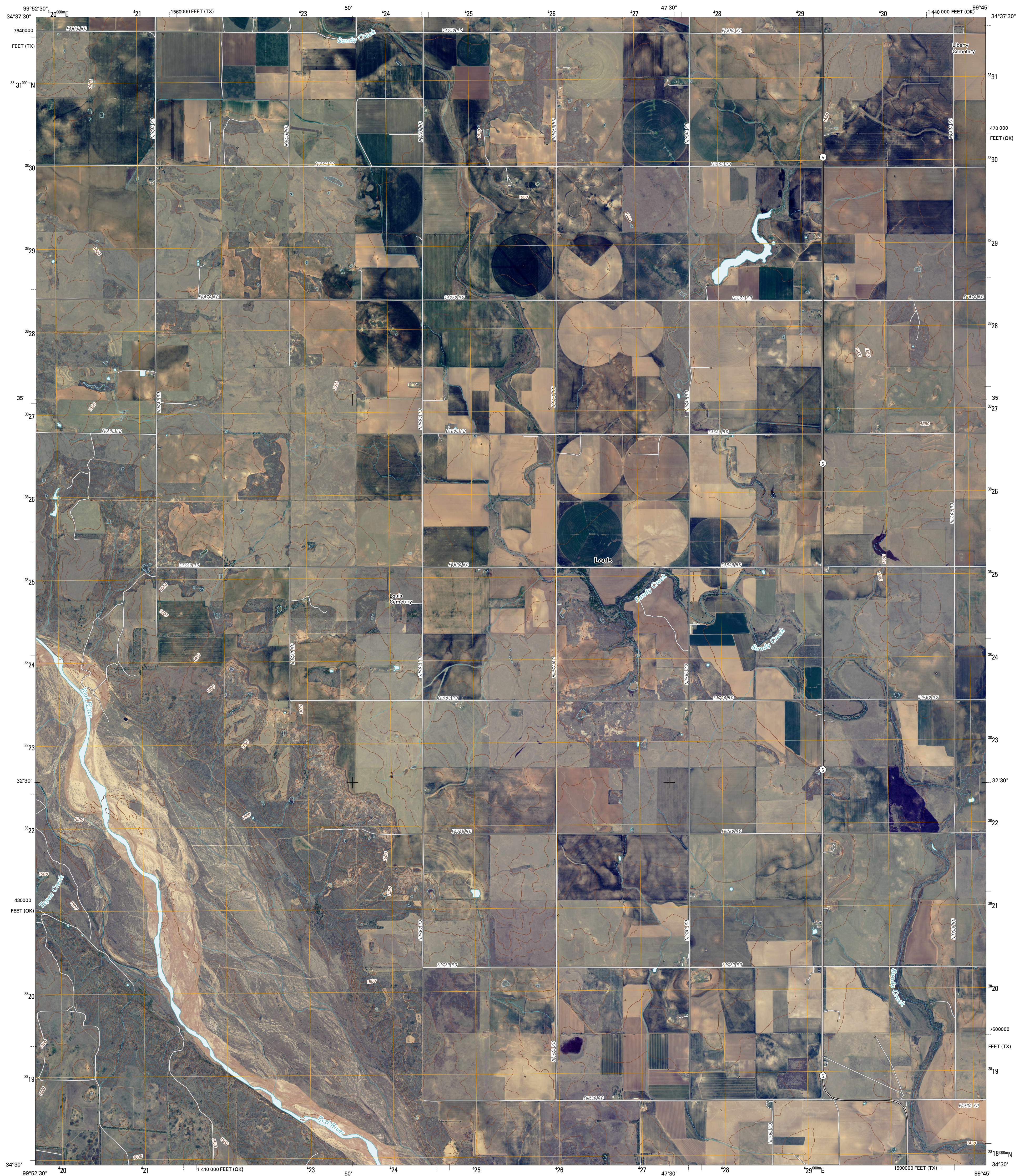




U.S. DEPARTMENT OF THE INTERIOR  
U. S. GEOLOGICAL SURVEY

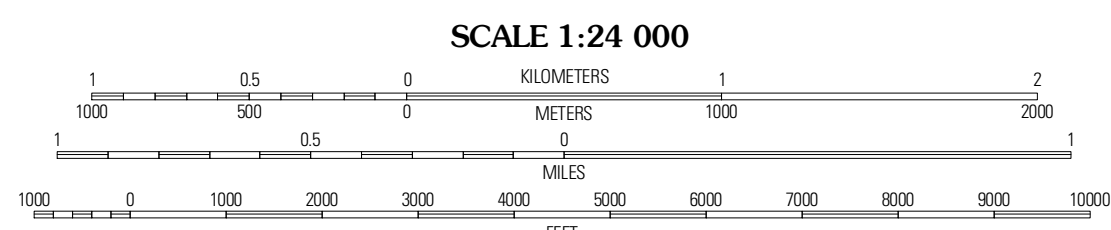
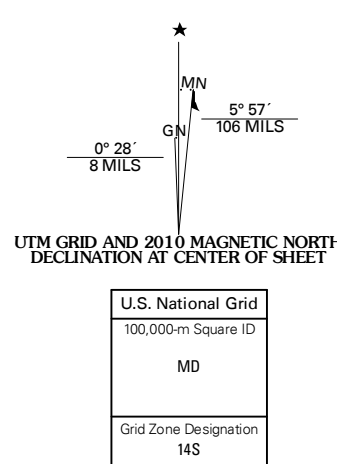


LOUIS QUADRANGLE  
OKLAHOMA-Texas  
7.5-MINUTE SERIES

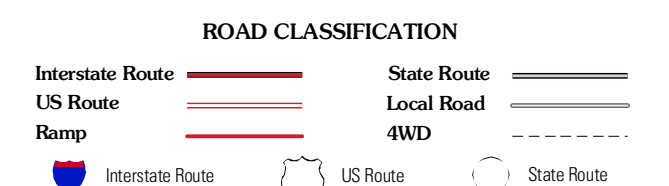
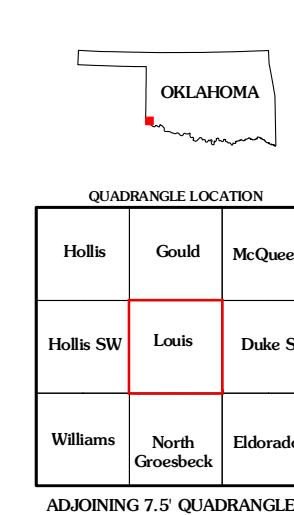


Produced by the United States Geological Survey  
North American Datum of 1983 (NAD83)  
World Geodetic System of 1984 (WGS84). Projection and  
1 000-meter grid: Universal Transverse Mercator, Zone 14S  
10 000-foot ticks: Oklahoma Coordinate System of 1983  
(south zone) and Texas Coordinate System of 1983  
(north central zone)

Imagery: NADP, April 2008 - August 2008  
Roads: US Census Bureau TIGER data  
with limited USGS updates, 2004 - 2008  
Names: GNIS, 2008  
Hydrography: National Hydrography Dataset, 2008  
Contours: National Elevation Dataset, 2000



CONTOUR INTERVAL 10 FEET  
NORTH AMERICAN VERTICAL DATUM OF 1988  
This map was produced to conform with version 0.5.10 of the  
draft USGS Standards for 7.5-Minute Quadrangle Maps.  
A metadata file associated with this product is also draft version 0.5.10



Hollis	Gould	McQueen
Holla SW	Louis	Duke SW
Williams	North Grosbeck	Eldorado

ADJOINING 7.5 QUADRANGLES

LOUIS, OK-TX  
2010