



# **Municipal Solid Waste in Texas: *A Year in Review***

*FY 2011 Data Summary and Analysis*







# Municipal Solid Waste in Texas: A Year in Review

FY 2011 Data Summary and Analysis

Prepared by  
Waste Permits Division

AS-187/12  
Revised November 2012





**Bryan W. Shaw, Ph.D.,** *Chairman*  
**Carlos Rubinstein,** *Commissioner*  
**Toby Baker,** *Commissioner*

**Zak Covar,** *Executive Director*

*We authorize you to use or reproduce any original material contained in this publication—that is, any material we did not obtain from other sources. Please acknowledge the TCEQ as your source.*

*Copies of this publication are available for public use through the Texas State Library, other state depository libraries, and the TCEQ Library, in compliance with state depository law. For more information on TCEQ publications call 512-239-0028 or visit our website at:*

***[tceq.texas.gov/publications](http://tceq.texas.gov/publications)***

Published and distributed  
by the  
Texas Commission on Environmental Quality  
PO Box 13087  
Austin TX 78711-3087

The TCEQ is an equal opportunity employer. The agency does not allow discrimination on the basis of race, color, religion, national origin, sex, disability, age, sexual orientation or veteran status. In compliance with the Americans with Disabilities Act, this document may be requested in alternate formats by contacting the TCEQ at 512-239-0028, fax 512-239-4488, or 1-800-RELAY-TX (TDD), or by writing PO Box 13087, Austin, TX 78711-3087.

How is our customer service? [tceq.texas.gov/customersurvey](http://tceq.texas.gov/customersurvey)



# Table of Contents

About the Municipal Solid Waste Reporting Program.....	1
Waste Managed by MSW Facilities .....	1
Who Files Reports.....	2
Reporting Period.....	2
Data Used.....	2
Landfills Reporting.....	5
Classification of MSW Facilities .....	7
Landfills .....	7
Processing Facilities.....	7
Other Information .....	8
Waste Information.....	11
Capacity Information.....	13
Effect of Recycling on MSW Disposal.....	17
Trend Analyses.....	19
Historical Data for MSW Landfills in Texas .....	23
Facility Data for MSW Landfills .....	25
Facility Data for MSW Processing Facilities.....	35
Facility Data for MSW Facilities Recovering Landfill Gas for Beneficial Use.....	45
MSW Waste and Material Type Descriptions.....	47

## Tables

Table 1. Landfill Activity Status for 2011 .....	5
Table 2. Breakdown of Processing Facilities for 2011.....	8
Table 3. Breakdown of Waste Types Landfilled in Texas for 2011 .....	12
Table 4. Disposal Amounts and Remaining Capacity by Facility Type .....	14
Table 5. Analysis of MSW Landfill Disposal by Texas COGs for 2011.....	15
Table 6. Breakdown of Diverted Materials for 2011 .....	17
Table 7. Number of Texas Counties Served by MSW Landfills for 2011 .....	20
Table 8. Number of Active Landfills by County for 2011.....	21



## Figures

Figure 1. Breakdown of Waste Types Landfilled in Texas for 2011 .....	11
Figure 2. Texas Total and Per Capita Landfill Disposal .....	13
Figure 3. Texas Councils of Governments Map .....	16
Figure 4. Number of Active Landfills and Remaining Capacity .....	19



# About the Municipal Solid Waste Reporting Program

*Municipal Solid Waste in Texas: A Year in Review* is submitted by the Municipal Solid Waste (MSW) Permits Section, Waste Permits Division, for publication after the end of each fiscal year. The primary purpose of the summary is to provide data on the amount of waste disposed and processed at MSW facilities during that fiscal year. The report also includes an estimate of the remaining disposal capacity as of the end of that fiscal year.

## Waste Managed by MSW Facilities

The definition of MSW is found in Title 30 of the Texas Administrative Code (30 TAC), Chapter 330 (Municipal Solid Waste), Subchapter A (General Information). MSW is defined as “solid waste, resulting from or incidental to municipal, community, commercial, institutional, and recreational activities, including garbage, rubbish, ashes, street cleanings, dead animals, abandoned automobiles, and all other solid waste other than industrial solid waste.” Industrial solid waste is defined and regulated under 30 TAC Chapter 335 (Industrial Solid Waste and Municipal Hazardous Waste).

The Texas definition of MSW considers the source, rather than the constituents or properties of the waste. Distributors, retailers, repair services, and the general public are municipal generators; manufacturers are industrial solid waste generators. For example, a power distribution provider is an MSW generator, where as an electric power generation plant is an industrial waste generator.

It is worth noting that the Texas definition of MSW is more encompassing than that of the United States Environmental Protection Agency (USEPA) and several other states. While the USEPA definition does not include construction or demolition (C&D) waste and municipal sludge, the Texas definition does. Based on the Texas definition, the per capita MSW disposal and generation rates for Texas may appear to be higher than those of other states.

Texas also defines industrial solid wastes as being separate and distinct from MSW. In Texas, industrial solid waste may also be defined as hazardous or non-hazardous, with the non-hazardous industrial solid waste further defined by classes.

- Class 1: industrial non-hazardous waste that, based on its constituents and properties, may pose a substantial danger to human health or the environment if it’s not properly managed. There are special handling requirements for Class 1 wastes at MSW landfills. Solidified industrial sludge containing metals or organics may be a Class 1 waste.

- Class 2: industrial solid waste that cannot be described as hazardous, Class 1 non-hazardous, or Class 3. Activated sludge from industrial biological wastewater treatment and trash from plant offices are typically Class 2 wastes.
- Class 3: inert and essentially insoluble industrial solid wastes that do not readily decompose. Examples include bricks or concrete from an industrial facility.

It should be noted that waste classified as hazardous by federal rules cannot become non-hazardous through dilution. The Texas classification of Class 1 non-hazardous industrial waste is based on the leachable concentrations of constituents of concern found in the waste.

Under certain circumstances, non-hazardous industrial solid waste may be accepted at MSW landfills. Most MSW facilities may accept Class 2 and Class 3 wastes. Only facilities with dedicated Class 1 cells, which have more protective design requirements, may accept Class 1 nonhazardous waste.

### **Who Files Reports**

This summary includes data submitted to the TCEQ from both permitted and registered MSW facilities. The data is obtained by the agency under the authority of 30 TAC 330, Subchapter P (Fees and Reporting), which requires all registered or permitted facility operators to report the types and amounts of waste disposed or processed at the disposal facility or processing location.

### **Reporting Period**

Reports from MSW facilities are based on the state's fiscal year, which runs from September 1 through August 31. All references to 2011 in this annual summary are related to fiscal year 2011 (September 1, 2010, through August 31, 2011).

### **Data Used**

The data in this summary are condensed from annual reports submitted by 257 landfills (193 active and 64 inactive or in post-closure care) and 222 (175 active and 47 inactive) processing facilities (see Tables 1 and 2). The MSW Permits Section staff reviewed the data and verified and/or reconciled

discrepancies with facility representatives, quarterly report data, and the section's records (MSW Records). Facility reports include operational information (e.g., which counties the facility serves), administrative information (e.g., who owns or operates the facility), and facility activities (e.g., amounts and types of waste accepted or processed at the facility).

Texas statute allows an open but inactive landfill to reactivate and accept waste under certain circumstances. All open facilities are held to the requirements of their permit, regardless of their operational state.

In accordance with 30 TAC Section 39.510, if a permitted MSW facility has not begun accepting waste within six months of permit issuance or becomes inactive for six months, the owner or operator must post signs at the site specifying the facility's status. Additionally, if the period during which the facility does not accept waste is extended to two years from the date the permit was issued, or it has ceased accepting waste for two consecutive years, the owner or operator must indicate their intent to operate the facility in the future by notifying, in writing, the TCEQ executive director, publishing a notice in a local newspaper, and mailing a notice to landowners (within 500 feet) and local authorities. If the owner or operator does not intend to operate the facility, they should request revocation of their permit.

In accordance with 30 TAC Section 330.71 (g), if registered operators of MSW facilities do not commence physical constructions within two years of registration issuance, the TCEQ will automatically terminate their registrations.

Population data for this summary was obtained from the US Census Bureau's state population estimates<sup>i</sup> found at [www.census.gov/popest/data/counties/totals/2011/CO-EST2011-01.html](http://www.census.gov/popest/data/counties/totals/2011/CO-EST2011-01.html).

---

<sup>i</sup> Table 1. Annual Estimates of the Resident Population for Counties of Texas: April 1, 2010 to July 1, 2011 (CO-EST2011-01-48); Source: U.S. Census Bureau, Population Division; Release Date: April 2012; <http://www.census.gov/popest/data/counties/totals/2011/CO-EST2011-01.html>.





# Landfills Reporting

MSW Records indicated that for 2011 there were 305 permitted MSW landfills with a physical activity status of active, inactive, or in post-closure care. Of these, data were submitted for 257 facilities. Landfills not reporting were either inactive or in post-closure care according to MSW Records.

Disposal and capacity data were evaluated for all 193 active landfills. The breakdown of the number of facilities according to their activity status in relation to MSW Records and whether they submitted reports is summarized below in Table 1.

**Table 1. Landfill Activity Status for 2011**

<b>Activity Status</b>	<b>MSW Records</b>	<b>Reports Received</b>
Active	193	193
Inactive – yet to receive waste	12	11
Inactive – previously received waste	33	21
Post-closure care – no longer accepts waste, have installed a final cover system, and do not plan to re-open	67	32
<b>Total</b>	<b>305</b>	<b>257</b>





# Classification of MSW Facilities

## Landfills

**Type I facilities.** A Type I landfill is the standard landfill for the disposal of MSW. For 2011, 100 of the active landfills (52 percent) were Type I facilities.

**Type IV facilities.** A Type IV landfill accepts only brush, C&D waste, and other similar waste that will not putrefy. For 2011, 20 of the active landfills (10 percent) were Type IV facilities. In addition, Type IV landfills handled 8 percent of the total waste disposed and accounted for 4 percent of the total statewide remaining capacity. However, these landfills are not distributed evenly across the state; almost 75 percent are located in the greater Houston area.

**Arid exemption (AE) facilities.** Type I and Type IV landfills in relatively dry parts of the state may be permitted as arid-exempt landfills. These landfills are limited in the amount of solid waste they may accept and they are exempt from liner and groundwater monitoring requirements.<sup>ii</sup> In 2011, 73 landfills (38 percent) had an arid exemption. Arid exempt landfills accounted for 1 percent of the total waste disposed and 1 percent of the total statewide remaining capacity.

## Processing Facilities

Permitted and registered solid waste processing facilities are classified as Type V or Type IX facilities.

**Type V facilities.** Type V facilities transfer, incinerate, shred, grind, bale, compost, salvage, separate, dewater, or reclaim MSW, and/or provide other processing of MSW. They may be authorized by permit. However, some facilities qualify for authorization by registration if they meet specific requirements identified by statute and rule. An example of a facility that would qualify for a registration is a transfer station that includes a material recovery operation that recovers at least 10 percent by weight of the incoming waste stream for reuse or recycling.

**Type IX facilities.** A Type IX facility recovers energy, material, or gas for beneficial use, including landfill mining, within or adjacent to a closed landfill, an inactive portion of a landfill, or an active landfill.

MSW Records indicate that for 2011 there were 190 active processing facilities. Of these, 175 facilities reported.

---

<sup>ii</sup> Title 30, Texas Administrative Code, Chapter 330, §330.5(b).

Processing facilities are differentiated by sub-types in MSW Records. The breakdown of the number of active facilities for 2011 according to their sub-types in relation to MSW Records and whether they submitted reports is summarized below in Table 2.

**Table 2. Breakdown of Processing Facilities for 2011**

Facility Type	MSW Records for Active Facilities		Reports Received	
	Permitted	Registered	Permitted	Registered
Autoclave	3	1	3	1
Liquid Waste Processor	21	7	21	7
Medical Waste Processor	3	5	3	5
Composting	5	11	5	11
Recycling & Recovery	1	3	1	2
Liquid Transfer Station	0	9	0	4
Transfer Station	33	60	29	57
Waste Incinerator	3	0	3	0
Gas Recovery	2	23	2	21
<b>Total</b>	<b>71</b>	<b>119</b>	<b>67</b>	<b>108</b>

The total reported amount of waste processed by Type V facilities in 2011 is 7,947,039 tons. For the Type IX landfill gas recovery for beneficial use facilities, 15,197,086,699 cubic feet of gas were processed with 6,254,100,803 cubic feet distributed off-site. Power generated and used on-site was 301,548,427 kilowatt hours (kWh) while power generated and sold was 422,356,517 kWh.

## Other Information

**Use of scales.** The majority of active landfills in Texas (69 percent) used scales to measure all or some of their incoming waste. Facilities without scales (as well as many facilities with scales) reported waste disposal by volume (i.e., cubic yards), which was then converted to tons for this summary.

**Texas solid waste disposal fee.** As defined in Title 5 (Sanitation and Environmental Quality) Section 361.013(a) of the Texas Health and Safety Code:

*“...the commission shall charge a fee on all solid waste that is disposed of within this state. The fee is \$1.25 per ton received for disposal at a municipal solid waste landfill if the solid waste is measured by weight. If the solid waste is measured by volume, the fee for compacted solid waste is 40 cents per cubic yard or, for uncompacted solid waste, 25 cents per cubic yard received for disposal at a municipal solid waste landfill.”*

Landfill operators collect this disposal fee as part of the tipping fee they charge their customers. This fee is based on weight or volume, depending upon the type of waste and method of delivery to the landfill.

For 2011, 134 landfills reported collecting tipping fees by the ton of waste, and the statewide reported average rate was \$32.00 per ton. Fees for waste measured in compacted cubic yards averaged \$9.02 per cubic yard, with 47 facilities reporting. For waste measured in uncompacted cubic yards, 77 facilities reported collecting fees, and the statewide reported average rate was \$9.71 per cubic yard.



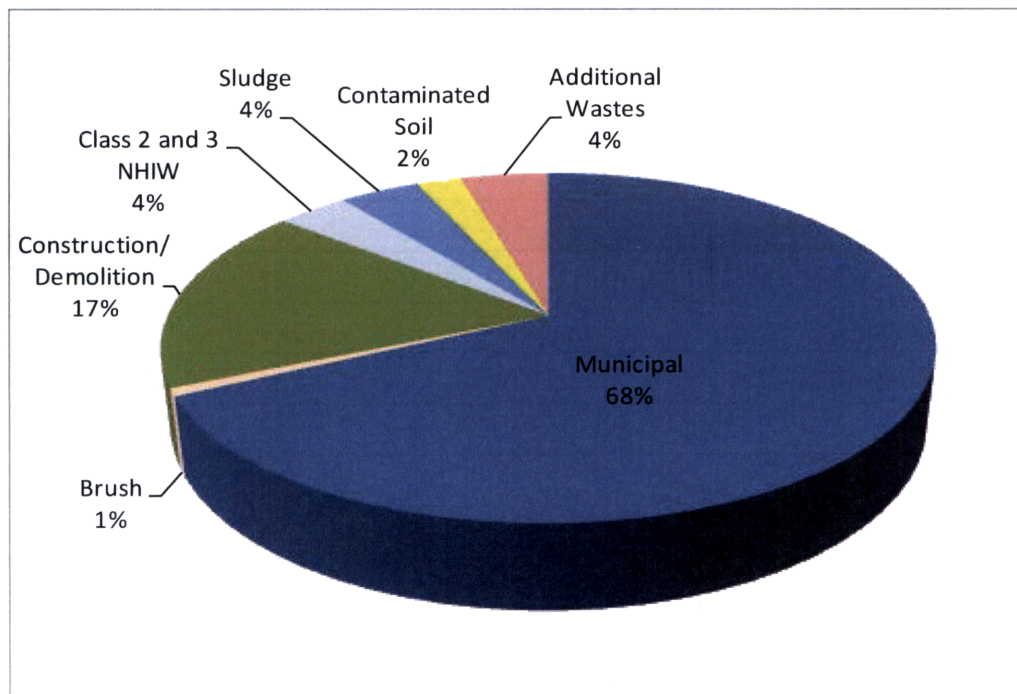


# Waste Information

**Types of wastes.** Although the majority of MSW disposed in Texas is residential and commercial waste, landfills have difficulty in estimating the amounts received for each waste type. For the purpose of this annual summary, residential and commercial waste are combined and defined as “municipal.” For 2011, municipal waste accounted for approximately 68% of the total waste disposed. At 17 %, construction and demolition waste was the second largest waste type disposed in the state. Waste type considered as “Additional Wastes” includes, but is not limited to: tires, medical waste, dead animals, litter, grease trap waste, and grit trap waste.

Figure 1 and Table 3 provide a breakdown for the estimated amounts of various waste streams that disposal facilities accepted in 2011.

**Figure 1. Breakdown of Waste Types Landfilled in Texas for 2011**



Note: Class 1 NHIW waste is included in “Contaminated Soil” and “Additional Wastes” categories.

**Out- of-State Waste.** For 2011, three landfills reported receiving MSW from Mexico for a total of 1,569 tons. In addition, seven landfills reported receiving MSW from Arkansas, Louisiana, New Mexico, and Oklahoma for a total of 122,365 tons. There are no requirements for reporting the amount of MSW that leaves the state.

**Table 3. Breakdown of Waste Types Landfilled in Texas for 2011**

Waste Type	Number of Landfills Accepting Waste Type	Tons Disposed	Percent of Total Tons Disposed
Municipal	150	19,551,561	67.85
Brush	54	205,133	0.71
Construction/Demolition	150	4,972,998	17.26
Litter	14	4,685	0.02
Class 1 NHIW <sup>1</sup>	14	297,591	1.03
Classes 2 and 3 NHIW <sup>1</sup>	51	1,026,162	3.56
Incinerator ash	9	2,823	0.01
Medical waste	16	31,310	0.11
CESQG <sup>2</sup>	1	13,073	0.05
RACM <sup>3</sup>	35	33,981	0.12
Non-RACM <sup>3</sup>	46	88,043	0.31
Dead animals	83	15,732	0.05
Sludge	90	1,158,927	4.02
Grease trap waste	13	5,208	0.02
Grit trap waste	22	38,371	0.13
Septage	6	12,669	0.04
Contaminated soil	53	629,653	2.19
Tires <sup>4</sup>	30	35,802	0.12
Pesticides	1	71	<0.01
Used Oil Filter	1	1	<0.01
Other	40	693,272	2.41
<b>Total</b>		<b>28,817,066</b>	<b>100</b>

1. NHIW (Non Hazardous Industrial Waste)

2. CESQG (Municipal Hazardous Waste from Conditionally Exempt Small Quantity Generator.)

3. RACM (Regulated Asbestos Containing Material.)

4. Tires – Only split, quartered, or shredded tires may be disposed in a landfill.

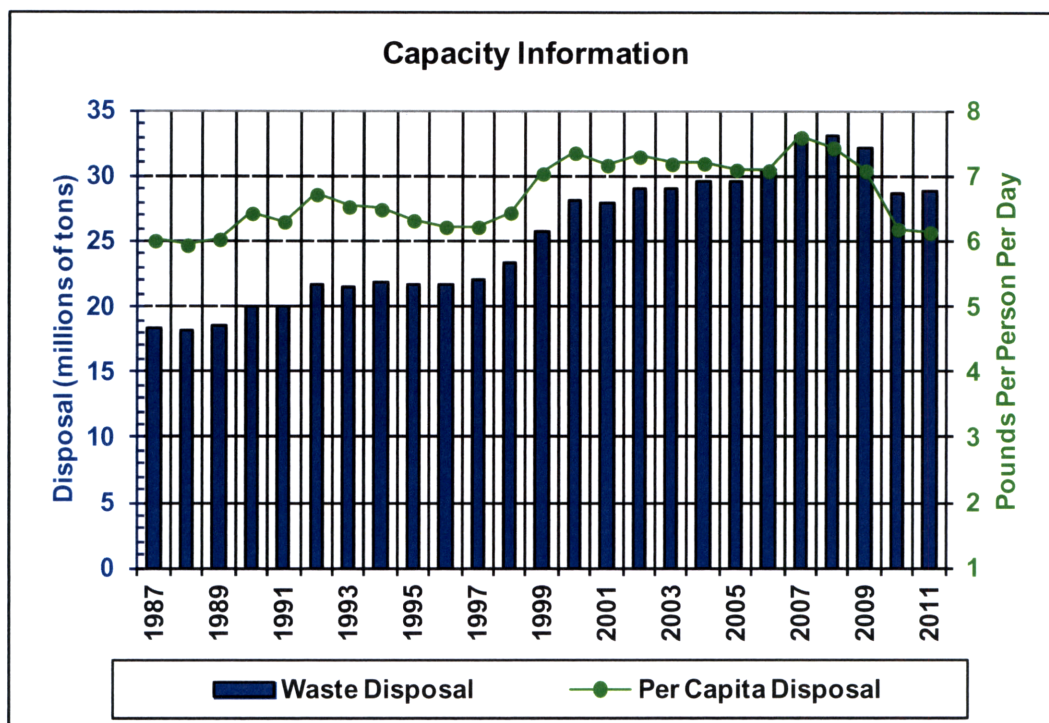
Note: Descriptions for several of the waste types listed in Table 3 are provided at the end of this report.

# Capacity Information

**Per capita rate.** For 2011, total disposal of MSW in the state was approximately 28.82 million tons. Using the state population estimate of 25,674,681, the per capita landfill disposal rate in Texas was 6.15 pounds per person per day, which is slightly less than the 2010 rate of 6.22 pounds. During this period, the population increased 1.83 percent. The continued decrease in the disposal rate over the last few years may be attributed to the public's efforts to minimize waste, which can be observed through ongoing public education and waste reduction/recycling campaigns.

See Figure 2 for a graphic representation of disposal amounts and per capita rates over time.

**Figure 2. Texas Total and Per Capita Landfill Disposal**



**Landfill capacity.** The total remaining landfill capacity in the state at the end of 2011 was 2.64 billion cubic yards. Based on reported compaction rates, this volume would hold 1.83 billion tons of waste and serve for 64 years.

Table 4 summarizes the remaining capacity for all landfill types. The analyses in this summary are based on the assumptions that no new landfill expansions or new permits will be issued and that the 2011 population and disposal amounts will remain constant.

**Table 4. Disposal Amounts and Remaining Capacity by Facility Type**

Facility Type	Number of Landfills	Disposal (Tons)	Remaining Capacity (Tons)	Remaining Capacity (Years)*
I	100	26,116,882	1,734,611,455	77
IV	20	2,372,705	77,814,233	33
IAE	35	187,455	10,003,433	50
IVAE	24	42,104	2,378,390	59
IAE and IVAE	14	97,920	6,075,271	51
<b>All types</b>	<b>193</b>	<b>28,817,066</b>	<b>1,830,882,782</b>	<b>64</b>

\* Average, assuming the 2011 disposal rate of 28.8 million tons per year.

**Growth and attrition.** According to submitted data, statewide capacity increased in 2011. The resulting net capacity increased by approximately 108 million tons (roughly 153 million cubic yards) or 6.28 percent from the statewide 2010 capacity.

**Statewide distribution.** Texas appeared to have an adequate reserve of landfill capacity in 2011. This capacity was not evenly distributed over every region of the state. There are 24 Regional Planning Commissions, also known as Councils of Governments (COGs), responsible for MSW management planning on a regional basis.<sup>iii</sup> With the new landfill (Twin Oaks Landfill) in the Brazos Valley Council of Governments (BVCOG) region opening in 2011, there were no regions reporting less than 10 years of remaining capacity. However, the South Texas Development Council (STDC) region reported only 12 years of remaining capacity. The capacity in this region will increase as a result of a permitted landfill expansion for San Ygnacio Landfill in Zapata County and when the new permitted landfill (Ponderosa Regional Landfill) in Webb County opens.

See Table 5 for further capacity details for each COG and Figure 3 for a map of the COG regions.

<sup>iii</sup> Texas Health and Safety Code, Section 363.0615.



Table 5. Analysis of MSW Landfill Disposal by Texas COGs for 2011

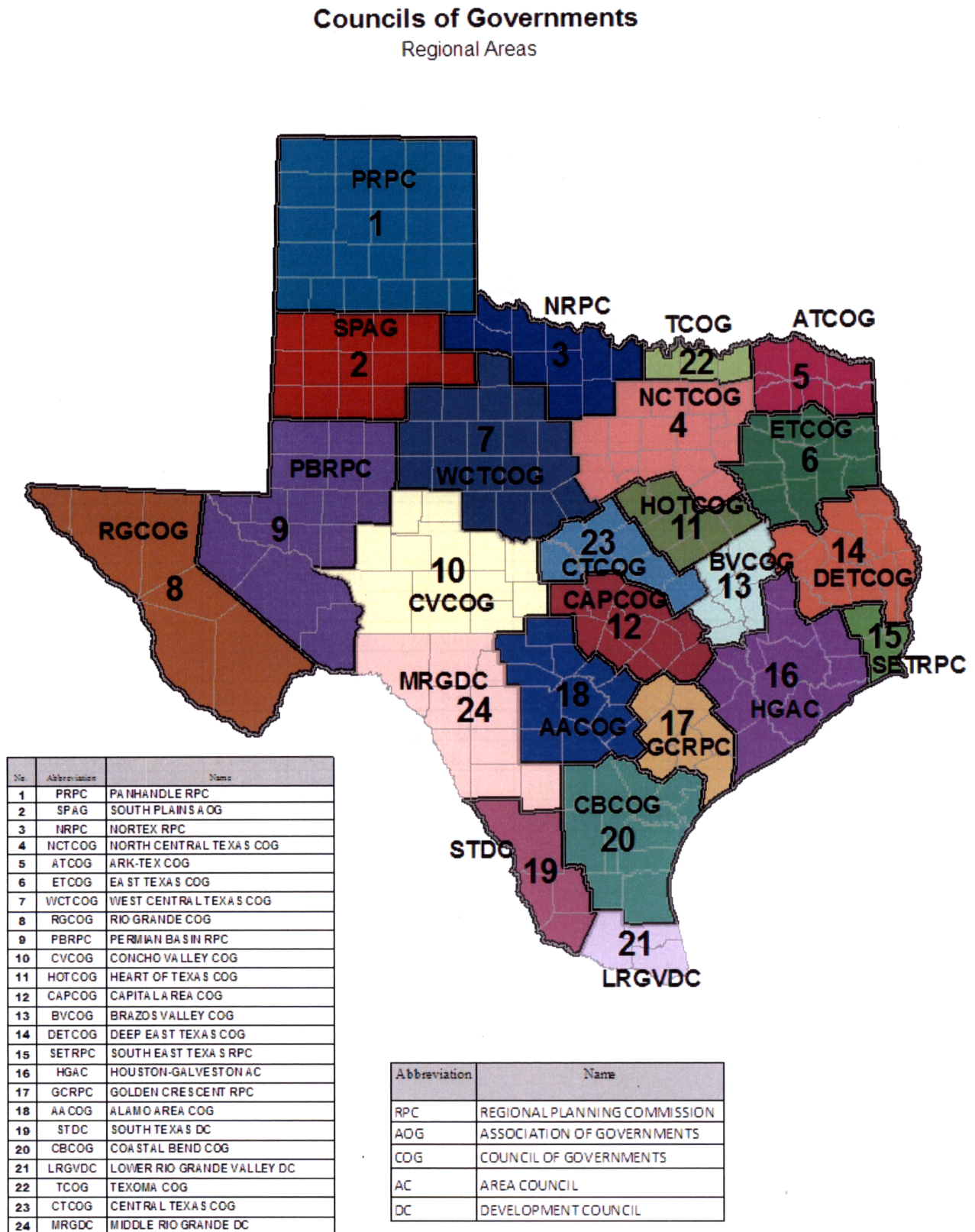
COG	Active MSW Landfills		2011 Disposal				Remaining Capacity		
	Count	% of Total	Tons	% of Total	Population	Per Cap*	Tons	% of Total	Years **
1 PRPC	21	10.88	529,858	1.84	432,899	6.71	42,785,848	2.34	81
2 SPAG	18	9.33	414,087	1.44	417,326	5.44	72,536,747	3.96	175
3 NRPC	2	1.04	303,222	1.05	221,651	7.50	56,413,588	3.08	186
4 NCTCOG	21	10.88	7,990,374	27.73	6,695,892	6.54	374,675,011	20.47	47
5 ARK-TEX	5	2.59	354,119	1.23	282,404	6.87	69,495,029	3.80	196
6 ETCOG	4	2.07	602,570	2.09	837,588	3.94	134,750,410	7.36	224
7 WCTCOG	8	4.15	471,688	1.64	328,460	7.87	116,017,474	6.34	246
8 RCGOG	8	4.15	491,643	1.71	846,031	3.18	23,887,655	1.30	48
9 PBRPC	15	7.77	595,550	2.07	425,701	7.67	49,224,241	2.69	83
10 CVCOG	10	5.18	173,011	0.60	155,585	6.09	4,796,841	0.26	28
11 HOTCOG	4	2.07	641,636	2.23	353,524	9.95	47,431,049	2.59	74
12 CAPCOG	5	2.59	1,795,664	6.23	1,843,238	5.34	81,560,766	4.46	45
13 BVCOG	2	1.04	291,246	1.01	322,964	4.94	17,248,258	0.94	59
14 DETCOG	4	2.07	566,143	1.96	381,606	8.13	41,273,854	2.25	73
15 SETRPC	4	2.07	690,065	2.39	390,535	9.68	32,491,793	1.77	47
16 HGAC	26	13.47	7,590,992	26.34	6,226,763	6.68	327,552,782	17.89	43
17 GCRPC	1	0.52	180,369	0.63	189,768	5.21	4,048,060	0.22	22
18 AACOG	6	3.11	2,253,436	7.82	2,356,747	5.24	172,910,401	9.45	77
19 STDC	4	2.07	343,218	1.19	337,758	5.57	4,163,801	0.23	12
20 CBCOG	7	3.63	734,042	2.55	575,767	6.99	97,282,218	5.31	133
21 LRGVDC	5	2.59	1,113,090	3.86	1,234,028	4.94	27,341,817	1.49	25
22 TCOG	2	1.04	182,381	0.63	193,773	5.16	16,866,189	0.92	92
23 CTCOG	2	1.04	393,919	1.37	455,637	4.74	8,747,837	0.48	22
24 MRGDC	9	4.66	114,744	0.40	169,036	3.72	7,381,113	0.40	64
<b>Totals</b>	<b>193</b>	<b>100</b>	<b>28,817,066</b>	<b>100</b>	<b>25,674,681</b>	<b>6.15</b>	<b>1,830,882,782</b>	<b>100</b>	<b>64</b>

\*Pounds per person per day

\*\*Average, at 2011 disposal rate



Figure 3. Texas Councils of Governments Map



## Effect of Recycling on MSW Disposal

**Recycling.** New programs are developed every year that increase the effect that reducing, reusing, and recycling have on preserving disposal capacity. Throughout the state, paper, glass, aluminum cans, plastic, scrap metal, wood, and numerous other items are recycled every day. The TCEQ promotes recycling and information regarding various recycling programs can be found on the agency's website at [www.tceq.texas.gov/p2/P2Recycle/recycling.html](http://www.tceq.texas.gov/p2/P2Recycle/recycling.html).

Currently, the effect of recycling in Texas is difficult to measure. An accurate statewide recycling rate cannot be obtained because there is no requirement to report quantities of materials diverted before reaching the gate at landfills or processing facilities

**Composting.** For 2011, 8 landfills, 16 composting facilities, and 2 transfer stations reported a total of 356,433 tons of waste materials processed during composting operations.

**Diversion.** Landfills and processing facilities are required to report the amount of waste diverted from the authorized operations at the facility. For 2011, a total of 1,686,713 tons of materials were reported as diverted for recycling or reuse: 111 landfills diverted 1,173,973 tons and 74 processing facilities diverted 512,740 tons.

Table 6 provides a breakdown for the estimated amounts of various material streams that disposal and processing facilities accepted and diverted in 2011.

**Table 6. Breakdown of Diverted Materials for 2011**

Material Type	Tons Diverted	Percent of Total Tons Diverted
Yard Waste or Brush	572,373	33.93
Metal	29,551	1.75
Glass	22,881	1.36
Plastics	15,210	0.90
Construction/Demolition Waste	408,256	24.20
Paper/Cardboard	169,377	10.04
Electronic Materials	374	0.02
White Goods	1,003	0.06
Tires	9,171	0.54
Automotive	3	<0.01
Used Oil	1,827	0.11
Unclassified Materials	456,687	27.08
<b>Total</b>	<b>1,686,713</b>	<b>100</b>

Note: Descriptions for several of the material types listed in Table 6 are provided at the end of this report.



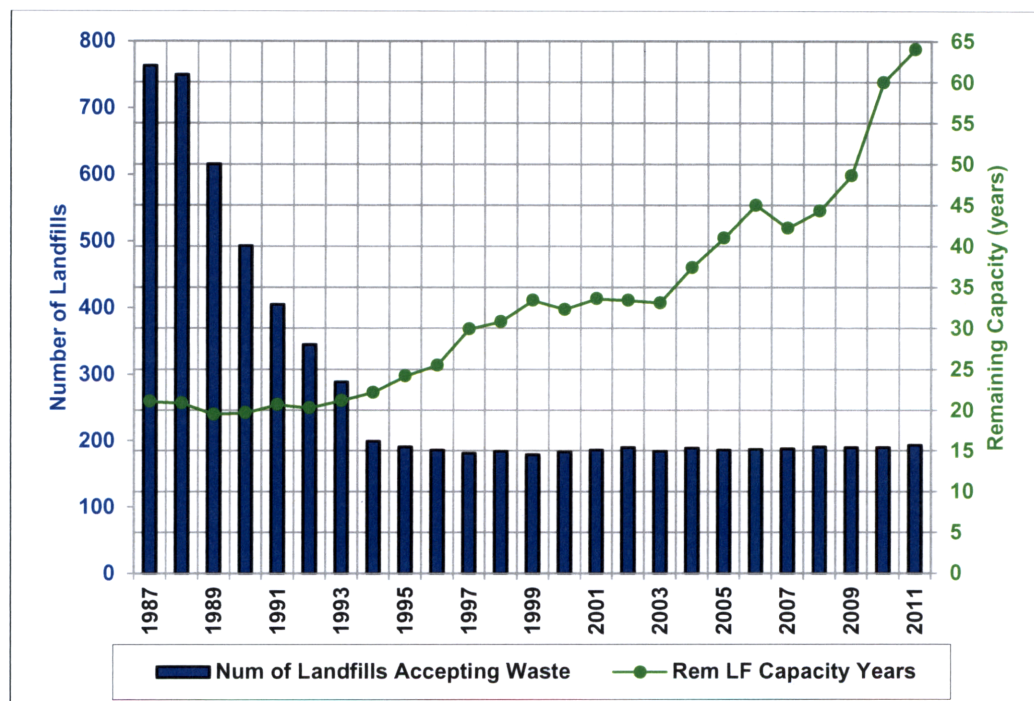
# Trend Analyses

**Landfill closures.** In 1987, there were 763 authorized landfills accepting waste. The reduction of active landfills between the late 1980's and mid 1990's was primarily due to the stringent requirements of the Federal Resource Conservation and Recovery Act (RCRA) Subtitle D. However, since the late 1990s this decreasing trend has leveled out, suggesting a continued move away from smaller community landfills and toward larger regional landfills.

**Capacity reserve.** From 1986 to the mid 1990s, the state's reserve capacity for disposal was less than 22 years. The current reserve capacity for disposal is approximately 64 years. The trend can be attributed primarily to increases in available volume of permitted disposal capacity and to improvements in compaction and diversion. In 1986, the average compaction rate was approximately 650 pounds of waste per cubic yard. The average in 2000 was approximately 1,000 pounds per cubic yard, and the 2011 average compaction rate was calculated as 1,115 pounds per cubic yard. While a small number of landfills did report improved compaction in 2011, the relative flattening of the trend may indicate that available and affordable landfill compaction technologies are nearing their peak efficiencies.

Figure 4 depicts the number of active landfills and the corresponding remaining capacity over time.

**Figure 4. Number of Active Landfills and Remaining Capacity**





**Landfill size.** In addition to improvements in the operation of landfills, the size and service areas of MSW landfills have continued to grow. In 1986, the statewide average landfill size was 50 acres with an average depth of 6.5 feet and an average height of 13 feet. According to data submitted and permit records, the statewide average landfill size was 220 acres in 2011. Three landfills added acreage through issued permit amendments during the year: Southeast Landfill (COG 4), Atascocita Landfill (COG 16), and Ralston Road Landfill (COG 16).

The 2011 average depth for MSW landfills was 35 feet and the average height was 78 feet. The number of landfills with a maximum permitted height over 100 feet was 53, and 15 landfills had a permitted height over 200 feet. In addition, two landfills had a permitted height over 300 feet.

**Counties served.** The 193 active landfills in the state reported the number of counties they served in 2011, as detailed below in Table 7. Service to more than one county was provided by 127 landfills (66 percent). Table 8 shows the number of active landfills in each Texas County.

**Table 7. Number of Texas Counties Served by MSW Landfills for 2011**

Number of Landfills	Counties Served
66	1
70	2 – 5
38	6 – 10
10	11 – 15
6	16 – 20
3	>20

Table 8. Number of Active Landfills by County for 2011

Anderson	0	Crane	1	Hartley	0	Madison	0	San Patricio	0
Andrews	1	Crockett	0	Haskell	1	Marion	0	San Saba	0
Angelina	1	Crosby	0	Hays	0	Martin	1	Schleicher	2
Aransas	0	Culberson	0	Hemphill	0	Mason	1	Scurry	1
Archer	0	Dallam	1	Henderson	0	Matagorda	0	Shackelford	0
Armstrong	1	Dallas	4	Hidalgo	4	Maverick	2	Shelby	0
Atascosa	0	Dawson	1	Hill	1	McCulloch	1	Sherman	0
Austin	0	Deaf Smith	1	Hockley	1	McLennan	2	Smith	1
Bailey	2	Delta	0	Hood	0	McMullen	1	Somervell	0
Bandera	0	Denton	4	Hopkins	0	Medina	0	Starr	2
Bastrop	0	DeWitt	0	Houston	0	Menard	1	Stephens	0
Baylor	0	Dickens	0	Howard	1	Midland	1	Sterling	0
Bee	0	Dimmit	1	Hudspeth	2	Milam	0	Stonewall	0
Bell	1	Donley	0	Hunt	1	Mills	0	Sutton	0
Bexar	2	Duval	1	Hutchinson	0	Mitchell	1	Swisher	1
Blanco	0	Eastland	0	Irion	1	Montague	0	Tarrant	3
Borden	0	Ector	1	Jack	0	Montgomery	1	Taylor	0
Bosque	0	Edwards	0	Jackson	0	Moore	2	Terrell	1
Bowie	2	El Paso	3	Jasper	0	Morris	0	Terry	2
Brazoria	2	Ellis	3	Jeff Davis	0	Motley	1	Throckmorton	0
Brazos	1	Erath	1	Jefferson	3	Nacogdoches	1	Titus	1
Brewster	2	Falls	0	Jim Hogg	0	Navarro	1	Tom Green	1
Briscoe	0	Fannin	0	Jim Wells	1	Newton	1	Travis	4
Brooks	1	Fayette	0	Johnson	2	Nolan	1	Trinity	0
Brown	1	Fisher	0	Jones	2	Nueces	2	Tyler	0
Burleson	0	Floyd	1	Karnes	0	Ochiltree	1	Upshur	0
Burnet	0	Foard	0	Kaufman	0	Oldham	1	Upton	2
Caldwell	0	Fort Bend	3	Kendall	0	Orange	0	Uvalde	2
Calhoun	0	Franklin	0	Kenedy	0	Palo Pinto	0	Val Verde	1
Callahan	0	Freestone	0	Kent	0	Panola	0	Van Zandt	0
Cameron	1	Frio	0	Kerr	1	Parker	1	Victoria	1
Camp	0	Gaines	1	Kimble	1	Parmer	0	Walker	0
Carson	1	Galveston	3	King	0	Pecos	1	Waller	0
Cass	0	Garza	1	Kinney	1	Polk	1	Ward	1
Castro	1	Gillespie	1	Kleberg	1	Potter	1	Washington	0
Chambers	2	Glasscock	1	Knox	0	Presidio	1	Webb	1
Cherokee	1	Goliad	0	La Salle	0	Rains	0	Wharton	0
Childress	1	Gonzales	0	Lamar	2	Randall	1	Wheeler	1
Clay	0	Gray	3	Lamb	4	Reagan	1	Wichita	2
Cochran	1	Grayson	2	Lampasas	0	Real	0	Wilbarger	0
Coke	1	Gregg	1	Lavaca	0	Red River	0	Willacy	0
Coleman	1	Grimes	1	Lee	0	Reeves	1	Williamson	1
Collin	1	Guadalupe	1	Leon	0	Refugio	0	Wilson	0
Collingsworth	1	Hale	1	Liberty	0	Roberts	0	Winkler	0
Colorado	1	Hall	1	Limestone	1	Robertson	0	Wise	0
Comal	1	Hamilton	0	Lipscomb	1	Rockwall	0	Wood	0
Comanche	0	Hansford	1	Live Oak	0	Runnels	0	Yoakum	1
Concho	0	Hardeman	0	Llano	0	Rusk	1	Young	0
Cooke	0	Hardin	1	Loving	0	Sabine	0	Zapata	1
Coryell	1	Harris	14	Lubbock	2	San Augustine	0	Zavala	2
Cottle	0	Harrison	0	Lynn	1	San Jacinto	0		





# Historical Data for MSW Landfills in Texas

Year	Waste Disposal (Tons)	State Population	Per Capita Disposal*	Number of Active Landfills	Number of Inactive Landfills**	Remaining Capacity (Cubic Yards)	Remaining Capacity (Tons)	Remaining Capacity (Years)
1988	18,114,295	16,668,639	5.95	750	84	1,162,374,628	377,771,754	21
1989	18,531,001	16,806,521	6.04	616	83	1,111,902,033	361,368,161	20
1990	19,969,615	16,986,510	6.44	493	142	1,124,524,795	393,583,678	20
1991	19,973,622	17,349,000	6.31	405	135	1,183,699,041	414,294,664	21
1992	21,675,661	17,655,650	6.73	345	77	1,193,233,770	440,730,048	20
1993	21,517,063	18,031,484	6.54	289	62	1,205,635,627	456,161,796	21
1994	21,808,274	18,378,185	6.50	199	58	1,269,565,453	483,752,986	22
1995	21,639,678	18,723,991	6.33	191	39	1,071,520,039	523,633,365	24
1996	21,738,137	19,128,261	6.23	186	35	1,023,799,597	554,095,949	26
1997	22,094,777	19,439,337	6.23	181	37	1,169,628,669	659,694,441	30
1998	23,259,425	19,759,614	6.45	184	29	1,300,609,247	716,302,147	31
1999	25,791,066	20,044,141	7.05	179	34	1,557,349,331	862,778,821	33
2000	28,034,517	20,851,820	7.37	183	44	1,633,321,824	904,891,939	32
2001	27,938,751	21,235,018	7.18	186	42	1,710,713,869	939,383,633	34
2002	29,061,966	21,779,893	7.31	190	40	1,691,970,227	971,314,962	33
2003	29,073,315	22,118,509	7.20	184	39	1,506,807,849	963,972,887	33
2004	29,581,785	22,490,022	7.21	189	34	1,826,587,075	1,134,462,509	37
2005	29,671,151	22,859,968	7.11	186	32	1,870,868,394	1,217,845,562	41
2006	30,453,702	23,507,783	7.10	187	28	2,110,807,960	1,366,311,822	45
2007	33,183,488	23,904,380	7.61	188	28	2,158,501,232	1,403,592,411	42
2008	33,078,196	24,326,974	7.45	191	35	2,167,272,920	1,439,621,096	44
2009	32,264,262	24,782,302	7.13	190	20	2,351,154,567	1,567,806,257	49
2010	28,637,988	25,213,445	6.22	190	18	2,483,194,375	1,722,333,910	60
2011	28,817,066	25,674,681	6.15	193	32	2,636,321,089	1,830,882,782	64

\*Using the Texas definition of MSW described on page 1 of this report

\*\*Number of inactive facilities that submitted annual reports, excluding landfills reporting Post-Closure status.



# Facility Data for MSW Landfills

Active landfills, organized by COG Region and Landfill Type  
 All values rounded to the nearest whole number

Key:  
 2011 Tons – Total Tons Landfilled in Fiscal Year 2011  
 Rem Yds – Remaining Landfill Capacity in Cubic Yards  
 Rate – Reported Compaction Rate at the Landfill in Pounds per Cubic Yards  
 Rem Tons – Remaining Landfill Capacity in Equivalent Tons (based on reported landfill compaction rate)  
 Rem Yrs – Remaining Landfill Capacity in Years (based on operator estimate where appropriate or on permit volumes and compacted waste acceptance rates)

## PANHANDLE REGIONAL PLANNING COMMISSION

COG	Permit	Site Name	County	Type	2011 Tons	RemYds	Rate	RemTons	RemYrs
1	73	City of Amarillo Landfill	Potter	1	212,774	71,816,007	800	28,726,403	100
1	211	City of Dumas Landfill	Moore	1	12,118	46,758	800	18,703	1
1	215	City of Hereford Landfill	Deaf Smith	4AE	3,535	325,065	850	138,153	35
1	414	Armstrong County Landfill	Armstrong	4AE	2,148	257,789	500	64,447	30
1	445	City of Dimmitt Landfill	Castro	1AE	5,646	1,230,708	750	461,516	81
1	570	City of McLean Landfill	Gray	1AE	680	554,637	800	221,855	13
1	589	City of Pampa Landfill	Gray	4AE	1,789	467,606	1000	233,803	130
1	791	Cal Farley's Boys Ranch	Oldham	4AE	500	141,000	400	28,200	50
1	876	City of Perryton Landfill	Ochiltree	1AE	5,975	1,403,428	890	624,526	95
1	955	City of Wellington Landfill	Collingsworth	1AE	5,121	529,887	800	211,955	41
1	1009	City of Tulia MSW Landfill	Swisher	1AE&4AE	4,937	812,854	850	345,463	69
1	1038	City of Dalhart Municipal Landfill	Dallam	1AE	9,811	1,378,071	785	540,893	18
1	1164	City of Panhandle MSW Landfill	Carson	1AE	2,601	745,376	750	279,516	108
1	1663	Southwest Landfill	Randall	1	187,077	4,042,103	1525	3,082,104	17
1	1943	City of Booker Landfill	Lipscomb	1AE	1,612	461,432	850	196,108	10
1	2238	City of Pampa Landfill	Gray	1	50,831	8,991,200	1320	5,934,192	97
1	2263	City of Childress Landfill	Childress	1AE&4AE	3,774	2,431,076	800	972,430	124
1	2266	City of Memphis	Hall	1AE	6,927	1,023,644	800	409,457	59

COG	Permit	Site Name	County	Type	2011 Tons	RemYds	Rate	RemTons	RemYrs
1	2281	City of Shamrock	Wheeler	1AE	4,584	339,850	800	135,940	30
1	2285	City of Dumas Landfill	Moore	4AE	4,613	287,076	800	114,830	6
1	2352	City of Spearman MSW Landfill	Hansford	1AE	2,805	106,714	850	45,354	161

**SOUTH PLAINS ASSOCIATION OF GOVERNMENTS**

COG	Permit	Site Name	County	Type	2011 Tons	RemYds	Rate	RemTons	RemYrs
2	69	Caliche Canyon Landfill	Lubbock	1	24,737	839,305	718	301,311	10
2	363	City of Amherst Landfill	Lamb	4AE	38	3,966	400	793	6
2	549	City of Matador Landfill	Motley	1AE	3,921	512,833	800	205,133	73
2	564	City of Muleshoe Landfill	Bailey	4AE	2,259	181,117	800	72,447	32
2	583	City of Olton Landfill	Lamb	1AE	10,630	952,540	666	317,196	46
2	1298	City of Littlefield Landfill	Lamb	4AE	5,352	328,041	1400	229,629	30
2	1733	City of Sundown Landfill	Hockley	4AE	90	231,924	850	98,567	219
2	2157	City of Plainview	Hale	1	26,436	10,303,190	563	2,900,348	103
2	2170	Brownfield MSW Landfill	Terry	1	15,027	4,505,598	955	2,151,423	184
2	2207	City of Floydada Landfill	Floyd	1AE&4AE	9,162	907,263	830	376,514	73
2	2217	Yoakum County Landfill	Yoakum	1AE&4AE	8,782	2,022,480	800	808,992	99
2	2227	City of Post Landfill	Garza	1AE	4,638	216,873	650	70,484	15
2	2252	West Texas Regional Disposal Facility	Lubbock	1	265,503	108,340,293	1162	62,945,710	228
2	2268	City of Morton Landfill	Cochran	4AE	148	807,514	400	161,503	130
2	2274	City of Littlefield Landfill	Lamb	1AE	6,965	1,327,644	1400	929,351	90
2	2291	City of Muleshoe Landfill	Bailey	1AE	7,087	523,429	800	209,371	30
2	2293	City of Meadow Landfill	Terry	1AE	12,114	841,185	800	336,474	28
2	2328	Tahoka MSW Landfill	Lynn	1AE	11,198	991,766	850	421,501	58

**NORTEX REGIONAL PLANNING COMMISSION**

COG	Permit	Site Name	County	Type	2011 Tons	RemYds	Rate	RemTons	RemYrs
3	1428	City of Wichita Falls Landfill	Wichita	1	141,251	72,486,700	1040	37,693,084	221
3	1571	IESI Buffalo Creek Landfill	Wichita	1	161,971	30,194,361	1240	18,720,504	116

**NORTH CENTRAL TEXAS COUNCIL OF GOVERNMENTS**

COG	Permit	Site Name	County	Type	2011 Tons	RemYds	Rate	RemTons	RemYrs
4	42	Skyline Landfill	Ellis	1	1,013,036	33,973,000	1520	25,819,480	25
4	47	IESI Weatherford Landfill	Parker	1	174,381	2,974,044	1400	2,081,831	12
4	62	McCommas Bluff Landfill	Dallas	1	1,355,411	98,151,274	1410	69,196,648	50
4	218	Southeast Landfill	Tarrant	1	437,007	28,094,939	1685	23,669,986	54
4	358	Arlington Landfill	Tarrant	1	776,510	12,808,777	1911	12,238,786	16
4	534	City of Cleburne Landfill	Johnson	1	944	26,975	1000	13,488	15
4	664	Stephenville Municipal Landfill	Erath	4	3,023	974,690	850	414,243	83
4	996	City of Grand Prairie Landfill	Dallas	1	162,358	13,226,300	1356	8,967,431	51
4	1025	DFW Landfill	Denton	1	1,132,100	16,022,000	1620	12,977,820	11
4	1195	Republic Maloy Landfill	Hunt	1	105,289	6,498,942	1623	5,273,891	50
4	1209	CSC Disposal and Landfill	Ellis	1	52,432	31,148,378	1270	19,779,220	378
4	1312	Camelot Landfill	Denton	1	388,366	7,596,109	2262	8,591,199	22
4	1394	Hunter Ferrell Landfill	Dallas	1	164,052	16,804,346	1548	13,006,564	74
4	1417	Turkey Creek Landfill	Johnson	1	348,734	11,400,314	1450	8,265,228	24
4	1590	City of Denton Landfill	Denton	1	147,838	11,895,150	1014	6,030,841	41
4	1745	ECD Landfill	Ellis	1	67,992	40,046,466	1575	31,536,592	464
4	1749	Lewisville Landfill	Denton	4	130,393	22,460,039	1891	21,235,967	163
4	1895	City of Garland Charles M Hinton Jr Landfill	Dallas	1	328,531	36,540,800	1015	18,544,456	57
4	1983	IESI Fort Worth C&D Landfill	Tarrant	4	342,287	5,460,864	1560	4,259,474	12
4	2190	Corsicana Regional Landfill	Navarro	1	100,593	24,363,415	1000	12,181,708	121
4	2294	121 Regional Disposal Facility	Collin	1	759,098	125,493,614	1125	70,590,158	93

**ARK-TEX COUNCIL OF GOVERNMENTS**

COG	Permit	Site Name	County	Type	2011 Tons	RemYds	Rate	RemTons	RemYrs
5	576	New Boston Landfill	Bowie	1	136,812	1,724,000	1100	948,200	7
5	797	Pleasant Oaks Landfill	Titus	1	63,864	20,202,839	1728	17,455,253	274
5	1454	Paris Landfill	Lamar	1	64,253	16,990,000	1350	11,468,250	114
5	1898	Lone Star AAP Area A Landfill	Bowie	1	22	2,035,159	850	864,943	137*
5	2358	Blossom Prairie Landfill	Lamar	1	89,169	77,516,765	1000	38,758,383	435



**EAST TEXAS COUNCIL OF GOVERNMENTS**

COG	Permit	Site Name	County	Type	2011 Tons	RemYds	Rate	RemTons	RemYrs
6	1249	IESI East Texas Regional Landfill	Rusk	1	129,398	10,514,989	1400	7,360,492	57
6	1327	Pinehill Landfill	Gregg	1	191,241	16,614,303	1734	14,404,601	75
6	1614	Royal Oaks Landfill	Cherokee	1	65,839	2,768,673	1868	2,585,941	39
6	1972	Greenwood Farms Landfill	Smith	1	216,092	106,717,618	2069	110,399,376	511

**WEST CENTRAL TEXAS COUNCIL OF GOVERNMENTS**

COG	Permit	Site Name	County	Type	2011 Tons	RemYds	Rate	RemTons	RemYrs
7	50	Sweetwater Landfill	Nolan	4AE	2,631	255,749	400	51,150	11
7	420	Colorado City MSW Facility	Mitchell	1AE&4AE	3,634	276,041	700	96,614	19
7	1302	Coleman Landfill	Coleman	4AE	87	13,565	500	3,391	29
7	1463	City of Snyder Landfill	Scurry	1	38,222	10,897,802	1000	5,448,901	142
7	1469	Abilene Regional Landfill	Jones	1	211,205	90,206,722	1866	84,162,872	399
7	1562	Brownwood Regional MSW Disposal Facility	Brown	1	61,988	18,478,381	1100	10,163,769	116
7	1604	Haskell Municipal Landfill	Haskell	1AE	8,917	871,999	700	305,200	10
7	2325	Abilene Environmental Landfill	Jones	1	145,005	19,731,971	1600	15,785,577	60

**RIO GRANDE COUNCIL OF GOVERNMENTS**

COG	Permit	Site Name	County	Type	2011 Tons	RemYds	Rate	RemTons	RemYrs
8	495	Hudspeth County Dell City Landfill	Hudspeth	1AE&4AE	760	209,438	850	89,011	26
8	729	McCombs Landfill	El Paso	1	2	16,384,471	1170	9,584,916	11
8	957	Hudspeth County Sierra Blanca Landfill	Hudspeth	1AE&4AE	4,620	1,325,665	850	563,408	70
8	1276	Big Bend National Park Landfill	Brewster	1AE	512	103,732	750	38,899	16
8	1422	Fort Bliss MSW Landfill	El Paso	1	10,734	77,678	735	28,551	3
8	1737	City of Presidio	Presidio	1AE	5,521	767,986	650	249,595	45
8	2197	City of Alpine Landfill	Brewster	1AE	12,994	3,493,092	329	574,771	44
8	2284	Clint Municipal Landfill	El Paso	1	456,500	21,809,409	1170	12,758,504	20

**PERMIAN BASIN REGIONAL PLANNING COMMISSION**

COG	Permit	Site Name	County	Type	2011 Tons	RemYds	Rate	RemTons	RemYrs
9	39	City of Seminole Landfill	Gaines	1AE&4AE	10,583	1,800,583	600	540,175	49
9	171	City of Andrews Landfill	Andrews	1AE&4AE	13,074	1,081,425	850	459,606	39
9	288	City of Big Spring	Howard	1	36,421	751,467	1152	432,845	11
9	427	City of Crane	Crane	1AE&4AE	4,375	4,536	700	1,588	0
9	517	Lamesa Landfill	Dawson	1	13,645	1,578,766	1007	794,909	58
9	566	City of McCamey Landfill	Upton	4AE	2,387	1,250,397	750	468,899	10
9	673	Terrell County Landfill	Terrell	4AE	264	29,893	300	4,484	106
9	691	Upton County Landfill	Upton	4AE	43	95,220	400	19,044	448
9	772	Monahans Landfill	Ward	1AE	11,630	1,115,180	650	362,433	31
9	976	City of Fort Stockton Landfill	Pecos	1AE&4AE	10,231	355,447	800	142,179	12
9	1605	City of Midland Landfill	Midland	1	195,089	34,528,694	1075	18,559,173	95
9	2120	City of Pecos Landfill	Reeves	1AE&4AE	12,610	911,536	850	387,403	27
9	2154	Glasscock County Landfill	Glasscock	1AE	392	76,869	250	9,609	21
9	2158	Charter Waste Landfill	Ector	1	280,776	34,186,935	1565	26,751,277	95
9	2189	City of Stanton Landfill	Martin	1AE	4,031	581,234	1000	290,617	36

**CONCHO VALLEY COUNCIL OF GOVERNMENTS**

COG	Permit	Site Name	County	Type	2011 Tons	RemYds	Rate	RemTons	RemYrs
10	26	City of Junction	Kimble	4AE	1,425	240,458	1000	120,229	4
10	79	San Angelo Landfill	Tom Green	1	146,612	5,815,122	826	2,401,645	17
10	86	Big Lake Landfill	Reagan	1AE	3,215	86,798	500	21,699	89
10	195	Mason Landfill	Mason	1AE	2,348	92,825	1000	46,413	12
10	349	City of Eldorado Landfill	Schleicher	4AE	44	811	1500	609	14
10	614	Robert Lee Landfill	Coke	4AE	34	24,461	850	10,396	1
10	1270	Barnhart Landfill	Irion	1AE	1,516	66,831	530	17,710	5
10	1404	City of Menard Landfill	Menard	4AE	33	12,427	850	5,281	50
10	1732	City of Brady Landfill	McCulloch	1AE&4AE	8,711	2,509,207	900	1,129,143	80
10	2264	City of Eldorado Landfill	Schleicher	1AE	9,073	1,391,621	1500	1,043,716	115

**HEART OF TEXAS COUNCIL OF GOVERNMENTS**

COG	Permit	Site Name	County	Type	2011 Tons	RemYds	Rate	RemTons	RemYrs
11	241	Itasca Landfill	Hill	1	234,478	32,833,777	2174	35,690,316	152
11	948	City of Waco Landfill	McLennan	1	240,284	7,076,266	1091	3,860,103	16
11	1558	Mexia Landfill	Limestone	1	38,180	7,972,942	1614	6,434,164	169
11	1646	Lacy Lakeview Recycling & Disp Fac	McLennan	1	128,693	1,653,104	1750	1,446,466	9

**CAPTIAL AREA COUNCIL OF GOVERNMENTS**

COG	Permit	Site Name	County	Type	2011 Tons	RemYds	Rate	RemTons	RemYrs
12	249	Austin Community Recycling & Disp Fac	Travis	1	255,470	14,561,921	1164	8,475,038	20
12	1405	Williamson County Recycling & Disp Fac	Williamson	1	249,750	62,063,581	1500	46,547,686	123
12	1447	BFI Sunset Farms Landfill	Travis	1	612,917	9,428,401	1400	6,599,881	4
12	1841	IESI Travis County C&D Landfill	Travis	4	102,234	2,778,908	1200	1,667,345	16
12	2123	Texas Disposal Systems Landfill	Travis	1	575,293	26,868,849	1360	18,270,817	32

**BRAZOS VALLEY COUNCIL OF GOVERNMENTS**

COG	Permit	Site Name	County	Type	2011 Tons	RemYds	Rate	RemTons	RemYrs
13	1444	Rock Prairie Road Landfill	Brazos	1	246,117	29,830	1592	23,745	0
13	2292	Twin Oaks Landfill	Grimes	1	45,130	36,962,476	932	17,224,514	60

**DEEP EAST TEXAS REGIONAL PLANNING COMMISSION**

COG	Permit	Site Name	County	Type	2011 Tons	RemYds	Rate	RemTons	RemYrs
14	720	City of Nacogdoches Landfill	Nacogdoches	1	74,639	3,519,298	900	1,583,684	30
14	1384	Polk County Landfill	Polk	1	114,718	8,796,727	1408	6,192,896	54
14	2105	Angelina County Waste Mgmt Center	Angelina	1	112,900	4,380,000	1200	2,628,000	20
14	2242	Newton County Landfill	Newton	1	263,886	43,755,172	1411	30,869,274	80

**SOUTHEAST TEXAS REGIONAL PLANNING COMMISSION**

COG	Permit	Site Name	County	Type	2011 Tons	RemYds	Rate	RemTons	RemYrs
15	1486	City of Beaumont MSW Landfill	Jefferson	1	237,965	20,059,014	1191	11,945,143	50
15	1815	City of Port Arthur Landfill	Jefferson	1	161,140	17,235,876	1000	8,617,938	47



COG	Permit	Site Name	County	Type	2011 Tons	RemYds	Rate	RemTons	RemYrs
15	2027	BFI Golden Triangle Landfill	Jefferson	1	246,419	9,508,962	2330	11,077,940	45
15	2214	IESI Hardin County Landfill	Hardin	1	44,542	1,417,953	1200	850,772	19

#### HOUSTON-GALVESTON AREA COUNCIL

COG	Permit	Site Name	County	Type	2011 Tons	RemYds	Rate	RemTons	RemYrs
16	203	Altair Landfill	Colorado	1	31,141	927,266	1200	556,360	17
16	261	McCarty Road Landfill	Harris	1	1,769,957	31,087,379	2250	34,973,301	20
16	1149	Galveston County Landfill	Galveston	1	295,373	6,238,160	1700	5,302,436	19
16	1193	Whispering Pines Landfill	Harris	1	36	10,920,409	2000	10,902,409	10
16	1301	Addicks - Fairbanks Landfill	Harris	4	54,703	932,077	1400	652,454	11
16	1307	Atascocita Landfill	Harris	1	934,020	46,677,264	1800	42,009,538	38
16	1403	Casco Landfill	Harris	4	23,544	2,032,687	900	914,709	39
16	1502	Chambers County Landfill	Chambers	1	31,586	332,858	850	141,465	5
16	1505	Blue Ridge Landfill	Fort Bend	1	575,100	150,364,182	1400	105,254,927	180
16	1535	Baytown Landfill	Chambers	1	284,680	11,246,521	1650	9,278,380	33
16	1539	Seabreeze Environmental Landfill	Brazoria	1	677,380	27,184,901	1712	23,270,275	35
16	1540	Greenshadow Landfill	Harris	4	105,842	3,207,107	1600	2,565,686	23
16	1565	Fairbanks Landfill	Harris	4	49	68,250	1400	47,775	5
16	1586	Greenbelt Landfill	Harris	4	117,069	4,063,080	900	1,828,386	16
16	1599	Greenhouse Road Landfill	Harris	4	119,268	6,754,767	2000	6,754,767	57
16	1708	Dixie Farm Road Landfill	Brazoria	4	34,170	2,436,328	880	1,071,984	31
16	1721	Coastal Plains Landfill	Galveston	1	550,406	14,931,076	1760	13,139,347	23
16	1752	Security Landfill	Montgomery	1	375,751	15,643,137	1600	12,514,510	33
16	1797	Sprint Fort Bend County Landfill	Fort Bend	4	250,116	17,663,820	1140	10,068,377	39
16	1849	North County Landfill	Galveston	4	392	3,689,566	2613	4,820,418	50
16	1921	Cougar Landfill	Harris	4	105,827	423,647	1400	296,553	2
16	2185	Hawthorn Park Landfill	Harris	4	285,395	1,945,405	1600	1,556,324	5
16	2240	Ralston Road Landfill	Harris	4	61,157	1,269,278	1000	634,639	11
16	2270	Fort Bend Regional Landfill	Fort Bend	1	549,900	42,628,352	1400	29,839,846	54
16	2304	Tall Pines Landfill	Harris	4	211,800	4,307,487	1000	2,153,744	10
16	2344	Lone Star Recycling and Disposal Facility	Harris	4	146,330	14,008,348	1000	7,004,174	35

**GOLDEN CRESCENT REGIONAL PLANNING COMMISSION**

COG	Permit	Site Name	County	Type	2011 Tons	RemYds	Rate	RemTons	RemYrs
17	1522	City of Victoria Landfill	Victoria	1	180,369	7,040,105	1150	4,048,060	23

**ALAMO AREA COUNCIL OF GOVERNMENTS**

COG	Permit	Site Name	County	Type	2011 Tons	RemYds	Rate	RemTons	RemYrs
18	66	Mesquite Creek Landfill	Comal	1	321,797	13,757,425	1750	12,037,747	28
18	1410	Tessman Road Landfill	Bexar	1	845,866	77,904,872	1360	52,975,313	63
18	1506	City of Kerrville Landfill	Kerr	1	301	745,521	1000	372,760	50
18	1848	Beck Landfill	Guadalupe	4	182,267	7,187,221	1300	4,671,694	17
18	1995	City of Fredericksburg Landfill	Gillespie	1	24,525	1,967,349	1180	1,160,736	45
18	2093	Covel Gardens Landfill	Bexar	1	878,679	112,991,279	1800	101,692,151	90

**SOUTH TEXAS DEVELOPMENT COUNCIL**

COG	Permit	Site Name	County	Type	2011 Tons	RemYds	Rate	RemTons	RemYrs
19	783	San Ygnacio Landfill	Zapata	1AE&4AE	2,668	325,492	1000	162,746	30
19	954	City of Roma Landfill	Starr	1AE	5,507	89,202	850	37,911	6
19	1033	City of La Grulla Landfill	Starr	4AE	19	62,273	850	26,466	0
19	1693	City of Laredo Sanitary Landfill	Webb	1	335,024	6,075,120	1296	3,936,678	12

**COASTAL BEND COUNCIL OF GOVERNMENTS**

COG	Permit	Site Name	County	Type	2011 Tons	RemYds	Rate	RemTons	RemYrs
20	235	City of Kingsville Landfill	Kleberg	1	22,261	3,496,361	817	1,428,263	49
20	262	City of Alice Landfill	Jim Wells	1	37,018	1,154,221	1200	692,533	8
20	379	Brooks County Landfill	Brooks	4AE	184	301,253	400	60,251	29
20	571	McMullen County Landfill	McMullen	1AE	500	15,333	750	5,750	11
20	1481	Duval County Landfill	Duval	4AE	6,568	67,222	800	26,889	4
20	2267	El Centro Landfill	Nueces	1	198,955	15,598,823	1465	11,426,138	57
20	2269	Cefe Valenzuela Landfill	Nueces	1	468,556	127,600,907	1311	83,642,395	179

**LOWER RIO GRANDE VALLEY DEVELOPMENT COUNCIL**

COG	Permit	Site Name	County	Type	2011 Tons	RemYds	Rate	RemTons	RemYrs
21	956	Edinburg Regional Sanitary Landfill	Hidalgo	1	369,871	8,909,426	1054	4,695,268	11
21	1273	Brownsville MSW Landfill	Cameron	1	272,339	29,440,306	1131	16,648,493	37
21	1727	Precinct 3 - Penitas Landfill	Hidalgo	1AE	4,564	0	1200	0	0
21	1948	BFI-Rio Grande Valley Landfill	Hidalgo	1	369,476	1,070,046	1500	802,535	2
21	2302	Edinburg Regional Type IV Landfill	Hidalgo	4	96,840	11,161,163	931	5,195,521	36

**TEXOMA COUNCIL OF GOVERNMENTS**

COG	Permit	Site Name	County	Type	2011 Tons	RemYds	Rate	RemTons	RemYrs
22	523	Hillside Landfill	Grayson	1	53,982	11,976,000	1000	5,988,000	102
22	2290	TASWA Disposal and Recycling Facility	Grayson	1	128,399	24,173,754	900	10,878,189	76

**CENTRAL TEXAS COUNCIL OF GOVERNMENTS**

COG	Permit	Site Name	County	Type	2011 Tons	RemYds	Rate	RemTons	RemYrs
23	692	Temple Recycling & Disposal Facility	Bell	1	372,599	10,111,966	1400	7,078,376	16
23	1866	Fort Hood Landfill	Coryell	1	21,320	3,035,383	1100	1,669,461	43

**MIDDLE RIO GRANDE VALLEY DEVELOPMENT COUNCIL**

COG	Permit	Site Name	County	Type	2011 Tons	RemYds	Rate	RemTons	RemYrs
24	207	City of Del Rio Municipal Landfill	Val Verde	1	39,049	1,920,000	690	662,400	15
24	630	City of Sabinal Landfill	Uvalde	4AE	6	3,662	400	732	10
24	1308	Crystal City MSW Facility	Zavala	1AE	4,258	1,477,640	850	627,997	147
24	1725	City of Uvalde Landfill	Uvalde	1	22,954	782,052	1000	391,026	17
24	1918	City of Eagle Pass Type IV Landfill	Maverick	4AE	7,908	1,168,525	750	438,197	27
24	2225	City of Carrizo Springs Landfill	Dimmit	1AE	4,619	1,699,760	600	509,928	70
24	2303	Zavala County MSWF Landfill	Zavala	1AE	4,128	203,546	550	55,975	30
24	2316	Maverick County El Indio MSW Landfill	Maverick	1	30,406	12,002,497	751	4,506,277	116
24	2354	Fort Clark Springs Landfill	Kinney	1AE	1,416	471,450	800	188,580	97



# Facility Data for MSW Processing Facilities

Active facilities, organized by COG Region and Type

Key:

Type 5AC - Medical waste autoclave facility

Type 5GG - Liquid waste (i.e., grease trap waste, grit trap waste, sludge, septage) processing facility

Type 5MW - Medical waste processor

Type 5RC - Mixed waste composting facility

Type 5RR - Materials recovery facility (MRF)

Type 5TL - Liquid Transfer Station

Type 5TS - Transfer station

Type 5WI - Incinerator (no electrical power generation)

2011 Tons - Total tons handled in fiscal year 2011 in terms of major permitted activity (e.g., for a transfer station, total tons transferred; for an incinerator, total tons incinerated). For a liquid waste processing facility, waste is reported in gallons but converted here to approximate tons equivalent.

## PANHANDLE REGIONAL PLANNING COMMISSION

COG	Permit/Registration	Site Name	County	Type	2011 Tons
1	76	City of Amarillo Transfer Station	Potter	5TS	153,471
1	40015	City of Borger Transfer Station	Hutchinson	5TS	18,789
1	40026	City of Canadian Transfer Station	Hemphill	5TS	5,862
1	40031	City of Cactus Transfer Station	Moore	5TS	2,145
1	40109	Stratford Transfer Station	Sherman	5TS	85
1	40192	City of Clarendon	Donley	5TS	4,880
1	43030	City of Pampa Liquid Waste Processing Facility	Gray	5GG	1,808

## SOUTH PLAINS ASSOCIATION OF GOVERNMENTS

COG	Permit/Registration	Site Name	County	Type	2011 Tons
2	2231	South Plains Disposal	Lubbock	5GG	7,659
2	40051	City of Levelland Transfer Station	Hockley	5TS	9,740
2	40084	Stericycle Lubbock Facility	Lubbock	5MW	2,189
2	40176	Caliche Canyon Transfer Station	Lubbock	5TS	185



**NORTEX REGIONAL PLANNING COMMISSION**

COG	Permit/Registration	Site Name	County	Type	2011 Tons
3	2229	IMC Waste Disposal	Wichita	5GG	15,782
3	2295	IESI Bowie Transfer Station	Montague	5TS	40,715
3	40059	City of Vernon Transfer Station	Wilbarger	5TS	15,407
3	40144	City of Seymour Transfer Station	Baylor	5TS	351

**NORTH CENTRAL TEXAS COUNCIL OF GOVERNMENTS**

COG	Permit/Registration	Site Name	County	Type	2011 Tons
4	12	City of Garland Transfer Station	Dallas	5TS	76,637
4	53	Lookout Drive Transfer Station	Collin	5TS	127,079
4	60	Fair Oaks Transfer Station	Dallas	5TS	50,308
4	227	City of University Park Transfer Station	Dallas	5TS	12,302
4	1145	Harry Hines Transfer Station	Dallas	5TS	160,805
4	1225	Cold Springs Processing & Disposal	Tarrant	5GG	79,417
4	1263	City of Mesquite Transfer Station	Dallas	5TS	44,745
4	1421	PSC Recovery Systems LLC	Dallas	5GG	52,879
4	1453	City of Dallas Transfer Station	Dallas	5TS	49,626
4	1494	Parkway Transfer Station	Collin	5TS	126,000
4	2045	Custer Road Transfer Station	Collin	5TS	220,532
4	2069	Liquid Environmental Solutions of TX Dallas Facility	Dallas	5GG	100,941
4	2245	Stericycle Garland Facility	Dallas	5AC	9,270
4	2256	Southwaste Disposal Dallas Facility	Tarrant	5GG	82,865
4	2306	IESI Minnis Drive Transfer Station	Tarrant	5TS	5,092
4	40052	Southwest Paper Stock Inc.	Tarrant	5TS	21,639
4	40080	Harrington Environmental Liquid Transfer Station	Johnson	5TL	2,613
4	40104	City of Mingus Transfer Station	Palo Pinto	5TS	173
4	40168	Cleburne Transfer Station	Johnson	5TS	49,577
4	40181	Somervell County Transfer Station	Somervell	5TS	2,422
4	40186	Westside Transfer Station	Tarrant	5TS	137,836
4	40196	Community Waste Disposal Transfer Station	Dallas	5TS	43,875
4	40212	Tom Dye Contractor	Palo Pinto	5TL	882
4	40229	Huckabay Ridge Liquid Waste Facility	Erath	5TS	45,977

COG	Permit/Registration	Site Name	County	Type	2011 Tons
4	40241	Oncore Technology	Tarrant	5MW	141
4	40253	Stericycle Garland Facility	Dallas	5AC	2,923

**ARK-TEX COUNCIL OF GOVERNMENTS (COG 5) – NO DATA AVAILABLE**

**EAST TEXAS COUNCIL OF GOVERNMENTS**

COG	Permit/Registration	Site Name	County	Type	2011 Tons
6	356	Vital Earth Resources	Upshur	5RC	2,422
6	1741	Sharps Enviromental Services, Inc.	Panola	5WI	735
6	2365	Edwards Construction	Gregg	5GG	0
6	40005	Beto Transfer Station Facility	Anderson	5TS	1,186
6	40006	Coffield Transfer Station Facility	Anderson	5TS	1,428
6	40040	IESI Palestine Transfer Station	Anderson	5TS	27,720
6	40172	City of Carthage Transfer Station	Panola	5TS	12,176
6	40174	Pittsburgh Transfer Station	Camp	5TS	18,363

**WEST CENTRAL TEXAS COUNCIL OF GOVERNMENTS (COG 7) – NO DATA AVAILABLE**

**RIO GRANDE COUNCIL OF GOVERNMENTS**

COG	Permit/Registration	Site Name	County	Type	2011 Tons
8	2355	Liquid Environmental Solutions of TX El Paso Facility	El Paso	5GG	12,291
8	40094	Stericycle El Paso Facility	El Paso	5TS	1,901
8	40237	El Paso C&D Recycling Plant	El Paso	5RR	5,504
8	42038	Fort Bliss Bio Cell Facility	El Paso	5RC	49

**PERMIAN BASIN REGIONAL PLANNING COMMISSION**

COG	Permit/Registration	Site Name	County	Type	2011 Tons
9	2339	Positive Impact Waste Solutions	Ector	5MW	205

**CONCHO VALLEY COUNCIL OF GOVERNMENTS**

COG	Permit/Registration	Site Name	County	Type	2011 Tons
10	2357	San Angelo Pro Pump Dewatering & Compost Facility	Tom Green	5GG	3,137
10	2359	D's Recycling Facility	Tom Green	5RC	7,613
10	42022	Kickapoo Composting Facility	Tom Green	5RC	2,106

**HEART OF TEXAS COUNCIL OF GOVERNMENTS (COG 11) – NO DATA AVAILABLE****CAPTIAL AREA COUNCIL OF GOVERNMENTS**

COG	Permit/Registration	Site Name	County	Type	2011 Tons
12	119	Eco Depot	Travis	5TS	9,716
12	466	Georgetown Transfer Station	Williamson	5TS	52,148
12	1787	Hays County Transfer Station	Hays	5TS	1,701
12	2250	Liquid Environmental Solutions of TX Austin Facility	Travis	5GG	26,580
12	2260	Stericycle Austin Autoclave	Bastrop	5AC	10,069
12	40007	IESI Blanco County Transfer Station	Blanco	5TS	19,372
12	40035	BFI Burnet Transfer Station	Burnet	5TS	108,717
12	42016	Texas Organic Recovery	Travis	5RC	33,026



**BRAZOS VALLEY COUNCIL OF GOVERNMENTS**

COG	Permit/Registration	Site Name	County	Type	2011 Tons
13	40018	City of Brenham Transfer Station Facility	Washington	5TS	23,260
13	40173	Washington County Transfer Station	Washington	5TS	29,815
13	40245	Terrabon Demonstration Facility	Brazos	5RR	324
13	42003	Bryan Compost Facility	Brazos	5RC	11,847
13	43026	Still Creek Liquid Waste Processing Facility	Brazos	5GG	4,450

**DEEP EAST TEXAS REGIONAL PLANNING COMMISSION**

COG	Permit/Registration	Site Name	County	Type	2011 Tons
14	40033	Crockett Transfer Station	Houston	5TS	1,322
14	40038	Tyler County Transfer Station	Tyler	5TS	0
14	40114	City of Crockett Transfer Station	Houston	5TS	5,787
14	40226	Pro Star Waste	Polk	5TS	3,273
14	43007	City of Nacogdoches Grease Treatment Facility	Nacogdoches	5GG	2,427

**SOUTHEAST TEXAS REGIONAL PLANNING COMMISSION**

COG	Permit/Registration	Site Name	County	Type	2011 Tons
15	40164	JTB Recycling Transfer Station Facility	Jefferson	5TS	323
15	40225	Triangle Waste Solutions	Jefferson	5TS	85,500
15	40231	Biomedical Waste Solutions	Jefferson	5MW	1,971
15	43000	JTB Recycling Transfer Station Facility	Jefferson	5GG	9,687

**HOUSTON-GALVESTON AREA COUNCIL**

COG	Permit/Registration	Site Name	County	Type	2011 Tons
16	164	Galveston Transfer Station	Galveston	5TS	80,765
16	1074	City of Houston Lawndale Southeast Transfer Station	Harris	5TS	190,736
16	1091	City of Houston Westpark Southwest Transfer Station	Harris	5TS	255,030
16	1092	City of Houston Sommermeyer Northwest Transfer Station	Harris	5TS	166,833
16	1117	Southwaste Disposal Lockwood Facility	Harris	5GG	24,779
16	1355	Ruffino Hills Transfer Station	Harris	5TS	218,146

COG	Permit/Registration	Site Name	County	Type	2011 Tons
16	1471	Sam Houston Recycling Center	Harris	5TS	76,210
16	1483	Koenig Street Transfer Station	Harris	5TS	107,954
16	1578	Hardy Road Transfer Station	Harris	5TS	242,425
16	2106	City of Weimar Transfer Station	Colorado	5TS	23,636
16	2222	Stericycle Inc Conroe Facility	Montgomery	5AC	13,715
16	2232	UTMB Galveston Solid Waste Incineration Facility	Galveston	5WI	488
16	2234	Liquid Environmental Solutions of TX Houston Facility	Harris	5GG	256,160
16	2235	Brazoria County Recycling Center	Brazoria	5RR	0
16	2239	WM Resource Recovery & Recycling Facility	Chambers	5WI	2,403
16	2241	Southwaste Disposal Hurst Facility	Harris	5GG	108,250
16	2298	B R Perrin Plant	Harris	5GG	40,698
16	2318	Don Tol Compost Facility	Wharton	5RC	2,125
16	2326	Stericycle Guhn Rd Processing Facility	Harris	5MW	150
16	2350	Big K Environmental	Harris	5GG	85,786
16	40028	Matagorda County Transfer Station	Matagorda	5TS	5,703
16	40053	Best Septic Tank Cleaning	Fort Bend	5TL	2,215
16	40056	City of Huntsville Transfer Station	Walker	5TS	39,341
16	40079	Stericycle - Fresno	Fort Bend	5TS	2,952
16	40098	BFI Houston Resource Renewal Complex Transfer Station Facility	Harris	5TS	18,245
16	40189	Egbert Transfer Station	Harris	5TS	53,420
16	40191	Country Waste Inc	Austin	5TS	8,747
16	40211	Sprint Recycling Center - Northeast	Harris	5TS	25,723
16	40217	Tanner Road Facility	Harris	5TS	23,076
16	40236	Excell Disposal Waste Containers	Harris	5TS	43
16	42037	New Earth Composting	Montgomery	5RC	10,508
16	43018	A-Affordable Vacuum Service & Disposal Site	Harris	5GG	2,623,855

**GOLDEN CRESCENT REGIONAL PLANNING COMMISSION**

COG	Permit/Registration	Site Name	County	Type	2011 Tons
17	2181	Jackson County MSW Transfer Station & Recycling Center	Jackson	5TS	3,391
17	2330	Victoria Environmental	Victoria	5GG	30,908
17	2366	Victoria Regional WWTP Grit Trap Waste Facility	Victoria	5GG	652
17	40011	City of Hallettsville Transfer Station	Lavaca	5TS	929
17	40017	City of Yoakum Transfer Station	Dewitt	5TS	20,236
17	42034	Victoria Compost Facility	Victoria	5RC	49,268

**ALAMO AREA COUNCIL OF GOVERNMENTS**

COG	Permit/Registration	Site Name	County	Type	2011 Tons
18	1443	City of San Antonio Starcrest Transfer Station	Bexar	5TS	147,783
18	2248	Liquid Environmental Solutions of TX San Antonio Facility	Bexar	5GG	41,446
18	2317	Southwaste Disposal LLC San Antonio Facility	Bexar	5RC	41,819
18	40240	Kerrville Transfer Station	Kerr	5TS	51,345
18	40244	Medsharps, LLC Schertz Facility	Comal	5MW	796
18	42028	City of Kerrville Composting Facility	Kerr	5RC	7,700
18	42032	New Earth Composting	Bexar	5RC	68,198
18	43011	City of La Coste	Medina	5GG	55,402

**SOUTH TEXAS DEVELOPMENT COUNCIL**

COG	Permit/Registration	Site Name	County	Type	2011 Tons
19	40238	Starr County Transfer Station	Starr	5TS	735

**COASTAL BEND COUNCIL OF GOVERNMENTS**

COG	Permit/Registration	Site Name	County	Type	2011 Tons
20	2319	Texas Sludge Disposal Composting Facility	San Patricio	5RC	11,704
20	40002	Live Oak County Transfer Station	Live Oak	5TS	600
20	40027	Aransas County Transfer Station	Aransas	5TS	2,891
20	40093	Liquid Environmental Solutions of TX Robstown Facility	Nueces	5TL	1,050
20	40228	JC Elliott Transfer Station	Nueces	5TS	70,404

**LOWER RIO GRANDE VALLEY DEVELOPMENT COUNCIL**

COG	Permit/Registration	Site Name	County	Type	2011 Tons
21	748	Pharr Transfer Station	Hidalgo	5TS	15,585
21	2334	Stericycle Harlingen Processing Facility	Cameron	5MW	0
21	2343	Valley De-Watering Services Inc.	Hidalgo	5GG	11,935
21	2346	Liquid Environmental Solutions of TX Weslaco Facility	Hidalgo	5GG	17,956
21	40110	City of Harlingen Transfer Station	Cameron	5TS	60,181
21	42015	City of Brownsville Composting Facility	Cameron	5RC	32,897

**TEXOMA COUNCIL OF GOVERNMENTS**

COG	Permit/Registration	Site Name	County	Type	2011 Tons
22	1030	City of Gainesville	Cooke	5TS	29,446
22	1136	City of Sherman Transfer	Grayson	5TS	10,528
22	40242	Medical Waste of North Texas	Fannin	5MW	183

**CENTRAL TEXAS COUNCIL OF GOVERNMENTS**

COG	Permit/Registration	Site Name	County	Type	2011 Tons
23	2368	S & M Vacuum and Waste, Ltd	Bell	5GG	1,271
23	40004	City of Hico Transfer Station	Hamilton	5TS	56
23	40145	City of Copperas Cove Transfer Station	Coryell	5TS	20,954
23	40160	City of San Saba Transfer Station	San Saba	5TS	2,953
23	40209	Killeen Transfer Station	Bell	5TS	91,553
23	40234	Stericycle Temple Facility	Bell	5TS	687
23	42017	City of Copperas Cove Compost Facility	Coryell	5RC	1,901
23	42035	Bell County WCID 1 Regional Compost Facility	Bell	5RC	79
23	43010	S & M Vacuum & Waste Ltd	Bell	5GG	2,033

**MIDDLE RIO GRANDE VALLEY DEVELOPMENT COUNCIL**

<b>COG</b>	<b>Permit/Registration</b>	<b>Site Name</b>	<b>County</b>	<b>Type</b>	<b>2011 Tons</b>
24	40034	City of Sabinal	Uvalde	5TS	1,138
24	40042	City of Eagle Pass Transfer Station	Maverick	5TS	3,772
24	40057	Rocksprings Transfer Station	Edwards	5TS	789



# Facility Data for MSW Facilities Recovering Landfill Gas for Beneficial Use

Active gas recovery facilities (Type 9GR), organized by COG Region and Facility Permit or Registration Number

Key:  
 LFG – Landfill Gas  
 LFGTE – Landfill Gas to Energy  
 Landfill – Permit Number of the landfill from which the LFGTE facility recovers gas  
 Gas Processed – Estimated Gas Processed at the facility in Fiscal Year 2011  
 Gas Distributed Offsite – Estimated Gas Distributed Off-site from the facility in Fiscal Year 2011  
 Power Generated & Used – Estimated Gas Generated and Used On-site by the facility in Fiscal Year 2011  
 Power Generated & Sold – Estimated Gas Generated and Sold by the facility in Fiscal Year 2011  
 ft<sup>3</sup> – standard cubic feet  
 kWh – kilowatt hours

COG	Permit/ Registration	Site Name	County	Landfill	Gas Processed (ft <sup>3</sup> )	Gas Distributed Off-site (ft <sup>3</sup> )	Power Generate d & Used (kWh)	Power Generated & Sold (kWh)
4	1025	DFW LFGTE Facility	Denton	1025	1,973,164,980	0	79,010,943	67,399,200
4	48012	City of Arlington LFG Processing Facility	Tarrant	358	637,155	637,155	na	na
4	48016	City of Denton LFGTE Facility	Denton	1590	128,499,908	0	31,959	11,004,635
4	48018	Skyline LFGTE Facility	Dallas	42	795,798,000	0	32,473,000	36,294,272
4	48021	Fort Worth Methane LLC	Tarrant	464	219,200,577	0	526,499	10,388,753
4	48023	Trinity Oaks Energy LLC	Dallas	556	523,155,313	0	1,367,684	22,252,068
4	48027	Westside LFGTE Facility	Tarrant	1019	749,625,000	0	30,907,349	29,221,081
4	48028	Camelot LFGTE Facility	Denton	1312	na	na	14,500,500	13,985,437
4	48030	McKinney LFGTE Facility	Collin	568	480,525,865	na	6,129,291	6,086,320
4	48033	McCommas Bluff LFG Processing Facility	Dallas	62	2,128,921,000	1,242,707,000	na	na
6	48026	Greenwood Farms LFG Treatment Facility	Smith	1972	611,651,222	352,129,000	na	na
11	48020	City of Waco LFG Recovery Facility	McLennan	948	503,836,938	503,836,938	na	na
12	48019	Austin Community Landfill Power Plant	Travis	249	1,068,044,000	867,153,000	2,391	35,578
16	1777	McCarty Road LFG Recovery Facility	Harris	261	2,658,900,000	1,330,900,000	na	na



COG	Permit/ Registration	Site Name	County	Landfill	Gas Processed (ft <sup>3</sup> )	Gas Distributed Off-site (ft <sup>3</sup> )	Power Generate d & Used (kWh)	Power Generated & Sold (kWh)
16	48006	Atascocita LFGTE Facility	Harris	1307	na	na	59,927,550	55,553,537
16	48008	Security LFGTE Facility	Montgomery	1752	na	na	15,869,342	14,358,849
16	48009	Coastal Plains LFGTE Facility	Galveston	1721	na	na	35,568,050	31,786,260
16	48010	Blue Bonnet LFGTE Facility	Harris	1279	na	na	3,521,449	3,309,878
16	48022	Baytown LFGTE Facility	Chambers	1535	na	na	17,222,840	15,861,055
16	48025	Ameresco McCarty Energy	Harris	261	1,521,184,710	1,521,184,710	na	na
18	48005	Tessman Road LFG Power Station	Bexar	1410	491,036,660	0	1,746,500	41,986,948
18	48015	Covel Gardens LFG Power Station	Bexar	2093	681,153,371	0	2,742,355	62,814,740
18	48029	Mesquite Creek LFGTE Facility	Comal	66	661,752,000	435,553,000	725	17,906

# MSW Waste and Material Type Descriptions

Waste/Material Type	Description
Brush	Cuttings or trimmings from trees, shrubs, or lawns and similar materials.
CESQG	Conditionally exempt small-quantity generator – a person that generates no more than 220 pounds of hazardous waste in a calendar month.
Class 1 wastes	Any industrial solid waste or mixture of industrial solid wastes that because of its concentration, or physical or chemical characteristics is toxic, corrosive, flammable, a strong sensitizer or irritant, a generator of sudden pressure by decomposition, heat, or other means, or may pose a substantial present or potential danger to human health or the environment when improperly processed, stored, transported, or disposed of or otherwise managed, as further defined in §335.505 of this title (relating to Class 1 Waste Determination).
Class 2 wastes	Any individual solid waste or combination of industrial solid waste that are not described as Hazardous, Class 1, or Class 3 as defined in §335.506 of this title (relating to Class 2 Waste Determination).
Class 3 wastes	Inert and essentially insoluble industrial solid waste, usually including, but not limited to, materials such as rock, brick, glass, dirt, and certain plastics and rubber, etc., that are not readily decomposable, as further defined in §335.507 of this title (relating to Class 3 Waste Determination).
Commercial solid waste	All types of solid waste generated by stores, offices, restaurants, warehouses, and other nonmanufacturing activities, excluding residential and industrial wastes.
Construction/Demolition Waste	Waste resulting from construction or demolition projects; includes all materials that are directly or indirectly the by-products of construction work or that result from demolition of buildings and other structures, including, but not limited to, paper, cartons, gypsum board, wood, excelsior, rubber, and plastics.
Grease trap waste	Material collected in and from a grease interceptor in the sanitary sewer service line of a commercial, institutional, or industrial food service or processing establishment, including the solids resulting from dewatering processes.
Grit trap waste	Grit trap waste includes waste from interceptors placed in the drains prior to entering the sewer system at maintenance and repair shops, automobile service stations, car washes, laundries, and other similar establishments.
Litter	Rubbish and putrescible waste.

Waste/Material Type	Description
Medical waste	Treated and untreated special waste from health care-related facilities that is comprised of animal waste, bulk blood, bulk human blood, bulk human body fluids, microbiological waste, pathological waste, and sharps as those terms are defined in 25 TAC §1.132 (relating to Definitions) from the sources specified in 25 TAC §1.134 (relating to Application), as well as regulated medical waste as defined in 49 Code of Federal Regulations §173.134(a)(5), except that the term does not include medical waste produced on a farm or ranch as defined in 34 TAC §3.296(f) (relating to Agriculture, Animal Life, Feed, Seed, Plants, and Fertilizer), nor does the term include artificial, nonhuman materials removed from a patient and requested by the patient, including, but not limited to, orthopedic devices and breast implants.
Municipal solid waste	Solid waste resulting from or incidental to municipal, community, commercial, institutional, and recreational activities, including garbage, rubbish, ashes, street cleanings, dead animals, abandoned automobiles, and all other solid waste other than industrial solid waste.
NHIW	Non-Hazardous Industrial Waste. Includes Class 1 non-hazardous, Class 2 & Class 3 wastes.
Non-RACM	Non-regulated asbestos-containing material as defined in 40 Code of Federal Regulations Part 61. This is asbestos material in a form such that potential health risks resulting from exposure to it are minimal.
Paper	A material made from plant fibers (such as but not limited to wood pulp, rice hulls, and kenaf). The sludge byproduct resulting from the production of paper may be approved as a feedstock pursuant to §332.33(b) of this title (relating to Required Forms, Applications, Reports, and Request To Use the Sludge Byproduct of Paper Production)
RACM	Regulated asbestos-containing material as defined in 40 Code of Federal Regulations Part 61, as amended, includes: friable asbestos material, Category I nonfriable ACM that has become friable; Category I nonfriable ACM that will be or has been subjected to sanding, grinding, cutting, or abrading; or Category II nonfriable ACM that has a high probability of becoming or has become crumbled, pulverized, or reduced to powder by the forces expected to act on the material during demolition or renovation operations.
Residential Waste (Household waste)	Any solid waste (including garbage, trash, and sanitary waste in septic tanks) derived from households (including single and multiple houses, hotels, and motels, bunkhouses, ranger stations, crew quarters, campgrounds, picnic grounds, and day-use recreation areas); does not include yard waste or brush that is completely free of any household wastes.
Septage	The liquid and solid material pumped from a septic tank, cesspool, or similar sewage treatment system.
Sludge	Any solid, semi-solid, or liquid waste generated from a municipal, commercial, or industrial wastewater treatment plant, water-supply treatment plant, or air pollution control facility, exclusive of the treated effluent from a wastewater treatment plant.

Waste/Material Type	Description
Tires (Scrap)	Any tire that can no longer be used for its original intended purpose. Only split, quartered, or shredded tires may be disposed of in a landfill.
Used Oil	Any oil that has been refined from crude oil, has been used, and, as a result of such use, is contaminated by physical or chemical impurities.
White Goods	Discarded large household appliances such as refrigerators, stoves, washing machines, or dishwashers.
Yard Waste	Leaves, grass clippings, yard and garden debris, and brush, including clean woody vegetative material not greater than six inches in diameter that results from landscaping maintenance and land-clearing operations. The term does not include stumps, roots, or shrubs with intact root balls.







