

### In This Issue

- [Texans Generate Less Waste!](#)
- [Hotline Helps for Free](#)
- [Kick Off 2012 on the Right Foot!](#)
- [Don't Forget...](#)
- [Get Involved, Offer Your Comment](#)
- [TCEQ Highlighted Publication](#)

### Take Care of Texas Tips

#### At Home:

##### Cook Efficiently

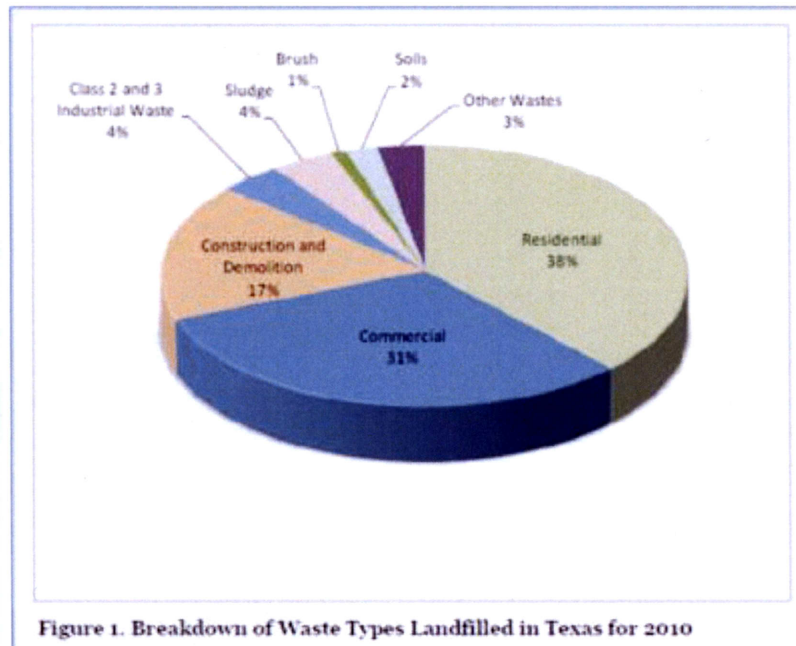
Help reduce energy use and air emissions by making sure that your pots and pans are not smaller in diameter than your stove's burners. A 6-inch pot on an 8-inch burner wastes more than 40 percent of the burner's heat, as well as the energy it takes to produce that heat. Using an appropriately sized pot on stove burners can save about \$36 each year for an electric range, or \$18 per year for a gas range. Keeping a gas range's burners clean can also ensure that the gas is burning efficiently.

### Texans Generate Less Waste!

Texans created less waste per person in 2010 than they did in 2009. On average, each Texan disposed of 6.2 pounds a day in 2010 compared with 7.1 pounds a day the previous year. According to a new TCEQ report, *Municipal Solid Waste in Texas: A Year in Review* ([www.tceq.texas.gov/assets/public/comm\\_exec/pubs/as/187\\_11.pdf](http://www.tceq.texas.gov/assets/public/comm_exec/pubs/as/187_11.pdf)), the decrease may be attributed to "the public's efforts to minimize waste, positive impact of waste reduction/recycling campaigns, and ongoing public education efforts."

Other information you can find in this report:

- Definitions of different types of waste
- Historical waste data
- Breakdown of the types of waste sent to landfills
- Breakdown of waste generated and remaining landfill capacity by region



## **Around the Office:**

### **Use Reuseable Dishes**

Stock your office kitchen or break rooms with reusable glasses, plates, and flatware instead of disposables. Encourage employees to reuse coffee mugs and dishes daily by washing and drying them on a dish rack. To further reduce waste, invite employees to bring their own tableware and napkins to office luncheons and parties.

Want to further reduce the amount of waste generated in Texas? Provide our Quick Guide to Recycling Resources to your customers, employees, and neighbors. View the publication at <http://www.tceq.state.tx.us/publications/gi/gi-288.html/view>.

---

## **Hotline Helps for Free**

The Small Business and Local Government Assistance Program offers free, confidential technical assistance without the threat of enforcement. Call toll free at 800-447-2827 or visit the website at [www.TexasEnviroHelp.org](http://www.TexasEnviroHelp.org).

---

## **Kick Off 2012 on the Right Foot!**

We promise to exercise more, eat right, and spend more time with our family, but what are we doing for Texas in the new year? As the clock strikes 12:00 on New Year's Eve, resolve to Take Care of Texas for a 2012 everyone can enjoy! Here are six helpful tips to get you started:

**2012**



- Reduce air emissions by driving the speed limit
- Help keep your watershed clean by picking up after your pet
- Recycle your unwanted computer
- Use less water
- Reuse office supplies
- Look for opportunities to carpool to work and school

Click here for details on these tips and other ways you can "Take Care of Texas": [www.takecareoftexas.org/do-your-part-en/](http://www.takecareoftexas.org/do-your-part-en/).

---

## **Don't Forget...**

- Pollution Prevention Workshop, [www.tceq.texas.gov/p2/events/P2Workshops](http://www.tceq.texas.gov/p2/events/P2Workshops) Houston, Dec. 6-7.
- Take Care of Texas Holiday Tips at [www.tceq.texas.gov/p2/education/Seasonal%20Tips](http://www.tceq.texas.gov/p2/education/Seasonal%20Tips).
- Visit the TCEQ Texas Drought and Information Web page at [www.tceq.texas.gov/response/drought](http://www.tceq.texas.gov/response/drought).



## Get Involved, Offer Your Comment

Want to get involved with the TCEQ to help the environment? Find opportunities to comment on TCEQ activities, including pending permit applications and proposed rules at [www.tceq.texas.gov/about/comments.html](http://www.tceq.texas.gov/about/comments.html).

---

### Highlighted TCEQ Publication



***Texas School Recycling Guide, GI-30,*** (<http://www.tceq.texas.gov/publications/gi/gi-030.html>) is a technical guidance manual for administrators on reducing waste and starting a school recycling program. Includes tips for Texas schools.

You can also order TCEQ publications. See ordering instructions on our website at [www.tceq.texas.gov/publications](http://www.tceq.texas.gov/publications).



**The Take Care of Texas program is on Facebook.**

Connect with Take Care of Texas to find out about environmental events, tips, and interesting tidbits from fellow Texans. Visit our page at [www.FaceBook.com/TakeCareOfTexas](http://www.FaceBook.com/TakeCareOfTexas).

### Take the Survey!

The TCEQ values your opinion on how we are doing and how we can improve—fill out a survey today. Go online at [www.tceq.texas.gov/goto/customersurvey](http://www.tceq.texas.gov/goto/customersurvey), or request a paper copy by calling 800-687-4040.

(PD-25/12-11)