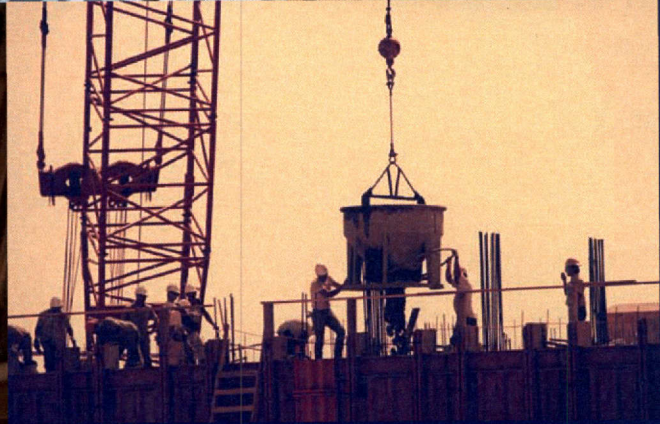
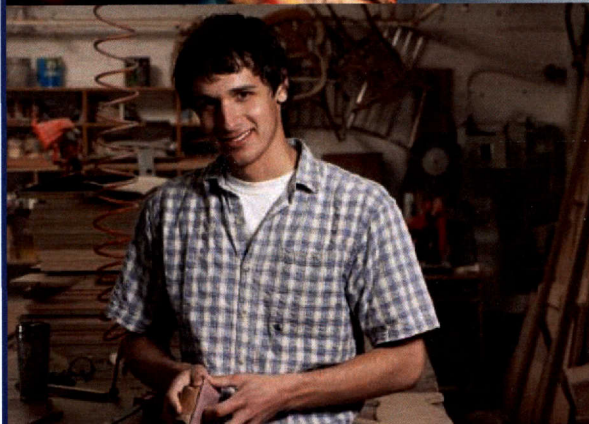
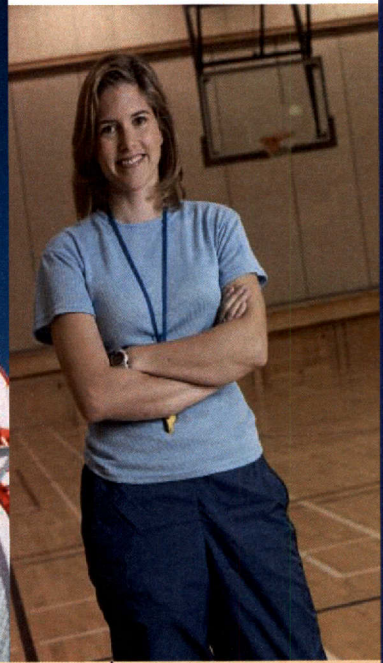
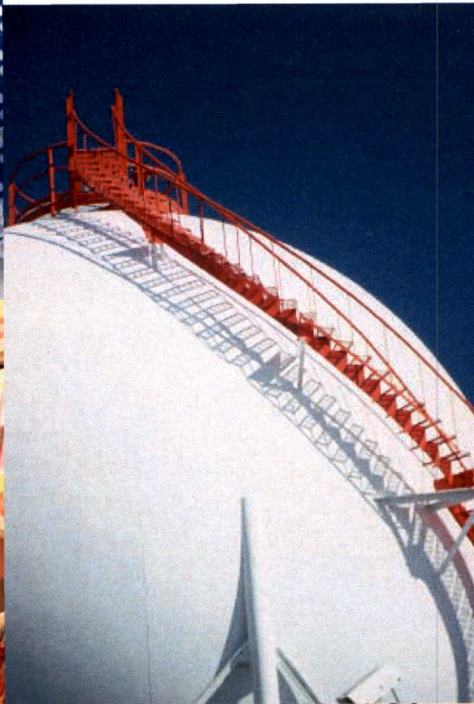
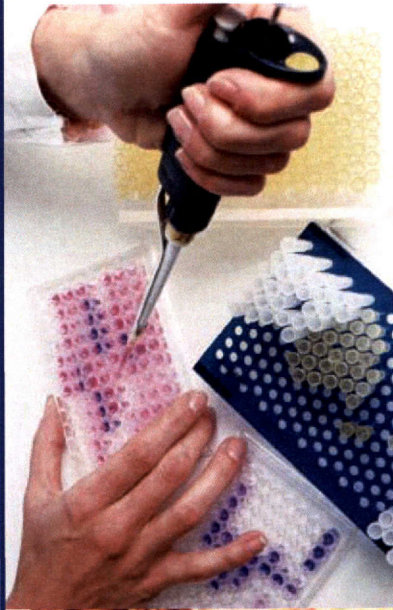


FIRST QUARTER 2009

TEXAS QUARTERLY CENSUS OF EMPLOYMENT & WAGES



by Industry and County



Prepared by the Labor Market & Career Information
Department, Texas Workforce Commission

Quarterly Census of Employment and Wages by Industry & County

Employment and Payroll under the Texas Unemployment Compensation Act

Description of the Data

This publication contains employment data, payroll data, and average weekly wages by county for the specified quarter. These data were compiled from quarterly employment and wage reports submitted by employers subject to the Texas Unemployment Compensation Act. Quarterly average employment data have been tabulated by industry according to the North American Industry Classification System (NAICS) manual (see Industry Classification below) on a statewide and county basis. Payroll data represent the total wages paid by the establishment during the quarter. Total wages are provided for each county and by industry for the state. Average weekly wage data are computed from employment and total wages reported by all establishments as well as just those establishments subject to the Texas Unemployment Compensation Act. Average weekly wages are not to be confused with "prevailing" wage rates in various industries.

Industry Classification

Since the release of first quarter 2001 data, industry information has been provided under the newer North American Industry Classification System (NAICS). Beginning with first quarter 2007 data, the Texas Workforce Commission (TWC) will release Quarterly Census of Employment and Wage (QCEW) data using the NAICS 2007 revision. The purpose of this revision is to keep up with new and emerging technology industries. This revision is minor in the scope of the QCEW data set, as 12 NAICS 2002 codes will become obsolete, and 6 NAICS 2007 codes will be established. Because there are no plans for historical reconstruction of the data series, a series break will occur, canceling the ability for a time series analysis for those selected industries. For more information on the new NAICS 2007 code changes, see the following web link: <http://www.census.gov/epcd/www/naics.html>.

Definition of covered employment, wages, and average weekly wage

Covered employment is the number of workers employed by employers subject to the Texas Unemployment Compensation Act during the pay period which included the 12th day of the month. Excluded from coverage are employment covered by the Railroad Retirement Act, self-employed, and unpaid family members.

The payroll data (total wages) used in this publication includes all wages and salaries paid to covered employees by their employers including bonuses, commissions, and cash values or remuneration received in any medium other than cash.

The average weekly wage is the numeric calculation of total wages for the county divided by the number of employees in the county, divided by the number 13 (the weeks in a quarter). This figure is listed in Table 3 for those establishments that are covered by the Texas Unemployment Compensation Act, and for all employers (those covered plus Federal Government employment).

NAICS Industry Structure

The NAICS industry hierarchy classifies data to the six-digit level. The first level consists of the Goods-Producing and Service-Providing industries. Below this is the Super Sector level. The third layer is the Sector level. Statewide data is published at both the Super Sector and Sector levels. Data for the 254 Texas counties are published at the Super Sector level only.

NAICS Sector Aggregation Tree

	SUPER SECTOR	SECTOR	
Total Employment	Goods-Producing Industries	(A) Natural Resources & Mining Group	Sector 11 - Agriculture, Forestry, Fishing and Hunting
			Sector 21 - Mining
		(B) Construction	Sector 23 - Construction
		(C) Manufacturing	Sector 31-33 - Manufacturing
		(D) Trade, Transportation, and Utilities Group	Sector 22 - Utilities
			Sector 42 - Wholesale Trade
			Sector 44-45 - Retail Trade
			Sector 48-49 - Transportation and Warehousing
		(E) Information	Sector 51 - Information
		Service-Providing Industries	(F) Financial Activities Group
	Sector 53 - Real Estate, Rental and Leasing		
	(G) Professional and Business Svcs. Group		Sector 54 - Professional, Scientific and Technical Services
			Sector 55 - Management of Companies and Enterprises
			Sector 56 - Administrative and Support, Waste Mgmt. and Remediation Svcs.
(H) Education & Health Services Group	Sector 61 - Educational Services		
	Sector 62 - Health Care and Social Assistance		
(I) Leisure & Hospitality Group	Sector 71 - Arts, Entertainment, and Recreation		
	Sector 72 - Accommodations and Food Services		
(J) Other Services	Sector 81 - Other Services (ex. Public Adm.)		
(K) Public Administration	Sector 92 - Public Administration		
(L) Unclassified	Sector 99 - Unclassified Establishments		

**Table 1. State Summary
Employment and Total Payrolls by Industry
First Quarter 2009**

Industry Group	Industry Code	UI Accounts	Reporting Units	Employment Month 1	Employment Month 2	Employment Month 3	Qtr. Average Employment	Total Wages	Average Weekly Wage
Agriculture, Forestry, Fishing & Hunting	11	9,162	9,365	57,619	56,380	57,341	57,113	\$381,834,406	\$514.27
Crop Production	111	3,778	3,808	19,903	20,280	20,844	20,342	\$118,838,441	\$449.38
Animal Production	112	3,588	3,653	22,726	22,585	22,720	22,677	\$159,774,329	\$541.97
Forestry and Logging	113	301	309	1,991	1,984	1,969	1,981	\$18,912,473	\$734.26
Fishing, Hunting and Trapping	114	132	132	402	398	390	397	\$2,627,794	\$509.59
Agriculture & Forestry Support Activity	115	1,375	1,463	12,597	11,133	11,418	11,716	\$81,681,369	\$536.29
Mining, Quarrying, and Oil and Gas Extraction	21	6,851	8,530	226,214	220,257	214,504	220,325	\$6,580,134,027	\$2,297.35
Oil and Gas Extraction	211	3,322	4,087	84,692	84,626	84,537	84,618	\$3,722,768,253	\$3,384.22
Mining (except Oil and Gas)	212	305	412	10,188	10,164	10,197	10,183	\$143,626,479	\$1,084.96
Support Activities for Mining	213	3,262	4,031	131,334	125,467	119,770	125,524	\$2,713,739,295	\$1,663.03
Utilities	22	1,043	1,847	47,331	47,415	47,542	47,429	\$1,289,728,703	\$2,091.74
Utilities	221	1,043	1,847	47,331	47,415	47,542	47,429	\$1,289,728,703	\$2,091.74
Construction	23	41,878	44,945	630,435	625,668	618,829	624,977	\$7,397,067,131	\$910.44
Construction of Buildings	236	11,498	12,427	149,952	147,324	145,423	147,566	\$2,228,852,461	\$1,161.85
Heavy and Civil Engineering Construction	237	4,060	4,432	122,930	122,578	119,391	121,633	\$1,683,608,544	\$1,064.75
Specialty Trade Contractors	238	26,476	28,086	357,553	355,766	354,015	355,778	\$3,484,606,126	\$753.41
Manufacturing	31-33	20,220	23,492	889,406	878,357	865,338	877,700	\$13,477,049,919	\$1,181.15
Food Manufacturing	311	1,522	1,758	88,373	87,260	87,213	87,615	\$778,354,233	\$683.37
Beverage & Tobacco Product Manufacturing	312	187	262	11,166	11,158	11,183	11,169	\$153,216,727	\$1,055.23
Textile Mills	313	106	108	2,826	2,771	2,674	2,757	\$21,589,672	\$602.37
Textile Product Mills	314	495	509	6,698	6,533	6,435	6,555	\$40,457,895	\$474.75
Apparel Manufacturing	315	280	285	5,165	5,065	5,058	5,096	\$35,513,977	\$536.08
Leather and Allied Product Manufacturing	316	148	155	4,071	4,001	3,908	3,993	\$27,313,211	\$526.13
Wood Product Manufacturing	321	702	809	22,367	21,900	21,535	21,934	\$196,228,717	\$688.18
Paper Manufacturing	322	250	324	18,616	18,518	18,438	18,524	\$239,561,537	\$994.81
Printing and Related Support Activities	323	2,127	2,286	30,919	30,537	30,222	30,559	\$319,787,845	\$804.96
Petroleum & Coal Products Manufacturing	324	184	275	24,568	25,690	24,651	24,970	\$726,910,820	\$2,239.37
Chemical Manufacturing	325	1,038	1,386	75,247	74,960	74,170	74,792	\$1,766,439,397	\$1,816.76

**Table 1. State Summary
Employment and Total Payrolls by Industry**

First Quarter 2009

Industry Group	Industry Code	UI Accounts	Reporting Units	Employment Month 1	Employment Month 2	Employment Month 3	Qtr. Average Employment	Total Wages	Average Weekly Wage
Plastics & Rubber Products Manufacturing	326	744	853	40,324	39,784	39,363	39,824	\$433,412,202	\$837.18
Nonmetallic Mineral Product Mfg	327	869	1,222	37,870	37,348	36,888	37,369	\$411,339,980	\$846.74
Primary Metal Manufacturing	331	386	428	23,228	22,457	21,301	22,329	\$294,894,420	\$1,015.92
Fabricated Metal Product Manufacturing	332	4,310	4,718	130,823	127,898	124,844	127,855	\$1,556,026,121	\$936.17
Machinery Manufacturing	333	1,824	2,111	96,990	95,302	93,058	95,117	\$1,720,746,089	\$1,391.61
Computer and Electronic Product Mfg	334	1,180	1,376	106,402	104,833	103,529	104,921	\$2,484,118,555	\$1,821.23
Electrical Equipment and Appliances	335	417	463	19,512	19,293	19,043	19,283	\$247,523,164	\$987.43
Transportation Equipment Manufacturing	336	898	1,021	89,015	88,626	87,707	88,449	\$1,509,774,183	\$1,313.03
Furniture and Related Product Mfg	337	1,143	1,181	26,023	25,580	25,431	25,678	\$213,939,064	\$640.89
Miscellaneous Manufacturing	339	1,895	1,962	29,203	28,843	28,687	28,911	\$299,902,110	\$797.95
Wholesale Trade	42	35,231	41,835	513,949	508,679	505,291	509,306	\$8,497,231,395	\$1,283.38
Merchant Wholesalers, Durable Goods	423	15,968	19,871	296,755	291,694	289,076	292,508	\$4,976,836,863	\$1,308.80
Merchant Wholesalers, Nondurable Goods	424	7,267	9,176	158,402	158,360	157,940	158,234	\$2,395,590,423	\$1,164.58
Electronic Markets and Agents/Brokers	425	12,178	12,788	58,792	58,625	58,275	58,564	\$1,124,804,109	\$1,477.42
Retail Trade	44-45	42,627	70,490	1,150,715	1,134,945	1,136,078	1,140,579	\$7,436,674,221	\$501.55
Motor Vehicle and Parts Dealers	441	6,579	9,118	143,868	143,112	142,928	143,303	\$1,415,359,937	\$759.75
Furniture and Home Furnishings Stores	442	2,598	3,686	40,538	39,509	38,929	39,659	\$313,871,301	\$608.79
Electronics and Appliance Stores	443	2,161	3,423	42,903	40,871	38,953	40,909	\$398,021,270	\$748.42
Building Material & Garden Supply Stores	444	3,137	4,971	91,011	92,129	94,511	92,550	\$723,809,832	\$601.59
Food and Beverage Stores	445	6,282	8,292	202,825	203,152	202,886	202,954	\$1,050,057,436	\$397.99
Health and Personal Care Stores	446	3,075	6,609	63,402	63,745	63,604	63,584	\$562,108,015	\$680.03
Gasoline Stations	447	5,063	8,632	68,359	68,465	68,861	68,562	\$316,799,401	\$355.43
Clothing and Clothing Accessories Stores	448	4,111	9,215	113,808	108,620	108,638	110,355	\$491,652,400	\$342.71
Sporting Goods/Hobby/Book/Music Stores	451	1,898	3,227	41,364	39,145	38,658	39,722	\$180,786,393	\$350.10
General Merchandise Stores	452	697	4,214	264,639	258,977	261,621	261,746	\$1,439,228,358	\$422.97
Miscellaneous Store Retailers	453	5,704	7,271	57,794	57,262	56,750	57,269	\$331,359,989	\$445.08
Nonstore Retailers	454	1,648	1,832	20,204	19,958	19,739	19,967	\$213,619,889	\$822.97
Transportation and Warehousing	48-49	12,982	15,747	370,108	365,292	364,830	366,743	\$4,462,534,733	\$936.00
Air Transportation	481	374	484	64,634	64,605	64,694	64,644	\$971,263,681	\$1,155.75
Rail Transportation	482	9	9	93	96	95	95	\$1,358,771	\$1,104.09

**Table 1. State Summary
Employment and Total Payrolls by Industry
First Quarter 2009**

Industry Group	Industry Code	UI Accounts	Reporting Units	Employment Month 1	Employment Month 2	Employment Month 3	Qtr. Average Employment	Total Wages	Average Weekly Wage
Water Transportation	483	144	154	5,183	5,240	5,122	5,182	\$115,786,727	\$1,718.88
Truck Transportation	484	6,742	7,640	113,006	110,940	110,380	111,442	\$1,111,063,577	\$766.91
Transit and Ground Passenger Transport	485	490	666	17,868	17,863	18,061	17,931	\$111,656,172	\$479.01
Pipeline Transportation	486	146	598	13,405	13,430	13,473	13,436	\$557,599,288	\$3,192.34
Scenic and Sightseeing Transportation	487	93	93	569	570	617	585	\$2,839,783	\$373.20
Support Activities for Transportation	488	3,279	3,702	69,848	68,300	68,371	68,840	\$810,203,487	\$905.34
Postal Service	491	63	65	310	298	291	300	\$1,722,404	\$442.13
Couriers and Messengers	492	850	1,133	37,524	36,759	36,490	36,924	\$326,057,954	\$679.26
Warehousing and Storage	493	915	1,203	47,668	47,191	47,236	47,365	\$452,982,889	\$735.67
Information	51	5,735	9,986	211,958	210,850	209,854	210,887	\$3,792,992,131	\$1,383.53
Publishing Industries	511	1,971	2,286	45,402	45,167	45,122	45,230	\$803,476,740	\$1,366.47
Motion Picture & Sound Recording Ind	512	884	1,068	15,733	15,710	16,152	15,865	\$113,152,750	\$548.63
Broadcasting (except Internet)	515	489	712	22,882	22,684	22,463	22,676	\$304,158,064	\$1,031.77
Telecommunications	517	1,269	4,232	95,570	95,296	94,610	95,159	\$1,869,240,312	\$1,511.03
Data Processing, Hosting and Related Services	518	686	1,128	27,455	27,090	26,823	27,123	\$639,665,222	\$1,814.17
Other Information Services	519	519	560	4,916	4,903	4,684	4,834	\$63,299,043	\$1,007.20
Finance and Insurance	52	20,471	34,607	448,630	448,602	447,400	448,211	\$8,202,872,246	\$1,407.80
Monetary Authorities-Central Bank	521	30	46	1,848	1,845	1,852	1,848	\$35,155,716	\$1,463.09
Credit Intermediation & Related Activity	522	4,521	13,225	237,548	237,352	237,014	237,305	\$3,542,856,913	\$1,148.43
Financial Investment & Related Activity	523	4,742	7,129	49,236	49,191	48,602	49,010	\$1,663,850,329	\$2,611.49
Insurance Carriers & Related Activities	524	10,808	13,642	152,229	152,386	152,170	152,262	\$2,690,276,708	\$1,359.14
Funds, Trusts & Other Financial Vehicles	525	520	565	7,769	7,828	7,762	7,786	\$270,732,580	\$2,674.63
Real Estate and Rental and Leasing	53	18,381	25,544	177,722	177,140	176,706	177,189	\$2,026,055,826	\$879.57
Real Estate	531	15,551	20,118	118,033	117,886	118,208	118,042	\$1,357,587,587	\$884.68
Rental and Leasing Services	532	2,571	5,122	57,347	56,957	56,191	56,832	\$614,513,290	\$831.76
Lessors, Nonfinancial Intangible Assets	533	300	304	2,342	2,297	2,307	2,315	\$53,954,949	\$1,792.56
Professional and Technical Services	54	61,508	67,870	583,589	581,998	574,955	580,181	\$10,167,338,970	\$1,348.03
Professional and Technical Services	541	61,508	67,870	583,589	581,998	574,955	580,181	\$10,167,338,970	\$1,348.03

**Table 1. State Summary
Employment and Total Payrolls by Industry
First Quarter 2009**

Industry Group	Industry Code	UI Accounts	Reporting Units	Employment Month 1	Employment Month 2	Employment Month 3	Qtr. Average Employment	Total Wages	Average Weekly Wage
Management of Companies and Enterprises	55	1,817	2,248	77,740	77,227	76,765	77,244	\$1,974,164,085	\$1,965.96
Management of Companies and Enterprises	551	1,817	2,248	77,740	77,227	76,765	77,244	\$1,974,164,085	\$1,965.96
Administrative and Waste Services	56	24,981	29,625	625,564	622,738	624,750	624,351	\$5,596,586,152	\$689.53
Administrative and Support Services	561	23,862	28,222	599,733	597,090	599,039	598,621	\$5,237,695,246	\$673.05
Waste Management and Remediation Service	562	1,145	1,403	25,831	25,648	25,711	25,730	\$358,890,906	\$1,072.95
Educational Services	61	4,652	5,087	110,769	114,874	116,199	113,947	\$1,087,155,961	\$733.91
Educational Services	611	4,652	5,087	110,769	114,874	116,199	113,947	\$1,087,155,961	\$733.91
Health Care and Social Assistance	62	44,503	52,621	1,098,533	1,106,036	1,110,292	1,104,954	\$10,542,035,969	\$733.90
Ambulatory Health Care Services	621	35,761	40,221	535,184	538,900	541,113	538,399	\$5,556,846,457	\$793.93
Hospitals	622	540	714	275,888	277,274	277,967	277,043	\$3,361,310,472	\$933.29
Nursing and Residential Care Facilities	623	2,080	3,214	158,550	159,635	160,220	159,468	\$986,225,079	\$475.73
Social Assistance	624	6,293	8,472	128,911	130,227	130,992	130,043	\$637,653,961	\$377.18
Arts, Entertainment, and Recreation	71	5,421	5,887	94,836	98,453	102,992	98,760	\$798,826,618	\$622.20
Performing Arts and Spectator Sports	711	1,707	1,737	18,776	18,969	20,694	19,480	\$423,067,361	\$1,670.65
Museums, Parks and Historical Sites	712	255	270	7,209	7,388	7,665	7,421	\$49,571,391	\$513.86
Amusement, Gambling & Recreation Ind	713	3,473	3,880	68,851	72,096	74,633	71,860	\$326,187,866	\$349.17
Accommodation and Food Services	72	29,177	40,837	876,563	885,876	899,657	887,365	\$3,506,333,057	\$303.95
Accommodation	721	3,810	4,712	98,285	99,113	100,150	99,183	\$591,753,770	\$458.95
Food Services and Drinking Places	722	25,396	36,125	778,278	786,763	799,507	788,183	\$2,914,579,287	\$284.45
Other Services, Ex. Public Admin	81	49,827	53,678	287,712	289,464	289,624	288,933	\$2,069,058,339	\$550.85
Repair and Maintenance	811	14,184	15,176	106,384	106,673	106,371	106,476	\$957,168,668	\$691.50
Personal and Laundry Services	812	9,168	11,198	93,582	94,230	94,538	94,117	\$522,113,096	\$426.73
Membership Organizations & Associations	813	5,004	5,735	56,643	57,386	57,403	57,144	\$448,599,361	\$603.87
Private Households	814	21,564	21,569	31,103	31,175	31,312	31,197	\$141,177,214	\$348.11
Unclassified	99	3,392	3,403	5,072	5,925	6,633	5,877	\$56,743,544	\$742.75

**Table 1. State Summary
Employment and Total Payrolls by Industry
First Quarter 2009**

Industry Group	Industry Code	UI Accounts	Reporting Units	Employment Month 1	Employment Month 2	Employment Month 3	Qtr. Average Employment	Total Wages	Average Weekly Wage
Federal Government		93	3,896	193,257	194,330	193,925	193,837	\$2,933,297,190	\$1,164.06
State Government		204	3,791	350,146	353,914	355,049	353,036	\$3,868,093,115	\$842.82
Local Government		3,917	9,522	1,229,736	1,250,421	1,253,918	1,244,692	\$11,789,267,722	\$728.59
All Industries and Federal Agencies		439,614	564,853	10,257,604	10,254,841	10,248,472	10,253,639	\$117,933,075,460	\$884.74
Industries With Texas UI Coverage Only		439,521	560,957	10,064,347	10,060,511	10,054,547	10,059,802	\$114,999,778,270	\$879.35

* Number of UI accounts does not add across industries because some UI accounts have reporting units in multiple industries.

Table 2. County Employment by Industry
First Quarter 2009

County	Total Employment	(A)	(B)	(C)	(D)	(E)	(F)	(G)	(H)	(I)	(J)	(L)	Fed	State	Local
ANDERSON	17,521	947	583	482	4,495	188	695	1,013	1,841	1,246	394	3,305	118	---	2,212
ANDREWS	5,256	1,275	552	122	778	41	330	294	140	349	157	0	16	33	1,169
ANGELINA	35,826	486	1,624	5,117	6,415	520	1,270	2,618	6,941	3,050	707	2	345	1,634	5,096
ARANSAS	5,416	241	311	51	1,310	60	253	300	528	1,122	175	0	21	100	943
ARCHER	1,986	319	144	86	551	18	53	110	86	54	57	0	22	39	449
ARMSTRONG	411	12	32	---	37	0	---	87	---	---	---	92	7	21	123
ATASCOSA	9,508	893	568	277	2,121	70	363	373	1,292	719	384	1	55	102	2,289
AUSTIN	12,235	153	1,054	3,622	2,682	80	369	559	873	656	237	11	100	386	1,454
BAILEY	2,566	538	120	121	581	112	78	57	60	207	47	4	26	32	583
BANDERA	2,862	117	280	23	498	27	116	121	266	507	103	12	19	50	724
BASTROP	14,118	361	1,002	1,148	2,789	85	506	762	1,218	1,432	398	17	392	293	3,714
BAYLOR	1,151	40	59	20	192	---	64	31	313	91	50	10	22	39	220
BEE	8,377	477	200	138	1,512	85	251	240	973	743	215	1,771	45	---	1,729
BELL	102,806	278	4,238	6,921	19,615	2,307	4,359	8,344	15,224	9,909	3,086	19	9,519	1,091	17,897
BEXAR	712,993	3,480	39,479	33,915	119,792	19,552	60,340	95,221	101,471	86,138	21,167	247	30,352	17,427	84,412
BLANCO	2,672	229	383	75	424	14	135	408	134	229	63	2	67	64	444
BORDEN	125	19	0	0	6	0	0	---	0	0	---	5	2	22	71
BOSQUE	3,693	80	228	514	689	23	171	141	418	195	82	1	79	51	1,020
BOWIE	43,332	153	1,371	2,425	9,242	521	2,149	2,785	7,827	4,102	1,045	17	5,232	1,314	5,151
BRAZORIA	85,827	1,193	11,290	12,396	16,649	621	3,196	5,629	6,848	7,684	2,604	42	495	2,891	14,288
BRAZOS	85,747	2,111	4,305	4,843	11,555	1,186	3,099	6,034	8,880	9,487	2,156	29	864	23,009	8,187
BREWSTER	4,613	113	154	79	1,058	114	203	177	376	691	84	843	262	---	457
BRISCOE	353	55	18	---	52	---	22	---	---	29	5	45	14	29	84
BROOKS	2,619	323	57	0	318	8	73	165	419	331	81	0	248	41	555
BROWN	15,628	134	488	3,088	2,726	167	527	459	3,437	1,271	360	3	116	903	1,947
BURLESON	3,609	539	287	255	738	11	155	125	179	303	99	0	53	57	810
BURNET	12,217	142	1,034	977	2,699	218	577	896	1,210	1,588	313	12	84	288	2,178
CALDWELL	6,748	317	229	283	1,478	29	277	356	1,191	631	171	0	56	127	1,602
CALHOUN	9,824	321	1,822	2,886	1,087	48	268	654	376	720	121	0	40	70	1,411
CALLAHAN	2,357	131	---	140	437	---	103	37	178	203	52	356	42	42	636
CAMERON	122,863	676	3,732	6,423	23,266	2,025	5,092	8,547	28,775	11,703	2,935	43	2,636	4,516	22,493
CAMP	4,178	---	224	169	1,031	---	300	111	464	288	69	1,469	32	21	---
CARSON	4,794	140	105	---	283	10	35	52	---	47	100	3,351	239	42	391
CASS	7,603	261	293	1,325	1,263	21	308	289	1,073	527	189	0	71	230	1,754
CASTRO	2,475	740	47	52	442	6	76	45	206	83	122	0	22	28	607
CHAMBERS	10,172	461	612	1,878	1,896	---	839	857	398	949	386	23	55	44	1,773
CHEROKEE	14,909	958	594	2,343	2,317	105	523	588	1,974	1,141	187	14	76	1,937	2,151

(A) - Natural Resources and Mining	(D) - Trade, Transportation Utilities	(G) - Professional Business Services	(J) - Other Services
(B) - Construction	(E) - Information	(H) - Education Health Services	(L) - Unclassified
(C) - Manufacturing	(F) - Financial Activities	(I) - Leisure Hospitality	

Table 2. County Employment by Industry
First Quarter 2009

County	Total Employment	(A)	(B)	(C)	(D)	(E)	(F)	(G)	(H)	(I)	(J)	(L)	Fed	State	Local
CHILDRESS	2,480	61	64	---	520	31	81	45	187	285	41	9	27	483	647
CLAY	1,846	90	120	195	475	---	64	36	183	52	35	4	30	39	521
COCHRAN	787	125	---	0	176	---	21	---	93	11	8	13	15	27	299
COKE	797	29	150	---	103	7	36	12	30	50	19	7	18	22	314
COLEMAN	2,198	43	170	95	449	26	113	41	274	174	39	3	46	34	690
COLLIN	282,768	1,453	13,015	21,541	51,392	18,372	25,344	46,015	28,670	29,824	7,682	4,607	1,374	---	33,480
COLLINGSWORTH	851	78	9	---	117	---	33	52	186	58	28	8	19	24	239
COLORADO	6,431	354	472	994	1,406	40	255	237	862	628	198	0	65	59	862
COMAL	38,319	374	4,192	2,897	10,229	368	1,186	2,686	4,604	5,260	1,128	26	173	167	5,030
COMANCHE	3,756	600	143	177	772	97	175	121	260	217	78	8	52	34	1,022
CONCHO	872	52	4	---	98	---	32	---	79	83	10	259	32	22	201
COOKE	15,133	1,703	885	2,796	3,009	120	486	586	726	1,351	493	2	71	494	2,411
CORYELL	15,097	42	742	487	2,036	100	784	1,688	1,309	1,380	545	2,987	182	---	2,814
COTTLE	462	28	4	---	86	---	43	20	58	26	14	22	13	35	111
CRANE	1,525	547	31	33	198	0	19	50	132	133	22	0	6	22	333
CROCKETT	1,508	308	29	---	281	8	55	63	32	171	78	30	5	38	409
CROSBY	1,584	432	10	41	292	---	48	12	134	52	35	6	21	30	470
CULBERSON	1,111	97	26	---	260	---	---	12	---	243	18	100	68	35	253
DALLAM	3,553	866	225	349	776	70	127	106	54	366	95	259	20	---	240
DALLAS	1,431,498	8,252	76,672	126,945	289,746	47,359	140,421	257,209	153,053	125,577	37,663	733	27,215	18,684	121,968
DAWSON	4,318	706	150	89	807	38	134	76	297	352	118	549	52	---	951
DEAF SMITH	7,147	1,149	392	1,265	1,514	99	248	168	273	456	223	4	43	65	1,249
DELTA	1,247	52	17	---	121	---	32	35	612	19	13	10	19	30	286
DENTON	170,015	1,205	9,217	11,526	35,232	3,286	8,905	19,116	19,826	20,949	4,654	66	1,712	11,813	22,509
DEWITT	6,510	181	254	1,013	952	40	421	260	551	455	167	0	40	489	1,684
DICKENS	483	53	---	0	85	---	17	6	29	29	8	69	14	18	155
DIMITT	2,898	504	141	33	478	---	84	67	222	263	27	6	241	47	783
DONLEY	1,010	81	23	39	154	6	33	17	107	103	20	0	18	23	387
DUVAL	3,044	698	317	0	339	---	54	27	183	80	55	4	152	180	955
EASTLAND	6,812	520	697	643	1,149	52	269	323	944	477	190	1	54	94	1,398
ECTOR	60,991	6,837	5,657	4,273	13,550	647	2,684	3,926	5,104	6,017	2,694	15	170	1,445	7,973
EDWARDS	450	41	13	0	77	39	---	15	18	13	4	51	24	---	154
EL PASO	268,030	871	15,261	17,754	54,936	5,295	12,364	31,012	31,671	26,576	6,320	191	11,336	8,758	45,685
ELLIS	38,314	119	2,347	8,840	8,967	319	1,145	1,986	3,409	3,205	958	14	238	179	6,589
ERATH	15,597	1,192	944	1,673	2,828	104	478	614	1,555	1,928	532	4	73	2,230	1,442
FALLS	3,259	177	112	107	569	8	109	65	548	123	74	511	42	---	815
FANNIN	6,772	129	227	568	1,225	49	272	179	979	548	144	0	466	570	1,416

(A) - Natural Resources and Mining	(D) - Trade, Transportation Utilities	(G) - Professional Business Services	(J) - Other Services
(B) - Construction	(E) - Information	(H) - Education Health Services	(L) - Unclassified
(C) - Manufacturing	(F) - Financial Activities	(I) - Leisure Hospitality	

Table 2. County Employment by Industry

First Quarter 2009

County	Total Employment	(A)	(B)	(C)	(D)	(E)	(F)	(G)	(H)	(I)	(J)	(L)	Fed	State	Local
FAYETTE	8,586	767	356	951	1,730	124	563	237	1,073	918	179	3	77	94	1,515
FISHER	885	110	14	---	140	---	46	35	82	21	15	84	22	20	297
FLOYD	1,821	404	60	65	370	---	72	27	140	75	24	7	34	24	519
FOARD	354	17	---	---	60	0	---	---	76	22	10	63	10	---	96
FORT BEND	129,996	2,421	12,256	13,858	25,927	1,583	5,291	13,867	13,622	13,682	4,219	107	1,181	3,127	18,854
FRANKLIN	3,143	69	74	---	1,406	---	78	95	621	178	140	73	19	29	362
FREESTONE	5,988	639	699	189	1,096	58	206	316	550	601	153	7	34	417	1,021
FRIO	4,607	595	165	26	693	26	106	578	723	307	47	5	28	375	934
GAINES	4,599	1,318	285	56	900	49	152	52	101	267	103	12	29	34	1,242
GALVESTON	90,985	568	6,746	6,226	16,398	741	5,682	5,719	8,063	12,778	2,340	57	889	10,726	14,052
GARZA	1,660	234	144	24	217	---	41	---	---	140	38	440	14	29	338
GILLESPIE	8,845	87	882	771	2,014	108	388	403	1,485	1,301	252	7	65	88	994
GLASSCOCK	325	136	15	0	32	0	---	---	---	---	---	18	7	16	102
GOLIAD	1,515	104	37	---	357	---	38	59	161	178	44	51	21	43	421
GONZALES	6,531	1,151	100	1,046	1,359	44	259	199	477	302	147	0	75	64	1,310
GRAY	8,554	1,189	403	1,261	1,664	81	260	395	830	640	312	0	56	408	1,056
GRAYSON	41,881	241	2,272	5,255	8,988	511	2,663	2,370	7,785	4,493	867	29	355	221	5,831
GREGG	73,426	4,710	4,492	10,667	15,311	1,133	3,026	6,994	10,984	6,387	1,960	27	315	389	7,031
GRIMES	6,921	223	375	1,616	1,305	24	315	220	399	381	111	724	46	---	1,183
GUADALUPE	29,436	298	2,372	5,249	5,469	195	1,005	1,933	3,051	2,916	858	27	211	170	5,681
HALE	14,188	956	397	2,771	3,334	94	565	460	1,584	952	506	8	125	544	1,893
HALL	936	103	17	59	161	---	45	---	125	34	---	73	27	23	269
HAMILTON	2,742	225	372	177	544	26	71	56	283	211	46	0	31	85	615
HANSFORD	1,929	525	111	59	341	---	106	53	51	77	50	7	19	22	509
HARDEMAN	1,210	54	27	---	184	13	67	7	65	111	42	135	18	32	456
HARDIN	12,461	464	1,265	752	2,619	85	288	305	2,744	1,052	316	5	77	85	2,404
HARRIS	2,036,427	83,451	148,599	184,788	423,176	31,301	116,359	325,705	220,595	176,469	59,043	1,202	24,940	46,078	194,719
HARRISON	23,555	2,123	1,348	4,423	3,886	130	1,310	1,693	2,427	1,750	761	4	140	335	3,224
HARTLEY	1,647	390	116	---	297	---	32	38	47	19	19	17	8	43	621
HASKELL	2,031	204	---	19	351	21	59	163	170	116	106	351	34	40	398
HAYS	47,103	288	2,761	3,834	11,383	601	1,597	2,864	4,712	6,191	1,701	4,279	192	---	6,699
HEMPHILL	2,178	386	401	30	547	20	134	40	82	108	40	4	12	29	347
HENDERSON	15,676	302	681	1,867	3,248	144	626	1,054	2,100	1,813	393	9	103	223	3,113
HIDALGO	218,513	7,457	7,586	6,635	44,717	2,252	8,047	14,504	51,011	18,970	3,857	112	3,151	5,937	44,277
HILL	9,341	267	936	918	2,199	43	294	346	945	845	184	13	104	146	2,100
HOCKLEY	9,139	1,980	424	284	1,678	40	254	208	654	535	---	1,005	48	83	1,946
HOOD	13,180	1,141	994	583	2,711	182	697	836	1,373	1,808	606	11	105	66	2,067

(A) - Natural Resources and Mining	(D) - Trade, Transportation Utilities	(G) - Professional Business Services	(J) - Other Services
(B) - Construction	(E) - Information	(H) - Education Health Services	(L) - Unclassified
(C) - Manufacturing	(F) - Financial Activities	(I) - Leisure Hospitality	

Table 2. County Employment by Industry
First Quarter 2009

County	Total Employment	(A)	(B)	(C)	(D)	(E)	(F)	(G)	(H)	(I)	(J)	(L)	Fed	State	Local
HOPKINS	11,454	488	607	1,390	3,417	149	489	793	669	834	261	4	83	138	2,132
HOUSTON	6,135	133	200	576	1,155	84	230	318	790	314	172	0	83	1,057	1,023
HOWARD	12,323	812	605	934	1,919	68	415	677	1,775	1,135	304	726	854	---	2,098
HUDSPETH	1,061	172	---	---	78	---	10	---	---	15	9	151	302	39	284
HUNT	28,304	44	1,090	7,420	4,945	159	854	1,195	2,920	2,203	489	23	246	2,192	4,523
HUTCHINSON	8,799	907	2,027	1,079	1,290	32	226	219	473	703	213	3	72	66	1,488
IRION	550	239	33	15	59	---	---	---	11	8	23	33	4	12	113
JACK	2,949	811	446	40	403	---	163	117	132	172	18	6	18	51	571
JACKSON	5,010	243	709	---	745	100	141	162	173	280	94	1,261	32	43	1,027
JASPER	10,745	326	411	1,750	2,236	69	353	313	1,771	1,034	206	1	80	314	1,881
JEFF DAVIS	904	---	48	---	61	---	28	21	81	133	12	232	19	138	131
JEFFERSON	124,982	797	15,984	15,518	23,520	1,576	4,410	13,106	16,673	11,873	3,180	22	1,900	4,976	11,448
JIM HOGG	1,967	157	37	49	248	10	80	---	593	82	36	1	257	44	371
JIM WELLS	17,496	3,542	379	406	3,535	74	864	489	4,144	1,413	313	2	91	138	2,107
JOHNSON	40,259	2,253	3,406	5,222	9,495	498	1,388	2,030	4,215	3,430	1,014	58	254	229	6,767
JONES	4,036	357	182	538	628	19	176	128	324	164	69	0	87	89	1,276
KARNES	3,750	145	89	246	670	---	113	218	276	237	64	735	40	---	916
KAUFMAN	26,029	73	1,865	3,726	5,718	110	910	1,719	2,438	2,533	640	1,088	195	---	5,014
KENDALL	10,692	83	1,102	849	2,244	111	615	848	1,186	1,244	479	10	58	72	1,791
KENEDY	427	294	---	0	---	0	0	6	---	11	16	94	3	4	---
KENT	288	19	0	0	34	0	---	---	23	---	---	14	9	21	169
KERR	17,415	122	1,407	828	3,286	257	806	1,304	3,320	2,083	729	3	520	731	2,019
KIMBLE	1,456	25	150	105	331	---	47	38	145	283	31	4	16	50	232
KING	181	---	0	0	1	---	0	---	0	---	0	111	3	11	55
KINNEY	748	42	---	---	129	---	---	---	---	83	10	75	127	30	251
KLEBERG	12,656	734	374	222	1,772	91	463	610	2,144	1,279	267	2,103	827	---	1,772
KNOX	1,277	278	69	---	265	4	43	7	109	54	29	19	28	30	343
LA SALLE	1,615	394	14	0	127	---	32	---	62	118	34	144	105	161	424
LAMAR	19,541	72	1,310	3,957	3,591	172	882	1,091	3,136	1,725	395	10	152	280	2,766
LAMB	4,478	831	124	---	810	---	181	220	312	186	74	703	40	47	952
LAMPASAS	4,790	53	678	655	869	38	182	228	451	463	164	0	51	93	864
LAVACA	5,940	223	248	1,308	1,516	45	225	70	858	275	204	0	54	62	851
LEE	5,525	460	970	473	1,086	27	283	163	259	337	109	533	34	---	793
LEON	6,064	711	1,246	471	1,135	15	212	166	103	916	157	0	47	55	831
LIBERTY	17,127	841	1,009	1,570	4,044	102	626	694	1,969	1,412	326	7	131	1,049	3,348
LIMESTONE	8,629	265	184	958	1,237	40	300	---	1,041	468	172	2,526	48	---	1,390
LIPSCOMB	1,166	173	24	---	182	---	26	---	9	---	14	321	25	---	392

(A) - Natural Resources and Mining	(D) - Trade, Transportation Utilities	(G) - Professional Business Services	(J) - Other Services
(B) - Construction	(E) - Information	(H) - Education Health Services	(L) - Unclassified
(C) - Manufacturing	(F) - Financial Activities	(I) - Leisure Hospitality	

Table 2. County Employment by Industry
First Quarter 2009

County	Total Employment	(A)	(B)	(C)	(D)	(E)	(F)	(G)	(H)	(I)	(J)	(L)	Fed	State	Local
LIVE OAK	2,848	273	103	---	560	12	132	50	168	291	79	309	286	33	552
LLANO	4,320	35	356	123	790	26	235	156	223	1,106	108	3	29	38	1,092
LOVING	47	---	0	---	---	0	---	---	0	0	0	46	1	---	---
LUBBOCK	124,002	1,174	5,970	5,025	25,024	4,791	6,917	9,882	19,168	15,887	3,999	15	1,285	10,515	14,351
LYNN	1,359	299	30	---	206	53	58	14	27	39	58	24	27	27	498
MADISON	3,876	---	195	79	619	14	119	139	292	417	102	1,298	23	---	580
MARION	1,988	28	11	331	358	---	40	55	470	176	32	6	33	43	406
MARTIN	1,279	134	137	---	267	---	35	18	130	54	28	60	17	26	372
MASON	1,100	76	40	18	193	---	57	104	161	107	30	12	20	29	252
MATAGORDA	10,815	685	341	445	3,137	75	409	678	942	1,092	409	9	94	111	2,388
MAVERICK	15,919	241	186	526	3,446	84	478	363	3,915	1,056	134	2	869	174	4,446
MCCULLOCH	2,939	208	80	437	793	28	102	119	236	213	56	0	31	41	597
MCLENNAN	101,209	322	6,111	14,779	17,651	1,578	6,208	8,340	16,022	9,480	2,873	41	3,900	2,672	11,233
MCMULLEN	218	47	0	0	---	0	7	---	---	---	0	43	5	28	88
MEDINA	8,107	261	507	259	1,529	70	402	415	613	872	185	2	58	566	2,367
MENARD	510	37	29	0	95	---	32	26	25	36	---	8	11	11	200
MIDLAND	67,751	12,671	3,264	2,803	12,834	1,202	3,687	7,494	5,624	6,921	2,192	32	613	533	7,881
MILAM	5,848	216	686	467	1,123	55	245	390	857	365	167	12	55	57	1,152
MILLS	1,485	139	37	68	292	---	59	43	277	42	28	81	21	26	373
MITCHELL	2,302	176	120	23	355	12	41	71	146	127	19	508	27	---	677
MONTAGUE	5,186	510	256	350	1,188	25	229	168	390	485	126	3	57	56	1,343
MONTGOMERY	126,631	3,543	9,736	9,652	26,860	924	5,657	14,669	12,774	15,768	4,782	94	731	437	21,004
MOORE	9,765	518	609	---	1,524	56	189	319	265	572	235	3,863	72	57	1,486
MORRIS	4,655	106	72	2,046	761	37	147	103	376	181	95	5	24	47	655
MOTLEY	365	59	21	24	59	0	---	---	39	24	11	4	14	21	90
NACOGDOCHES	23,391	474	1,150	3,270	3,641	140	786	2,616	2,759	2,724	474	1,801	155	---	3,401
NAVARRO	15,560	313	562	2,690	3,312	70	580	902	2,077	978	346	6	104	476	3,144
NEWTON	1,861	119	66	155	232	---	11	238	350	33	5	2	26	35	591
NOLAN	6,174	356	236	840	1,317	44	175	261	315	622	183	375	48	---	1,401
NUECES	153,517	4,251	14,220	8,743	27,654	2,144	6,822	14,638	24,829	16,760	4,773	65	6,310	5,200	17,107
OCHILTREE	4,580	1,617	292	44	945	44	136	135	166	302	133	0	26	28	712
OLDHAM	715	85	---	13	64	---	---	---	---	48	7	296	10	23	170
ORANGE	22,401	361	1,489	5,015	4,476	142	887	945	1,671	2,295	574	15	111	390	4,032
PALO PINTO	8,382	777	378	1,380	1,677	38	280	317	534	873	213	1	46	137	1,731
PANOLA	8,714	1,136	1,560	994	1,683	49	221	466	732	399	163	0	78	61	1,171
PARKER	25,796	1,235	1,963	2,369	5,898	287	812	1,778	2,669	2,861	791	17	192	166	4,759
PARMER	4,935	879	114	---	465	32	82	211	109	58	83	2,028	54	24	796

(A) - Natural Resources and Mining	(D) - Trade, Transportation Utilities	(G) - Professional Business Services	(J) - Other Services
(B) - Construction	(E) - Information	(H) - Education Health Services	(L) - Unclassified
(C) - Manufacturing	(F) - Financial Activities	(I) - Leisure Hospitality	

Table 2. County Employment by Industry
First Quarter 2009

County	Total Employment	(A)	(B)	(C)	(D)	(E)	(F)	(G)	(H)	(I)	(J)	(L)	Fed	State	Local
PECOS	5,744	1,495	192	31	967	36	212	102	213	601	76	1	55	499	1,263
POLK	10,675	218	408	---	2,168	196	409	636	1,095	1,035	304	1,165	75	876	2,090
POTTER	75,910	931	3,774	8,081	14,786	1,053	4,561	6,067	12,153	7,750	2,302	11	2,034	2,941	9,466
PRESIDIO	1,995	---	58	7	266	---	54	63	83	181	15	379	296	83	511
RAINS	1,766	25	153	82	408	---	53	206	125	160	62	12	22	31	425
RANDALL	28,013	315	1,995	1,469	7,289	529	2,141	2,161	2,703	3,435	1,068	2	73	1,748	3,087
REAGAN	1,758	484	56	0	716	---	23	21	11	43	50	2	13	12	326
REAL	689	16	38	18	87	0	22	24	135	85	5	0	5	24	228
RED RIVER	2,817	109	114	481	323	15	92	17	690	95	29	0	42	54	756
REEVES	3,892	448	48	---	711	30	159	64	279	389	74	147	89	80	1,377
REFUGIO	2,217	344	174	---	288	---	163	28	178	229	95	6	50	29	634
ROBERTS	326	123	11	0	57	---	---	---	0	---	---	32	8	2	93
ROBERTSON	3,733	247	153	397	741	7	136	81	377	368	122	9	51	54	991
ROCKWALL	20,242	39	1,398	1,225	4,317	180	806	1,716	3,112	3,110	745	6	110	59	3,419
RUNNELS	2,921	165	125	647	504	2	116	71	261	131	52	0	43	46	756
RUSK	14,253	1,962	1,722	1,329	2,562	126	577	940	1,471	827	287	2	91	202	2,155
SABINE	2,154	157	175	---	297	---	70	73	201	135	44	465	57	28	451
SAN AUGUSTINE	1,609	49	97	88	378	---	50	24	437	38	31	8	18	37	356
SAN JACINTO	2,128	19	142	60	373	3	79	134	140	144	42	1	28	48	916
SAN PATRICIO	18,229	824	3,216	1,819	2,593	145	500	1,148	1,284	1,977	315	0	304	166	3,937
SAN SABA	1,667	185	33	45	387	---	45	34	88	250	64	8	23	157	347
SCHLEICHER	870	190	109	---	171	---	22	9	57	---	10	38	12	6	247
SCURRY	6,406	1,320	413	135	1,140	57	275	269	305	618	256	4	42	339	1,235
SHACKELFORD	1,120	353	25	27	158	12	57	36	114	81	14	0	15	21	207
SHELBY	8,101	698	439	2,353	1,569	35	307	174	620	360	137	0	80	52	1,276
SHERMAN	797	209	11	---	98	---	34	41	21	18	16	26	11	18	293
SMITH	92,693	2,868	4,067	7,473	18,855	2,216	3,971	8,553	19,257	9,236	3,188	10	903	2,956	9,142
SOMERVELL	4,978	199	---	74	1,272	---	80	444	448	448	114	1,183	16	31	669
STARR	13,847	217	136	83	1,867	51	276	148	4,555	672	340	17	572	158	4,756
STEPHENS	3,282	397	344	431	522	7	168	109	264	185	67	0	21	194	573
STERLING	559	190	10	---	63	0	---	21	---	---	32	74	3	18	149
STONEWALL	547	79	50	---	69	0	16	---	26	21	28	5	14	19	219
SUTTON	2,911	1,030	181	---	742	8	76	38	40	201	64	77	8	45	402
SWISHER	2,031	305	35	145	393	---	62	46	80	140	38	27	32	155	574
TARRANT	753,420	7,734	41,478	82,411	179,098	14,893	46,898	89,473	85,516	78,304	22,386	263	14,195	10,302	80,468
TAYLOR	57,591	1,491	3,171	2,298	11,149	1,098	3,330	4,570	11,188	6,726	1,757	14	1,199	3,238	6,362
TERRELL	285	40	0	0	15	0	---	5	---	10	---	32	45	26	111

(A) - Natural Resources and Mining

(D) - Trade, Transportation Utilities

(G) - Professional Business Services

(J) - Other Services

(B) - Construction

(E) - Information

(H) - Education Health Services

(L) - Unclassified

(C) - Manufacturing

(F) - Financial Activities

(I) - Leisure Hospitality

Table 2. County Employment by Industry
First Quarter 2009

County	Total Employment	(A)	(B)	(C)	(D)	(E)	(F)	(G)	(H)	(I)	(J)	(L)	Fed	State	Local
TERRY	3,986	878	69	202	719	28	124	237	169	320	83	10	32	199	916
THROCKMORTON	490	97	8	---	60	---	13	8	45	27	---	46	11	---	175
TITUS	16,188	454	325	6,293	2,428	126	435	488	1,131	1,182	237	2	114	149	2,824
TOM GREEN	44,238	1,348	2,011	3,527	7,908	1,380	2,120	3,469	7,150	4,693	1,411	16	1,299	2,597	5,309
TRAVIS	560,646	1,723	26,904	39,964	86,909	18,623	33,940	90,314	58,309	59,144	20,203	266	9,833	64,358	50,155
TRINITY	2,308	44	111	175	374	---	48	68	371	375	87	8	28	37	582
TYLER	4,010	338	91	174	754	29	125	62	366	228	56	643	46	---	1,100
UPSHUR	6,393	216	427	275	1,130	321	241	344	876	645	73	0	65	80	1,699
UPTON	1,413	463	163	---	226	---	15	---	36	44	---	24	6	25	412
UVALDE	8,973	699	284	387	2,133	126	298	274	926	893	256	0	213	272	2,213
VAL VERDE	16,851	111	408	---	3,616	153	701	901	2,653	1,469	227	1,647	2,074	221	2,670
VAN ZANDT	10,197	869	894	453	1,969	77	385	491	1,310	993	252	1	94	110	2,300
VICTORIA	37,740	2,834	2,418	2,999	8,227	487	1,853	2,172	5,736	3,359	1,153	2	232	265	6,003
WALKER	22,578	265	510	1,038	2,908	164	605	976	1,538	1,756	446	9	157	10,107	2,098
WALLER	13,832	234	1,081	3,101	2,513	28	264	553	910	905	134	10	60	2,269	1,769
WARD	3,665	917	175	162	641	32	148	215	126	256	61	0	19	189	724
WASHINGTON	14,586	316	677	2,768	3,005	138	804	520	1,745	1,290	298	1,073	84	---	1,869
WEBB	86,214	1,795	2,478	1,118	26,699	664	3,882	5,672	12,742	8,317	1,417	46	2,935	1,929	16,520
WHARTON	14,749	2,218	561	1,527	3,109	113	681	486	1,476	1,149	340	9	102	107	2,871
WHEELER	2,312	590	94	23	424	---	65	92	162	270	32	11	27	20	502
WICHITA	54,517	1,349	2,164	6,487	9,989	1,251	2,668	3,349	8,227	5,707	1,841	3	2,303	2,853	6,326
WILBARGER	6,977	261	94	1,023	1,009	134	211	112	314	435	130	2,070	51	---	1,132
WILLACY	3,685	369	---	60	568	---	106	258	318	273	116	358	34	90	1,135
WILLIAMSON	118,903	795	9,186	6,110	30,384	1,198	7,350	14,342	10,318	13,322	4,686	51	1,518	759	18,886
WILSON	6,399	91	516	324	1,211	68	167	230	924	547	113	5	67	58	2,079
WINKLER	2,447	733	251	---	398	---	201	13	50	110	60	9	10	27	584
WISE	19,568	2,937	1,086	1,565	4,803	130	505	1,029	2,118	1,475	429	3	115	114	3,260
WOOD	9,362	415	402	916	1,975	153	485	370	1,351	1,072	241	0	101	277	1,605
YOAKUM	3,318	1,104	264	115	574	8	86	78	32	161	55	5	18	25	793
YOUNG	6,783	912	235	1,047	1,208	147	329	187	588	519	168	12	60	70	1,303
ZAPATA	3,710	844	316	42	403	---	109	108	309	242	43	18	149	30	1,096
ZAVALA	2,821	177	70	---	212	---	43	---	683	120	81	530	11	39	857

When there was no employment reported in a county in one of the industry groups, a "0" is shown. When one employer comprises 80% or more of the employment for an industry group in a county, or there are fewer than three employers for an industry group in a county, a dash (---) is shown. The employment for that industry is included in (L) - Unclassified so as not to reveal information about individual establishments.

(A) - Natural Resources and Mining	(D) - Trade, Transportation Utilities	(G) - Professional Business Services	(J) - Other Services
(B) - Construction	(E) - Information	(H) - Education Health Services	(L) - Unclassified
(C) - Manufacturing	(F) - Financial Activities	(I) - Leisure Hospitality	

Table 3. Covered Employment and Wages for All Industries
First Quarter 2009

County	Total (Including Federal)			Total (Excluding Federal)		
	Employment	Wages	AWW*	Employment	Wages	AWW*
ANDERSON	17,521	\$163,853,163	\$719.37	17,403	\$162,527,955	\$718.39
ANDREWS	5,256	\$57,455,974	\$840.88	5,240	\$57,238,810	\$840.26
ANGELINA	35,826	\$300,064,496	\$644.28	35,481	\$295,576,576	\$640.81
ARANSAS	5,416	\$38,148,910	\$541.83	5,395	\$37,865,077	\$539.92
ARCHER	1,986	\$14,725,217	\$570.25	1,965	\$14,547,646	\$569.59
ARMSTRONG	411	\$2,901,966	\$543.13	404	\$2,842,249	\$541.17
ATASCOSA	9,508	\$73,205,609	\$592.24	9,453	\$72,635,652	\$591.05
AUSTIN	12,235	\$131,413,146	\$826.19	12,135	\$130,085,934	\$824.58
BAILEY	2,566	\$19,064,584	\$571.51	2,540	\$18,776,801	\$568.65
BANDERA	2,862	\$18,899,506	\$508.03	2,843	\$18,710,442	\$506.25
BASTROP	14,118	\$112,934,763	\$615.33	13,726	\$107,558,587	\$602.76
BAYLOR	1,151	\$7,612,057	\$508.73	1,129	\$7,380,807	\$502.88
BEE	8,377	\$61,842,548	\$567.86	8,332	\$61,409,433	\$566.92
BELL	102,806	\$906,308,737	\$678.13	93,287	\$802,035,108	\$661.35
BEXAR	712,993	\$7,205,044,223	\$777.34	682,641	\$6,776,939,142	\$763.66
BLANCO	2,672	\$21,240,478	\$611.48	2,605	\$20,520,315	\$606.02
BORDEN	125	\$867,477	\$533.83	123	\$855,766	\$535.19
BOSQUE	3,693	\$28,056,500	\$584.35	3,614	\$27,154,986	\$577.99
BOWIE	43,332	\$365,216,327	\$648.33	38,101	\$295,065,949	\$595.72
BRAZORIA	85,827	\$915,228,072	\$820.28	85,332	\$909,054,053	\$819.47
BRAZOS	85,747	\$715,927,464	\$642.25	84,883	\$703,887,537	\$637.88
BREWSTER	4,613	\$32,528,879	\$542.43	4,351	\$28,766,783	\$508.62
BRISCOE	353	\$2,006,860	\$436.91	340	\$1,895,650	\$429.30
BROOKS	2,619	\$20,341,132	\$597.37	2,371	\$15,754,884	\$511.07
BROWN	15,628	\$113,441,124	\$558.37	15,512	\$112,167,055	\$556.24
BURLESON	3,609	\$31,575,418	\$673.01	3,556	\$30,996,207	\$670.44
BURNET	12,217	\$99,783,157	\$628.27	12,133	\$98,671,327	\$625.59
CALDWELL	6,748	\$46,828,167	\$533.84	6,692	\$46,191,993	\$530.97
CALHOUN	9,824	\$115,687,667	\$905.85	9,784	\$115,307,676	\$906.59
CALLAHAN	2,357	\$18,427,754	\$601.41	2,315	\$17,893,033	\$594.55
CAMERON	122,863	\$841,089,158	\$526.60	120,227	\$796,163,437	\$509.40
CAMP	4,178	\$32,394,476	\$596.38	4,147	\$32,057,386	\$594.68
CARSON	4,794	\$90,504,339	\$1,452.31	4,555	\$84,983,514	\$1,435.17
CASS	7,603	\$57,411,799	\$580.89	7,532	\$56,702,185	\$579.12
CASTRO	2,475	\$16,717,256	\$519.57	2,453	\$16,493,771	\$517.22
CHAMBERS	10,172	\$121,835,348	\$921.35	10,117	\$121,106,625	\$920.82
CHEROKEE	14,909	\$105,882,120	\$546.31	14,832	\$105,135,616	\$545.25
CHILDRESS	2,480	\$17,833,703	\$553.08	2,453	\$17,514,917	\$549.17
CLAY	1,846	\$13,555,844	\$564.98	1,815	\$13,265,200	\$562.10
COCHRAN	787	\$5,994,981	\$585.71	772	\$5,826,284	\$580.29
COKE	797	\$6,211,884	\$599.54	779	\$6,077,710	\$599.89
COLEMAN	2,198	\$13,862,029	\$485.20	2,152	\$13,487,820	\$482.12
COLLIN	282,768	\$3,793,567,108	\$1,031.99	281,394	\$3,773,964,250	\$1,031.67
COLLINGSWORTH	851	\$5,258,990	\$475.37	832	\$5,079,962	\$469.48
COLORADO	6,431	\$52,910,621	\$632.85	6,366	\$52,230,165	\$631.09
COMAL	38,319	\$318,539,690	\$639.44	38,146	\$316,269,788	\$637.77
COMANCHE	3,756	\$24,895,738	\$509.91	3,703	\$24,345,248	\$505.68

*AWW = Average Weekly Wage

Table 3. Covered Employment and Wages for All Industries
First Quarter 2009

County	Total (Including Federal)			Total (Excluding Federal)		
	Employment	Wages	AWW*	Employment	Wages	AWW*
CONCHO	872	\$6,070,399	\$535.70	840	\$5,715,780	\$523.63
COOKE	15,133	\$136,090,233	\$691.78	15,062	\$135,328,322	\$691.13
CORYELL	15,097	\$120,003,332	\$611.45	14,915	\$118,087,208	\$609.03
COTTLE	462	\$3,409,075	\$568.02	448	\$3,262,075	\$559.69
CRANE	1,525	\$20,576,490	\$1,037.68	1,519	\$20,513,346	\$1,038.58
CROCKETT	1,508	\$10,918,587	\$556.83	1,503	\$10,852,940	\$555.33
CROSBY	1,584	\$10,112,835	\$491.00	1,563	\$9,909,531	\$487.70
CULBERSON	1,111	\$7,129,115	\$493.60	1,043	\$6,165,187	\$454.69
DALLAM	3,553	\$29,730,891	\$643.62	3,534	\$29,503,391	\$642.25
DALLAS	1,431,498	\$20,201,201,932	\$1,085.53	1,404,282	\$19,726,712,526	\$1,080.58
DAWSON	4,318	\$29,909,601	\$532.87	4,266	\$29,417,863	\$530.49
DEAF SMITH	7,147	\$55,543,245	\$597.81	7,104	\$55,022,031	\$595.79
DELTA	1,247	\$8,014,861	\$494.54	1,228	\$7,843,045	\$491.43
DENTON	170,015	\$1,653,353,026	\$748.06	168,303	\$1,629,138,416	\$744.60
DEWITT	6,510	\$50,639,865	\$598.40	6,469	\$50,250,936	\$597.50
DICKENS	483	\$3,283,610	\$522.95	469	\$3,130,568	\$513.46
DIMITT	2,898	\$22,595,203	\$599.76	2,657	\$18,262,583	\$528.79
DONLEY	1,010	\$5,744,167	\$437.63	992	\$5,557,929	\$430.98
DUVAL	3,044	\$25,642,443	\$647.92	2,892	\$23,157,606	\$615.89
EASTLAND	6,812	\$47,127,411	\$532.18	6,758	\$46,535,546	\$529.72
ECTOR	60,991	\$643,052,253	\$811.03	60,821	\$640,814,965	\$810.47
EDWARDS	450	\$3,125,318	\$534.24	426	\$2,729,995	\$493.34
EL PASO	268,030	\$2,096,962,361	\$601.82	256,694	\$1,932,835,962	\$579.21
ELLIS	38,314	\$323,066,229	\$648.61	38,076	\$320,360,363	\$647.20
ERATH	15,597	\$103,842,875	\$512.16	15,524	\$102,971,277	\$510.24
FALLS	3,259	\$22,414,565	\$529.06	3,217	\$21,987,378	\$525.70
FANNIN	6,772	\$58,323,644	\$662.50	6,306	\$44,313,303	\$540.58
FAYETTE	8,586	\$71,968,540	\$644.75	8,510	\$71,211,610	\$643.72
FISHER	885	\$6,353,781	\$552.05	863	\$6,136,947	\$546.80
FLOYD	1,821	\$12,348,814	\$521.55	1,787	\$12,000,675	\$516.58
FOARD	354	\$1,895,062	\$412.18	344	\$1,803,175	\$403.61
FORT BEND	129,996	\$1,615,544,914	\$955.97	128,815	\$1,597,358,540	\$953.88
FRANKLIN	3,143	\$23,571,356	\$576.96	3,124	\$23,385,234	\$575.88
FREESTONE	5,988	\$59,720,811	\$767.14	5,954	\$59,400,321	\$767.43
FRIO	4,607	\$32,642,017	\$544.98	4,579	\$32,409,673	\$544.45
GAINES	4,599	\$43,289,962	\$724.07	4,570	\$42,978,840	\$723.43
GALVESTON	90,985	\$1,021,398,744	\$863.54	90,096	\$1,006,815,003	\$859.61
GARZA	1,660	\$13,413,738	\$621.58	1,646	\$13,245,743	\$619.14
GILLESPIE	8,845	\$62,655,699	\$544.88	8,780	\$62,016,621	\$543.32
GLASSCOCK	325	\$2,187,881	\$517.31	318	\$2,118,742	\$511.98
GOLIAD	1,515	\$11,268,444	\$572.15	1,494	\$11,059,707	\$569.44
GONZALES	6,531	\$47,032,073	\$553.92	6,457	\$46,172,180	\$550.08
GRAY	8,554	\$97,446,389	\$876.27	8,498	\$96,733,145	\$875.62
GRAYSON	41,881	\$372,907,009	\$684.93	41,525	\$368,218,611	\$682.10
GREGG	73,426	\$706,415,822	\$740.06	73,111	\$702,078,826	\$738.69
GRIMES	6,921	\$59,458,673	\$660.85	6,875	\$58,949,260	\$659.54
GUADALUPE	29,436	\$245,098,205	\$640.51	29,225	\$242,634,429	\$638.64

*AWW = Average Weekly Wage

Table 3. Covered Employment and Wages for All Industries
First Quarter 2009

County	Total (Including Federal)			Total (Excluding Federal)		
	Employment	Wages	AWW*	Employment	Wages	AWW*
HALE	14,188	\$102,504,336	\$555.73	14,063	\$100,966,401	\$552.26
HALL	936	\$5,322,701	\$437.59	909	\$5,085,044	\$430.47
HAMILTON	2,742	\$19,127,574	\$536.53	2,711	\$18,854,142	\$534.98
HANSFORD	1,929	\$18,173,565	\$724.59	1,911	\$17,984,888	\$724.07
HARDEMAN	1,210	\$8,348,340	\$530.58	1,192	\$8,174,649	\$527.53
HARDIN	12,461	\$103,275,038	\$637.51	12,385	\$102,476,270	\$636.50
HARRIS	2,036,427	\$30,071,011,796	\$1,135.89	2,011,487	\$29,609,402,931	\$1,132.32
HARRISON	23,555	\$220,529,771	\$720.17	23,415	\$218,973,124	\$719.36
HARTLEY	1,647	\$12,270,525	\$573.21	1,638	\$12,169,350	\$571.38
HASKELL	2,031	\$14,913,170	\$564.74	1,998	\$14,602,701	\$562.30
HAYS	47,103	\$369,033,490	\$602.67	46,911	\$366,853,762	\$601.55
HEMPHILL	2,178	\$24,346,064	\$859.99	2,166	\$24,210,942	\$859.82
HENDERSON	15,676	\$113,468,787	\$556.81	15,572	\$112,447,487	\$555.46
HIDALGO	218,513	\$1,530,014,094	\$538.61	215,362	\$1,479,505,782	\$528.45
HILL	9,341	\$62,971,936	\$518.59	9,236	\$61,956,738	\$516.00
HOCKLEY	9,139	\$76,015,859	\$639.80	9,091	\$75,468,684	\$638.55
HOOD	13,180	\$103,115,069	\$601.80	13,075	\$101,949,413	\$599.79
HOPKINS	11,454	\$91,873,026	\$616.99	11,371	\$91,012,233	\$615.68
HOUSTON	6,135	\$56,996,542	\$714.68	6,052	\$56,040,876	\$712.30
HOWARD	12,323	\$107,548,287	\$671.34	11,469	\$90,952,482	\$610.04
HUDSPETH	1,061	\$10,306,021	\$746.96	759	\$4,993,729	\$505.88
HUNT	28,304	\$279,497,299	\$759.60	28,058	\$276,195,795	\$757.20
HUTCHINSON	8,799	\$108,328,596	\$947.00	8,727	\$107,450,860	\$947.11
IRION	550	\$6,172,082	\$863.75	546	\$6,127,195	\$863.76
JACK	2,949	\$28,740,880	\$749.69	2,931	\$28,572,984	\$749.97
JACKSON	5,010	\$39,298,370	\$603.34	4,978	\$38,984,082	\$602.41
JASPER	10,745	\$86,834,983	\$621.63	10,665	\$85,782,000	\$618.72
JEFF DAVIS	904	\$7,009,713	\$596.47	885	\$6,787,737	\$589.76
JEFFERSON	124,982	\$1,406,049,546	\$865.39	123,081	\$1,378,084,026	\$861.27
JIM HOGG	1,967	\$14,528,013	\$568.24	1,709	\$10,021,616	\$450.99
JIM WELLS	17,496	\$154,367,829	\$678.68	17,405	\$153,274,307	\$677.40
JOHNSON	40,259	\$343,058,288	\$655.48	40,005	\$340,043,116	\$653.85
JONES	4,036	\$28,087,676	\$535.33	3,949	\$26,900,148	\$523.99
KARNES	3,750	\$27,314,114	\$560.34	3,709	\$26,931,288	\$558.49
KAUFMAN	26,029	\$210,530,150	\$622.18	25,834	\$208,482,179	\$620.77
KENDALL	10,692	\$100,055,879	\$719.85	10,634	\$99,354,188	\$718.70
KENEDY	427	\$4,098,688	\$737.79	424	\$4,083,989	\$740.34
KENT	288	\$1,545,000	\$412.18	280	\$1,469,253	\$404.12
KERR	17,415	\$142,497,355	\$629.43	16,894	\$132,566,437	\$603.60
KIMBLE	1,456	\$8,930,606	\$471.71	1,441	\$8,777,720	\$468.68
KING	181	\$1,656,828	\$702.84	178	\$1,629,223	\$702.76
KINNEY	748	\$6,160,377	\$633.81	620	\$3,566,865	\$442.30
KLEBERG	12,656	\$98,554,600	\$599.00	11,830	\$86,709,910	\$563.84
KNOX	1,277	\$10,562,408	\$636.42	1,249	\$10,238,085	\$630.71
LA SALLE	1,615	\$13,945,666	\$664.24	1,510	\$11,926,084	\$607.41
LAMAR	19,541	\$158,906,462	\$625.52	19,389	\$157,230,273	\$623.79
LAMB	4,478	\$31,714,905	\$544.76	4,438	\$31,296,737	\$542.46

*AWW = Average Weekly Wage

Table 3. Covered Employment and Wages for All Industries
First Quarter 2009

County	Total (Including Federal)			Total (Excluding Federal)		
	Employment	Wages	AWW*	Employment	Wages	AWW*
LAMPASAS	4,790	\$32,669,850	\$524.65	4,739	\$32,127,025	\$521.52
LAVACA	5,940	\$39,457,046	\$510.94	5,886	\$38,895,199	\$508.31
LEE	5,525	\$48,015,751	\$668.47	5,492	\$47,710,250	\$668.29
LEON	6,064	\$62,482,937	\$792.57	6,017	\$62,047,810	\$793.24
LIBERTY	17,127	\$140,701,469	\$631.93	16,996	\$139,218,834	\$630.10
LIMESTONE	8,629	\$62,519,376	\$557.33	8,581	\$62,012,382	\$555.92
LIPSCOMB	1,166	\$8,612,190	\$568.16	1,141	\$8,371,620	\$564.23
LIVE OAK	2,848	\$24,616,707	\$664.96	2,562	\$20,173,238	\$605.69
LLANO	4,320	\$30,447,496	\$542.11	4,291	\$30,172,385	\$540.85
LOVING	47	\$694,294	\$1,128.32	46	\$689,244	\$1,144.29
LUBBOCK	124,002	\$1,014,700,402	\$629.46	122,717	\$997,287,571	\$625.13
LYNN	1,359	\$10,119,581	\$572.66	1,333	\$9,880,659	\$570.32
MADISON	3,876	\$26,763,025	\$531.18	3,853	\$26,546,321	\$529.98
MARION	1,988	\$13,275,117	\$513.66	1,955	\$12,882,762	\$506.81
MARTIN	1,279	\$10,775,941	\$648.10	1,262	\$10,620,971	\$647.21
MASON	1,100	\$6,630,698	\$463.83	1,080	\$6,469,802	\$460.95
MATAGORDA	10,815	\$121,255,195	\$862.42	10,721	\$120,188,151	\$862.35
MAVERICK	15,919	\$102,044,059	\$493.09	15,050	\$86,842,246	\$443.88
MCCULLOCH	2,939	\$19,893,442	\$520.62	2,909	\$19,613,433	\$518.70
MCLENNAN	101,209	\$913,736,472	\$694.48	97,309	\$875,579,297	\$692.15
MCMULLEN	218	\$1,690,021	\$596.34	213	\$1,652,055	\$596.63
MEDINA	8,107	\$53,281,369	\$505.58	8,049	\$52,679,305	\$503.45
MENARD	510	\$2,939,868	\$443.13	499	\$2,871,370	\$442.34
MIDLAND	67,751	\$808,779,501	\$918.27	67,139	\$799,680,328	\$916.22
MILAM	5,848	\$60,896,812	\$801.02	5,793	\$60,308,080	\$800.85
MILLS	1,485	\$8,680,102	\$449.73	1,464	\$8,519,615	\$447.75
MITCHELL	2,302	\$18,235,930	\$609.28	2,275	\$17,992,178	\$608.27
MONTAGUE	5,186	\$38,625,337	\$572.92	5,129	\$38,036,903	\$570.43
MONTGOMERY	126,631	\$1,312,767,349	\$797.45	125,899	\$1,303,126,332	\$796.20
MOORE	9,765	\$82,397,370	\$649.06	9,694	\$81,498,140	\$646.72
MORRIS	4,655	\$52,782,997	\$872.17	4,631	\$52,530,371	\$872.55
MOTLEY	365	\$2,230,025	\$469.97	351	\$2,114,003	\$462.85
NACOGDOCHES	23,391	\$170,089,436	\$559.36	23,236	\$168,184,340	\$556.78
NAVARRO	15,560	\$116,288,701	\$574.88	15,456	\$115,100,744	\$572.85
NEWTON	1,861	\$12,667,535	\$523.51	1,836	\$12,454,086	\$521.88
NOLAN	6,174	\$47,711,393	\$594.45	6,126	\$47,179,166	\$592.45
NUECES	153,517	\$1,466,690,049	\$734.92	147,208	\$1,369,794,251	\$715.78
OCHILTREE	4,580	\$43,128,497	\$724.31	4,554	\$42,884,838	\$724.33
OLDHAM	715	\$5,171,146	\$556.08	706	\$5,092,001	\$555.07
ORANGE	22,401	\$226,024,333	\$776.14	22,291	\$224,733,601	\$775.54
PALO PINTO	8,382	\$74,871,425	\$687.11	8,336	\$74,345,075	\$686.02
PANOLA	8,714	\$82,104,592	\$724.75	8,636	\$81,301,433	\$724.14
PARKER	25,796	\$211,244,086	\$629.92	25,605	\$208,943,301	\$627.72
PARMER	4,935	\$36,116,990	\$562.96	4,881	\$35,412,557	\$558.09
PECOS	5,744	\$54,959,264	\$736.05	5,688	\$54,247,320	\$733.58
POLK	10,675	\$81,621,235	\$588.17	10,600	\$80,753,264	\$586.02
POTTER	75,910	\$699,608,986	\$708.95	73,876	\$669,268,244	\$696.88

*AWW = Average Weekly Wage

Table 3. Covered Employment and Wages for All Industries
First Quarter 2009

County	Total (Including Federal)			Total (Excluding Federal)		
	Employment	Wages	AWW*	Employment	Wages	AWW*
PRESIDIO	1,995	\$15,991,199	\$616.69	1,699	\$10,928,764	\$494.81
RAINS	1,766	\$10,672,141	\$464.94	1,744	\$10,422,928	\$459.73
RANDALL	28,013	\$203,382,889	\$558.48	27,940	\$202,515,866	\$557.55
REAGAN	1,758	\$18,835,832	\$824.02	1,746	\$18,710,066	\$824.46
REAL	689	\$3,873,180	\$432.63	684	\$3,811,791	\$428.89
RED RIVER	2,817	\$18,035,935	\$492.50	2,775	\$17,653,068	\$489.28
REEVES	3,892	\$29,483,130	\$582.67	3,804	\$28,233,735	\$570.98
REFUGIO	2,217	\$16,896,435	\$586.17	2,168	\$16,384,370	\$581.43
ROBERTS	326	\$2,360,258	\$557.50	318	\$2,302,188	\$556.89
ROBERTSON	3,733	\$32,240,307	\$664.41	3,681	\$31,723,104	\$662.87
ROCKWALL	20,242	\$162,270,935	\$616.67	20,132	\$161,003,945	\$615.20
RUNNELS	2,921	\$22,809,560	\$600.75	2,877	\$22,389,847	\$598.57
RUSK	14,253	\$140,986,701	\$760.92	14,162	\$140,028,416	\$760.59
SABINE	2,154	\$24,156,376	\$862.67	2,097	\$23,486,470	\$861.68
SAN AUGUSTINE	1,609	\$11,055,037	\$528.63	1,591	\$10,863,130	\$525.22
SAN JACINTO	2,128	\$15,119,848	\$546.55	2,100	\$14,820,886	\$542.89
SAN PATRICIO	18,229	\$172,287,541	\$727.01	17,925	\$168,501,654	\$723.09
SAN SABA	1,667	\$10,505,240	\$484.76	1,644	\$10,311,915	\$482.59
SCHLEICHER	870	\$7,380,208	\$652.29	858	\$7,260,686	\$650.70
SCURRY	6,406	\$65,042,180	\$780.98	6,364	\$64,626,938	\$781.12
SHACKELFORD	1,120	\$8,626,507	\$592.30	1,105	\$8,488,023	\$590.70
SHELBY	8,101	\$59,029,092	\$560.53	8,021	\$58,150,584	\$557.68
SHERMAN	797	\$5,811,739	\$560.92	786	\$5,696,291	\$557.71
SMITH	92,693	\$866,782,814	\$719.31	91,791	\$853,689,901	\$715.42
SOMERVELL	4,978	\$76,380,518	\$1,180.20	4,962	\$76,190,971	\$1,181.07
STARR	13,847	\$82,492,036	\$458.26	13,275	\$72,542,251	\$420.35
STEPHENS	3,282	\$25,746,605	\$603.38	3,262	\$25,516,467	\$601.78
STERLING	559	\$5,720,828	\$786.76	556	\$5,674,316	\$784.58
STONEWALL	547	\$3,559,139	\$500.82	533	\$3,436,843	\$496.32
SUTTON	2,911	\$45,640,845	\$1,205.92	2,903	\$45,550,995	\$1,207.00
SWISHER	2,031	\$13,943,826	\$528.20	1,999	\$13,612,391	\$523.90
TARRANT	753,420	\$8,428,887,778	\$860.58	739,224	\$8,180,550,153	\$851.26
TAYLOR	57,591	\$460,155,653	\$614.62	56,391	\$447,532,992	\$610.48
TERRELL	285	\$2,519,042	\$680.70	240	\$1,633,459	\$524.27
TERRY	3,986	\$32,037,523	\$618.27	3,954	\$31,679,897	\$616.37
THROCKMORTON	490	\$2,997,047	\$470.17	479	\$2,888,038	\$463.47
TITUS	16,188	\$129,312,972	\$614.49	16,074	\$127,939,084	\$612.27
TOM GREEN	44,238	\$359,993,985	\$625.98	42,938	\$345,006,308	\$618.07
TRAVIS	560,646	\$6,958,721,298	\$954.77	550,813	\$6,837,412,649	\$954.87
TRINITY	2,308	\$13,677,879	\$455.87	2,280	\$13,441,278	\$453.55
TYLER	4,010	\$28,246,985	\$541.86	3,964	\$27,718,352	\$537.89
UPSHUR	6,393	\$45,774,816	\$550.78	6,328	\$45,139,362	\$548.68
UPTON	1,413	\$15,172,233	\$825.77	1,407	\$15,124,481	\$826.69
UVALDE	8,973	\$62,500,533	\$535.80	8,760	\$58,960,905	\$517.73
VAL VERDE	16,851	\$127,184,124	\$580.57	14,777	\$98,480,504	\$512.64
VAN ZANDT	10,197	\$71,310,195	\$537.92	10,104	\$70,329,781	\$535.45
VICTORIA	37,740	\$339,012,720	\$690.99	37,507	\$335,809,442	\$688.71

*AWW = Average Weekly Wage

Table 3. Covered Employment and Wages for All Industries
First Quarter 2009

County	Total (Including Federal)			Total (Excluding Federal)		
	Employment	Wages	AWW*	Employment	Wages	AWW*
WALKER	22,578	\$179,783,855	\$612.52	22,421	\$177,757,703	\$609.87
WALLER	13,832	\$134,516,671	\$748.10	13,772	\$133,891,212	\$747.85
WARD	3,665	\$41,064,476	\$861.88	3,646	\$40,857,790	\$861.94
WASHINGTON	14,586	\$114,474,975	\$603.70	14,503	\$113,500,259	\$602.01
WEBB	86,214	\$622,527,484	\$555.44	83,279	\$571,717,854	\$528.09
WHARTON	14,749	\$112,845,959	\$588.53	14,647	\$111,800,781	\$587.14
WHEELER	2,312	\$20,271,285	\$674.45	2,285	\$20,023,110	\$673.97
WICHITA	54,517	\$453,972,633	\$640.55	52,214	\$431,131,468	\$635.15
WILBARGER	6,977	\$54,793,576	\$604.14	6,926	\$54,205,389	\$602.06
WILLACY	3,685	\$27,342,595	\$570.72	3,652	\$27,019,920	\$569.18
WILLIAMSON	118,903	\$1,334,724,882	\$863.49	117,385	\$1,315,422,762	\$862.01
WILSON	6,399	\$40,749,720	\$489.86	6,332	\$40,089,200	\$486.99
WINKLER	2,447	\$28,362,234	\$891.59	2,437	\$28,246,119	\$891.46
WISE	19,568	\$188,444,409	\$740.77	19,454	\$187,135,451	\$739.97
WOOD	9,362	\$67,197,980	\$552.13	9,261	\$66,140,709	\$549.35
YOAKUM	3,318	\$37,403,436	\$867.15	3,300	\$37,224,579	\$867.71
YOUNG	6,783	\$63,784,689	\$723.32	6,723	\$63,125,229	\$722.23
ZAPATA	3,710	\$32,204,163	\$667.66	3,561	\$29,817,086	\$644.03
ZAVALA	2,821	\$15,241,847	\$415.66	2,810	\$15,111,086	\$413.71

*AWW = Average Weekly Wage

TEXAS
WORKFORCE SOLUTIONS



Another quality product from
Texas Workforce Commission
Labor Market and Career Information

9001 North IH-35, Suite 103-A
Austin, Texas 78753
1-866-938-4444
FAX: (512) 491-4904
(512) 837-7001
www.lmci.state.tx.us

Equal Opportunity Employer/Programs. Auxiliary aids and services are available,
on request, to individuals with disabilities.
Contact Relay Texas @ 7-1-1

Copies of this publication have been distributed in compliance with the State Depository Law, and are available for public use through the Texas State Publication Depository Program at the Texas State Library and other state depository libraries.