

March
2013

Cash Flow Report

Fiscal
Year 2013



Susan Combs Texas Comptroller of Public Accounts



Cash Flow Report

Fiscal 2013

TABLE OF CONTENTS

	PAGE
GENERAL REVENUE FUND CASH FLOW	1
REVENUES AND EXPENDITURES YEAR-TO-DATE.....	2
GENERAL REVENUE FUND DAILY BALANCES.....	4
GENERAL REVENUE FUND NET CASH FLOW	4
TOTAL REVENUE	5
SALES TAX.....	5
OIL PRODUCTION TAX	6
NATURAL GAS PRODUCTION TAX.....	6
MOTOR VEHICLE SALES/RENTAL TAX	7
FRANCHISE TAX	7
MOTOR FUELS TAXES	8
INSURANCE TAXES	8
TOTAL EXPENDITURES	9
PAYROLL/BENEFITS EXPENDITURES	9
PUBLIC EDUCATION EXPENDITURES	10
LOTTERY TICKET SALES	10
SALES TAX COLLECTIONS.....	11
DAILY REPO BALANCES.....	11

STATE OF TEXAS
Tax and Revenue Anticipation Notes
General Revenue Fund Cash Flow
Fiscal 2013, September – February

	ACTUAL*	FORECAST*	ACTUAL LESS FORECAST
BEGINNING CASH BALANCE	(\$1,856,155,582)	(\$1,824,979,035)	(\$31,176,547)
REVENUE:			
Sales Tax	\$12,698,705,735	\$11,756,569,000	\$942,136,735
Natural Gas Production Tax	702,872,521	523,000,000	179,872,521
Oil Production Tax and Regulation Taxes	1,357,915,938	932,000,000	425,915,938
Motor Vehicle Sales & Rental Taxes	1,846,338,631	1,563,654,000	282,684,631
Motor Fuels Taxes	1,597,510,982	1,527,840,691	69,670,291
Franchise Tax	(163,480,189)	(156,384,000)	(7,096,189)
Alcoholic Beverage Taxes	474,246,869	460,152,000	14,094,869
Insurance Taxes	580,191,111	537,922,000	42,269,111
Utility Taxes	204,424,767	219,395,000	(14,970,233)
Property Tax Relief Transfer	360,742,633	454,642,000	(93,899,367)
Hotel Occupancy Tax	196,049,115	188,206,000	7,843,115
Lottery Proceeds	919,660,223	848,263,000	71,397,223
Federal Funds	10,280,902,799	11,730,214,125	(1,449,311,326)
Cigarette and Tobacco Tax	364,016,425	409,588,000	(45,571,575)
Other Revenue	3,645,775,301	3,538,005,240	107,770,061
Tobacco Settlement Money	469,907,165	432,225,361	37,681,804
Transfers from TRAN Proceeds/CP Program	9,800,000,000	9,800,000,000	0
TOTAL REVENUE	\$45,335,780,026	\$44,765,292,417	\$570,487,609
EXPENDITURES:			
Construction/Equipment/Materials	\$373,434,276	\$374,635,603	(\$1,201,327)
Payroll/Benefits	6,376,840,795	6,258,505,441	118,335,354
Public Assistance Payments	16,015,338,352	18,445,686,256	(2,430,347,905)
Intergovernmental Payments	1,150,975,623	1,154,275,459	(3,299,836)
Professional Service and Fees	772,481,485	596,201,885	176,279,600
Other Expenditures	1,867,336,787	1,653,268,238	214,068,550
Transfers to Foundation School Fund	9,932,807,617	9,756,310,627	176,496,990
Transfers from TRAN Proceeds/CP Program	0	0	0
TOTAL EXPENDITURES	\$36,489,214,934	\$38,238,883,509	(\$1,749,668,575)
REVENUES LESS EXPENDITURES	\$8,846,565,092	\$6,526,408,909	\$2,320,156,184
Revenue Interfund Transfers	\$9,053,322,513	\$7,244,498,863	\$1,808,823,650
Expenditure Interfund Transfers	12,396,473,630	10,575,106,563	1,821,367,067
Net Interfund Transfers	(\$3,343,151,118)	(\$3,330,607,700)	(\$12,543,418)
ENDING CASH BALANCE	\$3,647,258,393	\$1,370,822,173	\$2,276,436,219
GENERAL REVENUE BORROWABLE ACCOUNTS	\$4,185,580,770	\$3,791,670,545	\$393,910,225
OTHER BORROWABLE RESOURCES	8,150,160,766	8,237,356,872	(87,196,106)
EXPANDED BORROWABLE FUNDS	1,002,014,231	877,647,013	124,367,218
ENDING CASH BALANCE & BORROWABLE RESOURCES	\$16,985,014,160	\$14,277,496,603	\$2,707,517,557

*Notes:

- 1) This table compares the August 2012 Official Statement cash flow forecast with actual cash flow for September - February fiscal 2013.
- 2) Totals may not add due to rounding.

SOURCE: Texas Comptroller of Public Accounts – Treasury Operations.

STATE OF TEXAS
General Revenue Fund
Revenues and Expenditures Year-to-Date
Comparisons for Fiscal 2012 and 2013 - September-February

	FISCAL YEAR 2012	FISCAL YEAR 2013	% CHANGE
REVENUE:			
Sales Tax	\$11,688,456,807	\$12,698,705,735	8.6%
Natural Gas Production Tax	885,960,745	702,872,521	-20.7%
Oil Production and Regulation Taxes	943,892,264	1,357,915,938	43.9%
Motor Vehicle Sales & Rental Taxes	1,645,950,167	1,846,338,631	12.2%
Motor Fuels Taxes	1,565,313,033	1,597,510,982	2.1%
Franchise Tax	(152,584,899)	(163,480,189)	7.1%
Alcoholic Beverage Taxes	446,749,481	474,246,869	6.2%
Insurance Occupation Taxes	537,920,746	580,191,111	7.9%
Utility Taxes	219,394,638	204,424,767	-6.8%
Property Tax Relief Transfer	255,321,251	360,742,633	41.3%
Hotel Occupancy Tax	179,244,353	196,049,115	9.4%
Lottery Proceeds	867,768,915	919,660,223	6.0%
Federal Funds	10,176,181,518	10,280,902,799	1.0%
Cigarette and Tobacco Taxes ⁽¹⁾	382,495,075	364,016,425	-4.8%
Other Revenue	3,923,542,262	3,645,775,301	-7.1%
Tobacco Settlement Money ⁽²⁾	456,156,388	469,907,165	3.0%
TOTAL REVENUE	\$34,021,762,745	\$35,535,780,026	4.5%
EXPENDITURES:			
Construction/Equipment/Materials	\$332,839,663	\$373,434,276	12.2%
Payroll/Benefits	6,284,022,090	6,376,840,795	1.5%
Public Assistance Payments	16,422,281,963	16,015,338,352	-2.5%
Intergovernmental Payments	1,305,236,629	1,150,975,623	-11.8%
Professional Service and Fees	711,831,863	772,481,485	8.5%
Other Expenditures	1,950,131,362	1,867,336,787	-4.2%
Transfers to Foundation School Fund	11,381,684,599	9,932,807,617	-12.7%
TOTAL EXPENDITURES	\$38,388,028,168	\$36,489,214,934	-4.9%
REVENUES LESS EXPENDITURES	(\$4,366,265,424)	(\$953,434,908)	
Revenue Interfund Transfers ⁽³⁾	\$6,551,719,332	\$9,053,322,513	38.2%
Expenditure Interfund Transfers ⁽³⁾	(\$9,078,606,761)	(\$12,396,473,630)	36.5%
NET INTERFUND TRANSFERS	(\$2,526,887,429)	(\$3,343,151,118)	32.3%
TOTAL NET REVENUE AND EXPENDITURES	(\$6,893,152,852)	(\$4,296,586,025)	

Notes:

- 1) Cigarette Tax is lower in September of even-numbered fiscal years, due to a required speed-up of tax payment in August of odd-numbered fiscal years.
- 2) Fiscal 1999 was the first year that Texas received litigation settlement payments from the tobacco industry. The State will receive settlement payments in perpetuity.
- 3) Due to Governmental Accounting Standards Board Statement 24 requirements, federal funds that are received in the General Revenue Fund are transferred to dedicated accounts; the health and human services agencies then transfer the funds back to the General Revenue Fund to be expended. As a result, the "Revenue Interfund Transfers" and "Expenditure Interfund Transfers" reflect these transfers each month.

Excludes General Revenue Borrowable Accounts.

Totals may not add due to rounding.

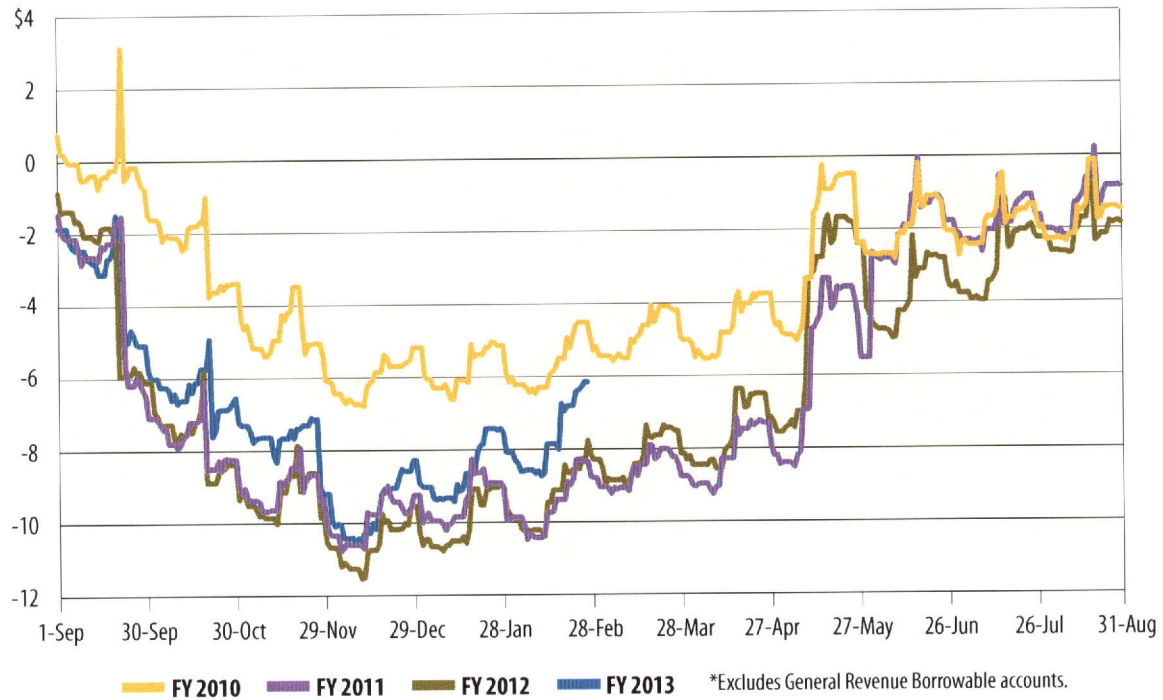
SOURCE: Texas Comptroller of Public Accounts - Treasury Operations.

Cash Flow Graphs



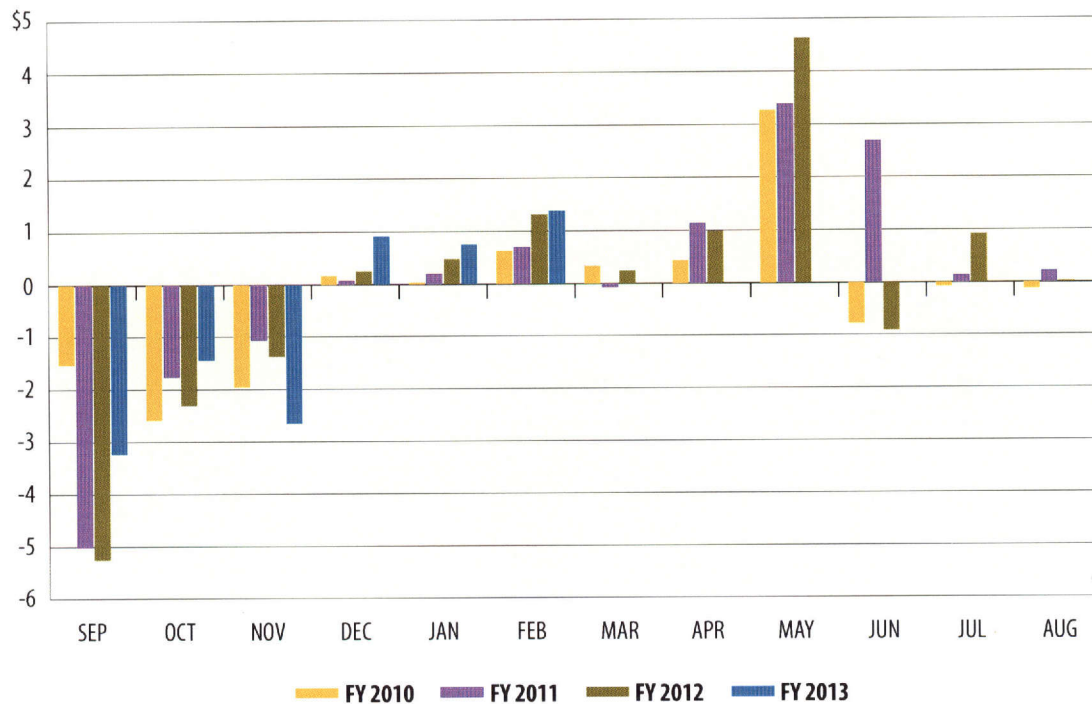
General Revenue Fund Daily Balances*

In billions



General Revenue Fund Net Cash Flow

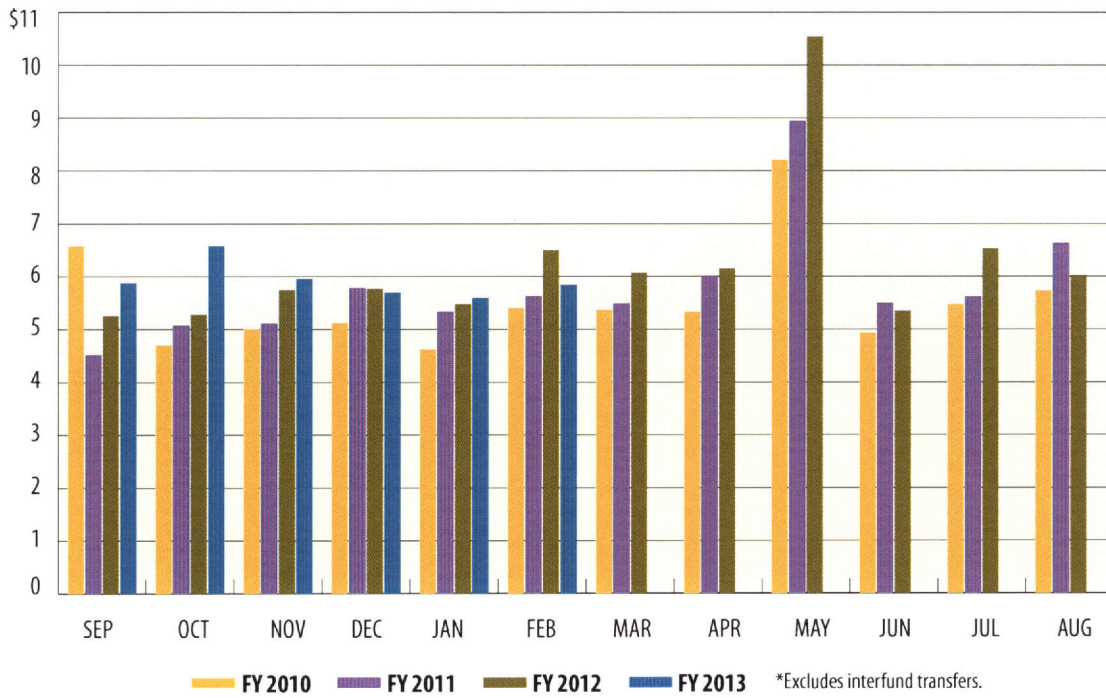
In billions





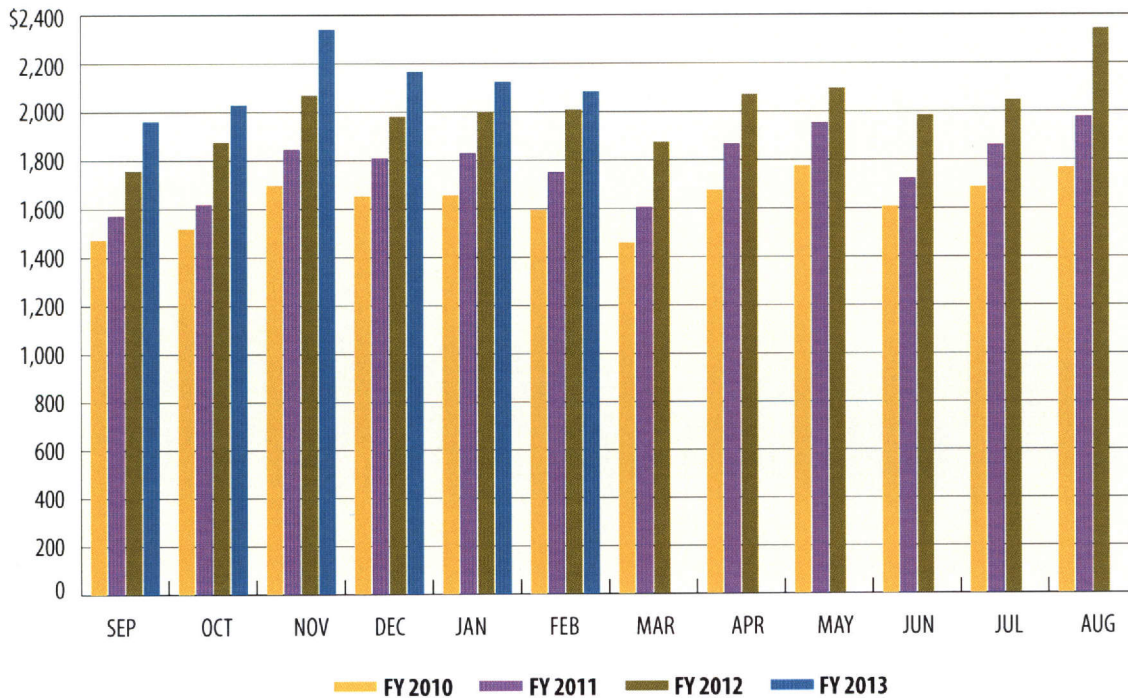
Total Revenue*

In billions



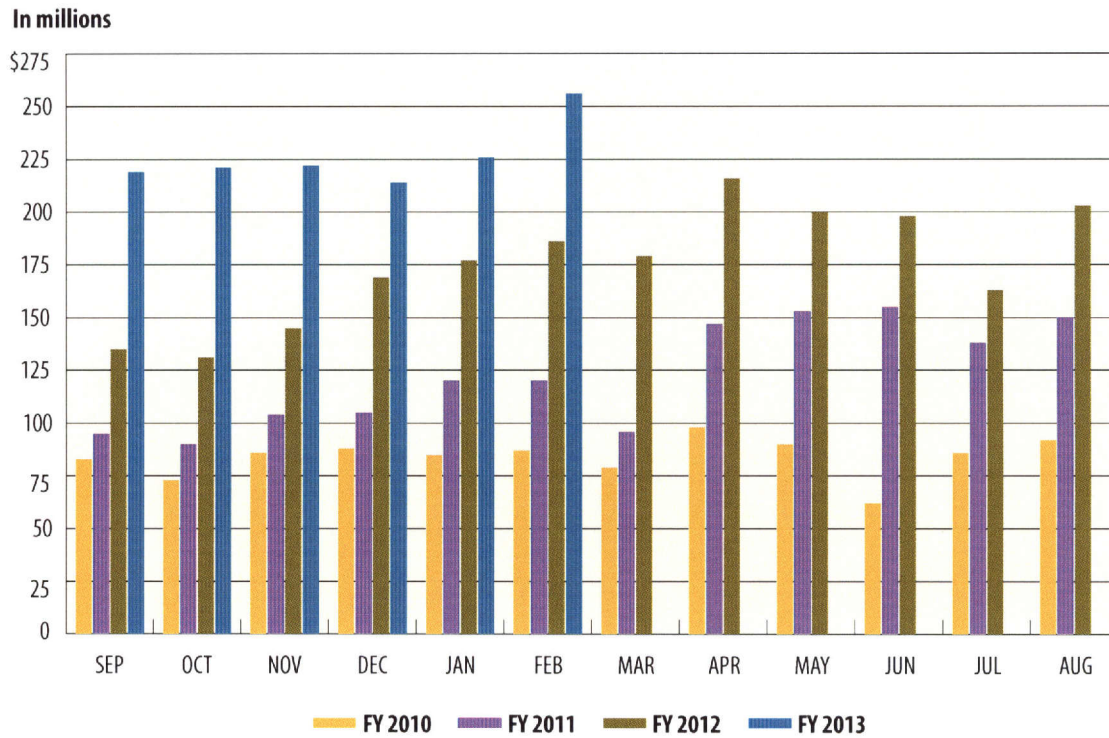
Sales Tax

In millions

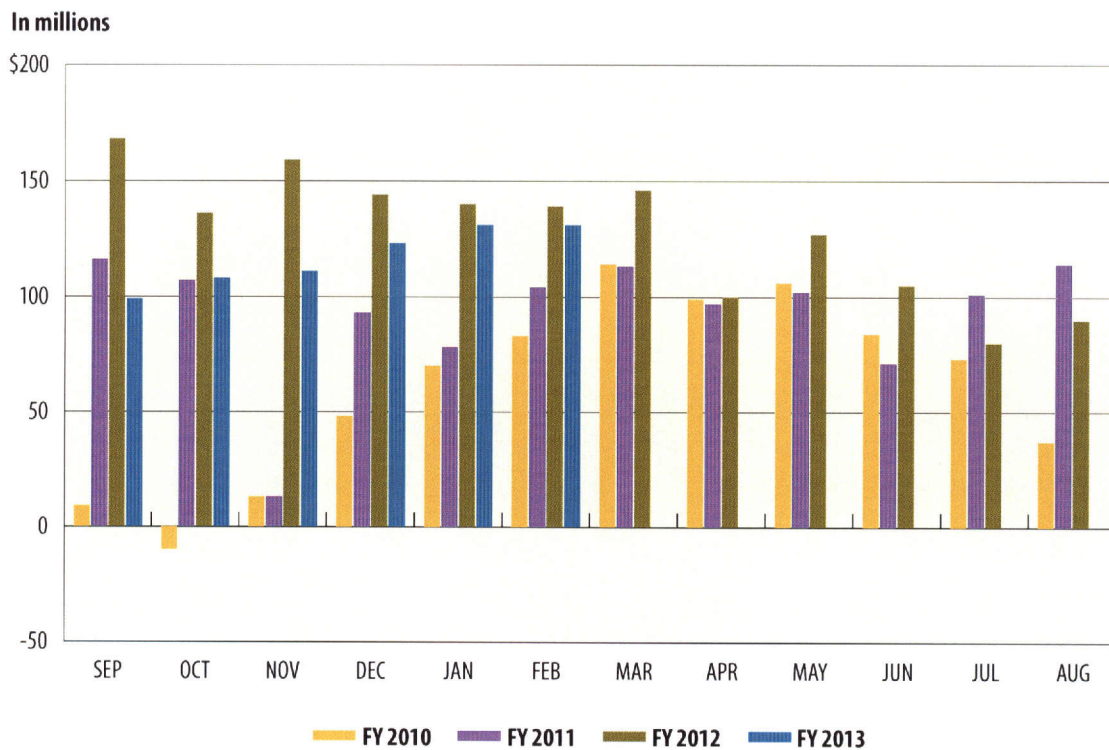




Oil Production Tax



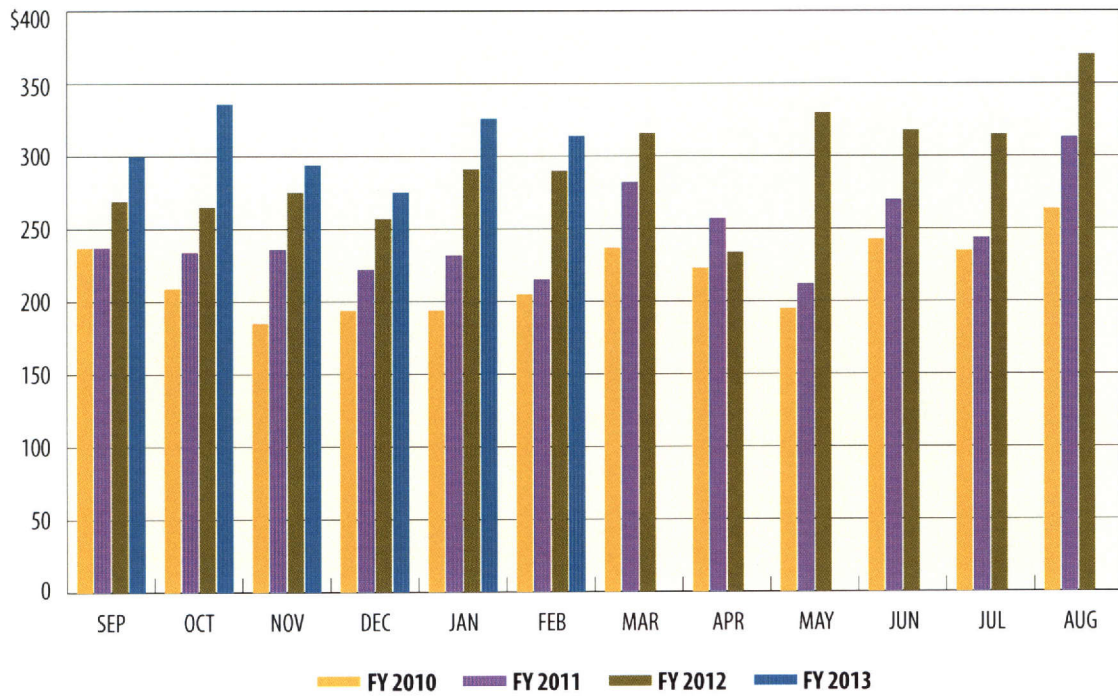
Natural Gas Production Tax





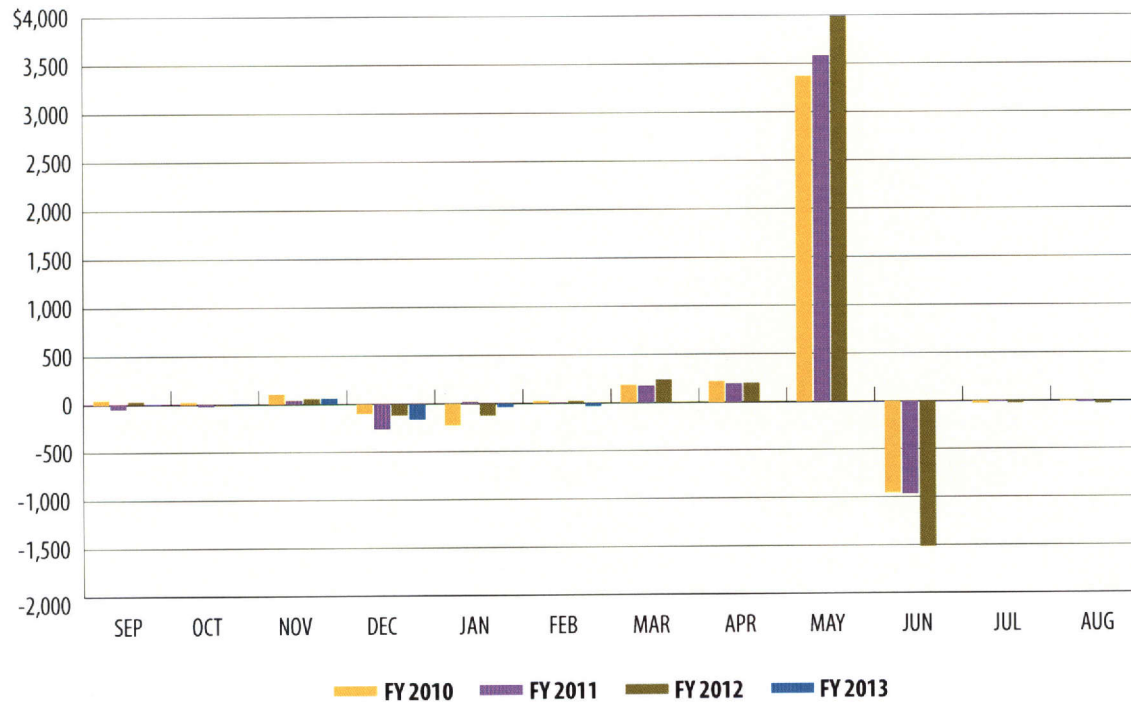
Motor Vehicle Sales/Rental Tax

In millions



Franchise Tax

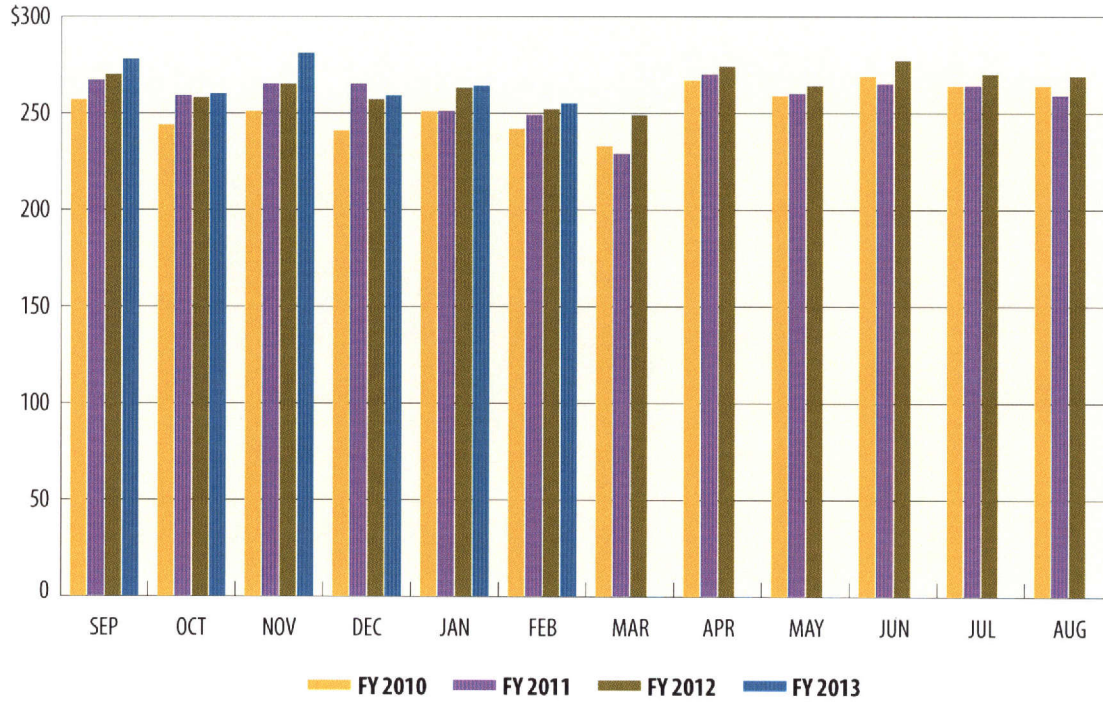
In millions





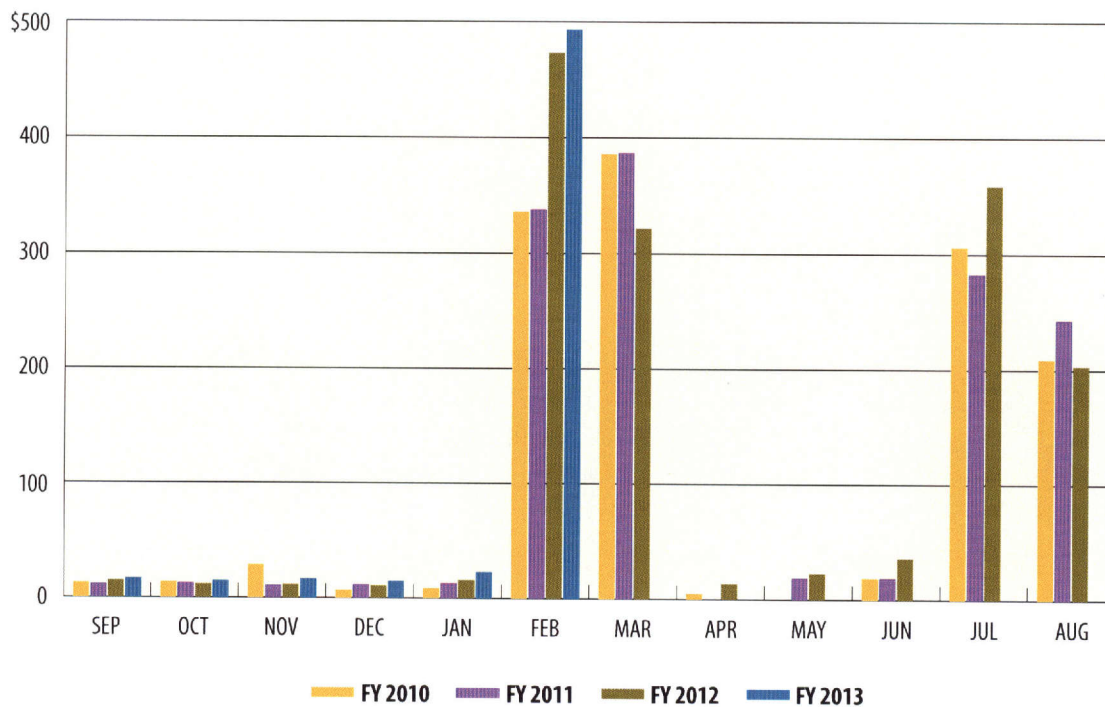
Motor Fuels Taxes

In millions



Insurance Taxes

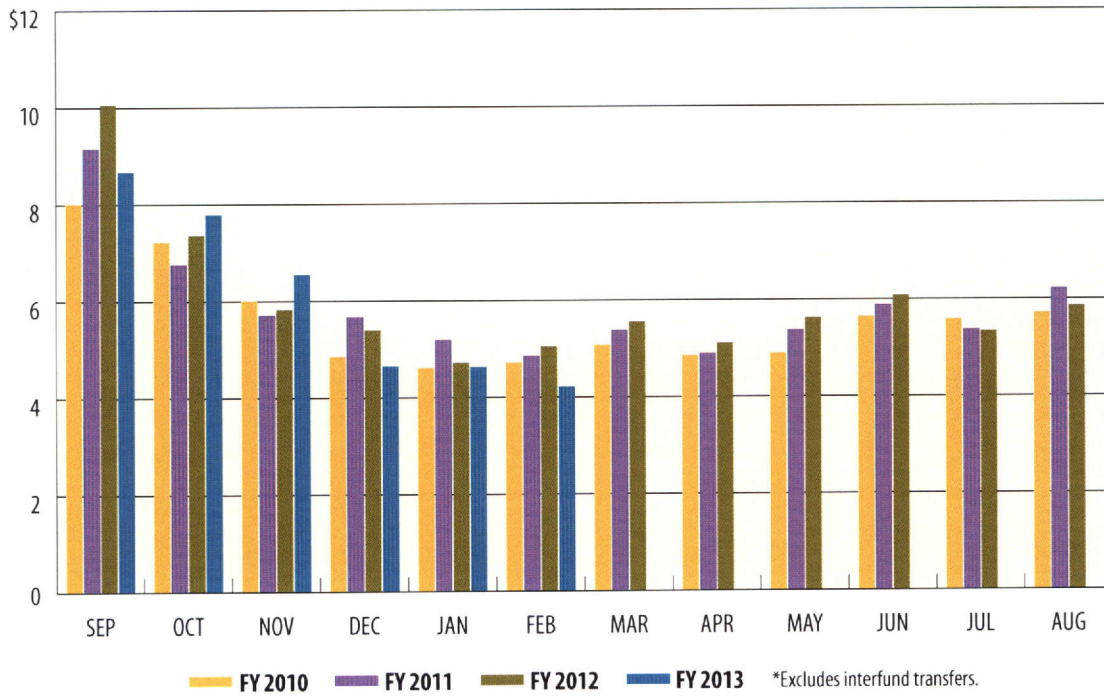
In millions





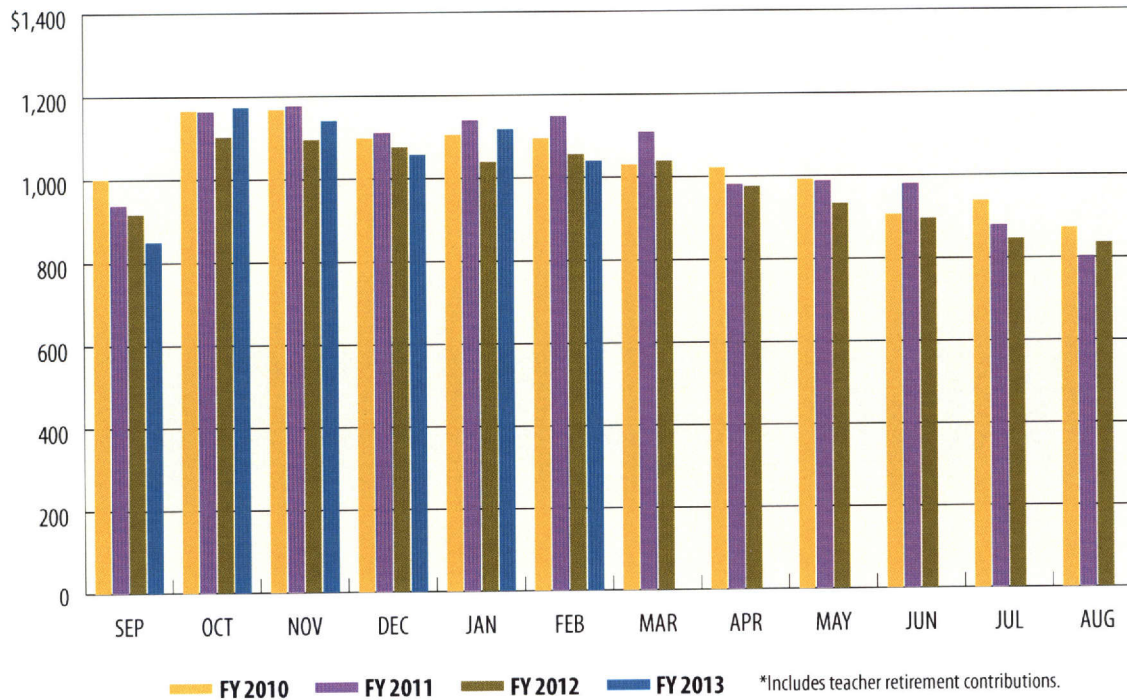
Total Expenditures*

In billions



Payroll/Benefits Expenditures*

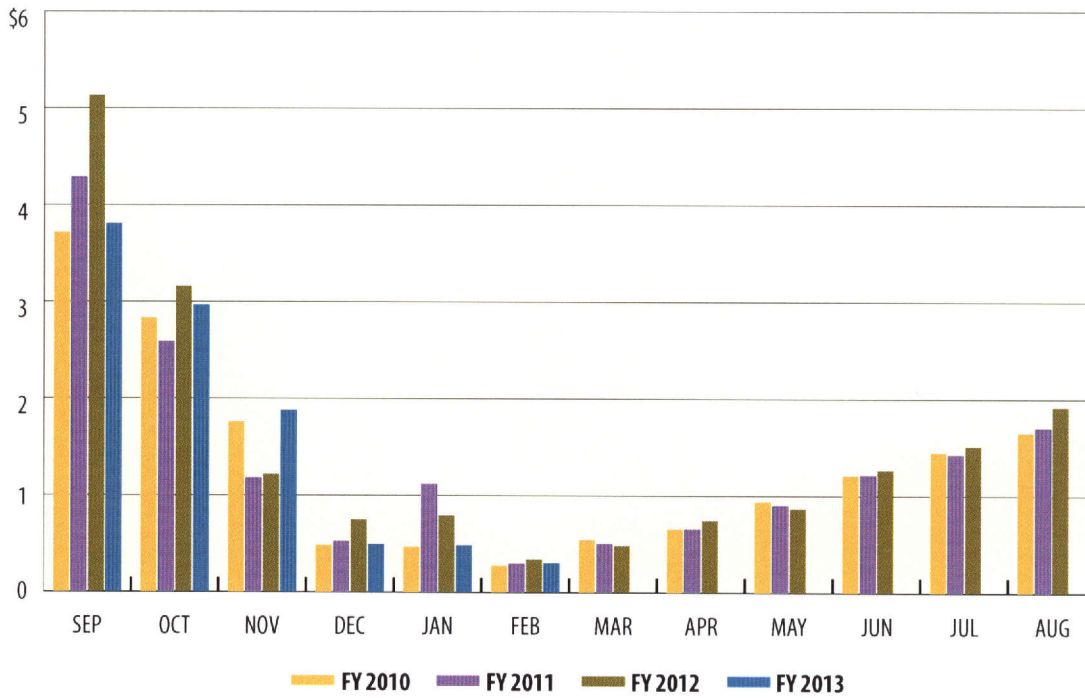
In millions





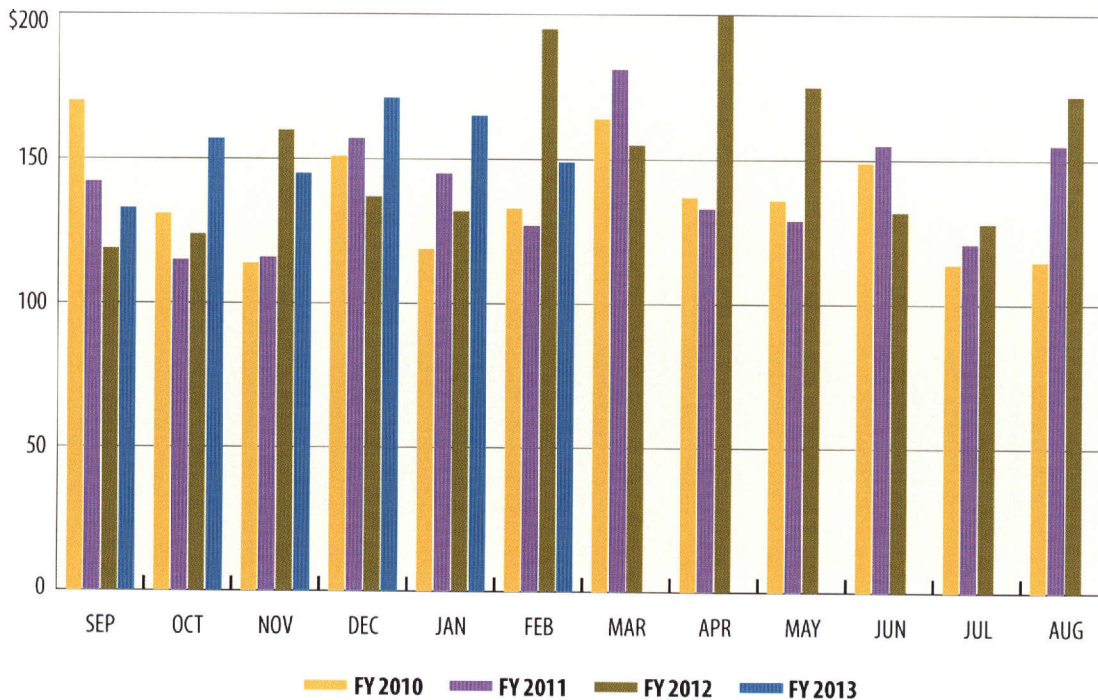
Public Education Expenditures

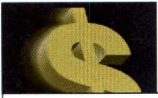
In billions



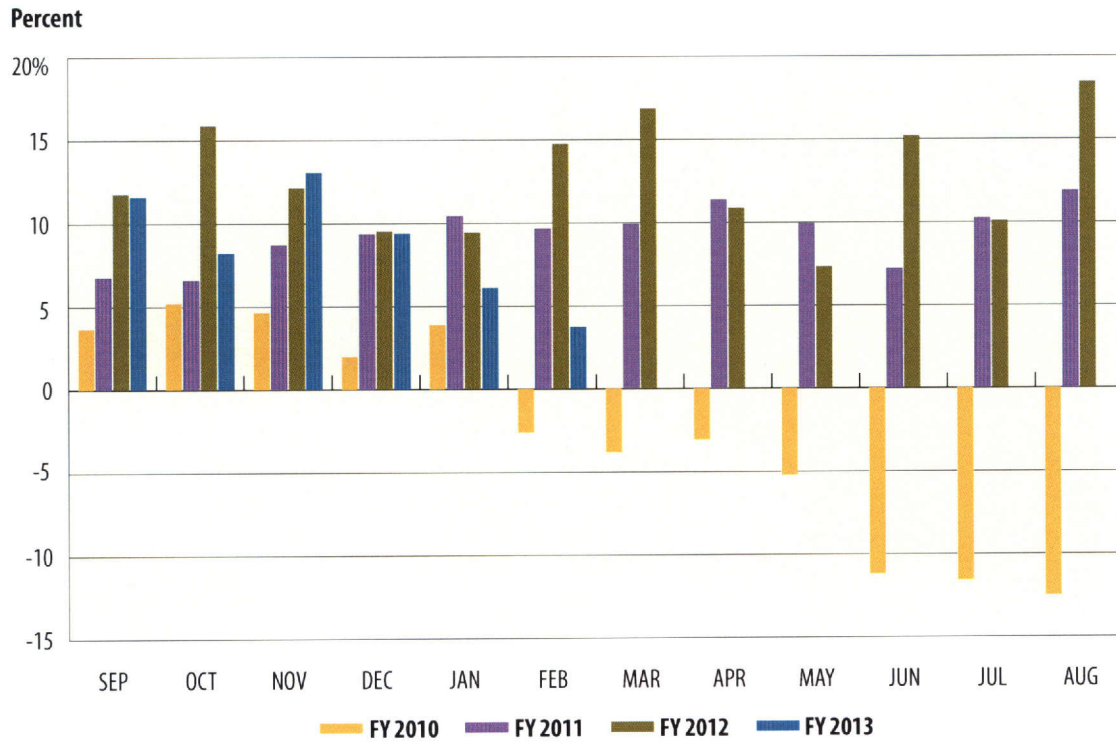
Lottery Ticket Sales

In millions

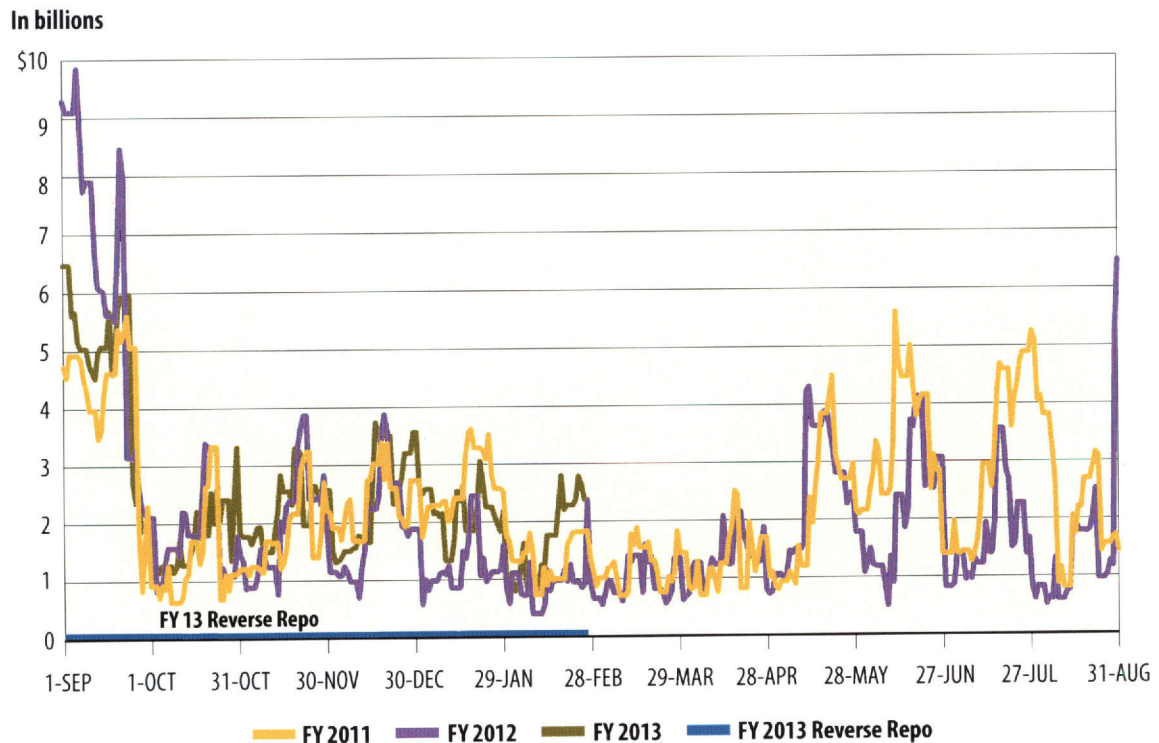




Sales Tax Collections (Percent change over same month prior year)



Daily Repo Balances



Texas Comptroller of Public Accounts
Publication #96-1251
Printed March 2013

For additional copies write:

Texas Comptroller of Public Accounts
Treasury Operations
P.O. Box 12608
Austin, Texas 78711

The Texas Comptroller of Public Accounts is an equal opportunity employer and does not discriminate on the basis of race, color, religion, sex, national origin, age or disability in employment or in the provision of any services, programs or activities.

In compliance with the Americans with Disabilities Act, this document may be requested in alternative formats by calling toll free 1-800-252-5555 or by calling in Austin 512-463-4600.