

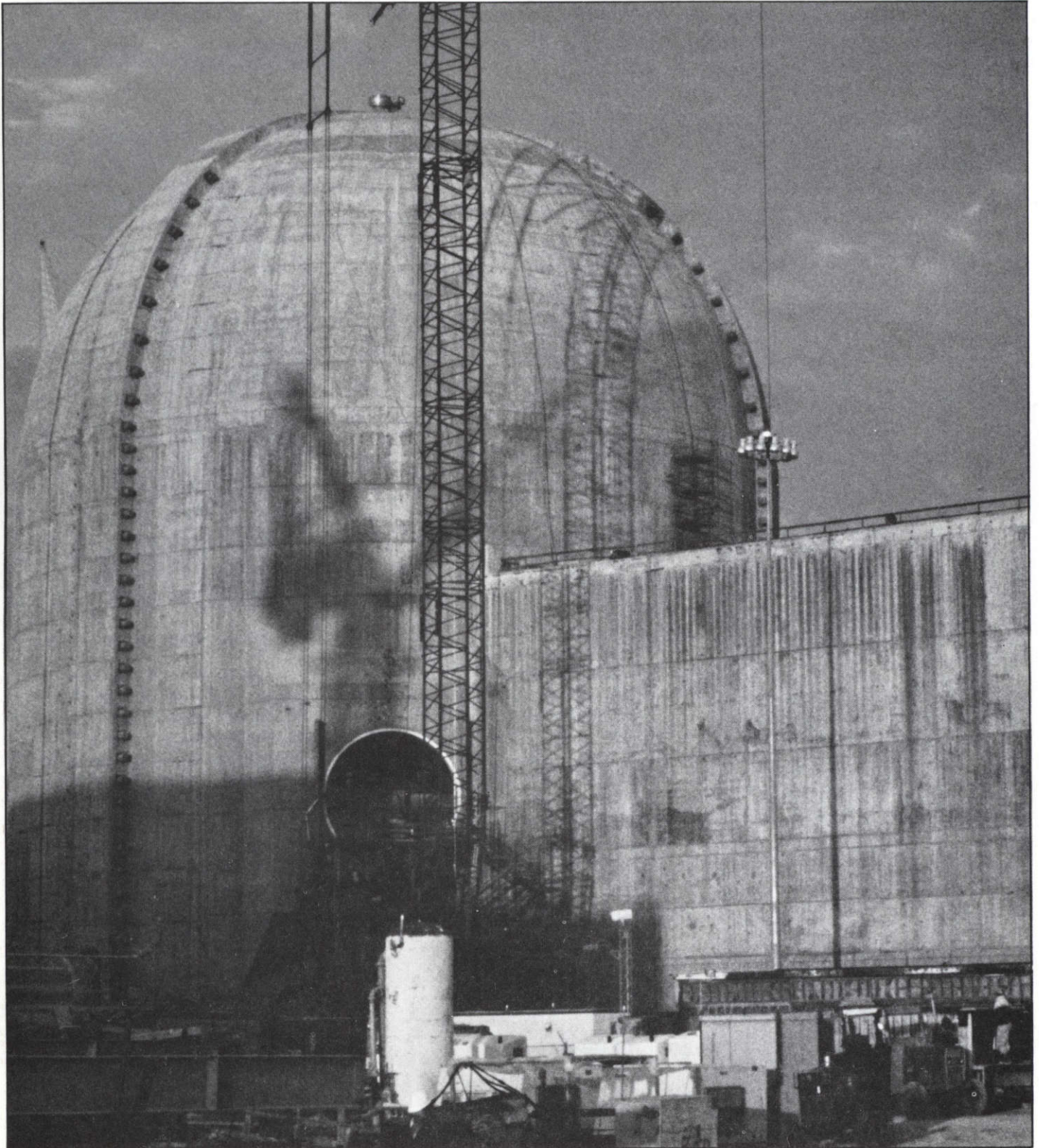
ZS 250.6 B 863 1987/March-April
Tx

The Broadcaster

CITY PUBLIC SERVICE

SAN ANTONIO, TEXAS

MARCH-APRIL, 1987



Update

CPS RECENTLY HOSTED THE 44TH ANNUAL NATIONAL AMERICAN PUBLIC POWER ASSOCIATION (APPA) CONFERENCE IN SAN ANTONIO AT THE CITY'S CONVENTION CENTER. The conference attracted national utility professionals who discussed new trends and events affecting public power in management, conservation, public relations and customer services.... At their April monthly meeting, CPS TRUSTEES ELECTED LOCAL BUSINESSMAN AND LAWYER PAT LEGAN TO A FIVE-YEAR TERM ON THE BOARD OF TRUSTEES. Legan occupies the vacancy left by former Chairman Glenn Biggs....SPECIAL ASSISTANT FOR RESEARCH ORAN PARK WAS RECENTLY FEATURED AS "VOLUNTEER OF THE MONTH" in TODAY published by the Greater San Antonio Chamber of Commerce. Park has served for 25 years as a member of the Chamber's Economic Analysis Panel which compiles statistical information on San Antonio's economy, population and housing....EIGHTY MEMBERS OF THE CPS RETIREES ASSOCIATION RECENTLY TOURED THE SOUTH TEXAS PROJECT NEAR BAY CITY....ON THE COVER: UNIT 1 OF SOUTH TEXAS PROJECT IS NEARING COMPLETION AND IS IN FINAL PREPARATIONS FOR FUEL LOADING AND LOW POWER OPERATIONS, SCHEDULED FOR JUNE. See related stories on pages 2, 3, and 4.



Meter Reader Commended

...from Joe Stuessy, customer, to Supervisor of Meter Reading, **James Woodcock**, about Meter Reader **Demetrius Brock**:

"About one month ago, my 11-year-old son and one of his friends were playing in my yard. Unfortunately, the friend let \$20 slip out of his pocket. There was considerable unhappiness when the loss was discovered."

"We looked for the \$20 and did not find it. We wrote it off as a permanent loss. Later that week, my neighbor across the street rang our doorbell and asked if we had lost \$20. Incredulously, we said yes, whereupon she handed us the \$20 bill! It seems that our meter reader, Mr. Brock, had discovered the \$20 in our yard while reading our meter. We were not home, so he left it with the neighbor."

"The implications go well beyond the \$20. Your employee's actions reveal an

Letters to CPS

innate sense of honesty and scrupulousness. My confidence in the veracity of my resulting CPS bills has been boosted 100%. His actions reflect most favorably upon CPS, its hiring and retention procedures, its standards, etc. He went out of his way to do the right thing."

One for the Books

...from the Culver Company, program support material publisher in Connecticut, to Supervisor of Public Safety Awareness **Louise Rawlings**:

"We want to thank you and **Betty Williams** very much for taking the time out of your busy schedule to see us. Over the years we have seen many utilities undertake safety awareness programs. Few have progressed to the point where yours has so quickly. We also want to thank you for your suggestions regarding our new electric safety book."

...from Executive Director of the Greater San Antonio Safety Council **Esther Bly** to Manager of Legal and Benefit Services **Stewart Schooler**:

"On behalf of the Greater San Antonio Safety Council and the Bexar County Medical Auxiliary, I would like to take this opportunity to extend our appreciation to City Public Service for allowing the following people to make presentations at the 16th Annual Youth Safety Seminar held recently: **Louise Rawlings** (Public Safety Awareness Supervisor), **Betty Williams** (Public Safety Awareness Representative), **Tommy Ortiz**, **Jo Ann Boehlert**, **Adolph Woods**, **Diana Gray** and **Jean Sondley** (Consumer Services Representatives).

"This year's Seminar, which trained approximately 4,000 youngsters from throughout public and private elemen-

tary schools in San Antonio, was acclaimed a huge success. The presentations made by CPS representatives were so vital to the overall program."



Gas Leak

...from Pamela Craig, customer, to General Manager **Jack Spruce**:

"I am writing with reference to Apprentice Operations Serviceman **Pete Olguin**. I had called CPS because of a gas leak I had discovered. I was so very thankful to Mr. Olguin because not only did he find the problem and fix it, he also checked all my units and instructed me on proper safety measures when using gas heaters. His customer service techniques are excellent, and I would like to commend you on such a great employee."

Outstanding Tour

...from L.R. Van Booven, teacher at Seguin High School's Vocational Education Department,:

"On behalf of Seguin High School and the Electrical Trades Department, I would like to express our sincere appreciation and gratitude for the outstanding

tour you provided for us recently. I can't help but note the dedication and professionalism that all of City Public Service personnel display.

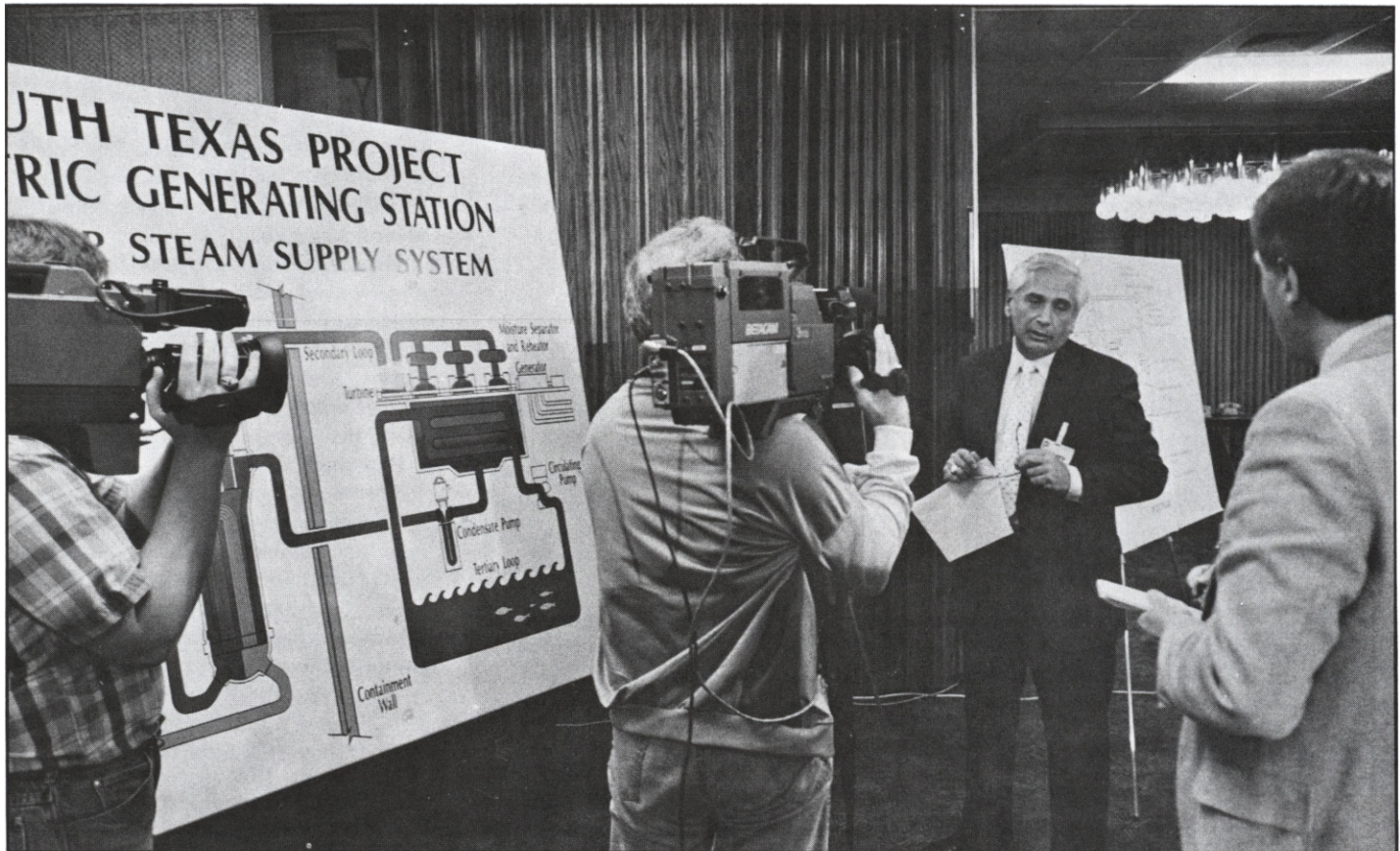
"Please convey our thanks to everyone involved in providing such an excellent and educational tour for our students. It was very rewarding from the time we arrived at the Jones Avenue Center until the minute we departed the Deely Plant."

(Hundreds of customers — and other visitors — every year tour CPS facilities. CPS personnel who helped make this tour successful were Chief System Operator **Harold Gorrell**, Supervisor of GEO Computer Maintenance **Jerry Beavers**, Senior Trouble Dispatcher **Billy Blackwood**, Supervisor of the Meter Shop **John Bordovsky** and Supervisor of Communications Maintenance **Jerry Clayworth**.

Also, Senior Engineering Technicians **Malcolm Homeier** and **Roy Brown** and Consumer Services Representatives **Tommy Ortiz** and **Adolph Woods**.)



STP Personnel Respond Well During Staged Nuclear Incident



Houston Lighting & Power Vice President for Nuclear Jerry Goldberg responds to media queries on simulated emergency during media training sessions prior to the Graded Radiological Exercise.

Although the scenario during the Graded Radiological Exercise in April was dismal, the response by the South Texas Project (STP) personnel was "satisfactory" and is anticipated to lead to accreditation of the STP Emergency Plan. A passing grade on the Nuclear Regulatory Commission's (NRC) exercise is the last major hurdle leading to fuel loading and low power licensing for STP's Unit 1.

The NRC staged a near meltdown of Unit 1's reactor core classifying it a "General Emergency", a category where there is a probability of the release of radioactive particles. The procedure for a "General Emergency" calls for the evacuation of residents living within a 10-mile radius of the power plant.

The NRC invented a series of mishaps

which culminated with a leak in the cooling system of the Unit 1 reactor. First, a truck carrying oil caught fire near the turbine generator building of Unit 1, causing a power outage. The three emergency diesel generators failed, cutting off the cooling system. Then a leak was discovered in one of the steam generators, releasing radioactive material.

The final results are not in but based on the positive preliminary critique delivered by the NRC, STP personnel are optimistic of a passing grade, according to CPS Nuclear Engineer Mike Hardt, Main Office.

"The health and safety of the public and plant personnel would have been protected and well served had the simulated scenario been real. There are several

areas that require corrective action but there are no major deficiencies," commented NRC representative J.B. Baird.

The exercise focused on the STP Emergency Plan which outlines steps to be taken in the event of an accident at STP. The plan indicates the role of STP personnel, state and local officials, evacuation procedures and dissemination of information to the media and the public.

During the drill, the Media Information Center at the Holiday Inn in Bay City was established to brief members of the media on the developments in the staged accident.

If the report card is favorable, fuel loading of Unit 1, now 99.2% complete, is expected to begin in June, followed shortly by non-commercial low power testing.

STP 1987 Milestones

Construction

- April- Unit 1, 99.2%
Unit 2, 75.3%
Overall Project, 89.2%

Testing and Evaluation

- February- 40 Nuclear Reactor Operators licensed by Nuclear Regulatory Commission (NRC) (After two years of training, 39 senior reactor operators and one reactor operator successfully completed a written and oral exam.)

- March- Hot Functional Testing (HFT) successfully completed (HFT or the full operation of Unit 1 without nuclear fuel began in January and hit a high point in March with the generation of the first electricity — 16.4 megawatts — enabling the power plant to be synchronized with the South Texas electrical grid.)

Favorable Systematic Assessment of Licensee Performance (SALP) Report on STP construction and management received (SALP under the NRC praised STP's "commitment to complete construction in a quality-like manner and operate the plant safely.")

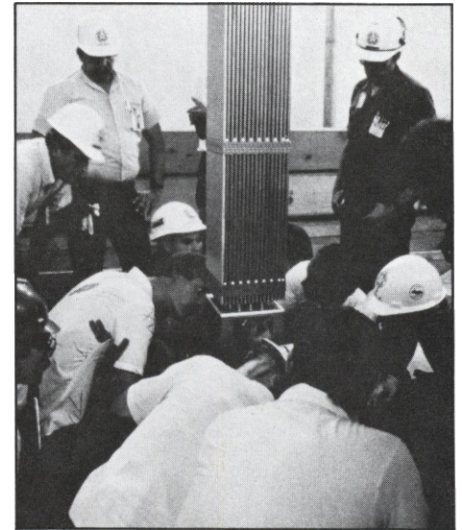
Structural Integrity and Integrated Leak Rate Test successfully passed (The tests checked pressure levels and containment control in the reactor containment building of Unit 1.)

Emergency Preparedness

- March- Two Media Training sessions conducted (STP staff practiced STP Emergency Plan, written procedures and staff training during an emergency situation, including the dissemination of information to the media. The sessions, conducted at Media Information Center, headquartered at the Holiday Inn in Bay City during an emergency, demonstrated the roles of federal, state and local officials in a nuclear accident.)

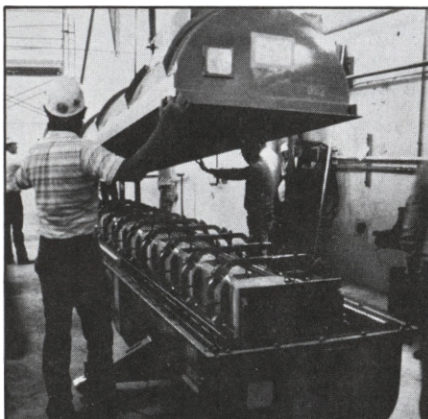
- April- Graded Radiological Exercise completed (STP Emergency Plan received a preliminary favorable critique from NRC on simulated nuclear mishap.)

Nuclear Pellets Packed With Energy



ABOVE: Each fuel assembly is carefully maneuvered into place and lowered into fuel storage racks. All the nuclear fuel for Unit 1 is presently in the Fuel Handling Building, the rectangular structure attached on the southside of the Reactor Containment Building.

LEFT: Approximately 16 million ceramic-coated, uranium dioxide pellets, like this one, are needed to fuel the Unit 1 reactor.



Employees, shown here opening the strong protective containers, are not wearing protective clothing because the new fuel emits less radiation than a person would receive on a sunny day at the beach.

With the arrival of all 193 nuclear fuel assemblies necessary to load Unit 1 of the South Texas Project at full operation with a 1250-megawatt punch, plant personnel await the green light from the Nuclear Regulatory Commission (NRC). The federal agency governing nuclear power plants must grant Unit 1 a low power operating license before fuel loading can proceed.

The thimble-sized uranium dioxide ceramic pellets began arriving at STP the latter part of January, assembled in 14-foot-long stainless steel fuel rods. Two hundred sixty-four rods are grouped together in an assembly.

A typical assembly costs about \$400,000 and will produce about 1.5 trillion BTU's (British Thermal Units) of energy. That's

equal to about 250,000 barrels of oil, worth about \$4.6 million on today's market, or 80,000 tons of coal, which is about \$1.8 million.

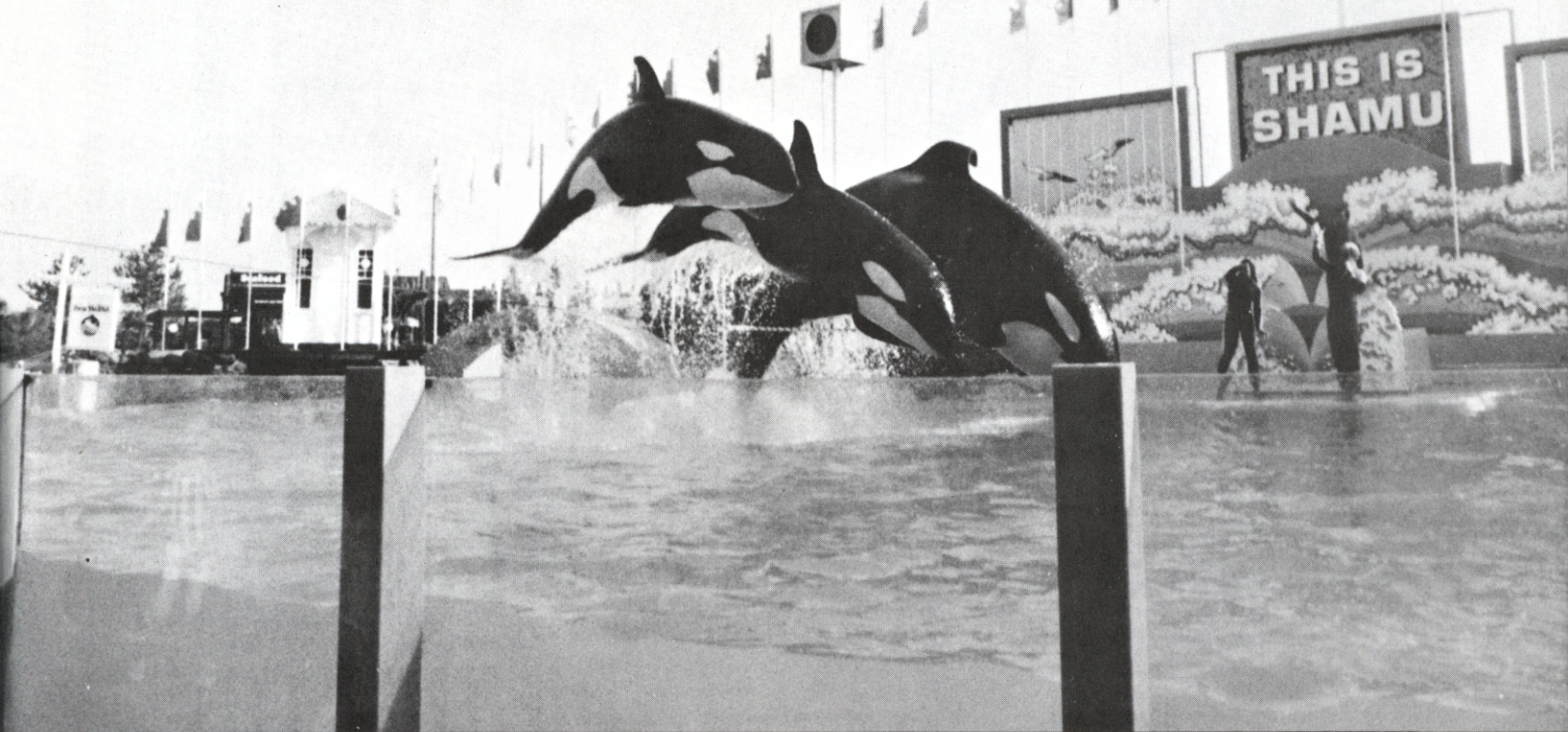
"During STP's 40-year lifetime, the Project's owners expect fuel cost savings to approach \$24 billion," CPS Nuclear Engineer **Mike Hardt** said. "It is projected that the low cost of nuclear fuel will remain relatively constant while costs of other fuels are expected to rise."

The 2,500,000-kilowatt plant represents state-of-art American technology and will increase the electric reliability of South Texas, Hardt said. City Public Service is a 28% owner of the Project. Other owners are Project Manager Houston Lighting & Power, Central Power and Light Co., of Corpus Christi and the City of Austin.

Frolicking in a Cool, Well-Lighted Sea World



by Pat Curtis



Killer whales perform for delighted spectators at Sea World in San Diego. Soon they will be frolicking at Sea World of Texas here in San Antonio.

"This park is vital to San Antonio, and our tourist industry. Everything from CPS' end has gone smoothly. Our folks are pleased and excited to be working on something so big and of so much importance to San Antonio."

—Charles Scott
Director of Engineering
and Technical Division

It takes a lot of electricity to keep a penguin cool, an ocean reef constantly lighted or a sea lion frolicking in its saline habitat. And 6,000 pounds of Shamu the killer whale had better be happy in its year-round climate-controlled environment.

San Antonio is gearing up for its very own window onto aquatic life — the most advanced oceanarium ever built — Sea World of Texas. The 250-acre park, a \$140 million investment by the Harcourt Brace Jovanovich Company, will be the largest marine zoological institution in the world. It will outdistance the other Sea World parks, established in San Diego, Orlando and Cleveland, borrowing the best features of each and adding some unique attractions of its own.

Opening on Memorial Day next year, Sea World of Texas, located in west Bexar County 13 miles from downtown,

is expected to draw 3 million visitors during its first year of operation. With opening day just around the corner, there's a lot of work going on at the Sea World site. The intensity will pick up in the summer months when some 2,000 people will be working to make the May, 1988 deadline.

When the aquatic park opens, there will not be a utility pole in sight. But right now, as the concrete work for the 7-million gallon Shamu stadium progresses and as blasting continues at the 12-acre water ski lake, CPS utility poles are very much in evidence.

As underground primary lines are being installed by contractors on park property, CPS is providing backup for construction from approximately 25 temporary overhead services totaling about 1,500 kilowatts. When the project

continued



Reviewing plans to deliver power to Seaworld are Seaworld's Vice President of Engineering and Design Jim Redlinger, (right) and CPS Project Engineer Steve Mokry. They are at Seaworld's main gate which features flags from every state.

is complete, the wooden poles will come down and a 35-KV distribution line will be brought to a point close to West Military Drive, where it will go underground and into Sea World.

All temporary electric services are fed out of Grissom Road Substation. But when Sea World opens, it will receive 10,000 KVA from two sources, according to Project Engineer **Stephen Mokry**, Main Office. Five thousand KVA will come from Grissom Road, and 5,000 KVA from Marbach Road Substation, with service points from Reed Road and West Military Drive. Target dates for completion of service lines are July and November, respectively. Also, between now and then, CPS will extend gas facilities from Potranco Road, delivering 28,000 cubic feet of gas per hour.

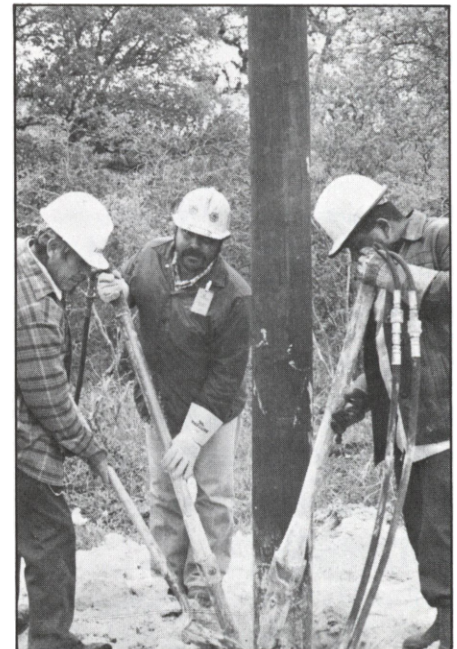
Sea World of Texas will change the face of San Antonio. Director of Engineering and Technical Division **Charles Scott** of Customer Services, said, "This park is vital to San Antonio and our tourist industry. Everything from

CPS' end has gone smoothly. Our folks are pleased and excited to be working on something so big and of so much importance to San Antonio."

"It will be a brand new line to meet the large demand," commented Job Planner and Surveyor **Saul Juarez**, who, with Surveyor **Leo Graphman**, surveyed the temporary and permanent lines from the substations to the site.

Will another substation be built in northwest San Antonio to handle the "spillovers" from Sea World? "Later," said Mokry, "as the load grows. We have substation sites identified, and will build as that area expands further — say in the 1990s. But for now, there is ample, reliable electric and gas energy for Sea World."

Big things are happening in the tranquil, bluebonnet-covered hills northwest of San Antonio. CPS is helping build the world's largest marine zoological park. And when the building is done, CPS will continue to deliver the power to keep Shamu happy.



Special Truck Drivers Florentino Lares (left) and Rene Aldana (center) and Buttmann Jesse Casillas install a 25-foot service pole at Seaworld.

Sea World

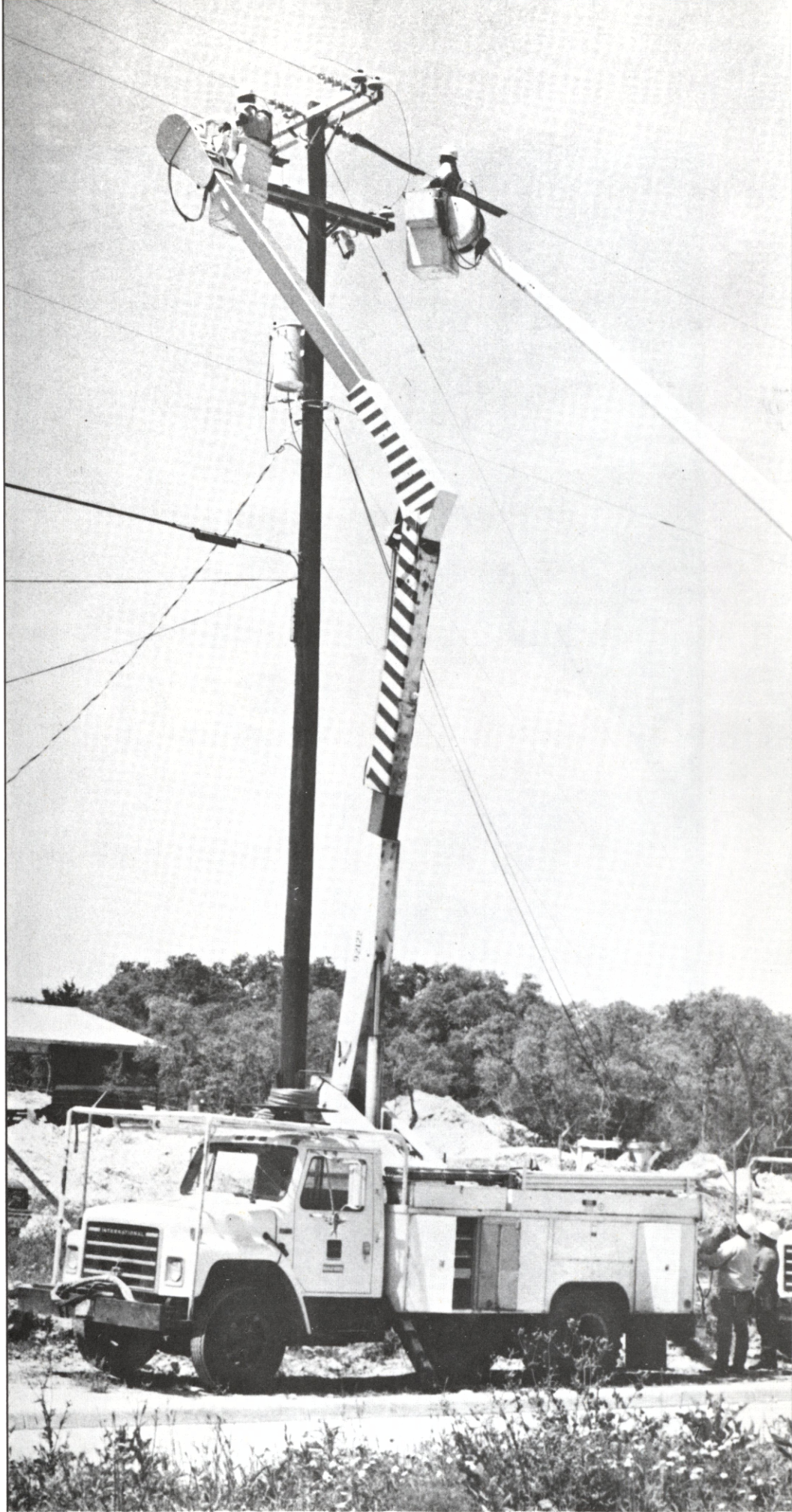
On the Job

Since the Sea World project began two years ago, many CPS Main Office personnel have been in on the planning, including Principal Engineer of Underground Design **Marvis Hejtmancik**; Supervisor of Gas and Electric Meter Design **Tom Chadwell**, Principal Distribution Planning Engineer **Shen Sheng Lan**, Principal Engineer of Substation Design **Jerold Lawrence**, Director of Engineering and Technical Division of Customer Services **Charles Scott**, Principal Engineer of Gas System Planning **Dennis Voges**, Financial Services Manager **Don Thomas** and Director of Financial Planning **Nadine Knaus**.

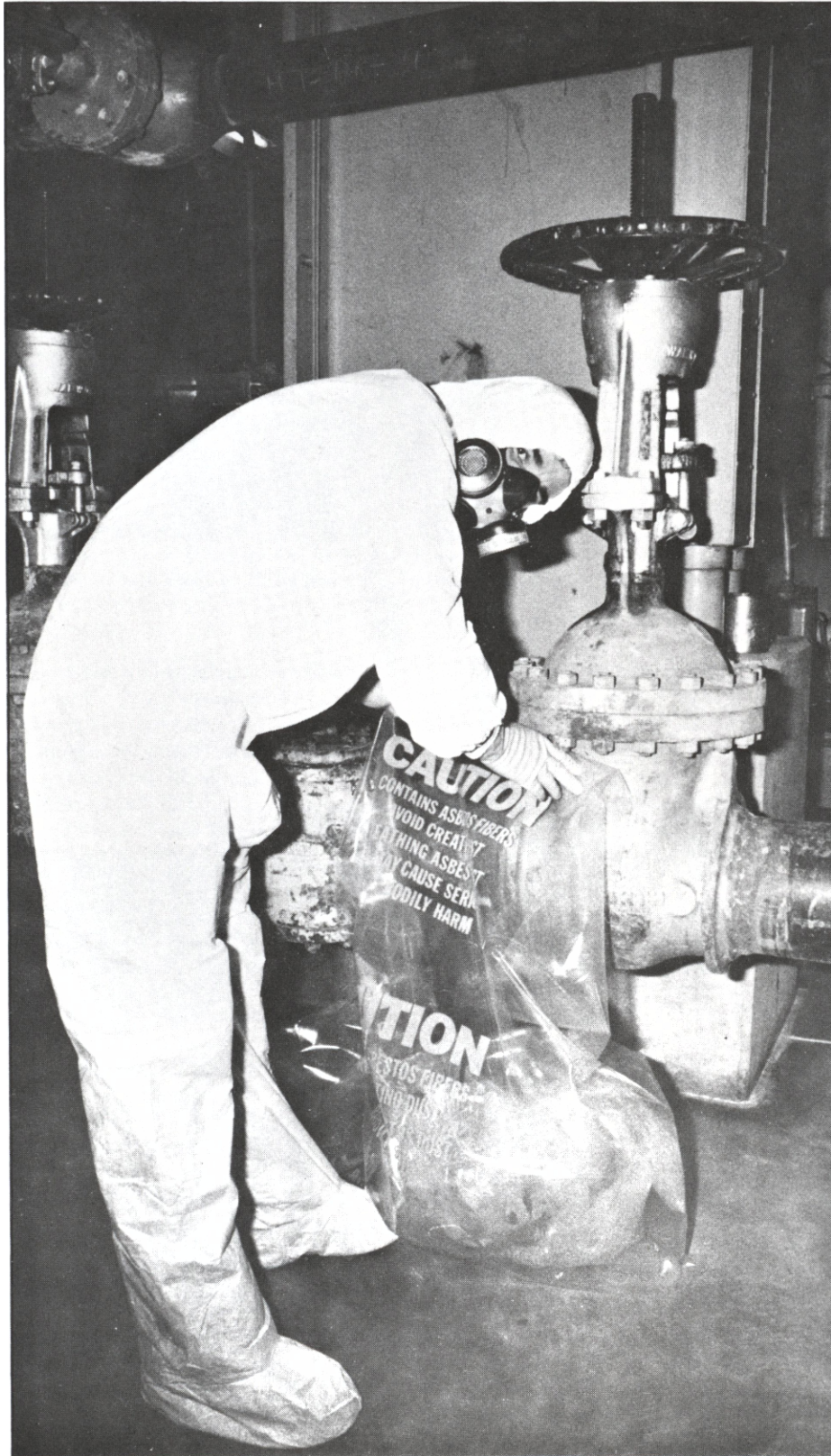
Pole Crew Foreman **Norman Jordan** from Southwest Service Center, has been on the site throughout the two-year project. His crew consists of **Rene Aldana**, **Jesus Casillas**, **Rudy Garza**, **Willie Garza**, **Max Hernandez**, **Raymond Mendoza** and **Samuel Ponce**.

Line Crew Foreman **Roy Wahl**, also from Southwest Center, and his crew strung the electric line. Crew members are **Mike Guerra**, **Joseph Kozowyk**, **Chester Laskowski** and **Henry Villarreal**. Serviceman **Joe Owings** was the service meter planner. All CPS crews on the Sea World project have been working under the overall supervision of Southwest Center General Foreman **Norman Neill**.

Southwest Center Line Crew strings wire to provide temporary service to Sea World. Permanent service will be installed underground, below the 250-acre park.



Making the Workplace Safer



Little did the industrial world suspect that improving the efficiency of machinery and building materials in the early 1900s with the flame- and heat-resistant "miracle mineral" — asbestos — would abruptly shift to abatement and control of the mineral in the workplace.

Asbestos, a tiny needle-like fiber, whose name comes from the Greek word for "indestructible," was common prior to the 1970s in the utility industry. It was used in power plant insulation and fireproofing materials in the underground electric cable network.

CPS stopped purchasing asbestos materials in the late 1970s. In 1984, the amended National Emission Standards for Hazardous Air Pollutants (NESHAP), issued by the Environmental Protection Agency (EPA), ruled the reapplication of asbestos to be illegal.

Today, the CPS Interdepartmental Asbestos Task Force, under the Central Safety Committee, carefully monitors CPS power plants and the underground electric network to prevent employee exposure to asbestos. The light-colored mineral, which varies in hue, also is found in automobile brake shoes, brake pads and clutches.

"Not all asbestos is hazardous," stated **Scott Smith**, Supervisor of Environmental Compliance in the Generation and Environmental Planning Department and a member of the Asbestos Task Force. "Only the asbestos which is 'friable,' or easily crumbled, is dangerous. In most cases, it is firmly bonded so fibers cannot escape into the air."

The danger of asbestos exposure arises when workers breathe the tiny airborne particles, some of which could remain trapped in the lungs and in the lung tissue. The lungs cannot dissolve the foreign particles, so there could be an increased risk of developing abes-

CPS worker is well protected in a disposable Tyrek suit and an air respirator as he removes the flame-and heat-resistant mineral.

tosis (a disease characterized by fibrotic scarring of the lung), mesothelioma (cancer of the tissue surrounding the lungs) as well as cancer of the esophagus, stomach, colon and pancreas. The appearance of an asbestos-related disease is not always immediate and can remain latent between 15 to 40 years, according to Smith.

CPS Asbestos Abatement Procedures

The control of asbestos in the CPS workplace started in 1980 with the refurbishing of CPS' older generating units. The Environmental Compliance Section of Generation and Environmental Planning Department Power Plant and the Plant Betterment Division of the Power Plant Engineering and Production Department have been instrumental in ensuring CPS, as well as contractors hired by CPS, comply with EPA guidelines which call for the reduction of airborne emissions of asbestos fibers to protect the worker and the general public.

"It is the job of the Environmental Compliance Section to identify federal, state and local requirements governing asbestos abatement projects, develop cost-efficient procedures for abatement which will provide the utmost protection to the worker and monitor the technological advances and techniques used in asbestos abatement for implementation at CPS," Smith said.

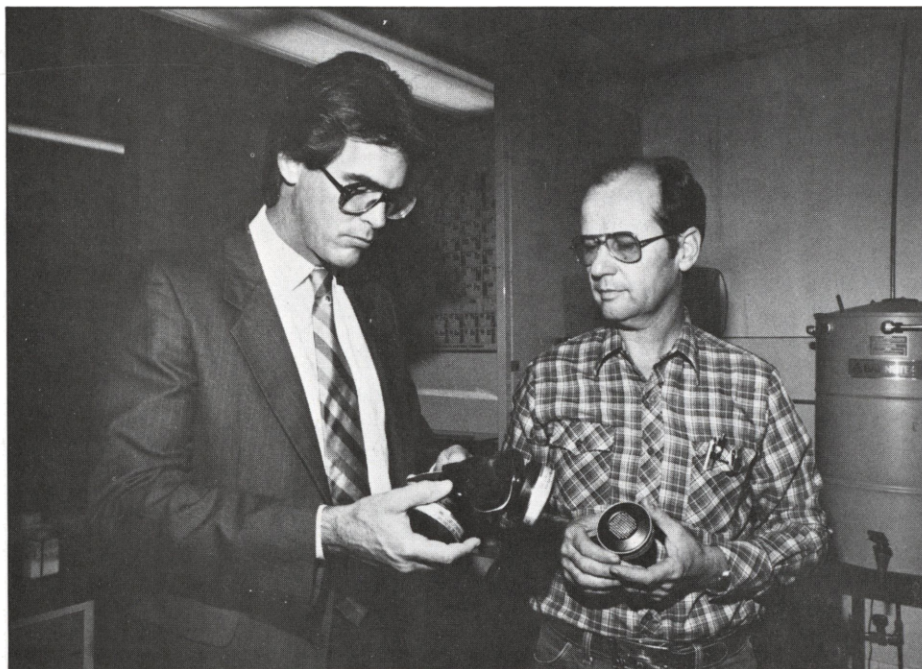
The procedures followed included "wetting" or saturating the mineral to prevent the release of fibers into the air, sealing the wetted material and disposing of it in an approved landfill.

The Creation of the Interdepartmental Asbestos Task Force

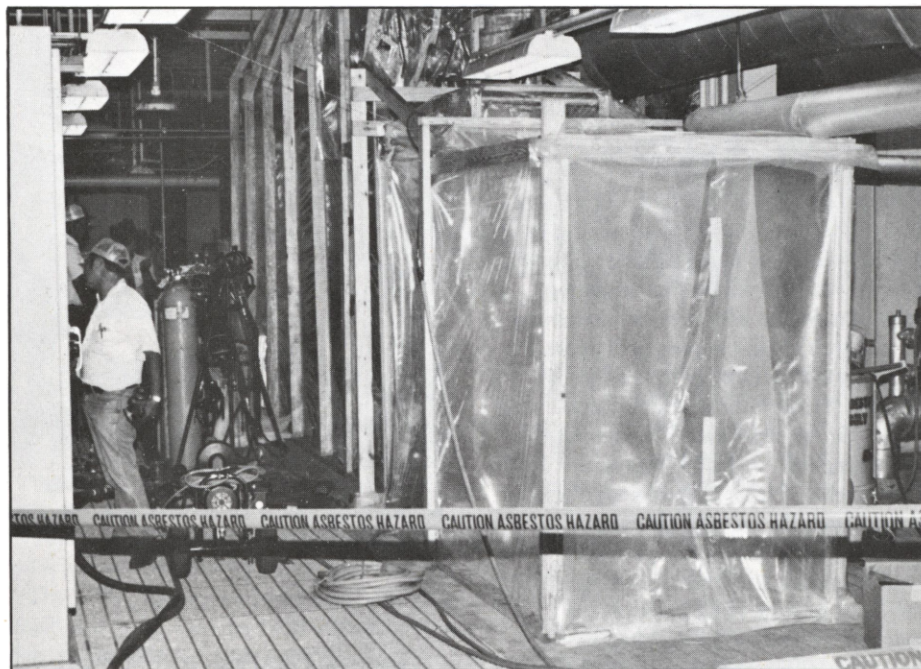
With worker protection as the number one priority, the CPS Central Safety Committee formed the Interdepartmental Asbestos Task Force in November, 1984, and initiated a rigorous abatement program. This program has complied with EPA regulations issued two years later on April 25, 1986.

"The Task Force's goals are to enforce these rules and supply as much employee protection as possible," said

continued



Smith (left) and Dorsett check air filtration equipment used to monitor asbestos airborne emissions in the workplace.



The enclosed area above is off limits to unauthorized and unprotected personnel.

Making the Workplace Safer

Danny Palacios, Superintendent of Plant Operations, Jones Avenue, and member of the Task Force.

CPS' mandatory abatement procedures include the identification of asbestos by laboratory analysis, placement of caution signs, enclosure of work areas containing asbestos, the monitoring of the Permissible Exposure Concentrations (PEC), protection of workers handling asbestos with air respirators, special clothing and change rooms, employee notification of possible exposure and follow-up medical examinations.

Members of the Task Force include the Construction, Power Plant Engineering and Production, Legal and Benefit Services, Personnel Administration and Generation and Environmental Planning departments.

Implementation of Asbestos Abatement Procedures

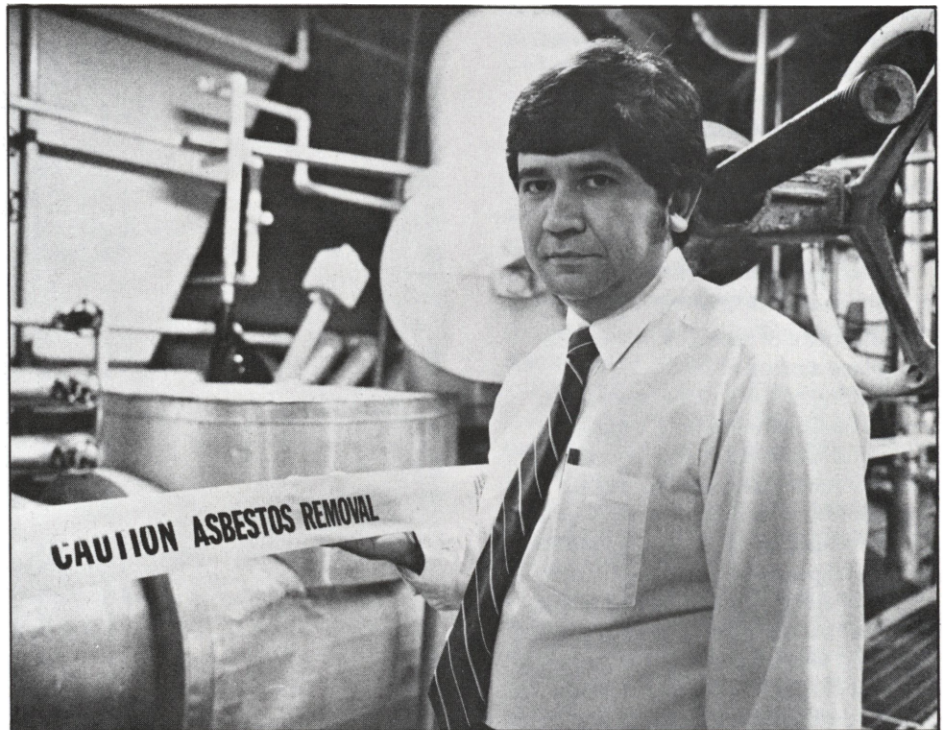
The Plant Betterment Division, which includes personnel at Braunig Environmental Lab, the Boiler Maintenance Section of the Power Plant Maintenance Division and Mission Road Construction Center's Underground Section do an outstanding job of complying with EPA and Task Force regulations, Smith said.

Power Plants

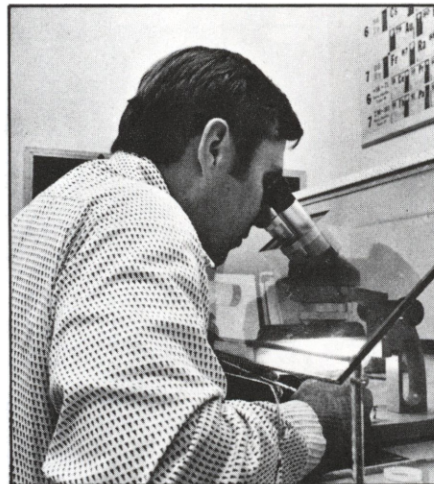
At the request of the Task Force, the Environmental Laboratory increased the number of laboratory analyses. No maintenance work requiring the removal of insulation occurs without first examining the material for the presence of asbestos.

Laboratory personnel include **Wes Dorsett**; Supervisor of the Environmental Group; **Margaret Newberry**, Environmental Analyst; **Clarence Ciomperlik**, Senior Engineering Technician; **Ruth Asher** and **Gerald Spencer**, Laboratory Analysts; and **Juan Morales**, Laboratory Assistant.

When a sample tests positive, the Boiler Maintenance Section headed by **Don Pfeil**, General Foreman, and **Jimmy Norment**, Supervisor of Boiler Maintenance, marks the corresponding section of insulation with red paint, wets the insulation and takes other necessary precautions.



Palacios makes sure that caution signs are placed in areas where asbestos is being removed.



Ciomperlik analyzes a sample of power plant insulation to determine its composition. This is standard procedure before beginning maintenance work.

Underground Electric Network

Another major abatement project is the removal of fireproofing material from the underground electric network by the Construction Department's Underground Section. The crew installs a

fireproofing tape made of glass fabric to replace the asbestos insulation. Thus far, the team has removed 12 tons of asbestos and is scheduled to complete the removal of 30 more tons in two year's time, according to General Foreman **Glenn Caldwell**.

The team includes Maintenance Foreman **Don Tipps**; Fireproofers **Joe Cuellar**, **Frank Montalvo** and **David Lux**; and Crewmen **Juan Zavala**, **Oscar Orozco** and **Santos Hernandez**.

Other employees who offer assistance at both the power plants and in the underground electric network are from the Safety and Health Section at Salado Street. The Training Division of Salado Street also prepared a videotape to train workers on asbestos removal procedures, terms pertinent to abatement and medical surveillance.

Asbestos abatement is a highly complex process. But with an interdepartmental effort, CPS will continue not only to comply with local, state and federal regulations but to modify and improve its abatement procedures in the interest of making the workplace safer.

TDD Communicates with Deaf



The newly-acquired Telecommunication Device for the Deaf enables hearing-impaired customers to call CPS.

With CPS' recent installation of a Telecommunication Device for the Deaf (TDD), hearing-impaired customers can now better communicate with CPS about their gas and electric service.

CPS joins the San Antonio Police and Fire Departments, Southwestern Bell and KMOL-TV in receiving messages from and "speaking to" the deaf.

The TDD, located in the Telephone Contact Section, Tower Life Building, looks like a typewriter. It communicates with other TDD units via a telephone line. The sender fastens his telephone onto the TDD and types out a message. CPS at the other end receives the message as a visual display which can be

recorded on a printout sheet.

"This device permits hearing-impaired customers to communicate via keyboard, printout and display through a designated telephone line," said Supervisor of Telephone Contact **Clay Kruse**. "It's one more service to provide maximum accessibility for our customers."

The CPS hearing-impaired number, which will be printed on CPS customer bills, is **225-2249**. The line will be available 8 a.m. to 8 p.m. Monday through Friday and from 8 a.m. to 5 p.m. on Saturdays.

Prior to the installation of the TDD, Church's Fried Chicken's "loveline" would call CPS and relay messages from

the deaf. "Loveline" (Lend Our Voices and Ears) is a free community service for the deaf staffed by volunteers. It has been in existence about three years.

Customer Contact Clerk **Pat Herrera**, Tower Life Building, suggested CPS install the TDD after seeing how useful the device has been at home for her two hearing-impaired sisters.

Assistant Supervisor of Customer Information **Sam Gardner** processes TDD calls, but eventually all Telephone Contact supervisory personnel will be trained to use the device, according to Kruse.

Rivercenter Mall Complex: More Power and Bus

CPS is an essential component in the growth of San Antonio. The availability of electricity has made the Rivercenter Mall a reality. The new mall, scheduled to open in February, 1988, is another step for progress in the revitalization of downtown San Antonio.

IH 35, IH 37 and US. Highway 281 will provide direct access to the complex. A new exit ramp has been constructed at Crockett Street.



Business to Downtown

by Irma Orozco

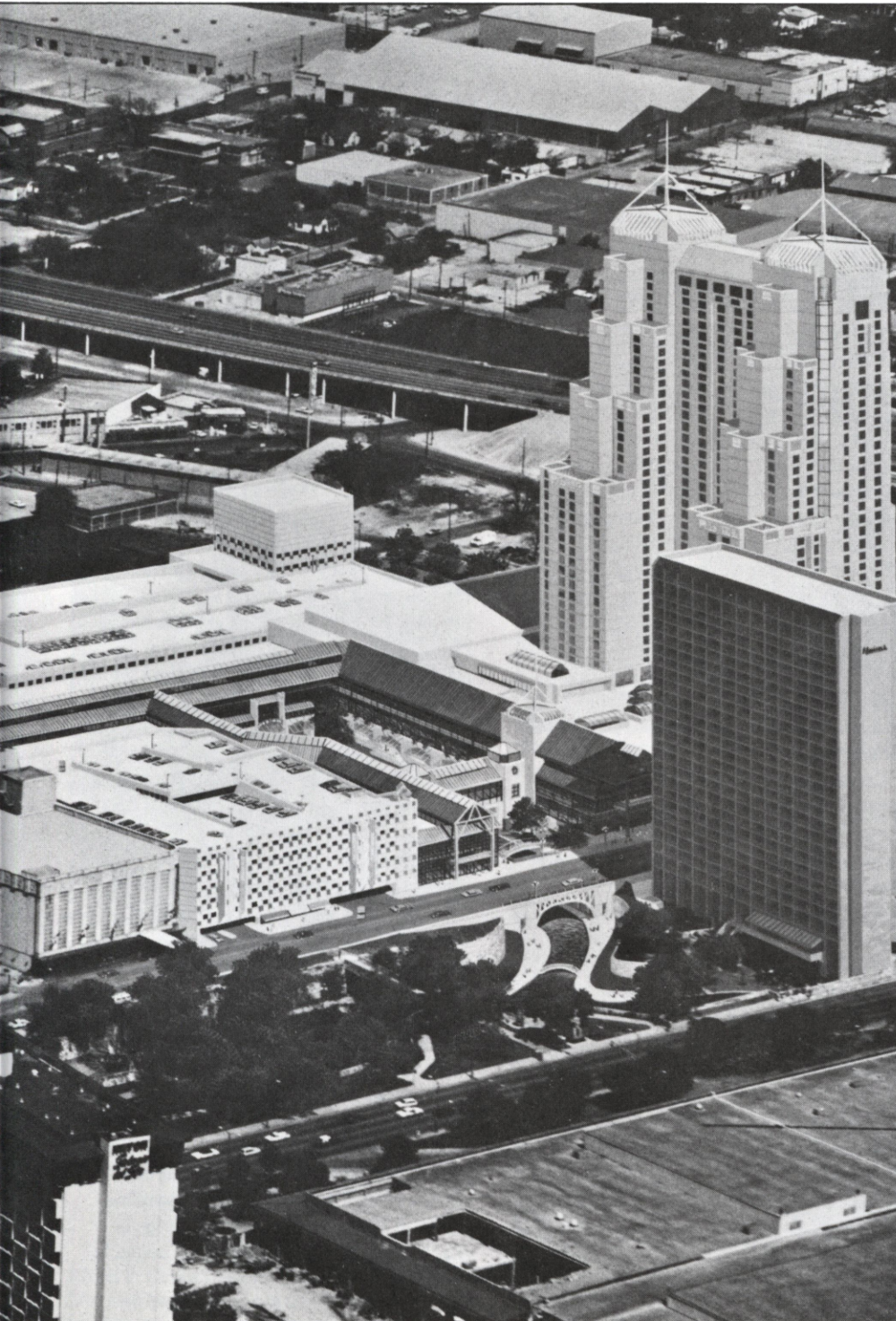


Photo Courtesy of The Edward J. DeBartolo Corporation

Downtown business districts nationwide have suffered ever since developers began moving commerce to suburban America in the 1960s. A decade later, the well stocked, one-stop neighborhood shopping centers with ample parking were decisive in taking business and shoppers from the downtown area.

Although the San Antonio inner city relishes historical landmarks such as the Alamo and the Spanish Governor's Palace, the downtown district is basically left to office workers on week days and tourists on weekends.

The Rivercenter Mall Complex, presently under construction behind the Alamo, hopes to change this, bringing business and residents back to San Antonio's core.

To make possible the public/private venture between the City of San Antonio and affiliates of Williams Realty Corp., The Edward J. DeBartolo Corporation, and Allied Stores Corporation, CPS has planned the construction of five underground transformer vaults which will service the complex. When in full operation, the complex will require 17.7 megawatts, thus increasing the present downtown electric load by one-fifth.

The project, also known as Tiendas del Rio, combines the idea of a Mexican marketplace on the river with a modern shopping center, as well as with a convention center and hotel space to attract both tourists and San Antonians to a revitalized downtown area. The complex's proximity to IH 37 and its two parking facilities will provide easy access and convenience to all shoppers.

The \$30 million three-story marketplace/shopping center, scheduled to open February, 1988, will house 135 stores, a combination of restaurants, entertainment spots, specialty and tourist shops and clothing boutiques. Forming part of the complex, will be the established Joske's Department Store, recently acquired by Dillard's, and the new Lord & Taylor Department Store.

continued



Hinojosa (left) and Wright (right) help lift lid off Marriott vault, so transformers can be installed.

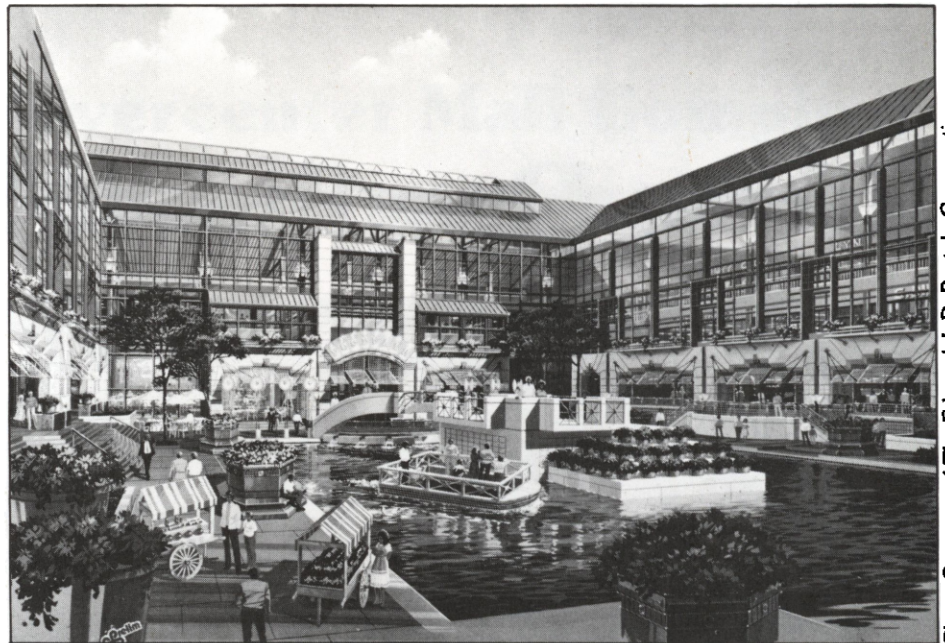
The San Antonio River, extended to lead into the horseshoe-shaped modern architectural curtain wall which encompasses the "tiendas", will carry barge passengers to the shopping center. The mall is adorned with Spanish tile and archways and lamps reminiscent of "ballet folklorico" skirts.

Another principal part of the complex is the \$80 million new Marriott Hotel which will begin operations Spring, 1989. Located at the southeast corner of the complex and across the street from the other downtown Marriott, the facility will have 1000 guest rooms, 60,000 square feet of meeting space, 40,000 square foot ballroom/exhibit space and additional conference rooms.

To prepare for the mall and the hotel, CPS with the cooperation of several departments — Transmission Engineering and Distribution, Customer Services and Construction — have provided temporary electric service and are preparing to make available permanent service by this fall.

Five CPS vaults, all on the 10-acre block, will service the project. They are the Joske's Garage vault, the Rivercenter Mall vault, the Central Energy Plant vault, the Lord & Taylor vault and the Marriott vault. Thus far, the Joske's and Marriott vaults have been completed.

Coordinating the Rivercenter Mall project is Network Supervisor **Paul Traut** whose role has been to work with



The extended San Antonio River will transport the public to the downtown mall.

Photo Courtesy of The Edward J. DeBartolo Corporation

developers in planning the location of the vaults. Construction Foreman **Armando Montez** inspects vaults to ensure that contractors meet CPS standards and specifications. Engineering Specialist **Andrew Garcia** prepares drawings for vault construction, secondary bus assembly and transformer installation and writes vault construction specifications for private contractors. Junior Engineer **Albert Lara** planned two duct-bank drawings to feed the vaults when required and Junior Engineer **David Gibbens** issued requisitions to purchase transformers.

Commercial planning such as estimating the electric load and sketches of overhead street lighting is being coordinated by Project Engineer **Russell Shrader**, Supervisor of the Project Section **Spurgeon Busby Jr.** and Director of Engineering and Technical Division **Charles Scott**.

Supervisor of Meters and Services **Tom Chadwell** coordinates with customers' engineers and contractors to ensure all electric metering installations are designed in accordance with national and local electrical codes. Construction crews under the direction of General Foreman **Jack Shelton** inspect the installation of electric metering equipment.

The Underground Crew from Mission Road Construction Center is fabricating main and secondary bus structures for the vaults. In addition the crew, headed by Foreman **Howard Strahan**, is responsi-

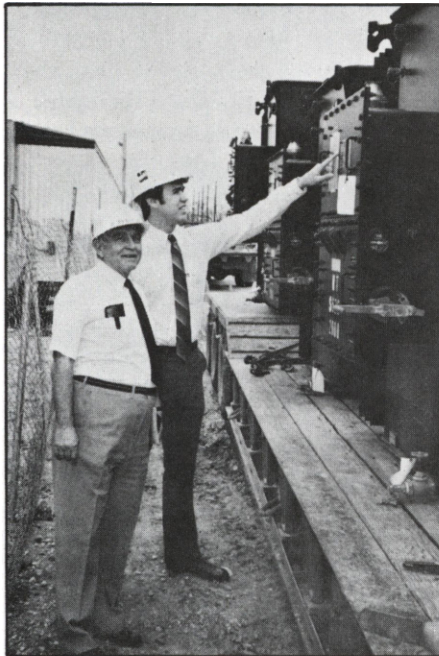
ble for the construction of the underground cable system which involves splicing cables and testing transformers and networks, as well as maintenance of the underground system. For the Joske's Garage vault the team consisted of Cable Splicers **Robert McCoy**, **Indalecio de la Pena**, **Juan Fierros** and **Michael Koepp** and Cable Splicer Trainees **Hubert Friesenhahn**, **Larry Lichey**, **David Larocque**, and **Albert Garza**. At the Marriott, the crew members were Cable Splicers **Mike Krisak**, **Gene Keil**, **Alfonso San Miguel** and Cable Splicer Trainees **Richard Garcia**, **Richard Shriver**, **Peter Freddie**, **Jon Moriarty** and **Raymond Madrigal** and Electrician Foreman **Mike Mahurin**.

Installing the vaults is the Heavy Hauling Crew from Mission Road Construction Center. Crew members for the Marriott vault were Crew Foreman **Joe Bermea**, Assistant Crew Leader **Ivan Hinojosa**, Utility Workers **Don Little** and **George Wright**, Equipment Operator **John Chessher** and Heavy Truck Driver **Jose Delgado**.

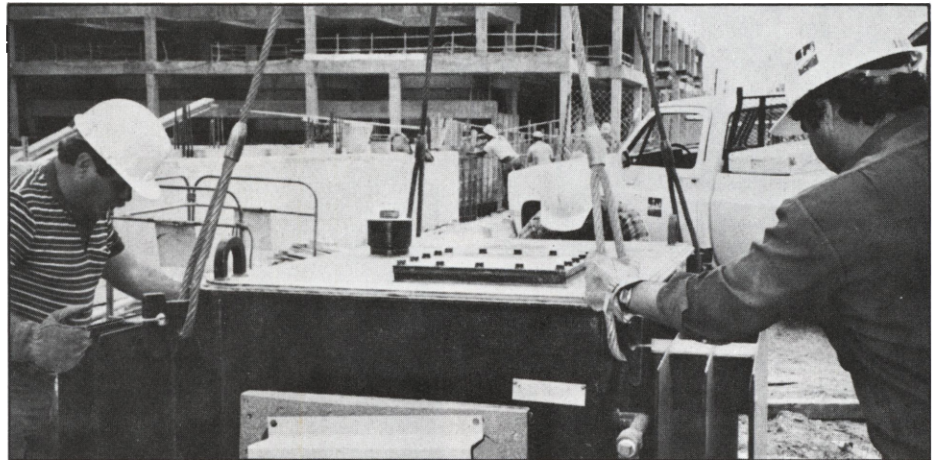
Although the Rivercenter Mall Complex is still under construction, CPS will continue to work side by side with complex builders to provide permanent electric service by fall. By meeting this deadline, CPS will be instrumental in helping revitalize the downtown area with projects such as this one.



Construction Foreman Armando Montez (center) clarifies questions on vault drawings with Garcia (right) and Traut.



Gibbens (right) and Traut inspect 2000-kilo-volt transformers which were lowered into the Marriott vault.



Heavy Hauling Crew members Little (left) and Bermea (right) guide transformers in one of the River Center vaults.



RIGHT: Crain Operator John Chessher lifts and manuevers transformers into the vault.

Scene at CPS

Tackling Technology



Supervisor of Information Center Burt Bormann conducts the final Applications Systems presentation in the conference room at the Villita Assembly Building.

Change — Upgrade — New Technology.

Coping with those terms and their implications has become a day-to-day challenge for those in the computer industry. Talk to anyone in CPS' Data Processing Services Department. They'll confirm the tough job of staying on top of developing technology. But Data Processing makes keeping up with the latest computer hardware and software for its hundreds of users throughout the utility a great deal easier through a series of recent informational programs.

"Our Applications Systems Presentations give us the opportunity to bring CPS personnel up to date on both the changes in the industry and new developments within CPS computer operations," said Applications Systems Director **Gene Stanush**. "These mini-classes, which began three years ago, also help our department tremendously by allowing us to learn from the comments and suggestions of the user areas who actually put the hardware and software to work. By understanding the problems

they face, we are able to tailor computer applications for better overall company productivity. Everyone seems to enjoy and benefit from this open-forum type of communication."

The presentations covered a wide variety of topics including applications in accounting, purchasing, construction, payroll, health care, meter reading, customer services and railroad car management to name a few.

Safety Seminar

The recent 16th Annual Youth Safety Seminar drew a record number of grade-schoolers, according to the Public Safety Awareness Supervisor **Louise Rawlings**.

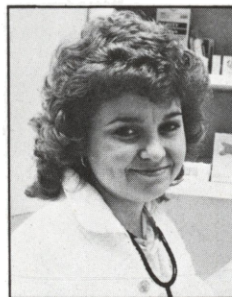
CPS along with the San Antonio Fire and Police departments participated in the two-week program sponsored by the Greater San Antonio Safety Council and the Bexar County Medical Auxiliary.

This year CPS gave 91 twenty-minute presentations to 3,425 third through fifth grade students on the subjects of electric and natural gas safety. In addition to the video "Play It Safe Around Electricity," CPS personnel displayed overhead and underground power lines, a residential padmount and sample signs placed at electric substations. They also showed some of the safety equipment furnished to CPS employees.

On hand for the CPS presentations were Rawlings; Public Safety Awareness Representative **Betty Williams**; and Consumer Services Representatives **Tommy Ortiz, Adolph Woods, Diana Gray, JoAnn Boehlert** and **Jean Sondley**.

Other topics of interest offered by the Police and Fire departments included traffic safety signs, latch-key children, fire safety in the home, and how to spot potential child molesters. Captain G.E. Matheny, retired police officer, talked to the children about shoplifting.

Botto Elected



Gloria Botto, Occupational Health Nurse, Salado Street, has been elected president of the San Antonio Association of Occupational Health Nurses.

A CPS employee since 1985, Botto, intends to increase public awareness of the role of the occupational health nurse. Botto, a registered nurse, received her training at the University of Texas Health Science Center School of Nursing.

Also active in the local organization are Head Nurse **Jean Horton** and Occupational Health Nurse **Claudine Michalek**, both of the Salado Street Center.

Scene at CPS

Outstanding Students



Pictured are Wendy Schnitz (left) with parents, Glenda and Don Schnitz, after TSPE scholarship presentation.



Muriel Rhoder/Major (center) was also accompanied by her parents, Geral and Al Major, at the awards banquet.

Two young ladies whose parents are employees of CPS were among five outstanding high school students to be awarded scholarships by the Bexar County Chapter of the Texas Society of Professional Engineers (TSPE). They are Wendy Schnitz, daughter of Manager of Gas Engineering and Fuels **Don Schnitz**, and Muriel Rhoder/Major, daughter of Public Relations' Photo Journalist **Al Major**.

In addition to her TSPE scholarship, Major also received a four-year \$20 thousand scholarship from Texas A&M

and will study chemical engineering. Graduating magna cum laude from Madison High School, she also distinguished herself by earning the National Association for the Advancement of Colored People Fred Patterson Award.

Wendy Schnitz is a graduate of East Central High School, where she was also named magna cum laude. Schnitz was awarded a four-year \$10 thousand Presidential Scholarship from Texas A&M, where she will major in mechanical engineering.

Brand Named 'Boss of the Year'



Brand

A new plaque hangs in a place of prominence on the wall of **Sandra Brand's** office in Telephone Contact at the Tower Life Building. It proclaims Brand as recipient of the 1987 "Boss of the Year" Award presented by the Amistad Chapter of the American Business Women of America (ABWA).

Shirley Witt, Telephone Contact Representative, nominated Brand who is the second in her section to receive the ABWA title. **Pete Bernal** was named ABWA "Boss of the Year" in 1984.

In addition to her 18-year career at CPS, Brand takes part in fund-raising activities for the American Heart Association, Muscular Dystrophy Association, the March of Dimes and other groups. Nights, she attends San Antonio College accumulating credits toward a degree in management.

Brand is a Unit Supervisor in Telephone Contact, part of the Customer Contact Division in Customer Services. Her boss, **Clay Kruse**, is the Section Supervisor. There are five Unit Supervisors in all: Brand, **Pete Bernal**, **David Mellene**, **Loren Friesenhahn**, and **Tony Gonzales**. These people supervise the 77 Telephone Contact Representatives who answer 5,000 customer calls daily.

"Sandra should be commended for dedication to her job and for helping establish a favorable image for CPS in the community," said Kruse.

Scene at CPS

Wedding Bells

Best wishes to:

Main Office

- Elizabeth and Shawn Engel.
- Robin and Robyn Baker.
- Margaret and Buddy Howard.
- Arlene and Mike Silva.
- Sarah and Gary Orth.

Tower Life Building

- JoAnn and Hector Florez.
- JoAnne and David Torres.
- Freda and Kenneth Atkinson.

Customer Service Center

- Teresa and John Horton.
- Michelle and Terry Price.

Telephone Contact

- Tina and Lester Pacheco.

Mission Road Customer Center

- Edith and Dennis Droomgoole.

Jones Avenue

- Monica and Timothy Pollok.

Graduate Photographs

The Broadcaster staff is planning to publish its traditional graduate issue in the May-June edition of **The Broadcaster**. Employees are reminded to submit photographs of sons and daughters who are graduating this May from either high school or college to **The Broadcaster** office, River Level, Main Office, no later than **May 22, 1987**. The photographs should be accompanied by the following information: Name of Graduate, School, City, Degree Obtained, Name of Parent Employed by CPS and Parent's Work Location. Special awards and honors may also be included. For more information call Ext. 2546.



Sharron Melton, daughter of Data Entry Operator Lavada Melton, is the 1987 Miss T.E.E.N. (Teens Encouraging Excellence Nationally). The 17-year-old Clark High School senior will compete for the state title on Labor Day weekend. Melton also won the Youth Fitness Award of the 1987 Texas Junior Miss Contest held last summer.

Customer Contact

by Patricia Herrera, Ext. 4437

Family members of the late **Dorine Webb** greatly appreciate gifts from CPS employees.

Evelyn Escobedo, daughter of **Josephine Escobedo**, was recently inducted into the National Honor Society at Incarnate Word High School.

Stop Shock Award

CPS was recognized once again for its outstanding safety record, when Safety Supervisor **Kenneth Gayle** recently accepted the Stop Shock Safety Award at the annual meeting of the Southwest Electric Safety Exchange in Albuquerque, N.M.

Stop Shock is given in recognition of a year or more with no disabling injury as a result of an electrical accident.

Ernest Persyn is CPS' Safety Coordinator, working with Safety Supervisors **Kenneth Gayle**, **Vernon Hester** and **Ruben Wilborn**, all of Salado Street.

Honors for Biggs

Glenn Biggs, former CPS Trustee Chairman, has been nominated by the American Public Power Association (APPA) to receive their Spence Vanderlinden Public Official Award. This award, which recognizes service to APPA by an elected or appointed official, will be presented during the APPA National Conference, May 18-20 in San Antonio.

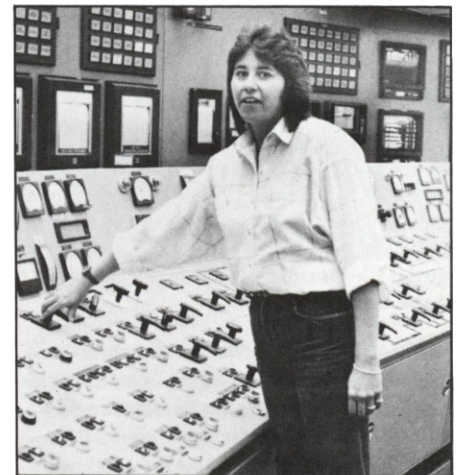
APPA is a national organization composed of almost 2,000 member electric systems. General Manager **Jack Spruce** was its 1984-85 president.

Biggs recently concluded distinguished service of more than 12 years with the CPS Board of Trustees.

Mission Road Center

Josephine Martinez, Ext. 4213

Victor and Anna Marie Orozco are driving around in a brand new 1986 Buick Skylark.



One of 30 Control Room Operators at Braunig Plant, **Vickie Moore** is the first woman to run the 890-megawatt plant. A native of Bristol, Va., Moore joined CPS in 1980 as a Coal Operator. In April of 1983, she became an Ash Operator and six months later she entered the power plant control room as a Turbine Tender. Last fall, Moore was promoted to Control Room Operator.

Scene at CPS

Red Cross Recertifies 17 CPR Instructors



Nurse Botto practices mouth-to-mouth resuscitation on mannequin as Safety Specialist Von Schounmacher instructs Nurse Michalek on how to check a pulse.

"No pulse. Call EMS," directed Occupational Health Nurse **Gloria Botto** as she checked the pulse of a "victim."

This is one of the many procedures learned by 17 CPS employees who were recently recertified as Cardiopulmonary Resuscitation (CPR) instructors by the American Red Cross.

The recertification techniques, which are now standard training methods adopted by the American Heart Association, involve the use of mannequins with simulated pulses as well as simplified non-technical teaching materials to ensure a higher retention level.

"Individuals make a difference. If more people knew CPR, more lives would be saved," stated Red Cross Volunteer Safety Specialist Jim Von Schounmacher, who taught the recertification course. "About 540,000 persons in the United States die of heart attacks each year, and half that number pass away on their way to the hospital."

"I am impressed with the caliber of

CPS staff. CPS should be commended on its support of CPR training which is beneficial to both the organization and the employee," Von Schounmacher noted.

The recertified instructors are Instrument Tester **Vernon Gray**, Jones Avenue; Service Crew Foreman **Raymond Moczygmba** and Serviceman **Frank Hunter**, Southwest Service Center; Main Crew Foreman **Marvin Jarzombek**, Operations Serviceman **Arthur Gray** and Lineman **Fred Rohde**, Eastside Service Center; Lineman **Harvey Sassman** and Main Crew Foreman **Gerald Day**, Northwest Service Center; and Cable Splicer **Joseph Krisak** and URD Foreman **Mike Smith**, Mission Road Construction Center.

Also, Head Nurse **Jean Horton**, Occupational Health Nurses **Claudine Michalek** and **Botto**, Conference Leader **Rick Putnicki**; and Safety Supervisors **Vernon Hester**, **Kenneth Gayle** and **Ruben Wilborn**, all of Salado Street.

Deaths

The **Broadcaster** joins other CPS employees in expressing deepest sympathy to:

- the family and friends of **Anna Belle Foster**, who retired from the Customer Services Department in 1957.
- the family and friends of **Vicente Mendoza Palencia**, who retired from the Operations Department in 1971.
- the family and friends of **Jurd G. Osburn, Jr.**, who retired from the Financial Services Department in 1981.
- the family and friends of **Alfred G. Welch**, who retired from the Operations Department in 1973.
- the family and friends of **David H. Lilley**, Utility Worker, Salvage Section, Tuttle Plant.
- the family and friends of **Dorine Webb**, Clerk III, Customer Services.
- the family and friends of **Gerald J. Castro**, Clerk, Salado Street Storeroom.
- **Jose G. Hernandez**, Janitor, Northwest Service Center, on the death of his father, Mr. Ramon Hernandez.
- **Bill Reichert**, Gas Operations Engineer, Jones Avenue, on the death of his father, Mr. William Frederick Reichert, Sr.
- **Clayton Wall**, Director of Field Services, Customer Services, on the death of his sister, Mrs. Avis Edwards.
- **Richard Diaz**, Clerk, Main Office, on the death of his mother, Mrs. Antonia Diaz.
- **Vernon Hester**, Safety Coordinator, Salado Street, on the death of his father, Mr. Vernon Hester.
- **Ernest Gragg**, Supervisor of Special Rates, Main Office, on the death of his mother, Mrs. Inez D. Gragg.
- **Raul M. Arriaga**, Clerk III, Main Office, on the death of his father, Mr. Manuel L. Arriaga.

Scene at CPS



Welcome to the following new employees:

Customer Services

Theresa Romo, Clerk I; **Jay Govan**, Clerk I; **Deborah Nielson**, Clerk I; **Roselva Yamauchi**, Clerk I; **Cindy Servin**, Clerk I and **Frank Herrera**, Meter Reader.

Administrative Services

Francisco Cazares, Clerk II; **Jimmy Malish**, Clerk I and **Raymond Robinson**, Clerk I.

Materials and Transportation

Robert Trevino, Car Washer; **Ronald Koopp**, Garage Trainee; **Ken Van Overborg**, Utility Worker and **Karen Bloxham**, Utility Worker.

Personnel Services

Thomas Van Winkle, Parking Cashier; **Francis Rivera**, Parking Cashier; **Willie Daniel**, Parking Cashier and **Felton Smith**, Parking Cashier.

Construction

Theodore Brown, Utility Worker.

Financial Services

Allen Wade, Forecasting Analyst.

Gas Engineering and Fuels

Paul Castillo, Draftsman I; **Gilbert Lujan**, Draftsman I and **Lisa Wright**, Engineer.

Power Plant Engineering and Production

Robert Peterson, Coal Yard Operator and **Michael Pilsner**, Coal Yard Operator.

Data Processing Services

Tho Ha, Programmer Analyst and **Charles Schoffstall**, Programmer Analyst.

Personnel Administration

Mary Lay, Clerk I and **Alfred Villasenor**, Training Specialist.

Customer Service Center

by Jennifer Bierstedt, Ext. 2253

Honey Diebel, daughter of Lillian Diebel and Michael Arredondo, son of Edna Arredondo, are members of the National Senior Honor Society at Nimitz Jr. High School.

2nd Floor, Main Office

by John Brogan, Ext. 2573

Andrew and **Rosemary Garcia** have two new pet dogs, Royce and Frances... **Albert Lara** was appointed Nuclear Biological Chemical (NBC) Officer in the Texas National Guard in which Lara is 2nd Lieutenant.

Tom Chadwell and family have adjusted to their new home, but his cat is protesting with all-night escapades... **Larry Bienek** and **Ervin Wegner** are proud of the fish they caught at Calaveras Lake.



CPS Club presidents for 1987: (front row) Adolfo Flores, Sportsman's Club; Danny Delgado, South Side Club; Randy Wolff, North Side Club and James Dorton, Goodfellowship Club. (back row) Louis Lassiter, Kilowatt Club; Bill Hasenbeck, Live Wire Club; Daniel Laskowski, Mission Center Club; Ivan Hinojosa, Latin American Club and Richard Rodriguez, Better Service Club. (Not present were Mark Doege, East Side Club; Ernesto Alonzo, East Side Latin Club and Carlos Tufino, Amistad Club.)

Scene at CPS



Congratulations to the following employees on their recent promotions:

Personnel Administration

Rosa Rios, Clerk II and **Cheryl Dziuk**, Secretary/Director.

Data Processing Services

David Camarillo, Computer Operator I.

Power Plant Engineering and Production

John Ruckman, Analyst; **Clinton Jenschke**, Welder Foreman; **Gordon Ellis**, Maintenance Scheduler and Coordinator; **Herman Koenig**, Electrician Foreman; **Opal Jackson**, Control Room Operator; **Jim Weatherly**, Electrician Trainee; **Kenneth Bass**, Electrician Trainee; **Abel Arce**, Welder Trainee and **Jay McGuffin**, Machinist Trainee.

Construction

Patrick Traugott, General Foreman; **Michael Urtiaga**, Utility Worker and **Donald Bernard**, Main Crew Foreman.

Materials and Transportation

Michael Heath, Warehouseman.

Personnel Services

Eduardo Guerra Jr., Maintenance Man I; **David Jones**, Cook I; and **Josephine Aleman**, Cook II and **David Cantu**, Lead Parking Cashier.

Customer Services

Spurgeon Busby, Project Engineer and **Annie Sanchez**, Assistant Supervisor of Cashiers.

Administrative Services

Mary Urrutia, Secretary/Director.

Operations

Eugene Mayberry and **Robert Garcia**, Crewmen I.

Gas Engineering and Fuels

Terumi Flores, Secretary/Manager.

9th Floor, Main Office

by **Mona Flores**, Ext. 2104

Anita Valdez, was appointed Secretary of the Burbank High School Booster Club...**Argelia** and **Armando Garcia** enjoyed a weekend trip to Houston.

10th Floor Main Office

by **Kathy Yates**, Ext. 2069

Olga Morales for the past five years has served as secretary to four managers — **John G. Mack**, **James W. Pettinos**, **Robert J. Costello** and retired **Robert C. Mecke**. Her career at CPS spans 14 years, nine of which she spent in the Engineering Steno Pool. She lives in Lytle with her husband, **Sisto**, and her two-year-old, **Rosenda**. **Morales** obtained an associate's degree in Business Technology while working in the Personnel Department at Kelly Air Force Base. Her

hobbies include sewing and playing the piano.

Nancy Wacławczyk recently returned from a ski trip to Winter Park, Colorado without a mishap.

River Level Main Office

by **Patty Gonzales**, Ext. 2107

Assistant Coach **Rodolfo Longoria's** Pee-Wee basketball team won the CYO Zone III Championship.

"The secret is in the bait" says **Pat Curtis**, who with her husband **Tom**, have been successful at fishing at Braunig Lake recently.

Consumer Services

by **Jean Sondley**, Ext. 2832

Diana Gray has been selected by Dillard's Department Store to model upcoming spring fashions.

Tower Life 1st Floor

by **Norma Sandoval**, Ext. 2733

David Martin, **Jim Krause**, **Alta Anderson**, **Ray Jean Gaston** and **Mary Flores** are getting settled in their new homes.

Norma Sandoval and her daughter, **Melissa**, traveled with Wheatley High School Pep Squad to Mexico City.

Mission Road Customer Center

by **Annett Cerda**, Ext. 4738

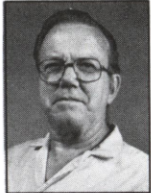
Sharon Barden, **Norma Baney**, **Patricia Rosas** and **Annett Cerda** participated in the March of Dimes WalkAmerica.

Charles Neumann reports success in the recent wild hog hunt...**Bruce Harmon's** daughter, **Rebecca**, married **Waldo Rodriguez** recently.

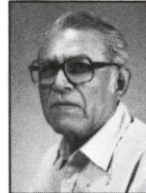
Scene at CPS



Retirements



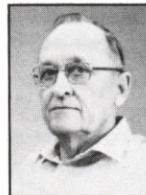
Edward O. Markgraf, Planning and Scheduling Clerk, Jones Avenue, started his career at CPS as a Cable Splicer Trainee at Jones Avenue in 1954. He moved from Apprentice Cable Splicer in 1965 to Time and Material Clerk in Substation Construction. He was promoted to Clerk in 1970. Markgraf and his wife, Mildred, will be spending more time working on their retirement home in the country outside Center Point.



Mercedez C. Valdez, Assistant Tool Shop Repairman, Mission Road Construction. Born in La Vernia, Mercedez and Maria Valdez live there today, and their six children graduated from the local high school. Valdez came to work in 1961 wrapping pipe at Salado Street. He was promoted to Special Laborer, and then to Utility Worker IV at Mission Road. In his spare time, he does carpentry and works on cars.



George W. Flynn, Time and Material Clerk, Eastside Center. Born in Tracy City, Tenn., Flynn grew up in Hot Wells, Texas, and came to work for CPS as a Helper in the Electric Department in 1953. He was promoted to Time and Material Clerk in 1960. He and his wife, Gloria, have three grown children: Mike, Marcia and Scott.



W.G. (Willie) Goesch, Maintenance Foreman, Mission Road Construction, signed on 41 years ago as a Helper in the garage at Jones Avenue, in the Gas Department. He moved up to Tool Repair Man, and then to Maintenance Foreman in Electric Construction. A native of Shiner, Texas, Goesch served in the Air Force during World War II. He and his wife, Delores, have four children. Beverly and Dwight are both graduates from A&M. Another daughter, Alma, is a graduate of Texas Lutheran College. The youngest, William, recently graduated from Harlandale High School.

Lester W. Gutz, Supervisor of Operations Services, Northwest Center, began his CPS career as a Helper in the Gas Department in 1952. He moved up to Apprentice Meterman in 1956, and to Meter Setter in 1957. He served for 10 years as a Troublemaker before being promoted to his present position.

New Arrivals

Congratulations to:

Main Office

- **Mona and Adolph Sandoval**, on their son, Blaine.
- **Sam and Carlette Dotson**, on their daughter, Brittany Marie.
- **Bonnie and Armando Soto**, on their daughter, Kimberly.
- **Sharon and Ron Cordes**, on their daughter, Brandy Nicole.
- **Marilyn and Jim Gladson**, on their daughter, Bethany Anne.
- **Larry and Gloria Bienek**, on their

daughter, Lauren Elise.

- **Willie and Helen Mata**, on their son, Kenny.
- **Margaret and Gabriel Medrano**, on their daughter, Deseree Michell.
- **Rosie and Chuck Ervin**, on their daughter, JoAnn Nicole.
- **Eddie Arguello**, on his grandson, Edward Anthony Arguello III.

Mission Road Customer Service Center

- **Norma Baney**, on her daughter, Kelly Michelle.
- **Richard and Kozette Bonham**, on

their son, Richard Jr. **James Dowlearn**, of the Deely Plant, is the proud grandfather.

Tower Life Building

- **Linda and John Chavez**, on their daughter, Vanessa Nicole.
- **Norma and Richard Garcia**, on their son, Richard Matthew.
- **Cheryl and Johnny Williamson**, on their daughter, Amber Lynn.

Salado Street

- **John and Kathy Jones**, on their daughter, Kimberly Amanda.

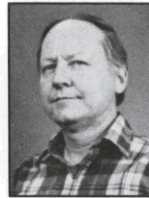
Spotlight on Service

**35
Years**



Nolan F. Dye
Eastside Center

**25
Years**



Roger L. Klaerner
Braunig Plant

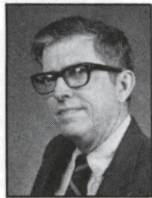


Francisco H. Martinez
Tuttle Plant



Donald R. Henze
Salado Street

**15
Years**



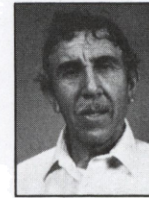
Glenn L. Poteet
Main Office



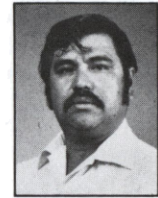
Catarina S. Valdez
Main Office



Julia Benavides
Customer Service
Center

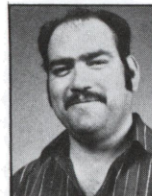


Benito G. Gomez
Northwest Center

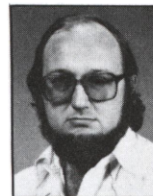


Jose R. Sanchez
Southwest Center

**5
Years**



Mario J. Gutierrez
Deely Plant



George D. Hoesen
Sommers Plant



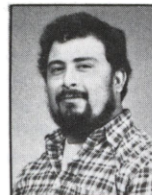
Robert L. Ulrich
Braunig Plant



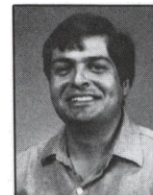
Stanley G. Whiting
Sommers Plant



Janie Alvarado
Main Office



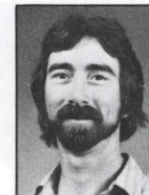
Steve R. Tejada
Southwest Center



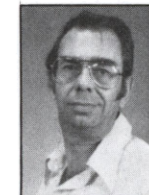
David R. Mireles
Southwest Center



Frank R. Guerrero
Southwest Center



James R. Center
Mission Road



Frederick G. Jurman
Tower Life Building



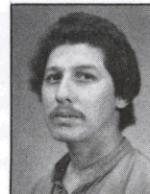
Kenneth E. Ellis
Tower Life Building



Angelyn Huntington
Main Office



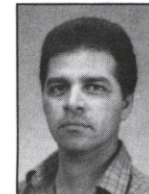
Debra A. Rubalcava
Main Office



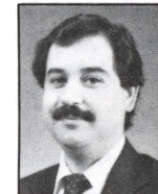
Alfred L. Garcia
Jones Avenue



Gloria O. Esquivel
Main Office

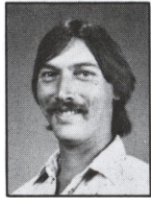


Julian Escobedo
Northwest Center



Frederick A. James
Main Office

Spotlight on Service



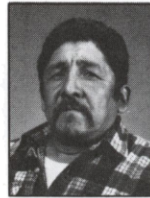
Randolph K. Radke
Sommers Plant



Efren R. Mancillas
Southwest Center



Gilberto Encarnacion
Eastside Center



Jacinto T. Rodriguez
Deely Plant



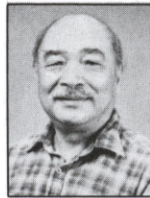
Lester J. Williams
Southwest Center



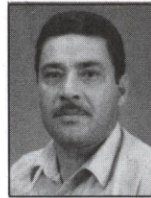
James C. Travis
Southwest Center



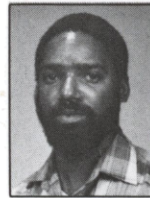
Maria G. Garcia
Main Office



Hsiu Lee
Tuttle Plant



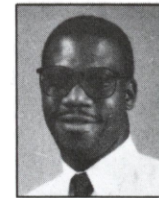
Joe R. Lopez
Northwest Center



Walter E. James
Eastside Center



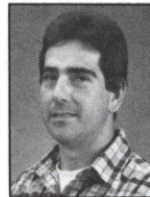
Ted M. McFadin
Main Office



Michael B. Winn
Braunig Plant



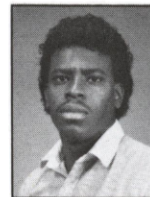
Irene Jaramillo
Tower Life Building



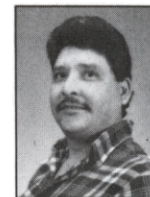
Ted L. Dromgoole
Mission Road
Construction Center



Eva S. Garcia
Main Office



Juan B. Greene
Mission Road
Construction Center



Jesse Hernandez
Jones Avenue



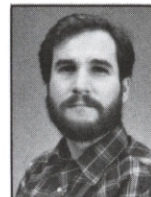
Sandra J. Cavazos
Mission Road
Construction Center



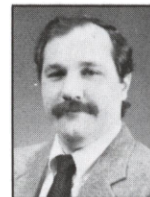
Hector V. Torres
Main Office



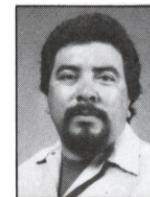
Robert E. Warren
Deely Plant



David J. Bond
Deely Plant



Tracy L. McCuan
Main Office



Raul R. Garcia
Northwest Center

The Broadcaster

...published for the employees and retired employees of City Public Service and their families.

MANAGING EDITOR

Irma Orozco

STAFF WRITER

Pat Curtis

CHIEF PHOTOGRAPHER

Al Major

GRAPHIC DESIGN

Rodolfo G. Longoria, Manuel Davila

TYPESETTING

Patty Gonzales

PHOTOLITHOGRAPHY AND REPRODUCTION

Tony Rittmann, Raymond Prouty, Lupe Anguiano, Jimmy Alonzo, David Howard

AREA REPORTERS

Main Office

Gloria Esquivel, 1st Floor
John Brogan, 2nd Floor
Bill Loftin, 3rd Floor
Janie Alvarado, 4th Floor
Lesley Lally, 5th Floor
Isabel Hernandez, 6th Floor
Hope McFadin, 7th Floor
Norma Puente, 8th Floor
David Jones, 8th Floor
Ramona Flores, 9th Floor
Kathy Yates, 10th Floor
Patty Gonzales, River Level

Tower Life Building

Ginny Babcock, 1st Floor
Norma Sandoval, 1st Floor
Jean Sondley, Mezzanine
Gloria Lopez, Mezzanine
Zelma Turner, 6th Floor

Customer Service Center

Jennifer Bierstedt, 1st Floor
Pat Herrera, 2nd Floor

Salado Street

Diana Maycott

Jones Avenue

Rosemary Fanner, Ed Carlucci

Mission Road Customer Center

Annette Cerda

Mission Road Center

Josephine Martinez

Eastside Service Center

Melissa Oliver

Eastside Customer Service Center

Carol Brooks

Northwest Center

Bonnie San Miguel

Southwest Center

Mary Martinez

Westside Customer Service Center

Rose Menchaca

Meter Reading

Leslie Saenz

Braunig

Leroy Sellers

Deely Power Plant

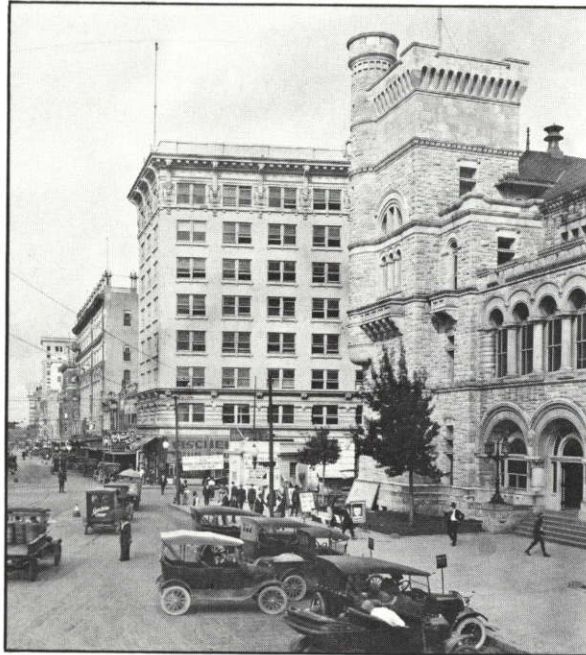
Sharon Dibrell, Linda Delosh

Tuttle

Alicia Gomez

Mail all correspondence to **The Broadcaster**, River Level, Main Office, or call Ext. 2490 or 2546. **The Broadcaster** is produced by City Public Service's Public Relations Department, P.O. Box 1771, San Antonio, Tex., 78296.

Remember When...



The San Antonio Post Office (right) was one of the first to contract electrical service in 1889 — only ten years after the invention of the light bulb. The service was provided by the San Antonio Electric Company, one of several utilities which consolidated to form San Antonio Public Service Co. in 1917. The City of San Antonio purchased the utility in 1942.

1967

- CPS, working with the Chamber of Commerce to attract new industry to San Antonio, advertised in business publications throughout the U.S. and promoted "San Antonio on the Grow"?

- CPS radios picked up stations from New York to Guatemala? The trouble, explained Communications Engineer **Bob Mecke**, was the low frequency systems serving the 294 mobile units, autos, trucks and other CPS equipment. Those systems were converted to the higher, 450 megacycle band in 1969.

- **Gene Stanush** was selected one of six new members of the Management Information Team?

- Gas and Electric Distribution crews worked together installing electric circuits for the opening of HemisFair in 1968?

- bill payments by mail increased to more than 50% of total bills? The change was credited to mailing customer bills with enclosed return envelopes.

1972

- 300 guests were present for the dedication of the Gas and Electric Operations Center at Jones Avenue? The new computer-operated monitoring

system was a first in the utility industry.

- CPS' safety record was far above average? Employees worked 5,670,841 hours with a disabling accident rate of only 2.11 per million manhours.

1977

- **Guillermo Olivares** earned his associate's degree from St. Philip's College? He spent a couple of years on a grueling schedule: work from 4 p.m. to 12:30 a.m., and school from 8 a.m. to 1:30 p.m.

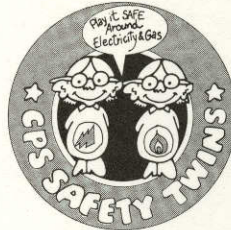
- new Employees Club officers were pictured in **The Broadcaster**? They were: **Ronnie Ezell, Manuel Davila, J.A. (Sonny) Jones, Jerry Davis, Juan Fierros, Harold Gorrell, Mike Mahurin, Charles Bradshaw** and **Emil (Buzzy) Elmendorf**.

- **Wayne Goertz** transferred from Meter Reading to Internal Auditing?

- CPS brought power to the San Antonio Ranch Development northwest of the city? **Henry Geisler** was in charge of the crew working its way through valleys and hills as high as 1,320 feet.

Lifelines

PUBLIC SAFETY AWARENESS



GAS

ELECTRICITY

- S**tay away from downed power lines
Appliances and power tools should carry a UL or AGA label
Frayed cords or wires are dangerous; have them repaired or replaced
Electrical appliances should never be used in tubs or showers
Treat gas and electricity with respect; they can be helpful or harmful
You should keep ladders, kites, antennas, and poles away from power lines
Train children to be aware of natural gas and electrical hazards
If you suspect a gas leak, call CPS immediately
Proper adjustments should be made to insure a blue flame on gas appliances
Safety around gas and electricity is our number one goal

FOR SAFETY PROGRAMS OR TIPS ON GAS AND ELECTRICITY

CALL: PUBLIC SAFETY AWARENESS

CITY PUBLIC SERVICE

227-3211 EXT. 2329

BULK RATE
U.S. POSTAGE
PAID
SAN ANTONIO, TEXAS
PERMIT No. 251

Library
St. Mary's University
One Camino St. Maria
San Antonio, TX 78284

TEXAS DEPOSITORY
ACADEMIC LIBRARY
ST. MARY'S UNIVERSITY
SAN ANTONIO, TEXAS

JUN 16 1987

The Broadcaster

PUBLISHED BY CITY PUBLIC SERVICE BOARD—P.O. BOX 1771—SAN ANTONIO TEXAS 78296

TXPUB_00098