

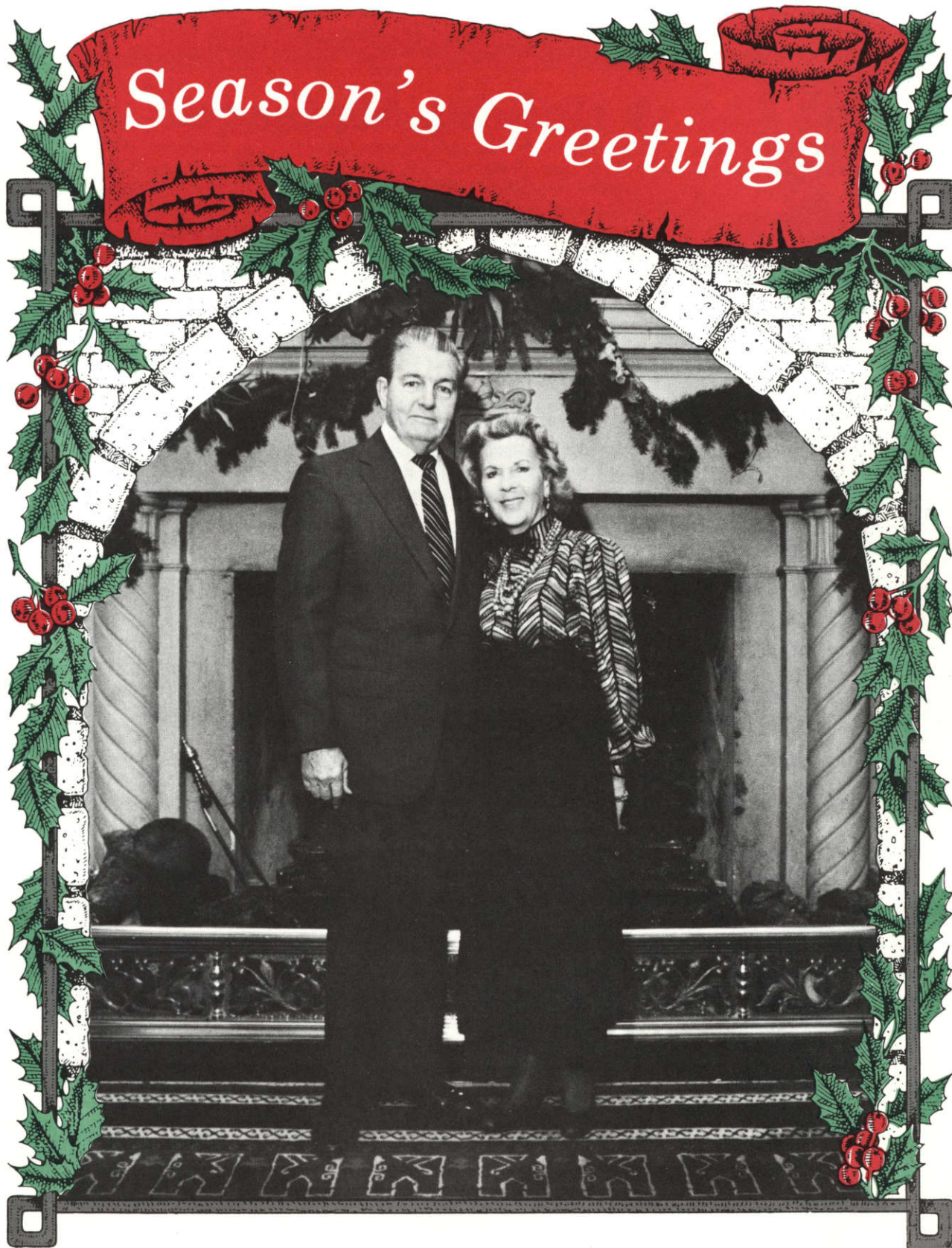
ZS 250.6 B 863 1987/Nov.-Dec.

**Tx** **The Broadcaster**

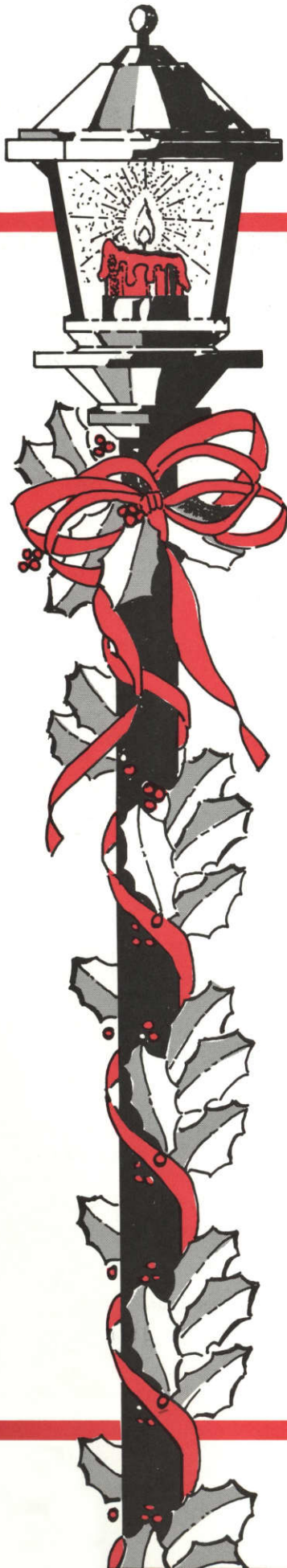
CITY PUBLIC SERVICE

SAN ANTONIO, TEXAS

NOV.-DEC., 1987







## A Holiday Message

Nearing the close of 1987 and my retirement from CPS, I would like to acknowledge the cooperation and support of CPS employees this past year, as well as during all of my tenure as General Manager. These past 11 years have been productive ones with many milestones which benefit the San Antonio area and help in fulfilling our mission of supplying adequate, reliable and cost-effective gas and electric service.

Among the many CPS achievements for 1987 was the issuance of a low-power license for Unit 1 of the South Texas Project (STP), which authorized fuel loading and low-power testing and brings San Antonio closer to receiving electricity from STP. The \$111.5 million settlement from Burlington Northern and Southern Pacific Railroads for excess rates on coal transportation will be applied to customer bills over the next seven years. In addition, initial work began on the new 500-MW coal-fired generating unit at Calaveras Lake needed by 1992 to meet San Antonio's energy requirements. In October, CPS celebrated 45 years of municipal ownership by the City of San Antonio. CPS has been powering expansion of San Antonio for 45 years and providing direct benefits through payments to the City of San Antonio and low rates to customers. City payments since 1942 have now reached \$1 billion. In another display of civic concern, CPS active and retired employees contributed \$297,772.87 to the 1987 United Way campaign.

Next year will bring new challenges, but none that employees cannot meet. I ask that you give the same whole-hearted support to the new General Manager, **Arthur von Rosenberg**, that you gave to me. The future of CPS and San Antonio looks very bright.

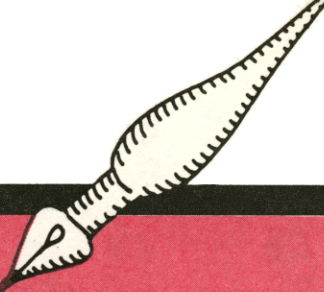
On behalf of the Trustees and management staff, I want to take this opportunity to wish you and your family a safe and joyous holiday season.

Sincerely,

J.K. Spruce  
General Manager



# Letters to CPS



## International Understanding

...from Capt. Mark Anderson, International Training Officer, Randolph AFB, about Consumer Information Representatives **Bob Mainz** and **Adolph Woods**:

"In September, I brought a small group of International Officers to visit the CPS Sommers-Deely Plant. On behalf of these officers, I'd like to express my sincere appreciation for a terrific tour. Not only did we learn a great deal about how power is generated, we also found the trip to be entertaining. Our guides, Mr. Adolph Woods and Mr. Bob Mainz, were highly skilled at breaking the highly technical world of energy into language easily understood. Please express our gratitude to these fine men."

## Good Servicemen

...from A.W. Graham, customer, to Director of Employment and Placement **Sandra Pruitt** about Northwest Service Center General Trainee **Don Schlough**:

"I want to commend Mr. Schlough for checking above and beyond the call of duty to find a gas leak in my stove connection and also for checking in a professional manner my other gas appliances, the air conditioning system, my gas wall heater and hot water heater, while he was here. I want to thank the City Public Service for having good service people."

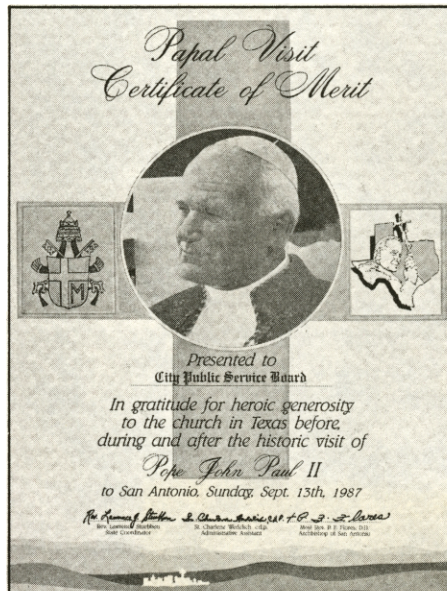
## ON THE COVER:

General Manager Jack Spruce and wife, Maurine, wish CPS employees a prosperous 1988.

## Papal Visit Certificate

...from Robert B. Aguirre, Project Manager, Papal Visit in San Antonio, to General Manager **Jack Spruce** concerning installation of temporary electric service at the papal mass site:

"If ever there was an event which drew this entire community together, I feel that it was certainly this one. Your role in achieving such a high degree of success was by no means an insignificant one. As such, we wish to recognize the City Public Service Board through the enclosed Papal Visit Certificate of Merit which we hope will be displayed proudly and as evidence to the community that your organization played a significant role in a moment in the history of San Antonio."



The Papal Visit Certificate pictured above was presented to CPS for providing temporary electric service for the papal mass celebrated on Sept. 13.

## Presidential Appreciation

...from Dr. Louis J. Agnese, Jr., President of Incarnate Word College (IWC), to the San Antonio Express/News following a meeting between personnel from IWC and CPS Principal Engineer of the Overhead Distribution Section **Marvis Hejtmancik** and Project Engineer **Leonard Mancini**:

"We had a potential problem on our West campus, where we are constructing two new student apartment complexes which we call the Village of Avoca.

"Through no one's fault — unless you want to blame Nature for the spring rains — delays occurred in construction which held up our ability to supply power to the areas around the apartments. When we explained to City Public Service that Incarnate Word College students would be parking and walking to their new homes in dark areas, and that this created a potential threat to the safety of our students, CPS responded with a determination that immediately ended the potential crisis.

"Within days, CPS crews were setting poles and running wire to the parking areas. Now that the students have returned they are able to enjoy their new apartments completely."

## Temporary Service

...from James H. Logue, customer, to Manager of Construction **Jim Pettinos** about Jones Avenue Lineman-Troubleshooter **Ralph Koenig**, who installed temporary above-ground electric service until URD made permanent repairs:

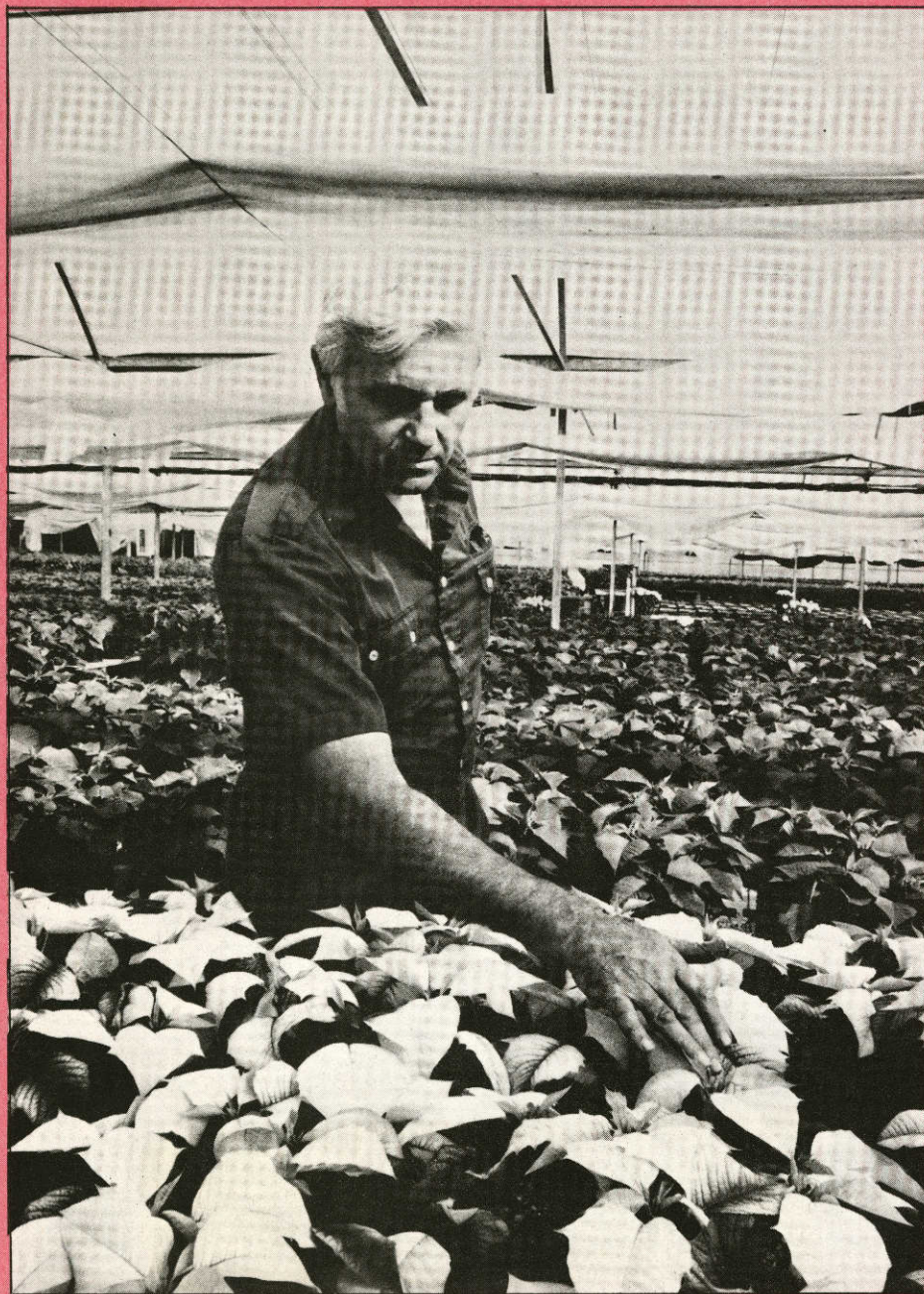
"Please convey to Mr. Ralph Koenig my appreciation for his help and courteous service he provided to me recently. He reflects positively on CPS and is an employee that you can be very proud of."



Gas Heat...

# Bringing You a Brighter Christmas

by Pat Curtis



The Dietert family has been growing poinsettias for 33 years. The white blooms in the foreground are preferred by some. Pictured is Jerry Dietert, greenhouse owner.

When winter's first "blue norther" sends CPS customers scurrying to light their furnaces, Jerry and Ralph Dietert do not worry about a sudden, devastating drop in temperature.

The brothers own and co-manage the Dietert Greenhouses on Uecker Road, near the Eastside Service Center. There they grow some 25 different flowers and 30 varieties of foliage plants for wholesale distribution to San Antonio's flower shops.

Right now, more than half of their nearly five-acre greenhouse space is devoted to poinsettias, their most important seasonal seller. Two gas heaters in each greenhouse provide heat, which is fanned the length of each building through huge plastic hoses and distributed through baseball-size holes to maintain an even temperature. A sensing device turns the heaters on automatically when temperatures drop below 65 degrees.

Maintaining the temperature level is critical during the three-month growth period of the poinsettia, says Jerry Dietert. In addition to steady heat, an electrically powered water system keeps the moisture level high, and automatic fertilizing and watering systems foster the growth of the individually potted plants.

Poinsettia trees, hanging baskets, pot plants — the sea of scarlet is a sight indeed. In addition to this perennial favorite, Dietert also grows some 5,000 chrysanthemums of all colors to meet the September through December demand. The spring crop — tulips and Easter lilies — are being precooled now in a 40-degree boxcar converted into a vault by the innovative growers. The bulbs will be ready to plant in early spring.

The growing medium is a special mixture — a soil-less soil which is mixed in a concrete mixer. The ingredients are a trade secret, according to Sharon Dietert, sales manager.



The Dietert Greenhouses have been in business 33 years, starting with a small retail shop on South Hackberry. The wholesale side of the business now supplies two-thirds of the local market. And that takes a lot of energy — about 254,000 kilowatt hours annually in electricity and approximately 77,670 hundred cubic feet of gas.

Thanks to a reliable source of energy at reasonable rates, the Dietert Greenhouses continue to flower in San Antonio.



General Supervisor Lonnie Icke checks one of two meter setups. Gas is essential to the greenhouse operation during the winter months, when temperatures must be maintained at 65 degrees.



Greenhouse owner Jerry Dietert and General Supervisor Lonnie Icke (right) in one of several greenhouses devoted to the seasonal poinsettia crop. In the background, one of the heating hoses.



# **General Manager Jack Spruce Retires**





The man who has headed City Public Service for the last 11 years will say his good-byes on December 31 and begin another phase of his life — as a retiree.

**J.K. Spruce**, the man who saw CPS through such crises as the aftermath of the gas curtailments, a lawsuit on coal hauling and delays on the South Texas Project, will leave CPS during much calmer times than when he was named to the General Manager's job in February 1976.

Some of the calm can be attributed to changing times but a major part of the improved climate is due to the personality of the man known as Jack. Those who have worked with him during the years know him as a people-oriented leader who has excelled at establishing and maintaining good relationships with others. The result for CPS has been a good working environment for employees and good relations with customers and City officials.

"He has credibility because he doesn't come across as a slick operator," said **Ben Scholl**, Superintendent of Distribution, in explaining Spruce's success in dealing with people. "I would buy a used car from him because I would be confident it would be a good car."

That credibility served Spruce and CPS well when he needed to approach City Council to ask approval for rate increases or explain the need to sell bonds. Since he became General Manager, Spruce has appeared successfully before City Council eight times to outline the case for rate increases and each time he has made some headway in forging a better relationship with the body which represents the owners of CPS, the people of San Antonio.

"Jack's laid-back, take-it-in-stride personality and approach were instrumental in getting us through some difficult times. He definitely had the right attitude and for that, I'll be eternally grateful," said Board Chairman **Earl Hill**. "That was the only way and the proper way to approach our relationship with City Council."

Spruce's success at City Council also included approval of \$2.14 billion in bond

issues which provided the financing needed to fund the South Texas Project and a construction program to keep pace with a growing community. In addition, \$828.8 million in bonds were sold to refinance, at a lower interest cost, some bonds previously issued.

During Spruce's term as General Manager, the peak demand for electricity has increased from 1,560 megawatts in the summer of 1976 to a high of 2,596 in the summer of 1986. The utility responded to this growth by adding more than 800 megawatts of capacity at the two J.T. Deely units which came on line in 1977 and 1978.

Former Board Chairman **Glenn Biggs** characterized the basis for the good relationship as integrity.

"Jack is Mr. Integrity. As he went before City Council, they might not agree with him, but the information would be factual. That fostered confidence and a good working relationship," said Biggs.

But relationships with officials were just part of the success story. Spruce also enjoyed good rapport with his colleagues and with employees he supervised.

**William Howerton**, who retired from the gas department in 1967, remembers Spruce from his earlier days when he joined CPS after World War II:

"I could see that he could handle problems so everyone was satisfied. Everyone worked together and everyone helped each other," said Howerton. "He had that ability to bring people together to solve a problem."

Scholl echoes those perceptions of Spruce as a person with good leadership skills. "He inspires peers and subordinates rather than ruling by fear," said Scholl. "I admire him more than if he were dictatorial."

Spruce's ability to deal with other CPS employees may have stemmed from his feeling that the organization was much like a second family.

"He has a knack for remembering employees' names," said Scholl. "When I show him the pictures of the 25-Year Annual Awards Ceremony, he can identify nine-tenths of the people for me. He just knows and remembers employees."

Those same ways of handling people were put to use many times during his career as General Manager when Spruce talked with customers who had problems. No matter how busy his schedule and how irate the customer, he always talked



**Jack Spruce, General Manager, (left) Howard Freeman, Assistant General Manager for Finance, (center) and Jesse Poston, retired Assistant General Manager for Operations, visited a power plant control room.**

with those who telephoned his office, realizing that those who called deserved to have his time and attention because they were CPS customers.

"The fact that the General Manager was willing to talk with them disarmed some people. Couple that with his down-to-earth desire to find solutions and you find people generally reacted positively," said **Mary Helen Breen**, Spruce's Administrative Assistant during his years as General Manager.

Other Spruce attributes that served CPS well include his attention to detail and his keen analytical mind. Spruce became known as the man who is like a sponge in soaking up all the information about a project. Those qualities served him well in dealing with complex issues such as the South Texas Project.

Biggs remembers Spruce's approach in looking at issues before he made a recommendation on the South Texas Project.

"He was not going to be stampeded. He evaluated all the issues at hand. As he looked at the information, he reached a conclusion that was based on a realistic assessment. All the long-term studies showed it (the South Texas Project) will provide needed energy for the future," said Biggs. *continued on next page*



After studying the facts and making a decision, Spruce then needed to convince others of his position and again he turned to the facts and relied on the staff work done to reach his conclusion.

Hill remembers the darkest days of the South Texas Project. "When we were shaking in our boots because the South Texas Project outlook was so dim, Jack had confidence in the analysis the staff had done. He said, 'Stay in the boat and we'll get it to shore.'"

As a result of leadership by Spruce, members of the CPS Board of Trustees and City Council members, CPS continues to hold a 28 percent interest in the Project and looks forward to the day when the 2,500 megawatt nuclear plant will produce about a third of the city's electricity needs.

Some attribute Spruce's interest in facts

and details to his engineering background which includes a mechanical engineering degree from Texas A&M University. Others say it is just part of his style.

"He always takes copious notes," said Biggs. "It's a style he developed years ago to arm himself with information. By writing notes, he catalogued the information; it was a listening device."

Howerton remembers him as the man with good recall. "He has the ability to speak without any notes. He just carries around information in his head," said Howerton.

When not arming himself with information about CPS projects, Spruce has been an active member of the Greater San Antonio Chamber of Commerce and the San Antonio Rotary Club, having served on the Board of Directors to each. His peers in the Bexar County Chapter of

the Texas Society of Professional Engineers selected him as Engineer of the year in 1980. He also served on the Executive Board of the Electric Reliability Council of Texas. Spruce served as the 1984-85 President of the American Public Power Association, an organization which represents more than 1,750 publicly-owned utilities across the United States.

When Spruce puts aside his duties as General Manager, he will pursue his interests in hunting and boating. He also may begin a complete study of the best fishing places. Travel with his wife, Maurine, also may be on the retirement agenda when Spruce takes out his red bandanna handkerchief and waves it in farewell to close a successful 40-year career.



Gordon Hoyt, (left) General Manager of Anaheim, Calif. Municipal Electric System and 1985-86 American Public Power Association (APPA) president, presented General Manager Jack Spruce a plaque for his dedicated service from 1984-85 as APPA president.



# Working Alongside the Boss

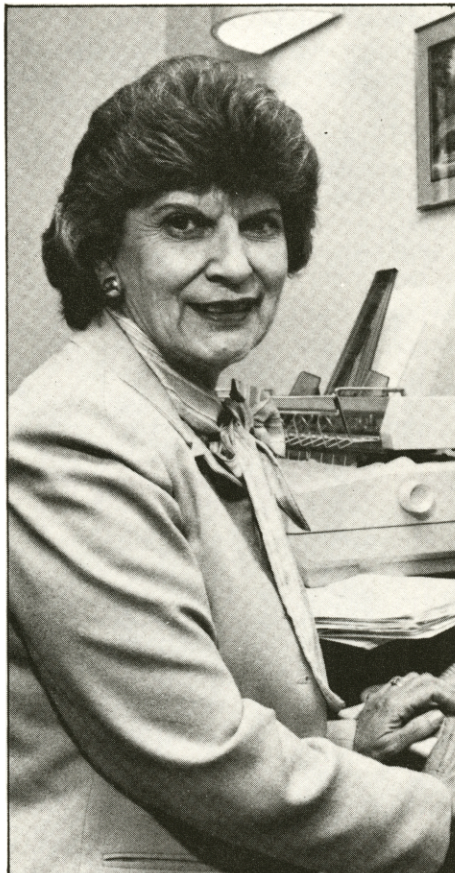
**Mary Helen Breen** has been Administrative Assistant to General Manager **Jack Spruce** for the past 11 years.

The discreet and gracious career woman has been part of the Executive Office for more than 30 years. Breen is in the unique position of having been associated with all of the General Managers who have served since municipal ownership began. They include **E.H. Kifer**, **N.B. Gussett**, **V.H. Braunig**, **O. W. Sommers**, **J.T. Deely** and Spruce. Even Col. **W.B. Tuttle**, first General Manager and Chairman of the CPS Board of Trustees, remained as a consultant during Breen's first years at CPS.

"They were all very special men with unique qualities. You might say each man was the right man for the time and certainly, the times at CPS have not always remained the same. Each man faced a new set of challenges and met them 'head on.'"

Coming on board five short years after municipal ownership began in 1942, the Administrative Assistant has seen CPS undergo phenomenal growth and change, not only in numbers but in fields in which CPS has been a leader — the computer conversion, the Gas and Electric Operations (GEO) Center, conversion to coal, transportation of coal by CPS-owned and maintained railroad cars and partnership in the South Texas Project.

"The list goes on and on," she says. "CPS no longer operates only a gas and electric company. The times have changed, and CPS has adapted."



**Mary Helen Breen**

Breen joined CPS in 1947 as a Steno Clerk in the Claims Division, handling claims correspondence, accident reports, **The Broadcaster** editorial assistance and photography.

Later the job of Secretary to **O.K. "Kelly" Jackson**, former Manager of the Personnel Department, opened up, and Breen was promoted. "Promotions came, but not without your having proved you were willing to work," she recalls.

The next five years were busy ones for the upbeat young woman. In addition to secretarial duties, she continued on **The Broadcaster** staff, writing, taking pictures, editing and generally helping Editor **Gene Flaig**, then Supervisor of the Employment Division.

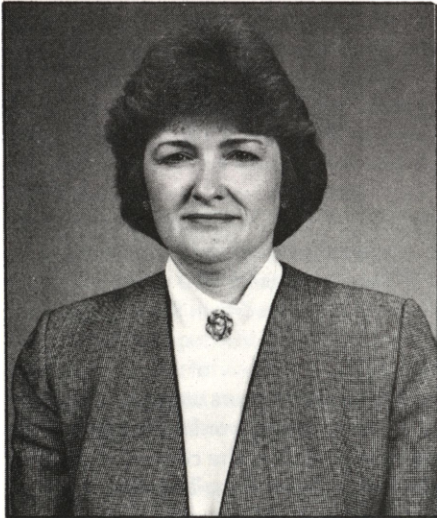
In 1955, **O.W. Sommers**, Executive Assistant, who would become General Manager within a few years, selected Breen as his Secretary. She stayed on as Executive Secretary to **J.T. Deely** when he was Assistant General Manager and General Manager. She currently is Administrative Assistant to Spruce and will work with new General Manager **Arthur von Rosenberg** as of January 1.

Of the present she says, "I love CPS and my job. My boss is a super-intelligent man who has kept me on my toes; and I appreciate the trust he has in me."

Mr. Spruce says of her, "Mary Helen is very loyal and dedicated and is a real asset to the General Manager's office. She excels at interface with the Board of Trustees. She understands front office priorities, and she exercises good judgment and tact in dealing with outside contacts." As a representative of Executive Women International, an organization in which CPS holds a charter membership (chartered in 1958 as Executives' Secretaries, Inc.), the career woman stays involved in community projects. Breen feels strongly "that you can hardly be involved with City Public Service for so many years without caring and being involved in other aspects of community service. We have a great company in a great city!"



# Axtell Joins Top Management Staff



**Jamie Axtell**

**Jamie Axtell** is the new Assistant General Manager for Planning and Development, Main Office. Axtell, former Manager of Generation and Environmental Planning, replaces **Arthur von Rosenberg**, who will become General Manager on Jan. 1. Axtell's responsibilities now include electric generation planning, power plant engineering, gas distribution engineering and system planning, fuels planning, environmental planning and scheduling of construction projects.

A CPS employee for 18 years, Axtell's background is in management information systems, purchasing and inventory control systems and in generation and environmental planning.

She holds a bachelor's degree in mathematics from Texas Tech University, where she was a member of Alpha Lambda Delta and Delta Phi Alpha

honor societies.

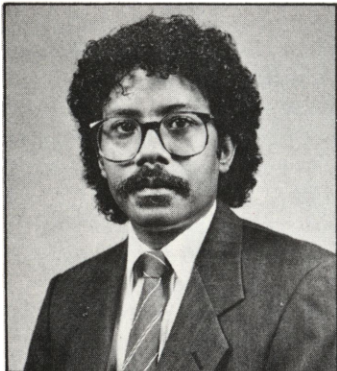
Her CPS development program has included computer hardware and software technology, programming and systems design, gas and electric systems and personnel management.

Axtell is a frequent speaker at local civic, professional and educational programs. She also has participated in numerous community activities, including the Leadership San Antonio program sponsored by the Greater San Antonio Chamber of Commerce. She is a member of the board of directors of Target 90/Goals for San Antonio.

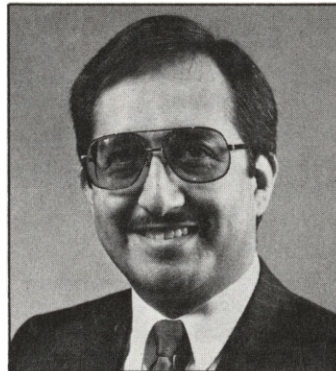
Other top management heads include von Rosenberg; **Ken Harz**, Assistant General Manager for Administration; **Howard Freeman**, Assistant General Manager for Finance and **Robert J. Costello**, Assistant General Manager for Operations.

---

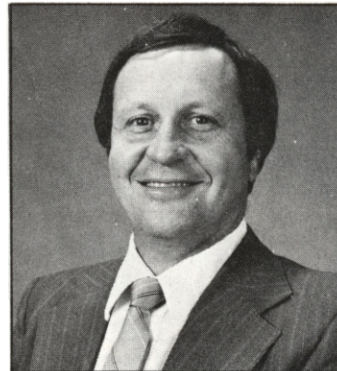
## CPS Management Appointees



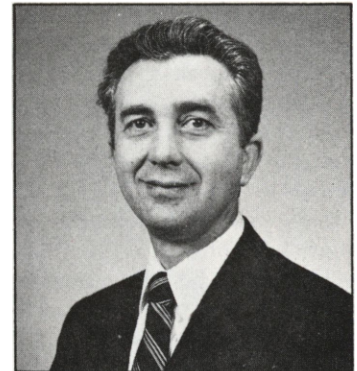
**Anthony Edwards**



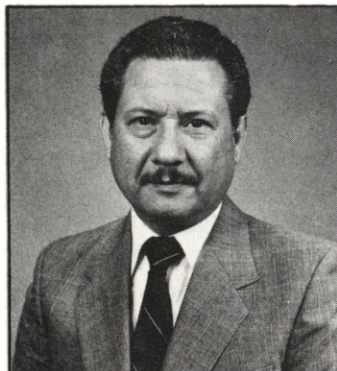
**Ralph Alonzo**



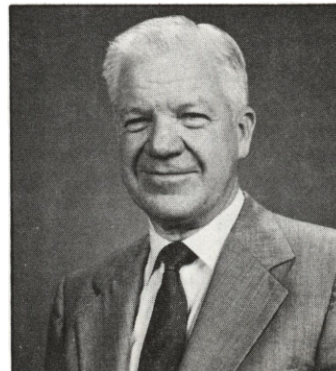
**Ken Fiedler**



**Martin Clausewitz**



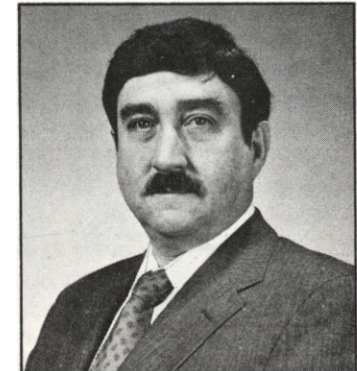
**Paul Garza**



**Jim Pettinos**



**John Mack**



**Bill Geissler**



Gearing up for 1988, six new department managers joined the CPS management team this fall. Three of the six managers head the newly-created Employee Relations, Field Administration and Power Plant Engineering Departments.

"The new appointments will increase productivity at CPS in 1988. Some of the changes were made to replace vacant manager positions. Also, three new departments were created to alleviate the work load of over-burdened departments," stated General Manager **Jack Spruce**.

**Anthony Edwards**, Manager of the newly-formed Employee Relations Department, Main Office, joined CPS in 1980. Edwards earned a sociology degree from Incarnate Word College and a master's degree in environmental management from the University of Texas at San Antonio. He also has started his doctoral work in sociology at the University of Texas at Austin. Edwards began his employment with CPS as a Rate Analyst. He was promoted to Equal Employment Opportunity (EEO) Analyst and later became Supervisor, then Director of that division of the Personnel Administration Department. As Manager of the Employee Relations Department, Edwards is responsible for EEO, organizational training, and the health and safety section. A San Antonio native, Edwards is currently teaching evening classes in sociology and government at St. Philip's College.

**Ralph Alonzo**, Manager of the Customer Services Department, Tower Life Building, is a San Antonio graduate of LaSalle High School. He earned a bachelor of science degree in civil engineering from Texas A&M University and began employment with CPS in 1974 as a Junior Engineer in the Construction Department. He progressed to Project Engineer and Civic Improvement Coordinator by 1978 and then to Superintendent of the Budget and Schedules Division two years later. He was named Superintendent of the Resource Management Division in 1982 and held that position until his recent promotion. Alonzo is active in various groups which promote the study of engineering and also is chairman of the Science Collaborative for Target 90.

**Ken Fiedler**, Manager of the Operations Department, Main Office, is a 22-year CPS employee. He graduated from

New Braunfels High School and went on to earn a bachelor of science degree in electrical engineering from Texas A&I University in Kingsville. He was employed by CPS in 1965 as an Engineer at the Braunig Power Plant. Fiedler earned promotions to Project Engineer, Senior Engineer and Superintendent of Electric Operations before his recent appointment to Operations Manager. Fiedler has served the community through the Bulverde Lions Club and the Bulverde Baptist Church. He and his wife, Lillian, have one daughter.

**Martin Clausewitz**, Manager of the Power Plant Engineering Department, Main Office, is a native San Antonian and has been employed by CPS for nearly 18 years. He attended Highlands High School and then Texas A&I University, where he earned a bachelor of science degree in engineering. He began employment with CPS in 1970 and in two years was promoted to Project Engineer in Power Plant Engineering. He then moved up to Senior Engineer before his appointment as Superintendent in the Fuels Department. He served CPS in that capacity for six years until his recent promotion to Manager of Power Plant Engineering. Clausewitz and his wife, Nancy, have two children.

**Paul Garza**, Manager of the newly-created Field Administration Department, Main Office, is a native of San Antonio and graduate of Fox Tech High School. He holds a bachelor's degree in business from Southwest Texas State University. His responsibilities as Field Services Manager include administrative support, contract compliance and other services provided by the gas and electric operations department. He also oversees electric service and meter installation, maintenance and accuracy. Garza, a former City Water Board employee, was hired by CPS in 1984. He and his wife, Socorro, have two children.

**Jim Pettinos**, Manager of the Construction Department, Main Office, filled the vacancy left by the retirement of Robert Mecke. Pettinos previously managed the Operations Department. Originally from Verona, New Jersey, he has spent most of his life in San Antonio. He graduated from Thomas Edison High School and then moved on to Southern Methodist University where he earned a bachelor of science degree in electrical engineering. Pettinos, who was employed

by CPS 39 years ago, began his career in the Electric Department and progressed through various engineering levels. His first job as Manager was in engineering. He then was appointed Manager of Operations, a position he held until his recent move to the Construction Department. Pettinos is a member and past treasurer of the Bexar County Chapter of the Texas Society of Professional Engineers. He has held various positions within the Institute of Electrical and Electronics Engineers (IEEE) and was honored by IEEE with the Centennial Medal for Extraordinary Achievement.

**John Mack**, Manager of the Production Department, Main Office, had been Manager of Production and Power Plant Engineering. With the recent reorganization of department structure, Mack assumed the duties of Production and Clausewitz took over the Power Plant Engineering responsibilities. Mack began his career with CPS in 1951 as a Junior Engineer. He earned promotions through the engineering ranks and in 1973 he advanced to the management level of Superintendent and held that job until his move up to Manager. Throughout his 37 years with CPS, he has been involved in operations, maintenance and testing of the utility's power plants. Mack stays active in the community through his membership in the Southside Chamber of Commerce.

**Bill Geissler**, Manager of the Generation and Environmental Planning Department, Main Office, is a San Antonio native who graduated from Central Catholic High School. He attended the University of Texas at Austin where he earned a bachelor of science degree in electrical engineering. Geissler was employed at CPS in 1967 as a Junior Engineer at the Braunig Power Plant and worked in various engineering areas before being promoted to Energy Control Superintendent in the Operations Department. He held that position for eight years until his recent promotion to Manager of Generation and Environmental Planning. Geissler is past chairman of the Operating Committee for the Energy Reliability Council of Texas and also serves on the Central Performance Committee for the North American Electric Reliability Council. He is a member of the Texas Society of Professional Engineers and the Institute of Electrical and Electronics Engineers. He and his wife, Tonia, have two children.



# Cecil Henne Concludes 39-Year Career

**Cecil Henne**, Manager of Customer Services, retired Oct. 31, after ten years of contact with customers from all walks of life plus 29 years as an engineer.

Henne is particularly proud of CPS' commitment to the public. "The Customer Services Department is giving its customers superior service. This has been possible through the automation of customer records, heavy emphasis on conservation and the addition of personnel," Henne stated.

First, as Superintendent of New Business in 1977 and then, as Manager of Customer Services since 1980, Henne has learned that he must work with both his head and his heart.

"While we must disconnect customers when they don't pay their bill, we also try to help customers who notify us of their problems or are hardship cases," he said. "CPS wants to keep its customers on. We help whenever we can."

In an average month, there are more than 19,000 payment extensions, 3,000 cutoffs and 2,700 reconnections of utility service.

The University of Texas graduate in electrical engineering can also attest to the engineering caliber of CPS, having worked as an engineer for 29 years before moving to the Customer Services Department. Henne was hired as a student engineer at the Mission Road Plant and rose to Chief Electrical Engineer in the Power Production Department and Chief Engineer in Distribution Facilities Design in the Engineering Department.

Looking back, Henne recalls, "When I came to work January 31, 1949, it was the coldest day on record — four-tenths of a degree below zero. I was sent to work defrosting valves at the Mission Road Plant with a pear burner!

"In San Antonio we had two power plants — Station A and Mission Road. The Comal Plant in New Braunfels also supplied power for San Antonio. Station A provided DC generation. We were still providing direct current to some downtown businesses. CPS was constructing a 30 megawatt unit at Leon Creek."

Henne tells of the early 1950s and the Tuttle Plant. "The plant had a beautiful setting, very primitive, with no housing or businesses for miles around. We used



**Mayor Henry Cisneros (left) presents retired Manager of Customer Services with a citation from the San Antonio City Council for Henne's 39 years of service to the community.**

to go bird hunting close by."

During his engineering days, Henne was "in on the ground floor" during a lot of system improvements. Among them, he helped set the standards for automated burner control at the power plants. Many of the innovations developed at CPS were adopted as industry standards.

He worked with others including **Warren Schattenberg**, Superintendent of the Mechanical Division, Main Office, on the electrical design of Sommers Plant, and on the first diesel backup units at that plant. Later he worked on distribution transmission, substations and right-of-way lines to the South Texas Project — among others.

Henne assisted in designing the first 345-KV substation (Skyline) and worked on the first standard plastic gas pipe installation at CPS. He was a prime mover instituting 35-KV for distribution (up from 13-KV) with standard pad-mount transformers and underground circuits in backlot easements.

"It made more sense from an economic and efficiency point of view," he says, "than having a submersible vault in the front yard with all of its accompanying coordination problems."

From the post World War II boom days

to the energy conscious '80s, Henne has seen and participated in a large slice of the utility's colorful history. He has known five General Managers, from **Bernard Gussett** to **Jack Spruce** — each with "a management style of his own."

Describing Gussett, who Henne and his wife first met at a company picnic in 1949, Henne says, "He was a fine man, unassuming and very friendly." He characterizes **Vic Braunig** (who hired Henne) as "vibrant, outspoken and fair — not bad, for an Aggie."

**O.W. Sommers**, on the other hand, was "reserved — capable — a man with keen insight." Of **Tom Deely**, Henne says, "He was a fine administrator and a close friend." And Jack Spruce, Henne sees as "wise, growth conscious, employee oriented...best described as 'one of the good guys.'"

Looking back on his career, Henne affirmed, "I would not trade a day — maybe change a few a little — but not trade one! This company has been a great company to work for. I predict the coming years will be excellent years for CPS and its employees."



# CPS Responds to Storms



Linemen correct one of 67 electric circuits affected by the unexpected rainstorm.

More than 300 CPS employees including, utility workers, pole crews and Gas and Electric Operations (GEO) System Operators worked up to 16 hours at a stretch to restore electric service to thousands of CPS customers during a series of rainstorms which began on Labor Day.

In addition, Telephone Contact Representatives forwarded more than 13,000 trouble orders to the Trouble Dispatchers based at Jones Avenue between 6:30 p.m. Sept. 7. and 7:30 a.m. Sept. 9.

Strong winds and heavy rains from the unexpected storm caused extensive damage to CPS electric facilities, resulting in the largest number of outages in the 17-year history of GEO. Fifteen percent of all customers lost power for varying lengths of time. Initially, 67 electric circuits, affecting 75,000 homes, were lost, but CPS crews were able to get most circuits back in by the following morning.

CPS crew members worked three days correcting downed utility poles and power lines, trees and limbs in CPS power lines, services and meters pulled off homes and numerous blown transformers which affected individual electric services.

At the September Board meeting, the CPS Trustees passed a resolution com-

mending employees for dedicated work in restoring electric service. The resolution concluded: "...Be it resolved that the City Public Service Board of Trustees convey their sincerest appreciation to all CPS employees who responded so admirably with long hours of dedicated work to restore electric service to customers in a timely and safe fashion, as the electric system faced its sternest test of adverse weather conditions in over a quarter-century, and be it further resolved that CPS employees be apprised of this resolution and that it be entered into the minutes of this meeting."

In addition to re-establishing power throughout the city, 27 CPS employees reinstalled service and electrical equipment at the papal mass site on Potranco Road following the collapse of the twin towers which were to serve as a backdrop for the altar. Strong winds of the storm on Sept. 10 brought down electrical equipment and also caused an outage at the site three days before Pope John Paul II was to celebrate mass. Temporary electric service and equipment had been ready at the mass site since August.

Working through the night and the next day, CPS crews restored service in time for the 8 a.m. Saturday rehearsals, the day prior to the papal mass.

## CPS Emergency Crew For Papal Mass Site

### Line Foreman

Dennis Haby

### Linemen

Fred Biesenbach

Bob Bowen

Kimball Moos

Elroy Preiss

### Linemen Trainees

Robert Anguiano

Gilbert Benavente

Doyle Lauderdale

Jose Rodriguez

### General Foreman

George Wilke

### Right-of-Way Agent

John Baccus

### Buttmen

Jesse Casillas

Jose Sanchez

### Pole Boom Operators

Santiago Alvarado

Victor Griego

### Utility Workers

Michael Espinoza

Carlos Menchaca

### Equipment Operator

D.C. Slomchinski

### Electric Meter Foreman

Gerald McNett

### Meter and Service Supervisor

Ray Williamson

### Metershop Supervisor

John Bordovsky

### Pole Crew Foreman

Malcolm Stein

### Special Truck Drivers

Ignacio Borroel

Leonard Regalado

### Warehouseman

Jarold Hosey

### Serviceman

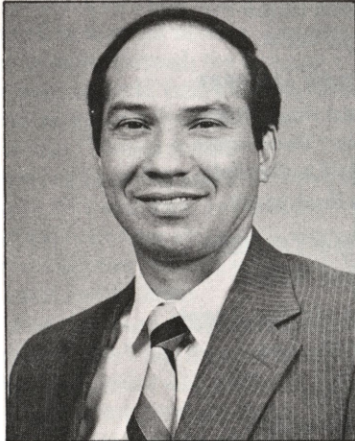
Frank Hunter

### Engineer

Wayne Fix



# CPS Aids United Way



**Joe Trevino**  
CPS United Way Chairman

---

*"I'd like to thank United Way committee members who worked very diligently. The campaign was well organized and went very smoothly."*

---

Lindsey's family didn't move to San Antonio for the climate, better job opportunities or the Riverwalk. They came to save Lindsey's life. Adequate care for Lindsey, who has cerebral palsy, was not available in their Oklahoma town. Programs at the South Texas Children's Habilitation Center offered them hope that Lindsey could grow, thrive and achieve her maximum potential. Thanks to United Way and the South Texas Children's Habilitation Center, Lindsey has progressed rapidly and is now enrolled in the public school system.

Lindsey is only one of 876,000 Bexar County residents who benefitted last year from United Way through 80 local agencies and 200 health and human care programs. United Way funds health-related services, such as research, treatment of cancer, arthritis, and Alzheimer's disease and counseling and therapy for alcoholism, drug and child abuse. Human care and social services include after-school care, day care, nutrition and transportation for the elderly, rehabilitation for the disabled, food for the needy and shelter for the homeless, as well as recreational activities such as boy scouting, swimming lessons, sports and youth clubs.

These services are funded by local donations. The 1987 United Way Campaign Goal is \$18.2 million.

Some 3,542, CPS active and retired employees contributed \$297,772.87 to the city-wide campaign, totaling 99.3 percent of the CPS 1987 campaign goal. The United Way gift was an increase of 6.4 percent over last year's contribution of \$279,787.94.

"We had a good response from employees, indicated by the number of Fair Share donations and the per capita of contributions, which saw an increase over last year from \$79 to \$84," stated **Joe Trevino**, Manager of Transmission and Distribution Engineering and United Way Campaign Chairman.

"I'd like to thank United Way committee members who worked very diligently. The campaign was well organized and went very smoothly" Trevino said.

In addition to Trevino, CPS United Way committee members included **Lorali Price**, Campaign Coordinator and Construction Coordinator, Mission Road Construction Center; **Anthony Edwards**, Manager of Employee Relations, Main Office; **Wayne Fix**, Superintendent of the Transmission Division, Jones Avenue; **Diana Holson**, Laboratory Assistant and **James G. Peeler**, Maintenance Supervisor, Power Plants; **Jack Shelton**, General Foreman, service centers; **Raymond Klug**, Line Foreman, and President of IBEW Local 500; **John Leal**, Manager of Personnel Administration, Main Office and **Lillie Williams**, CPS Loaned Executive and Systems Analyst, Main Office.

The CPS campaign began on Sept. 17 and concluded in November. Ninety-one solicitors, representing 18 departments collected employee pledge cards. One thousand six hundred seventy employees contributed their Fair Share, consisting of one hour's pay per month over a 12-month period.

"Two hundred employees toured United Way agencies and witnessed firsthand how their donations are used to serve the community," stated Price.

"This always helps raise consciousness."

The 1987 United Way Campaign marked the 100th year of the fund drive. The first known charity drive dates back to the efforts of four clergymen in Denver, Colorado, who used their drive to fund several local agencies.

Locally, United Way began in 1939 when San Antonio business leaders, through the Chamber of Commerce, organized a charity fund called the Community Chest.

The proceeds went to local social service entities. When World War II began, the charity fund drive was named War Chest Drive with contributions going to national defense and local agencies.

With the expansion of the Alamo City, human needs have increased and so has United Way. In 1973, the name of the organization was changed from United Fund to United Way. The new name emphasizes not only fund raising but also community needs.



# to Reach Centennial



**United Way**



*Photos Courtesy of United Way*

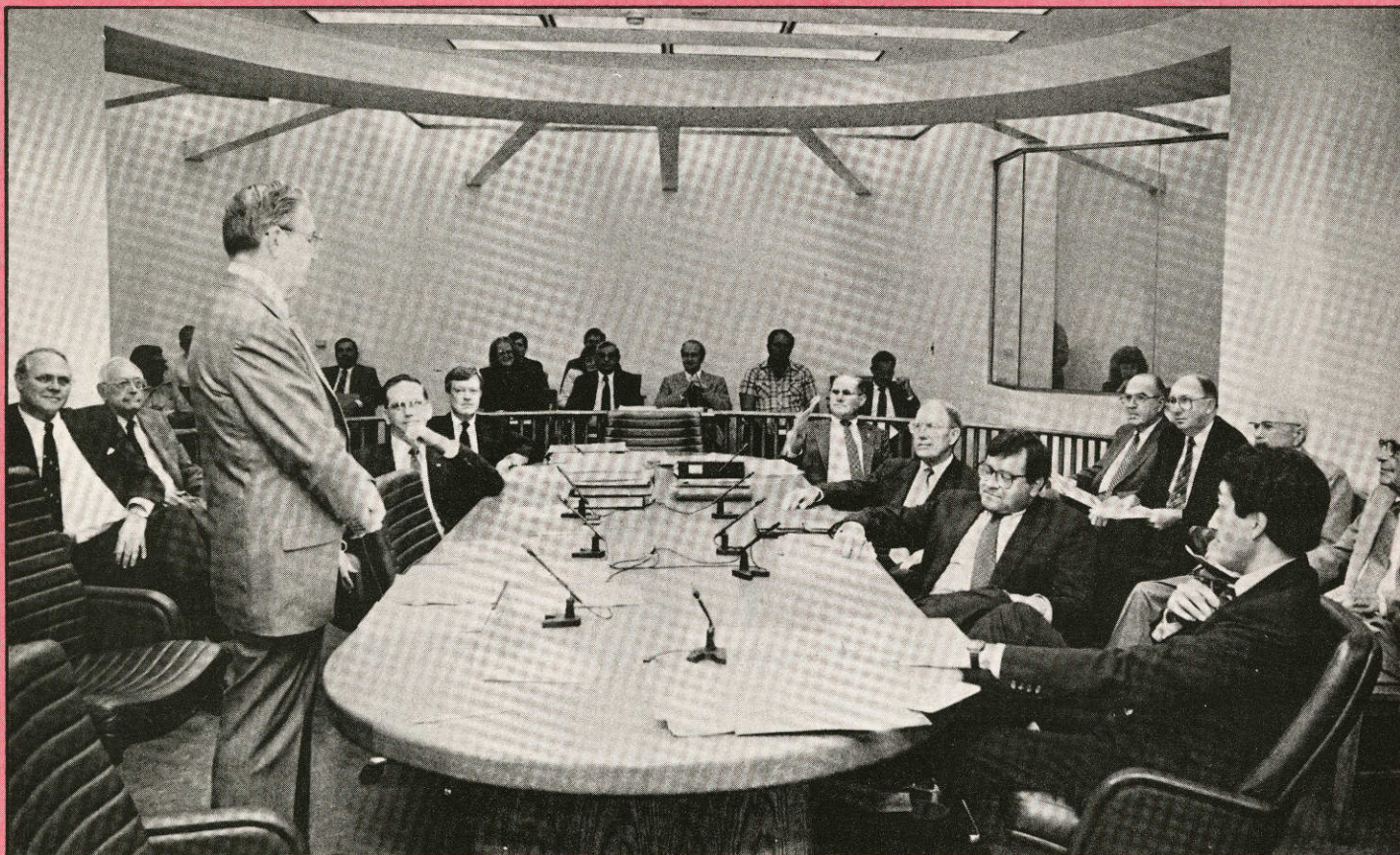
***CARING PLUS SHARING  
THE CPS WAY***



1942

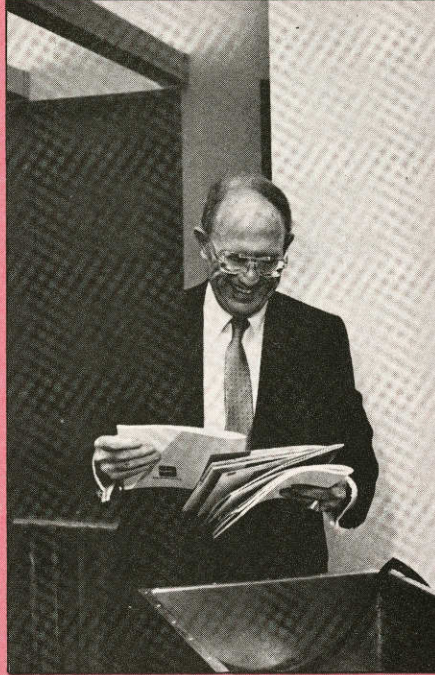
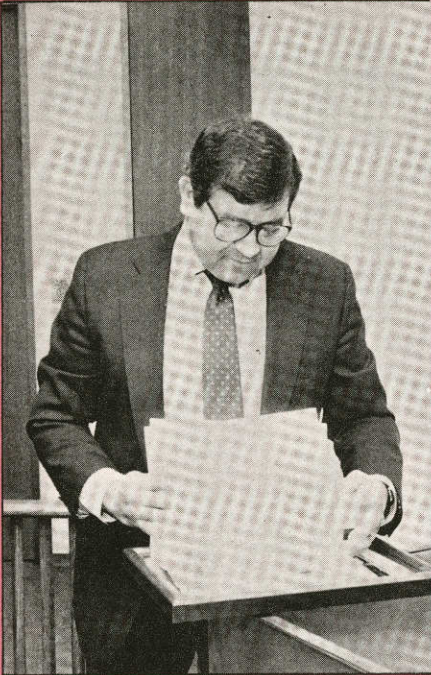
1987

# Celebrating 45 Years of Municipal Ownership



At the October Board Meeting, General Manager Jack Spruce (standing) introduced the special guests who contributed to making CPS a successful enterprise. Sitting around the table (clockwise) were Howard Freeman, Assistant General Manager for Finance; John Wood, Legal Counsel; Arthur von Rosenberg, Associate General Manager; CPS Trustees Pat Legan, Ruben Escobedo and Mayor Henry Cisneros. Honorees included (second row left to right) Glenn Biggs, former CPS Board Chairman; Wilbur Matthews, CPS legal counsel of law firm Matthews and Branscomb; Gen. John Bennett, past Board Chairman; Jarvis Spreng, Individual Trustee of Harris Trust and Savings Bank of Chicago; John Locke, former Board Chairman and O.W. Sommers, former General Manager. Also present, but not pictured was Board Chairman Earl C. Hill.





---

**LEFT: CPS Trustee Ruben Escobedo studied photographs of San Antonio, statistical information on City payments and a customer list on microfiche before putting them in the time capsule. RIGHT: Trustee Pat Legan added the 1986-87 Annual Report, the 25-Year Book and the 45th anniversary issue of The Broadcaster to other CPS mementos in the time capsule.**

---



**Mayor Henry Cisneros (left) presented CPS Board Chairman Earl Hill (center) with the resolution which proclaimed the week of Oct. 24-30 as Public Power Week, as General Manager Jack Spruce looks on.**

Municipal ownership of CPS by the City of San Antonio has been favorable over the last 45 years. CPS has been able to provide reliable electric and gas service at low rates. In addition, payments and services to the City of San Antonio of over \$1 billion since 1942 have helped the City expand services, as well as reduce the tax rate.

The purchase of CPS took place on Oct. 24, 1942. To commemorate the 45 year anniversary milestone, Mayor Henry Cisneros proclaimed Oct. 24-30 as Public Power Week. In addition, CPS Trustees at their October meeting honored Gen. **John Bennett, John Locke, Glenn Biggs and Eloy Centeno**, past Board Chairmen; and **O.W. Sommers**, past General Manager, for their contributions to CPS. Also recognized were Wilbur Matthews, CPS legal counsel of Matthews and Branscomb and Jarvis Spreng, CPS Old Series Bonds individual trustee of Harris Trust and Savings Bank of Chicago.

The Trustees also placed 1987 mementos of CPS and San Antonio in a time capsule. These included photographs, newspaper clippings, statistics on payments to the City of San Antonio, a letter from General Manager **Jack Spruce** and other CPS memorabilia. The time capsule will be opened by CPS employees in the year 2032.



# 545 Recognized For Safe Work Records

Safety is a high priority for CPS employees, most of whom work with gas and electricity. The 371 individual safety awards at the recent 37th Annual Safety Awards Program is evidence of the strong commitment CPS has to safety on the job. The awards marked service through 1986 without a disabling injury resulting in lost work time, including 8 employees with 35 years of safe service.

In addition, 174 foremen and supervisors were honored for completing one or more years without a disabling injury to themselves or members of their crews.

Furthermore, **Michael Paxton**, Leak Crew Foreman, Mission Road Construction Center, received the Helping Hand Award for administering first aid to nine teenagers involved in an auto accident near Port Aransas in August.

The certificate for aiding the public in an emergency situation read:

*"On a dark, isolated stretch of highway between Corpus Christi and Port Aransas, Michael Paxton and his brother-in-law came upon a car accident which had happened just before their arrival. The victims, mostly teenagers, were thrown from their vehicle on impact. Many were in the bushes beside the road, making their rescue difficult because of the darkness. Michael pulled one girl, who had suffered a broken neck, from a rain-filled bar ditch where she would have drowned. Using the First Aid training he had received at City Public Service and working with his brother-in-law, Michael rescued nine victims then helped put them on stretchers when the local emergency service arrived. His selfless actions were responsible for saving lives and his assistance earned him the gratitude of the Port Aransas Rescue Service."*



**Michael Paxton, Leak Crew Foreman, (left) accepts the General Manager's Helping Hand Award from Gene Krause, Superintendent of Gas Operations, for administering first aid to nine teenagers involved in a car accident.**

The following employees were recognized at the safety awards presentations:

## Individual Safety Awards:

**INDIVIDUAL AWARDS (35 Years):** Milton Noack, Northwest Service Center; Lucas D. Rodriguez (Ret.) Southwest Service Center; Juan C. Sanchez, Eastside Service Center; Hubert W. Douglas, Meter Reading; Bruce W. Carlisle, Milton L. Sengelmann and Thurman E. Whitely, Tower Life.

**INDIVIDUAL AWARDS (30 Years):** Juan Nieto, Billy Pool, Jesus M. Tello and Collins F. Tow, Mission Road Construction Center; Edward E. Bednarz, Everest A. Ledwick, and Juan Ramos, Salado Street Center; William Barron, Theodore Bukowski, Howard Fox, Carroll Rohan and Emil Zitzman, Jones Avenue; Carl McGhee and Mauro Rodriguez, Eastside Service Center; James A. Colbath, Southwest Service Center; Ray Blum and Albert J. Michna, Northwest Service Center; Jose C. Hernandez and John L. Roberts, W.B. Tuttle Power Plant; Daniel McFall and Severien Persyn, Sommers/Deely Power Plant.

**INDIVIDUAL AWARDS (25 Years):** Francisco Blancas, Juan Casias, Raul Gonzales, Elton D. Luensmann, Jesus Patlan, Robert J. Sells, Freddie Spears and Mercedes Valdez (Ret.), Mission Road Construction Center; Lewis Herber, Glenn Kosub, Paul J. Marbach and Ervin Pruski, Eastside Service Center; Robert W. Brandt, Theodore S. Claus, Charles W. Fling, David O. Pearson and Jean A. Smith, Sommers/Deely Plants; Donald Kappelman, David Monaco, James Scaramozi, Albert Schulze and Roland Trees, Jones Avenue; Ernest E. Jonas, Salado Street; Apolinar M. Covarrubias, Southwest Service Center; David A. Durham, Milton Klabunde, Santos Ortiz, and Jack L. Walker, Northwest Service Center; Edward J. Brought and Fred Krupalla, Tower Life; Albert R. Ibanez, Main Office; Candelario A. Ortiz, W.B. Tuttle Power Plant.

**INDIVIDUAL AWARDS (20 Years):** Arturo Hinojosa, Raymond Isley, Vincent M. Jungman, Joseph Krisak, Luis Mares, Jose I. Marfil, Frank Y. Martinez, Gilbert Pawelek, Andrew Ruffo,

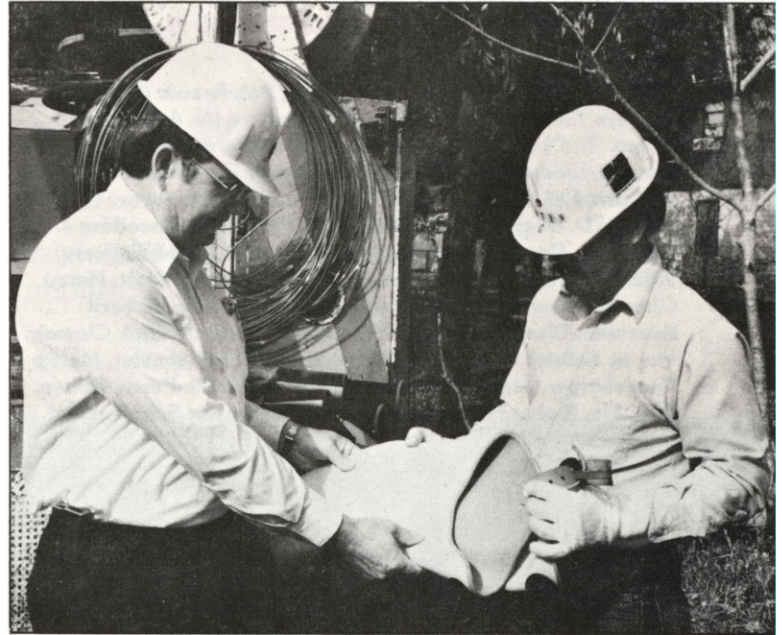


Arthur Schwarz and John N. Sommerville, Mission Road Construction Center; Pedro Contreras, Jesus Martinez, Robert Piegza and Claudio Prouty, Eastside Service Center; J.A. Jones and Harvey Sassman, Southwest Service Center; Joseph J. Backos, Clarence Gilcrease, Jimmie Knight, Ernest N. Kowalik, Hector Lares and Alvin Scheffler, Jones Avenue; Melford O. Friesenhahn, Salado Street; Pablo Lopez and Charles A. Muenchow, Northwest Service Center; Alejandro D. Ortega, W.B. Tuttle Power Plant; Rudy G. Garcia, Jessie A. Simpson, Bertrand A. Stark, David O. Pearson and Robert W. Brandt, Sommers/Deely Plant; Eligio G. Castro and Charles A. Wilson, Braunig Plant.

**INDIVIDUAL AWARDS (15 Years):** Marcial B. Diaz, Dennis Herrmann, Armando Jasso, Roy E. Lara, Michael Mahurin and Ernesto Valdez, Mission Road Construction Center; Rafael R. Gonzalez and Johnny Quinonez, Southwest Service Center; Monico Barba, Daniel Contreras, Raul Fernandez and Larry Kunz, Jones Avenue; Vernon T. Cowey, Richard Dieckow, William R. Gulick and Steve M. Nino, Salado Street; Felix R. Castro, Emilio Ortiz and Gilberto Rivera, Northwest Service Center; Robert D. Felan, Leon J. Gerlich, Felipe H. Martinez, Arturo Meza, David F. Shodrock and Alfredo Villarreal, Eastside Service Center; Billy J. Black, Jose G. Farias, Wayne D. Ferrill, Thomas W. Kiolbassa, Ted E. Kopecki, Elias Lopez, Van H. McNeil, Thomas P. Neal, Alejandro Ortega, Otis O. Pierce, George Reininger, Everett J. Schliesing, Robert Thurston, John C. Witteman and Gary D. Wood, Sommers/Deely Power Plants; Sherman Harless and Arthur R. Hilburn, Leon Creek Plant; Antonio Barrera, Guillermo Mata and Jack H. Wideman, Main Office; Ralph E. Chapman, Lawrence Widelski and Clarence Ciomperlik, Braunig Plant.

**INDIVIDUAL AWARDS (10 Years):** Gerard Lohrke, Casimiro Lopez and Jesse C. Ramos, Northwest Service Center; Ernesto G. Alonzo, William Keller and Alvin Kuntscher, Eastside Service Center; Antonio Alvarado, Franklin J. Alvarez, Manuel Alvarez, Meliton Estrada, Alfonso O. Herrera, Carlos Medina, Leroy Mendoza, Jose Salazar, Malcom Stein and Charles E. Stough, Southwest Service Center; Manuel A. Amador, Antonio C. Ayala, Edward P. Carlucci, Charles Cervenka, Gary Conway, James George, Bene Medina, Rogelio P. Moreno, Andrew Richter, Roy V. Rodriguez, Robert J. Sapp and Carl Schick, Jones Avenue; Guadalupe Alvarado, Pablo J. Amador, Ector Gamez, Toribio Gutierrez, William Heap, Victor Jimenez, Francisco Lopez and Cruz Macias, Mission Road Construction Center; Alejandro Arguello, Salado Street; Edward M. Alonzo, Amasa L. Clark, James R. Demoin, Richard N. Dingel, John E. Dukes, Clinton M. Gibbons, Ronald W. Kroll, Anthony L. Padalecki, Richard G. Perez, Thomas Trinidad, Arnold M. Vera and Donald G. Wesch, Sommers/Deely Plants; Alfred R. Trevino and Mario A. Trevino, Meter Reading; Alta Anderson, Joe R. Martinez and James N. Raven, Tower Life; Manuel V. De La Garza, Alice C. Earl and Rodolfo Espinoza, Main Office; Gentry C. Cooley, William S. Day and Hugh D. Robinson, W.B. Tuttle Plant; Arnold J. Lyro and Jerome Reininger, Leon Creek Plant; Alberto Gonzales and Gary Zigmund, Braunig Plant.

**INDIVIDUAL AWARDS (5 Years):** Louis A. Arce, Rosendo Balderas, David Cervantes, Gregory Effinger, Gary W. Fletcher, Benito G. Gomez, Erasmo Gonzales, Francisco Gonzales, Billy Hohensee, James D. Hubbard, Roger Jubela, Mark Leineweber, Marvin Lowden, Jesse Martinez, Luis C. Martinez, Charles Mitchell, Robert S. Rother, Ricardo Simental, Robert F. Susman, Jose H. Unate, Pedro M. Villanueva and Donald W. Wehe, Northwest Service Center; Marshall Ahr, Manuel R. Fuentes, Robert Henderson, Donald Hines, Tim Moore, Eddie Ojeda, Frank L. Prince, Manuel R. Rames and David Sumner, Eastside Service Center; Cecil W. Carlisle, Arturo V. Gonzales, Charles



Kenneth Gayle, newly-appointed Safety Coordinator, and Lineman Martin Gutierrez ascertain that the rubber gloves are hole-free. Punctured or cracked gloves are discarded.

Jenschke, Raymond Klug, Cristobel Lopez, George Ortega, Leo Padalecki, Patrick Pollok, Samuel Ponce, Richard D. Rodriguez and Michael Williams, Southwest Service Center; Anthony E. Bretzke, Albert Felix, Miguel M. Flores (Ret.), Solomon Franklin, Eduardo Gonzales, Jose P. Hidalgo, William Lee, Ricky B. Maron, Amando R. Martinez, Robert L. McCartney, Anthony Montoya, Oscar C. Moore, Louis Munoz, Donald Murray, James Skyrn, Arturo B. Sandoval and Johnnie W. Tudyk, Jones Avenue; Edward Alonzo, Dana W. Cashion, John Chessher, Marcos Contreras, Leonard Cruz, Richard A. Dean, Edward Gonzales, Dennis Hampton, Mark Henke, Joe Herrera, Jesus R. Ibarra, Kenneth Jenkins, Lee Johnson, Antonio Lucio, Daniel Martinez, Pedro M. Martinez, Kenneth Mihalski, Francisco Negrete, Richard Steed, Sacramento Uriegas, Roger Valdez and Pedro Zuazua, Mission Road Construction Center; Antonio L. Acuna, Guadalupe Anguiano, Larry C. Basinger, Jesus G. Caballero, Yolanda Curry, Sergio De La Fuente and Fernando A. Serra, Salado Street; Eufemio R. De Leon, Chester Kopecki, Emeric A. Kotara, Reynaldo Longoria, Ildefonso Lopez, George A. Mott, Lawrence W. Rahn, Marvin E. Rohde, Steve V. Vega and Austin B. Wondzell, Meter Reading; Tracy K. Bowers, Roderick Crandle, Kenneth E. Ellis, and Christopher A. Lansford, Tower Life Building; Josephine Aleman, Maria G. Garcia and Jose M. Mendez, Main Office; Donald Ciomperlik, Bryan K. Fahrig, Alonzo R. Gonzalez, Felix R. Guajardo, Clinton C. Jenschke, Samuel R. Mathis, Rodolfo M. Salazar, Robert H. Sawyer, Mark E. Vallier, Stanley Whiting and Pat Woods, W.B. Tuttle Plant; Froilan Aguirre, William Ahumada, Michael Chiappini, Evelyn J. Davis, Frank A. Dunn, Alonzo Gonzalez, Richard D. Gottardy, William M. Gowanlock, Hsiu Lee, John C. Lee, Robert V. Leija, Michael A. Montoya, Edward W. Niestroy, Jimmy R. Norment, John W. Patterson, Gilbert G. Perez, Kenneth R. Petri, Alvin Petty, Matthew L. Santoscocoy, Emerson E. Smith, Delbert L. Stavinoha, Aubrey G. Taft and Elouise Taylor, Sommers/Deely Plant; Opal C. Jackson, Eddie Rosales, Juan R. Segovia, Cordull L. Turner and David A. Weed, Leon Creek Plant; Mateo Camargo, Richard Gonzales and Gustavo Morales, Braunig Plant.

*continued on next page*



## Letters of Commendation

**JONES AVENUE:** Robert P. Blair (13); Bob Brandt (9); Jerry Beavers, Gerald Clayworth and Will Howard (8); August D. Piegza (7); Chester L. Opiela (6); Norman Burriss, Bobby G. Land, Larry D. Lindner and William A. McDougale (5); John Bordovsky III, Carroll W. Rohan, Carl E. Schick and Olen A. Surber (4); Richard D. Baggs, Joe H. Balzen, Les Barrow III, Theodore J. Bukowski, Oscar Del Toro, Lloyd V. Doodall, Frank E. Ferry, William H. Hasenbeck, Aubrey J. Herry, Gerry McNett, Harry Ohnesorge and Robert Sackett (3); Tom Anthony, Richard Baumann, Charles H. Carruth, Floyd D. Carter, Derick Cloman, Wayne Kaliisky, Marlin G. Lindsey, Leroy E. Schulmeier, Marlin Tanneberger, James Tullis and George Wilke (2); Penny Brown, R.W. Fix, Richard Johnson, Leonard Orth, Alvin Scheffler and Emil Zitzman (1).

**MISSION ROAD CONSTRUCTION CENTER:** William Goesch (Ret.); Leroy Boenig, Harry J. Fraser, Jr., Joe L. Jarzombek, Jim Meuth, Frank Nicholson and Arthur D. Schwarz (5); Juan Casias, Gilbert Cassiano, Lee Salzman, Rolly Tolleson and James Wetta (4); Sidney Moczygemba (3); Eugene Brietzke, Paul C. Calandres, James F. Koeb, Travis E. Metheny, Michael Smith and Stephen Watts (2); Acie C. Carr, Douglas Bowker, Mike Mahurin, Charles Miculka, John Minister, Leon Salzman, John Simon, Gerald Simpson, Howard Strahan, Collins F. Tow and Henry Woods (1).

**BRAUNIG POWER PLANT:** Louis Sengele (21); Wes Dorsett (14); Donald Janert and Gordon Rainwater (5); Andrew Alberthal, Larry Bienek, Roger Klaerner, Jerome Reininger and Winston Southern (4); Charles Henry (2); Arthur Lay, Larry Johnson, Lonnie Reisdorph, Roy Schneider, Tommy Truehardt and Douglas Wilde (1).

**SOMMERS/DEELY POWER PLANT:** James Dowlearn (13); Aubrey Taft (6); Joe Blackburn and Daniel McFall (5), Carl Dietrich, Severien Persyn and Jean Smith (4); Jody Boatright, Robert Mace, Jessie Simpson and George Soechting (3); James Hammons, Sigmond Pollok and William Wahl, Billy Black, Amasa Clark, Ronnie L. Garcia, Claude Howard and Thorne Robalin (1).

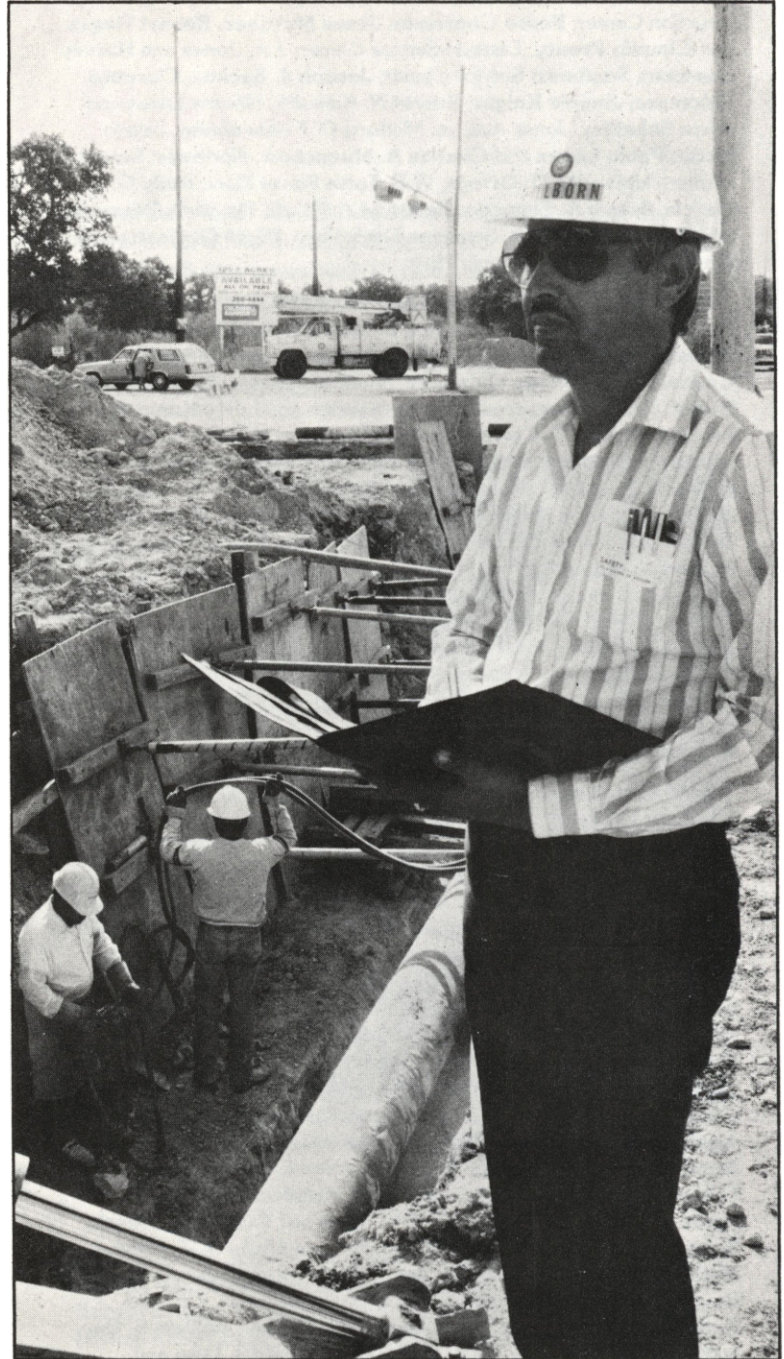
**TUTTLE PLANT:** Lloyd Alford (8), Donald Leigh and John Roberts (4); Kenneth Bauer (3); Richard Griffin (2).

**EASTSIDE SERVICE CENTER:** Rodolfo Serna (7); Kurt C. Mengden (5); Marvin J. Jarzombek (4); Allen A. Jung, William Keller and Kenneth C. Mills (3); Donald L. Bernard and Virgil Wiatrek (2); Joe R. Barnes, Paul A. Bronder, Donald Hines, Harvey Lindsey, Ervin Pruski and Kenneth L. Strey (1).

**NORTHWEST SERVICE CENTER:** Ray Blum, Gerald T. Day, Helmuth Dietert, Doyle E. Haese, Marvin McDonald and Charles A. Muenchow (3); Donald Eickenroht, Milton W. Klabunde and Donald E. Owens (2); Mark J. Blythe, Charles Bradshaw, John Briggs, Edward F. Budnik, Jose V. Cortinas, David A. Durham, Gerard B. Schneider and Benny Springer (1).

**SOUTHWEST SERVICE CENTER:** Roy Wahl (Ret.); Guy A. Holzhaus (6); Marlin R. Stein (5); Larry R. Burell, Roger Seguin and Floyd Winn (4); John Bippert, Dennis Haby, Charles Jenschke and Victor P. Mazac (3); Leroy Mendoza and Samuel A. Moreno, Jr. (2); Richard Alegria, William E. Fry, Norman Jordon, Kenneth Kiesel, Burney Mangum, Raymond Moczygemba, Malcom Stein and William M. Stiewig (1).

**SALADO STREET:** John G. Newman (4); Keith E. Coble (3); Jesse J. Felux, Ernest E. Jonas, Vernon Rietz and Lawrence W. Voigt (2); Kenneth H. Conner and Gary Marburger (1).



Ruben Wilborn, Safety Supervisor, inspects work procedures of a CPS gas main crew.



# 5th Annual Photo Competition

The **Broadcaster** staff invites active and retired employees to enter the fifth annual "Combine Pride with Service" photo competition.

## Categories

People...Animals...Scenic...Creative

## General Rules

1. Open to all CPS employees, active and retired.
2. Photographs must have been taken since January 1, 1987.
3. Participants may enter one photograph in each of the four categories.
4. Only one monetary award will be given to any entrant.
5. All entries must be prints (black and white or color) no larger than 8 x 10. Framed, matted or mounted photographs will not be accepted.
6. Entries to be returned by mail must have a self-addressed stamped envelope. Or, they may be picked up after the competition at **The Broadcaster** office, River Level, Main Office. If the entrant desires, photos will be returned through inter-office mail.

## Identification

On each entry, tape a sheet of paper with the following information: **NAME... ADDRESS...CPS WORK LOCATION... CATEGORY...TITLE OF ENTRY.** Please do not write on the back of the picture. Any entries received without all the above information will be disqualified.

## Where to Send Your Pictures

Entries can be mailed, hand-delivered or sent through inter-office mail to:

**The Broadcaster**  
River Level, Main Office  
P. O. Box 1771  
San Antonio, Texas 78296



Elisa Gonzales, Mail Clerk, takes a close-up of a rose.

## Judging

Independent judges will select the winners, and the judges' decisions are final.

## Prizes

First-place winners in each category will receive a \$75 U.S. Savings Bond, and the "Best of Show" winner will earn a \$100 U.S. Savings Bond.

A framed certificate will be awarded to the runner-up in each category.

## Publication

Winning photographs will be published in **The Broadcaster**.

## Deadline

Deadline for entries is **4:30 P.M., FRIDAY, FEBRUARY 26, 1988.**

For more information, call Ext. 2546 or 2490.



# The Broadcaster

## ...serving CPS and its employees for 65 years

*"The columns of this paper are to be a clearinghouse for the activities of the employees; a medium through which they may express their thoughts; a wire establishing direct contact with the Executive Department and a means of uniting the Public Service family..."* wrote Sid Ballinger, first Editor of **The Broadcaster** in August 1922.

Thus, the company magazine, published by and for the employees, began. **The Broadcaster** documented events large and small for the next 65 years and is today the longest-published company magazine in San Antonio.

The readership includes 3,500 CPS employees as well as journalists, influential civic and political leaders and citizens who have access to the magazine at libraries in the CPS service area.

The lively, informative publication was 20 years old when the City of San Antonio became the owner of City Public Service in October 1942. At that time, all advertising and publicity activities were discontinued. But **The Broadcaster**, that vital internal communications link, continued and expanded its mission.

The publication's chief objectives are to communicate CPS news, to record the utility's history, to recognize outstanding employee achievement and to provide support to civic organizations and community causes.

**The Broadcaster** broke the inside story of the first natural gas being piped into San Antonio in 1922, and since has recorded every major CPS event — City ownership of CPS, World War II shortages, the vast expansion of the gas and electric systems, the coming of computers, gas shortages and fuel diversification and the coming of nuclear power. Two special editions chronicled the history of the gas and electric systems and, most recently, a complete history of CPS under municipal ownership.

From the sale of the old San Antonio Public Service Company in 1942 through



Sid Ballinger, first editor of **The Broadcaster** from 1922 to 1945 and Ed Georges, employee and scorekeeper for the CPS baseball team, discuss an article for an issue of **The Broadcaster** in 1923.

the subsequent challenges facing CPS — gas shortages, the need for higher rates, the turnaround from load building to energy conservation, the gas and coal settlements, the changes caused through renovation — **The Broadcaster** has covered major stories to make employees aware of the problems and achievements of their organization.

Although news stories are regularly sent to the media as events take place, **The Broadcaster** is still a fertile field for media feature stories. When Linemen first tossed a basketball poletop to poletop, that innovative training story from **The Broadcaster** was carried in newspapers throughout the country. Other stories have been picked up locally — the first aerial baskets, plastic gas pipe, the opening of the Gas and Electric Operations Center, joint trenching of gas and electric services, the 1000th coal train and the personal data recorder system used by meter readers, to name a

few.

**The Broadcaster** recognizes as many employees as possible within its pages to spread the news about employees who contribute toward the betterment of the organization. Safety and Helping Hand awards, service club activities, in-depth features of general interest and area reporters' information all provide recognition for a job well done.

Publicizing CPS programs such as Radio Watch, the Speakers Bureau, Public Safety Awareness, Energy Conservation, the Winter Assistance Relief Mobilization program and other service-related opportunities in **The Broadcaster** enhances the positive image of CPS.

As **The Broadcaster** rounds its 65th year, it will continue to record events as they happen, the stories behind these events and the important contribution each employee makes toward building an outstanding gas and electric utility.



# Scene at CPS



Welcome to the following employees:

## Materials and Transportation

**Mark Byrd, William Lex and Anthony Ford**, Utility Workers; **Tri Ngoc Dang and Christopher Brown**, Garage Trainees.

## Customer Services

**Norma Moya, Clara Leal, Sylvia Guevara, Laura Turner, Alisa Flores, Patrick Clancy, Lisa Felux, Virginia Brown, Tracy Moreno, Melanie Marsh, Silvano Bonanni, Stephen Seller, Robert Dominguez and Leticia Rea**, Clerks I; **James Montgomery and Karma Nilsson**, Engineers; **Carlton Gunn Jr.**, Conservation Analyst.

## Financial Services

**Yvonne Farias, Christina Romo, Tammy Real and Cristina Martinez**, Clerks I; **Roy Elizondo**, Internal Auditor.

## Personnel Administration

**Sylvia Rodriguez**, Clerk I.

## Construction

**Michael Pytel, Joe Ducharme, Daniel Fohn, Daniel Rocha, Kenneth Kotara, Irving Prince, Tony Sowell, David Ward, Frank Gamez, Carlos Pena, Herman Gonzalez**,

**Earl Rodgers, Kimberly Valadez, Raul Leal, Keith Wiatrek, Jeffrey Pollok, Hoyt Watson, Debbie Rhew, Yvonne Perales, Shirley Miller, Brenda Buffin, Cepriano Alfaro, Dolores Ullrich and Charles Santos**, Utility Workers; **Marion Hinton**, Clerk I.

## Personnel Services

**Jo Ann Zamora**, CBX Operator and **Francisco Arredondo**, Custodian.

## Transmission and Distribution Engineering

**Sam Le**, Engineer.

## Operations

**Matthau E. Casanova, Anthony Shawn, Kenneth Dickson, Reginald Manley, Kevin Pollok, Karl Kacmarek, Troy Brown, Veronica Ledesma and Michael Jordon**, Utility Workers; **Daniel Brooker**, Clerk I.

## Production

**Paul Sagemuehl**, Instrument Trainee; **Beth McDonald and Rodney Ewald**, Coal Operators; **Deborah Hilbig**, Clerk II; **Arthur Gardiner and Sandra Elliott**, Utility Workers; **John Harris and Jesse Gonzales**, Engineers.

## Data Processing Services

**Kathryn Parr, Mary Wagner and Debra Vela**, Programmer Analysts.

## Administrative Services

**Rich Murray, Luis Longoria and Leticia Orozco**, Clerks I.

## Generation and Environmental Planning

**Ayen Alem Berhanu**, Economic Analyst.

## Tower Life Building

by **Jean Sondley**, Ext. 2832

**Bill and Peggy Hartman** took a fun four-day trip to Las Vegas where they saw five shows and left behind some money for future winners...**A.L. "Woody" Woods** is an energetic working pastor. He planned and is helping to build the new Second Baptist Chapel in Pleasanton.

Consumer Services' new portable exhibit system with colorful enlarged photos taken by **Al Major** features the South Texas Project, the Deely Plant, CPS transmission and distribution towers, and the front cover picture of the current annual report. The attractive exhibit was

shown at the South Texas Housing Expo in October. In November, it was used at a CPS co-sponsored "Lighting Your Way to Savings" seminar at La Mansion del Norte. The eye-catching display is manned by Consumer Services employees and will be used at trade shows and other CPS special presentations.

## Security

by **Richard Stewart**, Ext. 3600

After serving a term as president of the Retired Enlisted Association, **Tom Allen** recently became a member of the executive board.

## River Level

by **Patty Gonzales**, Ext. 2107

**Rodolfo Longoria** was recently sworn in as president of the Retired Enlisted Association. Longoria is a disabled Vietnam War veteran with two purple hearts and a bronze star decoration.

**Clarence "Bear" Pawelek** caught a four and a half-pound bass and shot two five-point bucks, one javelina and eight rabbits during the Thanksgiving holidays at his deer lease south of D'Hanis.



# Scene at CPS

## Promotions and Reassignments



**Mike Vorndam**, Superintendent of Energy Control, Jones Avenue, is originally from Newport, Rhode Island. He graduated from Richard King High School in Corpus Christi and went on to earn a bachelor of science degree in electrical engineering from Texas A&I University. He joined CPS in 1972 as a Junior Engineer in the Operations Department. Three years later he earned a promotion to Project Engineer and then advanced to Chief Computer Engineer in 1983.



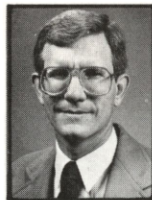
**Nick Flores**, Superintendent of Underground Residential Distribution, Mission Road Construction Center, is a native of San Antonio and received his high school diploma from St. Gerard. He then moved on to the University of Texas at Austin where he earned a bachelor of science degree in electrical engineering. His first job with CPS was in 1973 in overhead research and design. He advanced through the engineering ranks while working on various projects ranging from systems development in data processing to transmission and distribution engineering jobs. His latest engineering efforts have been in the Generation and Environmental Planning Department with the Automated Mapping/Facilities Management Project.



**Les Barrow**, Superintendent of Electric Operations, Jones Avenue, is a native of Sinton but has lived in San Antonio most of his life. He graduated from Holmes High School and attended Southern Methodist University where he earned a bachelor of science degree in electrical engineering. He came to work at CPS in 1973 as a Junior Engineer. He advanced to Project Engineer, Lead Engineer and Substation Test and Maintenance Engineer before his promotion to Superintendent of Electric Operations.



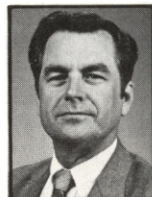
**Mike Hardt**, Director of the Nuclear Division, Main Office, is a native of San Antonio. He received his diploma from Burbank High School and obtained a bachelor's and master's degree in physics from Trinity University. Hardt later earned a master's degree in nuclear engineering from Texas A&M. He was employed by CPS in 1973 as a Junior Engineer. He subsequently was promoted to Project Engineer and spent two years in Houston during the early stages of the South Texas Project nuclear power plant. Upon his return, he spent five years in power plant engineering and then moved up to Chief Nuclear Engineer before his recent promotion to Director.



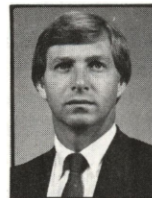
**Dennis Voges**, Superintendent of the Fuels Division, Main Office, is a New Braunfels native and graduated from New Braunfels High School. He pursued a mechanical engineering degree at the University of Texas at Austin and graduated in 1970. His work at CPS began in engineering that same year. In 1973, he was promoted to Project Engineer. Five years later, he advanced to Principal Engineer in the Gas Engineering and Fuels Division and then to his new job.



**Mike McDougall**, Superintendent of the Meter and Service Division, Jones Avenue, attended Edison High School and then Texas A&I University where he earned a bachelor of science degree in electrical engineering. A native San Antonian, McDougall was employed by CPS in 1972 as a Junior Engineer in the Operations Department. In 1977, he advanced to Project Engineer in Power Plant Operations. He became Lead Engineer in the Standards Section and was later promoted to Principal Engineer in Overhead Distribution.



**Ken Ballard**, Director of Purchasing, Tower Life, is a 23-year CPS employee and San Antonio native. He attended South San High School and graduated from St. Mary's University with a degree in business administration. He began his career with CPS in the Gas Department, then worked in the Personnel Department before becoming a Supervisor in the Customer Services Department. He was promoted to Director of Transportation, where he supervised the operation and maintenance of the CPS fleet of motor vehicles, before assuming his present position.



**Lee Rauschuber**, Director of Claims, Main Office, also a native San Antonian, is a graduate of Sam Houston High School and of Southwest Texas State University where he earned a degree in business administration. In 1978, he was certified as an associate in claims by the Insurance Institute of America. Rauschuber was employed by CPS as Claims Supervisor in 1979. He held that position until his recent advancement to Director.



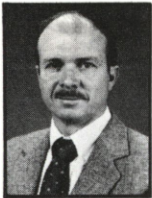
**Anna San Roman**, Director of Equal Employment Opportunity (EEO), Main Office, came to work for CPS in 1983 as an EEO Analyst. She progressed to Project Analyst before her promotion to EEO Director. San Roman is a graduate of Providence High School and St. Mary's University where she obtained a degree in business administration.



# Scene at CPS



**Eugene A. Duke**, former Superintendent of System Engineering in the Generation and Environmental Planning Department, assumes the position of Superintendent of Resource Management in the Gas Engineering and Fuels Department, Main Office. Duke holds bachelor of science degrees in mechanical engineering and in agriculture from Texas A&M. In 1961, Duke began at CPS as a Cadet Engineer and later held other engineering positions. From 1966 to 1969, Duke was assigned to Special Engineering. In 1970, he was promoted to Senior Engineer and in 1974 Duke became Superintendent of Quality Control. He was later reassigned to the Generation Design Division and the Generation Construction Division. The mechanical engineer also was Superintendent of the STP Transmission Project in 1979, Generation and Planning in 1984 and System Engineering in 1986.



**Wayne Fix**, former Operations Engineer, was promoted to Superintendent of the Transmission Division in the Transmission and Distribution Engineering Department, Main Office. Fix, a graduate of Texas A&M in electrical engineering, joined CPS in 1969 as a Cadet Engineer. He was subsequently promoted to Junior Engineer, Project Engineer, Principal Engineer and Operations Engineer.



**John W. Schattberg**, former Superintendent of the Mechanical Division of Production and Power Plant Engineering, transferred to Superintendent of Project Control of the Power Plant Engineering Department, Main Office. Schattberg, a Texas A&M graduate in mechanical engineering, came to CPS in 1950 as a Relay Maintenance Engineer. He later held the positions of Junior Engineer, Mechanical Designer, Senior Engineer and Chief Engineer. In 1969, Schattberg was promoted to Superintendent of the Mechanical Division.



**Guy S. Halter** was reassigned from Superintendent of the Transmission Division of Transmission and Distribution Engineering Department to Superintendent of the Technical Division in the Power Plant Engineering Department, Main Office. After graduating from Texas A&M with a bachelor of science degree in electrical engineering, Halter came to work at CPS in 1947 as a Relay Tester. Other positions held include Substation Engineer, Project Engineer and Senior Engineer of Generation Design. In 1974, the electrical engineer was promoted to Superintendent of Generation Design and to Superintendent of the Transmission Division in 1976.



**Joseph E. Keffe**, Director of Transportation, Salado Street, was born in Chicago, Ill. Keffe graduated from Central Catholic High School and later received a degree in business administration from St. Mary's University. Joining CPS in 1952 as a warehouseman, Keffe subsequently advanced to Storeroom Clerk, Cadet Accountant, Salvage Supervisor, Storekeeper II, Senior Storekeeper, and Supervisor of Purchasing. In 1976, he was promoted to Superintendent of Purchasing and in 1981 to Director of Stores, a position which he held until his recent reassignment.



**Wayne A. Goertz**, former Disbursement Supervisor of the Financial Services Department, ascended to Superintendent of the Contracts and Services Division of the Field Administration Department, Jones Avenue. Goertz began as a Meter Reader at CPS in 1971. After receiving his bachelor of business administration degree from St. Mary's in 1976, he became an Internal Auditor. The Certified Public Accountant has supervised accounting controls, operating and financial auditing, property accounting, contract administration and disbursements.

## 1st Floor Main Office

by Gloria Esquivel, Ext. 2454

**Annette Wengler** vacationed in Acapulco, Mexico, with friends...**Debbie Holdman** visited Pensacola, Fla., with her sister, and son Ricky got to see the ocean for the first time...**Dorothy Galindo** visited relatives in Phoenix, Ariz.

**Freddie Ramage's** daughter April made patrol of the month at Hidden

Forest Elementary...**LaQuita Kalisky** and her family vacationed in Arlington and took in "Wet and Wild" and Six Flags. Kalisky says she can't believe she slid down the Cliff Hanger from eight stories up.

**Nora Baker** vacationed in Fort Worth and Six Flags...**Mary Campos** and friends visited Dallas where they went to see Madonna in concert and then to Six Flags.

## Railcar Maintenance

By Linda Delosh, Ext. 4331

**Ray Powell** and wife, Mitzie, recently portrayed historical characters in the movie, "The Price of Freedom," which depicts the battle of the Alamo. The movie, filmed in Bracketville, will premier in San Antonio in the near future. The Powells are members of the Living History Association.



# Scene at CPS

## Salado Street

by Sharon Luther, Ext. 2436

**John L. Jones** is serving a second term as secretary for the San Antonio Chapter of the American Society for Training and Development.

**Sharon Luther** was recently elected to serve her second term as secretary of the San Antonio Chapter of the International Television Association.

**Denise Michelle Wilborn**, daughter of **Irma** and **Ruben Wilborn**, was recently chosen as second runner-up in the third Annual Miss Texas Hispanic Scholarship Pageant. Denise has also been named third runner-up in the 1988 Miss Bexar County Scholarship Pageant.

The CPS Men's Utility Basketball League began its third season which will end in February. The eight-team league will play on Tuesday and Wednesday evenings at Woodlawn Gym.

Two CPS teams are currently participating in a Co-ed Utility Volleyball League, made up of CPS and City Water Board teams. The teams will play through December.

Three Meter and Service Division

apprentices, from the new Field Administration Department, and seven Overhead Construction division apprentices completed the six-month Electric Power System Apprentice training class in October. Field Administration Department Manager **Paul R. Garza** presented certificates of completion to Serviceman Apprentices **Arturo Gonzales**, **Edgar A. Kvapil**, and **Frank G. Revilla**. Overhead Construction Division Superintendent **Leonard H. Hill** presented certificates to Lineman Apprentices **Michael A. Guerra**, **Charles B. Hopkins**, **Joseph P. Kozowyk**, **Arthur Nerio**, **Gilbert H. Villafranco**, **Michael D. Williams** and **James H. Woelke**. The instructors for the class were **C.A. (Fuzzy) Jenschke**, Line Crew Foreman and **Pat W. Pollok**, Journeyman Lineman.

## 8th Floor Main Office

by Norma Puente, Ext. 2053

**Jesse Ponce** visited his father in Ohio and then both crossed the border to Windsor, Canada, and toured the area.

## National Champs

The Striders placed first among 10 corporate teams in the United States in the 1987 U. S. National Corporate Championship on Oct. 17 at Texas Stadium in Irving, Texas.

Team members running the 12-K or 7.5 mile race were **Leonel Luna**, Meter Reader, Meter Reading; **Robert Gutierrez**, Instrument Trainee, Leon Creek; **Jesse Montoya**, Welder Trainee, Sommers Plant; **David Windhorst**, Senior Machinist, Tuttle Plant; **Mark Codd**, Equal Employment Opportunity Analyst, Main Office; **Abe Parazo**, Coach and Principal Engineer, Main Office; and **Lynn Arneson**, Environmental Analyst, Main Office.

"This is our first national championship. We are very proud of this honor. This has been one of the best years for the Striders. We've won several state championships, but this is like the cherry on top of ice cream," Parazo stated.

Earlier this fall, the Striders won the Mayor's Cup Award in the Sixth Annual 10-K City Championship Race. Team members were Luna, Gutierrez, Montoya, Windhorst, and Parazo.

The Striders also held the Mayor's cup in 1985.

## 7th Floor Main Office

by Hope McFadin, Ext. 2665

**Samia** and **Daniel Friesenhahn's** son, **Sam**, was selected to be the Mesquite Trail Drivers' mascot for 1988.

**Don** and **Sharon Fajkus** won a grand prize for two in her bowling league — an all-expense paid trip to Puerto Vallarta.

## Deely Plant,

by Sharon Dibrell, Ext. 4725

**Margaret Quintero** enjoyed a three week stay in Puerto Rico with her family...**Alice Earl**, **Joe Alvarez** and **Jane Dixon** enjoyed a week in Las Vegas and brought back winnings of \$500, \$1500 and \$400, respectively.

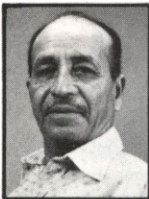


The 1988 CPS Retirees Association Officers include (left to right) **Valree Webb**, secretary/assistant treasurer; **Teddy Mueller**, treasurer/assistant secretary; **Charles McGee**, vice president and chaplain and **Leonard Haller**, president.



# Scene at CPS

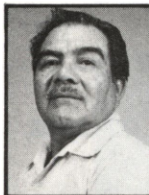
Retiring...



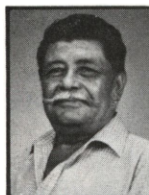
**Apolinar M. Covarrubias**, Crewman Helper I, Southwest Service Center, was hired at CPS in 1961 as a Laborer in Gas Distribution. He was promoted to Utility Worker II in 1970 and to Crewman I in 1979. Covarrubias and his wife, Maria, have two grown children, Apolinar Jr. and Janie. The Crewman Helper lists hunting as his favorite hobby.



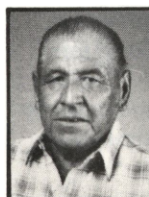
**Guadalupe B. Gutierrez**, Crewman I, Mission Road Construction Center, is retiring after 26 years of service — all in Gas Distribution. He started as Laborer at Salado Street and moved up to Special Laborer then to Crewman I at Mission Road Center. Hunting and fishing are priorities for Gutierrez during retirement.



**Ignacio M. Rodriguez**, Lead Janitor, Salado Street, was hired in 1960 as a Laborer in Gas Distribution. He advanced to Special Laborer/Utility Worker, then Janitor, and in 1984 was promoted to Lead Janitor. A native of Evansville, Texas, Rodriguez and his wife, Avelina, have two grown children, Jesse and Rita. The family shares an interest in gardening and church activities.



**Dianisio Campos**, Crewman I, Mission Road Construction Center, came to work in 1959 as a Laborer in Gas Distribution. He moved up to Utility Worker II in 1972 and to Crewman I in 1979. Campos and his wife, Isabel, have six children, 30 grandchildren and seven great-grandchildren. During retirement, he plans to spend a lot of time with them.

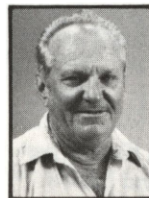


**Cristobal Arguello**, Operations Pipeman II, Mission Road Construction Center, came to work as a Laborer in Construction in 1962. He advanced to Special Laborer and to Pipeman in 1982. Arguello and Catarina, his wife, have three children, Alex, Susie and Mary, and five grandchildren. Arguello's hobbies include raising animals, growing watermelons and dancing.



**David L. Mellene**, Telephone Contact Unit Supervisor, Tower Life Building, is retiring after 35 years at CPS, a career which began with 15 years as a Meter Reader. He also served as a Collector, Office Contact Representative and a Credit Analyst. A native of Indianapolis, Ind., Mellene married a San Antonio girl in 1952.

Mellene and Charlotte have two children, David and Shannon. Mellene says he looks forward to spending some time deer hunting.

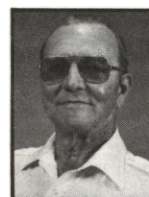


**Milton C. Noack**, Equipment Operator, Northwest Service Center, started his CPS career in 1951 as a Lineman Helper at Jones Avenue. He was promoted to Cable Splicer Helper and then to Equipment Operator at the Southwest Service Center. He moved to Northwest Service Center 11 years later. Noack and his wife, Mary Beth, are looking forward to family get-togethers at their house at Medina Lake where they will move in the future.



**Carl L. Ponzio**, Chief Clerk, Southwest Service Center, began at CPS in 1953 as a Line Helper at Jones Avenue. He switched to Clerk in the Electric Department, was subsequently promoted to Senior Clerk, and then to Chief Clerk at Southwest Service Center in 1983.

Ponzio and Rita have three grown children, Diana, Debra and Carl Jr. The Chief Clerk is a member of the board of directors of the St. Francis De Paul Christopher Columbus Italian Society.



**Edward P. Carlucci**, Security Officer, Main Office, and his wife, Lois, are having the time of their lives traveling around the country in their RV. Carlucci was a Security Officer at CPS 11 years prior to his retirement. Carlucci and Lois have three sons, Thomas, Richard and Kenneth. In addition to traveling, the pair enjoy bowling,

horseshoe pitching and following their favorite football team on TV.



# Scene at CPS



Congratulations to the following employees on their recent promotions:

## Materials and Transportation

**Matias Tapia**, Car Washer; **Debra Melton**, Garage Clerk and **Deann Dziuk**, Clerk II.

## Customer Services

**Thomas Van Winkle**, **Greg Ross**, **John Distefano** and **Lillian Diebel**, Meter Readers; **Patricia Rosas** and **Alfred Duran**, Energy Utilization Surveyors; **Raymond Doege**, Routing Meter Reader; **Dorothy Orms**, Clerk II.

## Production

**Monica Pollok**, Boiler Maintenance Trainee; **Teresa Gust**, Laboratory Assistant; **Jessie Peterson**, Welder Trainee; **Chris Moczygemba**, Electrician Trainee and **Patty Lynn**, Instrument Trainee.

## Operations

**Ernest Kowalik**, Service Crew Foreman; **John Sims**, Gas Trainee; **Leticia Buentello**, Data Control Clerk and **Lauro Garza**, Tester I.

## Data Processing Services

**Robin Baker**, Equipment Installer; **Barbara Welch** and **Debbie Brown**, Data Entry Operators.

## Financial Services

**Arlene Silva**, Clerk II.

## Legal and Benefit Services

**Nancy Waclawczyk**, Claim Processor I; **Julie Ann Colsten**, Claims Representative; **Helen Cantu**, Clerk II and **Alferio Cervantes**, Collection Adjuster.

## Construction

**Michael Kane**, URD Trainee; **Ronald Sova**, Main Crew Foreman; **Terri Martinez** and **Jesus Renteria**, Equipment Operators; **Robert Sussman**, Service Crew Foreman; **Christine Gueldner**, Clerk III and **John Dikes**, Construction Supervisor.

## Power Plant Engineering

**Mary Acosta**, Clerk II.

## Employee Relations

**Lora Tumlinson**, Secretary/Manager.

## Generation and Environmental Planning

**Jeffrey Bielefeld**, Applications Specialist.

## Training Completed

Thirty CPS employees recently completed the 13-week supervisory training course, "Principles of Supervision." Certificates of completion were presented to the following graduates at Villita Assembly building: **Bryan C. Adam**, Senior System Planner; **Donald L. Bernard**, Main Crew Foreman; **Malford E. Brehm Jr.**, Chief Clerk; **Robert J. Briggs**, Planner III; **Acie C. Carr Jr.**, Warehouse Foreman; **Richard Castrejana**, Project Engineer; **Carolyn Denson**, Credit Union Manager; **Doris F. Dietert**, Systems Analyst; **Carroll Dorsett**, Assistant Supervisor, Engineering and Technical; **Jesse J. Felux**, Shop Foreman; **Mirta R. Garcia**, Buyer; **William V. Hartman II**, Consumer Services Supervisor; **Arnold Wade Harvey**,

Chief Clerk; **Deborah A. Henrich**, Field Contact Assistant Supervisor; **David B. Howard**, Senior Photo Lithographer; **George A. Kassise**, Junior Engineer; **James N. Koenig**, Civic Improvement Coordinator; **Georgia L. Koepp**, Remittance Process, Assistant Supervisor; **Michael K. Kotara**, Junior Engineer; **Emily A. Lew**, Systems Analyst; **Lynell McClinton**, Senior Financial Analyst; **David R. McCormack**, Planner III; **Ted M. McFadin**, Senior Accountant; **Oscar San Miguel**, Computer Operator III; **Paula E. Miles**, Project Engineer; **Samuel A. Moreno Jr.**, Main Crew Foreman; **Leo Pacheco**, Assistant Supervisor, Gas Fuels and Resource Management; **Rudy W. Stappenbeck**, Shop Foreman; and **Hector V. Torres**, Project Engineer. Training instructor for the class was **Fred Villasenor**.

## Longoria and Persyn Named

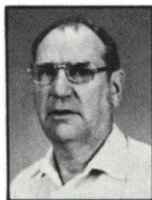
**Rodolfo Longoria**, Graphic Artist, and **Ernest Persyn**, retired Safety Supervisor, have been appointed to the Community Action Advisory Board under the Department of Human Resources and Services of the City of San Antonio.

The Community Action Advisory Board provides social services to the community such as grants for utilities and housing, counseling, emergency food, clothing distribution, bus tickets, form preparation assistance and income tax preparation. The services are funded by the Texas Department of Community Affairs.



# Spotlight on Service

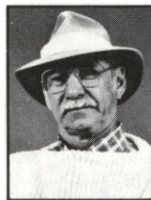
**35  
Years**



**Robert A. Poerner**  
Main Office



**Joseph E. Keefe**  
Salado Street



**John G. Newman**  
Tuttle Plant



**William S. England**  
Northwest Center

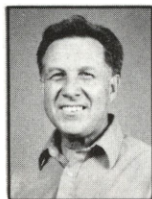
**25  
Years**



**Patricia M. Curtis**  
Main Office



**Ascencion Avila**  
Southwest Center



**Francisco V. Cortez**  
Mission Road Center



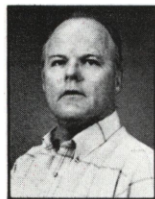
**Eleanor M. Caballero**  
Tower Life Building



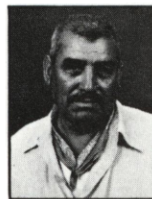
**Malford E. Brehm**  
Northwest Center



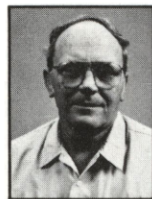
**E.W. (Wes) Dorsett**  
Braunig Lab



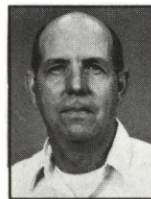
**James Hammons**  
Sommers Plant



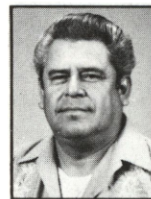
**Martin Buentello**  
Southwest Center



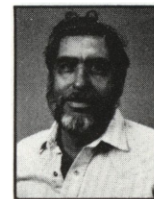
**Howard Meiske**  
Jones Avenue



**Milton Jung**  
Main Office



**David Sanchez Jr.**  
Northwest Center



**Victor P. Griego**  
Southwest Center

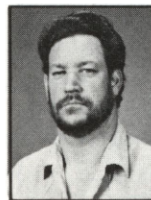


**Raymond P. Klug**  
Southwest Center

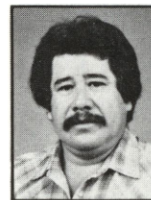
**15  
Years**



**Jovita S. Zapata**  
Main Office



**William D. Kaitner**  
Braunig Plant



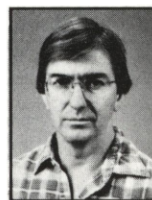
**Jesus D. Renteria**  
Northwest Center



**Tomas A. Ruiz**  
Mission Road Center



**Blanche A. Vara**  
Main Office



**Vaughn W. Mereco**  
Sommers Plant



**John M. Pawly**  
Jones Avenue



**Leroy E. Schulmeier**  
Jones Avenue



**Diane C. Lara**  
Main Office



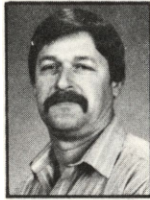
**Jacinto S. Muniz**  
Northwest Center



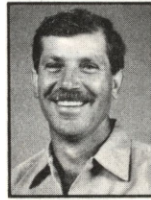
# Spotlight on Service



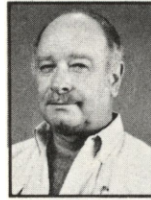
**Deborah A. Henrich**  
Customer Service



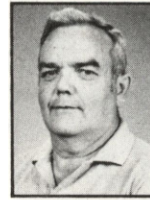
**James W. Ramzinski**  
Dealy Plant



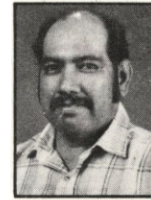
**Leroy F. Pawelek**  
Meter Reading



**Floyd J. Jenschke**  
Sommers Plant

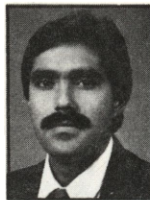


**James C. Broyles**  
Braunig Plant

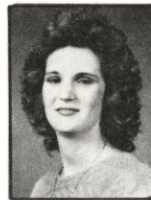


**Guadalupe Gutierrez**  
Sommers Plant

**5  
Years**



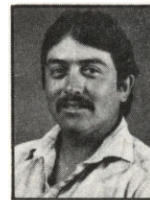
**John Vargas**  
Main Office



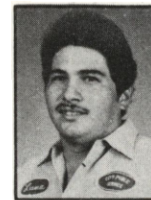
**Sharon H. Wiatrek**  
Jones Avenue



**Patricia Wiatrek**  
Main Office



**Arthur R. Nerio**  
Southwest Center



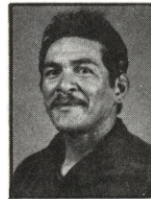
**Albert D. Luna**  
Mission Road Center



**Diane M. Garcia**  
Northwest Center



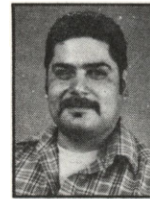
**Michael A. Guerra**  
Southwest Center



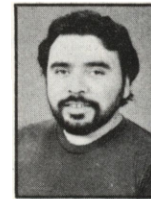
**Desiderio Rangel Jr.**  
Northwest Center



**Maria C. Baigen**  
Tower Life Building



**Orlando Cantu**  
Salado Street



**Raymond R. Quintanilla**  
Salado Street



**Robin H. McFarlane**  
Main Office



**Mary L. Villagran**  
Customer Service



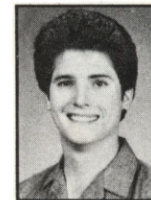
**Elizabeth L. Armistead**  
Tower Life Building



**Martha Sue Carnes**  
Eastside Center



**Sharon K. Johnson**  
Tower Life Building



**Marvin P. Laskowski**  
Mission Road Center



# The Broadcaster

...published for the employees and retired employees of City Public Service and their families.

## MANAGING EDITOR

Irma Orozco

## STAFF WRITERS

Pat Curtis, Sandra Brown

## CHIEF PHOTOGRAPHER

Al Major

## GRAPHIC DESIGN

Rodolfo G. Longoria, Manuel Davila

## TYPESETTING

Patty Gonzales

## PHOTOLITHOGRAPHY AND REPRODUCTION

Tony Rittimann, Raymond Prouty, Lupe Anguiano, David Howard

## AREA REPORTERS

### Main Office

Gloria Esquivel, 1st Floor  
John Brogan, 2nd Floor  
Bill Loftin, 3rd Floor  
Janie Alvarado, 4th Floor  
Lesley Lally, 5th Floor  
Isabel Hernandez, 6th Floor  
Hope McFadin, 7th Floor  
Norma Puente, 8th Floor  
David Jones, 8th Floor  
Ramona Flores, 9th Floor  
Kathy Yates, 10th Floor  
Patty Gonzales, River Level

### Tower Life Building

Norma Sandoval, Jean Sondley, Gloria Lopez, Zelma Turner

### Customer Service Center

Barbi Hernandez, Pat Herrera

### Salado Street

Sharon Luther, Sylvia Castillo

### Jones Avenue

Rosemary Fanner, Richard Stewart

### Mission Road Customer Center

Milton Randall

### Mission Road Center

Josephine Martinez

### Eastside Service Center

Mary Ann Wilson

### Eastside Customer Service Center

Carol Brooks

### Northwest Center

Christine Gueldner

### Southwest Center

Mary Martinez

### Westside Customer Service Center

Rose Menchaca

### Meter Reading

Norma Moya

### Braunig Plant

Leroy Sellers

### Deely Plant

Sharon Dibrell, Linda Delosh

### Tuttle Plant

Alicia Gomez

### Sommers Plant

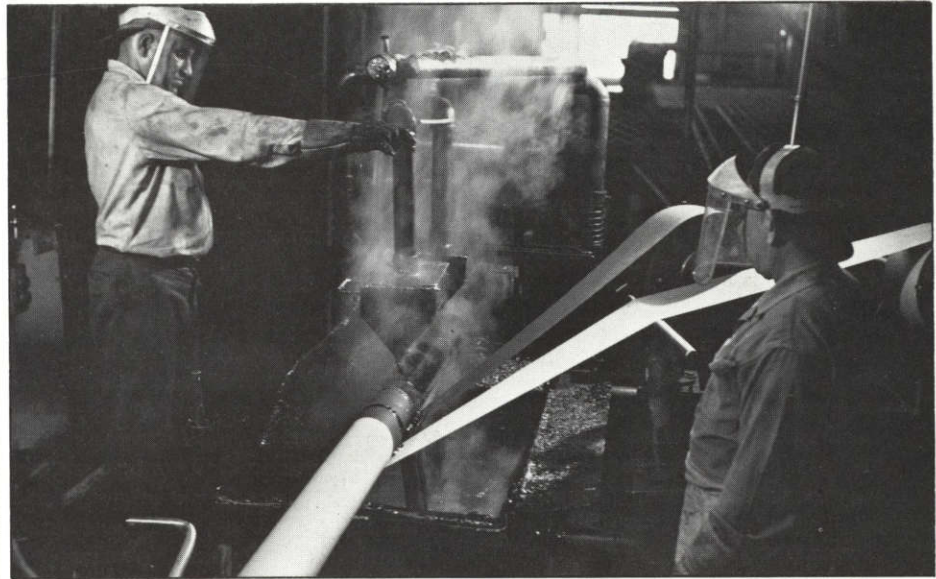
Ronda Reisdorph

### Leon Creek Plant

Leticia Gonzalez

Mail all correspondence to **The Broadcaster**, River Level, Main Office, or call Ext. 2490 or 2546. **The Broadcaster** is produced by City Public Service's Public Relations Department (**Barbara Stover**, Manager), P.O. Box 1771, San Antonio, Tex., 78296.

# Remember When...



Pipe wrapping at Salado Street. CPS was one of the few Texas utilities which did this in-house.

## 1972

- two hundred guests gathered at the Braunig Plant for a ceremony observing the CPS 25th year of municipal ownership? Mayor W.W. McAllister emphasized the utility's value to the City.

- a tornado blew in knocking down 53 poles, 15 primary lines, 64 services and 79 transformers? Kelly Field was hardest hit.

- digging of Calaveras Lake commenced? The lake would ultimately support three power plants: Sommers, Deely and the new coal plant planned to go on line in 1992.

- the O.W. Sommers Plant was dedicated? The 11-story power plant was named in honor of the former General Manager, who retired after 42 years with CPS.

- CPS received the United Fund Honor Certificate? It is awarded annually to San Antonio businesses whose employees contribute 75 percent or better of their Fair Share.

## 1977

- the Railcar Maintenance Shop was going up? Foundations and tracks were in place, and work was expected to be finished on the 60,000 square-foot facility within a year.

- plans were nearly finished on the Customer Service Center at Mission Road Plant? Unprecedented and unantici-

pated traffic at the downtown location made it necessary to expand service facilities.

- the pipe-wrapping facility was phased out? Increasing use of plastic pipe throughout the system made the old practice of wrapping steel pipe unnecessary.

- **Kenneth Gayle** became the new Safety Supervisor? He moved into the slot following **Sam Hasbrook's** retirement.

## 1982

- General Manager **J.K. Spruce** was the principal speaker for a news conference on winter energy conservation? The conference followed the organization of a special "energy conservation task force" formed by the Consumer Information Division to answer customer inquiries on winter energy efficiency.

- water and air quality were closely monitored at the Braunig Lab? They still are, under guidelines established by federal, state and city governmental agencies.

- CPS carpenters, electricians and maintenance personnel rearranged the Telephone Contact Section to make room for more personnel? These front line representatives have since moved to the Tower Life Building and next year will move to the ninth floor currently being constructed on the Navarro Garage.



# Lifelines

## Hot Tips for Heaters

Proper maintenance of heaters will guarantee a safe and pleasant winter and prevent carbon monoxide poisoning. The Emergency Medical Service (EMS) last year reported 26 cases — 15 adults and 11 children — of carbon monoxide poisoning, according to **Lonnie Icke**, Supervisor of Gas Operations.

“Ninety-nine percent of all carbon monoxide poisonings are due to a filter door which was improperly replaced,” stated Icke.

The silent killer, whose flu-like symptoms include dizziness, nausea, vomiting and severe headaches, takes its victims by surprise. The tasteless, odorless fumes result from improper combustion.

“The symptoms are so similar to the flu that every year CPS sends letters out to emergency rooms in the area warning the doctors to check patients twice, if they present flu symptoms, because it could be carbon monoxide poisoning,” Icke said.



**Operations Services Supervisor Oscar Hines, Southwest Service Center, reminds customers to keep furnaces clean for best heating results.**

### To ensure safety:

- Inspect and clean space heaters and furnaces annually for safe and energy-efficient operation.
- Open windows two inches for fresh air and proper ventilation while operating a space heater.
- Change and replace filters properly on central heating units.
- Use metal hoses on space heaters instead of rubber ones which crack, break and leak, as well as violate the City ordinance.
- Use soap and water to locate natural gas leaks. Call the CPS 24-hour number, 225-2541, if you suspect a gas leak.
- Keep vents, which carry noxious fumes to the outside, clear and unobstructed.
- Look for a blue-burning flame; a yellow flame indicates the danger of carbon monoxide.
- Keep bathrobes, clothing and draperies away from open-flame heaters.

Library  
St. Mary's University  
One Camino St. Maria  
San Antonio, TX 78284

TEXAS DEPOSITORY  
ACADEMIC LIBRARY  
ST. MARY'S UNIVERSITY  
SAN ANTONIO, TEXAS

The **Broadcaster**

FEB 4 1988

PUBLISHED BY CITY PUBLIC SERVICE BOARD—P.O. BOX 1771—SAN ANTONIO TEXAS 78296

BULK RATE  
U.S. POSTAGE  
PAID  
SAN ANTONIO, TEXAS  
PERMIT No 251

TXPUB\_00099