



Municipal Solid Waste in Texas: *A Year in Review*

FY 2012 Data Summary and Analysis

Municipal Solid Waste in Texas: A Year in Review

FY 2012 Data Summary and Analysis

Prepared by
Waste Permits Division

AS-187/13
October 2013



Bryan W. Shaw, Ph.D., *Chairman*
Toby Baker, *Commissioner*

Zak Covar, *Executive Director*

We authorize you to use or reproduce any original material contained in this publication—that is, any material we did not obtain from other sources. Please acknowledge the TCEQ as your source.

Copies of this publication are available for public use through the Texas State Library, other state depository libraries, and the TCEQ Library, in compliance with state depository law. For more information on TCEQ publications, call 512-239-0028 or visit our Web site at:

tceq.texas.gov/publications

Published and distributed
by the
Texas Commission on Environmental Quality
PO Box 13087
Austin TX 78711-3087

The TCEQ is an equal opportunity employer. The agency does not allow discrimination on the basis of race, color, religion, national origin, sex, disability, age, sexual orientation or veteran status. In compliance with the Americans with Disabilities Act, this document may be requested in alternate formats by contacting the TCEQ at 512-239-0028, Fax 512-239-4488, or 1-800-RELAY-TX (TDD), or by writing PO Box 13087, Austin, TX 78711-3087.

How is our customer service? tceq.texas.gov/customersurvey

Table of Contents

About the Municipal Solid Waste Reporting Program	1
Waste Managed by MSW Facilities	1
Who Files Reports.....	2
Reporting Period.....	3
Data Used.....	3
Landfills Reporting	5
Classification of MSW Facilities	7
Landfills	7
Processing Facilities.....	7
Other Information	9
Waste Information.....	11
Capacity Information.....	13
Effect of Recycling on MSW Disposal.....	17
Trend Analyses.....	19
Historical Data for MSW Landfills in Texas	23
Facility Data for MSW Landfills	25
Facility Data for MSW Processing Facilities.....	35
Facility Data for MSW Facilities Recovering Landfill Gas for Beneficial Use.....	43
MSW Waste and Material Type Descriptions.....	47

Tables

Table 1. Landfill Activity Status for 2012.....	5
Table 2. Breakdown of Processing Facilities for 2012	8
Table 3. Breakdown of Waste Landfilled in Texas for 2012	12
Table 4. Disposal Amounts and Remaining Capacity by Facility Type	14
Table 5. Analysis of MSW Landfill Disposal by Texas COGs for 2012	15
Table 6. Breakdown of Diverted Materials for 2012.....	17
Table 7. Number of Texas Counties Served by MSW Landfills for 2012	20
Table 8. Number of Active Landfills by County for 2012	21

Figures

Figure 1. Breakdown of Waste Landfilled in Texas for 2012	11
Figure 2. Texas Total and Per Capita Landfill Disposal	13
Figure 3. Texas Councils of Governments	16
Figure 4. Number of Active Landfills and Remaining Capacity	19

About the Municipal Solid Waste Reporting Program

Municipal Solid Waste in Texas: A Year in Review is submitted by the Municipal Solid Waste (MSW) Permits Section, Waste Permits Division, for publication after the end of each fiscal year. The primary purpose of the summary is to provide data on the amount of waste disposed and processed at MSW facilities during that fiscal year. The report also includes an estimate of the remaining disposal capacity as of the end of that fiscal year.

Waste Managed by MSW Facilities

MSW Definitions. MSW is defined under Title 30 of the Texas Administrative Code (30 TAC), Chapter 330 (Municipal Solid Waste), Subchapter A (General Information). MSW is defined as “solid waste, resulting from or incidental to municipal, community, commercial, institutional, and recreational activities, including garbage, rubbish, ashes, street cleanings, dead animals, abandoned automobiles, and all other solid waste other than industrial solid waste.” Industrial solid waste is defined and regulated under 30 TAC Chapter 335 (Industrial Solid Waste and Municipal Hazardous Waste).

The Texas definition of MSW considers the source, rather than the constituents or properties of the waste. Distributors, retailers, repair services, and the general public are municipal generators; manufacturers are industrial solid waste generators. For example, a power distribution provider is an MSW generator, whereas an electric power generation plant is an industrial waste generator.

It is worth noting that the Texas definition of MSW is more encompassing than that of the United States Environmental Protection Agency (USEPA) and several other states. While the USEPA definition does not include construction or demolition (C&D) waste and municipal sludge, the Texas definition does. Based on the Texas definition, the per capita MSW disposal and generation rates for Texas may appear to be higher than those of other states.

Waste Classifications. Texas also defines industrial solid wastes as being separate and distinct from MSW. In Texas, industrial solid waste may also be defined as hazardous or non-hazardous, with the non-hazardous industrial solid waste further defined by classes.

- **Class 1:** industrial non-hazardous waste that, based on its constituents and properties, may pose a substantial danger to human health or the environment if it's not properly managed. There are special handling requirements for Class 1 wastes at MSW landfills. Solidified industrial sludge containing metals or organics may be a Class 1 waste.

- **Class 2:** industrial solid waste that cannot be described as hazardous, Class 1 non-hazardous, or Class 3. Activated sludge from industrial biological wastewater treatment and trash from plant offices are typically Class 2 wastes.
- **Class 3:** inert and essentially insoluble industrial solid wastes that do not readily decompose. Examples include bricks or concrete from an industrial facility.

It should be noted that waste classified as hazardous by federal rules cannot become non-hazardous through dilution. The Texas classification of Class 1 non-hazardous industrial waste is based on the leachable concentrations of constituents of concern found in the waste.

Under certain circumstances, non-hazardous industrial solid waste may be accepted at MSW landfills. Most MSW facilities may accept Class 2 and Class 3 wastes. Only facilities with dedicated Class 1 cells, which have more protective design requirements, may accept Class 1 nonhazardous waste.

Inactive Facility Requirements. Texas statute allows an open but inactive landfill to reactivate and accept waste under certain circumstances. All open facilities are held to the requirements of their permit, regardless of their operational state.

In accordance with 30 TAC Section 39.510, if a permitted MSW facility has not begun accepting waste within six months of permit issuance or becomes inactive for six months, the owner or operator must post signs at the site specifying the facility's status. Additionally, if the period during which the facility does not accept waste is extended to two years from the date the permit was issued, or it has ceased accepting waste for two consecutive years, the owner or operator must indicate their intent to operate the facility in the future by:

- notifying, in writing, the TCEQ executive director,
- publishing a notice in a local newspaper, and
- mailing a notice to landowners (within 500 feet) and local authorities.

If the owner or operator does not intend to operate the facility, they should request revocation of their permit.

In accordance with 30 TAC Section 330.71 (g), if a registered MSW facility does not commence physical construction within two years of registration issuance, the TCEQ is authorized to automatically terminate the registration.

Who Files Reports

This summary includes data submitted to the TCEQ from both permitted and registered MSW facilities. The data is obtained by the agency under the authority of 30 TAC 330, Subchapter P (Fees and Reporting), which requires registered or permitted facility operators to report the types and amounts of

waste disposed or processed at a disposal facility or processing location.

Reporting Period

Reports from MSW facilities are based on the state's fiscal year, which runs from September 1 through August 31. All references to 2012 in this annual summary are related to fiscal year 2012 (September 1, 2011, through August 31, 2012).

Data Used

The data in this summary are condensed from annual reports submitted by 256 landfills (195 active and 61 inactive or in post-closure care) and 223 processing facilities (179 active and 44 inactive). See Tables 1 and 2 for a detailed breakdown. The MSW Permits Section staff reviewed the data and verified and/or reconciled discrepancies with facility representatives, quarterly report data, and agency records (MSW Records).

Facility reports included:

- operational information (e.g., which counties the facility serves),
- administrative information (e.g., who owns or operates the facility), and
- facility activities (e.g., amounts and types of waste accepted or processed at the facility).

Population data for this summary was obtained from the US Census Bureau's state population estimatesⁱ found at www.census.gov/popest/data/counties/totals/2012/CO-EST2012-01.html.

ⁱ Table 1. Annual Estimates of the Resident Population for Counties of Texas: April 1, 2010 to July 1, 2012; Source: U.S. Census Bureau, Population Division; Release Date: May 2013; <http://www.census.gov/popest/data/counties/totals/2012/CO-EST2012-01.html>

Landfills Reporting

MSW Records indicated that for 2012 there were 299 permitted MSW landfills with a physical activity status of active, inactive, or in post-closure care. Of these, data were submitted for 256 facilities. Landfills not reporting were either inactive or in post-closure care according to MSW Records.

Disposal and capacity data were evaluated for all 195 active landfills. The breakdown of the number of facilities according to activity status in relation to MSW Records and submitted reports is summarized below in Table 1.

Table 1. Landfill Activity Status for 2012

Activity Status	MSW Records	Reports Received
Active	195	195
Inactive – yet to receive waste	14	13
Inactive – previously received waste	28	21
Post-closure care – no longer accepts waste, have installed a final cover system, and do not plan to re-open	62	27
Total	299	256

Classification of MSW Facilities

Landfills

Type I facilities. A Type I landfill is the standard landfill for the disposal of MSW. For 2012, 100 of the active landfills (51.3 percent) were Type I facilities.

Type IV facilities. A Type IV landfill accepts only brush, C&D waste, and other similar waste that will not putrefy. For 2012, 22 of the active landfills (11.3 percent) were Type IV facilities. In addition, Type IV landfills handled 8 percent of the total waste disposed and accounted for 5 percent of the total statewide remaining capacity. However, these landfills are not distributed evenly across the state; approximately 75 percent are located in the Houston-Galveston Area Council's region (HGAC-16)

Arid-exemption (AE) facilities. Type I and Type IV landfills in relatively dry parts of the state may be permitted as arid-exempt landfills. These landfills are limited in the amount of solid waste they may accept and they are exempt from liner and groundwater monitoring requirements.ⁱⁱ In 2012, 72 active landfills (36.9 percent) had an arid exemption. Arid-exempt landfills accounted for 1 percent of the total waste disposed and 1 percent of the total statewide remaining capacity.

Monofills. In 2011, the state began allowing counties or municipalities with 10,000 or fewer people to obtain a permit by rule under 30 TAC 330.7(i) to dispose demolition waste from properties with nuisance or abandoned buildings into disposal facilities that are also owned or controlled by the county/municipality. For 2012, only 1 of the active landfills (0.51 percent) was a monofill (City of Quanah; Permit No. 9003).

Processing Facilities

Permitted and registered solid waste processing facilities are classified as Type V or Type IX facilities.

Type V facilities. Type V facilities transfer, incinerate, shred, grind, bale, compost, salvage, separate, dewater, or reclaim MSW, and/or provide other processing of MSW. They may be authorized by permit. However, some facilities qualify for authorization by registration if they meet specific requirements identified by statute and rule. An example of a facility that would qualify for a registration is a transfer station that includes a material recovery operation that recovers at least 10 percent by weight of the incoming waste stream for reuse or recycling.

ⁱⁱ Title 30, Texas Administrative Code, Chapter 330, §330.5(b).

Type IX facilities. A Type IX facility recovers energy, material, or gas for beneficial use, including landfill mining, within or adjacent to a closed landfill, an inactive portion of a landfill, or an active landfill.

Processing facilities are differentiated by sub-types in MSW Records. The breakdown of the number of active facilities for 2012 according to sub-types in relation to MSW Records and submitted reports is summarized below in Table 2. According to MSW Records, there were 198 active processing facilities for 2012. Of these, 179 facilities reported.

Table 2. Breakdown of Processing Facilities for 2012

Facility Type	MSW Records for Active Facilities		Reports Received	
	Permitted	Registered	Permitted	Registered
Autoclave (5AC)	2	2	2	1
Liquid Waste Processor (5GG)	20	8	19	6
Medical Waste Processor (5MW)	2	7	2	4
Composting (5RC)	6	11	5	11
Recycling & Recovery (5RR)	1	3	1	2
Liquid Transfer Station (5TL)	0	9	0	6
Transfer Station (5TS)	31	68	29	63
Waste Incinerator (5WI)	3	0	3	0
Gas Recovery (9GR)	2	23	2	23
Total	67	131	63	116

Note: In the agency database, facility sub-types are identified using Arabic numbers with abbreviations (e.g., 5GG).

The total reported amount of waste processed by Type V facilities in 2012 was 5.65 million tons.

For the Type IX landfill gas recovery for beneficial use facilities, 15.7 billion cubic feet of gas was processed with 4.72 billion cubic feet distributed off-site. Power generated and used on-site was 534 million kilowatt hours (kWh) while power generated and sold was 255 million kWh.

Other Information

Use of scales. The majority of active landfills in Texas (70 percent) used scales to measure all or some of their incoming waste. Facilities without scales (as well as many facilities with scales) reported waste disposal by volume (i.e., cubic yards), which was then converted to tons for this summary.

Texas solid waste disposal fee. As defined in Title 5 (Sanitation and Environmental Quality) Section 361.013(a) of the Texas Health and Safety Code:

“...the commission shall charge a fee on all solid waste that is disposed of within this state. The fee is \$1.25 per ton received for disposal at a municipal solid waste landfill if the solid waste is measured by weight. If the solid waste is measured by volume, the fee for compacted solid waste is 40 cents per cubic yard or, for uncompact solid waste, 25 cents per cubic yard received for disposal at a municipal solid waste landfill.”

Landfill operators collect this disposal fee as part of the tipping fee they charge their customers. This fee is based on weight or volume, depending upon the type of waste and method of delivery to the landfill.

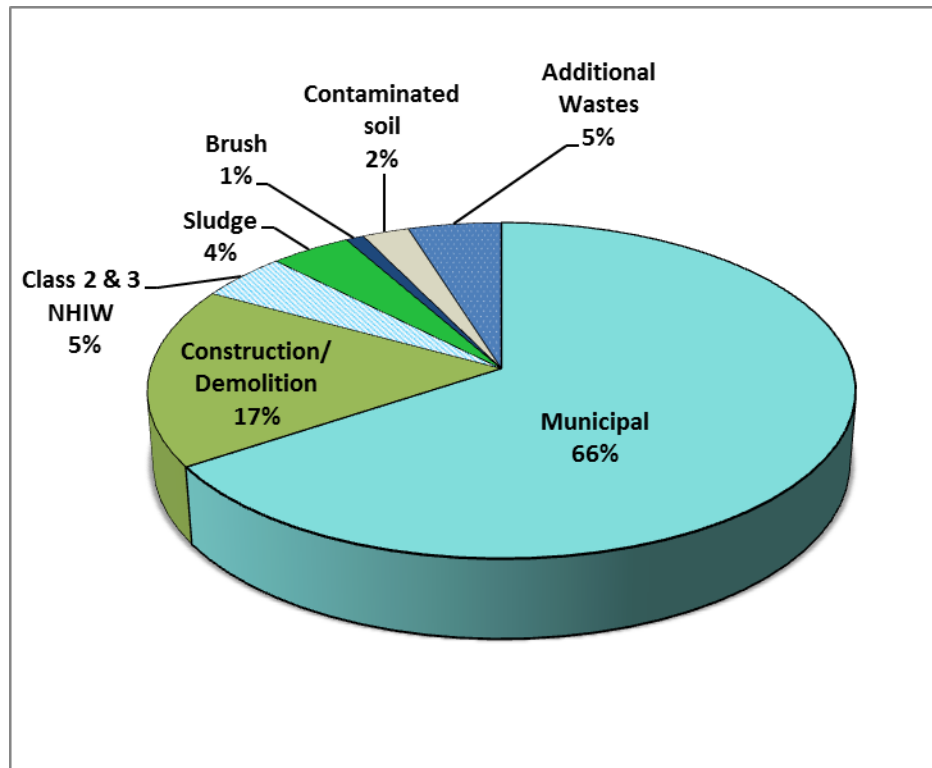
For 2012, 138 landfills reported collecting tipping fees by the ton of waste, and the statewide reported average rate was \$32.60 per ton. Fees for waste measured in compacted cubic yards averaged \$10.12 per cubic yard, with 49 facilities reporting. For waste measured in uncompact cubic yards, 84 facilities reported collecting fees, and the statewide reported average rate was \$10.24 per cubic yard.

Waste Information

Types of wastes. While the majority of MSW disposed in Texas is residential and commercial waste, landfills have difficulty in estimating the amounts received for each waste type. For the purpose of this annual summary, residential and commercial waste are combined and defined as “municipal.” For 2012, municipal waste accounted for approximately 66% of the total waste disposed. At 17%, construction and demolition waste was the second largest waste type disposed in the state. Waste considered as “Additional Wastes” includes, but is not limited to: tires, medical waste, dead animals, litter, grease trap waste, and grit trap waste.

Figure 1 and Table 3 provide an estimated breakdown of waste that disposal facilities accepted in 2012.

Figure 1. Breakdown of Waste Landfilled in Texas for 2012



Note: Class 1 NHIW waste is included in “Contaminated Soil” and “Additional Wastes” categories.

Out-of-State Waste. For 2012, 3 landfills reported receiving MSW from Mexico for a total of 1,634 tons. Nine landfills reported receiving MSW from Arkansas, Colorado, Kansas, Louisiana, New Mexico, and Oklahoma for a total of 189,260 tons. There are no requirements for reporting the amount of MSW that leaves the state.

Table 3. Breakdown of Waste Landfilled in Texas for 2012

Waste Type	Number of Landfills Accepting Waste	Tons Disposed	Percent of Total Tons Disposed
Municipal	150	19,900,199	65.66
Brush	56	285,788	0.94
Construction/Demolition	151	5,265,510	17.37
Litter	16	3,309	0.01
Class 1 NHIW ¹	14	554,332	1.83
Classes 2 and 3 NHIW ¹	51	1,390,674	4.59
Incinerator ash	6	5,530	0.02
Medical waste	12	27,177	0.09
CESQG ²	1	6,099	0.02
RACM ³	34	138,221	0.46
Non-RACM ³	39	129,165	0.43
Dead animals	79	17,071	0.06
Sludge	90	1,269,068	4.19
Grease trap waste	13	24,787	0.08
Grit trap waste	20	28,522	0.09
Septage	1	1,776	0.01
Contaminated soil	46	733,554	2.42
Tires ⁴	28	38,286	0.13
Pesticides	2	50	<0.01
Used Oil Filter	0	0	0.00
Other	35	489,951	1.60
Total		30,309,069	100

1. NHIW (Non Hazardous Industrial Waste)

2. CESQG (Municipal Hazardous Waste from Conditionally Exempt Small Quantity Generators.)

3. RACM (Regulated Asbestos-Containing Material.)

4. Tires – Only split, quartered, or shredded tires may be disposed in a landfill.

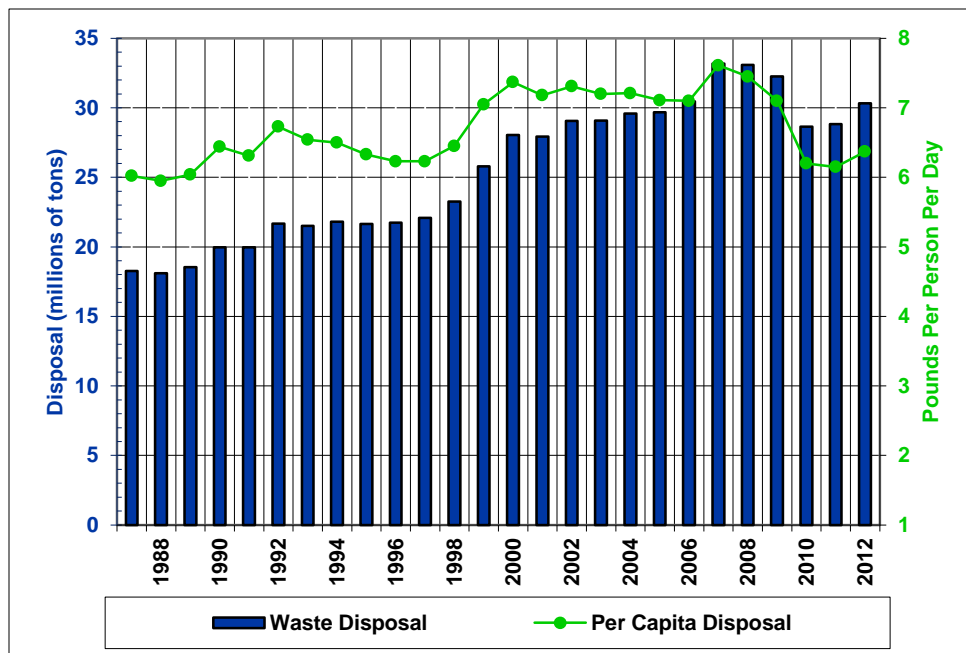
Note: Descriptions for several of the waste types listed in Table 3 are provided at the end of this report.

Capacity Information

Per capita rate. For 2012, total disposal of MSW in the state was approximately 30.31 million tons. Using the state population estimateⁱ of 26,059,203, the per capita landfill disposal rate in Texas was 6.37 pounds per person per day, which is slightly greater than the 2011 rate of 6.15 pounds. During this period, the state’s population increased 1.50 percent.

See Figure 2 for a graphic representation of disposal amounts and per capita rates over time. For more detailed information, please see the “Historical Data for MSW Landfills in Texas” table on page 23 of the report.

Figure 2. Texas Total and Per Capita Landfill Disposal



ⁱTable 1. Annual Estimates of the Resident Population for Counties of Texas: April 1, 2010 to July 1, 2012; Source: U.S. Census Bureau, Population Division; Release Date: May 2013; <http://www.census.gov/popest/data/counties/totals/2012/CO-EST2012-01.html>

Landfill capacity. The total remaining landfill capacity in the state at the end of 2012 was 2.63 billion cubic yards. Based on reported compaction rates, this volume would hold 1.74 billion tons of waste and serve for 57 years.

Table 4 summarizes the remaining capacity for all landfill types. The analyses in this summary are based on the assumptions that no new landfill expansions or new permits will be issued and that the 2012 population and disposal amounts will remain constant.

Table 4. Disposal Amounts and Remaining Capacity by Facility Type

Facility Type	Number of Landfills	Disposal (Tons)	Remaining Capacity (Tons)	Remaining Capacity (Years)*
I	100	27,500,419	1,640,057,464	60
IV	22	2,471,944	81,363,346	33
IAE	34	180,897	10,096,035	56
IVAE	23	42,979	2,307,301	54
IAE and IVAE	15	110,127	6,125,588	56
Monofill	1	2,703	3,157	NA
All types	195	30,309,069	1,739,952,891	57

* Average, assuming the 2012 disposal rate of 30.31 million tons per year.

NA – Not applicable. These facilities are authorized through a renewable five-year permit by rule.

Growth and attrition. According to submitted data, statewide capacity decreased in 2012. The resulting net capacity decreased by approximately 90.93 million tons (roughly 4.12 million cubic yards) or 4.97 percent from the statewide 2011 capacity.

Statewide distribution. Texas appeared to have an adequate reserve of landfill capacity in 2012. This capacity was not evenly distributed across the state. There are 24 Regional Planning Commissions, also known as Councils of Governments (COGs), responsible for MSW management planning on a regional basis.ⁱⁱ For 2012, there were no regions reporting less than 10 years of remaining capacity. However, the South Texas Development Council (STDC-19) region reported 11 years of remaining capacity. The capacity in this region will increase with the opening of the Ponderosa Regional Landfill (Permit No. 2286) in Webb County.

See Table 5 for further capacity details for each COG and Figure 3 for a map of the COG regions.

ⁱⁱ Texas Health and Safety Code, Section 363.0615.

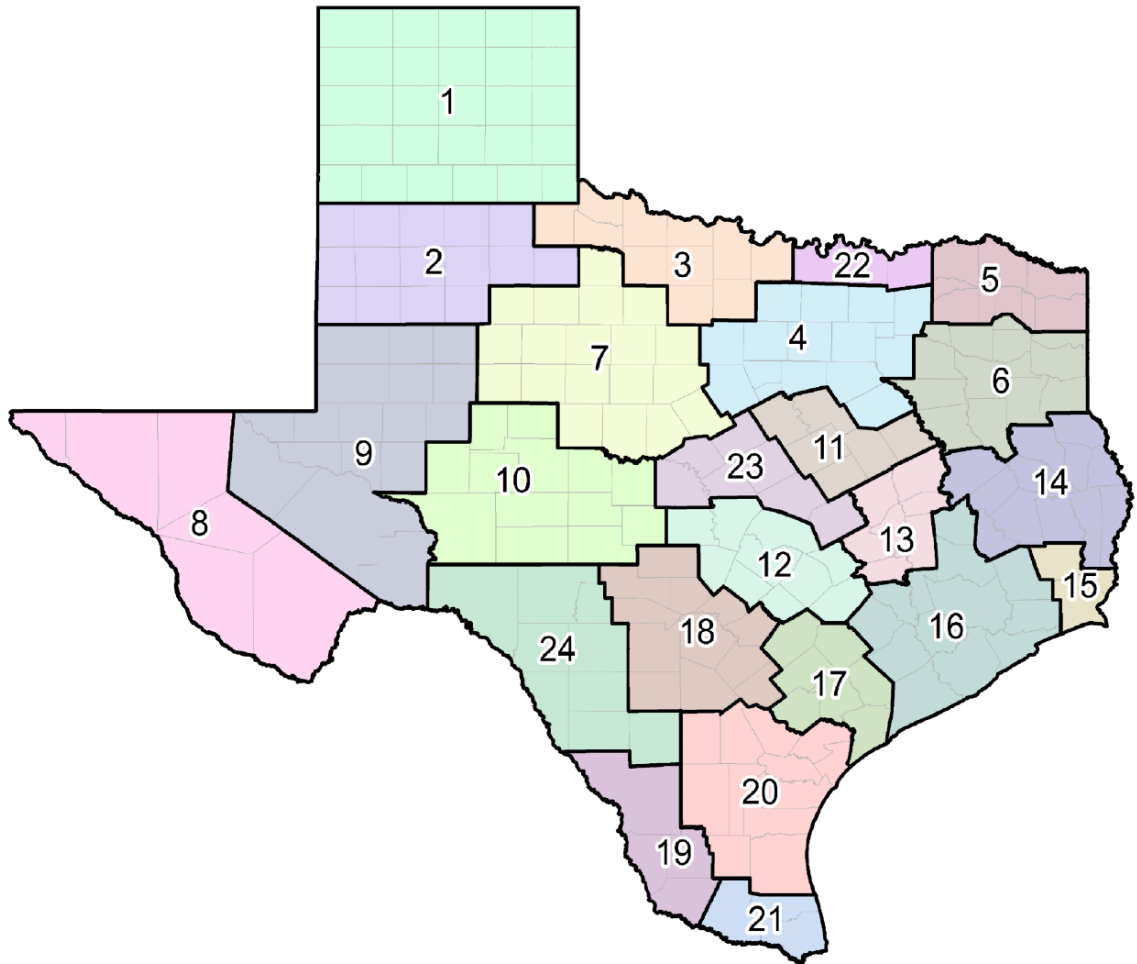
Table 5. Analysis of MSW Landfill Disposal by Texas COGs for 2012

COG	Active MSW Landfills		2012 Disposal				Remaining Capacity		
	Count	% of Total	Tons	% of Total	Population	Per Cap*	Tons	% of Total	Years **
1 PRPC	22	11.28	540,921	1.78	435,408	6.81	46,935,683	2.70	87
2 SPAG	19	9.74	421,731	1.39	418,578	5.52	72,868,137	4.19	173
3 NRPC	3	1.54	283,570	0.94	221,472	7.02	55,983,367	3.22	197
4 NCTCOG	21	10.77	8,285,793	27.34	6,816,147	6.66	371,509,708	21.35	45
5 ARK-TEX	5	2.56	372,936	1.23	282,707	7.23	64,946,031	3.73	174
6 ETCOG	4	2.05	590,592	1.95	839,625	3.85	122,987,356	7.07	208
7 WCTCOG	8	4.10	367,565	1.21	327,753	6.15	92,753,307	5.33	252
8 RGCOG	8	4.10	459,436	1.52	852,173	2.95	23,052,714	1.32	50
9 PBRPC	15	7.69	631,897	2.08	437,899	7.91	51,822,953	2.98	82
10 CVCOG	10	5.13	199,326	0.66	156,834	6.96	4,573,131	0.26	23
11 HOTCOG	4	2.05	687,351	2.27	352,657	10.68	56,753,539	3.26	83
12 CAPCOG	5	2.56	1,949,253	6.43	1,894,561	5.64	73,830,266	4.24	38
13 BVCOG	1	0.51	274,167	0.90	325,857	4.61	20,497,135	1.18	75
14 DETCOG	4	2.05	489,829	1.62	380,734	7.05	43,341,787	2.49	88
15 SETRPC	4	2.05	662,226	2.18	389,980	9.30	31,063,285	1.79	47
16 HGAC	26	13.33	8,376,548	27.64	6,343,971	7.24	299,915,992	17.24	36
17 GCRPC	1	0.51	136,156	0.45	192,462	3.88	4,175,908	0.24	31
18 AACOG	6	3.08	2,701,191	8.91	2,396,103	6.18	147,131,113	8.46	54
19 STDC	3	1.54	341,142	1.13	340,326	5.49	3,790,889	0.22	11
20 CBCOG	8	4.10	704,463	2.32	582,373	6.63	90,499,453	5.20	128
21 LRGVDC	5	2.56	1,132,727	3.74	1,244,167	4.99	27,637,867	1.59	24
22 TCOG	2	1.03	186,496	0.62	194,454	5.26	16,855,284	0.97	90
23 CTCOG	2	1.03	379,503	1.25	463,669	4.48	7,948,593	0.46	21
24 MRGDC	9	4.62	134,250	0.44	169,293	4.35	9,079,393	0.52	68
Totals	195	100	30,309,069	100	26,059,203	6.37	1,739,952,891	100	57

*Pounds per person per day

**Average, at 2012 statewide disposal rate

Figure 3. Texas Councils of Governments



No.	Abbrev.	COG Name
1	PRPC	Panhandle Regional Planning Commission
2	SPAG	South Plains Association of Government
3	NRPC	Nortex Regional Planning Commission
4	NCTCOG	North Central Texas Council of Governments
5	ATCOG	Ark-Tex Council of Governments
6	ETCOG	East Texas Council of Governments
7	WCTCOG	West Central Texas Council of Governments
8	RGCOG	Rio Grande Council of Governments
9	PBRPC	Permian Basin Regional Planning Commission
10	CVCOG	Concho Valley Council of Governments
11	HOTCOG	Heart of Texas Council of Governments
12	CAPCOG	Capital Area Council of Governments

No.	Abbrev.	COG Name
13	BVCOG	Brazos Valley Council of Governments
14	DETCOG	Deep East Texas Council of Governments
15	SETRPC	South East Texas Regional Planning Commission
16	HGAC	Houston-Galveston Area Council
17	GCRPC	Golden Crescent Regional Planning Commission
18	AACOG	Alamo Area Council of Governments
19	STDC	South Texas Development Council
20	CBCOG	Coastal Bend Council of Governments
21	LRGVDC	Lower Rio Grande Valley Development Council
22	TCOG	Texoma Council of Governments
23	CTCOG	Central Texas Council of Governments
24	MRGDC	Middle Rio Grande Development Council

Effect of Recycling on MSW Disposal

Recycling. Public and private programs supporting the state’s goals for reducing, reusing, and recycling assist in preserving disposal capacity in landfills. Throughout the state, paper, glass, aluminum cans, plastic, scrap metal, wood, and numerous other items are recycled every day. Information on TCEQ’s promotion of recycling programs can be found on the agency’s website at www.tceq.texas.gov/p2/P2Recycle/recycling.html.

Currently, the effect of recycling in Texas is difficult to measure. An accurate statewide recycling rate cannot be obtained because there is no requirement to report quantities of materials diverted before reaching the gate at landfills or processing facilities.

Composting. For 2012, 8 landfills, 16 composting facilities, and 2 transfer stations reported a total of 381,827 tons of waste composted.

Diversion. Landfills and processing facilities are required to report the amount of waste diverted from the authorized operations at the facility. For 2012, a total of 1,217,275 tons of materials were reported as diverted for recycling or reuse: 112 landfills diverted 827,301 tons and 75 processing facilities diverted 389,974 tons. A breakdown of the estimated amounts of various material streams that disposal and processing facilities accepted and diverted in 2012 is provided below in Table 6.

Table 6. Breakdown of Diverted Materials for 2012

Material Type	Tons Diverted	Percent of Total Tons Diverted
Yard Waste or Brush	410,796	33.75
Metal	27,002	2.22
Glass	25,568	2.10
Plastics	10,876	0.89
Construction/Demolition Waste	369,957	30.39
Paper/Cardboard	113,663	9.34
Electronic Materials	1,057	0.09
White Goods	1,478	0.12
Tires	14,104	1.16
Automotive	1	<0.01
Shingles	1	<0.01
Used Oil	778	0.06
Unclassified Materials	241,994	19.88
Total	1,217,275	100

Note: Descriptions for several of the material types listed in Table 6 are provided at the end of this report.

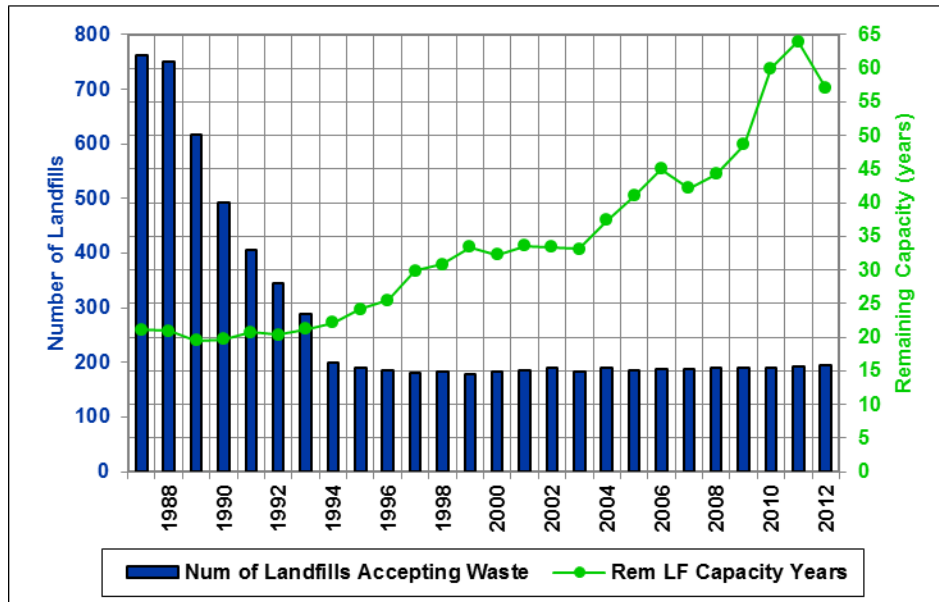
Trend Analyses

Landfill closures. In 1987, there were 763 authorized landfills accepting waste. The reduction of active landfills between the late 1980's and mid 1990's was primarily due to the stringent requirements of the Federal Resource Conservation and Recovery Act (RCRA) Subtitle D. However, since the late 1990s this decreasing trend has leveled out, suggesting a continued move away from smaller community landfills and toward larger regional landfills.

Capacity reserve. From 1986 to the mid-1990s, the state's reserve capacity for disposal was less than 22 years. The current reserve capacity for disposal is approximately 57 years. The increasing reserve capacity trend is attributed to an expansion in the available volume of permitted disposal capacity and to improvements in compaction and diversion. In 1986, the average compaction rate was approximately 650 pounds of waste per cubic yard. The average in 2000 was approximately 1,000 pounds per cubic yard. The 2012 average compaction rate was calculated as 1,301 pounds per cubic yard.

Figure 4 depicts the number of active landfills and the corresponding remaining capacity over time.

Figure 4. Number of Active Landfills and Remaining Capacity



Landfill size. In addition to improvements in the operation of landfills, the size and service areas of MSW landfills have continued to grow. In 1986, the statewide average landfill size was 50 acres with an average depth of 6.5 feet and an average height of 13 feet. According to data submitted and permit records, the statewide average landfill size was 231 acres in 2012. Two landfills reported an increase in acreage through issued permit amendments during the year: Itasca Landfill (Permit No. 241D; NCTCOG-4), and Penitas Landfill (Permit No. 1727A; HGAC-16).

The 2012 average permitted depth for MSW landfills was 35 feet and the average permitted height was 80 feet. The number of landfills with a permitted height over 100 feet was 52, and 17 landfills had a permitted height over 200 feet. In addition, two landfills had a permitted height over 300 feet: Abilene Regional Landfill (Permit No. 1469A; WCTCOG-7) and Greenwood Farms (Permit No. 1972A; ETCOG-6).

Counties served. The 195 active landfills in the state reported the number of counties they served in 2012, as detailed below in Table 7. Service to more than one county was provided by 128 landfills (66 percent).

Table 7. Number of Texas Counties Served by MSW Landfills for 2012

Number of Counties Served	Number of Landfills
1	67
2 – 5	67
6 – 10	40
11 – 15	10
16 – 20	8
>20	3

Table 8 shows the number of active landfills in each Texas County. Counties with a change in number of landfills from 2011 have been indicated.

Table 8. Number of Active Landfills by County for 2012

Anderson	0	Crane	1	Hartley	0	Madison	0	San Patricio	0
Andrews	1	Crockett	0	Haskell	1	Marion	0	San Saba	0
Angelina	1	Crosby	0	Hays	0	Martin	1	Schleicher	2
Aransas	0	Culberson	0	Hemphill	0	Mason	1	Scurry	1
Archer	0	Dallam	1	Henderson	0	Matagorda	0	Shackelford	0
Armstrong	1	Dallas	4	Hidalgo	4	Maverick	2	Shelby	0
Atascosa	0	Dawson	1	Hill	1	McCulloch	1	Sherman	0
Austin	0	Deaf Smith	1	Hockley	1	McLennan	2	Smith	1
Bailey	2	Delta	0	Hood	0	McMullen	1	Somervell	0
Bandera	0	Denton	4	Hopkins	0	Medina	0	Starr	1**
Bastrop	0	DeWitt	0	Houston	0	Menard	1	Stephens	0
Baylor	0	Dickens	0	Howard	1	Midland	1	Sterling	0
Bee	0	Dimmit	1	Hudspeth	2	Milam	0	Stonewall	0
Bell	1	Donley	0	Hunt	1	Mills	0	Sutton	0
Bexar	2	Duval	1	Hutchinson	0	Mitchell	1	Swisher	1
Blanco	0	Eastland	0	Irion	1	Montague	0	Tarrant	3
Borden	0	Ector	1	Jack	0	Montgomery	1	Taylor	0
Bosque	0	Edwards	0	Jackson	0	Moore	3*	Terrell	1
Bowie	2	El Paso	3	Jasper	0	Morris	0	Terry	2
Brazoria	2	Ellis	3	Jeff Davis	0	Motley	1	Throckmorton	0
Brazos	0**	Erath	1	Jefferson	3	Nacogdoches	1	Titus	1
Brewster	2	Falls	0	Jim Hogg	0	Navarro	1	Tom Green	1
Briscoe	0	Fannin	0	Jim Wells	1	Newton	1	Travis	4
Brooks	1	Fayette	0	Johnson	2	Nolan	1	Trinity	0
Brown	1	Fisher	0	Jones	2	Nueces	3*	Tyler	0
Burleson	0	Floyd	1	Karnes	0	Ochiltree	1	Upshur	0
Burnet	0	Foard	0	Kaufman	0	Oldham	1	Upton	2
Caldwell	0	Fort Bend	3	Kendall	0	Orange	0	Uvalde	2
Calhoun	0	Franklin	0	Kenedy	0	Palo Pinto	0	Val Verde	1
Callahan	0	Freestone	0	Kent	0	Panola	0	Van Zandt	0
Cameron	1	Frio	0	Kerr	1	Parker	1	Victoria	1
Camp	0	Gaines	1	Kimble	1	Parmer	0	Walker	0
Carson	1	Galveston	3	King	0	Pecos	1	Waller	0
Cass	0	Garza	1	Kinney	1	Polk	1	Ward	1
Castro	1	Gillespie	1	Kleberg	1	Potter	1	Washington	0
Chambers	2	Glasscock	1	Knox	0	Presidio	1	Webb	1
Cherokee	1	Goliad	0	La Salle	0	Rains	0	Wharton	0
Childress	1	Gonzales	0	Lamar	2	Randall	1	Wheeler	1
Clay	0	Gray	3	Lamb	4	Reagan	1	Wichita	2
Cochran	1	Grayson	2	Lampasas	0	Real	0	Wilbarger	0
Coke	1	Gregg	1	Lavaca	0	Red River	0	Willacy	0
Coleman	1	Grimes	1	Lee	0	Reeves	1	Williamson	1
Collin	1	Guadalupe	1	Leon	0	Refugio	0	Wilson	0
Collingsworth	1	Hale	1	Liberty	0	Roberts	0	Winkler	0
Colorado	1	Hall	1	Limestone	1	Robertson	0	Wise	0
Comal	1	Hamilton	0	Lipscomb	1	Rockwall	0	Wood	0
Comanche	0	Hansford	1	Live Oak	0	Runnels	0	Yoakum	1
Concho	0	Hardeman	1**	Llano	0	Rusk	1	Young	0
Cooke	0	Hardin	1	Loving	0	Sabine	0	Zapata	1
Coryell	1	Harris	14	Lubbock	3*	San Augustine	0	Zavala	2
Cottle	0	Harrison	0	Lynn	1	San Jacinto	0		

* Increase in number of landfills

** Decrease in number of landfills

+ Indicates existing Monofill

Historical Data for MSW Landfills in Texas

Year	Waste Disposal (Tons)	State Population	Per Capita Disposal*	Number of Active Landfills	Number of Inactive Landfills**	Remaining Capacity (Cubic Yards)	Remaining Capacity (Tons)	Remaining Capacity (Years)
1988	18,114,295	16,668,639	5.95	750	84	1,162,374,628	377,771,754	21
1989	18,531,001	16,806,521	6.04	616	83	1,111,902,033	361,368,161	20
1990	19,969,615	16,986,510	6.44	493	142	1,124,524,795	393,583,678	20
1991	19,973,622	17,349,000	6.31	405	135	1,183,699,041	414,294,664	21
1992	21,675,661	17,655,650	6.73	345	77	1,193,233,770	440,730,048	20
1993	21,517,063	18,031,484	6.54	289	62	1,205,635,627	456,161,796	21
1994	21,808,274	18,378,185	6.50	199	58	1,269,565,453	483,752,986	22
1995	21,639,678	18,723,991	6.33	191	39	1,071,520,039	523,633,365	24
1996	21,738,137	19,128,261	6.23	186	35	1,023,799,597	554,095,949	26
1997	22,094,777	19,439,337	6.23	181	37	1,169,628,669	659,694,441	30
1998	23,259,425	19,759,614	6.45	184	29	1,300,609,247	716,302,147	31
1999	25,791,066	20,044,141	7.05	179	34	1,557,349,331	862,778,821	33
2000	28,034,517	20,851,820	7.37	183	44	1,633,321,824	904,891,939	32
2001	27,938,751	21,235,018	7.18	186	42	1,710,713,869	939,383,633	34
2002	29,061,966	21,779,893	7.31	190	40	1,691,970,227	971,314,962	33
2003	29,073,315	22,118,509	7.20	184	39	1,506,807,849	963,972,887	33
2004	29,581,785	22,490,022	7.21	189	34	1,826,587,075	1,134,462,509	37
2005	29,671,151	22,859,968	7.11	186	32	1,870,868,394	1,217,845,562	41
2006	30,453,702	23,507,783	7.10	187	28	2,110,807,960	1,366,311,822	45
2007	33,183,488	23,904,380	7.61	188	28	2,158,501,232	1,403,592,411	42
2008	33,078,196	24,326,974	7.45	191	35	2,167,272,920	1,439,621,096	44
2009	32,264,262	24,782,302	7.13	190	20	2,351,154,567	1,567,806,257	49
2010	28,637,988	25,213,445	6.22	190	18	2,483,194,375	1,722,333,910	60
2011	28,817,066	25,674,681	6.15	193	32	2,636,321,089	1,830,882,782	64
2012	30,309,069	26,059,203	6.37	195	42	2,632,196,651	1,739,952,891	57

*Using the Texas definition of MSW described on page 1 of this report

**Number of inactive facilities that submitted annual reports, excluding landfills reporting Post-Closure status.

Facility Data for MSW Landfills

Active landfills, organized by COG Region and Landfill Type
All values rounded to the nearest whole number

Key:

Type – Facility types are identified by Arabic numbers with applicable abbreviations (e.g., 1AE) in the agency database

2012 Tons – Total Tons Landfilled in Fiscal Year 2012

Rem Yds – Remaining Landfill Capacity in Cubic Yards

Rate – Reported Compaction Rate at the Landfill in Pounds per Cubic Yards

Rem Tons – Remaining Landfill Capacity in Equivalent Tons (based on reported landfill compaction rate)

Rem Yrs – Remaining Landfill Capacity in Years (based on operator estimate where appropriate or on permit volumes and compacted waste acceptance rates)

NA – Not applicable

PANHANDLE REGIONAL PLANNING COMMISSION

COG	Permit	Site Name	County	Type	2012 Tons	RemYds	Rate	RemTons	RemYrs
1	73A	City of Amarillo Landfill	Potter	1	220,428	71,264,937	800	28,505,975	100
1	211B	City of Dumas Landfill	Moore	1	7,796	27,267	800	10,907	1
1	215A	City of Hereford Landfill	Deaf Smith	4AE	5,318	312,552	850	132,835	35
1	414	Armstrong County Landfill	Armstrong	4AE	2,148	249,197	500	62,299	29
1	445A	City of Dimmitt Landfill	Castro	1AE	4,649	1,215,211	750	455,704	98
1	570	City of McLean Landfill	Gray	1AE	830	552,562	800	221,025	13
1	589A	City of Pampa Landfill	Gray	4AE	2,889	461,828	1000	230,914	80
1	791	Cal Farley's Boys Ranch	Oldham	4AE	500	137,700	400	27,540	49
1	876A	City of Perryton Landfill	Ochiltree	1AE	6,251	1,389,380	890	618,274	95
1	955	City of Wellington Landfill	Collingsworth	1AE	4,906	517,621	800	207,049	42
1	1009A	City of Tulia MSW Landfill	Swisher	1AE&4AE	5,620	799,632	850	339,844	60
1	1038A	City of Dalhart Municipal Landfill	Dallam	1AE	9,215	1,349,960	785	529,859	33
1	1164	City of Panhandle MSW Landfill	Carson	1AE	2,601	736,706	750	276,265	106
1	1663B	Southwest Landfill	Randall	1	182,506	3,775,875	1613	3,045,243	17
1	1943	City of Booker Landfill	Lipscomb	1AE	1,718	457,392	850	194,392	10
1	2238	City of Pampa Landfill	Gray	1	54,289	8,908,944	1320	5,879,903	108
1	2263	City of Childress Landfill	Childress	1AE&4AE	4,056	2,420,936	800	968,374	123
1	2266	City of Memphis	Hall	1AE	6,572	1,007,212	800	402,885	61
1	2279	City of Dumas Landfill	Moore	1	4,907	8,271,624	1000	4,135,812	118

COG	Permit	Site Name	County	Type	2012 Tons	RemYds	Rate	RemTons	RemYrs
1	2281	City of Shamrock	Wheeler	1AE	5,747	325,483	800	130,193	28
1	2285	City of Dumas Landfill	Moore	4AE	5,034	274,491	800	109,796	5
1	2352	City of Spearman MSW Landfill	Hansford	1AE	2,941	1,060,223	850	450,595	160

SOUTH PLAINS ASSOCIATION OF GOVERNMENTS

COG	Permit	Site Name	County	Type	2012 Tons	RemYds	Rate	RemTons	RemYrs
2	69	Caliche Canyon Landfill	Lubbock	1	23,823	753,583	560	211,003	9
2	363A	City of Amherst Landfill	Lamb	4AE	4	3,948	400	790	5
2	549A	City of Matador Landfill	Motley	1AE	3,286	504,619	800	201,848	73
2	564	City of Muleshoe Landfill	Bailey	4AE	2,005	176,103	800	70,441	35
2	583A	City of Olton Landfill	Lamb	1AE	11,149	919,059	666	306,047	30
2	1298	City of Littlefield Landfill	Lamb	4AE	6,629	318,571	1400	223,000	30
2	1733	City of Sundown Landfill	Hockley	4AE	555	229,804	850	97,667	175
2	2157	City of Plainview	Hale	1	25,747	10,215,598	633	3,233,237	125
2	2170	Brownfield MSW Landfill	Terry	1	12,517	4,469,778	711	1,589,006	127
2	2207	City of Floydada Landfill	Floyd	1AE&4AE	7,286	889,704	830	369,227	72
2	2217	Yoakum County Landfill	Yoakum	1AE&4AE	10,555	1,996,092	800	798,437	76
2	2227	City of Post Landfill	Garza	1AE&4AE	4,560	202,842	650	65,924	15
2	2252	West Texas Regional Disposal Facility	Lubbock	1	271,466	107,813,766	1159	62,478,077	230
2	2268	City of Morton Landfill	Cochran	4AE	117	806,928	400	161,386	120
2	2274	City of Littlefield Landfill	Lamb	1AE	7,300	1,317,215	1400	922,051	100
2	2291	City of Muleshoe Landfill	Bailey	1AE	7,101	505,676	800	202,270	28
2	2293	City of Meadow Landfill	Terry	1AE	12,745	809,322	800	323,729	27
2	2323	C&D Waste	Lubbock	4	4,179	3,618,045	666	1,204,809	29
2	2328A	Tahoka MSW Landfill	Lynn	1AE	10,707	962,795	850	409,188	56

NORTEX REGIONAL PLANNING COMMISSION

COG	Permit	Site Name	County	Type	2012 Tons	RemYds	Rate	RemTons	RemYrs
3	1428A	City of Wichita Falls Landfill	Wichita	1	116,961	72,261,775	1040	37,576,123	321
3	1571A	IESI Buffalo Creek Landfill	Wichita	1	163,906	29,684,011	1240	18,404,087	112
3	9003	City of Quanah Monofill	Hardeman	Monofill	2,703	10,185	NA	3,157	NA

NORTH CENTRAL TEXAS COUNCIL OF GOVERNMENTS

COG	Permit	Site Name	County	Type	2012 Tons	RemYds	Rate	RemTons	RemYrs
4	42C	Skyline Landfill	Ellis	1	1,056,230	32,668,800	1450	23,684,880	24
4	47A	IESI Weatherford Landfill	Parker	1	174,782	2,678,802	1400	1,875,161	11
4	62	McCommas Bluff Landfill	Dallas	1	1,419,508	96,866,556	1400	67,806,589	48
4	218C	Southeast Landfill	Tarrant	1	499,311	27,323,533	1523	20,806,870	42
4	358A	Arlington Landfill	Tarrant	1	811,062	11,936,667	1860	11,101,100	14
4	534	City of Cleburne Landfill	Johnson	1	544	25,887	1000	12,944	24
4	664	Stephenville Municipal Landfill	Erath	4	2,518	967,631	850	411,243	82
4	996C	City of Grand Prairie Landfill	Dallas	1	164,031	12,986,398	1800	11,687,758	50
4	1025B	DFW Landfill	Denton	1	1,181,857	14,596,300	1690	12,333,874	10
4	1195A	Republic Maloy Landfill	Hunt	1	96,622	6,327,690	1560	4,935,598	51
4	1209B	CSC Disposal and Landfill	Ellis	1	11,344	31,118,664	1236	19,231,334	1695
4	1312A	Camelot Landfill	Denton	1	334,866	7,160,353	1927	6,899,000	21
4	1394B	Hunter Ferrell Landfill	Dallas	1	164,693	14,287,752	1506	10,758,677	65
4	1417B	Turkey Creek Landfill	Johnson	1	437,480	10,773,262	1460	7,864,481	18
4	1590A	City of Denton Landfill	Denton	1	166,022	11,594,799	1106	6,411,924	39
4	1745B	ECD Landfill	Ellis	1	60,451	39,950,343	1627	32,499,604	538
4	1749B	Lewisville Landfill	Denton	4	157,267	22,267,885	2028	22,579,635	116
4	1895A	City of Garland Charles M Hinton Jr Landfill	Dallas	1	358,201	35,603,185	1015	18,068,616	51
4	1983B	IESI Fort Worth C&D Landfill	Tarrant	4	358,922	4,990,963	1560	3,892,951	11
4	2190	Corsicana Regional Landfill	Navarro	1	106,226	24,134,518	1000	12,067,259	115
4	2294	121 Regional Disposal Facility	Collin	1	723,856	124,318,523	1232	76,580,210	106

ARK-TEX COUNCIL OF GOVERNMENTS

COG	Permit	Site Name	County	Type	2012 Tons	RemYds	Rate	RemTons	RemYrs
5	576B	New Boston Landfill	Bowie	1	131,991	1,492,300	1100	820,765	6
5	797B	Pleasant Oaks Landfill	Titus	1	77,294	20,078,500	1415	14,205,539	184
5	1454B	Paris Landfill	Lamar	1	48,425	16,929,600	1230	10,411,704	177
5	1898	Lone Star AAP Area A Landfill	Bowie	1	17	2,034,938	850	864,849	39315*
5	2358	Blossom Prairie Landfill	Lamar	1	115,209	77,286,347	1000	38,643,174	335

EAST TEXAS COUNCIL OF GOVERNMENTS

COG	Permit	Site Name	County	Type	2012 Tons	RemYds	Rate	RemTons	RemYrs
6	1240B	IESI East Texas Regional Landfill	Rusk	1	126,673	10,323,452	1400	7,226,416	57
6	1327B	Pinehill Landfill	Gregg	1	189,204	16,390,627	1907	15,628,463	83
6	1614A	Royal Oaks Landfill	Cherokee	1	67,313	2,686,209	1918	2,576,074	38
6	1972A	Greenwood Farms Landfill	Smith	1	207,402	106,444,520	1833	97,556,403	470

WEST CENTRAL TEXAS COUNCIL OF GOVERNMENTS

COG	Permit	Site Name	County	Type	2012 Tons	RemYds	Rate	RemTons	RemYrs
7	50B	Sweetwater Landfill	Nolan	4AE	2,464	238,721	400	47,744	7
7	420A	Colorado City MSW Facility	Mitchell	1AE&4AE	2,080	270,096	700	94,534	17
7	1302	Coleman Landfill	Coleman	4AE	22	13,447	500	3,362	152
7	1463B	City of Snyder Landfill	Scurry	1	36,306	10,810,667	1000	5,405,334	149
7	1469A	Abilene Regional Landfill	Jones	1	173,488	89,906,570	1360	61,136,468	352
7	1562A	Brownwood Regional MSW Disposal Facility	Brown	1	61,412	18,314,962	1100	10,073,229	112
7	1604B	Haskell Municipal Landfill	Haskell	1AE	8,164	848,674	700	297,036	12
7	2325A	Abilene Environmental Landfill	Jones	1	83,629	19,619,500	1600	15,695,600	65

RIO GRANDE COUNCIL OF GOVERNMENTS

COG	Permit	Site Name	County	Type	2012 Tons	RemYds	Rate	RemTons	RemYrs
8	495	Hudspeth County Dell City Landfill	Hudspeth	1AE&4AE	1,484	205,946	850	87,527	25
8	729A	McCombs Landfill	El Paso	1	4	16,384,441	1155	9,462,015	12
8	957A	Hudspeth County Sierra Blanca Landfill	Hudspeth	1AE&4AE	4,160	1,315,877	850	559,248	69
8	1276	Big Bend National Park Landfill	Brewster	1AE	377	101,722	750	38,146	16
8	1422	Fort Bliss MSW Landfill	El Paso	1	5,523	66,208	963	31,879	5
8	1737A	City of Presidio Landfill	Presidio	1AE	5,727	739,346	400	147,869	35
8	2197	City of Alpine Landfill	Brewster	1AE	13,341	3,403,227	329	559,831	44
8	2284	Clint Municipal Landfill	El Paso	1	428,820	21,067,011	1155	12,166,199	22

PERMIAN BASIN REGIONAL PLANNING COMMISSION

COG	Permit	Site Name	County	Type	2012 Tons	RemYds	Rate	RemTons	RemYrs
9	39	City of Seminole Landfill	Gaines	1AE&4AE	14,048	1,748,036	600	524,411	55
9	171	City of Andrews Landfill	Andrews	1AE&4AE	13,733	1,047,309	850	445,106	39
9	288A	City of Big Spring	Howard	1	38,385	682,491	1113	379,806	10

COG	Permit	Site Name	County	Type	2012 Tons	RemYds	Rate	RemTons	RemYrs
9	427	City of Crane	Crane	1AE&4AE	3,996	380,319	700	133,112	33
9	517A	Lamesa Landfill	Dawson	1	14,381	1,551,232	1132	877,997	61
9	566	City of McCamey Landfill	Upton	4AE	1,544	1,246,280	750	467,355	7
9	673	Terrell County Landfill	Terrell	4AE	269	28,024	300	4,204	69
9	691	Upton County Landfill	Upton	4AE	67	94,882	400	18,976	282
9	772	Monahans Landfill	Ward	1AE	11,863	1,073,936	650	349,029	30
9	976	City of Fort Stockton Landfill	Pecos	1AE&4AE	12,111	319,563	675	107,853	9
9	1605B	City of Midland Landfill	Midland	1	194,085	34,218,410	1251	21,403,615	110
9	2120	City of Pecos Landfill	Reeves	1AE&4AE	13,335	880,160	850	374,068	26
9	2154	Glasscock County Landfill	Glasscock	1AE	514	72,733	250	9,092	17
9	2158	Charter Waste Landfill	Ector	1	309,629	33,791,243	1565	26,441,648	85
9	2189	City of Stanton Landfill	Martin	1AE	3,937	573,363	1000	286,681	36

CONCHO VALLEY COUNCIL OF GOVERNMENTS

COG	Permit	Site Name	County	Type	2012 Tons	RemYds	Rate	RemTons	RemYrs
10	26	City of Junction	Kimble	4AE	1,850	236,758	1000	118,379	3
10	79	San Angelo Landfill	Tom Green	1	171,508	5,399,848	826	2,230,137	13
10	86B	Big Lake Landfill	Reagan	1AE	3,966	70,935	500	17,734	88
10	195	Mason Landfill	Mason	1AE	2,068	88,684	1000	44,342	15
10	349	City of Eldorado Landfill	Schleicher	4AE	147	615	1500	461	3
10	614	Robert Lee Landfill	Coke	4AE	11	24,436	850	10,385	1
10	1270	Barnhart Landfill	Irion	1AE	1,516	58,166	350	10,179	5
10	1404	City of Menard Landfill	Menard	4AE	39	12,329	850	5,240	49
10	1732	City of Brady Landfill	McCulloch	1AE&4AE	10,600	2,444,841	900	1,100,179	70
10	2264	City of Eldorado Landfill	Schleicher	1AE	7,621	1,381,460	1500	1,036,095	136

HEART OF TEXAS COUNCIL OF GOVERNMENTS

COG	Permit	Site Name	County	Type	2012 Tons	RemYds	Rate	RemTons	RemYrs
11	241D	Itasca Landfill	Hill	1	291,734	49,623,184	1886	46,794,663	160
11	948A	City of Waco Landfill	McLennan	1	250,591	6,567,452	985	3,234,470	13
11	1558A	Mexia Landfill	Limestone	1	34,638	7,910,030	1446	5,718,952	165
11	1646A	Lacy Lakeview Recycling & Disp Fac	McLennan	1	110,388	1,489,562	1350	1,005,454	8

CAPTIAL AREA COUNCIL OF GOVERNMENTS

COG	Permit	Site Name	County	Type	2012 Tons	RemYds	Rate	RemTons	RemYrs
12	249D	Austin Community Recycling & Disp Fac	Travis	1	318,721	14,012,403	1160	8,127,194	19
12	1405B	Williamson County Recycling & Disp Fac	Williamson	1	249,158	61,684,921	1316	40,588,678	120
12	1447A	BFI Sunset Farms Landfill	Travis	1	600,393	8,538,930	1350	5,763,778	4
12	1841	IESI Travis County C&D Landfill	Travis	4	139,861	2,647,569	1300	1,720,920	12
12	2123	Texas Disposal Systems Landfill	Travis	1	641,120	25,926,024	1360	17,629,696	28

BRAZOS VALLEY COUNCIL OF GOVERNMENTS

COG	Permit	Site Name	County	Type	2012 Tons	RemYds	Rate	RemTons	RemYrs
13	2292	Twin Oaks Landfill	Grimes	1	274,167	36,504,247	1123	20,497,135	68

DEEP EAST TEXAS REGIONAL PLANNING COMMISSION

COG	Permit	Site Name	County	Type	2012 Tons	RemYds	Rate	RemTons	RemYrs
14	720	City of Nacogdoches Landfill	Nacogdoches	1	68,730	3,401,407	1166	1,983,020	26
14	1384A	Polk County Landfill	Polk	1	105,625	8,635,054	1418	6,122,253	58
14	2105A	Angelina County Waste Mgmt Center	Angelina	1	100,762	4,212,063	1200	2,527,238	19
14	2242A	Newton County Landfill	Newton	1	214,712	43,612,368	1500	32,709,276	80

SOUTHEAST TEXAS REGIONAL PLANNING COMMISSION

COG	Permit	Site Name	County	Type	2012 Tons	RemYds	Rate	RemTons	RemYrs
15	1486B	City of Beaumont MSW Landfill	Jefferson	1	209,175	19,703,576	1177	11,595,554	55
15	1815A	City of Port Arthur Landfill	Jefferson	1	152,605	16,780,666	1000	8,390,333	37
15	2027	BFI Golden Triangle Landfill	Jefferson	1	249,700	9,282,168	2202	10,219,667	38
15	2214A	IESI Hardin County Landfill	Hardin	1	50,746	1,319,586	1300	857,731	17

HOUSTON-GALVESTON AREA COUNCIL

COG	Permit	Site Name	County	Type	2012 Tons	RemYds	Rate	RemTons	RemYrs
16	203A	Altair Landfill	Colorado	1	34,617	869,571	1200	521,743	15
16	261B	McCarty Road Landfill	Harris	1	2,331,300	28,418,461	1747	24,823,526	14
16	1149A	Galveston County Landfill	Galveston	1	345,194	5,802,034	1583	4,592,310	19
16	1193	Whispering Pines Landfill	Harris	1	19	10,902,390	2000	10,902,390	10
16	1301	Addicks - Fairbanks Landfill	Harris	4	54,599	839,586	1180	495,356	9

COG	Permit	Site Name	County	Type	2012 Tons	RemYds	Rate	RemTons	RemYrs
16	1307D	Atascocita Landfill	Harris	1	1,131,662	45,327,023	1560	35,355,078	31
16	1403	Casco Landfill	Harris	4	28,121	1,970,196	900	886,588	32
16	1502	Chambers County Landfill	Chambers	1	29,770	283,241	1200	169,945	3
16	1505A	Blue Ridge Landfill	Fort Bend	1	613,155	149,488,246	1400	104,641,772	180
16	1535B	Baytown Landfill	Chambers	1	239,514	10,866,720	1460	7,932,706	33
16	1539A	Seabreeze Environmental Landfill	Brazoria	1	673,241	26,350,597	1507	19,855,175	31
16	1540A	Greenshadow Landfill	Harris	4	104,670	3,089,809	1600	2,471,847	24
16	1565A	Fairbanks Landfill	Harris	4	16	68,160	1500	51,120	5
16	1586A	Greenbelt Landfill	Harris	4	100,937	3,894,852	1200	2,336,911	18
16	1599A	Greenhouse Road Landfill	Harris	4	144,986	6,621,139	1750	5,793,497	49
16	1708	Dixie Farm Road Landfill	Brazoria	4	36,794	2,352,705	880	1,035,190	30
16	1721A	Coastal Plains Landfill	Galveston	1	418,640	14,435,575	1520	10,971,037	29
16	1752B	Security Landfill	Montgomery	1	364,981	15,209,470	1420	10,798,724	29
16	1797A	Sprint Fort Bend County Landfill	Fort Bend	4	264,340	17,200,067	1140	9,804,038	39
16	1849B	North County Landfill	Galveston	4	39	3,689,529	2130	3,929,348	50
16	1921A	Cougar Landfill	Harris	4	60,210	284,890	1360	193,725	3
16	2185	Hawthorn Park Landfill	Harris	4	308,944	1,517,931	1480	1,123,269	4
16	2240A	Ralston Road Landfill	Harris	4	56,991	1,174,293	1200	704,576	12
16	2270	Fort Bend Regional Landfill	Fort Bend	1	687,736	41,711,371	1500	31,283,528	45
16	2304	Tall Pines Landfill	Harris	4	190,361	3,990,219	1200	2,394,131	12
16	2344	Lone Star Recycling and Disposal Facility	Harris	4	155,712	13,696,924	1000	6,848,462	34

GOLDEN CRESCENT REGIONAL PLANNING COMMISSION

COG	Permit	Site Name	County	Type	2012 Tons	RemYds	Rate	RemTons	RemYrs
17	1522A	City of Victoria Landfill	Victoria	1	136,156	6,817,809	1225	4,175,908	30

ALAMO AREA COUNCIL OF GOVERNMENTS

COG	Permit	Site Name	County	Type	2012 Tons	RemYds	Rate	RemTons	RemYrs
18	66B	Mesquite Creek Landfill	Comal	1	303,762	13,395,804	1680	11,252,475	27
18	1410C	Tessman Road Landfill	Bexar	1	887,507	76,637,005	1400	53,645,904	65
18	1506A	City of Kerrville Landfill	Kerr	1	8,017	729,487	1000	364,744	50
18	1848	Beck Landfill	Guadalupe	4	195,418	6,876,578	1300	4,469,776	20
18	1995	City of Fredericksburg Landfill	Gillespie	1	24,499	1,884,219	1180	1,111,689	45
18	2093B	Covel Gardens Landfill	Bexar	1	1,281,988	111,123,853	1373	76,286,525	88

SOUTH TEXAS DEVELOPMENT COUNCIL

COG	Permit	Site Name	County	Type	2012 Tons	RemYds	Rate	RemTons	RemYrs
19	783A	San Ygnacio Landfill	Zapata	1AE&4AE	2,503	315,487	1000	157,744	30
19	954	City of Roma Landfill	Starr	1AE	4,137	72,868	850	30,969	7
19	1693A	City of Laredo Sanitary Landfill	Webb	1	334,502	5,558,913	1296	3,602,176	11

COASTAL BEND COUNCIL OF GOVERNMENTS

COG	Permit	Site Name	County	Type	2012 Tons	RemYds	Rate	RemTons	RemYrs
20	235B	City of Kingsville Landfill	Kleberg	1	31,461	3,420,276	827	1,414,284	48
20	262C	City of Alice Landfill	Jim Wells	1	40,495	1,071,544	1200	642,926	16
20	379	Brooks County Landfill	Brooks	4AE	253	299,962	400	59,992	29
20	571	McMullen County Landfill	McMullen	1AE	500	14,001	750	5,250	11
20	1481	Duval County Landfill	Duval	4AE	7,317	48,509	800	19,404	5
20	2267	El Centro Landfill	Nueces	1	174,000	15,331,131	1300	9,965,235	57
20	2269	Cefe Valenzuela Landfill	Nueces	1	443,424	126,846,143	1175	74,522,109	96
20	2349	Gulley Hurst	Nueces	4	7,013	11,835,637	654	3,870,253	50

LOWER RIO GRANDE VALLEY DEVELOPMENT COUNCIL

COG	Permit	Site Name	County	Type	2012 Tons	RemYds	Rate	RemTons	RemYrs
21	956B	Edinburg Regional Sanitary Landfill	Hidalgo	1	402,228	8,239,046	1200	4,943,428	11
21	1273A	Brownsville MSW Landfill	Cameron	1	256,164	29,551,576	1161	17,154,690	40
21	1727A	Precinct 3 - Penitas Landfill	Hidalgo	1AE	4,309	94,518	1000	47,259	5
21	1948A	BFI-Rio Grande Valley Landfill	Hidalgo	1	369,980	500,779	1385	346,789	1
21	2302	Edinburg Regional Type IV Landfill	Hidalgo	4	100,046	10,948,299	940	5,145,701	35

TEXOMA COUNCIL OF GOVERNMENTS

COG	Permit	Site Name	County	Type	2012 Tons	RemYds	Rate	RemTons	RemYrs
22	523B	Hillside Landfill	Grayson	1	62,523	11,863,400	1025	6,079,993	98
22	2290	TASWA Disposal and Recycling Facility	Grayson	1	123,973	23,945,091	900	10,775,291	87

CENTRAL TEXAS COUNCIL OF GOVERNMENTS

COG	Permit	Site Name	County	Type	2012 Tons	RemYds	Rate	RemTons	RemYrs
23	692A	Temple Recycling & Disposal Facility	Bell	1	356,652	9,571,584	1320	6,317,245	15
23	1866	Fort Hood Landfill	Coryell	1	22,851	2,966,088	1100	1,631,348	34

MIDDLE RIO GRANDE VALLEY DEVELOPMENT COUNCIL

COG	Permit	Site Name	County	Type	2012 Tons	RemYds	Rate	RemTons	RemYrs
24	207A	City of Del Rio Municipal Landfill	Val Verde	1	43,446	1,795,869	700	628,554	14
24	630	City of Sabinal Landfill	Uvalde	4AE	6	3,630	400	726	8
24	1308A	Crystal City MSW Facility	Zavala	1AE	4,476	1,467,108	850	623,521	140
24	1725	City of Uvalde Landfill	Uvalde	1	23,211	699,789	1000	349,895	15
24	1918	City of Eagle Pass Type IV Landfill	Maverick	4AE	3,791	1,158,413	750	434,405	26
24	2225	City of Carrizo Springs Landfill	Dimmit	1AE	5,968	1,672,897	600	501,869	60
24	2303	Zavala County MSWF Landfill	Zavala	1AE	3,538	190,681	550	52,437	29
24	2316	Maverick County El Indio MSW Landfill	Maverick	1	48,657	11,910,518	1058	6,300,664	80
24	2354	Fort Clark Springs Landfill	Kinney	1AE	1,157	468,305	800	187,322	149

Facility Data for MSW Processing Facilities

Active facilities, organized by COG Region and Type

Key:

Type - Facility sub-types are identified by Arabic numbers with applicable abbreviations (e.g., 5TS) in the agency database

Type 5AC - Medical waste autoclave facility

Type 5GG - Liquid waste (i.e., grease trap waste, grit trap waste, sludge, septage) processing facility

Type 5MW -Medical waste processor

Type 5RC - Mixed waste composting facility

Type 5RR - Materials recovery facility (MRF)

Type 5TL – Liquid Transfer Station

Type 5TS - Transfer station

Type 5WI - Incinerator (no electrical power generation)

2012 Tons - Total tons handled in fiscal year 2012 in terms of major permitted activity (e.g., for a transfer station, total tons transferred; for an incinerator, total tons incinerated). For a liquid waste processing facility, waste is reported in gallons but converted here to approximate tons equivalent.

PANHANDLE REGIONAL PLANNING COMMISSION

COG	Permit/Registration	Site Name	County	Type	2012 Tons
1	76A	City of Amarillo Transfer Station	Potter	5TS	155,307
1	40015	City of Borger Transfer Station	Hutchinson	5TS	16,343
1	40026	City of Canadian Transfer Station	Hemphill	5TS	6,727
1	40031	City of Cactus Transfer Station	Moore	5TS	2,243
1	40109	Stratford Transfer Station	Sherman	5TS	2,888
1	40192	City of Clarendon	Donley	5TS	1,498
1	43030	City of Pampa Liquid Waste Processing Facility	Gray	5GG	661

SOUTH PLAINS ASSOCIATION OF GOVERNMENTS

COG	Permit/Registration	Site Name	County	Type	2012 Tons
2	2231	South Plains Disposal	Lubbock	5GG	7,098
2	40051	City of Levelland Transfer Station	Hockley	5TS	9,000
2	40084	Stericycle Lubbock Facility	Lubbock	5TS	2,109
2	40176	Caliche Canyon Transfer Station	Lubbock	5TS	399

NORTEX REGIONAL PLANNING COMMISSION

COG	Permit/Registration	Site Name	County	Type	2012 Tons
3	1429	City of Wichita Falls Transfer Station	Wichita	5TS	68,913
3	2229	IMC Waste Disposal	Wichita	5GG	17,242
3	2295	IESI Bowie Transfer Station	Montague	5TS	42,114
3	40059	City of Vernon Transfer Station	Wilbarger	5TS	17,286
3	40144	City of Seymour Transfer Station	Baylor	5TS	415

NORTH CENTRAL TEXAS COUNCIL OF GOVERNMENTS

COG	Permit/Registration	Site Name	County	Type	2012 Tons
4	12	City of Garland Transfer Station	Dallas	5TS	108,349
4	53	Lookout Drive Transfer Station	Collin	5TS	120,436
4	60	Fair Oaks Transfer Station	Dallas	5TS	54,752
4	227	City of University Park Transfer Station	Dallas	5TS	12,403
4	1145	Harry Hines Transfer Station	Dallas	5TS	163,681
4	1225D	Cold Springs Processing & Disposal	Tarrant	5GG	82,624
4	1263	City of Mesquite Transfer Station	Dallas	5TS	46,118
4	1421	PSC Recovery Systems LLC	Dallas	5GG	43,531
4	1453	City of Dallas Transfer Station	Dallas	5TS	55,203
4	1494	Parkway Transfer Station	Collin	5TS	115,316
4	2045A	Custer Road Transfer Station	Collin	5TS	226,980
4	2256	Southwaste Disposal Dallas Facility	Tarrant	5GG	85,516
4	2275	Fort Worth Transfer Station Material Recovery Facility	Tarrant	5TS	0
4	2306	IESI Minnis Drive Transfer Station	Tarrant	5TS	3,288
4	40052	Southwest Paper Stock Inc	Tarrant	5TS	10,408
4	40080	Harrington Environmental Liquid Transfer Station	Johnson	5TL	3,556
4	40168	Cleburne Transfer Station	Johnson	5TS	47,311
4	40181	Somervell County Transfer Station	Somervell	5TS	2,719
4	40186	Westside Transfer Station	Tarrant	5TS	139,807
4	40196	Community Waste Disposal Transfer Station	Dallas	5TS	61,604
4	40229	Huckabay Ridge Liquid Waste Facility	Erath	5TL	24,574
4	40241	Oncore Technology	Tarrant	5MW	353
4	40253	Stericycle Garland Facility	Dallas	5AC	12,771

ARK-TEX COUNCIL OF GOVERNMENTS (COG 5) – NO DATA AVAILABLE

EAST TEXAS COUNCIL OF GOVERNMENTS

COG	Permit/Registration	Site Name	County	Type	2012 Tons
6	356	Vital Earth Resources	Upshur	5RC	1,803
6	1741A	Sharps Enviromental Services, Inc.	Panola	5WI	807
6	2365	Edwards Construction	Gregg	5GG	4,200
6	40005	Beto Transfer Station Facility	Anderson	5TS	1,038
6	40006	Coffield Transfer Station Facility	Anderson	5TS	1,450
6	40040	IESI Palestine Transfer Station	Anderson	5TS	30,996
6	40102	Upper Sabine Valley Solid Waste Municipal District Transfer Station	Wood	5TS	13,811
6	40172	City of Carthage Transfer Station	Panola	5TS	12,170
6	40174	Pittsburgh Transfer Station	Camp	5TS	17,116

WEST CENTRAL TEXAS COUNCIL OF GOVERNMENTS (COG 7) – NO DATA AVAILABLE

RIO GRANDE COUNCIL OF GOVERNMENTS

COG	Permit/Registration	Site Name	County	Type	2012 Tons
8	2355	Liquid Environmental Solutions of TX El Paso Facility	El Paso	5GG	13,786
8	40094	Stericycle El Paso Facility	El Paso	5TS	1,585
8	40237	El Paso C&D Recycling Plant	El Paso	5RR	13,724
8	42038	Fort Bliss Bio Cell Facility	El Paso	5RC	52

PERMIAN BASIN REGIONAL PLANNING COMMISSION

COG	Permit/Registration	Site Name	County	Type	2012 Tons
9	43028	City of Stockton Liquid Waste Processing Facility	Pecos	5GG	343

CONCHO VALLEY COUNCIL OF GOVERNMENTS

COG	Permit/Registration	Site Name	County	Type	2012 Tons
10	2357	San Angelo Pro Pump Dewatering & Compost Facility	Tom Green	5GG	3,429
10	2359	D's Recycling Facility	Tom Green	5RC	6,953
10	42022	Kickapoo Composting Facility	Tom Green	5RC	2,167

HEART OF TEXAS COUNCIL OF GOVERNMENTS (COG 11) – NO DATA AVAILABLE

CAPTIAL AREA COUNCIL OF GOVERNMENTS

COG	Permit/Registration	Site Name	County	Type	2012 Tons
12	119	Eco Depot	Travis	5TS	8,763
12	466A	Georgetown Transfer Station	Williamson	5TS	52,527
12	1787	Hays County Transfer Station	Hays	5TS	1,355
12	2250	Liquid Environmental Solutions of TX Austin Facility	Travis	5GG	44,193
12	2260A	Stericycle Austin Autoclave	Bastrop	5AC	9,449
12	2300	IESI Blanco County Transfer Station	Blanco	5TS	20,089
12	40035	BFI Burnet Transfer Station	Burnet	5TS	32,057
12	40212	Tom Dye Contractor	Travis	5TL	189,850
12	42016	Texas Organic Recovery	Travis	5RC	7,962

BRAZOS VALLEY COUNCIL OF GOVERNMENTS

COG	Permit/Registration	Site Name	County	Type	2012 Tons
13	40018	City of Brenham Transfer Station Facility	Washington	5TS	30,006
13	40173	Washington County Transfer Station	Washington	5TS	31,005
13	40245	Terrabon Demonstration Facility	Brazos	5RR	380
13	42003	Bryan Compost Facility	Brazos	5RC	19,784
13	43026	Still Creek Liquid Waste Processing Facility	Brazos	5GG	5,977

DEEP EAST TEXAS REGIONAL PLANNING COMMISSION

COG	Permit/Registration	Site Name	County	Type	2012 Tons
14	40013	City of Woodville Transfer Station Facility	Tyler	5TS	2,548
14	40024	City of San Augustine Transfer Station Facility	San Augustine	5TS	2,582
14	40033	Crockett Transfer Station	Houston	5TS	738
14	40038	Tyler County Transfer Station	Tyler	5TS	3,540
14	40044	City of Jasper Landfill	Jasper	5TS	7,000
14	40054	Don General Services	Sabine	5TS	3,386
14	40106	Newton County Transfer Station	Newton	5TS	1,789
14	40114	City of Crockett Transfer Station	Houston	5TS	5,416
14	40226	Pro Star Waste	Polk	5TS	2,288
14	43007	City of Nacogdoches Grease Treatment Facility	Nacogdoches	5GG	2,392

SOUTHEAST TEXAS REGIONAL PLANNING COMMISSION

COG	Permit/Registration	Site Name	County	Type	2012 Tons
15	40164	JTB Recycling Transfer Station Facility	Jefferson	5TL	420
15	40225	Triangle Waste Solutions	Jefferson	5TS	18,713
15	40231	Biomedical Waste Solutions	Jefferson	5MW	4,734
15	43000	JTB Recycling Transfer Station Facility	Jefferson	5GG	9,569

HOUSTON-GALVESTON AREA COUNCIL

COG	Permit/Registration	Site Name	County	Type	2012 Tons
16	164	Galveston Transfer Station	Galveston	5TS	75,777
16	1355A	Ruffino Hills Transfer Station	Harris	5TS	208,778
16	1471	Sam Houston Recycling Center	Harris	5TS	87,437
16	1483A	Koenig Street Transfer Station	Harris	5TS	102,940
16	1578	Hardy Road Transfer Station	Harris	5TS	279,054
16	2106	City of Weimar Transfer Station	Colorado	5TS	30,692
16	2222	Stericycle Inc Conroe Facility	Montgomery	5AC	12,578
16	2232A	UTMB Galveston Solid Waste Incineration Facility	Galveston	5WI	429
16	2234D	Liquid Environmental Solutions of TX Houston Facility	Harris	5GG	266,522
16	2235	Brazoria County Recycling Center	Brazoria	5RR	2,681
16	2239A	WM Resource Recovery & Recycling Facility	Chambers	5WI	3,901
16	2241A	Southwest Disposal Hurst Facility	Harris	5GG	150,960
16	2298	B R Perrin Plant	Harris	5GG	32,000
16	2318	Don Tol Compost Facility	Wharton	5RC	2,254
16	2326	Stericycle Guhn Rd Processing Facility	Harris	5MW	184
16	2350	Big K Environmental	Harris	5GG	51,773
16	40028	Matagorda County Transfer Station	Matagorda	5TS	9,533
16	40053	Best Septic Tank Cleaning	Fort Bend	5TL	2,119
16	40056	City of Huntsville Transfer Station	Walker	5TS	38,346
16	40079	Stericycle - Fresno	Fort Bend	5TS	2,514
16	40098	BFI Houston Resource Renewal Complex Transfer Station Facility	Harris	5TS	40,012
16	40131	Houston Southeast Transfer Station	Harris	5TS	194,795
16	40132	Houston Southwest Transfer Station	Harris	5TS	311,436
16	40133	Houston Northwest Transfer Station	Harris	5TS	162,483

COG	Permit/Registration	Site Name	County	Type	2012 Tons
16	40189	Egbert Transfer Station	Harris	5TS	50,362
16	40191	Country Waste Inc	Austin	5TS	6,236
16	40211	Sprint Recycling Center - Northeast	Harris	5TS	11,477
16	40217	Tanner Road Facility	Harris	5TS	42,590
16	40236	Excell Disposal Waste Containers	Harris	5TS	12,243
16	42037	New Earth Composting	Montgomery	5RC	27,635

GOLDEN CRESCENT REGIONAL PLANNING COMMISSION

COG	Permit/Registration	Site Name	County	Type	2012 Tons
17	2181	Jackson County MSW Transfer Station & Recycling Center	Jackson	5TS	3,170
17	2330	Victoria Environmental	Victoria	5GG	56,352
17	2366	Victoria Regional WWTP Grit Trap Waste Facility	Victoria	5GG	1,057
17	40011	City of Hallettsville Transfer Station	Lavaca	5TS	931
17	40017	City of Yoakum Transfer Station	Dewitt	5TS	27,089
17	42034	Victoria Compost Facility	Victoria	5RC	22,442

ALAMO AREA COUNCIL OF GOVERNMENTS

COG	Permit/Registration	Site Name	County	Type	2012 Tons
18	1443	City of San Antonio Starcrest Transfer Station	Bexar	5TS	152,627
18	2248	Liquid Environmental Solutions of TX San Antonio Facility	Bexar	5GG	46,874
18	2317	Southwaste Disposal LLC San Antonio Facility	Bexar	5RC	46,362
18	40240	Kerrville Transfer Station	Kerr	5TS	95,210
18	40244	Medsharps LLC Schertz Facility	Comal	5MW	2,464
18	42028	City of Kerrville Composting Facility	Kerr	5RC	7,000
18	42032	New Earth Composting	Bexar	5RC	75,645
18	43011	City of La Coste	Medina	5GG	60,363

SOUTH TEXAS DEVELOPMENT COUNCIL

COG	Permit/Registration	Site Name	County	Type	2012 Tons
19	40238	Starr County Transfer Station	Starr	5TS	6,109

COASTAL BEND COUNCIL OF GOVERNMENTS

COG	Permit/Registration	Site Name	County	Type	2012 Tons
20	2319	Texas Sludge Disposal Composting Facility	San Patricio	5RC	10,237
20	40002	Live Oak County Transfer Station	Live Oak	5TS	600
20	40027	Aransas County Transfer Station	Aransas	5TS	4,725
20	40093	Liquid Environmental Solutions of TX Robstown Facility	Nueces	5TL	994
20	40228	JC Elliott Transfer Station	Nueces	5TS	78,676

LOWER RIO GRANDE VALLEY DEVELOPMENT COUNCIL

COG	Permit/Registration	Site Name	County	Type	2012 Tons
21	748	Pharr Transfer Station	Hidalgo	5TS	27,743
21	2334	Stericycle Harlingen Processing Facility	Cameron	5MW	427
21	2343	Valley De-Watering Services Inc.	Hidalgo	5GG	11,534
21	2346	Liquid Environmental Solutions of TX Weslaco Facility	Hidalgo	5GG	19,885
21	40248	City of Harlingen Transfer Station	Cameron	5TS	62,034
21	42015	City of Brownsville Composting Facility	Cameron	5RC	21,933

TEXOMA COUNCIL OF GOVERNMENTS

COG	Permit/Registration	Site Name	County	Type	2012 Tons
22	1030	City of Gainesville	Cooke	5TS	29,732
22	1136	City of Sherman Transfer	Grayson	5TS	11,323
22	40242	Medical Waste of North Texas	Fannin	5MW	338

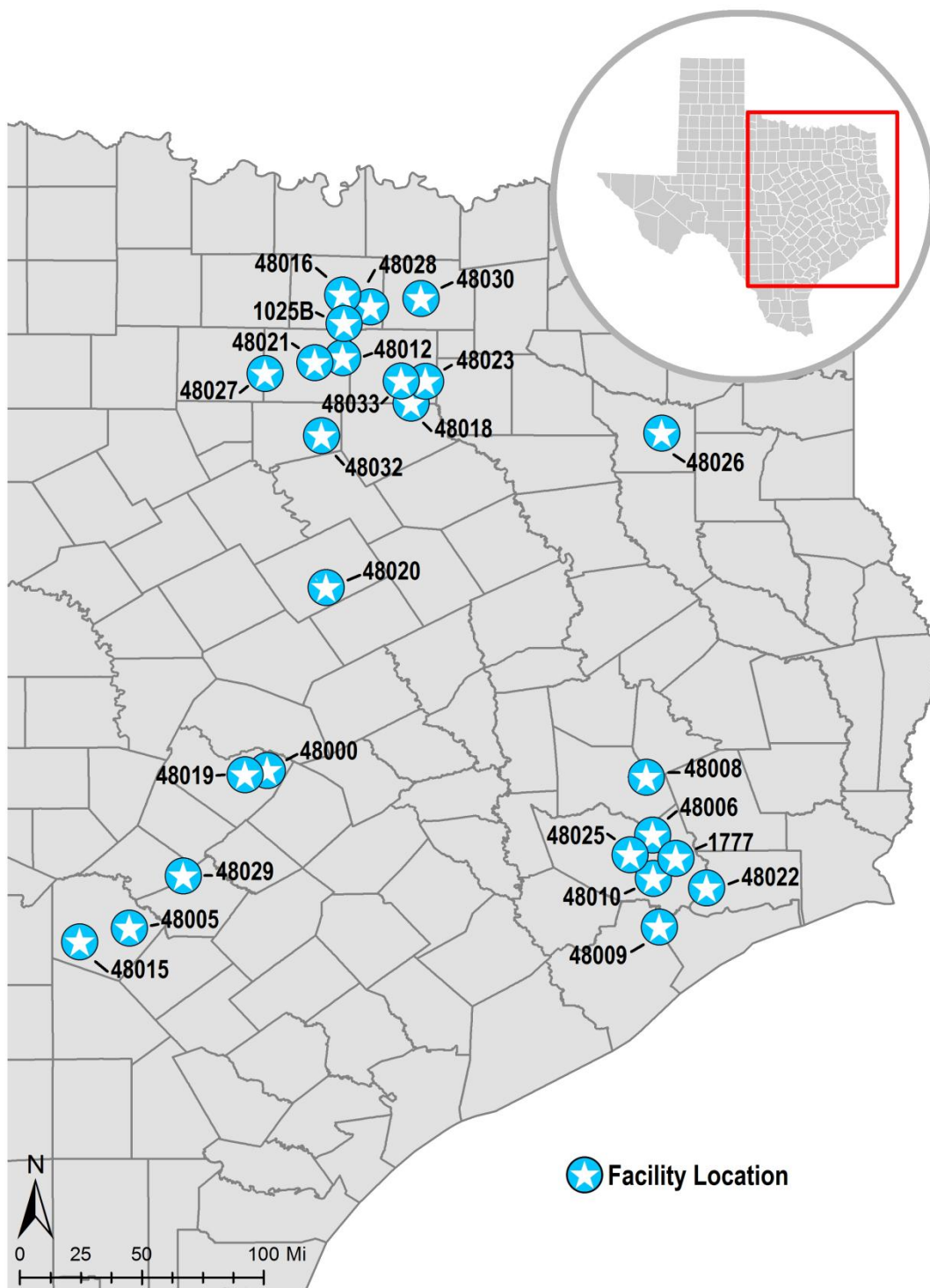
CENTRAL TEXAS COUNCIL OF GOVERNMENTS

COG	Permit/Registration	Site Name	County	Type	2012 Tons
23	2368	S & M Vacuum and Waste, Ltd	Bell	5GG	3,942
23	40004	City of Hico Transfer Station	Hamilton	5TS	57
23	40145	City of Copperas Cove Transfer Station	Coryell	5TS	22,484
23	40160	City of San Saba Transfer Station	San Saba	5TS	3,221
23	40209	Killeen Transfer Station	Bell	5TS	94,909
23	40234	Stericycle Temple Facility	Bell	5TS	539
23	42017	City of Copperas Cove Compost Facility	Coryell	5RC	2,066
23	42035	Bell County WCID 1 Regional Compost Facility	Bell	5RC	6,190

MIDDLE RIO GRANDE DEVELOPMENT COUNCIL

COG	Permit/Registration	Site Name	County	Type	2012 Tons
24	40034	City of Sabinal Transfer Station	Uvalde	5TS	1,156
24	40057	City of Rock Springs Transfer Station	Edwards	5TS	809
24	40178	Fort Clark Springs Transfer Station	Kinney	5TS	68

Facility Data for MSW Facilities Recovering Landfill Gas for Beneficial Use



Active gas recovery facilities (Type 9GR), organized by COG Region and Facility Permit or Registration Number

Key:

LFG – Landfill Gas

LFGTE – Landfill Gas to Energy

Landfill – Permit Number of the landfill from which the LFGTE facility recovers gas

Gas Processed – Estimated Gas Processed at the facility in Fiscal Year 2012

Gas Distributed Offsite – Estimated Gas Distributed Off-site from the facility in Fiscal Year 2012

Power Generated & Used – Estimated Gas Generated and Used On-site by the facility in Fiscal Year 2012

Power Generated & Sold – Estimated Gas Generated and Sold by the facility in Fiscal Year 2012

ft³ – standard cubic feet

kWh – kilowatt hours

COG	Permit/ Registration	Site Name	County	Landfill	Gas Processed (ft ³)	Gas Distributed Off-site (ft ³)	Power Generated & Used (kWh)	Power Generated & Sold (kWh)
4	1025B	DFW Recycling And Disposal Facility	Denton	1025B	1,990,959,000	0	70,940,421	9,478,946
4	48012	Landfill Gas Processing Plant	Tarrant	358A	641,431	641,431	0	0
4	48016	City Of Denton Landfill	Denton	1590A	268,296,040	0	12,890,657	8,358
4	48018	Waste Management Skyline Landfill	Dallas/Ellis	42C	691,429,000	0	27,266,000	2,313,000
4	48021	Fort Worth Methane	Tarrant	464A	215,363,688	0	10,263,208	444,556
4	48023	Trinity Oaks Landfill	Dallas	556	467,571,955	0	18,197,995	1,333,360
4	48027	Westside Landfill Gas To Electric Facility	Tarrant	1019A	649,360,000	0	29,283,773	1,510,355
4	48028	Camelot Landfill Gas To Energy Facility	Denton	1312A	0	0	21,360,723	22,162,381
4	48030	McKinney Landfill	Collin	568A	0	0	24,115,414	25,348,983
4	48032	IESI Turkey Creek Landfill	Johnson	1417B	344,815	182,752	0	0
4	48033	McCommas Bluff LFG Processing Facility	Dallas	62	2,477,908,100	1,462,928,000	0	0
6	48026	Greenwood Farms Landfill	Smith	1972A	592,067	319,716	0	0
11	48020	City Of Waco Landfill	McLennan	948A	490,770,029	490,770,029	0	0
12	48000	Gas Recovery Systems	Travis	1447A	566,302,145	0	22,363,284	2,250,730
12	48019	Austin Community Landfill Power Station	Travis	249D	950,886,000	0	24,385,000	23,069,000
16	1777	McCarty Road Landfill Gas Recovery Facility	Harris	261B	2,564,600,000	1,286,200,000	0	0
16	48006	Atascocita Recycling And Disposal Facility	Harris	1307D	0	0	61,897,801	66,766,000
16	48008	Security Landfill RDF	Montgomery	1752B	0	0	20,108,757	21,740,000

COG	Permit/ Registration	Site Name	County	Landfill	Gas Processed (ft³)	Gas Distributed Off-site (ft³)	Power Generated & Used (kWh)	Power Generated & Sold (kWh)
16	48009	Coastal Plains LFGTE Facility	Galveston	1721A	0	0	30,194,694	32,415,000
16	48010	Blue Bonnet LFGTE Facility	Harris	1279	0	0	5,442,711	5,810,000
16	48022	Baytown LFGTE Facility	Chambers	1535B	0	0	16,723,133	18,083,000
16	48025	Ameresco McCarty Energy	Harris	261B	1,478,300,000	1,478,300,000	0	0
18	48005	Tessman Road Landfill Gas Power Station	Bexar	1410C	1,194,020,800	0	59,072,608	3,770,592
18	48015	Covel Gardens Landfill Gas Power Station	Bexar	2093B	1,341,308,800	0	65,653,536	4,941,664
18	48029	Mesquite Creek Landfill	Comal	66B	333,588,729	0	14,219,805	13,744,296

MSW Waste and Material Type Descriptions

Waste/Material Type	Description
Brush	Cuttings or trimmings from trees, shrubs, or lawns and similar materials.
CESQG	Conditionally exempt small-quantity generator – a person that generates no more than 220 pounds of hazardous waste in a calendar month.
Class 1 wastes	Any industrial solid waste or mixture of industrial solid wastes that because of its concentration, or physical or chemical characteristics is toxic, corrosive, flammable, a strong sensitizer or irritant, a generator of sudden pressure by decomposition, heat, or other means, or may pose a substantial present or potential danger to human health or the environment when improperly processed, stored, transported, or disposed of or otherwise managed, as further defined in §335.505 of this title (relating to Class 1 Waste Determination).
Class 2 wastes	Any individual solid waste or combination of industrial solid waste that are not described as Hazardous, Class 1, or Class 3 as defined in §335.506 of this title (relating to Class 2 Waste Determination).
Class 3 wastes	Inert and essentially insoluble industrial solid waste, usually including, but not limited to, materials such as rock, brick, glass, dirt, and certain plastics and rubber, etc., that are not readily decomposable, as further defined in §335.507 of this title (relating to Class 3 Waste Determination).
Commercial solid waste	All types of solid waste generated by stores, offices, restaurants, warehouses, and other nonmanufacturing activities, excluding residential and industrial wastes.
Construction/Demolition Waste	Waste resulting from construction or demolition projects; includes all materials that are directly or indirectly the by-products of construction work or that result from demolition of buildings and other structures, including, but not limited to, paper, cartons, gypsum board, wood, excelsior, rubber, and plastics.
Grease trap waste	Material collected in and from a grease interceptor in the sanitary sewer service line of a commercial, institutional, or industrial food service or processing establishment, including the solids resulting from dewatering processes.
Grit trap waste	Grit trap waste includes waste from interceptors placed in the drains prior to entering the sewer system at maintenance and repair shops, automobile service stations, car washes, laundries, and other similar establishments.
Litter	Rubbish and putrescible waste.

Waste/Material Type	Description
Medical waste	Treated and untreated special waste from health care-related facilities that is comprised of animal waste, bulk blood, bulk human blood, bulk human body fluids, microbiological waste, pathological waste, and sharps as those terms are defined in 25 TAC §1.132 (relating to Definitions) from the sources specified in 25 TAC §1.134 (relating to Application), as well as regulated medical waste as defined in 49 Code of Federal Regulations §173.134(a)(5), except that the term does not include medical waste produced on a farm or ranch as defined in 34 TAC §3.296(f) (relating to Agriculture, Animal Life, Feed, Seed, Plants, and Fertilizer), nor does the term include artificial, nonhuman materials removed from a patient and requested by the patient, including, but not limited to, orthopedic devices and breast implants.
Municipal solid waste	Solid waste, resulting from or incidental to municipal, community, commercial, institutional, and recreational activities, including garbage, rubbish, ashes, street cleanings, dead animals, abandoned automobiles, and all other solid waste other than industrial solid waste.
NHIW	Non-Hazardous Industrial Waste. Includes Class 1 non-hazardous, Class 2 & Class 3 wastes.
Non-RACM	Non-regulated asbestos-containing material as defined in 40 Code of Federal Regulations Part 61. This is asbestos material in a form such that potential health risks resulting from exposure to it are minimal.
Paper	A material made from plant fibers (such as but not limited to wood pulp, rice hulls, and kenaf). The sludge byproduct resulting from the production of paper may be approved as a feedstock pursuant to §332.33(b) of this title (relating to Required Forms, Applications, Reports, and Request To Use the Sludge Byproduct of Paper Production).
RACM	Regulated asbestos-containing material as defined in 40 Code of Federal Regulations Part 61, as amended, includes: friable asbestos material, Category I nonfriable ACM that has become friable; Category I nonfriable ACM that will be or has been subjected to sanding, grinding, cutting, or abrading; or Category II nonfriable ACM that has a high probability of becoming or has become crumbled, pulverized, or reduced to powder by the forces expected to act on the material during demolition or renovation operations.
Residential Waste (Household waste)	Any solid waste (including garbage, trash, and sanitary waste in septic tanks) derived from households (including single and multiple houses, hotels, and motels, bunkhouses, ranger stations, crew quarters, campgrounds, picnic grounds, and day-use recreation areas); does not include yard waste or brush that is completely free of any household wastes.
Septage	The liquid and solid material pumped from a septic tank, cesspool, or similar sewage treatment system.
Sludge	Any solid, semi-solid, or liquid waste generated from a municipal, commercial, or industrial wastewater treatment plant, water-supply treatment plant, or air pollution control facility, exclusive of the treated effluent from a wastewater treatment plant.

Waste/Material Type	Description
Tires (Scrap)	Any tire that can no longer be used for its original intended purpose. Only split, quartered, or shredded tires may be disposed of in a landfill.
Used Oil	Any oil that has been refined from crude oil, has been used, and, as a result of such use, is contaminated by physical or chemical impurities.
White Goods	Discarded large household appliances such as refrigerators, stoves, washing machines, or dishwashers.
Yard Waste	Leaves, grass clippings, yard and garden debris, and brush, including clean woody vegetative material not greater than six inches in diameter that results from landscaping maintenance and land-clearing operations. The term does not include stumps, roots, or shrubs with intact root balls.

