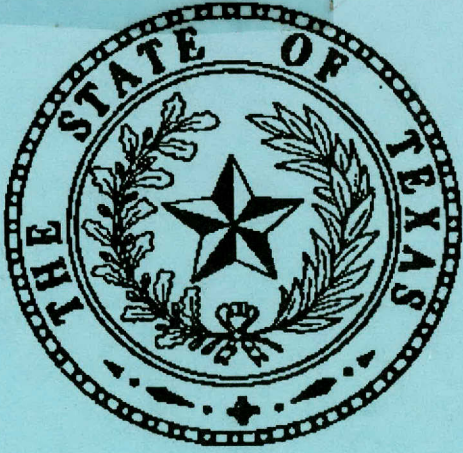


**TxDP4050.3ST29**

**1992/3**

9/09/94 9/99  
D. L. 0610 31006639  
The University of Texas-Pan Am  
Texas State Document



**STATEWIDE CONSOLIDATED  
TRAVEL DATA REPORT**

**FISCAL YEAR 1993  
ANNUAL REPORT  
SEPTEMBER 1992 THROUGH AUGUST 1993**

**Published By:  
General Services Commission  
Inter-Agency Services Division  
Travel Management Section**

**Prepared By:  
Ms. Gerry Pavelka  
Travel Contract/Data Administrator  
(512) 463-3254**

**Assisted By:  
Ms. Diane E. Harker  
Manager  
(512) 463-3559**



## Statewide Consolidated Travel Data Report

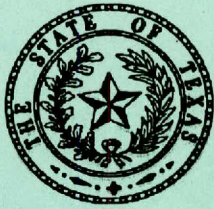
- Source:** State travel expense data shown in this report is a combination of travel expenses as reported for the full fiscal year (see definitions below), through monthly travel data reports and travel expenses charged by state agencies and individual travelers to the State's contracted American Express charge accounts.
- Methodology:** State agencies report certain travel expense data on a monthly basis to the General Services Commission's Travel Management Section for the full fiscal year. This data is entered into a computerized travel system where it is retained until American Express submits, through diskette format, travel expenses billed, where it is combined for the consolidated statewide travel data. This information is estimated to be over 85% accurate for Fiscal Year 1993.
- Analyses:** In most instances, year to year comparisons were not made in this year's report due to the change from the contract travel agency to the contracted charge card as a data source. (The change in data source for Fiscal Year 1993 was made based on changes in the State Travel Management Program which required that contracts be established with multiple travel agencies and mandated use of the travel contracts by all executive branch state agencies.)
- Benchmarking:** New to this year's report is benchmarking the State Travel Management Program performance against travel industry statistics and corporate business travel expenditures. The majority of data used in benchmarking was obtained from *The American Express Business Travel Review*. This quarterly publication provides key travel data drawn from the American Express corporate card and central billing account data bases which include all private and public sector business accounts with American Express.
- Definitions:** State agencies are identified as American Express (A), Combination (C) or Reporting (R) data.
- American Express (A): state agencies that were implemented with American Express charge card services for the full year.
- Combination (C): state agencies that have reported partially for the year and were implemented with American Express during the year. This data was combined.
- Reporting (R): state agencies who have reported complete data for the full fiscal year.

# **STATEWIDE CONSOLIDATED TRAVEL DATA REPORT**

## **TABLE OF CONTENTS FISCAL YEAR 1993**

- 1.0 Executive Summary - Consolidated Travel Data**
- 2.0 State Travel Management Program Overview**
- 3.0 Savings and Revenue Generation**
- 4.0 Consolidated Travel Data - Analyses**
- 5.0 Airlines, Rental Cars, and Destinations**
- 6.0 Travel Activity By State Agency**





**STATE TRAVEL  
MANAGEMENT PROGRAM  
FISCAL YEAR 1993**

**Executive Summary**

**Section 1.0**





# STATE TRAVEL MANAGEMENT PROGRAM FISCAL YEAR 1993

## Executive Summary

<u>Travel Expenditures :</u>	<u>Executive Branch</u>	<u>Colleges and Universities</u>	<u>Legislative and Judicial</u>	<u>Total</u>
Air	\$15.8M	\$25.1M	\$0.4M	\$41.3M
Hotel	13.0M	15.1M	0.3M	28.4M
Rental Car	<u>1.9M</u>	<u>2.4M</u>	<u>0.1M</u>	<u>4.4M</u>
<b>TOTAL</b>	<b>\$30.7M</b>	<b>\$42.6M</b>	<b>\$0.8M</b>	<b>\$74.1M</b>

Airline Trips (Round Trip) -	186,586	= \$222 per trip
Hotel Reservations -	237,620	= \$119 per reservation
Rental Cars-	43,948	= \$ 99 per rental

Source: American Express, State Agency Reports

### Top 5 Airlines (Dollars Expended):

Southwest Airlines	\$10.7M
American Airlines	\$ 8.3M
Continental Airlines	\$ 6.2M
Delta Air Lines	\$ 5.1M
United Airlines	\$ 0.9M

Source: American Express

### Top City Destinations and Top Hotel Chains Within City:

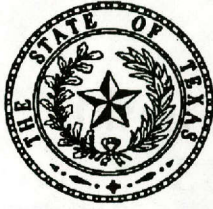
Austin, TX	La Quinta, Holiday Inn, Drury Inns
Houston, TX	Marriott Hotels, Holiday Inn, La Quinta
San Antonio, TX	Marriott Hotels, La Quinta, Holiday Inn
Dallas, TX	Holiday Inn, Marriott Hotels, La Quinta
Washington, DC	Sheraton Corp, Hyatt Hotel, Hilton Hotel
Corpus Christi, TX	Marriott Hotels, Sheraton, Holiday Inn
New Orleans, LA	Hilton Hotels, Sheraton, Marriott Hotels
El Paso, TX	La Quinta, Westin Hotels, Holiday Inn
Chicago, IL	Hilton Hotels, Hyatt Hotel, Marriott Hotels
Atlanta, GA	Marriott Hotels, Hyatt Hotel, Hilton Hotels

Source: American Express

### Top 5 Rental Car Companies (Rentals):

Avis Rent A Car	33,259
Advantage Rent A Car	23,095
Budget Rent A Car	2,300
Alamo Rent A Car	1,504
Hertz Rent A Car	1,276

Source: Avis, Advantage, American Express



# STATE TRAVEL MANAGEMENT PROGRAM FISCAL YEAR 1993

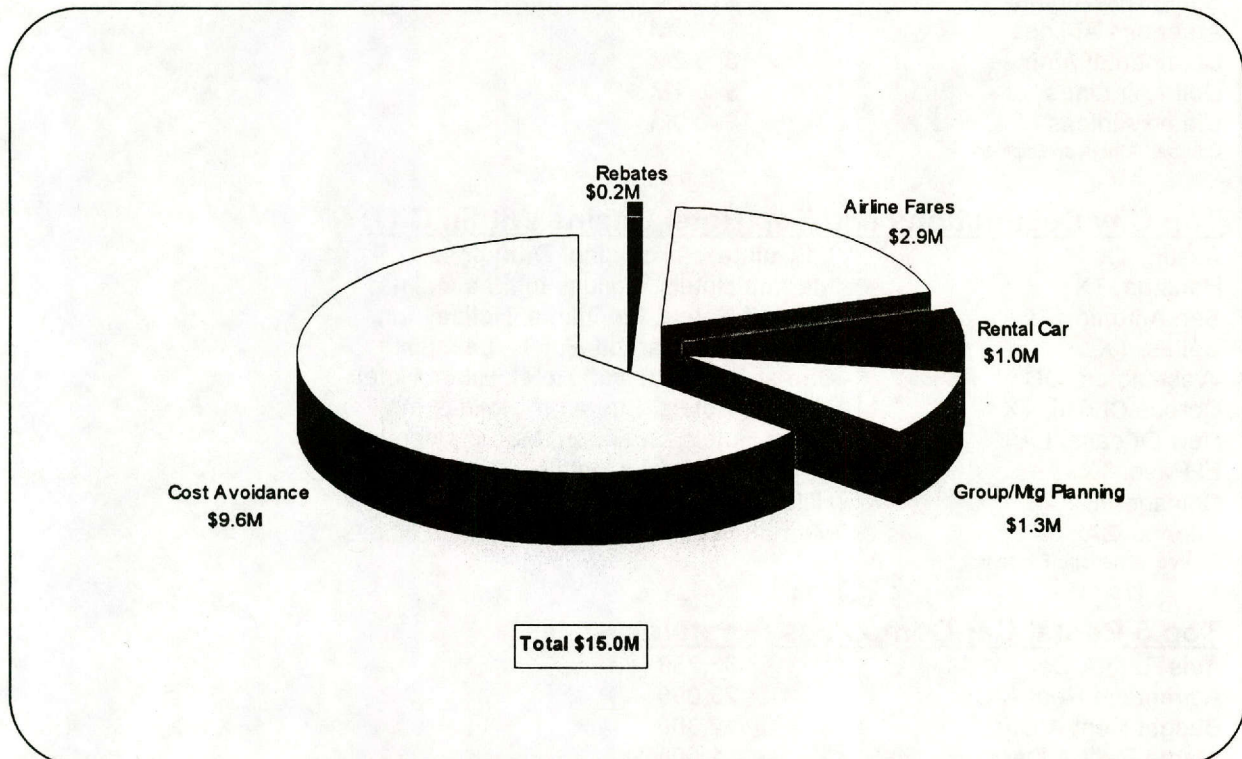
## Savings and Revenue Generation \$15.0M

### Savings:

- \$9.6M Cost Avoidance - contract travel agencies booked lowest applicable airfares
- \$2.9M Airline Fares - airline contract fares
- \$1.3M Group/Mtg Planning - group/meeting planning contracts
- \$1.0M Rental Car - rental car contracts

### Revenue:

- \$0.2M Rebates - travel agency contracts







# **STATE TRAVEL MANAGEMENT PROGRAM FISCAL YEAR 1993**

## **State Travel Management Program (STMP) Overview**

### **Section 2.0**



## **State Travel Management Program Overview**

The Inter-Agency Services Division (formerly the Travel and Transportation Division) of the General Services Commission (GSC) was created by the 70th Texas Legislature in 1987 to provide centralized management and coordination of state business travel. The Travel Management Section, with a staff of seven, administers the State Travel Management Program (STMP) that is designed to help state agencies manage state travel expenditures, monitor the state's travel activity, and provide travel services to state agencies, resulting in a more efficient use of taxpayer dollars. There are four components of the STMP: travel agency, charge card, negotiated rates, and group/meeting planning services.

State agencies in the executive branch of state government are required to participate in the STMP by using the contracts for travel services awarded by GSC. These contracts include services from travel agencies, charge card providers, rental car companies, airlines, and hotels. Institutions of higher education are not required to use the contracts for travel agency services but are required to use all other travel service contracts when the services are purchased by General Revenue or Educational and General Funds.

In Fiscal Year 1993, the STMP had contracts with nine different travel agencies around the state to assist state employees with travel reservations and ticketing. These agencies are required by the contract to book the lowest available airfare. They also assist state employees with hotel and rental car reservations, as needed. Contract travel agents share a percentage of the commissions they receive from state business with the State. These rebates are deposited into the General Revenue Fund.

The STMP also provides contract charge card services to state agencies and employees for the purpose of paying travel expenses incurred on official state business. Individual and agency charge accounts allow state agencies to pay employee travel expenses directly to travel vendors and allow employees to pay travel expenses without using personal funds or obtaining cash advances from the State. The contract vendor also provides data management reports on charged travel expenses to STMP.

The STMP negotiates discounted rates for state business with airlines, rental car companies, and lodging establishments. During FY 1993, GSC had contracts for discounted airline fares with Southwest Airlines in 38 city-pairs, 2 rental car companies, and approximately 860 hotels around the country for state business travel.

STMP staff also provides group/meeting planning services, on a voluntary basis, to state agencies and to colleges and universities, assisting them in securing facilities for meetings, conferences, seminars, and other events at the lowest possible cost to the State.

Information on contract travel services is disseminated to state travelers through the *Texas State Travel Directory*, which is updated yearly and distributed to all state agencies, and through a newsletter, "Travel-N-Texas Update," which is distributed to state travelers through state agency travel coordinators.

During Fiscal Year 1993, savings of \$2.9 million were achieved through the use of contract airfares and more than \$1.0 million through the use of the rental car contracts. From Fiscal Year 1989 through Fiscal Year 1993, the STMP has had a fiscal impact of over \$43 million.





# STATE TRAVEL MANAGEMENT PROGRAM FISCAL YEAR 1993



**Savings and Revenue Generation**



**Airline Contract Fare Savings**

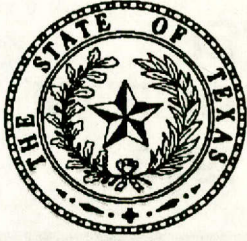


**Rental Car Contract Discount**



**Hotel Contract Discount**





# STATE TRAVEL MANAGEMENT PROGRAM FISCAL YEAR 1993

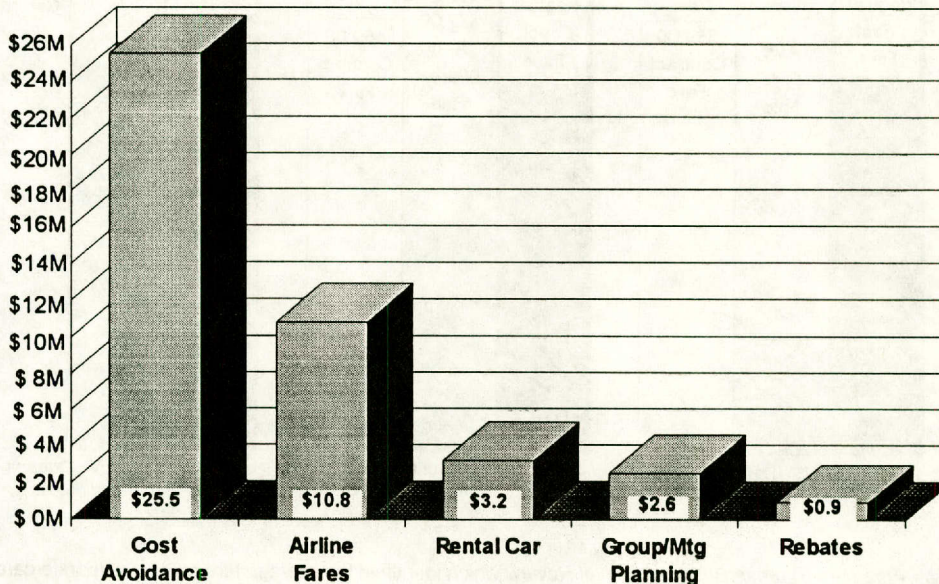
## Savings and Revenue Generation Fiscal Years 1989 Through 1993 Over \$43 Million

### Savings:

- \$25.5M Cost Avoidance - contract travel agencies booked lowest applicable airfares
- \$10.8M Airline Fares - airline contract fares
- \$ 3.2M Rental Car - rental car contracts
- \$ 2.6M Group/Mtg Planning - group/meeting planning contracts

### Revenue:

- \$ 0.9M Rebates - travel agency contracts

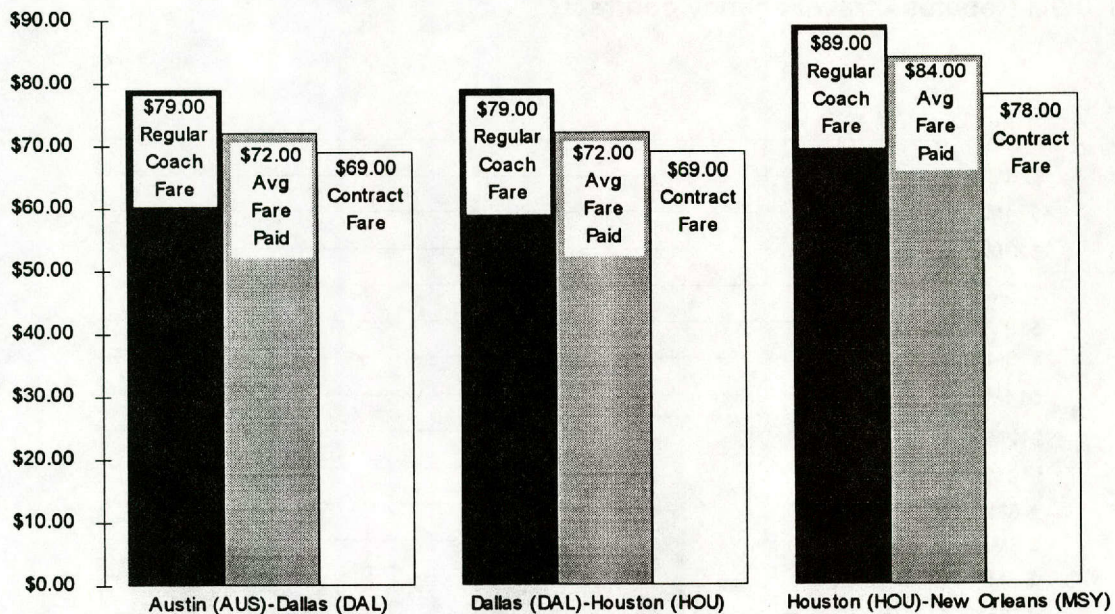




# STATE TRAVEL MANAGEMENT PROGRAM FISCAL YEAR 1993

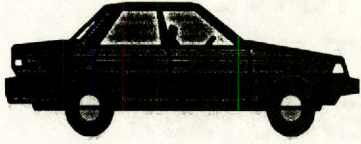
## Airline Contract Fare Savings

- ◆ 38 city-pairs were under contract (only Southwest Airlines offered contract fares)
- ◆ Savings = \$2.9 million
- ◆ Contract discount savings = 13% off regular coach fare, 6% off average fare paid



Source: *The American Express Business Travel Review* which identified the average fare paid by corporate card clients (3 Southwest contract markets measured by American Express Airfare Management Unit. These city-pairs represent #2, #6 and #30 in volume for state travelers).

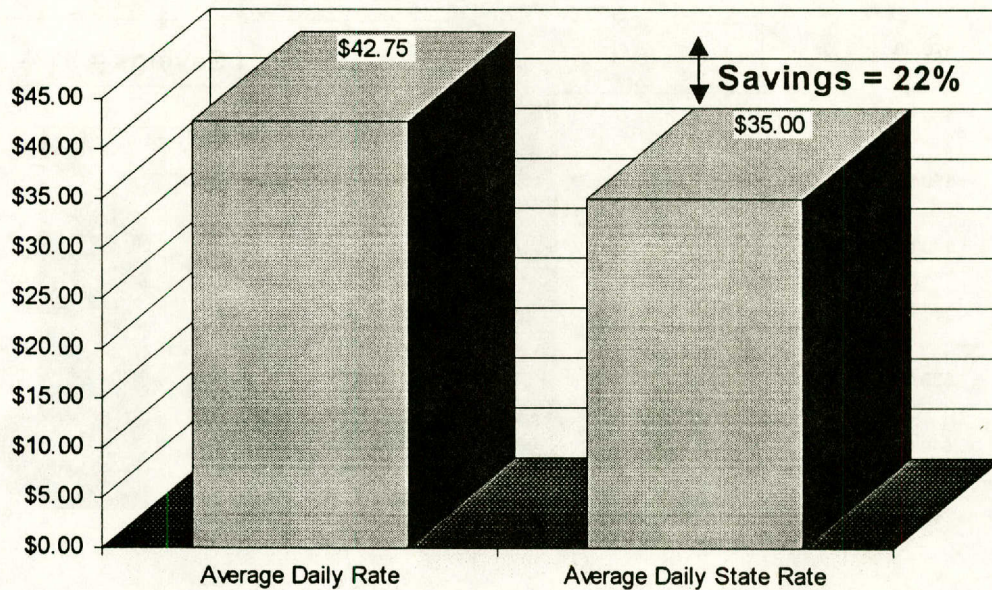




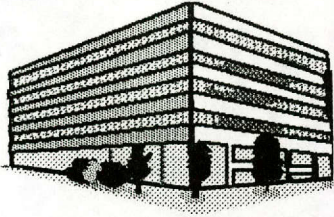
# STATE TRAVEL MANAGEMENT PROGRAM FISCAL YEAR 1993

## Rental Car Contract Discount

- ◆ 2 Rental Car vendors were under contract
- ◆ Average daily rate = \$42.75
- ◆ Average daily state contract rate = \$35.00
- ◆ Contract discount savings = 22%



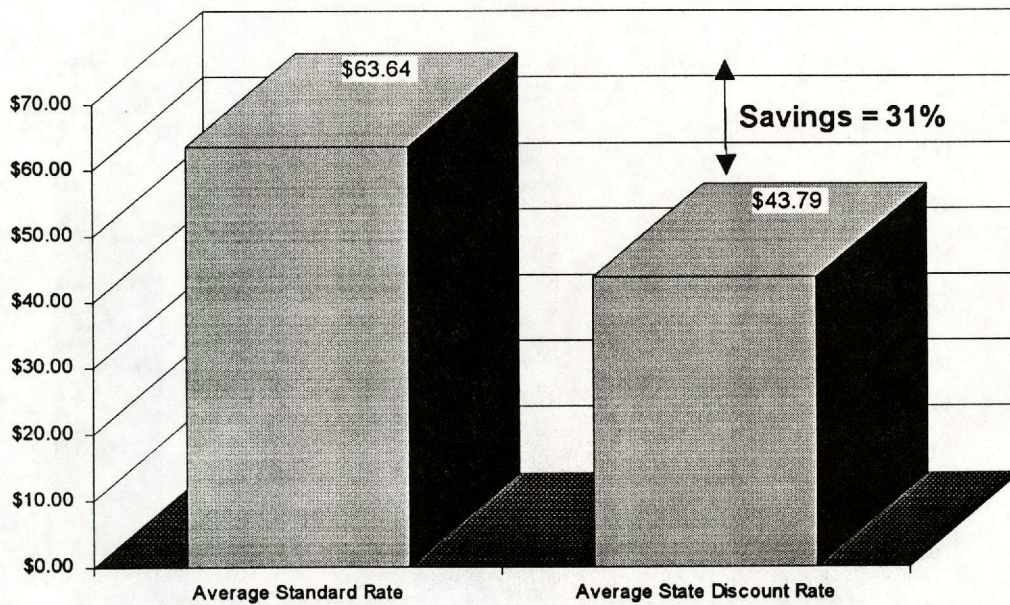
Source: American Express Corporate Card Clients as compared to State negotiated contract.



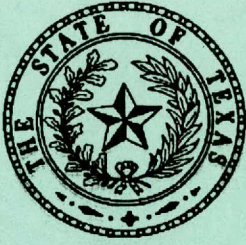
# STATE TRAVEL MANAGEMENT PROGRAM FISCAL YEAR 1993

## Hotel Contract Discount

- ◆ 860 Hotels were under contract
- ◆ Average standard room rate = \$63.64
- ◆ Average state discount room rate = \$43.79
- ◆ Contract discount savings = 31%



Source: Hotel Rate Agreements for contracted hotels.



# CONSOLIDATED TRAVEL DATA FISCAL YEAR 1993



**Travel Expenditures By Governmental Branch**

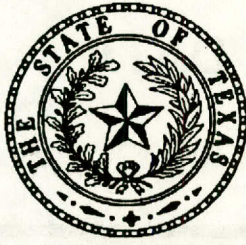


**Top 20 High Volume State Agencies**



**State Agencies Using Travel Contracts**

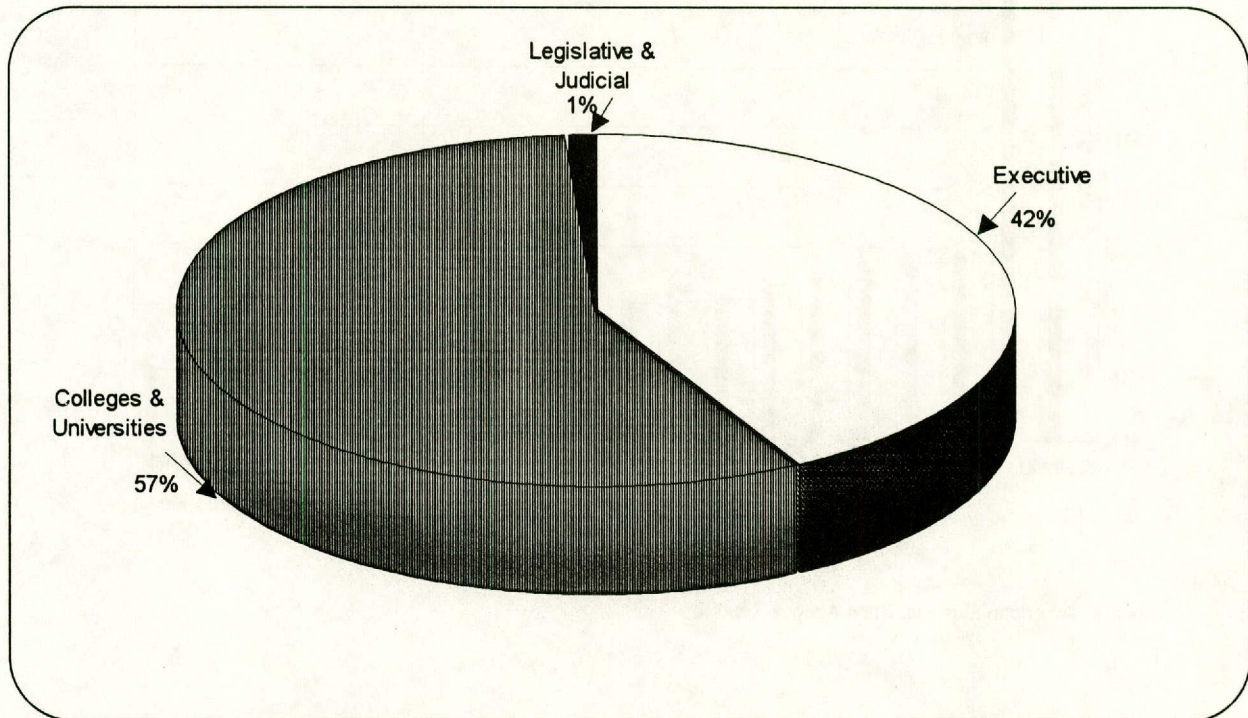




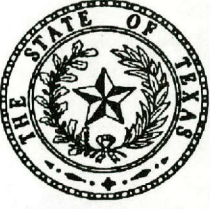
## CONSOLIDATED TRAVEL DATA FISCAL YEAR 1993

### Travel Expenditures By Governmental Branch

- ◆ Colleges and Universities expenditures = \$42.6M
- ◆ Executive Branch state agencies expenditures = \$30.7M
- ◆ Legislative and Judicial state agencies expenditures = \$0.8M
- ◆ Total travel expenditures = \$74.1M



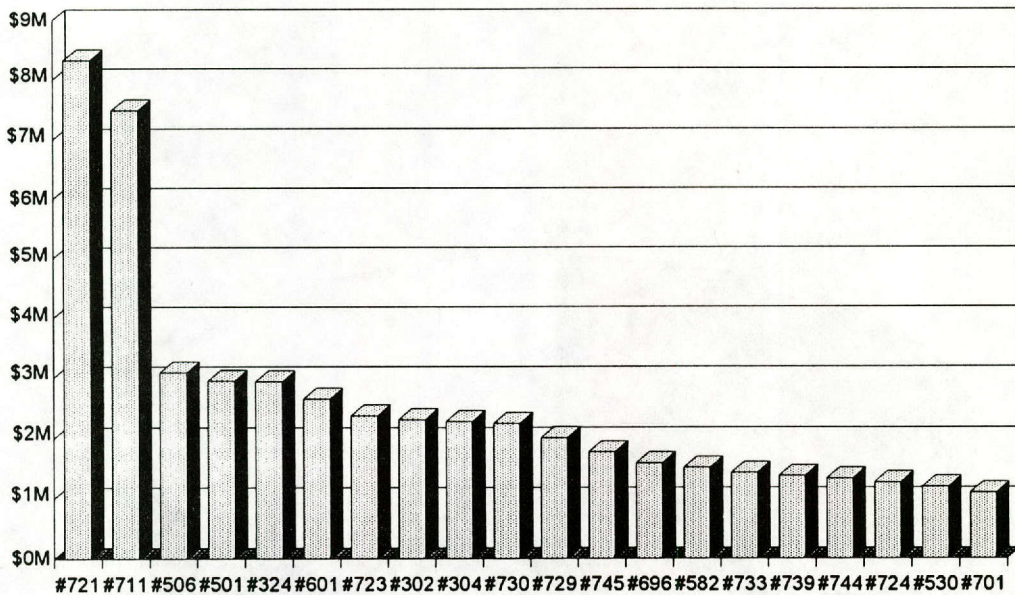
Source: American Express, State Agency Reports



# CONSOLIDATED TRAVEL DATA FISCAL YEAR 1993

## Top 20 High Volume State Agencies

- ◆ Top twenty (20) state agencies account for \$51.2M = 69% of total travel expenditures



(See listing on next page for State Agency name)

Source: American Express, State Agency Reports

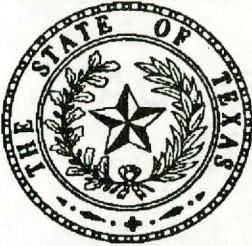


## CONSOLIDATED TRAVEL DATA FISCAL YEAR 1993

### Top 20 High Volume State Agencies

<u>State Agency Number and Name</u>	<u>Dollars Expended</u>
#721 University of Texas at Austin .....	\$ 8.3M
#711 Texas A&M University .....	7.5M
#506 UT System Cancer Center .....	3.1M
#501 Department of Health .....	2.9M
#324 Department of Human Services .....	2.9M
#601 Department of Transportation .....	2.7M
#723 UT Medical Branch - Galveston .....	2.4M
#302 Office of Attorney General .....	2.3M
#304 Comptroller of Public Accounts .....	2.3M
#730 University of Houston .....	2.2M
#729 UT Southwestern Medical Center - Dallas .....	2.0M
#745 UT Health Science Center - San Antonio .....	1.8M
#696 TDCJ/ Institutional Division .....	1.6M
#582 Natural Resources Conservation Commission .....	1.5M
#733 Texas Tech University .....	1.4M
#739 Texas Tech University Health Science Center .....	1.4M
#744 UT Health Science Center - Houston .....	1.3M
#724 University of Texas at El Paso .....	1.3M
#530 Department of Protective/Regulatory Services .....	1.2M
#701 Texas Education Agency .....	<u>1.1M</u>
TOTAL .....	\$51.2M

Source: American Express, State Agency Reports

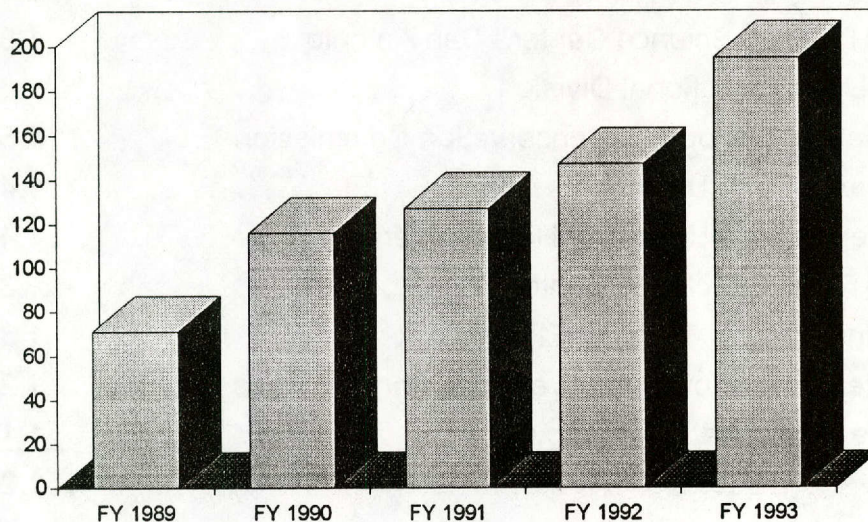


# STATE TRAVEL MANAGEMENT PROGRAM FISCAL YEAR 1993

## State Agencies Using Travel Contracts

- ◆ State agencies using travel contracts FY 1989 = 71
- ◆ State agencies using travel contracts FY 1993 = 195
- ◆ Growth = 175% (Effective FY 1993 use of travel contracts required of Executive Branch State Agencies)

<u>FY</u>	<u>State Agencies</u>	<u>Growth</u>
1989	71	
1990	116	+ 63%
1991	127	+ 9%
1992	147	+ 16%
1993	195	+ 33%







# STATE TRAVEL MANAGEMENT PROGRAM FISCAL YEAR 1993



**Travel Expenditure Components**



**Top Airlines**



**Utilization Of Rental Car Contracts**



**Top Twenty Destinations**

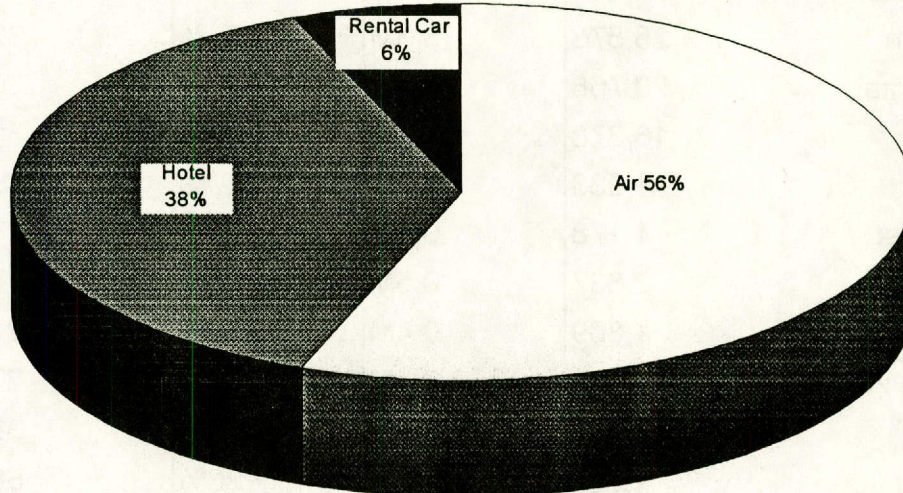




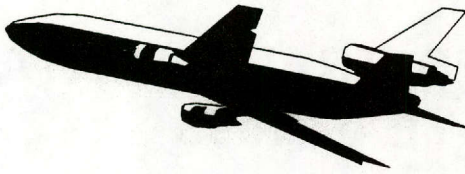
## CONSOLIDATED TRAVEL DATA FISCAL YEAR 1993

### Travel Expenditure Components

- ◆ Air expenditures = \$41.3M
- ◆ Hotel expenditures = \$28.4M
- ◆ Rental Car expenditures = \$4.4M
- ◆ Total travel expenditures = \$74.1M



Source: American Express, State Agency Reports



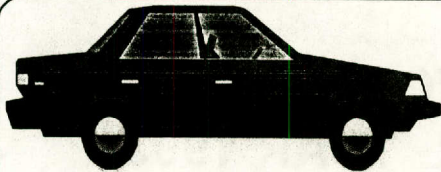
# AIRLINES FISCAL YEAR 1993

## Top Airlines

- ◆ Southwest Airlines = 31.3%
- ◆ American Airlines = 24.2%
- ◆ Continental Airlines = 18.2%
- ◆ Delta Air Lines = 14.9%

	# of Tickets	Dollars Expended	% of Total Expended	Average Per Ticket
Southwest	74,407	\$10.7M	31.30%	\$144
American	25,576	8.3M	24.20%	323
Continental	20,768	6.2M	18.20%	300
Delta	16,378	5.1M	14.90%	312
United	1,933	0.9M	2.70%	468
Northwest	1,178	0.5M	1.50%	433
Conquest	2,637	0.5M	1.40%	179
Trans World	1,309	0.4M	1.10%	279
America West	1,261	0.4M	1.00%	278
US Air	841	0.3M	0.90%	380
All Other	1,927	1.0M	2.80%	505
<b>Total</b>	<b>148,215</b>	<b>\$34.3M</b>	<b>100.00%</b>	<b>\$231</b>

Source: American Express



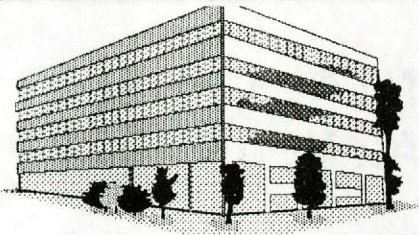
## RENTAL CARS FISCAL YEAR 1993

### Utilization Of Rental Car Contracts

- ◆ Expenditures with contract vendors, Advantage and Avis = 78%
- ◆ Contract discount savings = \$1.0M

Rental Car Vendor	Number of Rentals	Dollars Charged	% of Total Expended	Average Per Charge
Avis Rent A Car	33,259	\$3.2M	51.30%	\$ 95
Advantage Rent A Car	23,095	1.7M	27.00%	72
Budget Rent A Car	2,300	0.3M	4.40%	118
Alamo Rent A Car	1,504	0.2M	2.69%	110
Hertz Rent A Car	1,276	0.2M	2.66%	129
National Car Rental	1,237	0.1M	2.32%	116
Other	6,029	0.6M	9.63%	98
<b>TOTAL</b>	<b>68,700</b>	<b>\$6.3M</b>	<b>100.00%</b>	<b>\$ 90</b>

Source: Avis, Advantage and American Express



# HOTELS FISCAL YEAR 1993

## Top Twenty Destinations

- ◆ Total hotel expenditures = \$23.0M
- ◆ Top twenty destinations = \$11.6M

<u>City And State</u>	<u>Dollars Expended</u>
Austin, TX .....	\$ 2.7M
Houston, TX .....	1.4M
San Antonio, TX .....	1.2M
Dallas, TX .....	0.9M
Washington, DC .....	0.8M
Corpus Christi, TX .....	0.6M
New Orleans, LA .....	0.5M
El Paso, TX .....	0.4M
Chicago, IL .....	0.4M
Atlanta, GA .....	0.3M
Lubbock, TX .....	0.3M
San Francisco, CA .....	0.3M
College Station, TX .....	0.3M
Abilene, TX .....	0.3M
San Diego, CA .....	0.2M
Amarillo, TX .....	0.2M
Galveston, TX .....	0.2M
McAllen, TX .....	0.2M
Arlington, TX .....	0.2M
New York, NY .....	0.2M
Other .....	<u>11.4M</u>
<b>TOTAL .....</b>	<b>\$23.0M</b>

Source: American Express



# **CONSOLIDATED TRAVEL DATA FISCAL YEAR 1993**

## **Travel Activity by State Agency**

### **Section 6.0**

## CONSOLIDATED TRAVEL DATA FISCAL YEAR 1993

State agencies are listed in numerical order by state agency code numbers. Data source is indicated beside each. (A) - American Express; (C) - Combined; (R) - Reported.

<u>NOTE #</u>	<u>DEFINITION</u>
---------------	-------------------

- |     |   |
|-----|---|
| #1  | #511 - Board of Vocational Nurse Examiners - the air volume is showing a minus amount due to the credits to this account being greater than the debits. |
| #2  | #519 - Texas Air Control Board was combined with #582, TX Natural Resources Conservation Commission. The FY 93 data is reflected in #582.               |
| #3  | #6551 - MHMR/Genetics Screening travel expense data was compiled with #655, TX Dept. of MHMR.   |
| #4  | #696B - TDCJ/Community Justice Assist Division travel expense data was compiled with #696, TDCJ/Institutional Division.                                 |
| #5  | #696C - TDCJ/TX Council/Offenders with Mental Impairments travel expense data was compiled with #696, TDCJ/Institutional Division.                      |
| #6  | #702 - TX Council on Vocational Education was abolished and #363-Workforce on Economic Competitiveness was created. Data for #702 is reflected in #363. |
| #7  | #710 - Texas A&M University System & Components - travel expense data was compiled with #711-TX A&M University.   |
| #8  | #714 - University of Texas at Arlington - rental car charges are not reflected because this information was not reported on the monthly travel reports. |
| #9  | #853 - Texas Grain Sorghum Producers Board did not report travel data.  |
| #10 | #905 - Texas Surplus Property was merged with #303, General Services Commission. The data for #905 is reflected in #303.                                |
| #11 | State schools that are a part of #694, Texas Youth Commission. The data for these schools was compiled with #694.                                       |



101	Texas State Senate	( A )	
	Airline Trips: 645		\$102,590.66
	Hotel Reserv: 278		\$48,029.05
	Car Rentals: 80		\$8,752.62
			<hr/>
			\$159,372.33
102	Texas House of Representatives	( A )	
	Airline Trips: 862		\$114,319.83
	Hotel Reserv: 0		\$0.00
	Car Rentals: 0		\$0.00
			<hr/>
			\$114,319.83
103	Texas Legislative Council	( A )	
	Airline Trips: 78		\$17,340.50
	Hotel Reserv: 60		\$7,688.47
	Car Rentals: 5		\$510.09
			<hr/>
			\$25,539.06
104	Legislative Budget Board	( A )	
	Airline Trips: 56		\$10,868.50
	Hotel Reserv: 8		\$765.40
	Car Rentals: 0		\$0.00
			<hr/>
			\$11,633.90
105	Legislative Reference Library	( A )	
	Airline Trips: 3		\$864.00
	Hotel Reserv: 2		\$1,028.38
	Car Rentals: 1		\$154.39
			<hr/>
			\$2,046.77
116	Sunset Advisory Commission	( R )	
	Airline Trips: 18		\$2,615.00
	Hotel Reserv: 16		\$1,981.00
	Car Rentals: 6		\$362.81
			<hr/>
			\$4,958.81
201	Supreme Court of Texas	( A )	
	Airline Trips: 24		\$5,487.00
	Hotel Reserv: 9		\$3,080.74
	Car Rentals: 2		\$477.30
			<hr/>
			\$9,045.04
203	Board of Law Examiners	( R )	
	Airline Trips: 25		\$4,245.50
	Hotel Reserv: 65		\$13,442.54
	Car Rentals: 29		\$3,066.73
			<hr/>
			\$20,754.77

204	Court Reporters Certification Board	( R )		
	Airline Trips:	3		\$344.00
	Hotel Reserv:	15		\$1,439.98
	Car Rentals:	0		\$0.00
				<hr/>
				\$1,783.98
211	Texas Court of Criminal Appeals	( R )		
	Airline Trips:	15		\$3,165.69
	Hotel Reserv:	25		\$8,800.71
	Car Rentals:	3		\$347.26
				<hr/>
				\$12,313.66
212	Office of Court Administration	( R )		
	Airline Trips:	26		\$4,965.00
	Hotel Reserv:	64		\$8,236.19
	Car Rentals:	8		\$346.14
				<hr/>
				\$13,547.33
213	State Prosecuting Attorney	( R )		
	Airline Trips:	0		\$0.00
	Hotel Reserv:	4		\$774.00
	Car Rentals:	0		\$0.00
				<hr/>
				\$774.00
221	1st Court of Appeals	( R )		
	Airline Trips:	7		\$1,188.00
	Hotel Reserv:	11		\$1,770.10
	Car Rentals:	0		\$0.00
				<hr/>
				\$2,958.10
222	2nd Court of Appeals	( R )		
	Airline Trips:	10		\$2,068.00
	Hotel Reserv:	20		\$3,733.95
	Car Rentals:	1		\$158.80
				<hr/>
				\$5,960.75
223	3rd Court of Appeals	( R )		
	Airline Trips:	6		\$1,612.99
	Hotel Reserv:	8		\$1,263.10
	Car Rentals:	1		\$293.67
				<hr/>
				\$3,169.76
224	4th Court of Appeals	( R )		
	Airline Trips:	3		\$542.00
	Hotel Reserv:	12		\$1,321.00
	Car Rentals:	3		\$340.74
				<hr/>
				\$2,203.74

225	5th Court of Appeals	( A )	
	Airline Trips:	47	\$6,082.00
	Hotel Reserv:	14	\$3,138.07
	Car Rentals:	15	\$440.98
			<hr/>
			\$9,661.05
226	6th Court of Appeals	( R )	
	Airline Trips:	4	\$1,011.71
	Hotel Reserv:	23	\$5,679.16
	Car Rentals:	0	\$0.00
			<hr/>
			\$6,690.87
227	7th Court of Appeals	( R )	
	Airline Trips:	9	\$1,580.00
	Hotel Reserv:	19	\$2,416.55
	Car Rentals:	3	\$267.32
			<hr/>
			\$4,263.87
228	8th Court of Appeals	( R )	
	Airline Trips:	28	\$4,858.06
	Hotel Reserv:	22	\$3,273.85
	Car Rentals:	14	\$1,300.41
			<hr/>
			\$9,432.32
229	9th Court of Appeal	( R )	
	Airline Trips:	2	\$412.00
	Hotel Reserv:	12	\$2,134.24
	Car Rentals:	1	\$95.70
			<hr/>
			\$2,641.94
230	10th Court of Appeals	( R )	
	Airline Trips:	1	\$128.00
	Hotel Reserv:	15	\$1,621.55
	Car Rentals:	0	\$0.00
			<hr/>
			\$1,749.55
231	11th Court of Appeals	( R )	
	Airline Trips:	2	\$261.00
	Hotel Reserv:	13	\$2,061.55
	Car Rentals:	0	\$0.00
			<hr/>
			\$2,322.55
232	12th Court of Appeals	( R )	
	Airline Trips:	7	\$1,044.09
	Hotel Reserv:	16	\$2,733.00
	Car Rentals:	1	\$132.50
			<hr/>
			\$3,909.59

233	13th Court of Appeals	( R )	
	Airline Trips: 9		\$1,881.50
	Hotel Reserv: 35		\$4,182.42
	Car Rentals: 5		\$543.44
			<hr/>
			\$6,607.36
234	14th Court of Appeals	( R )	
	Airline Trips: 16		\$1,955.00
	Hotel Reserv: 27		\$4,145.60
	Car Rentals: 6		\$751.12
			<hr/>
			\$6,851.72
242	State Commis. on Judicial Conduct	( A )	
	Airline Trips: 21		\$2,726.00
	Hotel Reserv: 20		\$1,807.36
	Car Rentals: 11		\$820.21
			<hr/>
			\$5,353.57
243	State Law Library	( A )	
	Airline Trips: 4		\$1,325.00
	Hotel Reserv: 3		\$639.15
	Car Rentals: 0		\$0.00
			<hr/>
			\$1,964.15
301	Office of the Governor	( A )	
	Airline Trips: 979		\$173,620.90
	Hotel Reserv: 431		\$47,118.82
	Car Rentals: 87		\$7,345.48
			<hr/>
			\$228,085.20
302	TX Attorney General's Office	( A )	
	Airline Trips: 8,881		\$1,390,127.03
	Hotel Reserv: 7,008		\$614,992.66
	Car Rentals: 4,234		\$296,113.18
			<hr/>
			\$2,301,232.87
303	General Services Commission	( A )	
	Airline Trips: 290		\$48,549.90
	Hotel Reserv: 451		\$31,600.79
	Car Rentals: 73		\$5,529.31
			<hr/>
			\$85,680.00
304	Comptroller of Public Accounts	( A )	
	Airline Trips: 3,691		\$823,369.85
	Hotel Reserv: 6,923		\$1,124,759.57
	Car Rentals: 1,869		\$325,050.05
			<hr/>
			\$2,273,179.47

305	General Land Office & Vet. Land Brd. ( A )	
	Airline Trips: 1,841	\$368,690.13
	Hotel Reserv: 1,376	\$140,906.50
	Car Rentals: 123	\$8,275.39
		<hr/>
		\$517,872.02
306	Library and Archives Commission ( A )	
	Airline Trips: 152	\$20,985.18
	Hotel Reserv: 216	\$12,340.79
	Car Rentals: 109	\$6,327.62
		<hr/>
		\$39,653.59
307	Secretary of State's Office ( A )	
	Airline Trips: 158	\$26,636.00
	Hotel Reserv: 12	\$1,756.83
	Car Rentals: 0	\$0.00
		<hr/>
		\$28,392.83
308	State Auditor's Office ( A )	
	Airline Trips: 692	\$113,543.59
	Hotel Reserv: 1,297	\$158,154.88
	Car Rentals: 333	\$35,971.80
		<hr/>
		\$307,670.27
310	State Treasury Department ( A )	
	Airline Trips: 250	\$38,093.00
	Hotel Reserv: 441	\$42,094.41
	Car Rentals: 198	\$19,767.09
		<hr/>
		\$99,954.50
312	State Securities Board ( A )	
	Airline Trips: 146	\$24,695.44
	Hotel Reserv: 1	\$94.00
	Car Rentals: 0	\$0.00
		<hr/>
		\$24,789.44
313	Department of Information Resources ( A )	
	Airline Trips: 178	\$47,489.22
	Hotel Reserv: 125	\$22,547.78
	Car Rentals: 31	\$3,271.81
		<hr/>
		\$73,308.81
318	Texas Commission for the Blind ( A )	
	Airline Trips: 363	\$61,052.00
	Hotel Reserv: 427	\$33,177.74
	Car Rentals: 118	\$8,252.23
		<hr/>
		\$102,481.97

322	Texas Employment Commission	( A )	
	Airline Trips: 1,985		\$406,647.41
	Hotel Reserv: 1,139		\$110,052.89
	Car Rentals: 105		\$12,686.96
			<hr/>
			\$529,387.26
323	Teacher Retirement System	( C )	
	Airline Trips: 973		\$274,069.31
	Hotel Reserv: 1,350		\$141,055.27
	Car Rentals: 425		\$43,068.14
			<hr/>
			\$458,192.72
324	Texas Department of Human Services	( A )	
	Airline Trips: 10,213		\$1,752,794.87
	Hotel Reserv: 14,145		\$1,100,139.83
	Car Rentals: 920		\$82,126.26
			<hr/>
			\$2,935,060.96
325	Firefighter's Pension Commission	( A )	
	Airline Trips: 3		\$814.00
	Hotel Reserv: 10		\$2,598.77
	Car Rentals: 1		\$176.00
			<hr/>
			\$3,588.77
327	Employees Retirement System	( A )	
	Airline Trips: 253		\$60,544.11
	Hotel Reserv: 52		\$6,688.02
	Car Rentals: 20		\$1,790.49
			<hr/>
			\$69,022.62
329	Real Estate Commission	( A )	
	Airline Trips: 49		\$10,969.00
	Hotel Reserv: 32		\$4,095.67
	Car Rentals: 9		\$1,143.39
			<hr/>
			\$16,208.06
3291	TX Appraiser Licensing & Cert Brd	( A )	
	Airline Trips: 24		\$4,787.00
	Hotel Reserv: 37		\$4,909.97
	Car Rentals: 6		\$330.19
			<hr/>
			\$10,027.16
330	Texas Rehabilitation Commission	( A )	
	Airline Trips: 2,281		\$368,079.77
	Hotel Reserv: 5,219		\$429,553.07
	Car Rentals: 971		\$70,305.22
			<hr/>
			\$867,938.06

332	TX Dept of Housing & Community Affrs ( A )		
	Airline Trips:	614	\$122,299.89
	Hotel Reserv:	795	\$79,528.09
	Car Rentals:	90	\$9,053.77
			<hr/>
			\$210,881.75
333	Office of State-Federal Relations ( A )		
	Airline Trips:	58	\$19,575.06
	Hotel Reserv:	29	\$4,049.85
	Car Rentals:	16	\$1,969.26
			<hr/>
			\$25,594.17
335	Texas Commission for the Deaf ( A )		
	Airline Trips:	25	\$3,059.00
	Hotel Reserv:	21	\$1,748.35
	Car Rentals:	5	\$301.71
			<hr/>
			\$5,109.06
337	Brd of Tax Professional Examiners ( A )		
	Airline Trips:	2	\$171.00
	Hotel Reserv:	1	\$74.00
	Car Rentals:	8	\$728.49
			<hr/>
			\$973.49
338	State Pension Review Board ( A )		
	Airline Trips:	1	\$256.00
	Hotel Reserv:	3	\$802.18
	Car Rentals:	0	\$0.00
			<hr/>
			\$1,058.18
340	Texas Department on Aging ( A )		
	Airline Trips:	129	\$19,851.41
	Hotel Reserv:	79	\$8,642.31
	Car Rentals:	8	\$682.50
			<hr/>
			\$29,176.22
342	State Aircraft Pooling Board ( A )		
	Airline Trips:	2	\$62.19
	Hotel Reserv:	48	\$3,548.87
	Car Rentals:	0	\$0.00
			<hr/>
			\$3,611.06
344	Commission on Human Rights ( A )		
	Airline Trips:	20	\$2,191.00
	Hotel Reserv:	209	\$16,247.06
	Car Rentals:	35	\$3,096.12
			<hr/>
			\$21,534.18

346	Interagency Council/Sex Offenders	( A )	
	Airline Trips:	27	\$5,949.90
	Hotel Reserv:	10	\$1,149.20
	Car Rentals:	4	\$147.09
			<hr/>
			\$7,246.19
347	Texas Public Finance Authority	( A )	
	Airline Trips:	50	\$9,092.00
	Hotel Reserv:	6	\$1,600.75
	Car Rentals:	4	\$248.26
			<hr/>
			\$10,941.01
350	National Research Laboratory Comm.	( A )	
	Airline Trips:	304	\$67,747.95
	Hotel Reserv:	95	\$9,463.69
	Car Rentals:	75	\$4,839.07
			<hr/>
			\$82,050.71
352	Texas Bond Review Board	( A )	
	Airline Trips:	5	\$1,484.00
	Hotel Reserv:	10	\$578.96
	Car Rentals:	3	\$234.32
			<hr/>
			\$2,297.28
353	TX Incentive & Productivity Comm.	( A )	
	Airline Trips:	6	\$1,624.00
	Hotel Reserv:	13	\$1,176.65
	Car Rentals:	0	\$0.00
			<hr/>
			\$2,800.65
354	Texas Space Commission	( A )	
	Airline Trips:	34	\$6,387.00
	Hotel Reserv:	2	\$222.16
	Car Rentals:	3	\$157.57
			<hr/>
			\$6,766.73
355	Children's Trust Fund of TX Council	( A )	
	Airline Trips:	61	\$6,629.00
	Hotel Reserv:	29	\$3,900.11
	Car Rentals:	10	\$550.25
			<hr/>
			\$11,079.36
356	Texas Ethics Commission	( A )	
	Airline Trips:	92	\$13,916.58
	Hotel Reserv:	0	\$0.00
	Car Rentals:	0	\$0.00
			<hr/>
			\$13,916.58



359	Office of Public Insurance Counsel	( C )	
	Airline Trips:	26	\$6,222.00
	Hotel Reserv:	5	\$451.89
	Car Rentals:	5	\$257.64
			<hr/>
			\$6,931.53
360	Office of Administrative Hearings	( A )	
	Airline Trips:	8	\$1,933.00
	Hotel Reserv:	1	\$325.19
	Car Rentals:	0	\$0.00
			<hr/>
			\$2,258.19
363	Worforce/Eco Competitiveness	( A )	
	Airline Trips:	10	\$2,942.00
	Hotel Reserv:	21	\$3,551.48
	Car Rentals:	2	\$233.20
			<hr/>
			\$6,726.68
401	Adjutant General's Department	( A )	
	Airline Trips:	97	\$27,349.50
	Hotel Reserv:	222	\$20,700.02
	Car Rentals:	64	\$4,145.27
			<hr/>
			\$52,194.79
403	Texas Veterans Commission	( A )	
	Airline Trips:	92	\$16,412.00
	Hotel Reserv:	78	\$11,818.24
	Car Rentals:	3	\$370.14
			<hr/>
			\$28,600.38
405	Department of Public Safety	( A )	
	Airline Trips:	792	\$231,103.73
	Hotel Reserv:	9,858	\$747,800.84
	Car Rentals:	215	\$30,508.14
			<hr/>
			\$1,009,412.71
406	Texas National Guard Armory Board	( A )	
	Airline Trips:	49	\$8,311.81
	Hotel Reserv:	393	\$26,533.38
	Car Rentals:	31	\$1,602.56
			<hr/>
			\$36,447.75
407	Comm. on Law Enforcement Officers	( A )	
	Airline Trips:	46	\$8,576.41
	Hotel Reserv:	108	\$12,138.71
	Car Rentals:	7	\$608.60
			<hr/>
			\$21,323.72

409	Commission on Jail Standards	( A )	
	Airline Trips:	54	\$8,748.00
	Hotel Reserv:	199	\$15,861.90
	Car Rentals:	33	\$3,097.94
			<hr/>
			\$27,707.84
410	Criminal Justice Policy Council	( A )	
	Airline Trips:	65	\$10,477.00
	Hotel Reserv:	0	\$0.00
	Car Rentals:	0	\$0.00
			<hr/>
			\$10,477.00
411	Texas Commission on Fire Protection	( A )	
	Airline Trips:	63	\$13,473.50
	Hotel Reserv:	1,084	\$78,169.68
	Car Rentals:	55	\$5,545.76
			<hr/>
			\$97,188.94
450	Savings and Loan Department	( A )	
	Airline Trips:	20	\$5,983.00
	Hotel Reserv:	11	\$1,284.28
	Car Rentals:	4	\$274.98
			<hr/>
			\$7,542.26
451	Department of Banking	( A )	
	Airline Trips:	493	\$94,742.99
	Hotel Reserv:	2,117	\$256,302.44
	Car Rentals:	89	\$9,399.66
			<hr/>
			\$360,445.09
452	TX Dept. of Licensing & Regulations	( A )	
	Airline Trips:	197	\$46,807.50
	Hotel Reserv:	847	\$68,496.74
	Car Rentals:	109	\$11,917.97
			<hr/>
			\$127,222.21
453	Texas Worker's Compensation Commis	( A )	
	Airline Trips:	1,168	\$195,820.38
	Hotel Reserv:	1,313	\$114,297.47
	Car Rentals:	277	\$23,496.55
			<hr/>
			\$333,614.40
454	Texas Department of Insurance	( A )	
	Airline Trips:	918	\$230,474.09
	Hotel Reserv:	2,118	\$392,173.90
	Car Rentals:	366	\$36,823.58
			<hr/>
			\$659,471.57

455	Railroad Commission of Texas	( A )	
	Airline Trips:	444	\$76,762.10
	Hotel Reserv:	149	\$15,234.29
	Car Rentals:	21	\$1,603.86
			<hr/>
			\$93,600.25
456	TX State Board of Plumbing Examiners	( A )	
	Airline Trips:	25	\$4,830.82
	Hotel Reserv:	125	\$12,245.03
	Car Rentals:	3	\$303.81
			<hr/>
			\$17,379.66
457	State Board of Public Accountancy	( A )	
	Airline Trips:	89	\$11,641.60
	Hotel Reserv:	57	\$8,488.23
	Car Rentals:	5	\$400.28
			<hr/>
			\$20,530.11
458	Alcoholic Beverage Commission	( A )	
	Airline Trips:	155	\$24,789.70
	Hotel Reserv:	136	\$10,257.36
	Car Rentals:	7	\$354.90
			<hr/>
			\$35,401.96
459	Board of Architectural Examiners	( A )	
	Airline Trips:	56	\$12,221.00
	Hotel Reserv:	30	\$3,241.28
	Car Rentals:	7	\$483.71
			<hr/>
			\$15,945.99
460	Brd of Reg/Professional Engineers	( A )	
	Airline Trips:	65	\$11,265.00
	Hotel Reserv:	66	\$10,909.19
	Car Rentals:	17	\$1,343.31
			<hr/>
			\$23,517.50
464	Board of Land Surveying	( A )	
	Airline Trips:	37	\$8,178.82
	Hotel Reserv:	64	\$10,989.73
	Car Rentals:	27	\$2,653.93
			<hr/>
			\$21,822.48
465	Texas Department of Commerce	( A )	
	Airline Trips:	1,534	\$285,436.86
	Hotel Reserv:	1,346	\$151,871.04
	Car Rentals:	119	\$5,855.83
			<hr/>
			\$443,163.73

466	Office of Consumer Credit Comm.	( A )	
	Airline Trips:	93	\$16,026.74
	Hotel Reserv:	258	\$35,025.06
	Car Rentals:	55	\$8,191.67
			<hr/>
			\$59,243.47
467	Private Inv.&Private Sec. Agencies	( A )	
	Airline Trips:	69	\$9,125.00
	Hotel Reserv:	48	\$3,331.14
	Car Rentals:	23	\$1,883.64
			<hr/>
			\$14,339.78
469	Credit Union Department	( A )	
	Airline Trips:	191	\$25,560.12
	Hotel Reserv:	309	\$38,974.03
	Car Rentals:	37	\$4,207.61
			<hr/>
			\$68,741.76
472	Structural Pest Control Board	( R )	
	Airline Trips:	98	\$7,034.00
	Hotel Reserv:	246	\$15,238.50
	Car Rentals:	1	\$79.53
			<hr/>
			\$22,352.03
473	Public Utility Commission of Texas	( A )	
	Airline Trips:	267	\$75,321.76
	Hotel Reserv:	0	\$0.00
	Car Rentals:	0	\$0.00
			<hr/>
			\$75,321.76
474	Polygraph Examiners Board	( R )	
	Airline Trips:	6	\$858.00
	Hotel Reserv:	28	\$2,799.07
	Car Rentals:	1	\$72.60
			<hr/>
			\$3,729.67
475	Office of Public Utility Counsel	( C )	
	Airline Trips:	38	\$11,248.00
	Hotel Reserv:	13	\$4,605.41
	Car Rentals:	3	\$145.94
			<hr/>
			\$15,999.35
476	Texas Racing Commission	( A )	
	Airline Trips:	87	\$14,118.20
	Hotel Reserv:	115	\$10,584.52
	Car Rentals:	72	\$9,222.36
			<hr/>
			\$33,925.08

477	Adv. Comm./St. Emerg. Communication ( A )		
	Airline Trips: 208		\$31,568.21
	Hotel Reserv: 85		\$7,088.75
	Car Rentals: 19		\$861.24
			<hr/>
			\$39,518.20
478	Worker's Comp Research Center ( A )		
	Airline Trips: 3		\$674.00
	Hotel Reserv: 0		\$0.00
	Car Rentals: 0		\$0.00
			<hr/>
			\$674.00
501	Texas Department of Health ( A )		
	Airline Trips: 6,798		\$1,187,594.27
	Hotel Reserv: 18,451		\$1,563,023.86
	Car Rentals: 2,212		\$195,089.77
			<hr/>
			\$2,945,707.90
502	State of Board of Barber Examiners ( R )		
	Airline Trips: 38		\$6,685.00
	Hotel Reserv: 41		\$18,898.00
	Car Rentals: 0		\$0.00
			<hr/>
			\$25,583.00
503	TX State Brd. of Medical Examiners ( A )		
	Airline Trips: 174		\$27,317.69
	Hotel Reserv: 293		\$21,083.14
	Car Rentals: 93		\$8,604.21
			<hr/>
			\$57,005.04
504	State Board of Dental Examiners ( A )		
	Airline Trips: 99		\$13,306.45
	Hotel Reserv: 195		\$29,156.82
	Car Rentals: 36		\$3,065.15
			<hr/>
			\$45,528.42
505	Texas Cosmetology Commission ( A )		
	Airline Trips: 69		\$9,985.75
	Hotel Reserv: 246		\$26,777.93
	Car Rentals: 21		\$1,642.71
			<hr/>
			\$38,406.39
506	U. T. System Cancer Center ( R )		
	Airline Trips: 4,918		\$1,728,823.14
	Hotel Reserv: 4,254		\$1,256,723.35
	Car Rentals: 778		\$98,423.56
			<hr/>
			\$3,083,970.05

507	Board of Nurse Examiners	( A )	
	Airline Trips: 186		\$27,397.02
	Hotel Reserv: 201		\$20,084.53
	Car Rentals: 80		\$4,857.70
			<hr/>
			\$52,339.25
508	Board of Chiropractic Examiners	( A )	
	Airline Trips: 33		\$5,745.00
	Hotel Reserv: 41		\$5,241.98
	Car Rentals: 21		\$689.35
			<hr/>
			\$11,676.33
509	Board of Examiners of Hearing Aids	( R )	
	Airline Trips: 22		\$1,815.20
	Hotel Reserv: 23		\$2,407.90
	Car Rentals: 2		\$81.38
			<hr/>
			\$4,304.48
NOTE #1	511 Board of Vocational Nurse Examiners	( A )	
	Airline Trips: 14		-\$33,413.62
	Hotel Reserv: 64		\$4,560.84
	Car Rentals: 1		\$142.24
			<hr/>
			-\$28,710.54
512	State Board of Podiatry Examiners	( R )	
	Airline Trips: 4		\$478.00
	Hotel Reserv: 6		\$335.00
	Car Rentals: 0		\$0.00
			<hr/>
			\$813.00
513	Texas Funeral Service Commission	( A )	
	Airline Trips: 31		\$5,383.00
	Hotel Reserv: 172		\$10,692.89
	Car Rentals: 23		\$1,952.79
			<hr/>
			\$18,028.68
514	Texas Optometry Board	( R )	
	Airline Trips: 26		\$3,734.08
	Hotel Reserv: 52		\$4,263.65
	Car Rentals: 2		\$321.24
			<hr/>
			\$8,318.97
515	Texas State Board of Pharmacy	( C )	
	Airline Trips: 84		\$13,246.50
	Hotel Reserv: 253		\$26,881.67
	Car Rentals: 17		\$2,484.52
			<hr/>
			\$42,612.69

517	TX Comm. on Alcohol & Drug Abuse	( A )	
	Airline Trips: 995		\$158,446.24
	Hotel Reserv: 1,000		\$89,230.80
	Car Rentals: 77		\$6,570.21
			<hr/>
			\$254,247.25
NOTE 519	Texas Air Control Board	( R )	
#2	Airline Trips: 0		\$0.00
	Hotel Reserv: 0		\$0.00
	Car Rentals: 0		\$0.00
			<hr/>
			\$0.00
520	State Brd of Examiners/Psychologists	( C )	
	Airline Trips: 54		\$8,131.00
	Hotel Reserv: 30		\$5,430.33
	Car Rentals: 6		\$479.40
			<hr/>
			\$14,040.73
522	Board of Physical Therapy Examiners	( R )	
	Airline Trips: 10		\$1,459.00
	Hotel Reserv: 16		\$1,155.00
	Car Rentals: 6		\$297.52
			<hr/>
			\$2,911.52
524	Brd of Licensure Nursing Home Admin.	( A )	
	Airline Trips: 61		\$11,075.00
	Hotel Reserv: 25		\$2,533.83
	Car Rentals: 5		\$282.60
			<hr/>
			\$13,891.43
526	TX Low Radioactive Waste Disp Auth	( A )	
	Airline Trips: 188		\$46,620.90
	Hotel Reserv: 200		\$17,726.25
	Car Rentals: 59		\$4,768.93
			<hr/>
			\$69,116.08
527	Texas Cancer Council	( R )	
	Airline Trips: 90		\$15,583.00
	Hotel Reserv: 56		\$5,401.25
	Car Rentals: 13		\$658.98
			<hr/>
			\$21,643.23
528	State Anatomical Board	( R )	
	Airline Trips: 4		\$463.00
	Hotel Reserv: 2		\$341.12
	Car Rentals: 2		\$92.61
			<hr/>
			\$896.73

529	Health & Human Services Commission	( C )	
	Airline Trips:	123	\$21,433.70
	Hotel Reserv:	84	\$9,156.61
	Car Rentals:	43	\$2,339.29
			<hr/>
			\$32,929.60
530	Dept. of Protective/Regulatory Serv.	( A )	
	Airline Trips:	6,130	\$1,094,163.92
	Hotel Reserv:	1,077	\$96,009.79
	Car Rentals:	80	\$4,472.96
			<hr/>
			\$1,194,646.67
551	Department of Agriculture	( A )	
	Airline Trips:	1,062	\$208,276.52
	Hotel Reserv:	1,675	\$126,700.47
	Car Rentals:	105	\$8,007.15
			<hr/>
			\$342,984.14
553	Agricultural Resources Protect Auth	( R )	
	Airline Trips:	1	\$158.00
	Hotel Reserv:	0	\$0.00
	Car Rentals:	0	\$0.00
			<hr/>
			\$158.00
554	Texas Animal Health Commission	( A )	
	Airline Trips:	202	\$39,298.36
	Hotel Reserv:	234	\$12,072.38
	Car Rentals:	7	\$1,092.42
			<hr/>
			\$52,463.16
577	TX Animal Damage Control Service	( R )	
	Airline Trips:	0	\$0.00
	Hotel Reserv:	4	\$383.95
	Car Rentals:	0	\$0.00
			<hr/>
			\$383.95
578	TX Brd of Veterinary Med Examiners	( A )	
	Airline Trips:	11	\$2,046.00
	Hotel Reserv:	18	\$2,122.71
	Car Rentals:	0	\$0.00
			<hr/>
			\$4,168.71
580	Texas Water Development Board	( A )	
	Airline Trips:	585	\$101,489.40
	Hotel Reserv:	116	\$10,964.07
	Car Rentals:	12	\$1,043.24
			<hr/>
			\$113,496.71



582	Natural Resources Conservation Comm. ( A )		
	Airline Trips: 5,678		\$1,034,404.91
	Hotel Reserv: 5,081		\$441,573.43
	Car Rentals: 452		\$37,579.63
			<hr/>
			\$1,513,557.97
592	Soil and Water Conservation Board ( A )		
	Airline Trips: 74		\$14,735.56
	Hotel Reserv: 474		\$33,414.37
	Car Rentals: 24		\$1,758.92
			<hr/>
			\$49,908.85
601	Department of Transportation ( A )		
	Airline Trips: 5,170		\$1,067,388.43
	Hotel Reserv: 15,195		\$1,445,528.75
	Car Rentals: 1,362		\$138,360.95
			<hr/>
			\$2,651,278.13
602	Texas Turnpike Authority ( R )		
	Airline Trips: 189		\$25,366.15
	Hotel Reserv: 53		\$14,788.42
	Car Rentals: 12		\$861.33
			<hr/>
			\$41,015.90
606	TX High-Speed Rail Authority ( A )		
	Airline Trips: 33		\$4,424.37
	Hotel Reserv: 16		\$3,228.99
	Car Rentals: 2		\$169.48
			<hr/>
			\$7,822.84
650	San Antonio State School ( A )		
	Airline Trips: 17		\$2,730.00
	Hotel Reserv: 84		\$8,550.67
	Car Rentals: 7		\$485.83
			<hr/>
			\$11,766.50
NOTE 651	Corsicana State Home-See TYC ( R )		
#11	Airline Trips: 0		\$0.00
	Hotel Reserv: 0		\$0.00
	Car Rentals: 0		\$0.00
			<hr/>
			\$0.00
NOTE 654	Brownwood State School-See TYC ( R )		
#11	Airline Trips: 0		\$0.00
	Hotel Reserv: 0		\$0.00
	Car Rentals: 0		\$0.00
			<hr/>
			\$0.00

655	Texas Department of MHMR	( A )	
	Airline Trips: 2,103		\$339,846.74
	Hotel Reserv: 3,621		\$325,601.62
	Car Rentals: 1,139		\$92,529.85
			<hr/>
			\$757,978.21
NOTE 6551	MHMR/Genetics Screening	( R )	
#3	Airline Trips: 0		\$0.00
	Hotel Reserv: 0		\$0.00
	Car Rentals: 0		\$0.00
			<hr/>
			\$0.00
656	Vernon State Hospital	( A )	
	Airline Trips: 75		\$15,632.50
	Hotel Reserv: 164		\$16,991.46
	Car Rentals: 23		\$2,073.47
			<hr/>
			\$34,697.43
657	Amarillo State Center	( A )	
	Airline Trips: 145		\$30,573.00
	Hotel Reserv: 167		\$14,148.49
	Car Rentals: 45		\$3,735.37
			<hr/>
			\$48,456.86
658	Beaumont State Center	( A )	
	Airline Trips: 20		\$4,785.00
	Hotel Reserv: 323		\$22,173.31
	Car Rentals: 23		\$1,902.70
			<hr/>
			\$28,861.01
659	Rio Grande State Center	( A )	
	Airline Trips: 79		\$10,503.00
	Hotel Reserv: 431		\$26,661.71
	Car Rentals: 30		\$2,007.12
			<hr/>
			\$39,171.83
660	Denton State School	( A )	
	Airline Trips: 94		\$13,361.00
	Hotel Reserv: 108		\$9,145.15
	Car Rentals: 9		\$850.91
			<hr/>
			\$23,357.06
661	El Paso State Center	( A )	
	Airline Trips: 99		\$16,094.00
	Hotel Reserv: 133		\$5,921.60
	Car Rentals: 15		\$970.78
			<hr/>
			\$22,986.38

665	Texas Juvenile Probation Commission	( A )	
	Airline Trips:	104	\$15,884.26
	Hotel Reserv:	275	\$21,193.47
	Car Rentals:	42	\$3,545.98
			<hr/>
			\$40,623.71
667	Fort Worth State School	( A )	
	Airline Trips:	84	\$12,513.51
	Hotel Reserv:	44	\$2,540.37
	Car Rentals:	2	\$188.65
			<hr/>
			\$15,242.53
668	Richmond State School	( A )	
	Airline Trips:	38	\$9,055.00
	Hotel Reserv:	146	\$15,274.03
	Car Rentals:	7	\$480.62
			<hr/>
			\$24,809.65
669	Lufkin State School	( A )	
	Airline Trips:	5	\$947.00
	Hotel Reserv:	108	\$10,238.22
	Car Rentals:	1	\$45.16
			<hr/>
			\$11,230.38
670	Corpus Christi State School	( A )	
	Airline Trips:	35	\$5,637.00
	Hotel Reserv:	387	\$25,595.94
	Car Rentals:	4	\$512.35
			<hr/>
			\$31,745.29
671	San Angelo State School	( A )	
	Airline Trips:	23	\$4,341.00
	Hotel Reserv:	310	\$24,422.19
	Car Rentals:	1	\$159.58
			<hr/>
			\$28,922.77
672	Mexia State School	( A )	
	Airline Trips:	14	\$3,282.50
	Hotel Reserv:	338	\$22,108.26
	Car Rentals:	2	\$377.86
			<hr/>
			\$25,768.62
673	San Antonio State Chest Hospital	( A )	
	Airline Trips:	17	\$4,305.00
	Hotel Reserv:	0	\$0.00
	Car Rentals:	2	\$99.17
			<hr/>
			\$4,404.17

674	Kerrville State Hospital	( A )	
	Airline Trips: 38		\$7,915.50
	Hotel Reserv: 502		\$33,450.83
	Car Rentals: 7		\$622.04
			<hr/>
			\$41,988.37
675	Travis State School	( A )	
	Airline Trips: 53		\$9,693.00
	Hotel Reserv: 60		\$5,470.47
	Car Rentals: 3		\$564.44
			<hr/>
			\$15,727.91
676	Abilene State School	( A )	
	Airline Trips: 182		\$42,137.44
	Hotel Reserv: 767		\$54,930.36
	Car Rentals: 62		\$5,724.14
			<hr/>
			\$102,791.94
677	Austin State Hospital	( A )	
	Airline Trips: 49		\$9,137.23
	Hotel Reserv: 22		\$1,381.68
	Car Rentals: 0		\$0.00
			<hr/>
			\$10,518.91
678	Austin State School	( A )	
	Airline Trips: 69		\$16,431.27
	Hotel Reserv: 66		\$8,782.75
	Car Rentals: 9		\$890.11
			<hr/>
			\$26,104.13
679	Rusk State Hospital	( A )	
	Airline Trips: 71		\$18,325.00
	Hotel Reserv: 254		\$24,060.58
	Car Rentals: 4		\$544.40
			<hr/>
			\$42,929.98
680	Waco Center for Youth	( A )	
	Airline Trips: 5		\$1,179.00
	Hotel Reserv: 102		\$8,440.75
	Car Rentals: 1		\$88.74
			<hr/>
			\$9,708.49
681	San Antonio State Hospital	( A )	
	Airline Trips: 46		\$8,363.00
	Hotel Reserv: 295		\$19,434.57
	Car Rentals: 9		\$488.80
			<hr/>
			\$28,286.37

682	Terrell State Hospital	( A )	
	Airline Trips: 227		\$33,054.07
	Hotel Reserv: 315		\$27,409.97
	Car Rentals: 34		\$2,312.41
			<hr/>
			\$62,776.45
683	Wichita Falls State Hospital	( A )	
	Airline Trips: 36		\$9,802.09
	Hotel Reserv: 339		\$30,878.80
	Car Rentals: 2		\$210.71
			<hr/>
			\$40,891.60
684	South Texas State Chest Hospital	( A )	
	Airline Trips: 65		\$8,691.33
	Hotel Reserv: 37		\$5,065.80
	Car Rentals: 8		\$508.49
			<hr/>
			\$14,265.62
686	Big Spring State Hospital	( A )	
	Airline Trips: 264		\$29,215.00
	Hotel Reserv: 533		\$38,417.73
	Car Rentals: 72		\$4,345.14
			<hr/>
			\$71,977.87
687	Lubbock State School	( A )	
	Airline Trips: 160		\$21,272.06
	Hotel Reserv: 340		\$15,958.76
	Car Rentals: 12		\$864.03
			<hr/>
			\$38,094.85
688	Brenham State School	( A )	
	Airline Trips: 34		\$5,245.40
	Hotel Reserv: 147		\$15,544.36
	Car Rentals: 5		\$372.20
			<hr/>
			\$21,161.96
NOTE #11 689	Giddings State School-See TYC	( R )	
	Airline Trips: 0		\$0.00
	Hotel Reserv: 0		\$0.00
	Car Rentals: 0		\$0.00
			<hr/>
			\$0.00
NOTE #11 690	West TX Children's Home-See TYC	( R )	
	Airline Trips: 0		\$0.00
	Hotel Reserv: 0		\$0.00
	Car Rentals: 0		\$0.00
			<hr/>
			\$0.00

NOTE 692	Gainesville State School-See TYC	( R )	
#11	Airline Trips:	0	\$0.00
	Hotel Reserv:	0	\$0.00
	Car Rentals:	0	\$0.00
			<hr/>
			\$0.00
NOTE 693	Crockett State School-See TYC	( R )	
#11	Airline Trips:	0	\$0.00
	Hotel Reserv:	0	\$0.00
	Car Rentals:	0	\$0.00
			<hr/>
			\$0.00
694	Texas Youth Commission	( A )	
	Airline Trips:	1,050	\$159,107.15
	Hotel Reserv:	1,804	\$127,718.21
	Car Rentals:	529	\$36,516.71
			<hr/>
			\$323,342.07
696	TX Dept of Crim Justice/Inst Div.	( A )	
	Airline Trips:	2,199	\$967,896.62
	Hotel Reserv:	12,043	\$591,556.20
	Car Rentals:	409	\$29,579.33
			<hr/>
			\$1,589,032.15
696A	Board of Pardons & Paroles	( A )	
	Airline Trips:	904	\$144,915.17
	Hotel Reserv:	3,066	\$249,390.84
	Car Rentals:	450	\$41,478.40
			<hr/>
			\$435,784.41
NOTE 696B	TDCJ-Community Justice Assist Div	( R )	
#4	Airline Trips:	0	\$0.00
	Hotel Reserv:	0	\$0.00
	Car Rentals:	0	\$0.00
			<hr/>
			\$0.00
NOTE 696C	TX Council/Offenders w/Mental Impair	( R )	
#5	Airline Trips:	0	\$0.00
	Hotel Reserv:	0	\$0.00
	Car Rentals:	0	\$0.00
			<hr/>
			\$0.00
699	Laredo State Center	( A )	
	Airline Trips:	28	\$8,545.00
	Hotel Reserv:	105	\$4,587.71
	Car Rentals:	7	\$293.68
			<hr/>
			\$13,426.39

701	Texas Central Education Agency	( A )	
	Airline Trips: 2,699		\$516,521.30
	Hotel Reserv: 3,945		\$459,684.50
	Car Rentals: 1,212		\$122,996.11
			<hr/>
			\$1,099,201.91
NOTE #6	702 TX Council on Vocational Education	( R )	
	Airline Trips: 0		\$0.00
	Hotel Reserv: 0		\$0.00
	Car Rentals: 0		\$0.00
			<hr/>
			\$0.00
NOTE #7	710 TX A&M Univ. System & Components	( R )	
	Airline Trips: 0		\$0.00
	Hotel Reserv: 0		\$0.00
	Car Rentals: 0		\$0.00
			<hr/>
			\$0.00
711	Texas A&M University	( A )	
	Airline Trips: 11,878		\$4,058,003.89
	Hotel Reserv: 24,632		\$2,947,308.52
	Car Rentals: 3,988		\$484,450.31
			<hr/>
			\$7,489,762.72
713	Tarleton State University	( R )	
	Airline Trips: 316		\$61,159.66
	Hotel Reserv: 854		\$85,022.17
	Car Rentals: 60		\$9,512.90
			<hr/>
			\$155,694.73
NOTE #8	714 University of Texas at Arlington	( R )	
	Airline Trips: 1,770		\$588,456.10
	Hotel Reserv: 2,303		\$310,958.58
	Car Rentals: 0		\$0.00
			<hr/>
			\$899,414.68
715	Prairie View A&M University	( R )	
	Airline Trips: 210		\$73,411.26
	Hotel Reserv: 486		\$100,988.24
	Car Rentals: 96		\$16,703.02
			<hr/>
			\$191,102.52
717	Texas Southern University	( A )	
	Airline Trips: 125		\$30,498.56
	Hotel Reserv: 95		\$15,369.42
	Car Rentals: 18		\$1,750.93
			<hr/>
			\$47,618.91

718	Texas A&M University at Galveston	( R )	
	Airline Trips:	95	\$35,907.53
	Hotel Reserv:	234	\$28,999.91
	Car Rentals:	37	\$7,141.97
			<hr/>
			\$72,049.41
719	Texas State Technical College	( A )	
	Airline Trips:	92	\$17,641.00
	Hotel Reserv:	248	\$25,924.56
	Car Rentals:	31	\$3,179.35
			<hr/>
			\$46,744.91
7191	TX State Technical College-Waco	( A )	
	Airline Trips:	262	\$71,255.14
	Hotel Reserv:	767	\$80,942.92
	Car Rentals:	78	\$8,881.09
			<hr/>
			\$161,079.15
7192	TX State Technical College-Harlingen	( A )	
	Airline Trips:	309	\$56,249.04
	Hotel Reserv:	486	\$44,969.97
	Car Rentals:	73	\$7,857.20
			<hr/>
			\$109,076.21
7193	TX State Technical College-Amarillo	( A )	
	Airline Trips:	201	\$39,017.66
	Hotel Reserv:	259	\$26,384.24
	Car Rentals:	90	\$9,463.30
			<hr/>
			\$74,865.20
7194	TX State Technicl College-Sweetwater	( A )	
	Airline Trips:	93	\$14,818.00
	Hotel Reserv:	572	\$35,144.93
	Car Rentals:	48	\$4,301.94
			<hr/>
			\$54,264.87
720	University of Texas System	( R )	
	Airline Trips:	2,245	\$418,683.54
	Hotel Reserv:	1,065	\$157,616.70
	Car Rentals:	1,142	\$73,850.98
			<hr/>
			\$650,151.22
721	University of Texas at Austin	( R )	
	Airline Trips:	31,965	\$5,564,984.00
	Hotel Reserv:	11,271	\$2,128,451.00
	Car Rentals:	6,965	\$627,462.00
			<hr/>
			\$8,320,897.00



723	UT Medical Branch - Galveston	( R )	
	Airline Trips: 4,253		\$1,228,728.12
	Hotel Reserv: 3,583		\$1,047,201.95
	Car Rentals: 827		\$96,610.06
			<hr/>
			\$2,372,540.13
724	University of Texas at El Paso	( R )	
	Airline Trips: 3,347		\$885,747.00
	Hotel Reserv: 1,551		\$304,227.00
	Car Rentals: 595		\$77,029.00
			<hr/>
			\$1,267,003.00
729	UT Southwestern Medical Ctr/Dallas	( R )	
	Airline Trips: 2,901		\$1,046,305.24
	Hotel Reserv: 2,797		\$876,282.48
	Car Rentals: 760		\$81,313.95
			<hr/>
			\$2,003,901.67
730	University of Houston	( A )	
	Airline Trips: 5,349		\$1,597,201.54
	Hotel Reserv: 3,023		\$530,953.51
	Car Rentals: 1,011		\$112,523.03
			<hr/>
			\$2,240,678.08
731	Texas Woman's University	( A )	
	Airline Trips: 914		\$166,664.72
	Hotel Reserv: 241		\$31,176.98
	Car Rentals: 59		\$5,018.96
			<hr/>
			\$202,860.66
732	Texas A&I University	( A )	
	Airline Trips: 987		\$264,889.51
	Hotel Reserv: 1,167		\$131,388.16
	Car Rentals: 170		\$17,491.72
			<hr/>
			\$413,769.39
733	Texas Tech University	( R )	
	Airline Trips: 3,240		\$758,681.79
	Hotel Reserv: 4,672		\$557,378.69
	Car Rentals: 1,166		\$110,270.14
			<hr/>
			\$1,426,330.62
734	Lamar University - Beaumont	( A )	
	Airline Trips: 441		\$109,974.79
	Hotel Reserv: 1,166		\$133,509.83
	Car Rentals: 197		\$22,845.70
			<hr/>
			\$266,330.32

735	Midwestern State University	( R )	
	Airline Trips:	185	\$46,335.46
	Hotel Reserv:	501	\$74,497.92
	Car Rentals:	56	\$6,584.02
			<hr/>
			\$127,417.40
736	UT Pan American University	( A )	
	Airline Trips:	1,586	\$378,408.29
	Hotel Reserv:	822	\$96,518.39
	Car Rentals:	103	\$10,256.31
			<hr/>
			\$485,182.99
737	Angelo State University	( R )	
	Airline Trips:	103	\$34,988.43
	Hotel Reserv:	340	\$45,614.64
	Car Rentals:	11	\$1,770.29
			<hr/>
			\$82,373.36
738	University of Texas at Dallas	( R )	
	Airline Trips:	1,222	\$329,632.55
	Hotel Reserv:	663	\$114,707.29
	Car Rentals:	178	\$22,317.45
			<hr/>
			\$466,657.29
739	Texas Tech Univ Health Science Centr	( R )	
	Airline Trips:	5,226	\$736,508.62
	Hotel Reserv:	2,851	\$556,097.94
	Car Rentals:	958	\$84,921.95
			<hr/>
			\$1,377,528.51
742	Univ. of Tex. of the Permian Basin	( R )	
	Airline Trips:	231	\$43,736.34
	Hotel Reserv:	181	\$24,115.45
	Car Rentals:	71	\$5,462.80
			<hr/>
			\$73,314.59
743	Univ. of Texas at San Antonio	( R )	
	Airline Trips:	661	\$176,735.55
	Hotel Reserv:	662	\$96,225.65
	Car Rentals:	170	\$14,312.86
			<hr/>
			\$287,274.06
744	UT Health Science Center-Houston	( R )	
	Airline Trips:	2,135	\$668,098.42
	Hotel Reserv:	1,877	\$628,357.87
	Car Rentals:	341	\$35,551.32
			<hr/>
			\$1,332,007.61

745	UT Health Science Center-San Antonio ( R )		
	Airline Trips: 2,911		\$953,644.14
	Hotel Reserv: 695		\$738,250.80
	Car Rentals: 217		\$75,161.76
			<hr/>
			\$1,767,056.70
747	University of Texas-Brownsville ( A )		
	Airline Trips: 516		\$86,814.86
	Hotel Reserv: 186		\$16,185.80
	Car Rentals: 32		\$3,122.49
			<hr/>
			\$106,123.15
750	University of Texas at Tyler ( R )		
	Airline Trips: 190		\$46,419.40
	Hotel Reserv: 345		\$38,722.94
	Car Rentals: 23		\$2,263.86
			<hr/>
			\$87,406.20
751	East Texas State University ( R )		
	Airline Trips: 660		\$117,021.78
	Hotel Reserv: 764		\$103,170.97
	Car Rentals: 146		\$14,000.41
			<hr/>
			\$234,193.16
752	University of North Texas ( R )		
	Airline Trips: 2,313		\$572,767.67
	Hotel Reserv: 2,524		\$389,433.93
	Car Rentals: 522		\$55,575.48
			<hr/>
			\$1,017,777.08
753	Sam Houston State University ( R )		
	Airline Trips: 412		\$103,296.50
	Hotel Reserv: 1,010		\$116,267.12
	Car Rentals: 118		\$18,641.07
			<hr/>
			\$238,204.69
754	Southwest Texas State University ( R )		
	Airline Trips: 1,416		\$358,640.05
	Hotel Reserv: 2,683		\$256,388.78
	Car Rentals: 270		\$33,788.98
			<hr/>
			\$648,817.81
755	Stephen F. Austin State University ( R )		
	Airline Trips: 233		\$630,532.40
	Hotel Reserv: 1,183		\$132,419.67
	Car Rentals: 70		\$7,874.30
			<hr/>
			\$770,826.37

756	Sul Ross State University	( R )	
	Airline Trips:	146	\$69,088.50
	Hotel Reserv:	447	\$109,629.84
	Car Rentals:	27	\$4,138.99
			<hr/>
			\$182,857.33
757	West Texas A&M University	( A )	
	Airline Trips:	556	\$108,510.76
	Hotel Reserv:	718	\$112,530.77
	Car Rentals:	181	\$19,800.52
			<hr/>
			\$240,842.05
758	Texas State Univ. Board of Regents	( R )	
	Airline Trips:	26	\$4,522.09
	Hotel Reserv:	81	\$4,809.00
	Car Rentals:	3	\$284.34
			<hr/>
			\$9,615.43
759	Univ of Houston at Clear Lake City	( R )	
	Airline Trips:	682	\$201,206.58
	Hotel Reserv:	571	\$110,990.51
	Car Rentals:	171	\$19,425.89
			<hr/>
			\$331,622.98
760	Corpus Christi State University	( R )	
	Airline Trips:	176	\$41,002.50
	Hotel Reserv:	372	\$40,541.84
	Car Rentals:	58	\$5,492.21
			<hr/>
			\$87,036.55
761	Laredo State University	( A )	
	Airline Trips:	239	\$76,109.55
	Hotel Reserv:	401	\$53,180.90
	Car Rentals:	56	\$6,049.66
			<hr/>
			\$135,340.11
763	Texas College - Osteopathic Medicine	( R )	
	Airline Trips:	1,288	\$218,250.82
	Hotel Reserv:	908	\$175,579.15
	Car Rentals:	257	\$28,652.68
			<hr/>
			\$422,482.65
764	East Texas State Univ. at Texarkana	( R )	
	Airline Trips:	65	\$17,249.00
	Hotel Reserv:	102	\$15,179.32
	Car Rentals:	28	\$1,684.20
			<hr/>
			\$34,112.52

765	University of Houston - Victoria	( R )	
	Airline Trips:	56	\$15,343.89
	Hotel Reserv:	15	\$1,946.00
	Car Rentals:	2	\$115.74
			<hr/>
			\$17,405.63
767	SW Collegiate Institute for the Deaf	( R )	
	Airline Trips:	45	\$7,737.00
	Hotel Reserv:	48	\$4,403.67
	Car Rentals:	23	\$2,174.37
			<hr/>
			\$14,315.04
771	Texas School For The Blind	( A )	
	Airline Trips:	293	\$52,928.46
	Hotel Reserv:	293	\$20,507.59
	Car Rentals:	15	\$1,386.43
			<hr/>
			\$74,822.48
772	Texas School for the Deaf	( A )	
	Airline Trips:	426	\$66,477.12
	Hotel Reserv:	0	\$0.00
	Car Rentals:	0	\$0.00
			<hr/>
			\$66,477.12
781	Texas Higher Edu Coordinating Brd	( A )	
	Airline Trips:	512	\$100,404.39
	Hotel Reserv:	528	\$54,423.21
	Car Rentals:	232	\$18,166.46
			<hr/>
			\$172,994.06
783	University of Houston System	( A )	
	Airline Trips:	533	\$121,829.19
	Hotel Reserv:	205	\$28,480.16
	Car Rentals:	83	\$7,637.21
			<hr/>
			\$157,946.56
784	University of Houston-Downtown	( A )	
	Airline Trips:	386	\$92,441.32
	Hotel Reserv:	176	\$30,754.46
	Car Rentals:	42	\$4,571.40
			<hr/>
			\$127,767.18
785	Univ of Texas Health Center at Tyler	( A )	
	Airline Trips:	58	\$15,034.83
	Hotel Reserv:	368	\$54,141.67
	Car Rentals:	100	\$8,861.78
			<hr/>
			\$78,038.28

786	Lamar University System	( A )	
	Airline Trips: 32		\$8,593.30
	Hotel Reserv: 66		\$8,260.89
	Car Rentals: 15		\$937.70
			<hr/>
			\$17,791.89
787	Lamar University at Orange	( A )	
	Airline Trips: 65		\$17,498.50
	Hotel Reserv: 123		\$13,933.57
	Car Rentals: 24		\$1,622.28
			<hr/>
			\$33,054.35
788	Lamar University at Port Arthur	( A )	
	Airline Trips: 56		\$11,549.78
	Hotel Reserv: 129		\$16,449.92
	Car Rentals: 16		\$1,796.44
			<hr/>
			\$29,796.14
802	Parks and Wildlife Department	( A )	
	Airline Trips: 920		\$207,172.35
	Hotel Reserv: 7,705		\$495,807.79
	Car Rentals: 305		\$29,243.40
			<hr/>
			\$732,223.54
808	Texas Historical Commission	( A )	
	Airline Trips: 258		\$38,354.44
	Hotel Reserv: 206		\$17,881.84
	Car Rentals: 71		\$5,607.60
			<hr/>
			\$61,843.88
809	State Preservation Board	( A )	
	Airline Trips: 25		\$7,022.95
	Hotel Reserv: 0		\$0.00
	Car Rentals: 0		\$0.00
			<hr/>
			\$7,022.95
813	Texas Commission on the Arts	( R )	
	Airline Trips: 77		\$7,530.00
	Hotel Reserv: 43		\$4,668.04
	Car Rentals: 13		\$1,353.23
			<hr/>
			\$13,551.27
NOTE 853 #9	Texas Grain Sorghum Producers Brd.	( R )	
	Airline Trips: 0		\$0.00
	Hotel Reserv: 0		\$0.00
	Car Rentals: 0		\$0.00
			<hr/>
			\$0.00

904	Texas Food & Fibers Commission	( R )	
	Airline Trips:	60	\$4,294.20
	Hotel Reserv:	19	\$1,688.00
	Car Rentals:	24	\$1,846.10
			<hr/>
			\$7,828.30
NOTE 905	Texas Surplus Property	( R )	
#10	Airline Trips:	0	\$0.00
	Hotel Reserv:	0	\$0.00
	Car Rentals:	0	\$0.00
			<hr/>
			\$0.00
**	Sub-Total for AMEX		
	Airline Trips:	108,830	\$23,142,048.96
	Hotel Reserv:	182,981	\$17,410,774.95
	Car Rentals:	27,146	\$2,658,355.87
			<hr/>
			\$43,211,179.78
**	Sub-Total for Reporting Agencies		
	Airline Trips:	76,458	\$17,892,980.24
	Hotel Reserv:	52,904	\$10,774,578.76
	Car Rentals:	16,303	\$1,652,183.71
			<hr/>
			\$30,319,742.71
**	Sub-Total for Combination Agencies		
	Airline Trips:	1,298	\$334,350.51
	Hotel Reserv:	1,735	\$187,581.18
	Car Rentals:	499	\$48,774.93
			<hr/>
			\$570,706.62
****	Grand Totals for all Agencies		
	Airline Trips:	186,586	\$41,369,379.71
	Hotel Reserv:	237,620	\$28,372,934.89
	Car Rentals:	43,948	\$4,359,314.51
			<hr/>
			\$74,101,629.11







