

State Park GUIDE



Maps, photos,
facility details
and activity
information

2012 TOYOTA TUNDRA



LOSE THE MAPS. FIND SOME ADVENTURE.

The 2012 Tundra is big, it's bold, and it's J.D. Power and Associates' Most Dependable Large Pickup, 7 years running. So get in, or get out of the way.



OFFICIAL VEHICLE OF
THE TEXAS PARKS AND
WILDLIFE FOUNDATION



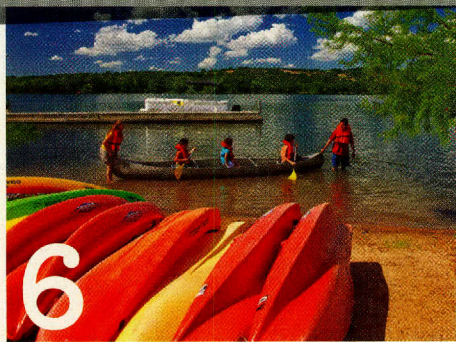
OFFICIAL VEHICLE OF
THE TOYOTA TEXAS
BASS CLASSIC





The Toyota Tundra received the lowest number of problems per 100 vehicles among large pickups in the proprietary J.D. Power and Associates 2006-2012 Vehicle Dependability StudiesSM. 2012 study based on 31,325 consumer responses measuring problems consumers experienced in the past 12 months with three-year-old vehicles (2009 model-year cars and trucks). Proprietary study results are based on experiences and perceptions of consumers surveyed October-December 2011. Your experiences may vary. Visit jdpower.com.

CONTENTS



Day Tripper

When it comes to escaping the city for a quick day trip or a relaxing weekend, many Texas state parks are just a skip away.

Features

- 4** Things to Do
- 6** Places to Go
- 14** Things to Bring
- 16** Places to Stay
- 18** Things You Might See

Meet some of the diverse residents of Texas State Parks.



21

State Parks Regional Directory

- 23** Panhandle Plains
- 31** Hill Country
- 45** Big Bend Country
- 61** Prairies and Lakes
- 81** Gulf Coast
- 91** South Texas Plains
- 99** Pineywoods
- 55** State Park User Fees
- 110** Facilities & Activities Index

56 State Parks Map

TEXAS PARKS AND WILDLIFE DEPARTMENT
Carter P. Smith Executive Director
Brent Leisure Director of State Parks
Lydia Saldaña Communications Director

TPW COMMISSION
T. Dan Friedkin, Chairman, **Houston**
Ralph H. Duggins, Vice-Chairman, **Fort Worth**
Antonio Falcon, M.D., **Rio Grande City**
Karen J. Hixon, **San Antonio**
Dan Allen Hughes, Jr., **Beeville**
Bill Jones, **Austin**
Margaret Martin, **Boerne**
S. Reed Morian, **Houston**
Dick Scott, **Wimberley**
Lee M. Bass, Chairman-Emeritus, **Fort Worth**



Life's better outside.®



Special thanks to Toyota and advertisers, whose generous support made this guide possible.

Cover photo: Dinosaur Valley State Park, Chase Fountain

Texas State Park Guide Ninth Edition © 2012 TPWD PWD BK P4000-000A (05/12)

TPWD receives federal assistance from the U.S. Fish and Wildlife Service and other federal agencies and is subject to Title VI of the Civil Rights Act of 1964, Section 504 of the Rehabilitation Act of 1973, Title II of the Americans with Disabilities Act of 1990, the Age Discrimination Act of 1975, Title IX of the Education Amendments of 1972, and state anti-discrimination laws which prohibit discrimination on the basis of race, color, national origin, age, sex or disability. If you believe that you have been discriminated against in any TPWD program, activity or facility, or need more information, please contact Civil Rights Coordinator for Public Access, U.S. Fish and Wildlife Service, 4401 N. Fairfax Drive, Mail Stop: MBSP-4020, Arlington, VA 22203.

In accordance with Texas State Depository Law, this publication is available at the Texas State Publications Clearinghouse and/or Texas Depository Libraries.

An important message for State Park Visitors



from Brent Leisure, State Parks Director

Texas State Parks are unique and beautiful places with rich stories to share and a wide range of outdoor opportunities to enjoy. During your visit, I encourage you to take an interpretive tour or attend a scheduled activity to experience what makes our land, resources and history so special.

I also want to inform you of some recent changes. We are pleased to report that many park improvement and repair projects that were funded from previous legislatures are now complete or almost finished. This includes upgrades and renovations to cabins, campsites, restrooms, group facilities, playgrounds, roads and other amenities at dozens of parks.

However, as you are undoubtedly aware, the entire country continues to experience difficult economic times. These challenges have affected all levels of government as well as families. Even so, our state parks remain affordable, safe and family-friendly destinations. As part of our belt-tightening, we have modified or reduced hours of operation at some parks. **These sites have been denoted with a special icon in this publication; we encourage everyone to check www.texasstateparks.org/access or call our Customer Service Center for updates at (512) 389-8900 in advance of your trip.**

There are also ways that you can help us keep parks open and maintained. You can make a donation online, or when renewing your vehicle, boat or trailer registration. In addition, your entrance, camping and park pass fees, and your park store purchases also help directly fund parks. Find out more about how you can help at www.texasstateparks.org/help

On behalf of all of our dedicated and professional staff, welcome to Texas State Parks. We hope you thoroughly enjoy your stay and leave with wonderful memories, and a greater appreciation for the natural and cultural resources we are preserving for you and future generations.

A handwritten signature in black ink that reads "Brent Leisure". The signature is written in a cursive, flowing style.

Outdoor Family Fun in Texas State Parks

Texas State Parks are great places for family outdoor fun, and research shows that spending time in nature is good for your children's mental and physical well being. This prescription for better health is one of the best values for your money. Plus we've introduced several programs that make enjoying the outdoors easier than ever.



No License Needed

Did you know that no one needs a fishing license or stamp to fish inside the boundaries of a Texas State Park? Regardless of age, or where you're from, the Free Fishing in State Parks program makes it possible to fish anytime you like, once you've entered the park, no license required. Some parks have equipment you can borrow through our Tackle Loaner Program.

Go Fish!

Learn-To-Fish events provide all the necessary instruction and equipment (including bait!) to get you started. Children can even win prizes, including fishing equipment and other outdoor gear. The events are free to all park visitors who have paid park entrance fees.



Texas Outdoor Family

The Texas Outdoor Family program is designed to teach you and your family basic outdoor skills needed to enjoy a great overnight camping experience. Workshops are hosted at state parks for hands-on experience with camping, outdoor cooking, orienteering and various outdoor activities such as kayaking, fishing or wildlife watching. No experience or equipment is necessary! Our highly skilled outdoor specialists and trained volunteers offer the experience and the equipment. You just bring the food and enthusiasm!



Geocache Challenge

Combine the thrill of treasure hunting with the precision of global positioning devices, and you've got geocaching! The Texas State Parks Geocache Challenge brings this popular pastime to participating state parks. All you'll need is a GPS unit (or mobile phone that has a global positioning feature), the coordinates for the hidden treasure (or caches), and a free Texas State Park Geocache Challenge Passport Book (downloadable from the TPWD website). Each cache is hidden somewhere within the park; inside it you'll find small prizes, a logbook, a special orienteering punch, and facts about the park. Don't know how to geocache? Selected state parks host "how-to geocache" workshops throughout the year. GPS units are provided.



Kids Play Free!

Admission to Texas State Parks is free for kids age 12 and younger. It's more affordable than going to movies or amusement parks.

Discovery and Interpretive Centers

Dozens of state parks and historic sites have interpretive centers with fascinating exhibits that engage and educate visitors (shhhh, don't tell the kids they're learning!). Nature centers and living history museums illustrate the diversity of Texas' wildlife, environment, and culture—past and present. And our newest discovery centers at Guadalupe River and Davis Mountains offer hands-on activities that will bring out every child's inner explorer!




Texas state parks belong to you and future generations to experience. To help take care of the park, here are some things to remember: leave no trace; if you pack it in, then pack it out; stay on trails and tread lightly; don't take anything from the park (rocks, leaves, wood, etc.) as it is a crime to remove or damage any state property or resource; pick up litter; keep your dog on a leash and pick up after it.

texasstateparks.org

Learn more—and start making priceless memories!



 facebook.com/texasparksandwildlife

Day Tripper

WHEN IT COMES TO ESCAPING THE CITY FOR A QUICK DAY TRIP OR A RELAXING WEEKEND, MANY STATE PARKS ARE RIGHT NEARBY.

Dallas/Fort Worth Area

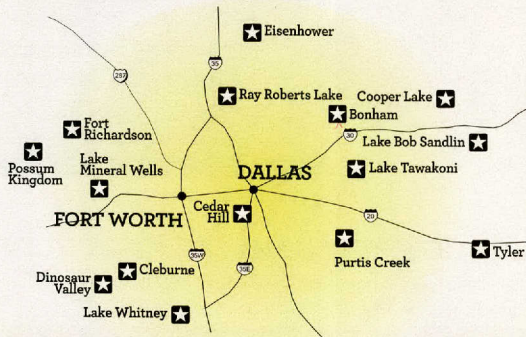
Cedar Hill State Park

Located in the city limits of the metro suburb of Cedar Hill and inside Dallas County is an 1,800-acre park and nature preserve that sits along the shoreline of 7,500-acre Joe Pool Reservoir. With two large boat ramps and



Great water access at Cedar Hill SP.

its own marina, Cedar Hill provides quick access to big water, but is quaint enough for a kayak. Cedar Hill is also a renowned biking park, with more than 12 miles of biking trails, and another 4.5 miles of hiking trails. The park also boasts an impressive 350 developed campsites.



Ray Roberts Lake State Park

"Ray Rob" is close enough to the metroplex to hit the water by lunchtime, and big enough to take the whole gang. With three park units, and five addi-



Beautiful Lantana Lodge at Ray Roberts Lake SP.

tional satellite park entry points, the sprawling park is located near the towns of Pilot Point and Sanger (about an hour to the north of DFW), and grants access from all sides to the 30,000 surface acres of fishing and skiing delight on this U.S. Corp of Engineers impoundment. The park has a marina, as well as overnight accommodations at Lantana Lodge. Or, camp if you want, in the more than 200 developed campsites.



Eisenhower SP offers access to 70,000-acre Lake Texoma north of DFW.

Eisenhower State Park

Not to be overlooked, Eisenhower State Park to the north near Denison is located on the huge, 74,000-acre Lake Texoma just up Highway 75 bordering the Texas-Oklahoma state line, and is legendary for its water fun. The park also has its own marina and yacht club, and lots of hiking trails to boot.

Lake Tawakoni State Park

One of the newest state park units in the DFW area, the park is located just outside the town of Wills Point (an hour east of Dallas). In its entirety, the reservoir covers 36,000 acres with some 200 miles of shoreline. The park rests on 376 acres and can make for a perfect day at the lake with its swim beach, a four-lane boat ramp and 40 picnic sites.

Cooper Lake State Park

Not far from the Metroplex to the east, Cooper Lake is located north of I-30, near Spur Springs. The park is home to a 19,000-acre

lake, the park offers miles of trails, a sandy beach and even cabins available for rent. Cooper is also considered a great fishing lake for largemouth and hybrid-striped bass.

Lake Mineral Wells State Park



Lake Mineral Wells SP and Trailway features a 645-acre reservoir.

West of Fort Worth, Lake Mineral Wells offers an intimate lake environment at 645 surface acres of water which can make for some great fishing. The park offers miles of trails for hiking, horse-back riding, numerous campsites and even rock climbing as well.

Possum Kingdom State Park



Lakeside camping at Possum Kingdom SP.

“Ol’ P.K.” remains almost folkloric to this region of Texas, and beckons anglers, boaters, even scuba divers to its 17,000-plus surface acres of clear,

deep-blue expanse, as it has for more than 50 years. Visitors to Possum Kingdom State Park can also choose to camp or stay in one of the park’s seven cabins.

Purtis Creek State Park

For bass fishing, check out this 1,500-acre park, southeast of Dallas near Eustace. Although the lake is only 355 acres, the angling action—which is catch-and-release for bass—can be outstanding.



Fish from the bank, pier or boat at Purtis Creek SP.

And since the lake is fully contained within the state park, no one ever needs a fishing license to fish anywhere at Purtis Creek.

Fort Richardson State Park

Situated near a 385-surface-acre lake, Fort Richardson features a restored frontier outpost—circa 1860s and 1870s—in addition to its many recreational offerings.



Quarry Lake at Fort Richardson SP.

Houston Area



Great fishing and wildlife viewing at Brazos Bend SP.

Brazos Bend State Park

Less than 30 miles southwest of the Houston skyline, Brazos Bend seems a world away. A preserve for more than 300 adult American alligators and more than 1,000 less than 6 feet in length, the 5,000-acre park features several lakes for fishing, a visitor center, huge live oak trees, and more than 30 miles of multiuse trails in addition to its water and electric campsites, primitive sites and screened shelters.

Sheldon Lake State Park

Just east of Houston's downtown is Sheldon Lake, a unique day-use park that features a unique educational facility, opportunities for nature study, a reservoir, and great fishing ponds for kids.

San Jacinto Battleground and Battleship TEXAS State Historic Sites

Further to the southeast in La Porte, Battleship TEXAS and the San



Battleship TEXAS is the last remaining Dreadnought-type ship in the world.

Jacinto Battleground stand as sentinels along the bay. Folks can tour the TEXAS—the only surviving Dreadnought to have served in World War I and World War II—as well as tour the famed battlefield site where Texas troops defeated Mexican forces under General Santa Anna in 1836.

Stephen F. Austin State Park

To the west just off Interstate 10, Stephen F. Austin, near Sealy, pays homage to the “Father of Texas,” who established the first Anglo-American settlement in Texas in 1828. The park includes full-hookup campsites and the former town site of San Felipe, which was burned by the Texas army fleeing advancing Mexican troops in 1836.

Huntsville and Lake Livingston State Parks

To Houston's north, two pineywood retreats offer camping, hiking, horseback riding and great fishing. Huntsville has group facilities built by the Civilian Conservation Corp, while Livingston has a swimming pool and access to a giant 84,000-surface-acre reservoir.

Village Creek State Park

Just north of Beaumont and east of Houston, Village Creek offers great paddling along the creek or hiking among the nearly 2,500 acres of huge pine and magnolia trees in the heart of the Old Texas Big Thicket. Enjoy primitive camping, water and electric campsites and even an eight-person cabin.



Village Creek SP is famous for po

MERRELL



Since 1970

**Outfitting Texas for
Travel, Adventure, and FUN!**

Let's Get Outside®



| | | |
|---------------------------|-------------|--------------|
| 2410 San Antonio Street | Austin | 512-478-1577 |
| 1014 North Lamar | Austin | 512-476-1414 |
| South Lamar at Westgate | Austin | 512-899-0992 |
| 5400 East Mockingbird Ln. | Dallas | 214-824-7444 |
| Preston Forest Center | Dallas | 972-861-5700 |
| 2934 South Shepherd Dr. | Houston | 713-526-5226 |
| 2501 Post Oak Blvd. | Houston | 713-526-5440 |
| The Quarry Market | San Antonio | 210-829-8888 |

WholeEarthProvisi on.com

San Antonio Area

Government Canyon State Natural Area

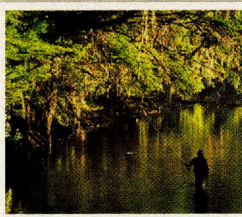


Government Canyon State Natural Area has more than 40 miles of scenic trails.

Just a stone's throw beyond northwest San Antonio's Loop 1604, in Helotes, is a premier hike-and-bike day-use park. With more than 8,600 acres and more than 40-plus miles of trails, this rugged park also protects some of the precious Edwards Aquifer recharge zone.

Guadalupe River State Park

Guadalupe River State Park is located north up Hwy. 281 between Boerne and New Braunfels. The park stretches along four scenic miles of river frontage and provides access to the Guadalupe River—long



Scenery, fishing and tubing are great at Guadalupe River SP.



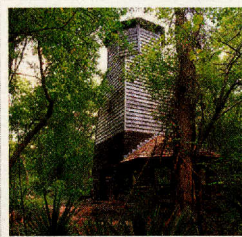
considered the premier place for summertime tubing in Texas. **Honey Creek State Natural Area** is also located within the park. With its huge bald cypress trees, it is accessible only through guided tours, and preserves more than 2,000 acres of pristine woods.

South Llano River State Park

Farther out west is South Llano River State Park, another tubing hot spot along the South Llano River just off Interstate 10, near the town of Junction.

Garner State Park

Despite its somewhat remote location near the small town of Leakey, Garner is one of the most frequently visited state parks in Texas and for decades has been considered great for camping, swimming, tubing and kayaking—and don't forget the famous Garner State Park dance during warm summer evenings.



Find great hiking trails at CCC-built Palmetto SP.

Palmetto State Park

Near the towns of Luling and Gonzales, Palmetto State Park—named for the unique dwarf palmetto plant which gives the park a tropical, almost Jurassic feel—beckons with access to the San Marcos River, and is located just downstream from the Luling Zedler Mill Paddling Trail. The park is also great for wildlife viewing and has miles of renovated and boardwalk trails.

Lockhart State Park

Just outside the town of Lockhart, the quaint park features a swimming pool, golf course, and CCC-built group facilities.



Goliad SP's *Mission Espíritu Santo*, beautifully reconstructed, provides visitors with history and outdoor recreation.

Goliad State Park

A little farther to the southeast, Goliad preserves rich Texas history and landmark Mission Espíritu Santo, near the historic Fannin Battleground site and Zaragoza Birthplace State

Historic site. The park also features a swimming pool and campsites near the San Antonio River.

Lake Corpus Christi State Park

This 21,000-acre lake sits just outside of Mathis. Great for camping, boating and fishing, Lake Corpus Christi also offers screened shelters in addition to water and electric hookup campsites.

Choke Canyon State Park

If it's big water you want, head south to Choke

Canyon near Three Rivers, located on the shore of a 26,000-acre reservoir. Choke Canyon routinely rates as one of the best largemouth bass lakes anywhere in Texas.

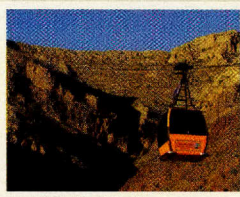


Choke Canyon SP offers world-class bass fishing.

El Paso Area

Franklin Mountains State Park

Within El Paso's city limits is the nation's largest park within an urban environment, at more than 24,000 acres. The Franklin Mountains overlook the Rio Grande border along the historic Paso del Norte, and this desert mountain park features miles and miles of multi-use trails for day use.



Inside Franklin Mountains SP, the Wyler Aerial Tramway provides visitors a unique view high above the El Paso area while riding in sky gondolas.

visitors get an unobstructed view for 7,000 square miles that encompasses three states and two countries. There's also a great store for souvenirs.

Wyler Aerial Tramway

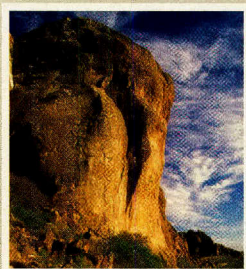
High atop Ranger Peak inside Franklin Mountains State Park, folks can take a four-minute ride in unique, Swiss-made cable cars, called sky gondolas, traversing 2,600 feet and overlooking a steep canyon more than 200 feet below. From the peak

Hueco Tanks State Park and Historic Site

About 30 miles northeast of El Paso lies some of the best rock climbing anywhere in the Southwestern U.S., as well as amazingly well preserved rock art pictographs. Hueco Tanks is

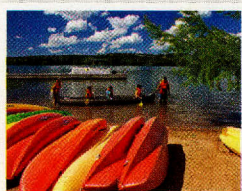


named for the large pockets of rainwater that pool among the rock basins, called "huecos." In addition to great interpretive history tours, visitors can also enjoy hiking and camping. Access is controlled to ensure that these valuable resources are protected.



Hueco Tanks SP and SHS offers great rock climbing and amazingly preserved rock art dating back thousands of years.

Austin Area



Canoe rental at Inks Lake SP

Inks Lake State Park

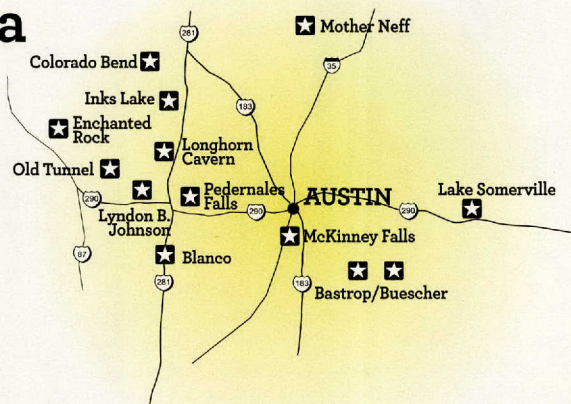
This popular stop located west of Austin, just off Hwy. 281 near Burnet along the Colorado River's famed Highland Lakes chain, is renowned for clear, open water, scenic landscapes, wildflowers and more than 200 campsites and cabins. At 830 surface acres, Inks Lake is big enough for most any watercraft, yet small enough to allow for quiet canoe trips below its granite cliffs.

Blanco State Park

This favorite summer retreat, located on Hwy. 281 near the town of Blanco, is dissected by the Blanco River. This is the perfect place to swim, tube, fish or just relax under the trees.



Swim or fish near the falls at Blanco SP.



Pedernales Falls State Park



River access and lots of trails at Pedernales Falls SP.

Located near Johnson City off Hwy. 290, the park encompasses 5,200 acres of tree-covered hills, and access to the Pedernales River. "P-falls" is also popular with birders, who can use the park's birding blinds to look for the rare golden-cheeked warbler.

Lake Somerville State Park

Just beyond the town of Giddings and northeast of Austin, the park features more than 11,000 surface acres of open water. The Nails Creek Unit is prime for trail biking and equestrian use with 13 miles of trailway that connects to the Birch Creek Unit.

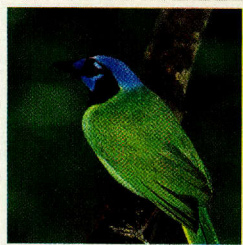
McKinney Falls State Park

McKinney Falls State Park is near the heart of everything in Austin. Located on the city's southeast side, it's within the city limits, yet it seems miles away. With its paved and unpaved hiking trails, scenic creeks and waterfalls, and even an ancient volcano and historic Native American rock shelter, there's something for everyone.

Bastrop and Buescher State Parks

To the east of Austin, along Hwy. 71, Bastrop and Buescher state parks beckon to road bikers, campers, anglers and those just wanting a quick getaway amid the lost pine forests. Both parks feature group facilities built by the Civilian Conservation Corps, fishing ponds and miles of hiking trails.

Rio Grande Valley Area



Brilliantly colored green jays can be seen in any of the Rio Grande Valley State Parks.

Bentsen-Rio Grande Valley State Park

As headquarters for the World Birding Center network, Bentsen-RGV State Park's 750-plus acres also represent a significant remnant of the ever-vanishing riparian floodplain forest land that once covered this fertile region of Texas. Known for birds like the plain chachalaca and colorful green jays that frequent the park, it also has primitive tent camping, miles of hike and bike trails, and a two-story high hawk tower. The headquarters facility boasts an interpretive museum, butterfly habitat garden and a fantastic state park store.

Estero Llano Grande State Park

Located in Weslaco and at the geographic center of the Rio Grande Valley network, this park features preserved

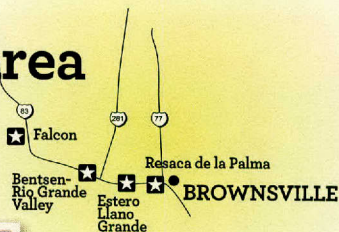


Trails meander through the scenic wetlands of Estero Llano Grande SP.

wetlands habitat in a more urban location. Many diverse bird species can be spotted along the park's numerous boardwalks and three miles of trails. The park also features a bunk house and cabins for rent.

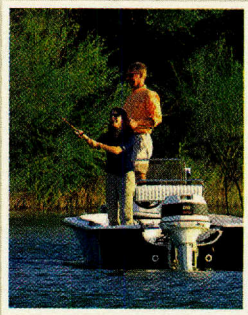
Resaca de la Palma State Park

The newest and largest state park component of the World Birding Center, Resaca is only minutes outside of Brownsville. Named for the shallow oxbow ponds once formed by Rio Grande flooding, the park has wetland environments—attracting shorebird and waterfowl species such as black-bellied whistling ducks and herons—as well as traditional South Texas scrub brush, which attracts everything from roadrunners to long-billed thrashers. The park also has hike-and-bike trails for day use.



Falcon State Park

Considered the westernmost edge of the Rio Grande Valley, the state park consists of more than 500 acres of parkland along Falcon International Reservoir—a huge, 60-mile-long impoundment of more than 95,000 surface acres formed by a dam along the Rio Grande border with Mexico. The park offers a wide range of developed campsites with fire rings, including full RV hook-ups, and screened shelters with and without air conditioning. Most notably, Falcon State Park offers access to one of the most renowned largemouth bass fishing in the southwestern U.S.



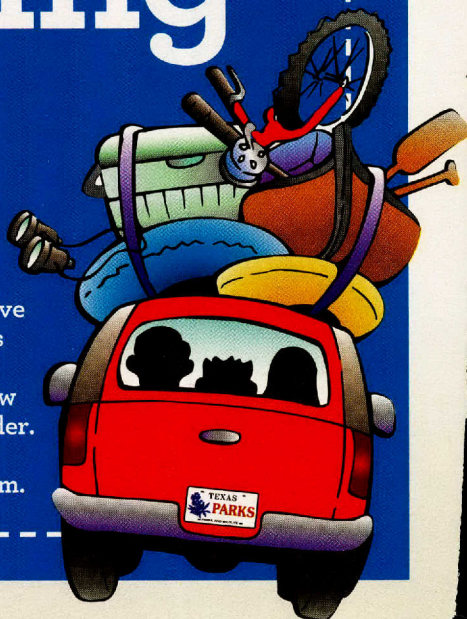
Falcon SP is widely recognized for its fishing, especially for largemouth bass.



facebook.com/texasparksandwildlife

Packing it Up

A basic inventory of supplies for your next trip to a state park can ensure that you and your group have the essentials to make your visit as enjoyable, comfortable, and (most importantly) safe as possible. Below are a few suggested items to consider. So check your luggage before you leave, and make sure you have room.



First-Aid Kit

Always plan for minor emergencies, which will hopefully never occur. Bandages, over-the-counter medicines and pain relievers, tweezers, rubbing alcohol, gauze, scissors, pliers—these and other items should be packed and stored for easy access for every trip.

Drinking Water

It's wise to include drinking water in your supplies, and plenty of it. The Texas sun

is strong, and activities such as hiking or playing outdoors can drain your body of fluids. Always take a bottle of water or two in your backpack, even for short hikes. Many state park stores sell water and other beverages, but to be safe, bring your own as well.

Insect Repellent

Whether on the trail, out on the lake or even in the tent, mosquitos can disrupt an otherwise pleasant trip. Many of today's

products are not only effective, but also gentle to skin and environmentally friendly.

Flashlights and Batteries

For cave tours, night hikes or just general safety and convenience at the campsite, a flashlight (at least one) can be invaluable. Make sure and bring along some extra batteries too, as chances are good that they'll get a lot of use.

Rain Jacket and Tarp

It's never a bad idea to plan for weather changes in the Lone Star State, as they can happen quickly and without much notice. The tarp can be used in various ways, such as covering your camping area and supplies while gone from the campsite, or during inclement weather.

Sunscreen, Hat and Sunglasses

Sunscreen with a sun protection factor (SPF) of 30 or more is always recommended. Make sure to apply it throughout the day, especially in regions of direct sunlight or in and around water, which can reflect and intensify the effects of harmful rays. And a wide-brimmed hat or ball cap, and even sunglasses, can help keep your face shaded.

Sturdy, Comfortable Shoes

It's important to keep your feet dry and comfy for hiking, bird watching, biking or other activities. Trails can often have rocks, loose gravel, tree roots, and steep inclines, so you'll want good traction as well.

Air Pump

A small, inexpensive hand-held pump can save the day, whether you're inflating an emergency bike tire in a pinch, an air mattress or even sports balls for recreation.

Walking Stick or Pole

For either a long hike or short walk, a walking stick—whether wood or metal—can really ease the stress and impact on knees and ankles, and can provide key extra balance while on steep or rugged hikes and climbs. Hiking and walking are great exercise, and a walking stick will allow you to last longer and hike more safely. Many state parks stores offer walking sticks for sale.

Fishing Gear

You can't use it if you don't take it. Fishing is one of the most popular activities in America, and state parks offer great rivers, lakes and ponds in which to fish. Best of all, no one ever needs a fishing license or stamp to fish inside a Texas State Park with the Free Fishing in State Parks program. Check with the park staff to find out the park property boundaries.

Camera and Binoculars

Park time is leisure time for most folks, and you'll want to remember the time, places, people and events that make your trip special. Photography—for wildlife, people and landscapes—is a popular pastime, and state parks offer limitless opportunities.

Emergency Information

Last, but certainly not least, it is up to each park visitor to be familiar with park emergency procedures. Contact information for medical, law enforcement or urgent needs is available at each park headquarters office, should you ever need it. Make sure you know this information, or call ahead before your trip and obtain it.



Enjoy the Softer Side of Camping

No matter what your idea of "roughing it" in the outdoors might be, Texas State Parks feature a variety of softer accommodations.



Indian Lodge

Lodges

To many folks, having a lodge or hotel in a wilderness setting is about as good as it gets. Lodges in Texas State Parks boast unique features and charm, letting you experience the best of outdoor recreation during the day while enjoying indoor comforts at night.

Indian Lodge, located inside Davis Mountains State Park is a historic, full-service lodge with a restaurant and swimming pool. Built by the CCC in the 1930s, all 39 rooms have been fully restored and it remains a shining star in our park system.

Lantana Lodge, located inside Ray Roberts Lake State Park north of the

DFW Metroplex near Denton, is a full-service lodge, restaurant and marina on the shores of a 30,000-acre reservoir. It is just far enough from city life to be a great retreat spot, and close enough to head into town when you need to.

San Solomon Courts are



Retro style hotel at Balmorhea SP.

located inside Balmorhea State Park. The retro-style rooms and architecture of the 18-room facility make for a unique getaway in a park developed by the CCC next to the world's largest natural swimming

pool. Rooms feature two or three double beds and some also have kitchens.



One-of-a-kind desert mountain scenery and comfort of the Big House at Big Bend Ranch SP.

Nestled in the one-of-a-kind scenic backdrop of the desert mountains in Big Bend Ranch State Park is "The Big House." This renovated, historic ranch house has three bedrooms and baths available for rent. Advanced arrangements can make for food service as well.

Screened shelters

For some, the idea of having a screened shelter with walls, and a fire ring, picnic table and grill outside is the perfect combination. You get a near-camping experience by allowing the sights and sounds of the outdoors in, but protection from the outside elements under a roof. They're also great for tossing a mattress on the inside floor.

State parks that offer screened shelters:

Abilene, Blanco, Brazos Bend, Buescher, Caddo Lake, Cleburne, Eisenhower, Falcon, Fort Parker, Fort Richardson, Garner, Goliad, Huntsville, Lake Bob Sandlin, Lake Brownwood, Lake Corpus Christi, Lake Livingston, Lake Mineral Wells, Lake Whitney, Martin Dies, Jr., Martin Creek Lake, McKinney Falls, Meridian, Stephen F. Austin, Tyler

Limited service cabins and modified shelters

A growing trend is to have the benefit of a cabin—air conditioning, microwave and bunk

beds—but still have group restroom facilities and showers nearby. These are competitively priced and offer a great way to be in a park as a group.

State parks with limited service cabins and modified shelters:

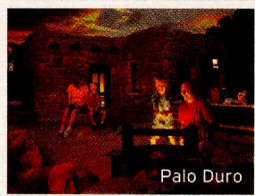
Buescher, Choke Canyon, Cooper Lake, Falcon, Inks Lake, Lake Colorado City, Lake Bob Sandlin, Martin Creek Lake, Martin Dies, Jr., Tyler, Palmetto, Palo Duro Canyon, San Angelo

Group bunkhouses

If you need group accommodations, some of our parks can offer barracks and bunkhouses, ranging in styles and sizes. Most have air-conditioning and restrooms, as well as beds, although linens may be needed. They're great for family reunions or large gatherings.

State parks with group bunkhouse facilities:

Bastrop, Big Bend Ranch, Bonham, Cleburne, Daingerfield, Devils River State Natural Area, Estero Llano Grande, Fort Parker, Hill Country State Natural Area, Lake Brownwood



Beautiful, CCC-built Rim Cabins at Palo Duro Canyon SP.

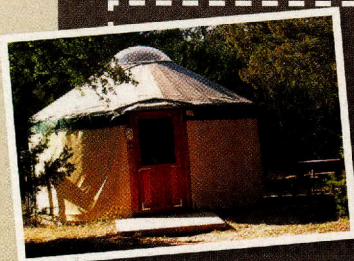
Cabins

Cabins remain one of the most popular attractions in our parks, both among outdoor enthusiasts, and those who just want a secluded getaway but still have lots of indoor comfort. Our cabins, many of which were built by the Civilian Conservation Corps, feature air-conditioning and heat, bedrooms, kitchens, microwaves and restrooms.

State parks with cabins:

Bastrop, Caddo Lake, Cooper Lake, Daingerfield, Garner, Lake Brownwood, Palo Duro Canyon, Martin Creek Lake, Possum Kingdom, Village Creek

Reservations for all accommodations are booked through state park customer service (512) 389-8900, or on our website.



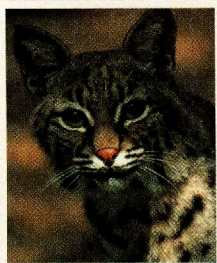
It's a Yurt

Found in Abilene State Park, these recent additions to the park system are actually an ancient-style canvas tent with a floor and furniture. Each yurt has a double/single bunk bed with mattresses, fold-out sofa, a microwave and a night stand. Outside is a picnic table, fire ring and water spigot.

Meet the Locals

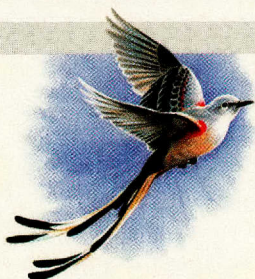
While out and about experiencing Texas State Parks, here are some of the local residents—the four-legged, finned, feathered, and furry ones, that is—that you might encounter, depending on where you are in Texas.

Prairies and Lakes Region



Texas Bobcat

This shy-natured, mostly nocturnal cat has small tufts on the tips of its ears. The bobcat's ability to adapt to changing conditions has allowed this native cat species to thrive even in landscapes near urban areas.



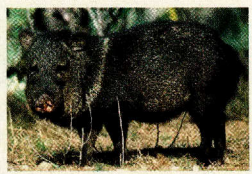
Scissor-Tailed Flycatcher

These birds are unmistakable with a tail that doubles its body length. It feeds mainly on insects by "hawking," waiting on a perch and flying out to catch them in flight.

Big Bend Region

Gray Fox

This elusive, mostly nocturnal mammal has a unique ability to climb trees to hunt or escape danger.



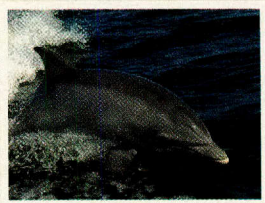
Javelina

This small, pig-like animal has a white ring around its neck, where it gets its proper name—collared peccary.

Gulf Coast Region

Bottle-Nosed Dolphin

You may see one of these curious and intelligent animals leaping offshore or swimming in the bay near Mustang Island or Goose Island state parks.



South Texas Plains Region

Greater Roadrunner

An icon of the U.S. Southwest, this swift, cartoon-like bird gets its name because it often prefers to run rather than fly, whether chasing down food such as small reptiles (snakes and lizards) or fleeing from danger.



Pineywoods Region



Beaver

This sleek, streamlined swimmer assures its water supply and establishes its territory by building a dam and home of mud, rocks and wood.



Hill Country Region

Porcupine

These shy and even docile rodents eat tree bark, are excellent tree climbers, and are known mostly for their sharp quill-tipped, bushy hair. Give them space from you and your pets.



Wild Turkey

This large upland game bird lives in tree-lined or brushy areas, often near streams and rivers, and although it roosts in the tops of tall trees, it nests on the ground.



Panhandle Plains Region

Mule Deer

Found mostly in West and Northwest Texas, this hearty, hoofed animal will often appear to “hop” on all fours for a quick escape, rather than run.



Black-Tailed Prairie Dog

Look for their homes: large, bare patches of open ground with colonies of small dirt mounds atop their burrows, called “prairie dog towns.”

Woodpeckers

The red-headed woodpecker is striking at rest and in flight, by showing its colors of red, black and white. Also look for the red crest and black body of the pileated woodpecker, one of the largest woodpeckers in North America.



STATE PARKS DIRECTORY

- 23 Panhandle Plains Region
- 31 Hill Country Region
- 45 Big Bend Country Region
- 55 State Park User Fees
- 61 Prairies and Lakes Region
- 81 Gulf Coast Region
- 91 South Texas Plains Region
- 99 Pineywoods Region
- 110 Facilities and Activities Index

Mustang Island State Park



facebook.com/texasparksandwildlife

Symbol Legend

Use this legend as a reference for facilities and amenities at each of the parks listed in the State Parks Directory pages.

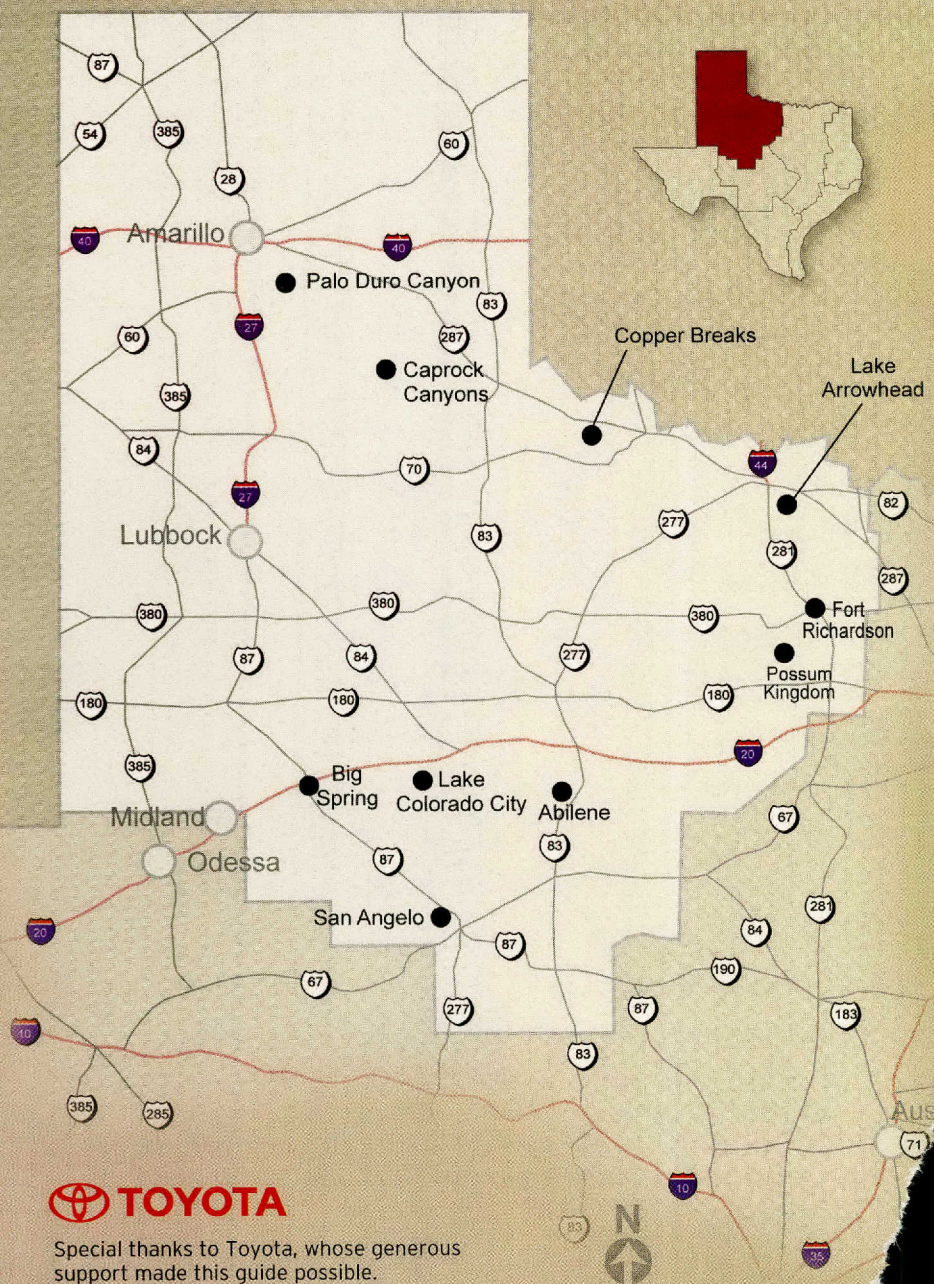
- | | |
|---------------------------------------------------------------------------------------------------------------|-------------------------------------------------------------------------------------------------------------------|
|  CCC |  Overnight Group Facilities |
|  Day Use Only |  Primitive/Walk-in Campsites |
|  Hiking Trails |  Tent Campsites |
|  Primitive Hiking |  Water and Electric Campsites |
|  Nature/Interpretive Trails |  Water, Electric and Sewer Sites |
|  Biking Trails |  Screened Shelter |
|  Mountain Biking Trails |  Shelters with A/C |
|  Equestrian Trails |  Cabins |
|  Rock Climbing |  Full or Limited Cabins |
|  Golf |  Equestrian Facilities |
|  Fishing |  Motel/Lodging |
|  Fishing Pier |  Playground |
|  Fish Cleaning Shelters |  Boat Ramp |
|  Tackle Loaner |  Boat Rental |
|  Swimming |  Restaurant |
|  Water Skiing |  Swimming Pool |
|  Picnic Tables |  Open Beach |
|  Park Store |  Restrooms |
|  Exhibit/Interpretive Center |  Showers |
|  Historic Site/Museum |  Dump Station |
|  Day Use Group Facility |  Wheelchair Accessible |

! Operations or access has changed at this park.

texasstateparks.org/access

State parks with schedule or operational changes have been denoted with this special icon; check www.texasstateparks.org or (512) 389-8900 in advance of your trip.

PANHANDLE PLAINS REGION

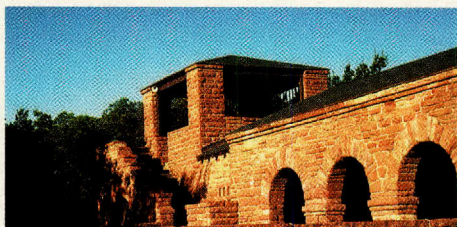
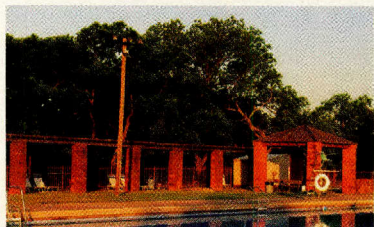


Special thanks to Toyota, whose generous support made this guide possible.

Abilene State Park

150 Park Road 32, Tuscola 79562 📞 (325) 572-3204

GPS Latitude N 32 14 26.34 | Longitude W 99 52 44.65



Awake to find a wooded oasis on the banks of Elm Creek in the midst of the Texas Midwest, located just south of the city of Abilene. Pecan, red oak, cottonwood and elm trees arch over the campground. A historic water tower and observation deck constructed by the CCC with rust-colored sandstone overlook the large swimming pool, a popular summertime attraction. White-tailed deer and other wildlife can be spotted along a wooded hiking trail. Fishing, hiking, boating and picnicking are available at adjacent Lake Abilene, the newest section of the park. A one-mile nature trail plus an ADA-compliant, 1/2-mile trail are also available at the main park area. Abilene State Park was opened and dedicated on May 10, 1934.

Big Spring State Park

1 Scenic Drive, Big Spring 79720 📞 (432) 263-4931

GPS Latitude N 32 13 55.99 | Longitude W 101 29 26.48



On the edge of the town of Big Spring, the park sits on a high bluff overlooking the vast Rolling Plains at this northern edge of the Edwards Plateau. Years ago, Comanches made camp here, and cattle drivers and immigrants moving west even carved “graffiti” into the stone outcropping. Today, a three-mile drive curves along the limestone rim rock ledge

around Scenic Mountain and is enjoyed by joggers, walkers and those who come to see the variety of bird species that live here. Views at the top are quite dramatic from the individual picnic tables or from the group pavilion.

Fort Richardson State Park, Historic Site and Trailway

228 State Park Road 61, Jacksboro 76458 📞 (940) 567-3506

GPS Latitude N 33 12 22.14 | Longitude W 98 09 25.09



This multi-purpose recreational park also preserves an important historic site. Settlers pushing into North Texas after the Civil War clashed with Comanche and Kiowa Indians, prompting the military to respond with a line of defensive frontier forts. Richardson was the northern anchor. The park features several restored post buildings, which hark back to a soldier's life in the Old West. Surrounding the old fort

grounds, the park offers camping and outdoor activities, including primitive tent sites, full hookup RV sites, wildlife viewing nature trails and fishing in two reservoirs. Guided tours are available during the week; self-guided tours are available on the weekend. Call for tour times or to schedule a group tour.

LOST CREEK RESERVOIR STATE TRAILWAY, part of the Rails-to-Trails program, is a 10-mile hike, bike and equestrian trail with an improved surface that passes through open prairie and along Lost Creek, and circles two reservoirs. A day-use trailhead provides restrooms, a picnic pavilion and tables, a swimming beach, and a fishing pier, all with convenient parking near Fort Richardson and the town of Jacksboro.

! Operations or access has changed at this park.
 texasstateparks.org/
 access

Lake Colorado City State Park

4582 F.M. 2836, Colorado City 79512 📞 (325) 728-3931

GPS Latitude N 32 19 05.80 | Longitude W 100 56 11.04



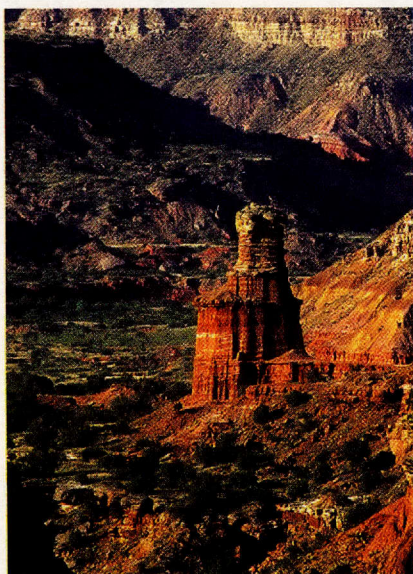
The lake provides an ideal habitat for fish and waterfowl and attracts anglers, birdwatchers, waterskiers and even small sailboats in the West Texas wind. The newly quarried sandstone, limited-service cabins fit right in with the reddish and rocky landscape while providing a climate-controlled interior. A covered overhang on each cabin

makes a front porch, sheltering the picnic table from the sun, and affords guests outdoor meals with a view.

Palo Duro Canyon State Park

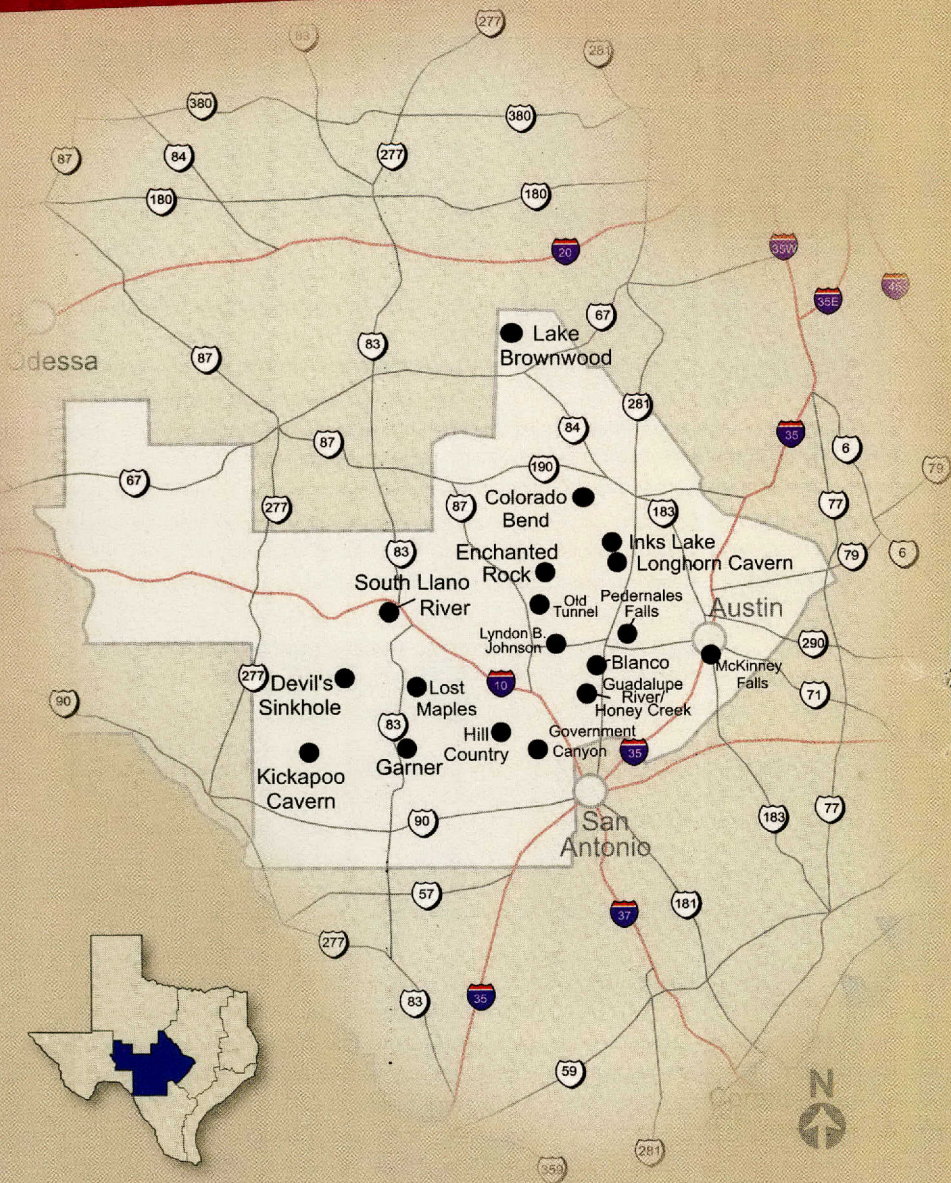
11450 Park Road 5, Canyon 79015 📞 (806) 488-2227

GPS Latitude N 34 59 04.84 | Longitude W 101 42 06.51



One of the most renowned destinations in Texas, this mysterious terra cotta badland, referred to as the “Grand Canyon of Texas,” calls out to the adventuresome to be explored. A daylong horseback ride or challenging hike will take you to this home of the famous Lighthouse rock formation. Or drive to the top of the canyon and take in the breathtaking view from the top of the overlook. The full-service park offers primitive and developed campsites as well as newly renovated rock cabins and fully furnished CCC-constructed cabins. Longhorns still graze at the park, too. The popular outdoor musical “Texas” is performed in the park’s amphitheater every summer.

HILL COUNTRY REGION



Special thanks to Toyota, whose generous support made this guide possible.

Blanco State Park

P.O. Box 493, Blanco 78606 📞 (830) 833-4333

GPS Latitude N 30 05 34.11 | Longitude W 98 25 25.57



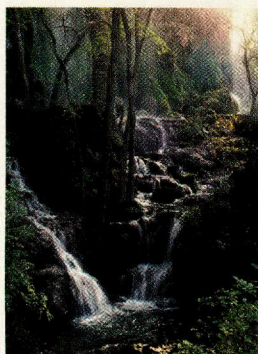
Located four blocks from Blanco's charming, historic town square, the park borders one mile of the spring-fed Blanco River and draws crowds from nearby Austin and San Antonio to relax in the sun, swim, tube, fish and camp. Bring your own volleyball and net, horseshoes and floats to make the most of the facilities. Spend a quiet weekend picnicking under the trees and watching stars at night. Shelters,

campsites and a CCC-built group facility make this park popular with both tent campers and RVers, as does its proximity to Hwy 281. Rent tubes, kayaks and canoes at the State Park Store. Blanco State Park is well known as a small, peaceful, family-oriented park. Interpretive and educational programs are offered year round.

Colorado Bend State Park

P.O. Box 118, Bend 76824 📞 (325) 628-3240

GPS Latitude N 31 01 22.40 | Longitude W 98 26 32.67



Get away to the rugged Colorado River country at this pristine wilderness location suited to primitive tent camping. The drive to this old fishing camp takes you through beautiful Hill Country landscapes and on a winding gravel road for the last seven miles down into the river canyon. From January to April, fishing on the river includes the legendary spawning run of the white bass. The park offers 30 miles of hike and bike trails, spring-fed creeks and swimming holes, limestone bluffs and canyons, and abundant wildlife. Hike to Gorman Falls, a breathtaking 65-foot travertine waterfall that cascades down to the

Colorado River, or take the guided tour on Saturday afternoon. Reserve a weekend Crawling Cave and Karst Tour and explore the tight passages and large chambers found beneath this unique piece of the Texas Hill Country.

Devil's Sinkhole State Natural Area

P.O. Box 678, Rocksprings 78880 📞 (830) 683-3762

GPS Latitude N 30 03 33.19 | Longitude W 100 06 35.17



Peer into the depths of Devil's Sinkhole, then watch as millions of bats emerge into the Texas evening sky during the warm-weather months. The natural area is home to the largest single-chambered and third-deepest cavern in the state. Evening flight tours are offered Wednesday through Saturday evenings during the summer to witness the bat emergence. Access to the natural area is limited to tours, and reservations are required. Birding tours are also available. Make reservations through the Devil's Sinkhole Society: (830) 683-2287.

Enchanted Rock State Natural Area

16710 Ranch Road 965, Fredericksburg 78624 ☎ (830) 685-3636

GPS Latitude N 30 29 45.45 | Longitude W 98 49 11.53

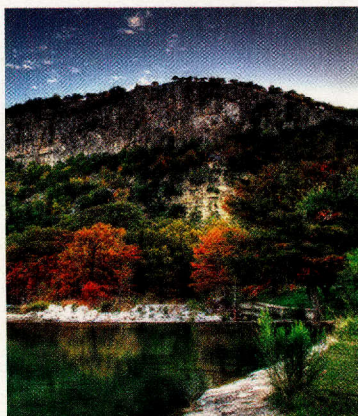


Climb to the top of this unique pink granite dome that rises 425 feet above the surrounding countryside, 1,825 feet above sea level. Enchanted Rock State Natural Area covers 640 acres and is one of the largest batholiths, or exposed underground rock formations, in the United States. Tonkawa Indians named it, believing ghost fires flickered at the top and that a Spanish conquistador had cast a spell on it. Enchanted Rock was designated a National Natural Landmark in 1970 and was placed on the National Register of Historic Places in 1984. The park is very popular with rockclimbers, and for picnicking, geological study, birdwatching, stargazing, hiking and tent camping, especially on weekends. Occasionally the park fills to capacity and has to be closed, so call before you visit. Mid-week or off-season periods offer smaller crowds, and always try to reserve campsites months in advance.

Garner State Park

234 R.R. 1050, Concan 78838 ☎ (830) 232-6132

GPS Latitude N 29 34 54.48 | Longitude W 99 44 30.69



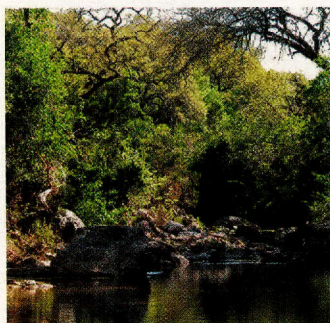
Garner State Park is a summer ritual for so many families that now some represent the fifth generation to have spent part of their vacation on the Frio River. Some of the traditions began during the CCC period of the 1930s when the “boys” constructed a stone dance pavilion and invited local girls to the dance. Now the park hosts the oldest outdoor dance in Texas with jukebox music filling the valley each summer evening. During the day, enjoy tubing in the cool waters among the cypress trees and many scenic views. Summer weekends are typically busy, filling the parking lot; and day users

may be turned away. Best advice: Visit during mid-week or off-season periods. Reserve cabins, shelters and campsites months in advance. A visitor center, seasonal grocery store, miniature golf and pedal boats are also available.

Government Canyon State Natural Area

12861 Galm Road, San Antonio 78254 ☎ (210) 688-9055

GPS Latitude N 29 33 08.31 | Longitude W 98 44 38.25



Spend a day hiking and biking through a truly unique landscape dedicated to the recharge of the Edwards Aquifer. Feel connected to the past as you explore the rich ranching heritage of the area and the many live oak savannahs, old-growth Ashe juniper trees, and Spanish moss overhangs. Listen for the rare sound of the endangered golden-cheeked warbler.

Located only 16 miles from downtown San Antonio, and within the city limits, the natural area is an 8,622-acre, undeveloped stretch of land protecting a portion of the aquifer’s recharge zone. Nearly 40 miles of trails range from remote rugged canyon lands to gentle rolling prairies. The visitor’s center complex includes a store, several classrooms, an exhibit gallery and a covered pavilion.

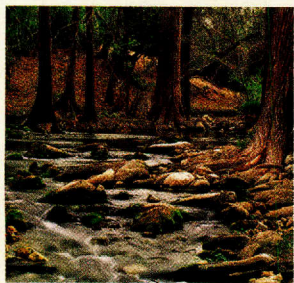
Guadalupe River State Park

3350 Park Road 31, Spring Branch 78070 📞 (830) 438-2656

GPS Latitude N 29 51 11.23 | Longitude W 98 30 15.66



In this Hill Country setting, visitors enjoy the spring-fed Guadalupe River above Canyon Lake Dam. It is one of the more scenic stretches of river in Texas, and popular for summertime tubing, with scenic landscapes of high limestone bluffs. Giant bald cypress, pecan, oak and elm trees, along with a wide variety of shrubs line the river. On a winding transit of the park, the river courses over natural rapids and is a favorite destination for swimming, fishing, hiking and picnicking. The park also provides an excellent put-in and take-out spot for float trips. Due to the potential for flash-flooding, campsites are located on the highlands above the river.



HONEY CREEK STATE NATURAL AREA

This protected natural area is accessible only by scheduled guided walks on Saturdays, or at other times by special arrangements. At Honey Creek, majestic sycamores and bald cypress trees laced with Spanish moss are abundant, and columbine and maidenhair ferns twine among the rocks. Access to Honey Creek SNA is through Guadalupe River State Park.

Kickapoo Cavern State Park

P.O. Box 705, Brackettville 78832 ☎ (830) 563-2342

GPS Latitude N 29 36 30.70 | Longitude W 100 28 27.84



Containing nearly 6,400 acres in the southwestern Hill Country, the park is relatively undeveloped—a natural open space where visitors can find solitude—but offers great activities. This newly renovated park has a network of caverns, including one large enough for guided tours. It also boasts 20 limited campsites, great birdwatching and miles of undeveloped trails for hiking and biking, in addition to Stuart Bat Cave where folks can view spectacular Mexican free-tail bat flights during evenings of warm weather months. Contact the park in advance to schedule a Wild Cave tour.

Lake Brownwood State Park

200 State Highway Park Road 15, Brownwood 76801 📞 (325) 784-5223

GPS Latitude N 31 51 25.20 | Longitude W 99 01 42.85

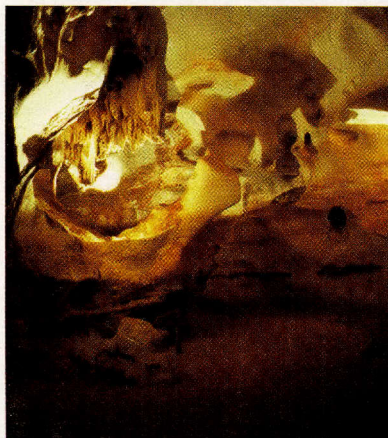


An atmosphere of rustic tranquility and beauty pervades this CCC park with its stone cabins, lodges and historic recreation hall. The locally quarried native rock cast in the outdoor patios and stairs taking visitors to the lake gives the park a timeless feel. Year after year, families return to hold their reunions here in the large group facilities. The 7,300-surface-acre lake attracts swimmers, boating enthusiasts and anglers.

Longhorn Cavern State Park

P.O. Box 732, Burnet 78611 📞 (830) 598-CAVE or (877) 441-CAVE

GPS Latitude N 30 41 04.05 | Longitude W 98 21 3.24

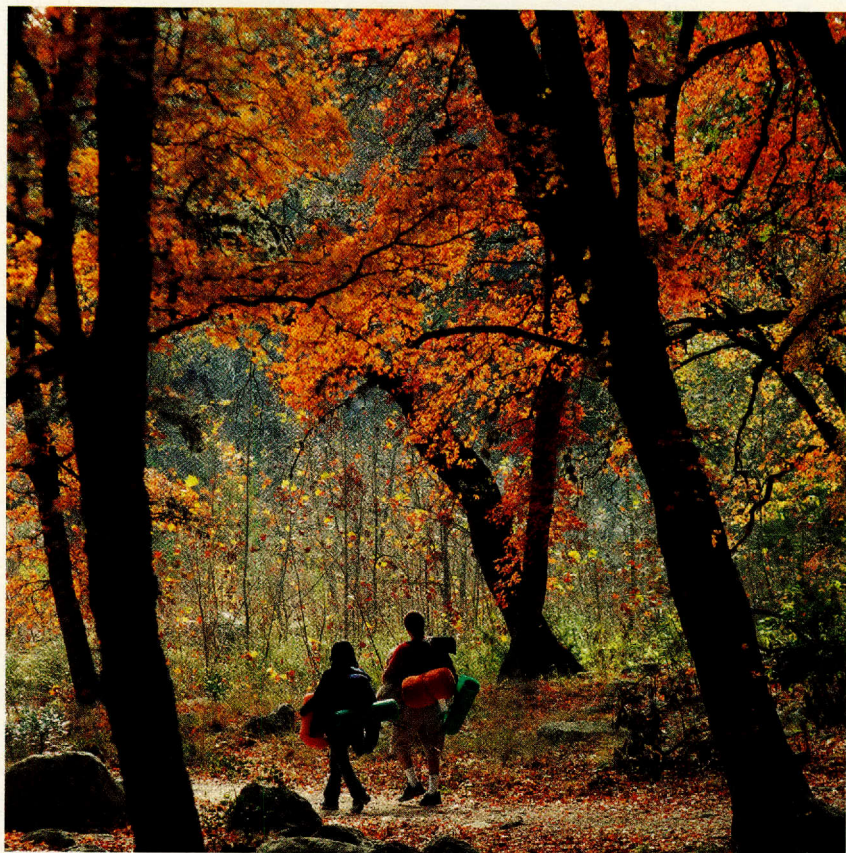


This beautiful cave near Inks Lake was cut long ago by underground streams. Today it stays at a comfortable 68 degrees. Cavern access is limited to tours and special programs, which are offered year-round. Wear comfortable shoes to take the 1-1/4-mile tour through the cave. For the more adventurous, the park offers a "wild" cave tour, an off-the-trail tour to test your physical and mental capabilities. Picnicking and hiking are also options on the surrounding park grounds, and the park offers a full-service deli, snack bar and gift shop.

Lost Maples State Natural Area

37221 F.M. 187, Vanderpool 78885 ☎ (830) 966-3413

GPS: Latitude N 29 48 27.72 | Longitude W 99 34 14.26

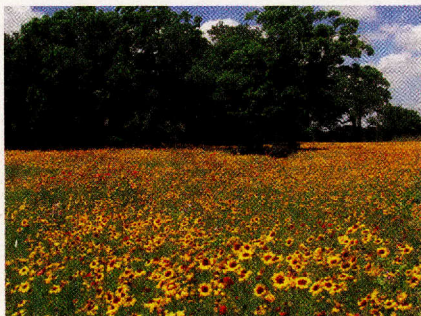


Along the course of the Sabinal River, springs flow through scenic and rugged limestone canyons, filling little ponds with grassy banks, which are perfect places to pitch a backpacker tent. Wildlife thrives everywhere, including the endangered golden-cheeked warbler and black-capped vireo. Hike along the 11 miles of trails up steep canyon cuts to reach several dramatic overlooks. But the star of this 2,200-acre natural area remains a stand of uncommon Uvalde bigtooth maples, relics from the last Ice Age. Large weekend crowds journey here when the maples turn vivid reds and yellows in late October and early November, so it's best to schedule a mid-week trip during this peak season.

Lyndon B. Johnson State Park and Historic Site

P.O. Box 238, Stonewall 78671 ☎ (830) 644-2252

GPS Latitude N 30 14 15.82 Longitude W 98 37 34.75



This popular park is nestled along the banks of the Pedernales River in the beautiful Texas Hill

Country. It honors the 36th president of the United States and the influence he had on rural America. Visitors can view bison, white-tailed deer and Texas longhorn cattle, all of which are pastured within sight along the back roads of the park. The park offers a number of outdoor activities including fishing in the Pedernales River, bird-watching, nature trails and wildlife photography. During the summer, visitors can enjoy a swim in the Olympic-sized swimming pool, tennis or a family baseball game at the ball diamond. Rental facilities include a dining hall and group picnic area. The park is also legendary for its spring and summer wildflowers, which blanket many of the open fields. At the Visitors Center, a short film chronicling President Johnson on his ranch is shown throughout the day and presidential exhibits are on display. Visit the Texas State Park Store for unique Texas Hill Country gifts and presidential related items.



THE SAUER-BECKMANN LIVING HISTORY FARM, also located at LBJ State Park, this working farm recreates Hill Country life as it would have appeared at the turn of the 20th century. Daily demonstrations include milking cows, gathering eggs, cooking on a wood-burning stove and tending livestock, all done by staff in

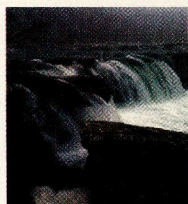
period clothing using historical methods and tools. For groups of 15 or more wishing to have an hour-long interpretive tour of the living history farm, please call ahead for reservations.

Visitors can obtain a permit to tour the ranch administered by the National Park Service at the LBJ State Park Visitors Center Complex; tour stops include Lyndon B. Johnson's birthplace, the Junction School he attended as a child, the Texas White House, and the place of rest of our 36th president.

McKinney Falls State Park

5808 McKinney Falls Parkway, Austin 78744 📞 (512) 243-1643

GPS Latitude N 30 10 50.66 | Longitude W 97 43 18.84

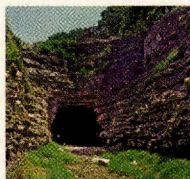


This former homestead of racehorse breeder Thomas McKinney — one of Stephen F. Austin's "Old 300" — is only 13 miles from the State Capitol in Austin. It offers mountain biking, hiking, fishing and camping beneath towering cypress on the banks of Onion Creek. Spring brings a profusion of bluebonnets and other wildflowers and an influx of people leaving urban pressures behind to enjoy the serene beauty and wildlife, such as white-tailed deer that roam the grounds. Swimmers find the pool beneath the falls a welcome treat.

Old Tunnel State Park

102 E. San Antonio, Suite B, Fredericksburg 78624 📞 (866) 978-2287

GPS Latitude N 30.20 24 61 | Longitude W 98.83 07 03

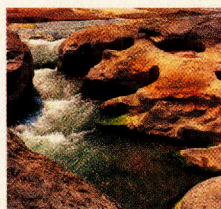


The newest and smallest state park in Texas at just over 16 acres, this once-functioning railroad tunnel is now the seasonal home for up to 3 million Mexican free-tailed bats. While the bats are best viewed between May and October, other activities at this day-use park include birding, interpretive nature walks and stargazing.

Pedernales Falls State Park

2585 Park Road 6026, Johnson City 78636 📞 (830) 868-7304

GPS Latitude N 30 18 29.08 | Longitude W 98 15 27.43



A clear, spring-fed river flowing down gently sloping limestone creates the lovely "falls." While the first three miles, including the falls, are closed to swimming, wading and tubing, other areas of this beautiful river are open to water play. Other spots beckon anglers, while trails through the tree-shaded hills pull birdwatchers and hikers away from the water. The park is home to the endangered golden-cheeked warbler in the spring and the indigenous rufous-crowned sparrow year round. Birdwatchers can seclude themselves in a covered viewing and photography blind with feeders and a drip bath.

South Llano River State Park

1927 Park Road 73, Junction 76849 ☎ (325) 446-3994

GPS Latitude N 30 26 43.72 | Longitude W 99 48 14.79



This delightful riverside park, known for water and wildlife, is located on the western edge of the Edwards Plateau just south of Junction. Visitors can hike, bike and go birding on the trail or experience the South Llano River, deemed by the Lower Colorado River Authority to be one the “most pristine water bodies in the state.” Come enjoy and relax along the riverbank and have a picnic, swim, tube, fish and take kayak/canoe trips. Wildlife watchers can sit in one of four observation blinds to see many varieties of birds and also traverse the park’s trails and into the 2,200-acre wooded hills of the former

Walter Buck Wildlife Management Area which is now a part of the park, for even more great places to see wild turkeys, jackrabbits, deer and numerous bird species. This small, peaceful and family-oriented park offers RV and tent camping and year-round interpretive and educational programs. Park Headquarters are located in the historic Buck homestead, a restored home site circa the late 1800s.

Fort McKavett State Historic Site

P.O. Box 68, Fort McKavett 76841 ☎ (325) 396-2358

This park is under the operation of the Texas Historical Commission.

Kerrville-Schreiner Park

☎ (830) 257-5392 or (830) 257-CAMP

Former state park, now managed by the City of Kerrville, Texas.

Landmark Inn State Historic Site

402 East Florence Street, Castroville 78009 ☎ (830) 931-2133

This park is under the operation of the Texas Historical Commission.

Live Outdoors

When getting ready to hit the trails, there's only one stop for all the gear you need at the best price.



 **Academy**[®]
SPORTS+OUTDOORS

Shop 24/7 at academy.com —



BIG BEND COUNTRY REGION

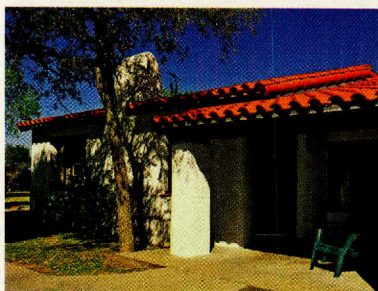
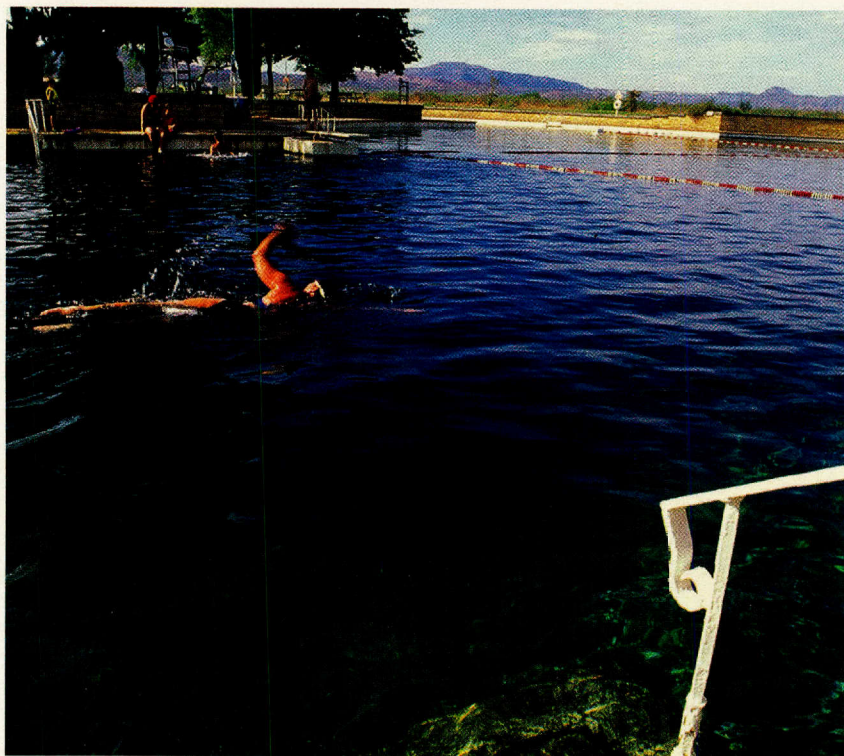


Special thanks to Toyota, whose generous support made this guide possible.

Balmorhea State Park

P.O. Box 15, Toyahvale 79786 📞 (432) 375-2370

GPS Latitude N 30 56 42.21 | Longitude W 103 47 11.79



Dive into the cool waters of the world's largest spring-fed swimming pool, which covers 1.75 acres and stays at 72-76 degrees year round. Scuba divers love the clarity even at a 25-foot depth. In addition to swimming and camping, the San Solomon Courts offer motel-style retro lodging built by the CCC in the 1930s with a Southwestern adobe look; most units have kitchens. Cars along the

Courts lead to a restored ciénega (wetland), where a window built below ground provides a fish-eye's view of the underwater world.

Barton Warnock Visitor Center

HC 70, Box 375, Terlingua 79852 ☎ (432) 424-3327

GPS Latitude N 29 16 11.85 | Longitude W 103 45 14.83



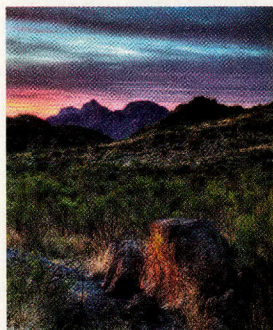
This modern visitor center showcases the Chihuahuan Desert with an English/Spanish bilingual exhibit called “Una Tierra – One Land,” while a two-acre botanical garden outside brings this desert story to life. Five biological landscapes converge in this vast desert that stretches from Texas into Mexico and

reveals 570 million years of geological change. Shop the bookstore or just enjoy a cool break indoors.

Big Bend Ranch State Park

P.O. Box 2319, Presidio 79845 ☎ (432) 358-4444

GPS Latitude N 29 28 12.18 | Longitude W 103 57 29.08



Deep in the mountainous desert wilderness, a 311,000-plus-acre park opens a spectacular landscape to the public. With more than 50 recently developed, primitive campsites and over 200 miles of multi-use trails, Big Bend Ranch State Park has become a premier destination for mountain biking, horseback riding, remote back-country camping, and 4x4 vehicle use. Drive into the park over a 27-mile gravel road that leads through rugged terrain and ends at the former owner’s ranch headquarters at Saucedo. Make reservations to stay in the old ranch house known as the “Big House,” where you can use the kitchen or prearrange for meals featuring regional cuisine. Larger groups can be accommodated at the casual bunkhouse, with separate sleeping areas for men and women.

Davis Mountains State Park

P.O. Box 1707, Fort Davis 79734 ☎ (432) 426-3337

GPS Latitude N 30 35 56.83 | Longitude W 103 55 46.09



Soothing breezes weaving through the mountain passes greet you: on the drive to Davis Mountains State Park in the heart of the Davis Mountains, the most extensive mountain range fully contained in Texas. Find the coolest place in a hot state when you camp in mountains one mile high inside this park built by the CCC. Motor into a full hook-up site (all with cable TV), backpack to a high overlook or make camp under the trees, or check out Indian Lodge, located inside the park. While you're here, visit nearby Fort Davis National Historic Site or attend a "star party" at the McDonald Observatory, where you can see the stars through giant telescopes.

! Operations or access has changed at this park.

texasstateparks.org/access

Devils River State Natural Area

HCR 1, Box 513, Del Rio 78840 📞 (830) 395-2133

GPS Latitude N 29 56 22.84 | Longitude W 100 58 13.18



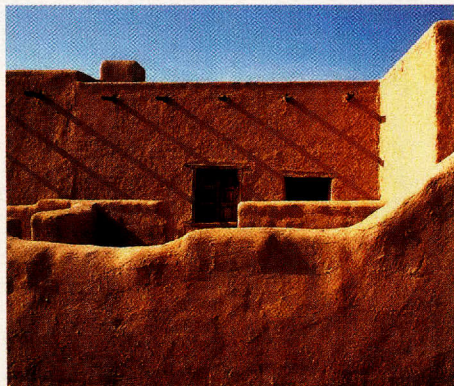
Fed by clear springs that flow from seeps and streams within the region's karst topography, the Devils River is one of the most ecologically intact rivers in Texas, giving life to diverse plants and wildlife. The State Natural Area's large size and remoteness support day hiking, primitive camping, mountain-biking, horseback riding, and guided rock-art and bat-flight tours by appointment.

The wild and scenic Devils River draws experienced kayakers, anglers and canoers. Advance preparation is a must, and all overnight reservations can only be made through the state park central reservation center for the limited primitive camping or rustic bunkhouse accommodations.

Fort Leaton State Historic Site

P.O. Box 2439, Presidio 79845 📞 (432) 229-3613

GPS Latitude N 16 05 4.32 | Longitude W 145 54 4.02



Picnic at this 1848 adobe fortress and trading post on a bluff overlooking the Rio Grande where Ben Leaton dominated trade with the Apaches, Comanches and Mexicans. Today the site is an active museum offering audiovisual programs, reenactments, tours and colorful events. This is the western gateway to Big Bend Ranch State Park. Enjoy the holidays with the annual reenacted *posadas* in December.

Wish you were **HERE.**



TEXAS STATE PARKS

This year, experience all the great things to see and do at more than 90 state parks across Texas. Whether you're visiting for the first time, or coming back to a family favorite, find out what makes this land so unique and our state so grand. Rediscover everything you love about Texas – visit a State Park today.



FREE FISHING IN STATE PARKS

No fishing license required to fish in Texas State Parks.

Life's better outside.™

Everything you love about Texas.

Call or make a reservation today. (512) 389-8900

www.texasstateparks.org



No entry fee for a year for you and carload of guests with the Texas State Parks Pass!

State Parks need your help, now more than ever.

Record drought and devastating wildfires have created a critical situation for Texas State Parks.

You can help keep state parks open by:

- Visiting state parks — your fees pay for about half of all park operating costs
- Making an online donation
- Donating when you register your vehicle, boat or trailer

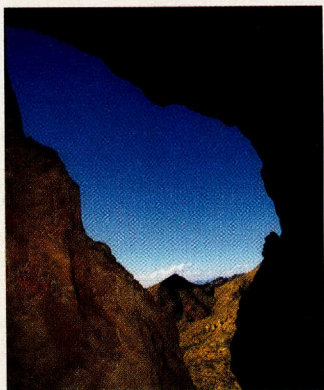
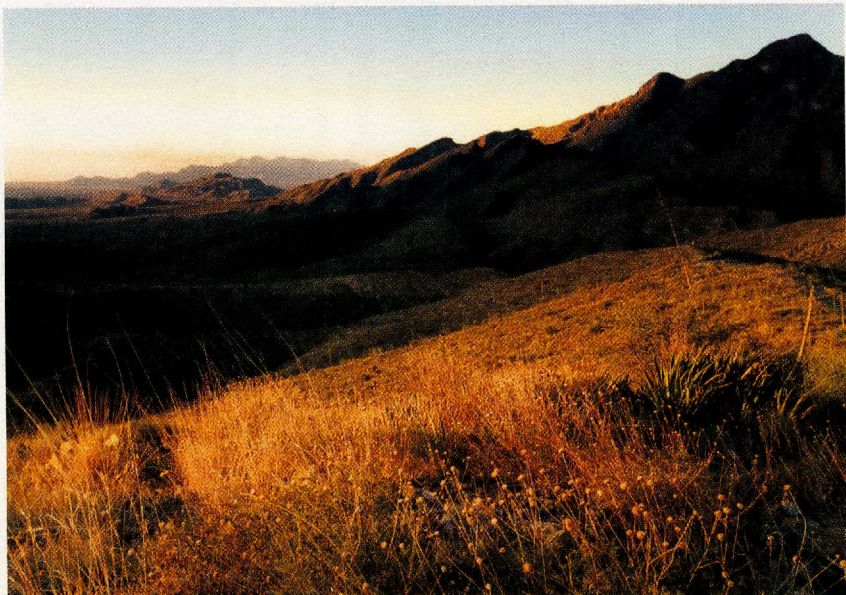


texasstateparks.org/helpmyparks

Franklin Mountains State Park

1331 McKelligon Canyon Road, El Paso 79930 📞 (915) 566-6441

GPS Latitude N 31 55 00.87 | Longitude W 106 31 10.20



At the westernmost tip of Texas, where the mountains meet the sky and cities hug the Rio Grande, Texas boasts the largest state park in an urban setting at more than 24,000 acres in the city of El Paso. Hike rugged terrain in 40 square miles of Chihuahuan desert wilderness, scrub vegetation and open space with 135 miles of multiuse trails that are especially popular with mountain bikers. Camp and picnic, too. While ground fires are not allowed, charcoal fires can be built in grills at the picnic sites.

Hueco Tanks State Park & Historic Site

6900 Hueco Tanks Road No. 1, El Paso 79938 📞 (915) 857-1135

GPS Latitude N 31 55 33.78 | Longitude W 106 02 31.59



This site is named for the natural rock basins in its granite outcroppings that capture rainwater, a precious resource in the Chihuahuan Desert environment. For millennia, people seeking life-giving water and the diverse plants and animals that could be found here left curious and beautiful paintings on the

rocks. Today this ancient site preserves more than 2,000 pictographs that are a wonder to behold.

Because of the sensitive nature of the site, visitation is limited and reservations are recommended for day use, camping and tours. Pictograph tours, hiking tours and bouldering tours in the guided area are available by advance request Wednesday through Sunday.

Indian Lodge State Park

P.O. Box 1707, Fort Davis 79734 ☎ (432) 426-3254

GPS Latitude N 30 35 34.79 | Longitude W 103 56 38.4



Nestled in the Davis Mountains, within Davis Mountains State Park, this southwestern, pueblo style adobe lodge charms with its original handcrafted interiors and furnishings dating from its 1930s construction by the CCC. In addition to the guest rooms with cable TV, telephones and private baths, the lodge has a full-service restaurant, a group meeting room and a swimming pool, making this truly a unique destination and mountain setting.

Monahans Sandhills State Park

P.O. Box 1738, Monahans 79756 📞 (432) 943-2092

GPS Latitude N 31 37 08.00 | Longitude W 102 48 43.52

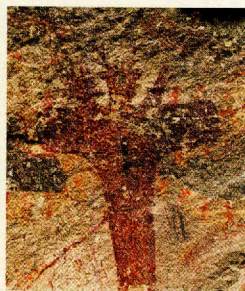
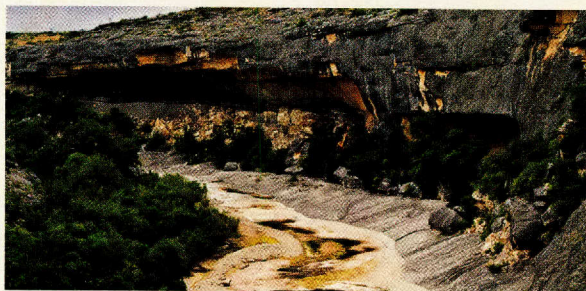


Fun-loving travelers surf the sand dunes that rise as high as 70 feet in this geologic wonderland. These sand dunes are only a small part of a larger 200-square-mile dune field that stretches into New Mexico. Rent sand disks, then visit exhibits that explain the dune dynamics and desert wildlife. Picnicking and camping are also popular at this park, located off I-20 west of Odessa, just east of the town of Monahans.

Seminole Canyon State Park and Historic Site

P.O. Box 820, Comstock 78837 📞 (432) 292-4464

GPS Latitude N 29 42 00.36 | Longitude W 101 18 47.01



Ancient pictographs, rugged limestone terrain and spectacular canyons lure visitors to Seminole Canyon State Park and Historic Site. People of antiquity once lived in these natural rock shelters carved into the canyon walls. They painted distinctive ancient symbols that tell us of their passing. The park contains rock art dated more than 4,000 years old and considered to be some of North America's oldest. Visitors can hike the rugged landscape, take a guided tour into the canyons to see the renowned pictographs in Fate Bell Shelter, camp in a tent or RV, or learn more inside the park's interpretive museum. Seminole Canyon has many stories to tell. Guided rock art tours are available Wednesdays thru Sundays at 10 a.m and 3 p.m. (times may vary during the summer months). Contact the park for more information.



Wyler Aerial Tramway

1700 McKinley, El Paso 79930 📞 (915) 562-9899

GPS Latitude N 31 48 36.50 | Longitude W 106 28 39.79



Glide to the top of Ranger Peak inside Franklin Mountains State Park in an airborne Swiss gondola. From a mile-high seat in the sky, see Mexico, New Mexico and the City of El Paso unfold below you. Souvenirs, snacks, books and gifts are available at the Observation Deck on top. After dark, catch the panorama of El Paso and its gold- and silver-hued lights against a dramatic desert backdrop.

Fort Lancaster State Historic Site

P.O. Box 306, Sheffield 79781 📞 (432) 836-4391

This park is under the operation of the Texas Historical Commission.

Magoffin Home State Historic Site

1120 Magoffin Avenue, El Paso 79901 📞 (915) 533-5147

This park is under the operation of the Texas Historical Commission.

STATE PARK USER FEES

During a normal park visit, one or all of these fees may apply:

Entrance Fee - a fee paid for day use that includes the opportunity to enjoy such activities as picnicking, wildlife viewing, hiking, swimming, boating, canoeing, fishing, tubing or participating in various park programs. Admission to Texas State Parks is free for kids 12 and under.

Facility Fee - a fee paid to stay overnight at a campsite, in a cabin or guest room, or to use a group facility, meeting room or pavilion.

Activity Fee - a fee paid to participate in a special activity, tour a historic site, or ride the ferry or tram.



Texas State Parks Pass

You can waive all entrance fees and get unlimited visits to more than 90 state parks for you and your carload of guests (good for 12 months). Plus get discounts on camping, park store merchandise and more. Each pass is \$70, or a two-pass card option is available for \$85.

Parklands Passport "Bluebonnet Pass"


The Texas Legislature has developed a passport program for qualifying seniors, persons with disabilities and disabled U.S. veterans. Individuals who qualify for this pass must present proof of qualifying benefit at any state park office to receive the Parklands Passport that entitles them to receive discounted or waived entrance fees to state parks where entrance fees are collected. The Parklands Passport is free and available only to those who qualify.

Note: The State of Texas does not recognize the annual pass programs of other state parks systems or pass programs of the National Park Service.

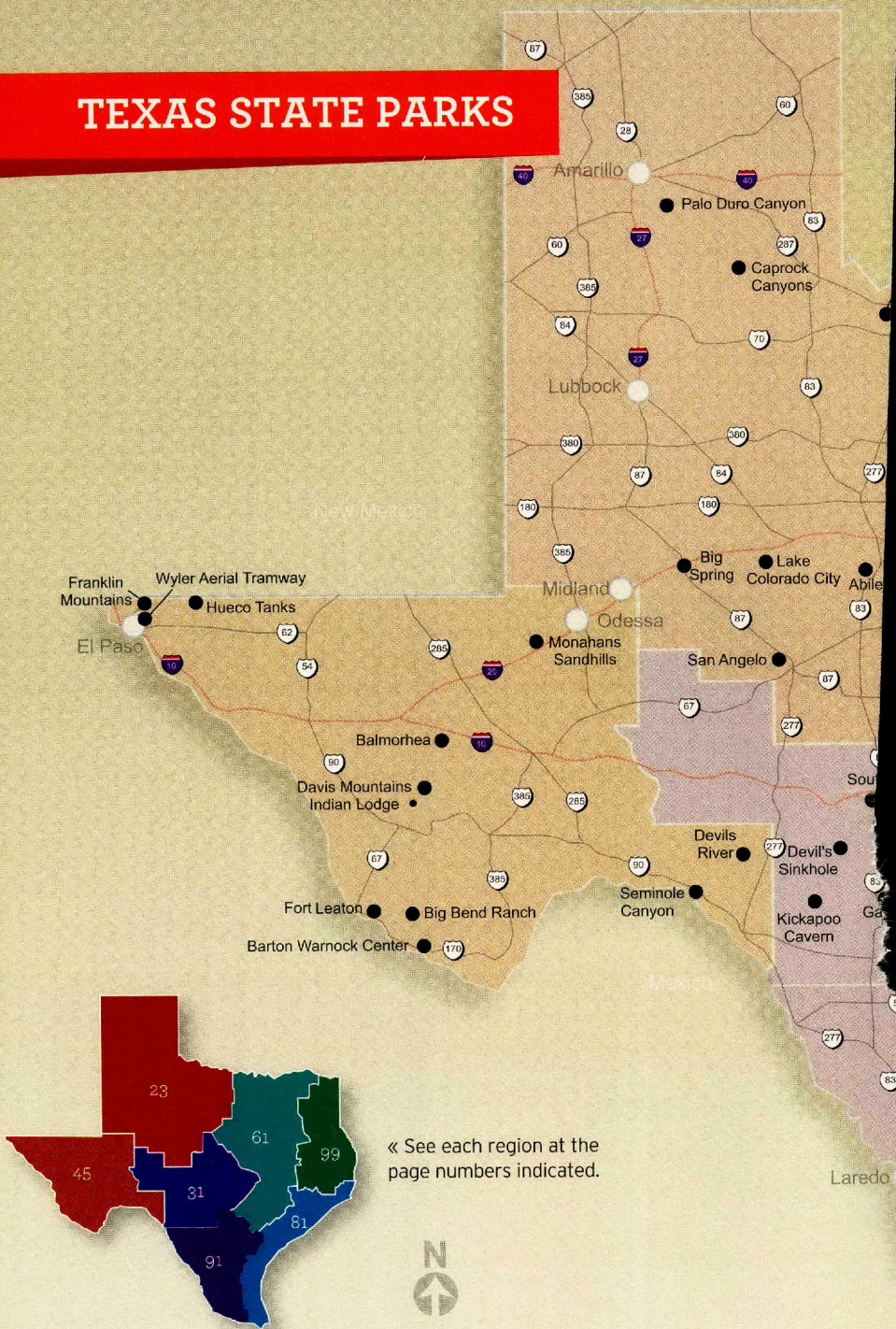
STATE PARK RESERVATIONS
(512) 389-8900*

Or reserve online at www.texasstateparks.org

* Important: Reservations must always be made directly with the park when there are fewer than 24 hours between the time you are making a reservation and your expected arrival time to the park. This State Park Directory has contact information for each park.

 facebook.com/texasparksandwildlife

TEXAS STATE PARKS



Bentsen-Rio Gra



Special thanks to Toyota, whose generous support made this guide possible.



Some discounts, coverages, payment plans and features are not available in all states or all GEICO companies. Motorcycle and ATV coverages are underwritten by GEICO Indemnity Company. GEICO is a registered service mark of Government Employees Insurance Company, Washington, D.C. 20076; a Berkshire Hathaway Inc. subsidiary. GEICO Gecko

How could your hobby save you even more money with GEICO?

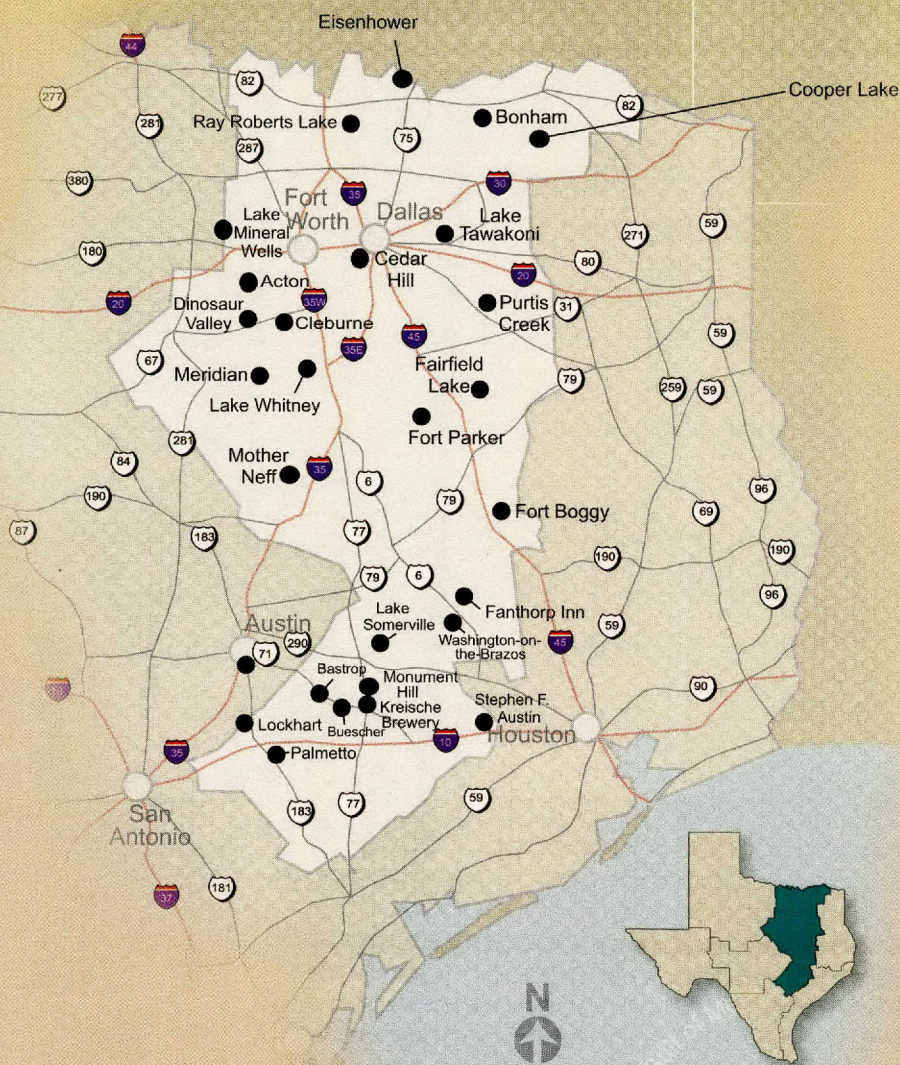
At GEICO, we don't just help cover motorcycles, ATVs, personal watercraft, boats and RVs. We're enthusiastic about them – just like you. After all, when you're out having fun, insurance should be the last thing on your mind. And don't forget, we'll also cover that car or truck you use to haul your toys around. **You could save even more with a Multi-Policy Discount when you insure more than one vehicle with GEICO.**

See what it's like to have real enthusiasts looking out for you – check out GEICO today.

GEICO[®]
geico.com
1-800-947-AUTO



PRAIRIES AND LAKES REGION



Special thanks to Toyota, whose generous support made this guide possible.

Bastrop State Park

P.O. Box 518, Bastrop 78602 ☎ (512) 321-2101

GPS Latitude N 30 06 36.61 | Longitude W 97 17 12.98



Located just east of Austin, Bastrop is set among the “Lost Pines,” believed to have once been part of an extensive pine-oak forest in Central Texas. The fully equipped cabins and group facility were constructed by the CCC in the 1930s using local sandstone so that the structures seem to be a natural part of the landscape. In September 2011, the park was stricken by wildfire that affected 96

percent of the park. However, firefighters were able to save the historic CCC structures. The park is recovering from the fire, and most trails, campsites and facilities have reopened to the public. In addition to the nature trails and fishing along the banks of the small park lake, there is an 18-hole golf course and a large, oval-shaped swimming pool.

Bonham State Park

1363 State Park 24, Bonham 75418 📞 (903) 583-5022

GPS Latitude N 33 32 48.15 | Longitude W 96 08 40.27



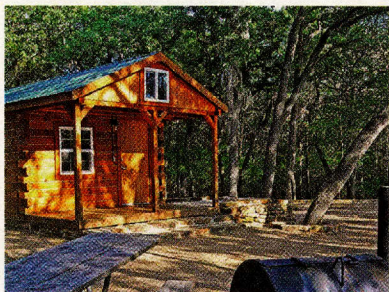
Escape to the laid-back atmosphere of this quiet park surrounding a 65-acre lake, located just northeast of the Dallas metro area. Water activities include boating, canoeing, swimming and fishing. A fishing pier provides visitors with an added opportunity to fish. A gently rolling terrace is dominated by tall, mature trees that cover the area, making it perfect for hiking, walking, picnics or just relaxing. Developed campsites

and a group complex enhance overnight stays. Raccoons, squirrels, rabbits and numerous songbirds are among the wildlife in the park. A newly renovated indoor complex sleeps 94 and includes a game room.

Buescher State Park

P.O. Box 75, Smithville 78957 📞 (512) 237-2241

GPS Latitude N 30 02 20.90 | Longitude W 97 09 29.66



Buescher State Park is joined to Bastrop State Park by a 12-mile road that is perfect for biking or a leisurely drive. Both parks are located in the “Lost Pines,” believed to have once been part of an extensive pine-oak forest in Central Texas. Rent canoes or hike along the 7.7-mile loop trail through the forest. Fishing is excellent in the small woodland lake that is stocked for

anglers. Camp in the peaceful quiet along the lake or at campsites set back in the forest. A CCC-built group facility is also available for rent, as are three limited-service cabins.

Cedar Hill State Park

1570 West F.M. 1382, Cedar Hill 75104 📞 (972) 291-3900

GPS Latitude N 32 37 18.19 | Longitude W 96 58 44.86



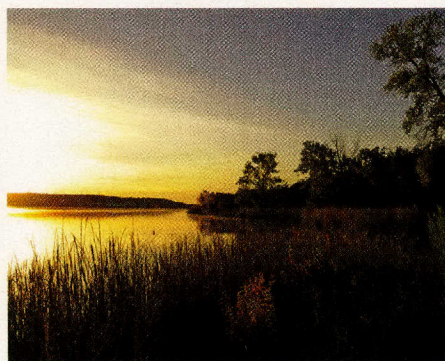
Minutes southwest of downtown Dallas, this park has 10 lanes of boat ramps giving access to the 7,500-acre Joe Pool Reservoir. Crowds are easily accommodated at the more than 300 developed and walk-in campsites. The Dallas Off-Road Bicycle Association built 15 miles of biking trails that crisscross the varied terrain and suit novices and experts alike. Because the park was developed at the site of a 19th-century

farm, a number of buildings have been restored to recreate the old Penn Farm farmstead and provide insight into the land as it was before the DFW Metroplex grew so large. Penn Farm is open daily for self-guided tours that take visitors through the old barns and outbuildings.

Cleburne State Park

5800 Park Road 21, Cleburne 76033 📞 (817) 645-4215

GPS Latitude N 32 15 8.46 | Longitude W 97 32 58.63



Wildlife abounds at this park, which is ideal for camping or day use, located just outside the city of Cleburne, southwest of the Fort Worth area. Animals scurry through the woods, and in early spring, bluebonnets blanket the open fields, creating picture-perfect picnic settings. Hike-and-bike trails zigzag through limestone hills, canyons and ruggedly beautiful wooded terrain. Enjoy the clear, spring-fed

lake created by an earthen dam with a charming, three-level spillway or catch a glimpse of beavers as they build a dam.

Cooper Lake State Park

Doctors Creek Unit, 1664 F.M. 1529 South, Cooper 75432 📞 (903) 395-3100

GPS Latitude N 33 20 57.08 | Longitude W 95 39 52.02

South Sulphur Unit, 1690 F.M. 3505, Sulphur Springs 75482 📞 (903) 945-5256

GPS Latitude N 33 17.268 | Longitude W 95 39.469



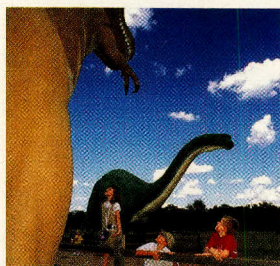
Cooper Lake offers a variety of both land- and water-based recreational opportunities. Visitors can enjoy the breathtaking sunsets and spectacular scenery by boat, foot or horseback. Or, picnic under towering oak trees, swim at the sandy beach, explore devel-

oped trails, or boat and fish on the 19,300-acre lake. Overnighters can choose from cabins, shelters and developed or primitive campsites, including equestrian sites for horses. Both the South Sulphur and Doctors Creek units offer limited-service cabins. Wildlife watchers are often rewarded with sightings of bald eagles, white pelicans, wild turkey, waterfowl, white-tailed deer, squirrels, raccoons and beavers. Together, both park units encompass 3,026 acres and some 31 miles of shoreline; canoe rentals have been added as well.

Dinosaur Valley State Park

1629 Park Road 59, Glen Rose 76043 📞 (254) 897-4588

GPS Latitude N 32 14 46.50 | Longitude W 97 48 48.13



Take the kids to put their little feet in the world-renowned dinosaur footprints in the Paluxy riverbed. The trackway dates to the Cretaceous period 113 million years ago and was an important clue for paleontological theories about how and where dinosaurs walked. Since the riverbed tracks are only visible when the water is low, a replica in the park's exhibit is also available for viewing. Great hiking and biking trails meander through

the uplands with trailheads near the campgrounds. This park enjoys year-round popularity with mountain bikers, campers and RVers.

Wish you were HERE.

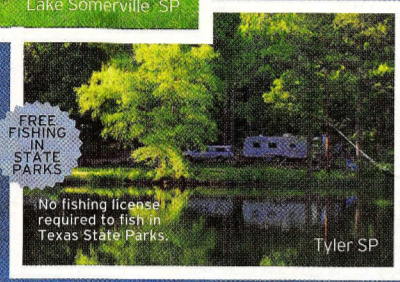
TEXAS STATE PARKS



Lake Somerville, SP



Monahans, SP



FREE FISHING IN STATE PARKS

No fishing license required to fish in Texas State Parks.

Tyler, SP

This year, experience all the great things to see and do at more than 90 State Parks across Texas. Whether you're visiting for the first time, or coming back to a family favorite, find out what makes this land so unique and our state so grand. Rediscover everything you love about Texas - visit a State Park today.



ONLY \$70 PER CARD MEMBERSHIP

\$85 (with camp membership)

No entry fee for a year for you and carload of guests with the Texas State Park Pass!



Life's better outside.

Everything you love about Texas. Call or make a reservation today. (512) 389-8900 texasstateparks.org

Stay in touch.



Texas State Parks, at your fingertips.

Sign up and receive Texas state park videos, photos, and magazine stories, the bi-monthly State Parks Getaways E-newsletter, and more!



Life's better outside.

www.tpwd.state.tx.us/email

Things to do with your kids outside



Another way to have fun with the kids is to explore nature in a Texas State Park. Here are a few ideas to help you get started.

1. Attend a ranger-led program.
2. Hike a nature trail.
3. Look for animal tracks.
4. Find a park with the Tackle Loaner Program and catch a fish.
5. Visit a nature center.
6. Camp with a park ranger at a Texas Outdoor Family workshop.
7. Visit a historical park to learn about the history of Texas.
8. Scoop up and examine critters from a river.
9. Take pictures of wildlife.
10. Swim at a lake.
11. Build a sand castle.
12. Make a leaf rubbing.
13. Count how many different birds you see.
14. Go for a bike ride.
15. Go on an alphabet hike and see how many things you can find using the ABCs.
16. Rent a kayak or canoe for the day.
17. Identify an insect.
18. Help the park by picking up trash.
19. Draw a map of the park.
20. Write about it all in a journal!



Life's better outside.



Healthier, Happier, Smarter.

State Park MAP



Convenient Pull-out Map

texasstateparks.org/helpmyparks



- Donating when you register your vehicle, boat or trailer
- Making an online donation
- Visiting state parks often - your fees pay for about half of all park operating costs

You can help keep state parks open by:

Record drought and devastating wildfires have created a critical situation for Texas State Parks.

Your parks need more help, now than ever.

LA QUINTA INNS & SUITES

BOOK YOUR NEXT STAY AT LA.COM/TXPARKS



We're proud to call Texas home, and we're proud to be the hotel travelers can count on for great value and comfort. Our rooms feature spacious work areas, comfy pillowtop beds, HDTVs with the latest plug-and-play technology and FREE Bright Side Breakfast.



LA QUINTA HAS TEXAS STATE PARKS WITH OVER 200 LOCATIONS STATE WIDE



To learn more, call (512) 389-8903, or visit texasstateparks.org/for

Workshops are hosted at state parks and partner sites for hands-on experience with basic outdoor skills such as camping, outdoor cooking, geocaching and (depending on the park) various activities such as kayaking, fishing or wildlife watching.




The Texas Outdoor Family program is designed to teach you and your family the basic outdoor skills you need to enjoy a great overnight camping experience, no experience necessary!

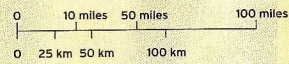
Admit it. Camping looks like fun. You'd like to try it, but you have questions. We can help!

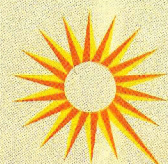


Find yourself in Texas State Parks!



-  Texas State Parks
-  Inland and Coastal Fisheries Centers
-  La Quinta Inns & Suites® locations




LAQUINTA
 INNS & SUITES

La Quinta has our state covered
 with the most hotel rooms in Texas.

 **TOYOTA**
 Proud Sponsor

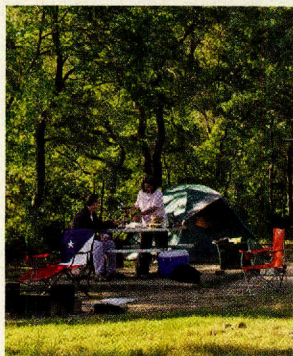
TEXAS
PARKS &
WILDLIFE

Life's better outside.®

Eisenhower State Park

50 Park Road 20, Denison 75020-4878 📞 (903) 465-1956

GPS Latitude N 33 48 37.11 | Longitude W 96 35 59.92



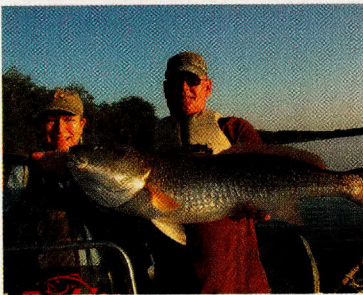
The park's heavily forested shoreline of rolling hills and limestone bluffs has been called the Texas North Coast. It overlooks Lake Texoma, the 89,000-surface-acre watery playground for yachts, sailboats and every kind of splashing recreation. Park visitors have access to the lake via public boat ramps and a privately run, full-service marina with boat rentals. A seven-acre ATV area is popular with dirt bikers, four-wheelers and go-cart riders. Wooded campsites accommodate RVs and tents and offer screened shelters and group facilities. Eisenhower welcomes travelers coming from

the north, as it's located just across the Texas-Oklahoma state line but is also within an hour of the Dallas-Fort Worth Metroplex. The huge lake is also legendary for fishing, especially for striped bass, smallmouth and catfish.

Fairfield Lake State Park

123 State Park Road 64, Fairfield 75840 📞 (903) 389-4514

GPS Latitude N 31 45 55.11 | Longitude W 96 04 23.37



The waters of Fairfield Lake are warmed because they cool an electrical power plant, and that means fantastic winter fishing from November through February. The lake is stocked with red drum (redfish) and holds a state record for a 36.83-pound, 44-inch, inland red drum. Within a few hours' drive of Dallas/Fort Worth, Houston and Waco, the park offers lakefront camping and walk-in primitive campsites.

In the winter, one can spot bald eagles diving for their favorite food.

Fanthorp Inn State Historic Site

P.O. Box 296, Anderson 77830 ☎ (936) 873-2633

GPS Latitude N 30 28 58.62 | Longitude W 95 59 02.11



Operations
or access has
changed at
this park.

texasstateparks.org/
access



The carefully restored Fanthorp Inn offers visitors an opportunity to walk through a historic inn that served as a stagecoach stop. A communal dining table is set for a meal, frozen in time, conveying a real sense of the traveler's life in the 1850s. A replica of a Concord stagecoach completes the scene. Picnic tables are set under towering trees on the lawns surrounding the inn, ideal for an afternoon outing.



Fort Boggy State Park

4994 Hwy. 75 South, Centerville 75833 ☎ (903) 344-1116

GPS Latitude N 31 11 14.38 | Longitude W 95 58 28.77



Spend the day picnicking, fishing or just taking in the natural beauty of this quiet and serene day-use park. Set beside a picturesque lake well-suited to canoes, kayaks or small boats, the park has a beautiful beach and nature trails, as well as an ADA-compliant, open-air picnic pavilion. The park is conveniently

located just off IH-45 between Dallas and Houston.

Fort Parker State Park

194 Park Road 28, Mexia 76667 ☎ (254) 562-5751

GPS Latitude N 31 35 32.56 | Longitude W 96 31 35.79

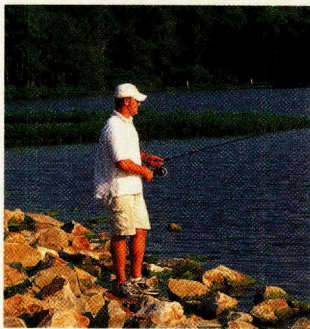


This beautiful wooded park on the Navasota River is a relaxing getaway within a few hours' drive from major metro areas. It is conveniently located between Dallas-Fort Worth to the north and Houston or Austin to the south. The park has a fishing pier on a 700-acre lake, hike-and-bike trails, a nature center, and rental canoes and kayaks. Enchanting wildflowers, such as Texas bluebonnets, diamond petal primrose, wine cups and Indian blankets, abound from March to early June. The park is also quite popular with families and RVers, as there are screened shelters and a recreation hall that serves all kinds of groups. The group barracks sleep up to 96 people! Primitive campsites are also available.

Lake Tawakoni State Park

10822 F.M. 2475, Wills Point 75169 📞 (903) 560-7123

GPS Latitude N 32 50 31.12 | Longitude W 95 59 37.53



This park is one of the newer overnight camping parks added to the Texas State Parks system. The 351-acre park sits along the shores of the 36,700-acre Lake Tawakoni reservoir with five miles of hike-and-bike trails, five miles of shoreline and a four-lane boat ramp located in a picturesque, hardwood sylvan setting, just east of the Dallas-Fort Worth area. The park features 78 campsites; two large picnic areas with tables and grills and more than eight miles of hike-and-bike trails. It also has a youth group area (primitive camping)

that can be reserved for groups of up to 48. The park's more than 40 acres of native prairie grassland is rare for East Texas and serves as habitat for some of the over 250 bird species identified in the park.

Lake Whitney State Park

P.O. Box 1175, Whitney 76692 📞 (254) 694-3793

GPS Latitude N 31 55 52.60 | Longitude W 97 21 24.73

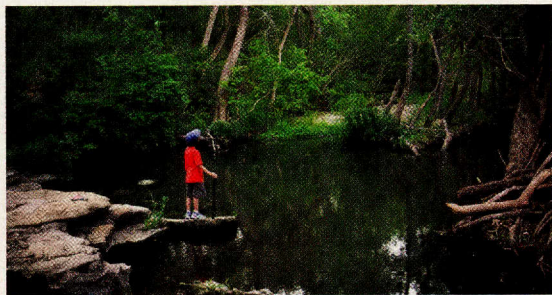


Boating, water skiing, sailing, fishing, scuba diving and swimming take center stage at this 23,000 surface-acre reservoir with the park's boat ramps, lakefront beach, shoreline fishing and record-size catfish, largemouth and smallmouth bass and striper. Camp at this lovely park and enjoy hiking or biking trails to catch sight of a variety of birds — some 194 species have been identified here.

Lockhart State Park

4179 State Park Road, Lockhart 78644-9716 📞 (512) 398-3479

GPS Latitude N 29 51 19.58 | Longitude W 97 41 51.93



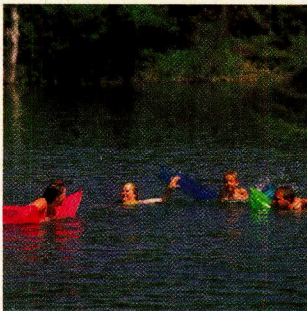
This small rustic park is set in a rolling forested terrain. The large, secluded hilltop refectory — built by the CCC in the 1930s era — is a perfect setting for reunions, parties and weddings. For the golf enthusiast, there is a quaint nine-hole golf course (club and cart rental available), a small campground popular with RVers, a swimming pool, a park store and a creek for avid anglers.

Meridian State Park

173 Park Road 7, Meridian 76665 ☎ (254) 435-2536

GPS

Latitude N 31 53 26.73 | Longitude W 97 41 50.92

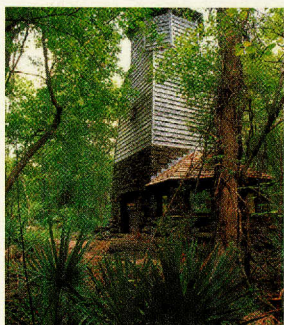


This wooded 505-acre park prides itself on its relaxing atmosphere and outstanding fishing. The park surrounds a 72-acre lake that is excellent for catching largemouth bass, catfish, crappie and bream. Trails for hiking take birders out to search for additions to their lifetime lists, including the endangered golden-cheeked warbler. Complete group facilities with shelters host family reunions and special group outings throughout the year.

Palmetto State Park

78 Park Road 11 South, Gonzales 78629 📞 (830) 672-3266

GPS Latitude N 29 35 48.91 | Longitude W 97 35 06.14



Named for the dwarf palmetto plants found throughout the park, this 289-acre riparian refuge resembles the tropics more than the surrounding brush country. This botanical wonderland attracts more than 200 bird species. A historic pump forces artesian water into a 1930s-era cistern and water tower for release into a swampy woodlands along a nature trail. The San Marcos River flows through the park, making it a perfect take-out point for canoe trips that start in Luling 14 miles upriver. The park also boasts a great network of trails and boardwalks.

Purtis Creek State Park

14225 F.M. 316, Eustace 75124 📞 (903) 425-2332

GPS Latitude N 32 21 13.93 | Longitude W 95 59 36.88



This large 1,582-acre park is known for its heavily-wooded, well-shaded campsites and its exceptional bass fishing. The clear-water impoundment was actually designed for trophy largemouth, with catch-and-release regulations for this species. The 355-surface-acre lake is limited to 50 boats at a time. Canoe and paddleboat rentals are also available at the park store.

Park Units of Ray Roberts Lake SP

Isle du Bois

100 PW 4137, Pilot Point 76258-8944 📞 (940) 686-2148

GPS Latitude N 33 21 54.43 | Longitude W 97 00 50.68

A full-service park with a six-lane boat ramp. It also has equestrian and walk-in campsites, a swimming beach and a lighted fishing pier. The park store is open from spring break through November.

Johnson Branch

100 PW 4153, Valley View 76272-7411 📞 (940) 637-2294

GPS Latitude N 33 25 46.88 | Longitude W 97 03 23.29

A full-service park with a four-lane boat ramp, campsites and accessible trails that are ADA compliant. The park store is open from spring break through November.

Jordan Park

F.M. 1192, Pilot Point 76258 📞 (940) 686-0261

GPS Latitude N 33.41 | Longitude W 97

Home to Lantana Lodge, a luxurious lodge overlooking the lake. The modern hotel has 30 rooms, a restaurant as well as a conference center that can accommodate up to 100 people. There's also a four-lane boat ramp for lake access.

Ray Roberts Greenbelt Corridor

100 PW 4137, Pilot Point 76258-8944 📞 (940) 686-2148

GPS Latitude N 33 21 3.90 | Longitude W 97 2 6.51

A 20-mile trail system meanders along the heavily wooded banks of the Elm Fork of the Trinity River. It is suited to hiking, equestrian trail riding and paddling. Canoe and kayak rentals are available at Greenbelt Canoe Rentals, (817) 228-9496.

Sanger Marina Unit

1399 Marina Circle, Sanger 76226 📞 (940) 458-7343

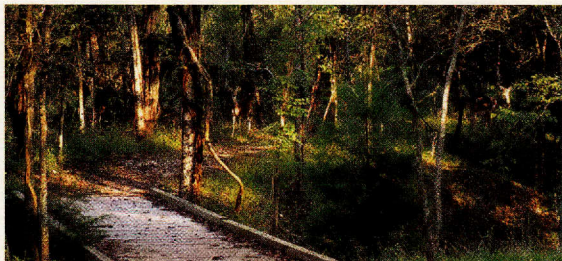
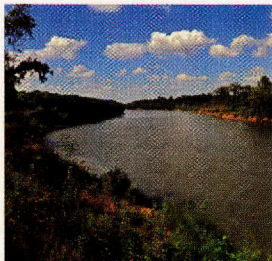
GPS Latitude N 33.22 | Longitude W 97.06

A full-service marina, Lake Ray Roberts Marina, is located here and features four boat lanes, boat rentals, a fishing barge and courtesy dock.

Stephen F. Austin State Park

P.O. Box 125, San Felipe 77473-0125 📞 (979) 885-3613

GPS Latitude N 29 48 43.09 | Longitude W 96 06 28.90



Located in the birthplace of Anglo-American settlement in Texas, the park occupies moss-draped pecan bottoms along the Brazos River and the Mexican land granted to Stephen F. Austin, the “Father of Texas.” This historic 1823 settlement was also home to Texas’ first English-language newspaper, the first Texas postal system, and the original Texas Rangers. The park offers a wide variety of camping including 40 full hook-up sites, 40 water-only sites, 12 walk-in primitive campsites, 20 screened shelters, group facilities and a day-use recreation hall. Opportunities abound for birding and wildlife viewing, fishing along the riverbank, and hiking and biking along five miles of trails. Plan on visiting nearby San Felipe de Austin Historic Site, operated by the Texas Historical Commission. Come experience where it all started.

Washington-on-the-Brazos State Historic Site

P.O. Box 305, Washington 77880-0305 📞 (936) 878-2214

GPS Latitude N 30 19 32.77 | Longitude W 96 09 15.94



While Santa Anna’s army besieged the Alamo in March 1836, Texians met in an unfinished building at Washington-on-the-Brazos to declare independence from Mexico. Two weeks later, the delegates adopted a constitution for the Republic of Texas in the middle of the night. Today, visitors enjoy the many exhibits at the Visitor Center and at the Star of the Republic Museum, which houses a collection of more than 20,000 artifacts. Visitors can also tour a replica of the building where

the Texas Declaration of Independence was signed. A conference center, group meeting facilities and two pavilions are available by reservation. This picturesque park is also a favorite spot for picnics.



BARRINGTON LIVING HISTORY FARM is a working 1850s cotton farm in the Brazos Valley. Using the home and journals of Dr. Anson Jones, the last president of the Republic of Texas, period costume interpreters work the farm as it was done long ago so folks can experience the sights, sounds and smells of the 19th century.

Confederate Reunion Grounds **State Historic Site**

194 Park Road 28, Mexia 76667 ☎ (254) 562-5751

This park is under the operation of the Texas Historical Commission.

Eisenhower Birthplace **State Historic Site**

609 South Lamar, Denison 75021 ☎ (903) 465-8908

This park is under the operation of the Texas Historical Commission.

Sam Bell Maxey House **State Historic Site**

812 South Church Street, Paris 75460 ☎ (903) 785-5716

This park is under the operation of the Texas Historical Commission.

Sebastopol House **State Historic Site**

P.O. Box 900, Seguin 78156 ☎ (830) 401-2480

A unique, concrete-like constructed home from the late 1840s, this site is now operated by the city of Seguin, Texas.



facebook.com/texasparksandwildlife

GULF COAST REGION

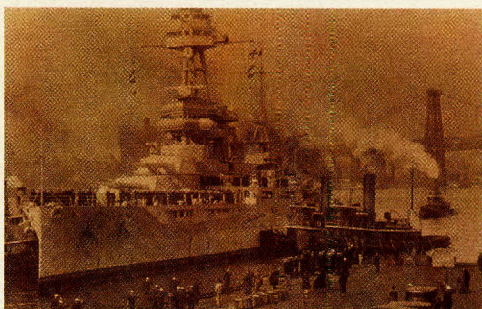
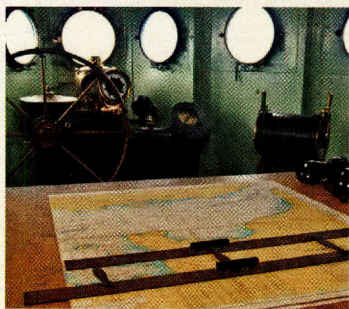
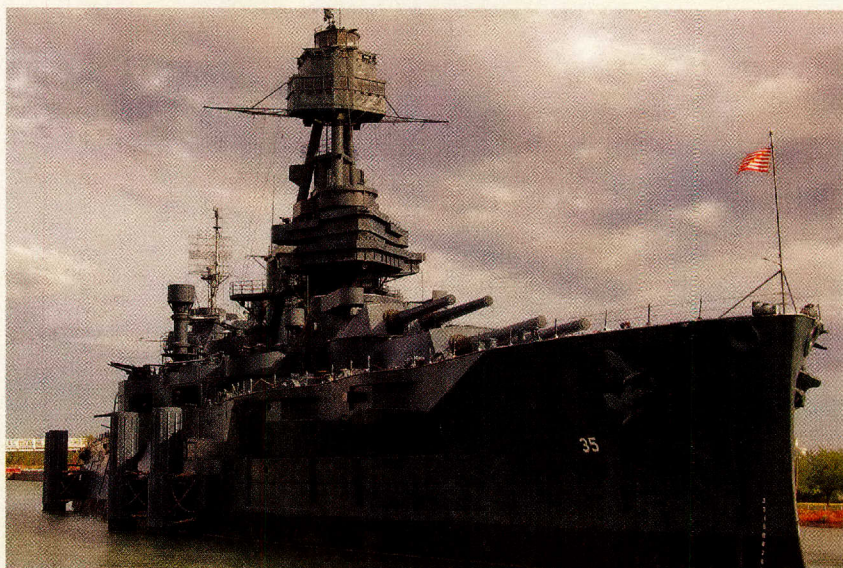


Special thanks to Toyota, whose generous support made this guide possible.

Battleship TEXAS State Historic Site

3523 Independence Parkway South, La Porte 77571 📞 (281) 479-2431

GPS Latitude N 29 45 05.72 | Longitude W 95 05 23.64



Located at San Jacinto Battleground, Battleship TEXAS is the last surviving Dreadnought-type ship in the world and is the only remaining battleship to have served in both World Wars. When she was commissioned in 1914, the vessel was considered the most advanced military weapon on the planet. During her service, TEXAS was modernized many times with the latest in cutting-edge technology and was the first U.S. battleship to launch an aircraft, mount anti-aircraft batteries and have radar installed.

Brazos Bend State Park

21901 F.M. 762, Needville 77461 ☎ (979) 553-5101

GPS Latitude N 29 22 15.16 | Longitude W 95 37 54.58



Named one of America's top state parks by National Geographic Traveler Magazine, this park includes almost 5,000 acres of lakes, prairies and bottom-land hardwood forests. Areas of huge live oak trees draped in Spanish moss provide shade to the park's three day-use areas. Thirty-five miles of multi-use trails, spanning a diverse ecology, offer

visitors prime viewing of alligators, whitetail deer and more than 300 species of birds. Three small lakes and a winding, tree-lined creek offer places to fish. Touch a "baby" alligator at the park's nature center, which is open daily. Nature programs are offered every weekend and most holidays. The George Observatory is also located within the park and has four large telescopes for star parties on Saturday nights.

Galveston Island State Park

14901 F.M. 3005, Galveston 77554 ☎ (409) 737-1222

GPS Latitude N 29 11 55.10 | Longitude W 94 57 23.40



Galveston Island SP experienced extensive hurricane damage in 2008. Camping and day use has been restored to both the beach side and bay side. Both areas also have restroom facilities, and the beach side also has tables, grills and showers. Plans are to eventually rebuild a redesigned Galveston Island State Park.

Goose Island State Park

202 S. Palmetto Street, Rockport 78382 📞 (361) 729-2858

GPS Latitude N 28 08 00.67 | Longitude W 96 59 03.44

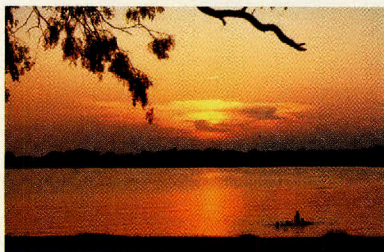


Brown pelicans, rare whooping cranes and fishing in the bountiful waters of Aransas, Copano and St. Charles Bays draw visitors to Texas' first coastal state park. Protected from coastal storms, the park is located on the southern tip of the Lamar Peninsula and is dominated by dramatic wind-sculpted trees and is home to the "Big Tree," a massive coastal live oak estimated to be more than 1,000 years old and one of the natural wonders of Texas. Goose Island features camping areas overlooking Aransas Bay or beneath the shade of live oak groves.

Lake Corpus Christi State Park

P.O. Box 1167, Mathis 78368 📞 (361) 547-2635

GPS Latitude N 28 03 47.23 | Longitude W 97 52 20.20



Swimming, boating, waterskiing and sailboarding fill summer hours on this large placid lake, while angling for black bass, striped bass, crappie and catfish are year-round pleasures. The CCC built an impressive caliche crete open-air refectory with arched walls and a tower that affords excellent views over the lake.

Lipantitlan State Historic Site

Day use only, c/o Lake Corpus Christi State Park. 📞 (361) 547-2635

GPS Latitude N 27 57 53.99 | Longitude W 97 49 4.79

Named for the Lipan Apache and the 1835 battle between Texian insurgents and the Mexican Army, this historic site also offers picnicking and nature study.

Lake Texana State Park

46 Park Road 1, Edna 77957 ☎ (361) 782-5718

GPS Latitude N 28 57 16.56 | Longitude W 96 32 49.23



A tranquil escape found halfway between Houston and Corpus Christi, the calming waters of Lake Texana offer complete water recreation activities from fishing, boating, and water skiing to an ADA-compliant fishing jetty, lighted fishing piers and even canoes and kayaks for rent. A six-mile hike-and-bike trail offers several access points to help provide a great outdoor adventure and allows you to choose the length of time you wish to be on the trail. Enjoy spacious campsites that provide great opportunities to view wildlife, or bring a picnic and take advantage of the tree-shaded day-use area.

Mustang Island State Park

P.O. Box 326, Port Aransas 78373 ☎ (361) 749-5246

GPS Latitude N 27 40 24.13 | Longitude W 97 10 29.71



Seaside beaches stretch for five miles along the open Gulf of Mexico, inviting a perfect summer-at-the-shore experience. This is truly one of the best places to see coastal marine life, from green sea turtles to blue herons. Reservations are recommended for campsites with water and electricity. Primitive beach camping is on a first-come, first-served basis. There are rinse showers, bulk water and portable toilets in convenience stations along the beach. Come take in the surf and the sun!

Port Isabel Lighthouse State Historic Site

421 East Queen Isabella Blvd., Port Isabel 78578 📞 (956) 943-2262

GPS Latitude N 26 4 40.79 | Longitude W 97 12 25.19



This coastal “light” was built in 1852 in response to requests from sea captains for help in navigating around the low-lying Texas coast. Technology changes, the coming of the railroad and the consequent drop in commercial shipping made lighthouses obsolete. At one time there were 16 lighthouses on the Texas coast. Now, only two of the historic structures are open to the public. A museum, a replica of the lighthouse keeper’s cottage and picnic tables on the grounds sit in the shadow of the

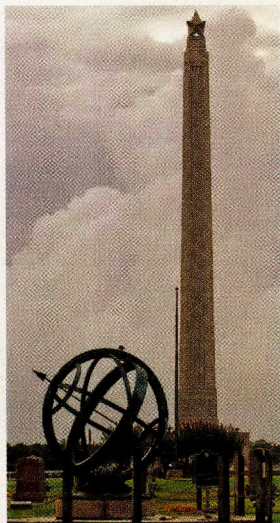
72-foot-high tower, which is operated by the City of Port Isabel.

San Jacinto Battleground-Monument

State Historic Site

3523 Independence Parkway South, La Porte 77571 📞 (281) 479-2431

GPS Latitude N 29 45 05.72 | Longitude W 95 05 23.64



The San Jacinto Battleground State Historic Site preserves the proud history of the state of Texas and the United States. The battle of San Jacinto, fought here on April 21, 1836, secured independence from Mexico. This site's National Historic Landmark status attests to the battle's importance to state, national and international history.

Visit the battleground, and follow a trail and boardwalk through a wetland where native prairie grasses, marshes and bottomland forests are being restored to their 1836 appearance to provide habitat for a variety of wildlife. Tour the 570-foot-tall San Jacinto Monument, one of the world's tallest.

Sea Rim State Park

P.O. Box 356, Sabine Pass 77655 📞 (409) 971-2559

GPS

Latitude N 29 40 31.36 | Longitude W 94 02 36.99

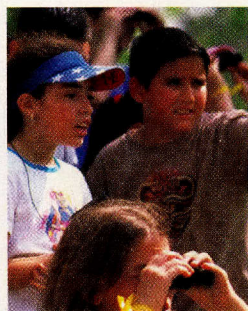


“Sea Rim” refers to the portion of shoreline where marsh grasses meet the surf, formed here by silt deposits from the Sabinal River delta. The park is being restored following hurricane damage and continues to offer numerous day-use recreation opportunities within its more than 4,000 acres of marshland and five miles of Gulf of Mexico beach shorelines. Activities include fishing, birdwatching, nature study, hiking, wildlife viewing and beach access. Primitive camping is also available.

Sheldon Lake State Park and Environmental Learning Center

15315 Beaumont Hwy., Houston 77049 ☎ (281) 456-2800

GPS Latitude N 29 51 28.04 | Longitude W 95 09 36.90



Only 15 miles from downtown Houston, this 3,200-acre “green and blue island” is surrounded by the highways, railroads and industry of the Bayou City. Sheldon lake provides excellent wildlife viewing, paddling and fishing. Open for day use, the Environmental Learning Center features a fish hatchery “gone wild” plus mile of wheelchair-accessible trails and LEED-certified facilities demonstrating “green architecture” and alternative energy at work. This outdoor classroom for all ages provides programming for schools, groups and individuals by reservation. Free catch-and-release fishing is permitted on weekends at two stocked ponds. Finally, don’t miss taking a bird’s eye view of Sheldon Lake and the restored prairie and wetlands from the John Jacob Observation Tower.

Fulton Mansion State Historic Site

P.O. Box 1859, Fulton 78358 ☎ (361) 729-0386

This park is under the operation of the Texas Historical Commission.

Lake Houston Park

22031 Baptist Encampment, New Caney 77357 ☎ (281) 354-6881

Operated by the City of Houston Parks and Recreation.

Sabine Pass Battleground State Park and Historic Site

P.O. Box 356, Sabine Pass 77655 ☎ (409) 971-2559

This park is under the operation of the Texas Historical Commission.

Varner-Hogg Plantation State Historic Site

1702 N. 13th Street, West Columbia 77486 ☎ (979) 345-4656

This park is under the operation of the Texas Historical Commission.

Walter Umphrey State Park

3897 MLK, Jr. Drive/Hwy. 82, Port Arthur 77640 ☎ (409) 985-4811

This park is managed by Jefferson County.

Free Fishing in State Parks!

Fish *without a license* at more than 50 state parks across Texas! Grab your rod and reel and get out to enjoy one of America's favorite pastimes!

Some state parks have a "Tackle Loaner Program." Many also offer free, fun, family-oriented fishing events. For a list of parks that provide loaner equipment and for upcoming Go Fish! Learn-to-Fish events, fishing derbies and "Fish with a Ranger" events, visit:

www.texasstateparks.org



Life's better outside.®

SOUTH TEXAS PLAINS REGION



Special thanks to Toyota, whose generous support made this guide possible.

Bentsen-Rio Grande Valley State Park

2800 S. Bentsen Palm Drive, Mission 78572 ☎ (956) 584-9156

GPS Latitude N 26 11 01.28 | Longitude W 98 22 49.80



**Operations
of access has
changed at
this park.**
texasstateparks.org/
access

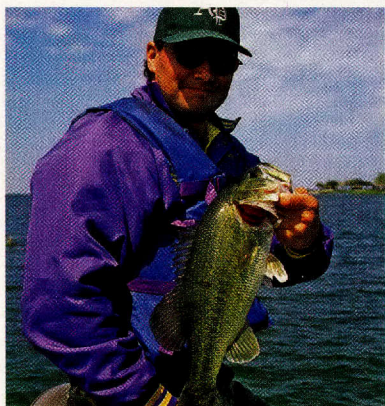


Serving as headquarters of a unique network of the nine World Birding Center sites in South Texas, Bentsen-Rio Grande Valley State Park features more than 325 species of birds and more than 200 species of butterflies on 760 acres of riparian woodland. Witness amazing hawk migrations, and enjoy bird walks and natural history tours at this key migratory stopover. The park features nature trails, a hawk tower, birding and

wildlife viewing blinds, seasonal bird feeding stations, primitive campsites, tram tours and numerous opportunities for bird and wildlife photography. Access into the park is on foot, by bike or tram. Visitors can pick up the latest field guides or browse through a wide selection of souvenirs and nature-inspired merchandise at the Algunas Plumas gift shop. Stop by the La Familia Nature Center to see the latest nature displays or chat with park naturalists or volunteers about what wildlife is being seen within the park.

Choke Canyon State Park

P.O. Box 2, Calliham 78007 📞 (361) 786-3868



This park complex includes two separate park units on the shores of the 26,000-surface-acre reservoir, offering access to a wide expanse of water. That, coupled with mild weather, invites boating, waterskiing and fishing year round. Fishing at Choke Canyon reservoir is regarded as some of the finest in Texas. Largemouth bass, white bass, crappie, blue catfish, channel catfish, flathead catfish, bluegill and redear sunfish and alligator gar have healthy populations here. An abundance of wildlife abounds to offer visitors the chance to see white-tailed deer, wild turkey, javelina and even alligators. The park's facilities also include a gymnasium, recreation hall, dining hall and group picnic pavilions.

Calliham Park Unit

GPS Latitude N 28 27 57.81 | Longitude W 98 21 14.58

In addition to campsites and group pavilions, the park has a basketball court, tennis court and baseball diamond. An auditorium with dining hall, dressing rooms and a stage are available for rent. The park has nature trails that provide great birding opportunities to view a diverse variety of species.

South Shore Park Unit (Day use only)

GPS Latitude N 28 28 2.31 | Longitude W 98 14 47.11

This day-use section has a two-lane and a six-lane boat ramp and a lighted fish cleaning table.

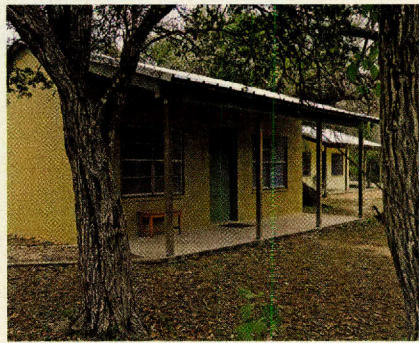
Estero Llano Grande State Park

3301 S. International Blvd. (F.M. 1015), Weslaco ☎ (956) 565-3919

GPS Latitude N 26 07 35.0796 | Longitude W 97 57 23.4648



! Operations or access has changed at this park.
texasstateparks.org/access

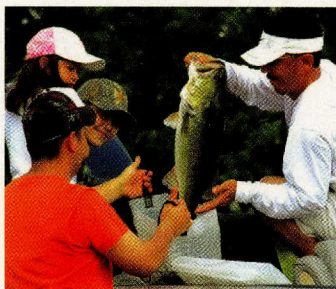


Water is the magic ingredient for attracting wildlife in South Texas, and Estero Llano Grande State Park offers something special as the largest wetlands environment in the World Birding Center network. At the geographic center of the Rio Grande Valley, this 200-acre refuge in Weslaco attracts a spectacular array of South Texas wildlife with its varied landscape of shallow lakes, woodlands and thorn forest. Explore the park's many trails, boardwalks, pavilions and observation decks. While you are there, visit the park store, Humadales Alegres, which features unique souvenirs as well as wetland, butterfly, bird and other wildlife merchandise. A group camp facility with bunkhouse is also available.

Falcon State Park

P.O. Box 2, Falcon Heights 78545 ☎ (956) 848-5327

GPS Latitude N 26 34 58.54 | Longitude W 99 08 33.43



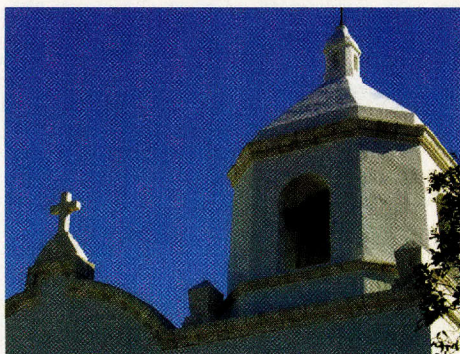
On the shores of Falcon Reservoir, wild olive, wild oregano, hibiscus, mesquite thickets, huisache and prickly pear cactus give refuge to roadrunners, javelina, deer and jackrabbits. While park visitors enjoy the scenic views and abundant wildlife, they can kick back at this peaceful retreat where park hosts organize a variety of activities. Join us during the winter months for great birdwatching. The world-class bass fishing draws anglers from across the U.S.

to the 98,960-surface-acre lake. Visitors can also enjoy a butterfly garden.

Goliad State Park

108 Park Road 6, Goliad 77963-3206 ☎ (361) 645-3405

GPS Latitude N 28 39 23.68 | Longitude W 97 23 13.66



More than 250 years ago, Spanish missionaries and soldiers established Mission Espíritu Santo at Goliad on the San Antonio River. Cattle thrived on these rich grasslands, the origin of the great Texas ranching industry. Today, you can camp under massive oaks along the river, explore the museum, and in the summer months swim in a Junior Olympic-sized pool. Mission

Espíritu Santo impresses with aging serenity, rising against a blue sky as an icon of the Spanish Colonial Era. General Ignacio Zaragoza (1829-1862), Mexican general and the hero of Cinco de Mayo, was born in Goliad when it was a sleepy village on Mexico's northern frontier. The 1836 Battle of Coleto Creek was fought nearby, marking a distressing loss during the Texas Revolution, and is remembered at the nearby Fannin Battleground State Historic Site. Goliad State Park also features a park store.



Resaca de la Palma State Park

1000 New Carmen Street, Brownsville 78521 📞 (956) 350-2920

GPS Latitude N 25 59 13.19 | Longitude W 97 33 50.39



Resaca de la Palma State Park boasts the largest tract of land within the World Birding Center network. It is located at the Rio Grande River Delta and features 1,200 acres of subtropical habitat containing wetlands, mature woodland and mesquite savannah, all of which provide one of the most well-preserved ecosystems in South Texas.

Whether strolling alongside the resaca or relaxing on the tram, experience the great outdoors only minutes away from the urban environment of Brownsville. Hike to one of four observation decks and witness a diverse array of tropical wildlife. This unique site provides the ideal setting for outdoor recreation such as an early-morning bird count, interpretive plant tours, geocaching or biking. A park store has also been added to accommodate camping and souvenir needs.

Casa Navarro State Historic Site

228 South Laredo St., San Antonio 78207 📞 (210) 226-4801

This park is under the operation of the Texas Historical Commission.



The World Birding Center

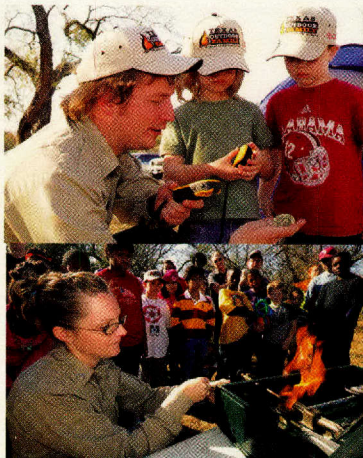


The World Birding Center is a network of nine individual birding parks and sites throughout the Lower Rio Grande Valley, where some 500 different bird

species can be observed. The network includes three State

Parks: Estero Llano Grande State Park in Weslaco, Resaca de la Palma State Park in Brownsville, and Bentsen-Rio-Grande-Valley State Park in Mission.

www.theworldbirdingcenter.com



**TEXAS
OUTDOOR
FAMILY**
TEXAS PARKS AND WILDLIFE



**Admit it. Camping looks like fun.
You'd like to try it, but you have questions.
We can help!**

The Texas Outdoor Family program is designed to teach you and your family the basic outdoor skills you need to enjoy a great overnight camping experience, no experience necessary!

Starting at
only \$65
per family,
CAMPING EQUIPMENT
PROVIDED!
(up to 6 family
members)

Workshops are hosted at state parks and partner sites for hands-on experience with basic outdoor skills such as camping, outdoor cooking, geocaching and (depending on the park) various activities such as kayaking, fishing or wildlife watching.

To learn more, call (512) 389-8903, or visit
texasstateparks.org/tof



leave no trace
DON'T LEAVE WHAT YOU DON'T BRING



Life's better outside.®

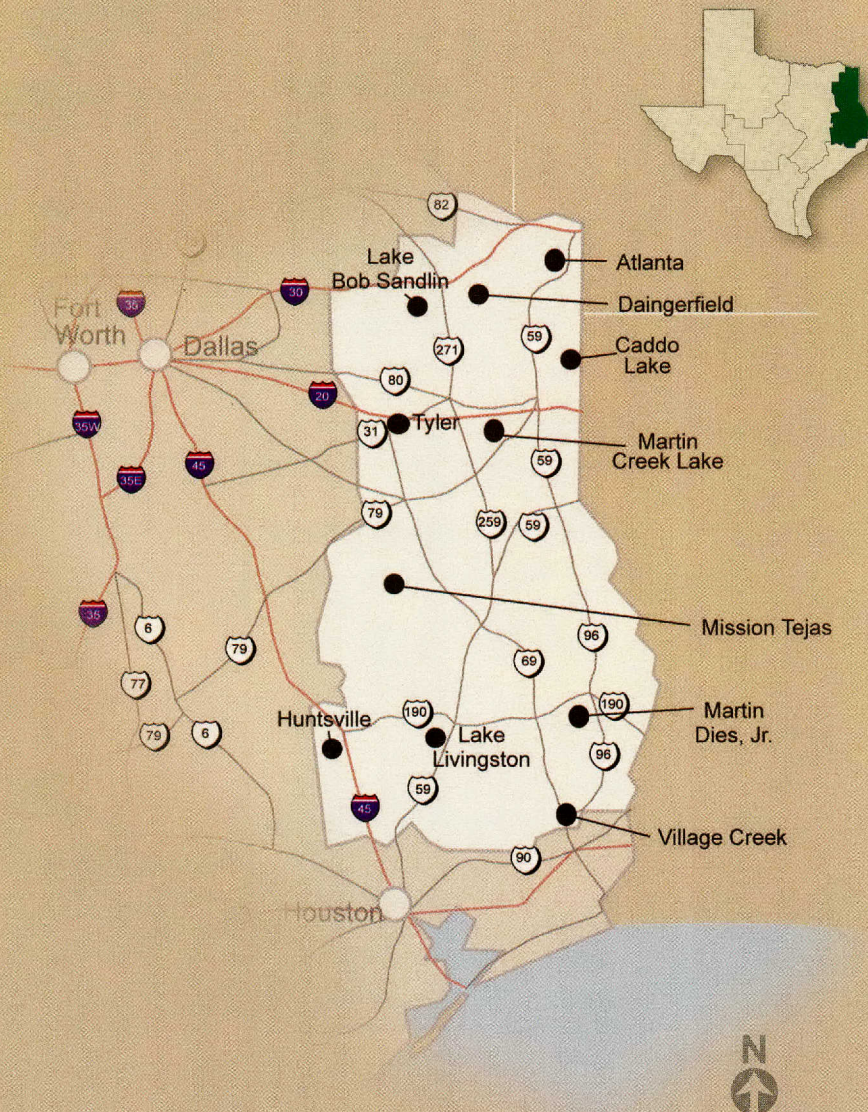
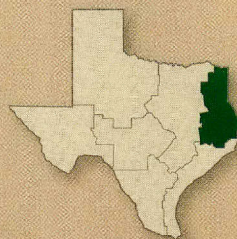


PROUD SPONSOR



www.krei.com

PINEYWOODS REGION



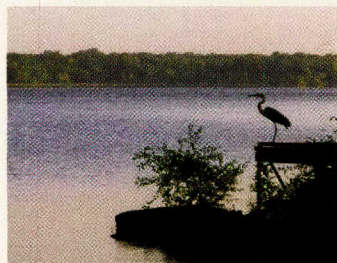
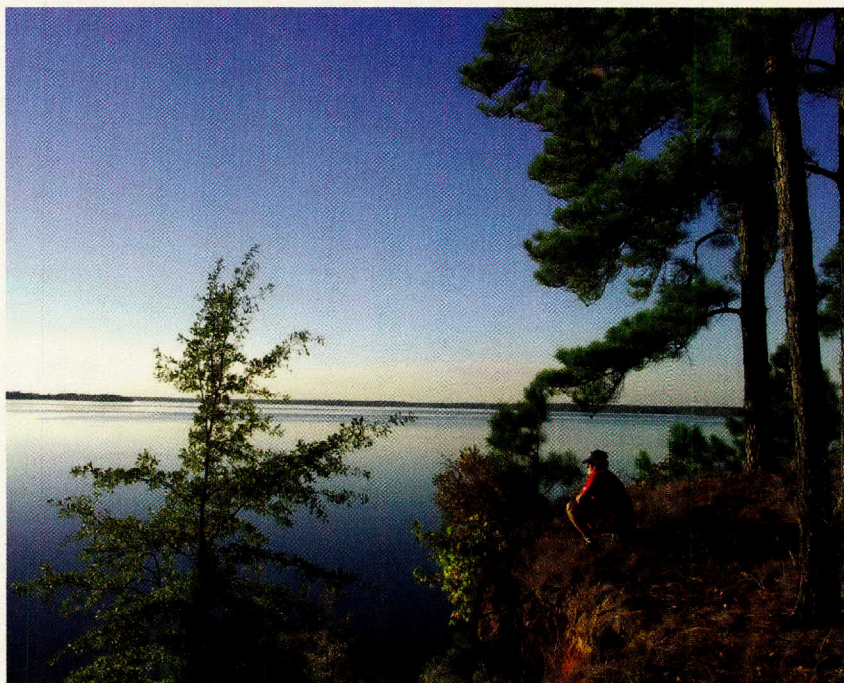
Special thanks to Toyota, whose generous support made this guide possible.

Atlanta State Park

927 Park Road 42, Atlanta 75551 📞 (903) 796-6476

GPS

Latitude N 33 13 50.66 | Longitude W 94 14 58.77



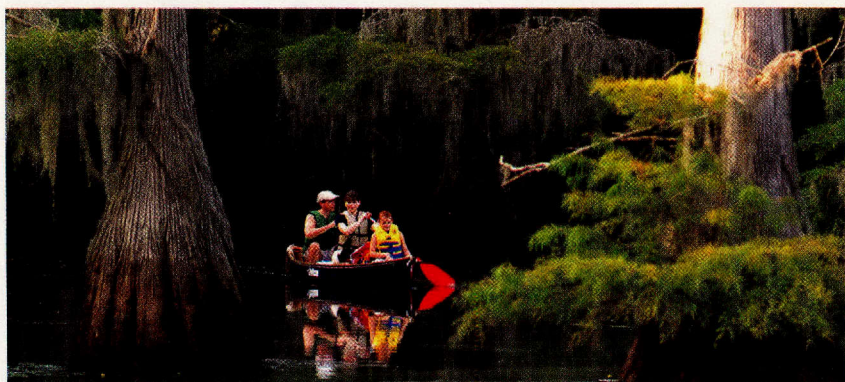
Located on Wright Patman Lake near Texarkana, this charming, wooded park has a west-facing shoreline that allows visitors to sit in the peaceful evening and watch brilliant red and deep blue sunsets over the water. The 20,300-surface-acre reservoir invites waterskiing, boating and fishing. Beautiful hiking and biking trails meander through the woodlands and offer great opportunities for wildlife and

bird viewing. The park's natural setting is a wooded habitat that is considered home to many different species of birds. Visitors can also enjoy great fishing. Catfish and crappie are a common catch. Come stay for a night or two and have a unique "Pineywoods" experience. We offer RV and tent camping, fishing, swimming, boating, interpretive programs and many other recreational opportunities.

Caddo Lake State Park

245 Park Road 2, Karnack 75661 📞 (903) 679-3351

GPS Latitude N 32 40 49.33 | Longitude W 94 10 34.75

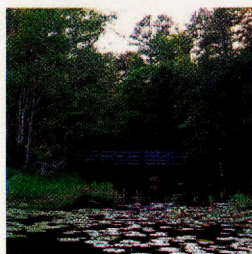


Caddo Lake, the only natural lake in Texas, was created by a mass of trees and flood debris known historically as the Great Raft of the Red River. It obstructed the river channel for more than 100 miles above Shreveport, Louisiana, until 1874, when it was successfully removed to clear the channel for navigation. But the lake slowly drained away, leaving a swamp. A modern dam maintains the lake, and today, canoeists, anglers and boaters can explore the picturesque maze of bayous — thick with ancient bald cypress trees. The park includes some lovely, fully-restored CCC pine-log cabins that make for an authentic “cabin in the woods” experience.

Daingerfield State Park

455 Park Road 17, Daingerfield 75638 📞 (903) 645-2921

GPS Latitude N 33 00 46.69 | Longitude W 94 41 26.62



Stay in recently renovated CCC cabins, or camp beneath towering loblolly pines and dense oaks that edge the clear and calm, 80-acre lake in this picturesque park. Whether it's a sandwich and beverage aboard a rented paddleboat or a picnic spread in the grass on a sunny day, food simply tastes better in this scenic and relaxing setting. The park's facilities, restrooms and lodge have all been recently renovated. A park store has also been added to accommodate camping and souvenir needs.

Huntsville State Park

P.O. Box 508, Huntsville 77342-0508 📞 (936) 295-5644

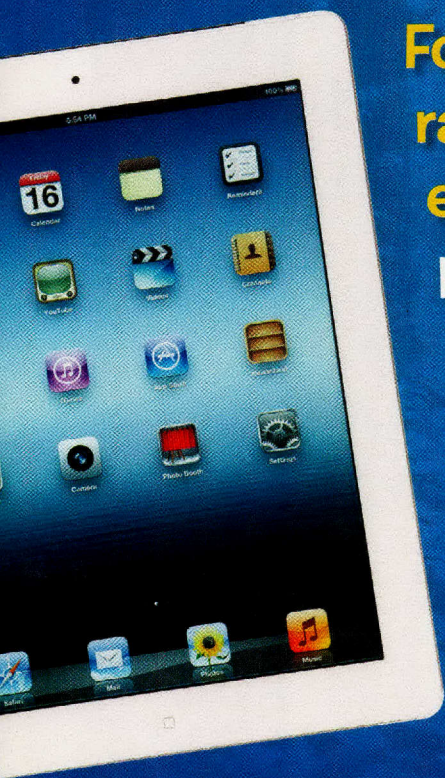
GPS Latitude N 30 37 42.20 | Longitude W 95 31 33.09



The Civilian Conservation Corps, which helped build state and national parks all over the U.S, accepted all citizens, a remarkable decision for the times. As a result, African American companies were formed to help develop parks and public lands, including Huntsville State Park. The park quickly became a favorite of tourists and outdoor enthusiasts. Located among loblolly and shortleaf pines, the park boasts an extensive trail system, and equestrian stables are conveniently located onsite. The park also has a 210-acre lake, Lake Raven, with canoes for rent, and plentiful wildlife and birds, as well as great fishing. A CCC-built group facility is available for rent for weddings, parties and reunions.

HELP TEXAS

Rate a Texas park at
ParkVisitor.com
by August 31, 2012.



For **EACH** park you
rate, **YOU** will be
entered to win the
new **Apple®**
iPad™ 3 and
Texas State Parks
will receive a
\$1 donation*
from **ParkVisitor.**

Scan to rate a park!



STATE PARKS!



ParkVisitor.com

Insider Scores For Getting Outdoors™



The screenshot shows the Park Visitor website interface for Bastrop State Park. At the top, there's a navigation bar with links for 'What To Do', 'Where To Go', 'Insider Tips', 'Rate A Park', 'Blog', 'PV TV', and 'Programs'. Below the navigation is a large photo of a forest with 'back' and 'next' navigation arrows. The main content area features a 'SCORE 90' badge, a 'Rate This Park' button, and a 'Visit Official Site' button. The address '3006 Hwy. 27 East Bastrop, TX 78602' is displayed. A description of the park follows, mentioning its location southeast of Austin and its history. Below the description are social media icons for Facebook, Twitter, and YouTube. A banner for a kayak contest is visible, along with a GEICO advertisement. The 'Community' section includes a Google Maps location, a Facebook post from Heather Stark Judkins, and a Foursquare post from Callyn L. The page also shows a 'This park features' section with 10 activities and 0 comments.

* Up to \$500

A PRODUCT OF

Good Solutions
GROUP

Martin Creek Lake State Park

9515 County Road 2181D, Tatum 75691 📞 (903) 836-4336

GPS Latitude N 32 16 40.80 | Longitude W 94 33 57.56



A small island in the lake, reached via a foot-bridge, has primitive campsites for backpackers wanting a quiet retreat. There are limited campsites available on the island, so be sure to make a reservation. Because the lake water cools a power plant, the water stays warm, making this an excellent channel cat and bass fishery, even during cold-weather

months. Bluegill and redear sunfish are also present in high numbers. The park also has a lighted fishing pier and boat ramps. Stay overnight in this unique Pineywoods park in cabins, cottages or enclosed shelters as well. Enjoy tent camping, or park your RV for a spell and make yourself at home.

Martin Dies, Jr. State Park

634 Park Road 48 South, Jasper 75951 📞 (409) 384-5231

GPS Latitude N 30 50 47.47 | Longitude W 94 09 56.48



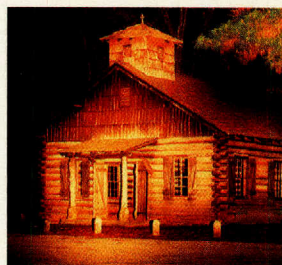
Pitch your tent or park your RV on the shores of this reservoir under lofty pine, oak and beech trees in the northern corner of the Big Thicket. The mix of habitats at this biological crossroads brings in arid country critters such as roadrunners, as well as swamp dwellers, like alligators. Boat ramps and rentals help get you to Lake B.A. Steinhagen, and a lighted fishing pier lets you fish from along the shore.

Channel, blue and flathead catfish can all be caught here and spotted bass can be caught in the nearby Angelina River. Crappie fishing reigns in the spring. There's a four-mile, beginner-level mountain biking trail, and for paddling enthusiasts, four marked paddling trails on the lake and river offer beginner and intermediate visitors access to the water. Both bicycles and canoes can be rented at the park. The park's environmental education center is worth a visit, and the group hall hosts many family gatherings every year.

Mission Tejas State Park

120 State Park Road 44, Grapeland 75844 📞 (936) 687-2394

GPS Latitude N 31 32 33.28 | Longitude W 95 13 55.56



The park commemorates the first Spanish mission in East Texas. Fearing the French would claim New World dominion over lands that Spain wished to control, Spanish leaders in Mexico mounted an expedition to settle the Pineywoods in 1690. It was this pioneering effort at mission-building that resulted in the first contact with the Caddoan-speaking Hasinai people. Chancing upon an East Texas farming village, the Spanish explorers were greeted in the Caddoan language with a word that sounded like “tayshas.” It meant “friends” or “allies,” but it was recorded as a place name, becoming the Spanish word Tejas and the English word Texas. This 659-acre park provides a relaxing retreat in the Neches River uplands for campers, anglers, picnickers and hikers. El Camino Real Historic Trail traverses through the park, enabling visitors to walk in Davey Crockett’s footsteps.

Tyler State Park

789 Park Road 16, Tyler 75706-9141 📞 (903) 597-5338

GPS Latitude N 32 28 55.81 | Longitude W 95 16 59.91



Camping, swimming, fishing, boating, hiking and biking – there are many ways to enjoy this quiet retreat that surrounds a clear spring-fed lake located in the relaxing beauty of East Texas, near the city of Tyler. Timeless craftsmanship in the stonework and wooden buildings built by the Civilian Conservation Corps (CCC) make the park a historic treasure.

Hike and bike on approximately 14 miles of popular trails or rent a boat for a leisurely tour of the lake. While doing so, you might see deer, raccoon, squirrels, bobcats, coyote, opossum or many flowering plants, such as dogwood, redbud, standing cypress, coreopsis or purple coneflower. The clear water of the 64-acre lake is excellent for year-round fishing, swimming and scuba diving. Full RV hookups, tent sites, screened shelters and group facilities are available, and recently renovated limited-service cabins.

Village Creek State Park

Physical address: 8854 Park Road 74 (off Alma Drive), Lumberton 77657

Mailing address: P.O. Box 8565, Lumberton 77657

☎ (409) 755-7322

GPS

Latitude N 30 15 03.34 | Longitude W 94 10 40.15
(FRONT GATES: Latitude N 30 14 47.5 | Longitude W 094 10 52)



A beautiful overnight facility perfectly suited for families is available for rent at this park. Village Creek State Park reveals a primeval world of backwater sloughs and swamps, carnivorous plants, various mammals and water snakes, colorful birds and hundreds of species of flowering plants. They all thrive in this region known as the Big Thicket, a pine-and-hardwood forest so dense that the early pioneers barely attempted to settle it. This ecological splendor once comprised more than 3 million acres of dense forest and bottomland. A small portion is set aside as a park with eight miles of marked trails, interpretive programs, camping facilities and access to paddling on wide, slow-moving Village Creek.

Caddoan Mounds State Historic Site

1649 State Highway 21 West, Alto 75925 ☎ (936) 858-3218

This park is under the operation of the Texas Historical Commission.

Governor Hogg Shrine Historic Site

100 Governor Hogg Pkwy., Quitman 75783 ☎ (903) 763-4411

Operated by the City of Quitman.

Starr Family Home State Historic Site

407 West Travis Street, Marshall 75670 ☎ (903) 935-3044

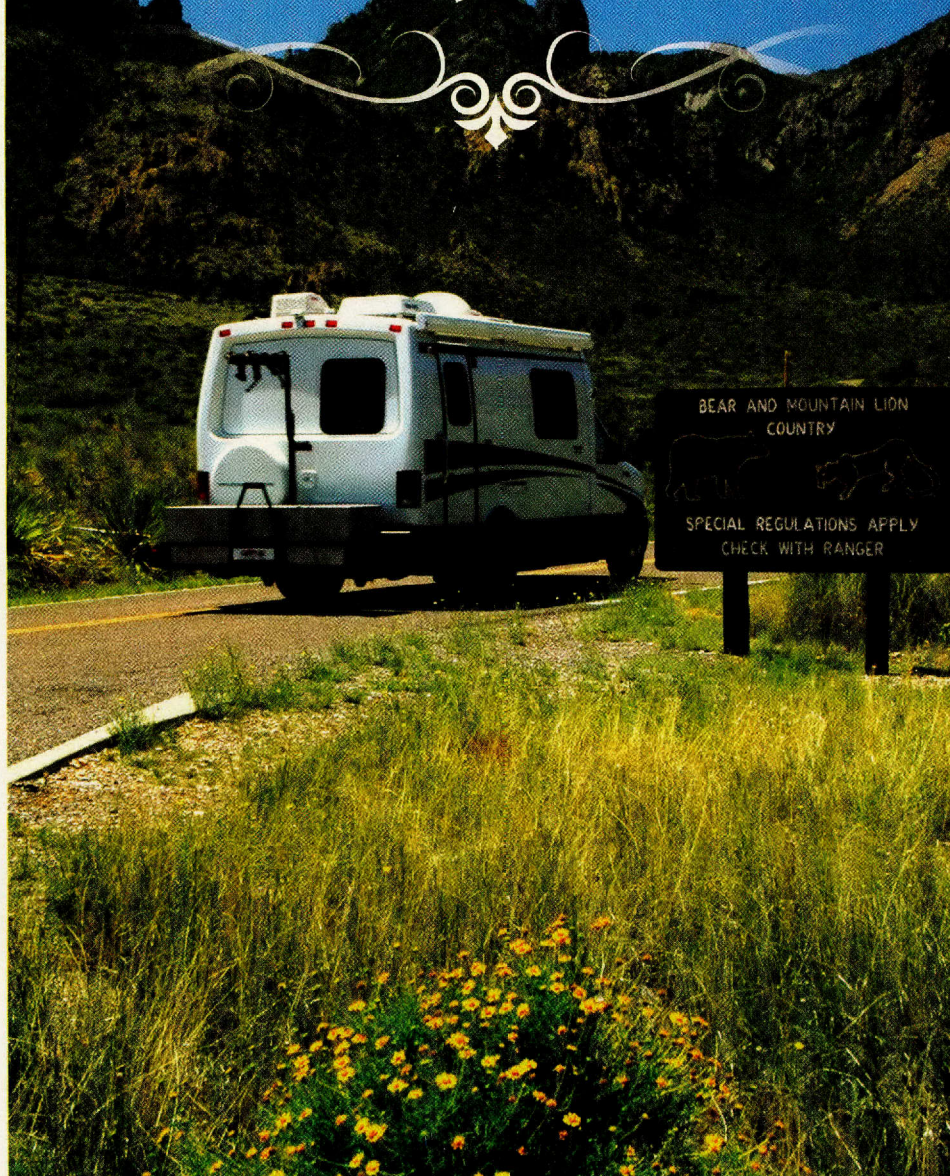
This park is under the operation of the Texas Historical Commission.



facebook.com/texasparksandwildlife

SAVING PEOPLE MONEY

on more than just car insurance.



Some discounts, coverages, payment plans and features are not available in all states or all GEICO companies. GEICO is a registered service mark



**How could your hobby save you even more money
with GEICO?**

At GEICO, we don't just help cover motorcycles, ATVs, personal watercraft, boats and RVs. We're enthusiastic about them – just like you. After all, when you're out having fun, insurance should be the last thing on your mind. And don't forget, we'll also cover that car or truck you use to haul your toys around.

You could save even more with a Multi-Policy Discount when you insure more than one vehicle with GEICO.

Go to **geico.com** or contact your local GEICO agent for a fast, free rate quote. Check out your coverage options, GEICO's great rates, and see how much you could save.



GEICO[®]
1-877-434-2678

GEICO is proud to support Texas state parks.

FACILITIES & ACTIVITIES INDEX

| PARKS | Some Accessible Facilities | Day Use Only | Historic Site/Museum | Exhibit/Interpretive Center | Restrooms | Showers | Trailer Dump Station | Equestrian Facilities | Screened Shelter | Cabins | Overnight Group Facility | Day Use Group Facility | Primitive/Benchpacking | Walk-In Tent | Tent | Water, Electric and Sewer | Water and Electric | Hiking | Nature/Interpretive | Bicycle | Equestrian | Picnicking | Swimming Pool | Boat Ramp | Fishing | Swimming | Canoes/Kayak Rentals | Motel/Lodge/Bunkhouse | LATITUDE (degrees, minutes, seconds) N | LONGITUDE (degrees, minutes, seconds) W | Directory Page Number | Index |
|--------------------------------|----------------------------|--------------|----------------------|-----------------------------|-----------|---------|----------------------|-----------------------|------------------|--------|--------------------------|------------------------|------------------------|--------------|------|---------------------------|--------------------|--------|---------------------|---------|------------|------------|---------------|-----------|---------|----------|----------------------|-----------------------|-------------------------------------------|--------------------------------------------|-----------------------|-----------|
| | | | | | | | | | | | | | | | | | | | | | | | | | | | | | | | FACILITIES | CAMPSITES |
| ABILENE SP | ♿ | | | | • | • | | • | • | • | • | • | | | | | | | | | | | | | | | | 32 14 26.34 | 99 52 44.65 | 23 | | |
| ATLANTA SP | | | | | • | • | | • | • | • | | | | | | | | | | | | | | | | | | 33 13 50.66 | 94 14 58.77 | 99 | | |
| BALMORHEA SP | ♿ | | | | • | • | | | | | H | • | | | | | | | | | | | | | | | | 30 56 42.21 | 103 47 11.79 | 45 | | |
| BARTON WARNOCK | ♿ | • | | | • | • | | • | • | • | | | | | | | | | | | | | | | | | | 29 16 11.85 | 103 45 14.83 | 46 | | |
| BASTROP SP | ♿ | | | | | | | • | • | • | | • | • | • | | | | | | | L | | | | | | | 30 06 36.61 | 97 17 12.98 | 61 | | |
| BATTLESHIP TEXAS SHS | ♿ | • | • | | | | | | | | | | | | | | | | | | | | | | | | | 29 45 05.72 | 95 05 23.64 | 81 | | |
| BENTSEN-RIO GRANDE VALLEY SP | ♿ | | | | • | • | | | | | | • | • | • | | | | | | | | | | | | | | 26 11 01.28 | 98 22 49.80 | 91 | | |
| BIG BEND RANCH SP | ♿ | | | | • | • | | • | | | | • | • | • | | | | | | | K | | | | | | | 29 28 12.18 | 103 57 29.08 | 46 | | |
| BIG SPRING SP | | | | | | | | | | | | • | | | | | | | | | | | | | | | | 32 13 55.99 | 101 29 26.48 | 23 | | |
| BLANCO SP | | | | | • | • | | • | | | | | | | | | | | | | | | | | | | | 30 05 34.11 | 98 25 25.57 | 31 | | |
| BONHAM SP | | | | | • | • | | • | | | | | | | | | | | | | | | | | | | | 33 32 48.15 | 96 08 40.27 | 62 | | |
| BRAZOS BEND SP | ♿ | | | | • | • | | • | | | | | | | | | | | | | K,L | | | | | | | 29 22 15.16 | 95 37 54.58 | 82 | | |
| BUESCHER SP | ♿ | | | | • | • | | • | | A | | | | | | | | | | | L | | | | | | | 30 02 20.90 | 97 09 29.66 | 62 | | |
| CADDO LAKE SP | ♿ | | | | • | • | | • | | | | | | | | | | | | | | | | | | | | 32 40 49.33 | 94 10 34.75 | 100 | | |
| CAPROCK CANYONS SP AND TW | | | | | • | • | | • | | | | | | | | | | | | | | | | | | | | 34 24 48.31 | 101 03 32.54 | 24 | | |
| CEDAR HILL SP | | | | | • | • | | • | | | | | | | | | | | | | | | | | | | | 32 37 18.19 | 96 58 44.86 | 63 | | |
| CHOKE CANYON SP - Calliham | ♿ | | | | • | • | | • | | A | | | • | • | • | | | | | | | | | | | | | 28 27 57.81 | 98 21 14.58 | 92 | | |
| CHOKE CANYON SP - South Shore | ♿ | • | | | • | • | | • | | | | | | | | | | | | | | | | | | | | 26 28 2.31 | 98 14 47.11 | 92 | | |
| CLEBURNE SP | ♿ | | | | • | • | | • | | | | | | | | | | | | | | | | | | | | 32 15 8.46 | 97 32 58.63 | 63 | | |
| COLORADO BEND SP | | | | | • | • | | | | | | | • | • | • | | | | | | | | | | | | | 31 01 22.40 | 98 26 32.67 | 31 | | |
| COOPER LAKE SP - Doctors Creek | ♿ | | | | • | • | | • | | A | | | | | | | | | | | | | | | | | | 33 20 57.08 | 95 39 52.02 | 64 | | |
| COOPER LAKE SP - South Sulphur | ♿ | | | | • | • | | • | | A | | | | | | | | | | | | | | | | | | 33 17.268 | 95 39 469 | 64 | | |
| COPPER BREAKS SP | | | | | • | • | | • | | | | | • | • | • | | | | | | | | | | | | | 34 06 44.06 | 99 44 34.94 | 25 | | |
| DAINGERFIELD SP | | | | | • | • | | • | | | | | | | | | | | | | | | | | | | | 33 00 46.69 | 94 41 26.62 | 100 | | |
| DAVIS MOUNTAINS SP | ♿ | | | | • | • | | • | | | | | | | | | | | | | | | | | | | | 30 35 56.83 | 103 55 46.09 | 47 | | |
| DEVILS RIVER SNA | | | | | • | • | | • | | | | | | | | | | | | | | | | | | | | 29 56 22.84 | 100 58 13.18 | 48 | | |
| DEVIL'S SINKHOLE SNA | | | | | • | • | | | | | | | | | | | | | | | | | | | | | | 30 03 33.19 | 100 06 35.17 | 32 | | |
| DINOSAUR VALLEY SP | ♿ | | | | • | • | | • | | | | | • | • | • | | | | | | | | | | | | | 32 14 46.50 | 97 48 48.13 | 64 | | |
| EISENHOWER SP | ♿ | | | | • | • | | • | | | | | | | | | | | | | | | | | | | | 33 48 37.11 | 96 35 59.92 | 65 | | |
| ENCHANTED ROCK SNA | | | | | • | • | | • | | | | | • | • | • | | | | | | | | | | | | | 30 29 45.45 | 98 49 11.53 | 33 | | |
| ESTERO LLANO GRANDE SP | ♿ | • | | | • | • | | | | | | | | | | | | | | | | | | | | | | 26 07 35.0796 | 97 57 23.4648 | 93 | | |

2012 TOYOTA 4RUNNER

GOES WHERE LESSER VEHICLES CAN'T AND LESSER PEOPLE WON'T.

The 2012 4Runner is engineered with a 270 hp, 4-liter V6,
because when you want to get out and explore, you want
an SUV that won't hold you back.



OFFICIAL VEHICLE OF
THE TEXAS PARKS AND
WILDLIFE FOUNDATION



OFFICIAL VEHICLE OF
THE TOYOTA TEXAS
BASS CLASSIC



TOYOTA
moving forward





2012 TOYOTA TACOMA

ENJOYS BEING DRIVEN TO EXTREMES.

With its legendary durability and unsurpassed reliability,
the 2012 Tacoma will take whatever you throw at it
and doesn't mind getting a little dirty along the way.



OFFICIAL VEHICLE OF
THE TEXAS PARKS AND
WILDLIFE FOUNDATION



OFFICIAL VEHICLE OF
THE TOYOTA TEXAS
BASS CLASSIC

