

FEES AND FACILITIES

Bastrop State Park

P.O. Box 518 • Bastrop, Texas 78602 • (512) 321-2101 • www.tpwd.state.tx.us/bastrop/

Inquire about a Texas State Parks Pass – \$70 or \$95

ENTRANCE

Daily/Nightly Per Person Entrance Fees

Adult (13 and older)	\$4/day
Adult Group Facility	\$2/day
Adult Partial for Scenic Drive	\$2/day
Child (12 and under)	Free
Senior (date of birth <u>after</u> 9/1/30*)	
Texas Resident Only	\$2/day
Senior (date of birth <u>before</u> 9/1/30*)	Free

*Inquire about the Texas Parklands Passport

CAMPSITES

Check-out is 2 p.m.

Primitive	Closed until further notice
Water Only (tent sites)	\$12/night
Water and Electric	\$17/night
Water, Electric and Sewer	\$20/night
Overflow (No water, electric or sewer)	\$10/night

Ask about weekly and monthly rates.

REFECTORY

Group Dining Hall (10 a.m. - 9 p.m.)

Sunday - Saturday	\$300/night
-------------------	-------------

GROUP BARRACKS

Four dorms with bunk beds and group kitchen with dining hall. Linens not provided. Check-in guaranteed by 5 p.m., check-out is 11 a.m.

Sunday - Saturday	\$350/night
-------------------	-------------

GROUP YOUTH AREA

Closed until further notice due to park renovations.

SWIMMING POOL

Currently operated by Bastrop YMCA. For information about memberships, swim lessons, hours of operation and fees, check out their website at www.BastropYMCA.org or call Bastrop YMCA at (512) 321-9622 or the pool at (512) 321-3740.

CANOE RENTALS

Life vests and paddles provided.

Deposit by credit card only	\$10/canoe
Rental per hour	\$5/canoe
Rental per day	\$15/canoe

CABINS

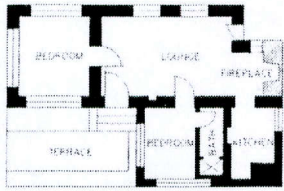
Cabin #1 (5 person, 2 double beds, 1 single bed)	\$110/night
Cabin #2 (2 person, 1 double bed)	\$80/night
Cabin #3 (6 person, 3 double beds)	\$120/night
Cabin #4 (4 person, 1 double bed, 2 single beds)	\$100/night
Cabin #5 (5 person, 2 double beds, 1 single bed)	\$110/night
Cabin #6 (5 person, 2 double beds, 1 single bed)	\$110/night
Cabin #7 (5 person, 2 double beds, 1 single bed)	\$110/night
Cabin #8 (5 person, 2 double beds, 1 single bed)	\$110/night
Cabin #9 (6 person, 3 double beds)	\$120/night
Cabin #10 (4 person, 2 double beds)	\$100/night
Cabin #11 (3 person, 1 double bed, 1 single bed)	\$90/night
Cabin #12 (8 person, 2 double beds, 4 single beds)	\$200/night
Cabin #14 (4 person, 1 double bed, 2 single beds)	\$110/night

NOTE: All cabins are completely furnished, including bed and bath linens. Kitchen equipped with range top, microwave and refrigerator, but does not include cooking and eating utensils. Heating and A/C, as well as a fireplace. Check-in time is guaranteed by 5 p.m. and check-out time is 11 a.m. No pets allowed in the cabins. See Texas State Park Rules and Regulations for complete details on pets. All cabins are subject to a 13% hotel tax and per person entrance fee.

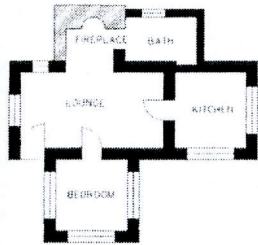
Two vehicles are allowed per campsite or cabin. Trailers are considered a vehicle. \$5 per night fee charged for excess vehicle.

For reservations, call: (512) 389-8900
Monday through Friday, 9 a.m. - 6 p.m.
or visit: www.texasstateparks.org

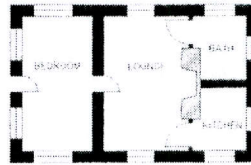
BASTROP STATE PARK CABINS



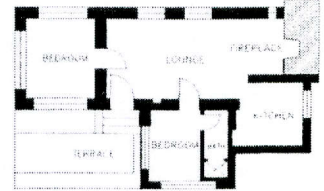
CABIN #1
"Sam Houston"
 (5 PERSONS)



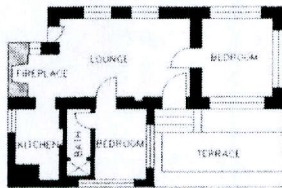
CABIN #2
 (2 PERSONS)



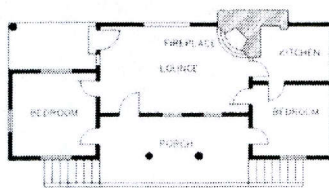
CABIN #3
"William B. Travis"
 (6 PERSONS)



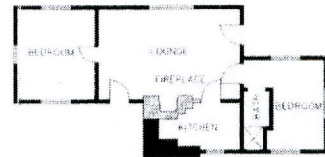
CABIN #4
 (4 PERSONS)



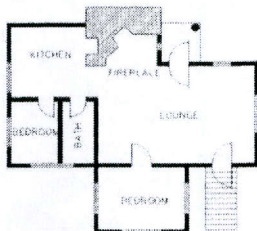
CABIN #5
 (5 PERSONS)



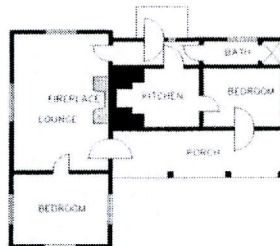
CABIN #6
 (5 PERSONS)



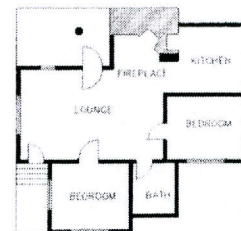
CABIN #7
 (5 PERSONS)



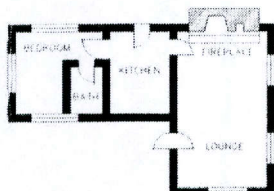
CABIN #8
 (5 PERSONS)



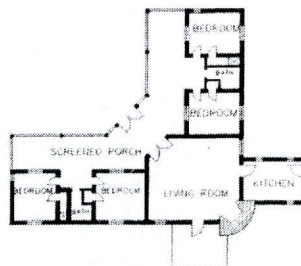
CABIN #9
 (6 PERSONS)



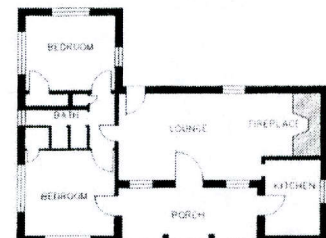
CABIN #10
 (4 PERSONS)



CABIN #11
 (3 PERSONS)



CABIN #12
"Lost Pines Lodge"
 (8 PERSONS)



CABIN #14
 (4 PERSONS - HANDICAP ACCESSIBLE)

Drawings of cabin floorplans by Lee Gallegos.



4200 Smith School Road
 Austin, TX 78744

©2013 TPWD PWD LF P4505-043S (5/13)

Life's better outside.®

In accordance with Texas State Depository Law, this publication is available at the Texas State Publications Clearinghouse, and/or Texas Depository Libraries.

TPWD receives federal assistance from the U.S. Fish and Wildlife Service and other federal agencies. TPWD is therefore subject to Title VI of the Civil Rights Act of 1964, Section 504 of the Rehabilitation Act of 1973, Title II of the Americans with Disabilities Act of 1990, the Age Discrimination Act of 1975, Title IX of the Education Amendments of 1972, in addition to state anti-discrimination laws. TPWD will comply with state and federal laws prohibiting discrimination based on race, color, national origin, age, sex or disability. If you believe that you have been discriminated against in any TPWD program, activity or event, you may contact the U.S. Fish and Wildlife Service, Division of Federal Assistance, 4401 N. Fairfax Drive, Mail Stop: MBSP-4020, Arlington, VA 22203, Attention: Civil Rights Coordinator for Public Access.