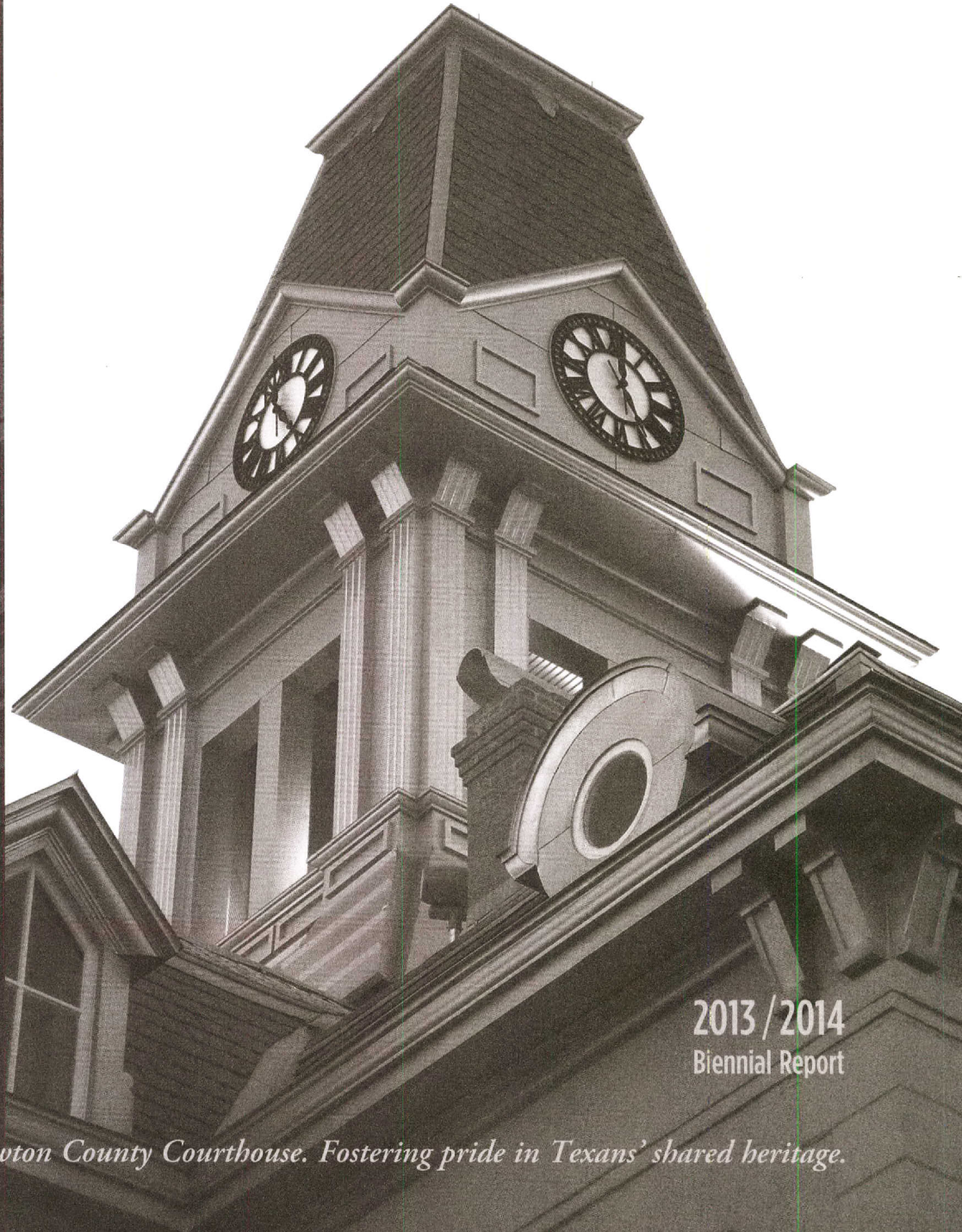


real places telling real stories



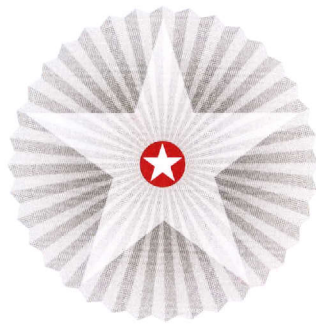
TEXAS HISTORICAL COMMISSION

real places telling real stories.



2013 / 2014
Biennial Report

The restored Newton County Courthouse. Fostering pride in Texans' shared heritage.



LETTER FROM THE EXECUTIVE DIRECTOR

Dear Friends,

Texans are fortunate to have an enduring cultural legacy and diverse history like no other state. We're excited about preserving this history! It's our job, but it's also our passion as proud Texans.

We're hoping our excitement at the Texas Historical Commission (THC) will be contagious. This report showcases the agency's vital activities during the past biennium, and demonstrates that we truly embrace our responsibility of preserving Texas' rich heritage. During the past two years, we feel our efforts to educate Texans about preserving history while strengthening Texas' economy in the process have been more successful than ever.

But there's still a lot to accomplish, with more challenges and opportunities ahead. Texas' population is increasing by nearly 1,000 people daily, so it's more important than ever to support and preserve our state's rich heritage and values for new Texans to appreciate. We should continue investing in the buildings, structures, and cultural landscapes that have defined Texas' special sense of place for centuries.

The benefits of our work go far beyond culture—previous research indicates the total economic impact of historic preservation in Texas is more than \$1.7 billion annually, supporting more than 40,000 jobs, \$890 million in income, \$1.4 billion in gross state product, and \$445 million in state and local taxes every year.

Texas continues to be a major travel destination, whether it's Dallas day-trippers or European tourists. Based on statistics from the Office of the Governor, total direct travel spending in 2013 was approximately \$67.5 billion. We know that a significant amount of that total—about \$6.75 billion—was spent on heritage travel.

At the THC, we're looking forward to the coming biennium and the opportunities it brings for us to protect and preserve the Lone Star State's unique heritage for the benefit of future generations.

Sincerely,

Mark Wolfe, executive director
Texas Historical Commission

CONTENTS

3 INTRODUCTION

5 DIVISION ACCOMPLISHMENTS

5 Community Heritage Development

10 Architecture

14 History Programs

20 Historic Sites

25 Archeology

29 Public Information and Education

30 Friends

32 Conclusion

33 APPENDICES

Commission Members

Organizational Chart

Historical Designations

Grants Awarded

Financial Report



JUNETEENTH

COMMEMORATED ANNUALLY ON JUNE 19TH, JUNETEENTH IS THE OLDEST KNOWN CELEBRATION OF THE END OF SLAVERY IN THE U.S. THE EMANCIPATION PROCLAMATION, ISSUED BY PRESIDENT ABRAHAM LINCOLN ON SEP. 22, 1862, ANNOUNCED, "THAT ON THE 1ST DAY OF JANUARY, A.D. 1863, ALL PERSONS HELD AS SLAVES WITHIN ANY STATE...IN REBELLION AGAINST THE U.S. SHALL BE THEN, THENCEFORWARD AND FOREVER FREE." HOWEVER, IT WOULD TAKE THE CIVIL WAR AND PASSAGE OF THE 13TH AMENDMENT TO THE CONSTITUTION TO END THE BRUTAL INSTITUTION OF AFRICAN AMERICAN SLAVERY.

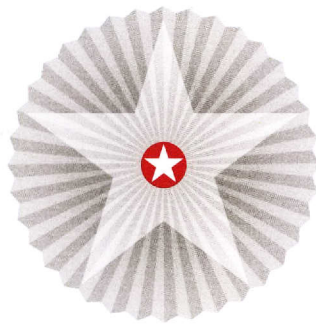
AFTER THE CIVIL WAR ENDED IN APRIL 1865 MOST SLAVES IN TEXAS WERE STILL UNAWARE OF THEIR FREEDOM. THIS BEGAN TO CHANGE WHEN UNION TROOPS ARRIVED IN GALVESTON. MAJ. GEN. GORDON GRANGER, COMMANDING OFFICER, DISTRICT OF TEXAS, FROM HIS HEADQUARTERS IN THE OSTERMAN BUILDING (STRAND AND 22ND ST.), READ "GENERAL ORDER NO. 3" ON JUNE 19, 1865. THE ORDER STATED "THE PEOPLE OF TEXAS ARE INFORMED THAT, IN ACCORDANCE WITH A PROCLAMATION FROM THE EXECUTIVE OF THE UNITED STATES, ALL SLAVES ARE FREE. THIS INVOLVES AN ABSOLUTE EQUALITY OF PERSONAL RIGHTS AND RIGHTS OF PROPERTY BETWEEN FORMER MASTERS AND SLAVES." WITH THIS NOTICE, RECONSTRUCTION ERA TEXAS BEGAN.

FREED AFRICAN AMERICANS OBSERVED "EMANCIPATION DAY," AS IT WAS FIRST KNOWN, AS EARLY AS 1866 IN GALVESTON. AS COMMUNITY GATHERINGS GREW ACROSS TEXAS, CELEBRATIONS INCLUDED PARADES, PRAYER, SINGING, AND READINGS OF THE PROCLAMATION. IN THE MID-20TH CENTURY, COMMUNITY CELEBRATIONS GAVE WAY TO MORE PRIVATE COMMEMORATIONS. A RE-EMERGENCE OF PUBLIC OBSERVANCE HELPED JUNETEENTH BECOME A STATE HOLIDAY IN 1979. INITIALLY OBSERVED IN TEXAS, THIS LANDMARK EVENT'S LEGACY IS EVIDENT TODAY BY WORLDWIDE COMMEMORATIONS THAT CELEBRATE FREEDOM AND THE TRIUMPH OF THE HUMAN SPIRIT.

(2014)

MARKER IS PROPERTY OF THE STATE OF TEXAS

2014 Juneteenth marker dedication, Galveston



INTRODUCTION



Texans have immense pride in their heritage. No other state can claim our larger-than-life history and epic cultural landscapes. Each year, the Texas Historical Commission (THC) works with hundreds of thousands of people who love Texas history.

During the past biennium, agency staff devoted their expertise to preserving Texas' enviable history and promoting economic development. They've accomplished this in many ways, but some of our most significant efforts include:

Our **Texas Historic Courthouse Preservation Program**, which has invested \$251 million in our landmark courthouses. Significantly, each courthouse restoration project has employed a Texas-based general contractor. Construction and other activity related to the program has created more than 9,600 jobs and generated more than \$269 million in local income.

The THC's **20 State Historic Sites** welcomed more than a quarter of a million people, representing a 40 percent increase since 2009. The sites attract travelers from outside the region, who spend money and create jobs for Texans in rural communities across the state.

The **Texas Main Street Program** assisted with more than 1,400 rehabilitation projects in Texas communities at a cost of more than \$67 million. The program has helped generate \$2.9 billion in reinvestment in Texas downtowns and urban neighborhood commercial districts and created more than 31,600 jobs since its inception in 1981.

In our efforts to educate Texans about historic resources while boosting the state's economy, we reintroduced the **Texas Treasure Business Award** for Texas companies providing services and employment for at least 50 years. The agency also helped preserve Texas' heritage via the newly implemented **Texas Historic Roads and Highways Program**, which brings valuable tourism dollars to our communities.

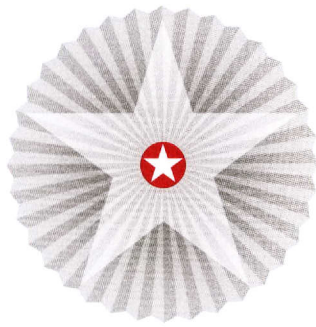
Looking to the future, the THC is excited about implementing new programs that will continue to bolster our economic development efforts across Texas. These include a series of new visitors centers at our historic sites; the reintroduction of the **Texas Preservation Trust Fund's** matching grants for preservation projects; and the **Texas Historic Preservation Tax Credit Program**, which establishes a state tax credit for rehabilitating certified historic structures, an economic generator in urban and rural areas throughout the state.

The THC has a significant responsibility to the people of Texas. We protect the resources that define the Lone Star State's proud history. Our biennial accomplishments toward achieving this goal are documented on these pages.





Fort Lancaster
State Historic Site,
Sheffield



2013-14 BIENNIAL REPORT DIVISION ACCOMPLISHMENTS

COMMUNITY HERITAGE DEVELOPMENT

The Community Heritage Development Division (CHD) continues to demonstrate its passion for preservation by developing significant partnerships with Texas' cities, counties, and nonprofit organizations. In the past biennium, the division has revitalized historic areas, stimulated tourism, and encouraged economic development through innovative preservation strategies.

One of the ways this is being accomplished is through the THC's Texas Main Street Program, which provides downtown revitalization services to 87 communities across the state. The agency provides on-site visioning, strategic planning, design, and other organizational assistance to Texas' rural and urban areas.

During the past biennium, CHD has also been developing statewide heritage tourism efforts by assisting with a transition from individually printed travel guides for 10 heritage regions to a single, larger Texas Heritage Travel Guide. The new guide will provide a more-sustainable product for the THC's heritage organizations, and recognizes that visitors do not confine their travel to single regions of the state.

In the last two years, the division also invested heavily in web and social media promotion geared to the travel market. The THC's Texas Time Travel website unifies travel information for all 10 heritage trail regions under one statewide umbrella, allowing locational, thematic, and point-to-point searches.

Looking forward, CHD is excited about introducing a channel of mobile heritage tours to assist statewide travelers. Initial tours in development include African Americans in Texas, Hispanic Heritage Travel, the Bankhead Highway, Texas in World War II, and the La Salle Odyssey.

The Texas Main Street Program

The Texas Main Street Program (TMSP) helps communities across the state revitalize their historic downtowns and neighborhood commercial districts through historic preservation and economic development. The TMSP guides the communities in creating priorities,





including the recruitment of managers, stakeholders, and volunteers. The program provides architectural and graphic design services, free of charge, to help the local organization and Texas-grown businesses, including logo and sign development, retail merchandizing, conceptual design for façade and building improvements, color selection, accessibility compliance, environmental sustainability, and preservation assistance.

A CHD professional assists participating communities in urban and community planning efforts, while an economic development specialist suggests tailored strategies and policies for the city to create a business and financial climate that cultivates small businesses and entrepreneurship. TMSP staff members adapt program services to fit the diverse needs of the individual communities.

Since its inception in 1981, the program has helped generate \$2.9 billion in reinvestment in Texas downtowns and urban neighborhood commercial districts, created more than 31,600 jobs, and established more than 8,100 new businesses across 171 communities. Volunteers have contributed more than 1.1 million hours to their Texas Main Street cities during the past 14 years, time that is valued at more than \$23 million. During a reporting period roughly equivalent to fiscal years 2013 and 2014, nearly \$250 million of private and public funds were invested in the downtowns of official Main Street communities.

The benefits of the TMSP can be seen in a larger collection of emerging and vibrant downtowns. Signs of revitalized Main Street communities across Texas include new and stronger retail businesses, reduced vacancies, new downtown residents, increased dining opportunities, public events, renewed public infrastructure such as sidewalks and utilities, landscaping, parking management, nighttime uses, and restored public and private buildings.

During the past biennium, the THC designated Caldwell, Childress, San Augustine, Sealy, and Waco as new official Texas Main Street communities, while Cuero returned to the program as a re-certified community. Assisted by a two-decade long public-private partnership with the Independent Bankers Association of Texas, all six of these communities received the traditional visit from the First Lady of Texas to kick off participation in the Main Street Program.

At the end of fiscal year 2014, there were 87 official Texas Main Street communities, including urban programs, serving nearly 2.6 million Texans. The focus of the Texas program is generally smaller (more rural) communities, with 84 percent of the participating communities having populations below 50,000 and a median population of 13,712. Sixty-eight programs have served continuously without interruption, while 19 current communities have returned after dropping the program and then realizing the value lost while not participating.





The TMSP partners with the Texas Department of Agriculture on the Texas Capital Fund, providing Texas Main Street communities with an exclusive and competitive matching pool of \$600,000 for local initiatives such as downtown infrastructure improvements and accessibility. Since being established in 1993, the Texas Capital Fund has provided more than \$12 million in federal assistance, resulting in more than \$25 million in local projects within Main Street cities.

The THC also provides a training network for the local communities, where new managers and boards receive on-site and centralized training in organization, promotions, design, and economic restructuring. All participating cities are provided ongoing training through twice-annual meetings, on-site consultation, and phone or online consultations.

During fiscal year 2013, the staff logged nearly 3,000 hours of work for specific projects requested by local communities. The design staff only represents a portion of this time commitment, but follow-up reports from constituents reveal that TMSP's design services directly assisted \$5.3 million of local reinvestment in 2013.

Other totals reported by the local programs and tracked by the agency for the 2013–14 period include: more than 1,400 rehabilitation projects worth more than \$67 million; \$56 million in new downtown construction; the sale and purchase of \$42.6 million of downtown real estate; net gains of 707 business starts and nearly 2,900 new jobs in Main Street Districts; and a gain of approximately 2,100 downtown residents and nearly 1,200 housing units. In total, more than \$166 million of private funds were reinvested in TMSP communities during the period roughly equivalent to the 2013–14 biennium.

Heritage Tourism and the Texas Heritage Trails Program

The THC is charged with promoting heritage tourism by assisting local governments, organizations, and individuals in preserving, enhancing, and promoting heritage and cultural attractions in the state. The program is required to raise the standards of heritage and cultural attractions around Texas; foster heritage preservation and education; encourage regional cooperation and promotion of heritage and cultural attractions; and foster effective local tourism leadership and organizational skills.

The Texas Heritage Trails Program (THTP) has traditionally relied on printed guides to promote travel to the state's communities and heritage sites. Hundreds of thousands of guides are distributed annually through TxDOT Travel Information Centers, consumer travel shows, direct fulfillment, and local or regional visitors centers and bureaus. During the past biennium, the THTP has been assisting with the transition from individually printed guides for each of the 10 regions to a single, larger Texas Heritage Travel Guide. Staff members are also anticipating the upcoming release of a Hispanic Heritage Travel Guide.



The rise of digital media has increased opportunities for reaching receptive audiences, but has not lessened the demand for printed materials. The agency has invested heavily in web and social media promotion geared to the travel market. The Texas Time Travel website provides both comprehensive and curated information about the state's best heritage destinations and travel experiences. In the past two years, the website and its affiliated 10 regional sites have been optimized for the increased use of mobile devices.

In the past 15 years of the THTP, its heritage regions covering all 254 counties have raised more than \$1.6 million in regional cash contributions, \$2.5 million in in-kind contributions to fund their operations, and more than 58,000 volunteer hours. In fiscal years 2013 and 2014, the agency and partners continued leveraging state funds to access \$8.9 million in federal transportation enhancement grant funds for heritage tourism efforts and support for the THTP. Congressional action in 2012 precludes the use of federal transportation enhancement grants through TxDOT as a funding source for the THTP beyond fiscal year 2015.

In this biennium, the agency continued a multi-year advertising campaign for the THTP designed to promote heritage travel within the regions through a series of print and online ads as well as an interactive, unifying website (www.texastimetravel.com) for heritage travelers on desktop and mobile devices. In addition, the websites for each of the 10 trail regions continued to contain dynamic, engaging, and interactive content.

In addition to the THTP, the THC's overall heritage tourism program works to develop and promote the state as a tourist destination in conjunction with the agency's historic sites, the Office of the Governor—Economic Development & Tourism, Texas Department of Transportation, Texas Commission on the Arts, and the Texas Parks and Wildlife Department. The agency coordinates tourism efforts through a multi-agency Memorandum of Understanding, an annual statewide Strategic Tourism Plan, and the Texas State Agency Tourism Council.

According to the Office of the Governor—Economic Development & Tourism, Texas tourism is a \$67 billion industry, with visitor spending in the state directly supporting 599,000 jobs in 2013 and generating \$4.7 billion in state and local taxes. Previous studies have demonstrated that heritage tourism accounts for at least 10 percent of overall state travel expenditures. According to studies commissioned by the Office of the Governor, travel parties in Texas who visit a historic site spend \$438 more per trip than the average Texas traveler.





Texas Treasure Business Award

In 2013, the Texas Treasure Business Award returned. First established by the Legislature in 2005, this program helps illustrate that the Texas economy is strong, and that this is a great place to do business. More than 120 of the state's independent businesses received the award in 2013. Near the close of fiscal year 2014, more than 200 businesses across the state had been designated. Twenty-eight of the recognized businesses were established in the 19th century.

To date, the oldest designated business is Gibbs Brothers & Company, L.L.C. in Huntsville, continuously family owned and operated in Texas since 1841. Although not required for recognition, this business continues to operate out of a historic building.

For a list of Texas Treasure Business Awards by county from the 2013–14 biennium, please see the Appendices.

First Lady's Texas Treasures Award

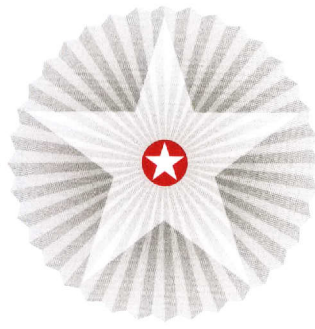
In 2008, the agency initiated the First Lady's Texas Treasures Award program to recognize and promote communities that have exhibited a long track record of historic preservation, economic revitalization, community development, and heritage tourism. Established in coordination with the First Lady of Texas and public and private partners, the award honored two communities in 2013 and 2014: Paris and Denton.

Certified Local Government

The THC's Certified Local Government (CLG) program helps cities and counties foster an alliance among designated representatives, community leaders, and elected officials by providing technical and financial assistance through participation in the federal Historic Preservation Fund grants-in-aid program. The CLG Program places a heavy emphasis on supporting local communities and their residents.

There are 72 CLGs in Texas (57 cities and 15 counties). More than 10 million Texans reside within CLG communities. Newly certified communities during the biennium were Denton County, Longview, Rockwall, and the city of Uvalde.

The THC distributes at least 10 percent of its federal apportionment to CLGs in the form of matching grants-in-aid. In the past two years, approximately \$288,000 in federal grant funding was distributed to 22 CLG communities for local preservation projects, creating a total investment exceeding \$576,000. Such projects include surveying and documenting historic resources, training local commission members, and rehabilitating historic buildings.



ARCHITECTURE DIVISION

The THC's Architecture Division is charged with a compelling mission: to preserve and protect Texas' diverse architectural heritage. Staff members provide design and rehabilitation advice to help preserve properties that span the state's rich history, from majestic historic county courthouses and commercial buildings, to Spanish missions and simple log cabins.

During the past biennium, the Architecture Division helped organize several important county courthouse rededications, including the resurrection of the 1902 Newton County Courthouse following a heroic 12-year effort. Following a long-term and strategic endeavor, La Salle County proudly presented its newly restored Art Deco style courthouse, designed and built in 1931 during an era of prosperity. In May 2014, an enthusiastic crowd gathered to celebrate the completion of the 1908 Hardeman County Courthouse in Quanah.

Also during the biennium, Architecture Division staff members assisted with many vital Federal Historic Preservation Tax Incentive projects, including the former Dallas Coffin Company building and the remarkable Anson Mills Building in El Paso. In addition, staffers assisted with the review of Camp Mabry in Austin, including its 1892 parade ground, wood-frame and brick World War I-era buildings, and limestone-clad structures dating to the Works Progress Administration.

Since 2010, Architecture Division staff has been working diligently to review housing and infrastructure projects in areas affected by Hurricanes Dolly and Ike. The Disaster Recovery Program represents an outstanding partnership between the THC and the Texas General Land Office (which manages the state's grant program), as well as the City of Galveston Historic Preservation Office and the Galveston Historical Foundation.

Architecture Division staff members are also continuing extensive consultations regarding the planned Space Exploration Technologies Corporation (SpaceX) launch facility at Boca Chica Beach, near Brownsville. The facility will accommodate up to 12 launches per year, and requires a license from the Federal Aviation Administration, subjecting the project to THC review under Section 106 of the National Historic Preservation Act.



Texas Historic Courthouse Preservation Program

During the biennium, several county courthouse rededications took place including the 1902 Newton County Courthouse in December 2012. As with many courthouse rededications, the celebration included a school band, a children’s choir, and a quartet of beauty queens. County Judge Truman Dougharty oversaw the courthouse restoration effort, and offered an emotional thanks to the THC, “without whom it simply would not have happened.”

Following a long-term strategic effort, La Salle County proudly presented its newly restored Art Deco courthouse in January 2013. The county entered the courthouse program in 2000 as an economically disadvantaged recipient of a National Trust for Historic Preservation grant. Now, the area is booming with Eagle Ford Shale oil and gas activity.

In May 2014, an enthusiastic crowd gathered in Quanah to celebrate the completion of the 1908 Hardeman County Courthouse. Speakers included state- and county-elected officials, who graciously commended the county for its efforts. Following the ceremony and tours, a chuckwagon dinner event provided barbecue on the courthouse lawn.

Former Gov. George W. Bush and the Texas Legislature created the Texas Historic Courthouse Preservation program in 1999. Using funds appropriated by the Legislature, the program’s unique mission and scope bring the state, counties, and local citizens together in a special partnership to restore and revitalize these historic courthouses—not as museums, but as viable working government centers symbolic of the past and the future.

Since the inception of the program, \$251 million has been awarded to 91 counties for the preservation of their courthouses. Including the FY 2013 appropriation of \$4.2 million, construction activity related to the program has or will have generated nearly 10,000 jobs, more than \$21 million in local taxes, and more than \$22 million in state taxes.

As of August 31, 2014, 65 county courthouses have been fully restored with the assistance of this program. Eighteen counties have received emergency and planning grants and are awaiting major construction funds to complete their projects. Each project includes completely restored exteriors, district and county courtrooms, and public corridors. In several instances, ornate roofs, central towers, decorative treatments of vault doors, stenciling, and wood graining have been recreated. In all cases, building codes, accessibility, and new mechanical, electrical, and plumbing systems are included in the scope of work.

In order to protect and preserve these buildings for future generations, the Texas Courthouse Stewardship Program was created in 2005 to assist counties by fostering facility planning, budgeting, and training. The goal is to ensure that these important landmarks are property





maintained into the future. The THC hosted a stewardship workshop during the biennium, sponsored by the Texas Land Title Association. The successful workshop included an impressive number of participants from counties that received grants in Rounds I through VIII. The stewardship program also provides site visits, easement monitoring, technical consultations, and maintenance planning guidance to counties with restored courthouses.

The award-winning Texas Historic Courthouse Preservation Program is one of the most far-reaching historic preservation programs ever conceived by state government, and has received national and international recognition, including the prestigious Preserve America Presidential Award in 2008. Texas' historic courthouses have been named for the second time to the National Trust for Historic Preservation's 11 Most Endangered Historic Places list, demonstrating the continued need to generate greater awareness and resources in the ongoing effort to preserve and restore this unique collection of architectural treasures.

Please see the Appendices for a list of historic county courthouses administered during the 2013–14 biennium.

Texas Historic Preservation Tax Credit Program

During the 83rd legislative session, the Texas Legislature passed House Bill 500, which establishes a state tax credit for the certified rehabilitation of certified historic structures. This incentive requires work on a historic property to meet the Secretary of the Interior's Standards for Rehabilitation to qualify for the credit. The THC is responsible for certifying that those standards have been met for every project.

Certified historic structures can include properties that are currently listed in the National Register of Historic Places, either individually or as part of a historic district, or designated as Recorded Texas Historic Landmarks or State Antiquities Landmarks. All of these designations are administered by the THC. The credit is worth 25 percent of the eligible rehabilitation costs for the project. In the absence of a state income tax, the credit is applied against a business' franchise tax liability.

Small business owners without franchise tax liability can sell their credits to others, and this transferability is likely to make this a very popular program. Many projects will seek to pair this credit with the existing 20 percent federal rehabilitation tax incentive program, resulting in a large increase in the number of projects requiring THC review.

The Texas Historic Preservation Tax Credit Program goes into effect on January 1, 2015 for properties placed in service on or after September 1, 2013. During fiscal year 2014, the THC adopted new administrative rules for implementation of the new program.





Federal Historic Preservation Tax Incentives

The Federal Historic Preservation Tax Incentives program is one of the nation's most successful and cost-effective community revitalization programs, offering a federal tax credit worth 20 percent of the qualified rehabilitation costs for buildings listed in the National Register of Historic Places. The program fosters private sector rehabilitation of historic buildings and promotes economic revitalization. The program is jointly managed by the National Park Service (NPS) and the Internal Revenue Service in partnership with State Historic Preservation Offices.

One of the more notable Federal Historic Preservation Tax Incentive projects during the past biennium was the 1911 Dallas Coffin Company building. Its first floor originally housed administrative offices and sales rooms, while coffins and caskets were finished on the upper floors of the building. A developer purchased the building in 2010 and undertook a rehabilitation project to transform the building from a warehouse into a hotel. The THC and the NPS reviewed the proposed project under the federal 20 percent rehabilitation tax credit program. Upon the \$10.9 million project's completion in late 2012, it was certified by the NPS.

For a list of Federal Historic Preservation Tax Incentive applications reviewed by the THC during the 2013–14 biennium, please see the Appendices.

Section 106 Reviews

Section 106 of the National Historic Preservation Act of 1966 requires federal agencies to consider what effects their actions, funding, permit, or license may have on historic properties. It also allows the Advisory Council on Historic Preservation to comment on such actions. The THC's Archeology, Architecture, and History Programs Divisions conduct Section 106 reviews to assess the degree of potentially damaging effects on historic properties and archeological resources. In the past biennium, the three divisions collectively conducted more than 29,210 Section 106 reviews.

During the past biennium, Architecture Division staff assisted with the proposed Brownsville Generating Station, an 800-megawatt natural gas fired power plant that requires a greenhouse gas permit from the Environmental Protection Agency. A Memorandum of Agreement for this significant Section 106 project, currently under development, will include provisions for more than \$2 million in donations from Tenaska, the project developer, to be dedicated toward improvements at the nearby Palo Alto Battlefield National Historical Park. These include landscape restoration, development of interpretive features and programs, and trail work.





Texas Preservation Trust Fund

The THC awards grants for preservation projects from the Texas Preservation Trust Fund (TPTF), an interest-earning pool of public and private monies. As a result of the 82nd legislature's budget reductions in 2011, the TPTF grant program was suspended. In 2013, the 83rd Texas Legislature reinstated the grant program. Grants were not awarded during the 2013–14 biennium. The THC anticipates awarding grants during fiscal year 2015.



HISTORY PROGRAMS DIVISION

The History Programs Division (HPD) has been intensifying its efforts to document and preserve the real stories of Texas' compelling heritage. HPD staff members partner with Texans, County Historical Commissions, museums, cemetery associations, local governments, state and federal agencies, and other organizations to identify, evaluate, and interpret Texas' unique and significant historic resources.

One of the most exciting statewide projects the agency embarked on during this biennium was documenting, highlighting, and promoting the role that historic highway routes played in the development of our state. The Texas Legislature created the Historic Roads and Highways Program in 2009 to identify, interpret, and market historic roads and highways to as wide an audience as possible.

Also during this biennium, the THC hired a youth education coordinator to develop classroom materials and assist with educational programming designed to excite students and teachers about the real places that tell the real stories of Texas history. HPD staff have been exploring programs such as the National Park Service's "Teaching with Historic Places," developing engaging curricula based on the agency's historic sites, and partnering with local school districts to make presentations at teacher training workshops. Staffers have also embarked on an initiative to use agency programs and historic places to inspire, educate, and inform young Texans about the importance of preserving Texas' historic resources.

In the past two years, HPD's Military Sites Program began efforts to document the contributions of Texans during the Cold War, when Texas was host to dozens of Department of Defense sites.





HPD staff members are proud to host ongoing Cold War oral history workshops, which train local communities and organizations to capture the personal stories of the brave men and women who served during this important era of American history.

Texas Historic Roads and Highways Program

As a first step in implementing the Historic Roads and Highways Program, the THC and the Texas Department of Transportation (TxDOT) began a partnership this biennium to document and tell the story of historic highway routes—such as the Bankhead and Meridian Highways—to assist communities and interested citizens in promoting their history and unique stories to heritage tourists, researchers, and local residents.

The Bankhead Highway, one of the nation’s first transcontinental highways, was established in 1916 and runs approximately 850 miles across the state of Texas, from Texarkana to El Paso. This biennium, using federal Transportation Enhancement Funds, the THC and TxDOT oversaw the creation of a statewide context of historic highways in Texas, and a survey of historic resources along the Bankhead Highway, including photographs and information on property types such as historic gas stations, motels and tourist courts, extant segments of historic brick streets, and bridges.

Community outreach meetings held in the summer and fall of 2013 in communities along the historic Bankhead Highway brought local citizens out to share their stories, photos, and memories of the roadway and its lasting influence on local history and community development. The THC created a dedicated Historic Highways page on its website that allows travelers and enthusiasts to create travel itineraries, view historic and current photographs of a wide range of historic road-related structures, and learn more about this fascinating roadway known as “The Broadway of America.”

The THC and TxDOT signed an interagency agreement in February 2014 to begin the second project under the Historic Roads and Highways Program, which will focus on the historic Meridian Highway, an international highway running from Canada to Mexico. It roughly parallels today’s I-35, with a lateral branch going from Waco to Galveston. The Meridian project will follow the same two-year process as the Bankhead Highway, with funding from a Federal Transportation Enhancement grant.

Military Sites Program

Texas has a unique military history reflecting the state’s stages of growth and the governments that contributed to its development. The Military Sites Program (MSP) was developed to help provide the proper tools and support for these special aspects of Texas history.





The MSP began efforts this biennium to document the contributions of Texans during the Cold War. The Cold War was an intense political, military, and economic conflict that began after World War II and continued into the early 1990s. Throughout the Cold War, Texas was host to dozens of Department of Defense sites, and many Texans served their country both in the military and on the home front during the decades of this international conflict.

In August 2013, the THC hosted its first Cold War oral history workshop to train local communities to capture the personal stories of the brave men and women who served during this important era of American history. The workshop was held in a decommissioned 1960s-era Atlas F Missile silo near Lawn, in Taylor County. This site provided a first-hand view of an important historical site, and showcased an actual location where Texas played an important role in this military conflict. This initiative will continue into the next biennium.

During the past biennium, the MSP also continued its efforts with the agency's Texas in World War II initiative. The program's key components during this biennium included hosting 10 regional oral history training workshops, developing enhancements for the program's agency webpage, and placing historical markers to commemorate World War II topics in Texas. A major project for this initiative was completing the state's first comprehensive historic sites survey of more than 1,800 military and home front sites.

In fiscal years 2013 and 2014, the MSP continued programming for its Texas Sesquicentennial of the American Civil War initiative. Through the Texas Civil War Monuments Fund, the MSP raised private donations to continue the placement of granite monuments on battlefields where Texas forces fought.

In each year of the biennium, the MSP conducted annual Park Day activities at Palmito Ranch Battlefield National Historic Landmark (NHL). The MSP continues to work with local preservationists to increase interpretive efforts at Palmito Ranch Battlefield NHL, including a land-banking project for a portion of the core battlefield, assistance with the placement of a raised interpretive overlook, and the local CHC's preparations for the May 2015 sesquicentennial anniversary of the battle.

The MSP also continued to raise \$45,000 in grants and gifts for THC-coordinated military history projects as a match requirement for this program.

Youth Education

The THC hired a Youth Education Outreach Coordinator in FY 2014 to focus on creating educational outreach opportunities for youth involvement in agency activities. Since arriving at the agency, this staff member has been working with all agency divisions to improve,





expand, and produce new and exciting programming opportunities. Additional initiatives include developing new ways to use THC programs to inspire, educate, and inform Texas youth about the importance of the history and preservation of Texas' historic resources.

County Historical Commission Outreach

County Historical Commissions (CHC) preserve county historic resources across Texas by conducting programs suggested by the county commissioners court and the THC.

The CHC Outreach program manages contact information for more than 5,000 CHC appointees, and uses this information to educate, network, and partner with local, regional, and statewide organizations. In July 2014, one program specialist was hired to promote CHC accomplishments and work with the THC's government liaison.

State statutes direct CHCs to use the Statewide Preservation Plan to coordinate efforts and provide an annual report of activities to the THC. CHC Outreach develops annual reports that are categorized by Statewide Preservation Plan goals to encourage CHCs to fulfill both of these statutory responsibilities. There were 168 CHCs that submitted a report of their 2012 activities and 160 CHCs that submitted a report of their 2013 activities. According to the reports, 397,848 CHC volunteer hours were documented for 2012 and 441,402 volunteer hours were documented for 2013, resulting in 839,250 volunteer hours total for the biennium.

Based on CHC reports submitted this biennium, Distinguished Service Awards (DSAs) were given to 88 counties for the 2012 year of service and 87 counties for the 2013 year of service. The reports also indicate that for every \$1 counties invest in CHCs, a statewide average of \$5 worth of service is returned. The \$1.6 million in county money provided to Texas CHCs during the 2012 year of service was supplemented by CHCs with \$1,053,588 from grants, donations, and fundraisers to accomplish projects for counties.

Cemetery Preservation Program

Historic cemeteries across Texas are threatened by development, uncontrolled vegetation, vandalism, and theft. The THC coordinates the efforts of concerned citizens and assists them with cemetery preservation efforts through the Historic Texas Cemetery (HTC) designation program. The HTC designation records historic cemeteries in the county deed record to alert the public and owners of land adjacent to the cemetery of its existence.

During the 2013–14 biennium, 24 cemeteries in 23 counties received an HTC designation. There are more than 1,600 cemeteries designated throughout the state, with at least one designation in each county. For a list of HTCs designated during the past biennium, please see the Appendices.



Official Texas Historical Marker Program

Official Texas Historical Markers interpret and promote the state's diverse historic and cultural resources. Texas has the most active and successful historical marker program in the country, one based on a unique state and county partnership.

During the past biennium, the THC marker program staff revised application forms, scoring criteria, and other materials for electronic distribution through the THC website. This has increased the efficiency and quality of the marker application process, while making information available to all 254 Texas counties. The staff presents marker research workshops and makes site visits as time and resources allow. In addition, staff conducts workshop webinars to reach a broader audience and reduce travel costs.

The State of Texas has placed more than 16,000 historical markers throughout the state. During the past biennium, the THC placed 327 new historical markers. One particularly successful initiative has been the state's undertold marker program, financed through the marker application fees of new and replacement markers. More than 90 of these markers have been placed or are being researched, helping to address historical gaps, promote diversity of topics, and proactively document significant undertold or untold stories. For a listing by county of markers placed during the past biennium, please see the Appendices.

Museum Services Program

The THC's Museum Services Program staff consults with history museums throughout the state on how to achieve national museum standards in all areas of operations. This assists local communities with educating Texans about our state's history as well as increasing tourism opportunities. Services available to the estimated 950 history museums throughout the state include email updates; email, telephone and in-person consultations; dissemination of educational and reference materials; and workshops and webinars dealing with such topics as financial management, strategic planning, museum education, public programming, and exhibit development.

During 2012–14, staff responded to more than 200 requests for assistance and consultations with museums. During this same period, program staff offered 11 workshops and one webinar on five topics; developed two workshop curriculum; worked with 20 community partners to host workshops; and instructed nearly 300 museum staff and volunteers in the areas of storytelling, interpretive writing, selecting images for exhibits, strategic planning, and historic house museums.

State and Federal Review/National Register of Historic Places

Historians and architectural historians in the History Programs Division worked throughout the biennium to apply National Register criteria to properties under consideration for





various state and federal grant programs for which National Register eligibility is a factor. History Programs Division staff reviewed more than 6,700 projects in FY 2013 to determine whether those projects would impact above-ground properties eligible for listing in the National Register. As part of these Section 106 reviews, staff reviewed more than 4,700 properties and determined that 349 of those properties were eligible for listing in the National Register and could potentially be affected by proposed federal undertakings.

At six National Register State Board of Review meetings held between September 2012 and August 2014, board members reviewed 61 nominations for listing in the National Register; through the two-year period, 443 properties (including nine districts) were listed by the Keeper of the National Register of Historic Places. Listings of Texas properties continue to reflect the diverse and rich heritage of the state. For a listing of all properties added to the National Register this biennium, please see the Appendices.

Texas Holocaust and Genocide Commission

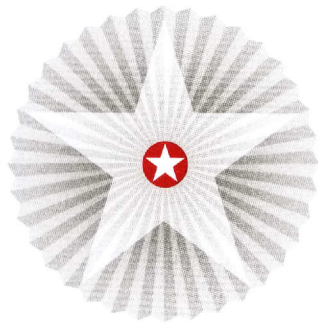
In 2009, The Texas Legislature created the Texas Holocaust and Genocide Commission (THGC) and assigned it administratively to the THC.

During the biennium, the THGC completed its Texas Liberators Oral History project. Teaming with Baylor University's Institute for Oral History, the THGC interviewed 19 Texans who helped liberate concentration camps during World War II, chronicling their significant stories for future generations to access through video, audio, and text. The THGC developed lesson plans to accompany the oral histories for classroom use.

The THGC also successfully administered grants to a number of non profit institutions during the biennium, providing funds for educational projects in El Paso, Dallas, and Houston. Additionally, hundreds of students across the state participated in the THGC's video contest, allowing public and private school students from grades 6–12 to tackle contemporary issues such as bullying, gang violence, and drug use. The THGC also organized a traveling Bosnian Genocide exhibit for Texas communities with little access to local Holocaust and genocide resources.

THGC commissioners continued to prioritize education during the biennium, recruiting volunteers—many of whom have had decades of classroom experience and advanced degrees in education and related fields—to compile an extensive list of resources that educators can use to meet Texas Essential Knowledge and Skills (TEKS) requirements as they teach Holocaust and genocide topics in Texas classrooms. The THGC also developed digital workshops in cooperation with the Texas Education Agency for access through its Project Share website, where educators throughout the state can take the courses.





HISTORIC SITES DIVISION

The Historic Sites Division takes pride in overseeing the preservation and interpretation of 20 significant historic sites across the state that tell the real stories of Texas history. From Victorian mansions to sacred burial mounds to pivotal battlegrounds, the THC's historic sites exemplify a breadth of Texas history.

Every day heritage tourists can learn more about Texas' real places and stories at one of the sites. In fact, during the biennium, more than 625,000 people did just that.

During fiscal years 2013 and 2014, with capital funds made available by the Texas Legislature, the THC completed eight major restoration projects; constructed four service or support structures; and added new exhibits at six different sites. Using staff and operational funds, we completed 180 major maintenance projects, produced a variety of educational materials for distribution to the public, completed four interpretive master plans, and conserved 98 significant artifacts.

Interpretation

Significant improvements were made to interpretation at the THC's historic sites during the biennium. The sites have also presented numerous public programs. Outreach to local schools and teachers is ongoing, and educational materials were produced and distributed. We are also using social media, cell phone tours, online exhibits, and our websites to engage new visitors in Texas history and encourage visitation.

Collections

This biennium, four important archeological collections associated with the historic sites were processed and inventoried. More than 7,100 bags of artifacts and 200 boxes of collections were removed from original field containers and curated to museum standards. Conserved objects include two plantation sugar kettles, a mid-19th-century furnace, two oversized formal portraits and their frames, and a late-19th-century grandfather clock.

The THC's State Historic Sites

Acton, Acton, Hood County

Acton State Historic Site is the gravesite of Elizabeth Crockett, widow of Davy Crockett. Visitors to the site view the stately monument of Elizabeth, which was cleaned during the biennium to remove mildew and dirt that had accumulated on the surface of the monument.





Caddo Mounds, Alto, Cherokee County

During the biennium, we completed a major renovation and expansion of the site's visitors center, providing expanded and improved exhibit space, a covered outdoor education area, accessible restrooms, classroom, and museum store. A free-standing outdoor pavilion was also constructed adjacent to the building to support educational programs and demonstrations. Fabrication of new exhibits for the visitors center is nearing completion.

Casa Navarro, San Antonio, Bexar County

We developed new curriculum for use by 4th, 7th, and 11th grades so teachers and students achieve the maximum benefit during field trip visits. With funding for school transportation provided through a foundation grant, we served more than 640 area school children with our pilot program. Evaluations were very positive, and the program will be continued in fiscal year 2015. A historic foodways program, Salsa Navarro, was initiated and has attracted new audiences to learn about the lives and cultures of Tejanos in 19th-century San Antonio.

Confederate Reunion Grounds, Mexia, Limestone County

During the past two years, numerous improvements were made at the site, including renovating and stabilizing the site's historic features along the Navasota River and Jack's Creek. The area around the Val Verde cannon was improved with new paving and signage. The cannon received a new carriage to replace a modern reproduction that had deteriorated.

Eisenhower Birthplace, Denison, Grayson County

Based on a new interpretive master plan completed in fiscal year 2012, improvements were made to the presentation of the site, exhibits, and public programs. A number of preservation and accessibility concerns were also addressed, including repairs to the Red Store in preparation for increased programming in that building. A new HVAC system in the birthplace house will provide improved climate control for the benefit of the artifacts as well as visitors. A new maintenance canopy was added that has enhanced the functionality of the existing maintenance building.

Fannin Battleground, Fannin, Goliad County

Use of the site has increased since the major preservation and new exhibit projects were completed in 2012. A new online exhibit was also completed during the biennium. New education programs related to site history have been offered during the biennium in partnership with thematically related sites. The pavilion at the site was repainted, and rotted wood and the roof were replaced during the biennium.

Fort Griffin, Albany, Shackelford County

During the biennium, the site's visitor center was completely renovated and expanded, providing a new exhibit gallery, a covered outdoor interpretive plaza, museum store,





and new accessible restrooms. A new orientation exhibit was developed and installed. The historic site bakery, cistern, and well were also restored. In addition, construction was initiated on a new maintenance building for the site.

Official Texas State Longhorn Herd

The Official Texas State Longhorn Herd is headquartered at Fort Griffin, but is managed in partnership with the Texas Parks and Wildlife Department (TPWD). Major improvements to conditions and facilities for the herd, such as cleaning and replacing water troughs, fixing fences and water gaps, and coordinating grazing locations were made at Fort Griffin. The breeding program for the herd continued to be improved by identifying the historical longhorn characteristics and selecting cows and bulls that exhibit those desired traits. In fiscal years 2013–14, more than 25 public outreach programs were organized and presented by the herd manager with support from THC and TPWD staff.

Fort Lancaster, *Sheffield, Crockett County*

During the biennium, architects completed the design of an expansion of the site’s visitors center and a new orientation exhibit. The renovated visitors center with new exhibits will reopen in the coming year.

Fort McKavett, *Fort McKavett, Menard County*

In the past biennium, site staff focused on developing educational programs, including continued collaboration with the Texas State Historical Association to host “Old Stories, New Voices,” a summer camp for children from disadvantaged urban communities. During fiscal years 2013 and 2014, more than 100 school-age students participated. A new interpretive master plan for the site was completed, and the first phase of a major repair and renovation project of the many doors and windows on the historic buildings was also completed. The water filtration system at the site was replaced and upgraded.

Fulton Mansion, *Rockport, Aransas County*

An extensive preservation project is underway on the 1877 mansion to address a wide variety of issues including structural problems, water infiltration, and interior climate control. The unique construction of the building has made the project challenging and extremely complex. Because we were able to complete a new visitors center in early fiscal year 2013, the site has continued serving visitors during the preservation project.

Landmark Inn, *Castroville, Medina County*

Planning was completed for an extensive project at Landmark Inn that will address the preservation needs of six of the seven historic buildings on the site. Work will include



masonry and carpentry repairs, HVAC system replacement, and reversal of non-historic interventions to provide a more cohesive visitor experience.

Levi Jordan Plantation, Brazoria, Brazoria County

During the biennium, an interpretive master plan for the site was completed. In addition, architects reached completion on the first phase of design for a new visitors center and maintenance facility for the site. New interpretive orientation exhibits are also being developed, and once these visitor facilities are completed the site will be open to the public for the first time.

Magoffin Home, El Paso, El Paso County

The adaptive reuse of the 1901 Justice Home to serve as a visitors center for Magoffin Home is nearing completion. Located across the street from the historic site, the completed project will provide ample visitor parking, visitor reception and orientation areas, and flexible meeting and classroom space to accommodate various community outreach programs. Staff offices and archive storage space are also included, allowing the interpretation of additional rooms in the Magoffin Home that were previously used for these functions. The completed visitors center will feature a new orientation exhibit, which will be the basis for enhanced educational programs.

National Museum of the Pacific War, Fredericksburg, Gillespie County

Exterior rehabilitation of the Nimitz Hotel was completed, including window and door repairs, structural reinforcement, and painting. This project has had a strong positive impact due to the prominent location of this building along the main street in Fredericksburg. A long-term, multi-phase project is in design for improvements to the Pacific Combat Zone at the site, and new exhibits are in development for this area.

Sabine Pass Battleground, Sabine Pass, Jefferson County

During the biennium, staff expanded and updated the interpretive material available to visitors with a new cell phone tour and a web-based exhibit. Staff also installed the newly restored walking beam from the Civil War vessel, *USS Clifton*, along with an interpretive panel that discusses the gunboat's role during the battle at Sabine Pass and how the beam functioned.

Sam Bell Maxey House, Paris, Lamar County

Research on historic interior paint and other finishes was completed as part of the first phase of a historic furnishings plan that will provide a road map for restoration of the interiors and improved interpretation. New education programs have been offered to attract more family and school groups. Site staff has made significant progress in collections documentation and care.





Sam Rayburn House Museum, *Bonham, Fannin County*

An interpretive master plan completed in 2014 provides the foundation for new exhibits and improved educational programming in the future. Planning is underway for the stabilization and adaptive use of the historic barn on the site to house several site-associated vehicles and provide indoor program space. Mrs. Evelyn Cross of Bonham donated Rayburn's 1953 Chevy automobile to the THC. This vehicle tells an important part of Rayburn's story and makes a very significant addition to the site's interpretation.

San Felipe de Austin, *San Felipe, Austin County*

An architectural firm was selected for an extensive site improvement project that will include a new education and orientation center, a maintenance building, roads and parking, and outdoor interpretation and assembly spaces. A business plan completed for the site was the basis for facilities planning. The 1936 Centennial monument of Stephen F. Austin was cleaned and its original patina restored.

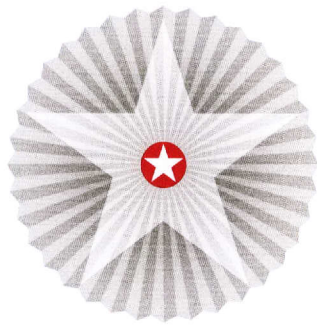
Starr Family Home, *Marshall, Harrison County*

During the biennium, staff completed a historic furnishings plan for the Maplecroft mansion that documents the newly interpreted historic interiors and provides a plan for additional interior restoration. This will document the story of domestic service in the late 19th century. A new pavilion was constructed, which will be used for rentals and site programming in the future as staff continues to make improvements to site landscaping and interpretation. Two signature objects—important family portraits—were professionally conserved.

Varner-Hogg Plantation, *West Columbia, Brazoria County*

The plantation house's wood shingle roof was replaced to protect the building and artifacts. During the biennium, an exhibit contractor was hired to design new orientation exhibits to be installed in the visitors center and at Miss Ima's Cottage. Several outdoor interpretive panels will be designed to enhance the visitor experience at the site.





ARCHEOLOGY DIVISION

The Archeology Division (AD) works to identify, protect, and preserve Texas' irreplaceable archeological heritage. Using a regional approach to benefit every Texas community, archeologists and staff have led a variety of exciting activities and investigations during the past biennium to support this mission.

In addition, via upcoming publications and ongoing public outreach throughout the state, the AD is sharing these discoveries with all Texans. These efforts have fostered coordination with multiple federal and state agencies, academic organizations, and the resilient Texas Archeological Stewardship Network (TASN), which celebrated its 30th anniversary in 2014.

Recent discoveries on land and in the Gulf of Mexico have expanded our understanding of Texans' shared history. A recent geophysical survey at San Felipe de Austin, one of the THC's historic sites, uncovered the remains of a buried structure dating to the 1820s. Initial research and geophysical prospecting at the Old Socorro Mission site, a portion of which is a State Antiquities Landmark, seeks to identify the location of the Piro Pueblo village and cemetery associated with the 1684 mission. In a collaborative effort, an AD-assisted deep-water exploration off the Texas Gulf Coast identified the Monterrey shipwrecks, three early-19th century shipwrecks that may represent a privateer and its prizes or an armed escort safeguarding vulnerable merchant vessels.

Texas Archeological Stewardship Network

Established in 1984, the TASN is a significant THC volunteer program administered by the AD. It has been designated as a Preserve America Steward for its effectiveness and efficiency in protecting Texas' archeological heritage, and is nationally recognized as a unique and cost-effective program. Stewards help AD archeologists with activities such as finding, recording, and monitoring important archeological sites. Stewards were key participants during test excavations conducted at the San Felipe de Austin State Historic Site in Austin County in June 2014.

Since the beginning of FY 2013, more than 18,890 hours were donated by TASN members. This represents the equivalent of 10 FTEs and a tremendous savings to Texas taxpayers. The cost equivalent of this amount of time—at the rate of \$23.40 per hour in FY 2013, the hourly rate set for Texas by the Independent Sector coalition—would be nearly





\$442,100. Stewards also travel at their own expense to assist with program activities. Since the beginning of FY 2013, they reported traveling more than 105,000 miles; at the State of Texas reimbursement rate of 55.5 cents per mile for FY 2013, this amounts to a significant donation—equivalent to more than \$58,000.

Marine Archeology Program

One of the highest-profile and most-exciting initiatives of the THC, the AD's Marine Archeology Program is responsible for protecting, preserving, and investigating historic shipwrecks in all state-owned waters of Texas.

During the past biennium, the Marine Archeology Program garnered national attention for its assistance with three historic shipwrecks, known as the Monterrey shipwrecks, located more than 170 miles off Galveston. The THC worked in partnership with archeologists from the Meadows Center for Water and the Environment at Texas State University, NOAA's Office of Ocean Exploration and Research and the Office of National Marine Sanctuaries, the Bureau of Ocean Energy Management, and the Bureau of Safety and Environmental Enforcement. Project planning commenced in mid-2013 and culminated in the collection of more than 60 artifacts, which are currently being conserved at Texas A&M University's Conservation Research Laboratory (CRL).

Conservation and analysis of artifacts from the *U.S.S. Westfield*—a Civil War gunboat recovered from the Texas City Channel—also contributed to the local economy during this biennium. Construction of exhibits by the CRL for the Texas City Museum totaled \$25,000.

The Marine Archeology Program reviewed more than 350 projects during this biennium, resulting in 17 new or extended and ongoing antiquities permits for marine archeological remote-sensing surveys. These were assigned to private cultural resource management (CRM) firms as specified by Section 106 and the Antiquities Code of Texas. On average, there were 8.5 ongoing projects per year, producing approximately \$510,000 annually for CRM organizations, according to Texas' primary underwater archeological contracting firms.

The THC also worked with the Lake Worth Management Office and the Fort Worth marshal to investigate alleged looting at an early-20th century shipwreck in Lake Worth. A site form (41TR271) was created and submitted with assistance from a student intern. The THC has nominated the site as a State Antiquities Landmark.

The Marine Archeology Program benefitted greatly from volunteer student interns during the biennium. Interns contributed a total of 306 hours, which are valued at more than \$7,160 (at the rate of \$23.40 per hour for Texas in FY 2013, as set by Independent Sector).





***La Belle* Shipwreck**

The wreck of *La Belle* continues to attract worldwide attention to Texas. The hull timbers will be reassembled as a part of a temporary exhibition at the Bullock Texas State History Museum in Austin.

The excavation, conservation, analysis, and exhibition of *La Belle* continue to have far-reaching economic impacts. Overall, the project's direct input to the economy is approximately \$9 million, with \$1 million during Fiscal Years 2013 and 2014 alone.

The La Salle Odyssey, a series of exhibits in seven museums in six coastal counties, continues to boost local economies by exploring the saga of La Salle's expedition in 1684–87. As part of the Bullock museum's upcoming temporary and core exhibits on *La Belle*, the institution is spending \$100,000 to promote the La Salle Odyssey museums with the development of a new website.

The Corpus Christi Museum of Science and History is the state repository for marine artifacts, and prominently exhibits artifacts from both *La Belle* and the 1554 Spanish Treasure Fleet. The museum receives approximately 65,000 visitors a year, with 72 percent traveling from outside the area. Estimating travel expenses for each outside visitor at \$100, money spent in the local economy for the last two years is \$9.2 million.

In-house accomplishments relating to the *Belle* project were greatly supported by volunteer student interns. For the biennium, more than 600 hours were contributed to this project; using the Independent Sector's rate, this contribution is valued at nearly \$14,140.

State and Federal Review

The AD reviews more than 4,000 development projects in Texas each year that are covered under the jurisdiction of the Antiquities Code of Texas and the National Historic Preservation Act. During the biennium, these reviews have facilitated millions of dollars in federal grants, which funded projects in all parts of the state and benefitted the host communities.

The AD's reviews also have generated revenue for small- to medium-sized Texas businesses, such as engineering and natural and cultural resource consulting firms. Through contracts with public agencies and other entities, these firms profit from work performed in association with more than 450 cultural resource surveys and test and data-recovery investigations. Out of the 450, approximately 400 are survey-level investigations performed each year at an average rate of about \$17,000 per survey.

Altogether, this produces approximately \$6.8 million per year, or \$13.6 million over the biennium, for small- and medium-sized businesses in Texas. Similarly, the approximately





50 test and data-recovery investigations conducted each year generate about \$50,000 per project, or \$2.5 million annually, for \$5 million in revenue generated over the biennium for the state's small- and medium-sized business sector.

Texas Archeology Month

Texas Archeology Month (TAM) offers heritage tourism opportunities across the state, drawing thousands of people to rural communities and metropolitan areas each October. For FY 2013, there were 58 TAM events held in 35 communities. For FY 2014, there were 145 TAM events held in 28 cities in 28 counties, attracting 12,743 attendees. By factoring this attendance with the average heritage day-tripper expenditures from D.K. Shifflet & Associates Ltd. *2011 Texas Visitor Profile*, the economic impact exceeds \$225,000.

Historic Texas Lands Plaques

To recognize Texas landowners who preserve important archeological sites on their properties, the THC developed the Historic Texas Lands Plaque program. A plaque was presented to Ben and Belle Gallant in October 2013, acknowledging their exemplary efforts to preserve historic Caddo Indian sites on their property in Nacogdoches County.

Curatorial Facility Certification Program

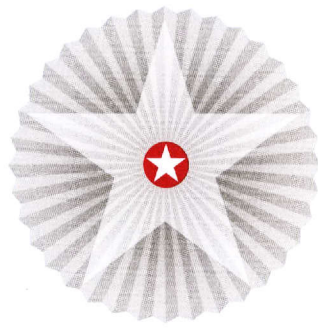
The THC established the Curatorial Facility Certification Program (CFCP) to set standards for the care of Texas' held-in-trust artifact collections. Millions of the state's historical and archeological artifacts—irreplaceable state assets—are currently stored in museums and curatorial facilities across the state. Since the program was established in 2005, 14 curatorial facilities have been certified.

During the biennium, the National Museum of the Pacific War (NMPW) applied to become a CFCP-certified facility. The NMPW has completed and submitted its self-evaluation, and will receive final consideration by the commission. By preserving Texas' irreplaceable archeological collections in museums, repositories, and heritage tourism sites across the state, the CFCP plays an important role in attracting tourists to communities, generating substantial revenue for the local groups and creating jobs for lab directors, collections staff, and curators.

Antiquities Advisory Board

The Antiquities Advisory Board (AAB) is composed of 10 volunteer experts—including three members of the THC appointed by the chair—in the fields of archeology, history, and historical architecture. During the past biennium, AAB members met quarterly and advised the THC on issues relating to the Antiquities Code of Texas, including reviewing State Antiquities Landmark (SAL) nominations and making recommendations to the commission with regard to SAL designation.





PUBLIC INFORMATION AND EDUCATION DIVISION

The Public Information and Education Division (PIE) leads agency efforts to share the THC’s work and successes in historic preservation, community empowerment, and cultural diversity. We ensure that the public is aware of these opportunities and, more importantly, the real stories that tell the great history of Texas.

PIE prioritizes public outreach and education, and reaches our audience across the most efficient and productive channels. Since the last legislative session, PIE launched a new website built on best-practice content management principles and technology, grew subscriptions of our quarterly newsletter to its largest audience ever, and reached new generations of Texans with social networks and content-marketing tactics.

Public Information

Preservation news is thoroughly covered in *The Medallion*, the agency’s free quarterly newsletter that now reaches more than 15,000 people via subscription and digital access. The publication fulfills the agency’s mandate to educate Texans about their state’s history and promote economic development in rural areas.

In 2013, the THC launched a new website (www.thc.state.tx.us), featuring an enhanced user experience and offering staff the ability to update and share information more efficiently than ever. Both resources provide the public a way to learn about issues facing Texas preservationists as well as share success stories, tools, and economic resources throughout the state.

PIE also develops and implements promotional plans and materials including brochures, flyers, invitations and ads; plans and executes special events, press conferences, and grand openings; develops heritage tourism-specific promotions; and creates signage and displays for agency events.

Outreach and Education

In the past two years, PIE has explored and launched new initiatives utilizing affordable resources that reach different audiences and demographics with our agency’s messaging. For example, a new monthly electronic newsletter launched in April 2014 quickly grew from 6,498 to more than 7,400 subscribers, reaching by email many Texans who don’t use social media.





For social media users, the THC maintains an active presence on Facebook, Twitter, Instagram, YouTube, Flickr, and an agency blog. These platforms not only push out vital information and news, but create virtual communities of enthusiasts who become partners in our work distributing information to the public.

All of the THC's social media channels have been utilized for numerous coordinated outreach campaigns that have been integrated with other digital and traditional media efforts, as well as partner efforts. Klout, a company that ranks people's or organizations' influence on social media, has placed the THC in the top 10 percent of social media users.

Finally, PIE's efforts in regards to media relations create a statewide network of reporters and writers who highlight THC's work and accomplishments to large audiences across the state. In two years, THC stories placed in newspapers generated more than \$4.3 million in publicity value.

In the coming biennium, PIE will expand on these efforts, make statistics-driven improvements to the website, and remain at the forefront of new social media and communications technology. We will reach more people in Texas—and beyond—than ever before.



FRIENDS OF THE TEXAS HISTORICAL COMMISSION

The Friends of the Texas Historical Commission (Friends) is a nonprofit 501(c)(3) corporation dedicated to supporting the initiatives of the THC. A board of 24 trustees governs the organization.

Two staff changes occurred during the last biennium. In October 2012, the Friends hired a new development assistant, and in January 2013, the organization hired a new executive director.

The Friends website launched in December 2012. The development plan, which included an expanded communications plan, was refined. The Friends also initiated fundraising for key initiatives, including the Fulton Mansion restoration, the restoration of the 1936 Centennial markers, the Cold War Oral History Project, the Civil War monument at Glorieta Pass, and the restoration of the Starr Family Home portraits.





In FY 2013, the Friends raised \$214,077. Assets managed by the Friends for the benefit of the THC totaled \$1,094,846. Unrestricted assets totaled \$387,836; temporarily restricted assets totaled \$493,702; and \$211,142 was permanently restricted in endowments. In FY 2013, the Friends board allocated \$125,000 for THC projects, including restoration of the Fulton Mansion; a video at Caddo Mounds State Historic Site; the Cold War Oral History Project; restoration of 1936 Centennial Markers in East Texas; portrait restoration at the Starr Family Home; and the Texas Heroes Endowment.

The Friends launched its first annual fund campaign in October 2013. As of August 2014, the Friends have raised an unprecedented amount in unrestricted funds for the THC, totaling more than \$100,000. As part of this effort, the Friends hosted events in Fort Worth and Alpine in conjunction with the quarterly THC commission meetings. More than 150 donors and prospective donors attended both events. The Friends currently has 247 Texas Heroes, 228 of whom are new donors as a result of the FY 2014 effort. As of August 2014, assets managed by the Friends for the benefit of the THC total \$1,132,999. Of these funds, \$303,947 is permanently restricted in endowments to benefit the THC.

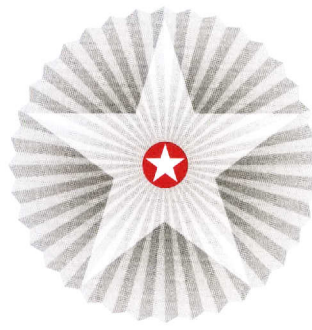
The Friends continues to host popular development seminars, which include day-long workshops on fundraising fundamentals and grant writing. During the last two years, 104 participants from across the state attended these workshops.

The Friends 2014 summer internship program had 28 applicants, a 35 percent increase from 2013. The two selected interns worked with the THC's Undertold Markers program and the Texas Holocaust and Genocide Commission.

The Friends also provided training and assistance across THC divisions for implementation of agency-wide use of the cloud-based constituent relationship management system (NEON) to manage events, mailing lists, communications with constituents, registrations, and tracking donor cultivation and solicitation activities. Since January 2013, 3,235 records have been added to the system. The Friends also helped coordinate the launch of the THC e-newsletter utilizing the NEON database.

During the last two years, the Friends has received and/or facilitated grants from the following organizations totaling more than \$400,000: Trull Foundation, Strake Foundation, The Brown Foundation, Ed Rachal Foundation, AEP Foundation, Summerfield G. Roberts Foundation, Texas Historical Foundation, The Summerlee Foundation, the I. D. and Marguerite Fairchild Foundation, Texas Land and Title Association, Texas Independent Bankers Association, The Eva and Marvin Womack Foundation, French Heritage Society, Austin Civil War Roundtable, and National Park Service.





CONCLUSION

The Texas Historical Commission has come a long way since its humble beginnings as the Texas State Historical Survey Committee in 1953. This report proudly documents the THC’s many impressive accomplishments during the past biennium, while maintaining focus on the positive direction awaiting Texas and our agency in the coming years.

The THC has effectively documented and preserved Texas’ historical legacy, and we will continue to pursue this passion for preservation—from educating new and native Texans about our state’s proud history, to creating jobs and economic development opportunities, to identifying and designating irreplaceable historic sites. For six decades, the agency has helped communities across the state develop strong ties to their roots through revitalization projects and educational programs. We will continue to serve the State of Texas and its citizens by providing these vital needs as long as necessary resources are available.

It may seem contradictory that an agency like ours is so focused on the future; however, during the past biennium, we have solidly advanced our mission, integrated our values, and offered new services to communities across the state. We are enthusiastic and hopeful that the coming two years will allow us to provide new generations in a changing Texas with a connection to their past. Now more than ever, the THC will ensure Texas’ real places are telling their real stories. ★



APPENDIX **A**

TEXAS HISTORICAL COMMISSION MEMBERS

The Texas Historical Commission (THC) consists of 13 members appointed by the governor to serve staggered, six-year terms. The governor appoints the chairman.

Appointees have a broad knowledge of and commitment to the mission of the agency. The THC board meets quarterly. THC members for fiscal years 2013–14 include:

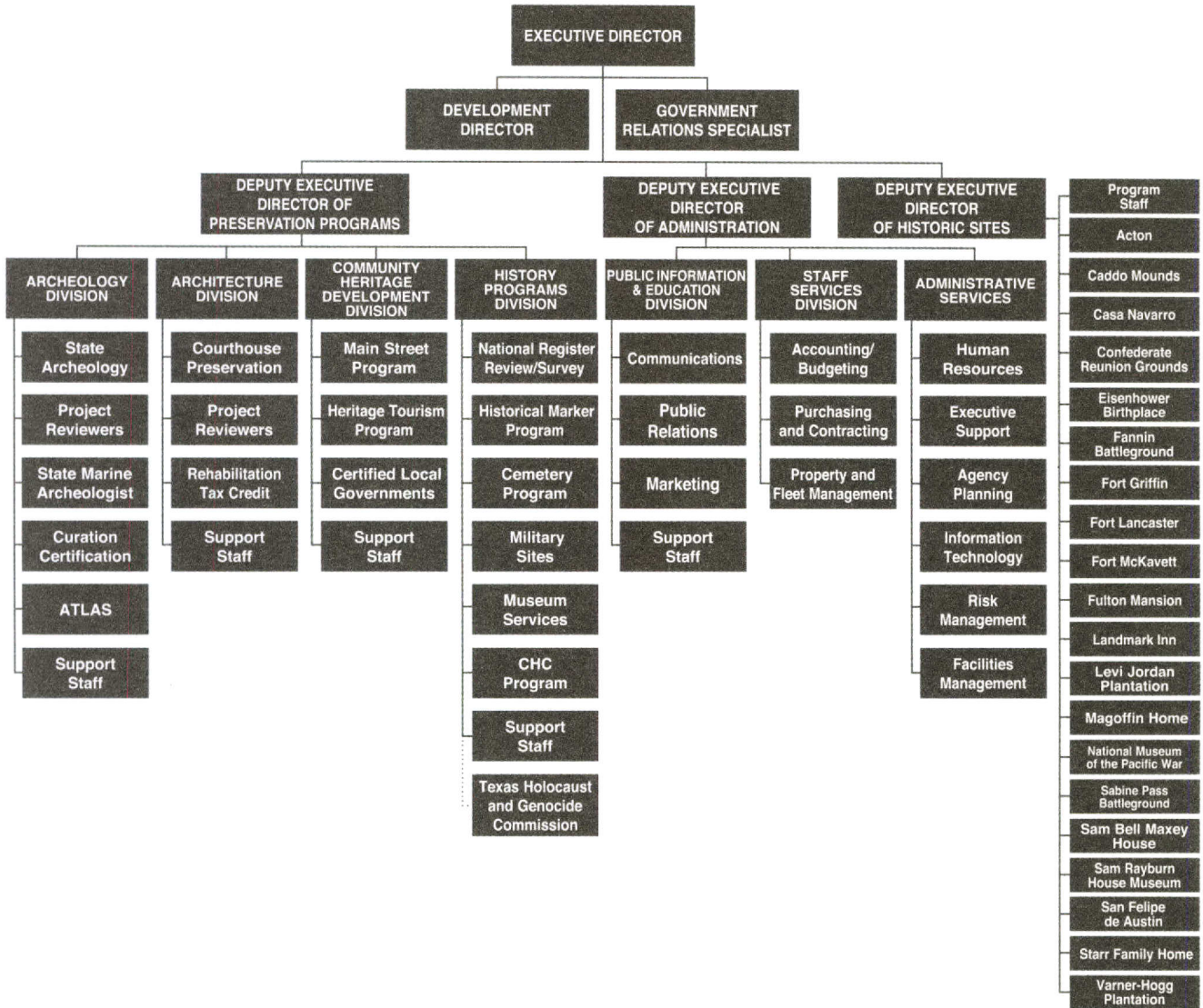
COMMISSION MEMBER	RESIDENCE	TERM EXPIRATION (FEB.)
Earl Broussard, Jr.	Austin	2017
John W. Crain	Dallas	2019
Michael Donegan	McLendon-Chisholm	2015
August W. Harris III	Austin	2015
Thomas M. Hatfield	Austin	2017
Steven L. Highlander	Austin	2015
Tom Perini	Buffalo Gap	2017
Gilbert E. Peterson, Chair	Alpine	2019
Judy Richardson	Caldwell	2017
Robert K. Shephard	Weatherford	2017
Nancy Steves	San Antonio	2015
Daisy Sloan White	Houston	2017
Vacant position		2015





APPENDIX B

TEXAS HISTORICAL COMMISSION ORGANIZATIONAL CHART





APPENDIX

13-14

HISTORICAL DESIGNATIONS

The following list includes new historical designations approved by the Texas Historical Commission and related boards. The designations are categorized by county. The listings include:

- National Register of Historic Places
- Recorded Texas Historic Landmarks
- Official Texas Historical Markers
- State Antiquities Landmarks
- Historic Texas Cemeteries
- Texas Treasure Business Awards

ANDERSON

Official Texas Historical Marker
 New Hope Baptist Church
 P. L. Chism
 Pilgrim Hill Baptist Church
 Roy B. Wallace
 William Freeman

ANGELINA

Official Texas Historical Marker
 First Baptist Church Diboll

Recorded Texas Historic Landmark
 Masonic Hall, Lufkin

Historic Texas Cemetery
 Brown Cemetery

ARANSAS

Recorded Texas Historic Landmark
 Joe A. and Bertha Harper House, Rockport
 Smith-Brundrett House, Rockport

ATASCOSA

Official Texas Historical Marker
 First Baptist Church of Poteet
 North Pleasanton

AUSTIN

Official Texas Historical Marker
 Citizens State Bank
 Fisches Park
 Joachim H. Hintz
 San Felipe United Methodist Church
 Trinity Lutheran Church

Recorded Texas Historic Landmark
 Hackbarth Building, Sealy

Historic Texas Cemetery
 Brast Cemetery
 Williams Cemetery

BANDERA

Official Texas Historical Marker
 Bandera, "Cowboy Capital of the World"
 Great Western Cattle Trail

BASTROP

Texas Treasure Business Awards
 Elgin Cotton Oil Mill, Elgin
 McGee Brothers, Elgin

BAYLOR

Texas Treasure Business Awards
 Tip Top Dry Cleaners, Seymour

BEE

Official Texas Historical Marker
 American Legion Post No. 818

Historic Texas Cemetery
 Glenwood Cemetery

BELL

National Register of Historic Places
 Killeen Downtown Historic District,
 Killeen

Official Texas Historical Marker

Alvin Ailey
 Anna Laura Cole
 Knob Creek Lodge No. 401, A.F. & A.M.
 Temple College
 Texas State Soil and Water Conservation
 Board
 Yee Pat Ling

Historic Texas Cemetery
 John Porter Blackburn Cemetery

Texas Treasure Business Awards
 Cochran, Blair & Potts, Belton
 Fikes Wholesale, Inc., Temple

BEXAR

National Register of Historic Places
 Hays Street Bridge, San Antonio

Voelcker Farmstead Historic District, San Antonio

Official Texas Historical Marker
 Belknap Place
 Scenic Loop–Boerne Stage–Toutant
 Beauregard Historic Corridor

Recorded Texas Historic Landmark
 Locke Hill Auditorium, San Antonio
 Toltec Apartments, San Antonio

State Antiquities Landmark
 Brackenridge Park

Texas Treasure Business Awards

Bolner's Fiesta Products, San Antonio
 Buckhorn Saloon & Museum, San Antonio
 Cox Manufacturing, San Antonio
 Ford, Powell & Carson, Architects &
 Planners, Inc., San Antonio
 Frontier Enterprises, San Antonio
 Garza Bomberger & Assoc., San Antonio
 J.R. Mooney Galleries of Fine Art, San Antonio
 John T. Floore Country Store, Helotes
 Natural Bridge Caverns, San Antonio
 Red McCombs Auto, San Antonio
 The RK Group, San Antonio

BLANCO

Official Texas Historical Marker
 Dr. James F. Barnwell

Texas Treasure Business Awards
 Strickland Drugs, Blanco
 Whittington's Jerky/Johnson City Locker
 Plant, Johnson City

BORDEN

Official Texas Historical Marker
 Mushaway Peak

BOSQUE

Official Texas Historical Marker
 Norse Seventh Day Adventist Church

BOWIE

National Register of Historic Places
 Texarkana Jr. College and Texas High
 School, Texarkana

Texas Treasure Business Awards

Aycock Distributing Co., Texarkana
 Bryce's Cafeteria, Texarkana
 F.W. Offenhauser & Co., Inc., Texarkana
 Firmin's Printing & Office Equipment Co.,
 Texarkana
 Freeman Nurseries, Inc., Simms
 Shelton Feed & Fertilizer, New Boston





BRAZORIA

Official Texas Historical Marker
Byrd Lockhart
First Presbyterian Church of Brazoria
Robert L. and Julia Martin Hunter

Recorded Texas Historic Landmark
Schuster Home, Freeport

State Antiquities Landmark
Levi Jordan Plantation Site, 41BO165

BREWSTER

Official Texas Historical Marker
Federico Villalba
J.C. Bird

Recorded Texas Historic Landmark
Albion E. Shepard House, Marathon

BRISCOE

Historic Texas Cemetery
Milo Cemetery

BROWN

Official Texas Historical Marker
"Hey Paula"

BURLESON

Official Texas Historical Marker
Goodwill Missionary Baptist Church
Woodson Lumber Company

Texas Treasure Business Awards
Woodson Lumber Company, Caldwell

BURNET

Official Texas Historical Marker
Captain Jesse Burnam

State Antiquities Landmark
Site 41BT391
Site 41BT397

CALDWELL

Official Texas Historical Marker
Luling Rosenwald School

CALHOUN

Official Texas Historical Marker
Dr. Edward Fred Knipling
Don Martin De Leon
German Immigration Through Carlshafen
Howard Gallemore Hartzog, Sr.
Sunlight Girls Club
The Battle of Norris Bridge
The Great Camel Experiment

CALLAHAN

Official Texas Historical Marker
Higginbotham Brothers and Company

CAMERON

Official Texas Historical Marker
Baldemar Garza Huerta a.k.a. Freddy
Fender

Recorded Texas Historic Landmark
Hinojosa House, Brownsville

Texas Treasure Business Awards
Adams & Graham, LLP, Harlingen
Alexandre's Fine Jewelry, Harlingen
Army Surplus Supply, Harlingen
Bonner & Bonner, Harlingen
Grimsell's Seed Co., Harlingen
McCullough & McCullough, Harlingen
Rio Elevator Co., Harlingen

CAMP

National Register of Historic Places
Pittsburg Commercial Historic District,
Pittsburg

CASTRO

Official Texas Historical Marker
Holy Family Cemetery
Home Mercantile

CHEROKEE

Texas Treasure Business Awards
Texas Basket Company, Jacksonville

COLLIN

Official Texas Historical Marker
City of Wylie
Copeville
First Baptist Church of Josephine
Frognot Community
Gus Wilson
Lavon
Murphy Community
Nevada
St. Paul

Recorded Texas Historic Landmark
E.A. Newsome House, McKinney
Fred Schimelpfenig Building, Plano
Mathews General Store, Plano
W.D. McFarlin Building, Plano

COLLINGSWORTH

Texas Treasure Business Awards
Jim's OK Tire Store, Wellington

COLORADO

National Register of Historic Places
Old Spanish Trail from U.S. 90 to Interstate
Highway 10, Columbus

Official Texas Historical Marker
Weimar Masonic Lodge No. 423

COMAL

National Register of Historic Places
Saint Joseph's Chapel, Schertz

Official Texas Historical Marker
Anhalt Halle and the German Farmer
Verein

Comal County Fair
Heinrich Mordhorst
Riley's Tavern
Spring Branch Post Office
Walzem Chapel

Recorded Texas Historic Landmark
Windwehen House, New Braunfels

Texas Treasure Business Awards
Riley's Tavern, Hunter

COMANCHE

National Register of Historic Places
Captain James and Susannah Cunningham
Homestead, Comanche

COOKE

Official Texas Historical Marker
American Paint Horse Association
G. H. Ragsdale
Sivells Bend United Methodist Church

COTTLE

Texas Treasure Business Awards
Arvis Davis Chevrolet, Paducah
First National Bank, Paducah
The Paducah Post, Paducah

CRANE

Official Texas Historical Marker
Castle Gap

DALLAS

National Register of Historic Places
511 Akard Building, Dallas
Joffre-Gilbert House, Irving

Official Texas Historical Marker
Big Spring
Charles Dilbeck Homes in Cochran Heights

Recorded Texas Historic Landmark
Harris-Savage House, Dallas
J.S. and Birtie Herfurth House, Rowlett
Oak Cliff Masonic Lodge, Dallas
St. Paul United Methodist Church, Dallas
Texas Theatre, Dallas

Texas Treasure Business Awards
Pendery's Taste Merchants, Dallas

DELTA

Historic Texas Cemetery
Shiloh Cemetery





DENTON

Official Texas Historical Marker
Justin

Recorded Texas Historic Landmark
Elm Fork Bridge, Dallas

Historic Texas Cemetery
Plainview Cemetery

DEWITT

Official Texas Historical Marker
Asberry School
Cuero Colored School

EASTLAND

Recorded Texas Historic Landmark
Carbon City Jail, Carbon

ECTOR

Official Texas Historical Marker
Captain Randolph B. Marcy's Southern
Route Expedition

EL PASO

Official Texas Historical Marker
La Frontera
Olga Kohlberg

ELLIS

Official Texas Historical Marker
Justin Jay Clarke

Recorded Texas Historic Landmark
McKinney-Aday Farm House, Waxahachie

Texas Treasure Business Awards
College Street Printing, Waxahachie
Happy's Home Furnishing, Waxahachie
Maxwell Jewelry, Waxahachie

ERATH

Official Texas Historical Marker
Hogan Blacksmith Shop

Texas Treasure Business Awards
Warnock Hardware, Bluff Dale

FALLS

Texas Treasure Business Awards
Model Laundry & Dry Cleaners, Marlin

FANNIN

Official Texas Historical Marker
First Baptist Church of Trenton
Gober Garage
Main Street Presbyterian Church

Texas Treasure Business Awards
Reeves Printing Co., Bonham
Smith Feed and Seed Store, Honey Grove

FAYETTE

National Register of Historic Places
Bedstead Truss Bridge, Schulenburg
East Navidad River Bridge, Schulenburg

Official Texas Historical Marker
Muldoon Community

Recorded Texas Historic Landmark
S.P.J.S.T. Lodge No. 1, Fayetteville

Texas Treasure Business Awards
Adamcik Appliance, LaGrange
Brasher-Gunn, LaGrange
Farmers Lumber, LaGrange
Fayette County Record, LaGrange
La Grange Chiropractic, LaGrange
Lukas Bakery, LaGrange
Man's D & Z, LaGrange
National Bank & Trust, LaGrange
Prause Market, LaGrange

FLOYD

Official Texas Historical Marker
The Battle of Blanco Canyon

FORT BEND

National Register of Historic Places
Methodist Church of Richmond, Richmond

FRANKLIN

Texas Treasure Business Awards
Mount Vernon Optic Herald, Mount Vernon

FREESTONE

Official Texas Historical Marker
W.L. Moody Confederate Reunion Grounds

GALVESTON

National Register of Historic Places
Broadway Cemetery Historic District,
Galveston
Stringfellow Orchards, Hitchcock

Official Texas Historical Marker
Captain Levi Charles Meyers Harby
Gaido's Famous Seafood Restaurant
George Nicholls
Juneteenth
Old Galveston Market House and City Hall

Recorded Texas Historic Landmark
Charles Albertson House, Galveston
Santa Fe Consolidated High School,
Santa Fe
Wegner House, Galveston

Historic Texas Cemetery
Wern Cemetery

Texas Treasure Business Awards
Gaido's Restaurant, Galveston

GARZA

Texas Treasure Business Awards
Hudman Funeral Home, Post
Hudman Furniture Co., Post

GILLESPIE

Texas Treasure Business Awards
Schaeffer Funeral Home, Fredericksburg
Weinheimer & Son, Inc., Stonewall

GOLIAD

Official Texas Historical Marker
Bull Durham Advertisement
First United Methodist Church of Goliad

GONZALES

Official Texas Historical Marker
William B. Fleming

Texas Treasure Business Awards
Adams Extract, Gonzales

GRAY

Texas Treasure Business Awards
Culberson Stowers, Inc., Pampa

GRAYSON

Official Texas Historical Marker
Waples-Platter Grocery Company

Recorded Texas Historic Landmark
W.B. and Ella Munson Home, Denison

Texas Treasure Business Awards
Dennard's Farm Supply, Whitesboro

GREGG

Official Texas Historical Marker
Johnny Cace's Seafood and Steak House
New Hope Missionary Baptist Church
Temple Emanu-El

Recorded Texas Historic Landmark
Longview Train Depot, Longview
Rembert-Harrison House, Longview

GRIMES

Official Texas Historical Marker
Lynn Grove United Methodist Church

GUADALUPE

National Register of Historic Places
Dublin Plantation, Kingsbury

Texas Treasure Business Awards
Starcke Furniture Co., Seguin

HALE

Texas Treasure Business Awards
Masso's Department Store, Plainview



**HARDIN**

Texas Treasure Business Awards
Hooks Title & Abstract Co., Kountze

HARRIS

National Register of Historic Places
San Jacinto Senior High School, Houston
The Astrodome, Houston

Official Texas Historical Marker
Cooley School
El Barrio del Alacrán
First Shiloh Missionary Baptist Church
Houston's Deep-Water Port
Louis Wiltz Kemp
St. Luke Missionary Baptist Church
Spring Creek County

Recorded Texas Historic Landmark
A.M. Armand House, Houston
Edwin and Daphne Neville House,
Houston
Mulcahy House, Houston
Roy and Lillie Cullen Building, Houston
W.T. Carter, Sr. House, Houston

State Antiquities Landmark
Camp Logan
Site 41HR796

Historic Texas Cemetery
Spring Peaceful Rest Cemetery

Texas Treasure Business Awards
Knapp Chevrolet, Houston

HARRISON

Official Texas Historical Marker
Dr. Matthew W. Dogan, Sr.
East Texas Baptist University
Marshall: Birthplace of Boogie Woogie
Melvin B. Tolson
Professor H.B. Pemberton

Recorded Texas Historic Landmark
Marshall Hall, Marshall

HASKELL

Official Texas Historical Marker
Josselet Switch

HAYS

National Register of Historic Places
Dripping Springs Downtown Historic
District, Dripping Springs

Official Texas Historical Marker
First Baptist Church
C.W. Burdett
Eddie Durham
Indian Mott Battle

Recorded Texas Historic Landmark
J.H. Barbee House, San Marcos

State Antiquities Landmark
Crook's Park Site, 41HY261

Texas Treasure Business Awards
San Marcos Daily Record, San Marcos

HENDERSON

Official Texas Historical Marker
Clinton Williams Murchison, Sr.
First United Methodist Church
Jess Sweeten

HIDALGO

National Register of Historic Places
Mary S. and Gordon Griffin House, McAllen

Official Texas Historical Marker
Elder B. Barton
Hilltop Gardens
Rio Grande Valley Livestock Show
Speer Memorial Library
Station KRGV-TV5

Texas Treasure Business Awards
Kautsch Lumber Co., Alamo

HILL

National Register of Historic Places
Nolan River Bridge 303-A of the Gulf,
Colorado and Santa Fe Railway, Blum

Recorded Texas Historic Landmark
Hubbard High School, Hubbard

HOOD

Official Texas Historical Marker
Nellie Gray Robertson

Historic Texas Cemetery
Friendship Cemetery

HOPKINS

Official Texas Historical Marker
George and Myra Wilson

HOUSTON

Official Texas Historical Marker
Brewington Baptist Church

Recorded Texas Historic Landmark
Daniel-Merriwether House, Kennard

Historic Texas Cemetery
Old Shady Grove Cemetery

Texas Treasure Business Awards
Darseys Furniture, Grapeland

HOWARD

National Register of Historic Places
Settles Hotel, Big Spring

HUNT

Official Texas Historical Marker
Burleson College

Recorded Texas Historic Landmark
Douglass School, Greenville

Texas Treasure Business Awards
Mary of Puddin Hill, Greenville

HUTCHINSON

Official Texas Historical Marker
Beale Road
Booker T. Washington School

JACK

National Register of Historic Places
Jack County Courthouse, Jacksboro

JACKSON

Official Texas Historical Marker
Edna Mexican School
G.W. Carver School

Texas Treasure Business Awards
Ganado Telephone Co., Ganado

JEFF DAVIS

Official Texas Historical Marker
Bentleyville

Recorded Texas Historic Landmark
Smith-Carlton Adobe House, Fort Davis

JEFFERSON

Official Texas Historical Marker
Fort Sabine
West Beulah Missionary Baptist Church

JIM WELLS

Official Texas Historical Marker
Alonso S. Perales

Texas Treasure Business Awards
FESCO, Ltd., Alice

JOHNSON

Official Texas Historical Marker
Southwest Metroplex Baptist Association

Recorded Texas Historic Landmark
Johnson Co. Feeders Supply

KARNES

Recorded Texas Historic Landmark
John Gawlik House, Panna Maria





KAUFMAN

Official Texas Historical Marker
Locust Grove

KENDALL

Official Texas Historical Marker
Adolph (Ad) Toepperwein
Dr. Ferdinand Ludwig Von Herff
Pinta Trail in Kendall County
Sisterdale

Recorded Texas Historic Landmark
Comfort School, Comfort

Texas Treasure Business Awards
Bergheim General Store, Bergheim
Bergmann Lumber, Boerne
Ebensberger-Fisher Funeral Home, Boerne
Lindner Feed and Milling Co., Inc., Comfort

KERR

Official Texas Historical Marker
Gatlin Site
HEB
Mosty Brothers Nursery
Notre Dame Catholic School
Scott Schreiner & Josephine Carr Schreiner

Texas Treasure Business Awards
Jerry Stephens Cedar Yard, Ingram
Mosty Brothers, Center Point

KIMBLE

Official Texas Historical Marker
Coach Bear Bryant and the Junction Boys

Texas Treasure Business Awards
Junction National Bank, Junction
Junction Warehouse, Junction

KINNEY

Official Texas Historical Marker
Las Moras Spring

KLEBERG

Official Texas Historical Marker
First United Methodist Church of Kingsville
Los Kinenos
Texas A&M University-Kingsville

Texas Treasure Business Awards
Harrel's Pharmacy, Kingsville

LAMAR

Official Texas Historical Marker
Paris Cotton Compress

LAMPASAS

Texas Treasure Business Awards
Smart Drilling & Supply, Lampasas

LA SALLE

National Register of Historic Places
Cotulla Downtown Historic District, Cotulla
Cotulla Ranch, Cotulla

Texas Treasure Business Awards
T.R. Keck & Sons, Inc., Cotulla

LAVACA

Official Texas Historical Marker
Cotton Grove Dance Floor and Store
Richardson Chapel United Methodist
Church
St. Paul's African Methodist Episcopal
(AME) Church
Witting School

Historic Texas Cemetery
Shiloh Cemetery

LEON

Official Texas Historical Marker
Boggy Community

Recorded Texas Historic Landmark
Evans Chapel Church, Leona vicinity

LIBERTY

Official Texas Historical Marker
Dayton's Old School
James B. Woods

Recorded Texas Historic Landmark
Judge Walter S. Neel House, Dayton

Texas Treasure Business Awards
First Liberty National Bank, Liberty

LIMESTONE

Official Texas Historical Marker
James Alfred Head
Munger Community

LIPSCOMB

Official Texas Historical Marker
Lipscomb School

Texas Treasure Business Awards
Born Machinery, Follett
Follett Food Market, Follett
Fronk Oil Company, Inc., Booker
Landers Oil & Propane, Higgins
Miller Supply & Construction, Booker
Ragan Food Locker, Darrouzett
The Booker News, Booker

LIVE OAK

Official Texas Historical Marker
Charles and Emma Tullis

Recorded Texas Historic Landmark
Chauncy and Minnie Canfield House,
Three Rivers
Cunningham Home, Three Rivers

LLANO

Official Texas Historical Marker
Granite Industry in Llano County
Lantex Theater

LUBBOCK

Recorded Texas Historic Landmark
Lubbock Women's Club, Lubbock
Original Lubbock Municipal Airport,
Lubbock

Texas Treasure Business Awards
Slaton Bakery, Slaton

LYNN

Official Texas Historical Marker
New Moore

MARION

Official Texas Historical Marker
Berea Community
Macedonia United Methodist Church

MASON

Official Texas Historical Marker
First Comanche-German Meeting
Peter's Prairie School

MATAGORDA

Official Texas Historical Marker
Van Vleck Independent School District
William Walter "Pudge" Heffelfinger

Texas Treasure Business Awards
Luther Hotel, Inc., Palacios

McLENNAN

Official Texas Historical Marker
G.W. Carver High School

Texas Treasure Business Awards
Read's Food Store, Mart
The Waco Citizen, Waco
Watson Feed Store, Mart

MEDINA

Official Texas Historical Marker
General Wool and the Chihuahua Road
Our Lady of Grace Catholic Church

Texas Treasure Business Awards
Ahr's Flower Shop, La Coste
Bourquin Automotive, Castroville
Castroville News Bulletin, Castroville
Castroville State Bank, Castroville





Cora's 471 Grill, Castroville
Dziuk's Meat Market, Castroville
Frank R. Danna, D.D.S, P.A., Castroville
Haby's Alsatian Bakery, Castroville
Paradise Canyon, Rio Medina
R.J. Mangold Grain Co., Inc., La Coste
Rio Medina Store, Rio Medina
Royce Groff Oil Co., Castroville
Sammy's Restaurant, Castroville
Stein Insurance Agency, Castroville
Tondre-Guinn Funeral Home, Castroville
W.R. Griggs Construction, Castroville

MILAM

National Register of Historic Places
R.F. Minta Pool House, Cameron

Official Texas Historical Marker
Wilson-Ledbetter Park

Recorded Texas Historic Landmark
Kay Theater, Rockdale

MILLS

Official Texas Historical Marker
Center City Baptist Church

MITCHELL

Texas Treasure Business Awards
Big Spring Education Employees Federal
Credit Union, Colorado City
City National Bank, Colorado City
Colorado City Record, Colorado City
Colorado Feed & Seed, Colorado City
Colorado Floral & Gifts, Colorado City
KVMC Radio, Colorado City
Mitchell County Abstract Co., Colorado
City
Producer's Cooperative Gin, Colorado
City
Ratliff Insurance Agency, Colorado City

MONTAGUE

Official Texas Historical Marker
First Baptist Church of Bowie
Illinois Bend School

Recorded Texas Historic Landmark
Montague County Courthouse, Montague
The Phillips House, Saint Jo

MONTGOMERY

Official Texas Historical Marker
Conroe Fire of 1911
Montgomery County Courthouses

MOORE

Official Texas Historical Marker
Route of Tascosa-Dodge City Trail

NACOGDOCHES

State Antiquities Landmark
Morris Jackson Site, 41NA304

Official Texas Historical Marker
Appleby
Campsite of St. Denis
Mission Nuestra Senora de la Purisima
Concepcion de los Hainais
Presidio Nuestra Senora de los Dolores de
los Tejas
San Patricio Rancho

NAVARRO

Official Texas Historical Marker
Francis Marion Martin
Magnolia Oil Refinery

Texas Treasure Business Awards
Collin Street Bakery, Corsicana
Corley Funeral Home, Corsicana
Oil City Iron Works, Inc., Corsicana
Old Mexican Inn Restaurant & Cantina,
Corsicana

NEWTON

National Register of Historic Places
Autrey-Williams House, Newton

Historic Texas Cemetery
McMahon Cemetery

Texas Treasure Business Awards
Newton County News, Newton

NUECES

Official Texas Historical Marker
Centennial Memorial Museum
Gold Star Court of Honor
Hilltop Tuberculosis Sanatorium
John Dix
Louis de Planque
Rabbi Sidney A. Wolf
Robstown Migrant Labor Camp
St. John Lutheran Church
Stanley L. Kostoryz

PANOLA

Historic Texas Cemetery
Anderson Cemetery

PARKER

National Register of Historic Places
Chandor Gardens, Weatherford

Official Texas Historical Marker
City of Aledo
Robinson Cabin/Slover School

Recorded Texas Historic Landmark
Millsap United Methodist Church, Millsap

Historic Texas Cemetery
Annetta Cemetery

POLK

Historic Texas Cemetery
Bluewater Cemetery

Texas Treasure Business Awards
Livingston Telephone, Livingston

POTTER

National Register of Historic Places
Fisk Medical Arts Building, Amarillo

Recorded Texas Historic Landmark
Polk Street United Methodist Church,
Amarillo

Texas Treasure Business Awards
Underwood Law Firm, Amarillo

RAINS

Official Texas Historical Marker
County Line School

RANDALL

Official Texas Historical Marker
Tex Randall

Recorded Texas Historic Landmark
Palisades State Park Concession Building,
Canyon vicinity

REFUGIO

Official Texas Historical Marker
Barefield School
Birthplace of Clara Driscoll

State Antiquities Landmark
Site 41RF13

RUSK

National Register of Historic Places
Monte Verdi Plantation, Cushing

Official Texas Historical Marker
Henderson Fire
Hickory Grove Baptist Church

SABINE

Official Texas Historical Marker
CCC Camp 2887 F-18-T
Starr Funeral Home

Recorded Texas Historic Landmark
Cedar Grove Baptist Church, Milam vicinity
Clark-James House, Hemphill vicinity

SAN SABA

Recorded Texas Historic Landmark
Estep-Burleson Building, San Saba





Texas Treasure Business Awards
Gibson Brothers, Bend

SHACKELFORD

Official Texas Historical Marker
Big Country Baptist Assembly
First Christian Church
Ibex
Robert Edward Nail, Jr.

SMITH

State Antiquities Landmark
Five Snakes Site, 41SM455
Lindsey Park Site, 41SM300
Recorded Texas Historic Landmark
Chilton-Taylor House, Tyler
Historic Texas Cemetery
McDougal Cemetery

STARR

Official Texas Historical Marker
Nuevo Santander Land Grants

TARRANT

National Register of Historic Places
Farmers and Mechanics National Bank,
Fort Worth
Fort Worth Recreation Building, Fort Worth
Fort Worth Warehouse & Transfer Company
Building, Fort Worth
Inspiration Point, Fort Worth
J.L. Sealy Building, Fort Worth
Van Zandt Cottage, Fort Worth
Official Texas Historical Marker
Fort Worth Belt Railway Company
Saginaw United Methodist Church
Recorded Texas Historic Landmark
Nash Farm, Grapevine
Historic Texas Cemetery
Saginaw Cemetery
Texas Treasure Business Awards
Archie's Gardenland, Fort Worth
Craddock Moving, Fort Worth
Freese and Nichols, Inc., Fort Worth
Gamtex Industries, Fort Worth
Grant Air Conditioning, Fort Worth
O B Macaroni, Fort Worth
Komatsu Architecture, Fort Worth
Renfro Foods, Inc., Fort Worth
Thos. S. Byrne, Ltd. (Byrne Construction
Services), Fort Worth
Weaver and Tidwell, L.L.P., Fort Worth

TERRY

Texas Treasure Business Awards
Jack Hamilton Tire Co., Brownfield

TITUS

Historic Texas Cemetery
Evergreen Cemetery

TOM GREEN

Texas Treasure Business Awards
Holland Jewelry, Inc., San Angelo
M.L. Leddy's, San Angelo

TRAVIS

National Register of Historic Places
Cranfill Apartments, Austin
East Main Street Historic District,
Pflugerville
Edgar H. Perry Jr. House, Austin
German American Ladies College, Austin
James M. and Leana B. Walsh House,
Austin
Kappa Kappa Gamma House, Austin
Lung House, Austin
Seaholm Power Plant, Austin
West Sixth Street Bridge at Shoal Creek,
Austin

Official Texas Historical Marker

Downs Field
George Washington Glasscock
Holy Cross Catholic Church and
Community
Oertli Dairy
St. Mary Missionary Baptist Church
Texas Confederate Woman's Home

Recorded Texas Historic Landmark

All Saints' Episcopal Church, Austin
Brown Building, Austin
Hancock Recreation Center, Austin
Helena and Robert Ziller House, Austin
Ireland and Mary Graves House, Austin
McClendon-Price House, Austin
Peter and Clotilde Mansbendel House,
Austin
Splitrock (Burns-Klein House), Austin
William T. and Valerie Mansbendel
Williams House, Austin

State Antiquities Landmark

Site 41TV1850
Site 41TV2360
Site 41TV2361

Texas Treasure Business Awards

Big Red, Inc., Austin
McBride's Guns, Inc., Austin
Page Southerland Page, Austin

TYLER

Historic Texas Cemetery
Ferrell

UPSHUR

Official Texas Historical Marker
Kelsey Academy
Historic Texas Cemetery
Brumley Crossroads Cemetery

UVALDE

National Register of Historic Places
First National Bank, Uvalde

VAL VERDE

Official Texas Historical Marker
Greater Mount Olive Baptist Church
Langston School
Tarver School

Historic Texas Cemetery

Old Langtry Cemetery

VAN ZANDT

Official Texas Historical Marker
Brick Streets of Wills Point
Cane Syrup Production in Van Zandt
County
C.S. Nicks
Dixie Hotel
Holly Springs United Methodist Church
Philip Nolan Expeditions Into Spanish
Texas

VICTORIA

Official Texas Historical Marker
First English Evangelical Lutheran Church

Texas Treasure Business Awards

Victoria Advocate, Victoria

WALKER

National Register of Historic Places
Austin Hall, Huntsville

Official Texas Historical Marker

Huntsville Branch Railway, or "Tilley's Tap"
Western Grove Baptist Church

Texas Treasure Business Awards

Gibbs Brothers & Company, LLC,
Huntsville

WASHINGTON

National Register of Historic Places
Seward Plantation, Independence

Official Texas Historical Marker

Cedar Creek Community
Friedens Church of Washington
Milroy's Garden and Orchard
Mount Rose Missionary Baptist Church
Rosedale Nursery





Recorded Texas Historic Landmark
Burton Public School, Burton
Fritz Paul and Emma Schroeder House,
Independence vicinity
Old Magnolia Building and Depot,
Brenham

Texas Treasure Business Awards
Hermann Furniture, Brenham

WEBB

Official Texas Historical Marker
Coal Mining in Las Minas

Texas Treasure Business Awards
La India Packing Co., Laredo

WHEELER

Texas Treasure Business Awards
First State Bank of Mobeetie, Mobeetie
Ware Chevrolet, Wheeler

WICHITA

Official Texas Historical Marker
Bethania Hospital
Burnett Horse Ranch
Wichita General Hospital

Texas Treasure Business Awards
Davenport Grocery, Wichita Falls
Dickey McGann & Rowe, Electra
Electra Lumber & Supply, Electra
Flusche Supply Inc., Electra
Fred's Auto Supply, Electra
Lilacs & Old Lace, Electra
Thomas Pump & Equipment, Electra
U.S. Machine Shop, Electra

WILLIAMSON

National Register of Historic Places
Olive Street Historic District, Georgetown

WILSON

Official Texas Historical Marker
Pat Higgins Grass Farms
Sutherland Springs School Site

Texas Treasure Business Awards
Koepp Chevrolet, Inc., La Vernia

WISE

Official Texas Historical Marker
Colonel Absalom Bishop
Dallas, Pacific & Southeastern Railway
East Side Elementary School
First United Methodist Church Alvord
Site of Old Town Paradise

Recorded Texas Historic Landmark
Perrin Log Cabin, Decatur vicinity

Texas Treasure Business Awards
Bridgeport Automotive Supply Co.,
Bridgeport
Flusche Auto Repair Co., Decatur
Holmes Auto Supply, Decatur
Wise County Messenger, Decatur

WOOD

National Register of Historic Places
Marcus DeWitt Carlock House, Winnsboro
Mineola Downtown Historic District,
Mineola

Recorded Texas Historic Landmark
Reneau Building, Golden

Texas Treasure Business Awards
Broadway Barbershop, Mineola
R.H. McCrary Hardware, Winnsboro
Wisener Field, Mineola

ZAVALA

National Register of Historic Places
Crystal City Internment Camp, Crystal City





APPENDIX **D**

GRANTS AWARDED

Texas Historic Courthouse Preservation Program

Former Gov. George W. Bush and the Texas Legislature created the Texas Historical Commission’s (THC) Texas Historic Courthouse Preservation Program in 1999, and it has since awarded \$251 million to 91 counties for the preservation of their county courthouses. The return on this investment is significant. Including Round VIII funding of \$4.2 million, construction activity related to the program has or will have created almost 10,000 jobs and generated more than \$21 million in local taxes. The program has further enhanced heritage tourism in communities across the state. The THC will seek an additional \$40 million from the Texas Legislature during the 2015 session.

Texas Historic Courthouse Preservation Program Active Grant Projects Administered During the FY 2013–2014 Biennium:

(Note: Round I–IV grant projects are complete)

ROUND V

COUNTY	AMOUNT
Cass	\$4,674,455

ROUND VI

COUNTY	AMOUNT
Franklin	\$2,125,000
Karnes	1,140,991
Potter	18,811

ROUND VII

COUNTY	AMOUNT
Bexar	\$2,536,147
Cameron	47,052
Colorado	3,245,087
Dickens	69,205
Edwards	1,332,814
Franklin	3,116,011
Hardeman	3,105,869
Navarro	4,439,997
Polk	339,227
Throckmorton	2,396,634
Upshur	234,213

ROUND VIII

COUNTY	AMOUNT
Callahan	\$450,000
Dickens	450,000
Dimmet	450,000
Hildago	450,000
Houston	89,182
Hunt	450,000
Jefferson	450,000
Karnes	450,000
Lamar	315,980
Lee	450,000
Limestone	41,103
Lipscomb	450,000
Lynn	179,204
Polk	203,353
Rains	14,870
San Saba	449,750
Upshur	113,514
Wilson	450,000





Federal Historic Preservation Tax Incentives

The Federal Historic Preservation Tax Incentives program is one of the nation’s most successful and cost-effective community revitalization programs, offering a federal tax credit worth 20 percent of the eligible rehabilitation costs for buildings listed in the National Register of Historic Places. The program fosters private sector rehabilitation of historic buildings and promotes economic revitalization. The program is jointly managed by the National Park Service and the Internal Revenue Service in partnership with State Historic Preservation Offices.

The THC reviews the three-part application prior to sending to the National Park Service for review. During the biennium, the THC reviewed 33 Part 1 applications evaluating the respective building’s significance, 20 Part 2 applications describing the proposed work, and 11 Part 3 applications describing the completed work, which indicated \$97 million was invested in the Texas economy.

INVESTMENT TAX CREDIT PROJECTS REVIEWED BY THE THC DURING FY 2013–2014

COUNTY	PROJECT	PART 1	PART 2	PART 3	REHAB COSTS
Bexar	Alameda Theater	9/10/13			
Bexar	Milam Building	3/19/14			
Bexar	Rand Building	2/16/13			
Bexar	Saint Anthony Hotel		2/16/13		
Bexar	Old Alamo National Bank Building		4/24/14		
Brazos	Parker Lumber Company Complex		4/24/14		
Brown	R.B. Rogers House		11/4/11	11/14/13	\$596,312.00
Collin	Collin County Mill and Elevator Company	6/3/14			
Dallas	Butler Brothers Building	7/25/14			
Dallas	Tower Petroleum and Corrigan Tower	9/5/12	9/21/12		
Dallas	Singer Sewing Machine Company Building	11/1/12			
Dallas	1512 Elm Street	11/1/12	9/21/12		
Dallas	Parlin and Orendorff	2/25/13	4/4/13		
Dallas	Mercantile Commerce Building	3/11/13	3/7/13		
Dallas	211 North Ervay	3/11/13	6/11/14		
Dallas	3333 Elm Street Building	6/25/13	7/24/13		
Dallas	West End Marketplace —Home Furniture Building	2/7/14			
Dallas	One Dallas Center	2/11/14			
Dallas	City Sewing Machine Building	4/25/14			
Dallas	English Village	5/12/14			

Note: Dates in bold reflect the THC review dates during the 2013–2014 biennium.

Continues next page





INVESTMENT TAX CREDIT PROJECTS REVIEWED BY THE THC DURING FY 2013–2014 (CONT.)

COUNTY	PROJECT	PART 1	PART 2	PART 3	REHAB COSTS
Dallas	One Main Place	6/18/14			
Dallas	1700 Commerce	7/25/14			
Dallas	Lone Star Gas Company Building		3/25/14		
Dallas	Dallas National Bank Building		12/3/04	1/20/14	\$6,115,664.57
Dallas	Continental Building		10/21/08	4/28/14	37,200,000.00
Dallas	Kessler Theater		12/2/09	1/16/13	894,484.00
Dallas	Dallas Coffin Company		12/17/10	10/29/12	10,907,684.00
Dallas	1505 Commerce		3/10/11	1/21/14	2,484,951.52
Dallas	Great National Life Building		3/10/11	1/21/14	22,151,339.87
Dallas	1600 Pacific (formerly LTV Tower/National Bank of Commerce)		7/24/13		
Dallas	Statler Hilton		6/10/14		
El Paso	Martin Building		12/19/13		
Ellis	McGuire Law Office	4/25/14			
Ellis	Rowe Building	6/18/14			
Galveston	Medical Arts Building	6/6/14			
Galveston	Jean Lafitte Hotel		2/9/11	5/16/14	9,798,096.00
Galveston	Hendley Row Building		6/11/14		
Harris	Oriental Textile Mill (Heights Clock Tower Building)	3/17/14	6/11/14		
Harris	Wilson Stationery and Printing Building		12/14/12		
Harris	Texas Company		1/16/13		
Lubbock	Myrick Building	2/7/14			
McLennan	The Waco Hippodrome Theatre		4/4/13		
Midland	Midland Tower	6/3/14			
Potter	Nelson Drug Company Building	10/30/12			
Potter	10th Avenue Gas Station Building	9/10/13			
Potter	Panhandle Radio Building	10/30/12			
Potter	Davidson Oil Warehouse Building Redevelopment	4/25/14			
Potter	Vineyard Manor		9/23/11	4/24/14	1,639,919.00
Smith	Peoples National Bank		3/8/13		
Tarrant	Fort Worth Recreation Building	11/1/13			
Tarrant	Hunter Plaza	11/27/13	6/11/14		

Note: Dates in bold reflect the THC review dates during the 2013–2014 biennium.

Continues next page





INVESTMENT TAX CREDIT PROJECTS REVIEWED BY THE THC DURING FY 2013–2014 (CONT.)

COUNTY	PROJECT	PART 1	PART 2	PART 3	REHAB COSTS
Tarrant	Hotel Texas Annex	3/4/14			
Tarrant	Parker-Browne Company Building	4/25/14			
Tarrant	Fort Worth Warehouse & Transfer Company Building		8/29/11	9/25/13	\$ 3,500,000.00
Travis	George W. Sampson House		5/21/12	12/9/13	1,917,018.96
Washington	Kugel Building	12/14/12			
Williamson	Dimmitt Building		2/25/13		
TOTAL					\$97,205,469.92

Note: Dates in bold reflect the THC review dates during the 2013–2014 biennium.

Certified Local Government Grants

The Certified Local Government (CLG) program functions as a financial and educational resource for participating communities around the state. By undergoing preservation training and working toward preserving local historic resources, a city or county may become eligible to receive CLG grant monies each year for projects such as National Register nominations, education workshops, and historic resources surveys.

CERTIFIED LOCAL GOVERNMENT GRANT RECIPIENTS FY 2013

CLG COMMUNITY	PROJECT	AMOUNT
Comal County	Historic Resources Survey Phase IV	\$13,250
Denison	Downtown Historic District Survey	3,500
Galveston	Development of Design Standards and Companion Pieces	5,000
Georgetown	Signage, Survey & Inventory of Citizens Memorial Cemetery	7,000
Killeen	National Register Nomination for City Hall/Avenue D School	2,752
Marshall	Buard History Trail	13,412
Matagorda County	Rehabilitation on Bay City USO Building	47,467
Palestine	Historic Downtown Resources Survey	3,000
Paris	Replacement of City Hall Windows	24,000
Tarrant County	Interview Techniques for Oral Histories Workshop	750
Travis County	Historic Resources Survey	7,500
Tyler County	Historic Resources Survey of Downtown	5,8580
TOTAL		\$133,489





CERTIFIED LOCAL GOVERNMENT GRANT RECIPIENTS FY 2014

CLG COMMUNITY	PROJECT	AMOUNT
Austin	Historic Resources Survey of Covert Park and Restoration of Monument	\$25,000
Denison	Historic Instruction Preservation Class	3,000
Denton	Historic Resources Survey, Phase II	37,755
Denton County	Historic Resources Survey	30,000
Galveston	Survey and Inventory of East End, Silk Stocking & Lost Bayou Districts	10,000
Georgetown	National Register Nomination	12,000
Paris	Restoration of J.J. Culbertson Fountain	15,000
Travis County	Survey and Inventory of Southwest Travis County	8,500
Tyler	Preservation Education Workshop	4,000
Waco	Elm Avenue Preservation Plan Development	10,000
TOTAL		\$155,255





APPENDIX **E**

FINANCIAL REPORT

Combined Statement of Revenues, Expenditures, and Changes in Fund Balances/Statement of Activities;
Governmental Funds for the Fiscal Year Ended August 31, 2013.

	GENERAL FUNDS	SPECIAL REVENUE FUNDS	CAPITAL PROJECTS FUNDS	PERMANENT FUNDS	TOTAL
REVENUES					
Legislative Appropriations					
Original Appropriations (GR)	3,938,447.00				\$3,938,447.00
Additional Appropriations (GR)	1,500,468.65				1,500,468.65
Taxes (GR)	(51.58)				(51.58)
Federal Revenue (PR – Operating or Capital)	1,326,825.18				1,326,825.18
Federal Grant Pass-Through Revenue (GR)	1,720,433.30				1,720,433.30
License, Fees & Permits (PR)	1,634,881.33				1,634,881.33
Interest and Other Investment Income (GR)	58,867.94	242,475.17		1,206.83	302,549.94
Net Increase (Decrease) in Fair Value (GR)	449,988.15				449,988.15
Land Income	22,192.63				22,192.63
Settlement of Claims (GR)	1,500.00				1,500.00
Sales of Goods and Services (PR)	195,234.11				195,234.11
Other (GR)	423,217.50				423,217.50
TOTAL REVENUES	11,272,004.21	242,475.17		1,206.83	\$11,515,686.21
EXPENDITURES					
Salaries and Wages	8,017,764.31				\$8,017,764.31
Payroll Related Costs	2,225,977.22				2,225,977.22
Professional Fees and Services	949,223.02	128,007.71	105,269.65		1,182,500.38
Travel	193,911.68	20,325.57			214,237.25
Materials and Supplies	1,338,862.68	2,717.64			1,341,580.32
Communication and Utilities	533,984.62				533,984.62
Repairs and Maintenance	404,161.28		226,767.88		630,929.16
Rentals and Leases	290,160.90				290,160.90
Printing and Reproduction	138,047.63	16,537.20			154,584.83
Intergovernmental Payments	370,458.02		8,282,608.46		8,653,066.48
Public Assistance Payments	944,214.47				944,214.47
Other Expenditures	3,074,360.12	42,968.36	32,611.69		3,149,940.17
Capital Outlay	142,942.70		715,302.57		858,245.27
TOTAL EXPENDITURES/EXPENSES	18,624,068.65	210,556.48	9,362,560.25		\$28,197,185.38
Excess of Revenues over Expenditures	(7,352,064.44)	31,918.69	(9,362,560.25)	1,206.83	(16,681,499.17)
OTHER FINANCING					
Sale of Capital Assets	11,430.00				11,430.00
Transfers In	4,908,283.00		6,141,465.39		11,049,748.39
Transfers Out	(1,387,623.93)		(1,702,739.94)		(3,090,363.87)
Appropriations Lapsed	(1,782.42)				(1,782.42)
TOTAL OTHER FINANCING	3,530,306.65		4,438,725.45		\$7,969,032.10
Net Change in Fund	(3,821,757.79)	31,918.69	(4,923,834.80)	1,206.83	(8,712,467.07)
FUND BALANCES					
Fund Balances – Beginning	13,358,933.17	1,049,319.37	28,905,165.29	292,862.22	43,606,280.05
Restatements		(2,897.41)			(2,897.41)
Fund Balances – As Restated, Sept. 1, 2012	13,358,933.17	1,046,421.96	28,905,165.29	292,862.22	43,603,382.64
FUND BALANCES, AUG. 31, 2013	9,537,175.38	1,078,340.65	23,981,330.49	294,069.05	\$34,890,915.57





TEXAS HISTORICAL COMMISSION
real places telling real stories

P.O. BOX 12276 • AUSTIN, TX 78711-2276
PHONE 512.463.6100 • FAX 512.463.8222
www.thc.state.tx.us