

ALERT

TEXAS CITRUS IS AT RISK

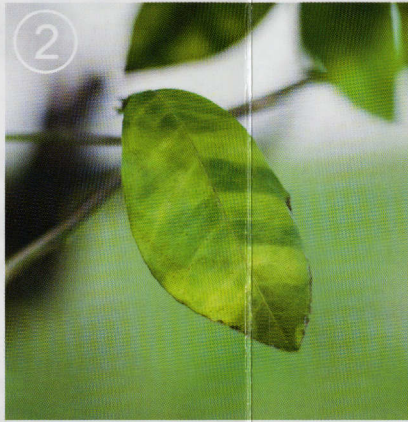
Citrus Greening Disease is
SPREADING

And you can help



What is citrus greening?

Citrus greening, also known as Huanglongbing (HLB), is the most destructive disease of citrus. Although it is a serious threat to Texas citrus such as orange, grapefruit, lemon, lime, kumquat, tangerine and orange jasmine, the disease poses no threat to humans or animals. It is spread by a small insect called the Asian Citrus Psyllid (ACP). **Once a tree is infected, there is NO CURE.**



How does it spread?

Citrus greening is mainly transmitted by the Asian citrus psyllid which spreads the disease from infected to uninfected trees. Movement of infected plants or use of infected budwood also spreads the disease.

How does it affect us all?

The Texas citrus fruit industry and homeowners are in danger of losing trees, tree productivity, and fruit quality. Additionally, the Texas nursery industry faces increased costs and regulatory restrictions on the sale of citrus nursery plants. Profitability of other businesses that depend on the citrus industry also are negatively impacted.

Signs and Symptoms

1. Visible Asian Citrus Psyllids (ACP)
2. Asymmetrical blotchy mottling of leaves
3. Raised/thickened/corky veins
4. Lopsided, bitter, hard fruit with small, dark aborted seeds



Photo Credit: Olufemi J. Alabi

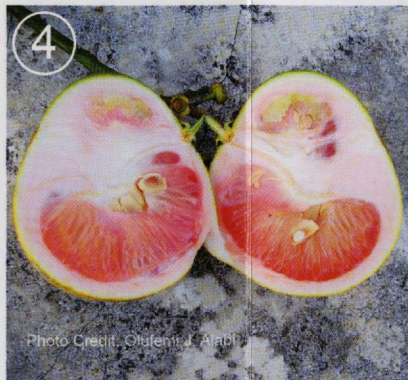
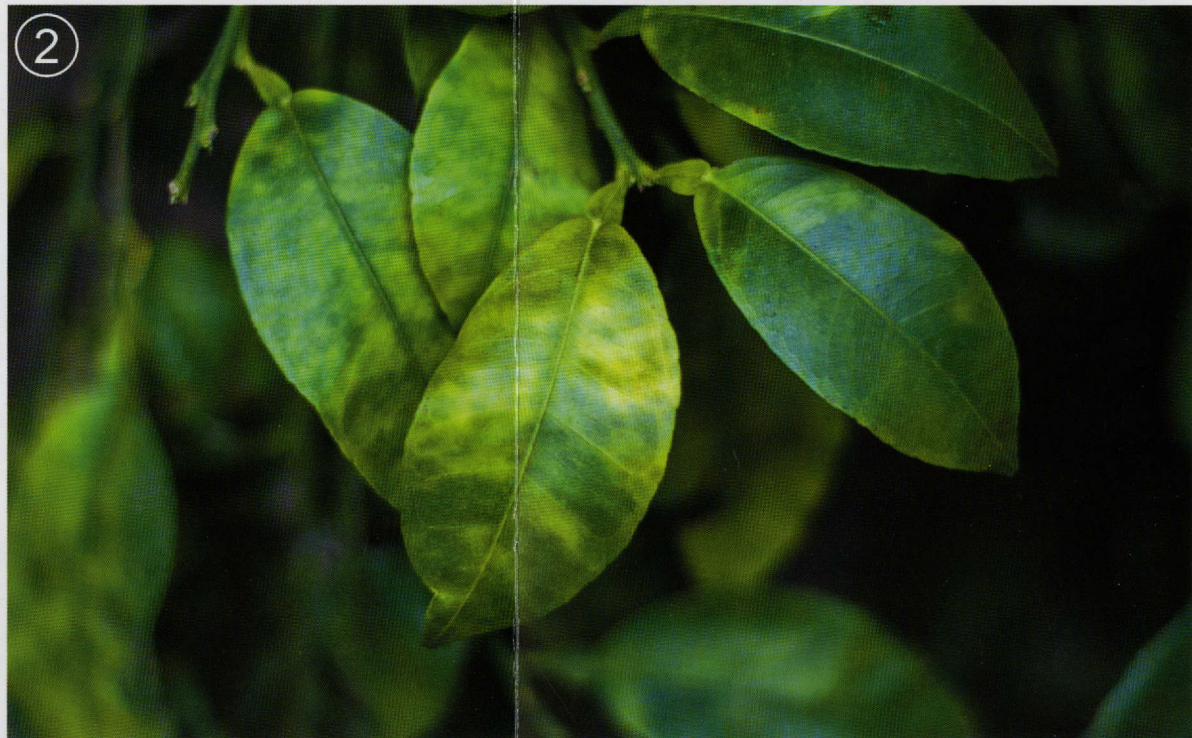


Photo Credit: Olufemi J. Alabi



What if my citrus nursery plants have citrus greening?

If TDA confirms citrus greening in citrus nursery plants, the plants must be destroyed under TDA supervision. Infected citrus plants are a threat to uninfected plants.

How can I avoid citrus greening infecting my plants?

1. Keep citrus plants free of Asian citrus psyllid, the insect that spreads the disease. A list of treatment options is at www.citrusalert.com
2. Inspect citrus plants frequently for Asian citrus psyllid and symptoms of citrus greening.
3. Citrus plants sold inside the Citrus Zone*, must have been produced by a TDA-certified citrus nursery.

Do not move citrus plants out of a quarantined area!

* The Citrus Zone currently include the following Texas counties: Brooks, Cameron, Hidalgo, Jim Hogg, Kenedy, Starr, Willacy, and Zapata.



TEXAS A&M
AGRI LIFE
EXTENSION

SOUTH TEXAS
CITRUS ALERT

CITRUS NURSERIES YOU CAN HELP

1 DO NOT MOVE CITRUS PLANTS AND ORANGE JASMINE

Do not move citrus plants or orange jasmine out of a citrus greening quarantined area. Contact the Texas Department of Agriculture (TDA) about requirements for shipping into a quarantined area. Use the following TDA map to learn if you are inside a quarantined area: <http://tinyurl.com/pmmp34p>

2 INSPECT YOUR PLANTS OFTEN

Look for Asian citrus psyllids and for symptoms of citrus greening. Photos of citrus greening at www.citrusalert.com may help you identify an infected plant. TDA prohibits the sale of plants with pests or disease symptoms. All citrus plants sold or distributed in a citrus greening quarantined area must have a tag with the following wording "Prohibited for Movement Outside of Quarantine Area. Penalty for Violation. Texas Department of Agriculture"

3 REPORT PLANTS THAT APPEAR TO BE INFECTED

There is no cure for citrus greening disease. Over time, an infected plant's fruit production will decline, the fruit will become bitter and misshapen, and the plant will die. If you suspect citrus greening in your plants, contact us here:

NURSERIES

1-800-TELL TDA (1-800-835-5832) or
PlantQuality@TexasAgriculture.gov

HOMEOWNERS

Report symptomatic trees, using
www.saveourcitrus.org

ALERT

TEXAS CITRUS IS AT RISK

Citrus Greening Disease is SPREADING

And you can help

